

Woodwright™ Ceiling Panels



HunterDouglasContract

CEILINGS



Go with the grain.

Front Cover: KFC Yum! Center
Louisville, KY United States
Architect/Specifier: Populous
Products: Curved Torsion Spring
Photographer: Bob Perzel

Inside Cover: Chanhassen High School
Chanhassen, MN United States
Architect/Specifier: Perkins + Will Architects
Products: Linear-Box 4
Photographer: Bob Perzel



Wood has inspired art and architecture for thousands of years. One of the most versatile materials available, wood creates a natural and unique atmosphere in both interior and exterior applications.

Woodwright™ Ceiling Panels, by Hunter Douglas, include Natura™ real wood and Luxalon® metal ceiling panels in real wood veneer or simulated wood finishes. Both are available in various shapes and sizes and in a wide selection of wood finishes.

Key Features

- Large format panels, linear profiles, beams and wall panels
- Various acoustical performance levels
- Woodwright ceiling and wall panels are Class A fire rated
- FSC certified solid wood, real wood veneer, and simulated wood finishes available
- Easy access to plenum
- Accommodates industry-standard service devices (lighting, diffusers, etc.)
- Trim systems available

PLANK & TILE	4
LINEAR	6
BEAMS	8
SUSTAINABILITY	10

Plank & Tile Ceilings

Woodwright™ Plank & Tile Ceiling systems provide a clean, subtle look that communicates a sense of permanence and durability, out-performing traditional ceiling panels. Choose from Natura™ Wood Products, Gladius™ Ceiling Panels, Hook-On, Lay-In or Torsion-Spring metal ceilings in a wide variety of sizes, finishes and perforation options.

PLANK & TILE





Opposite: Lumiere Place Casino
St. Louis, MO United States
Architect/Specifier: Marnell Architecture
Product: Torsion Spring
Photographer: Mark Bealer

Above: McCamish Pavilion at Georgia Tech
Atlanta, GA United States
Architect: Populous
Product: Woodwright™ Torsion Spring
Photographer: Bob Perzel

Linear Ceilings

Woodwright™ Linear Ceilings offer the look and feel of wood in a variety of products that minimize limitations. Linear ceiling systems highlight versatility, allowing a variety of innovative interior and exterior visual effects. With panels ranging from 2" to 12" wide and 3' to 19' 8" long, you can deliver the look you want.

LINEAR





Opposite: Pudong Intl. Airport Term. 2
Shanghai, China
Architect/Specifier: East China Architectural
Design & Research Institute
Products: Box Series

Above: Suzhou Science & Cultural Arts Center
Suzhou, China
Architect/Specifier: Paul Andreu, ECADI
Products: Deep Box Series

Below: Zaragoza Church
Zaragoza, Spain
Architect: Ursula Heredia
Product: Linear



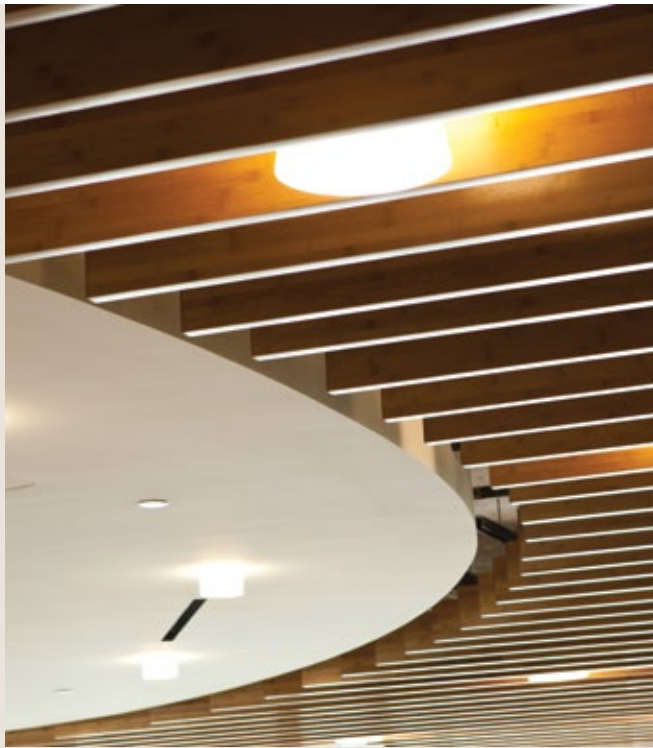
Beams

These versatile solid wood or metal products may be used for design freedom and flexibility. Beam width, height, and module size can be custom specified for scale, boldness, and geometry.

Woodwright™ Beam systems create a clean plenum mask and offer easy access to lighting, ventilation systems, and sprinklers. The spacious appearance is ideal for interior designs where more open ceiling plane constructions are desired.

BEAMS





*Opposite: A&P
Park Ridge, NJ United States
Architect/Specifier: Studio 5 Partnership,
Architects/Planners LLC
Product: Cell Frame/Baffle
Photographer: Mark Bealer*

*Left & Below: Corporate Office
Atlanta, GA United States
Architect: HOK
Product: High Profile Series
Photographer: Lance Davies*





Hunter Douglas has long designed and manufactured its ceiling systems to follow the principles of sustainability and indoor environmental quality. We have the experience, the knowledge and the products.

KEY ENVIRONMENTAL PROGRAMS AND FEATURES

- Our U.S. manufacturing location, which produces all our metal ceiling systems for the North American market, qualifies as a zero landfill facility
- Hunter Douglas Contract is a longtime member of the U.S. Green Building Council
- Hunter Douglas has an ongoing commitment to research that improves the sustainability of our sourcing and manufacturing process

LEED EXPERTISE

Our project managers and engineers have worked on many LEED rated and/or sustainability designed projects, from manufacturing facilities to high-rise office towers. Contact us for product information and LEED documentation for projects with environmental design considerations.

Our project managers and engineers can assist architects/designers in a number of key areas to accumulate potential LEED® credits toward project certifications.

- MR Credit 2.1 and 2.2
Our aluminum ceiling panels are factory-cut to size, significantly reducing field cutting and scrap
- MR Credit 4.1 and 4.2
Our aluminum ceilings contain up to 95% recycled content, approximately 40% is post-consumer
- MR Credit 7.0
Hunter Douglas provides FSC certified solid wood panels and FSC certified wood veneer. Our chain of custody certificate number is SCS-COC-003509
- EQ Credit 3.1 and 3.2
Our metal ceiling panels have no reportable VOC's
- EA Credit 1
Our metal ceiling panels may have a light reflectance of LR1 which may contribute to energy savings



Opposite: Tari Jewelry Centre
Caserta, Italy
Architect/Specifier: Paolo Valeriani
Product: Linear



Above: Leon Airport
Leon, Spain
Architect: Francisco Benitez
Product: Linear

Above: Sears Centre
Hoffman Estates, IL United States
Architect/Specifier: Ryan Companies
Product: 300C - Linear Plank

Above: Plaza el Bosque Park & Suites
Santiago, Chile
Architect/Specifier: Fernández-Wood Arquitectos
Product: Exterior Panel

As architects and designers expand the boundaries of design, Hunter Douglas continues to work alongside them. Our ceiling systems are found in some of the world's most recognizable projects.

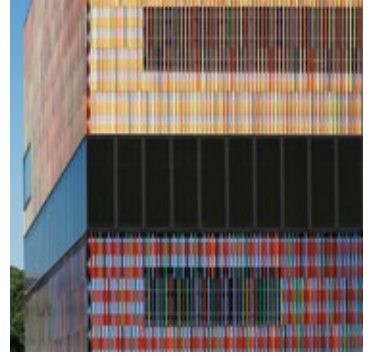
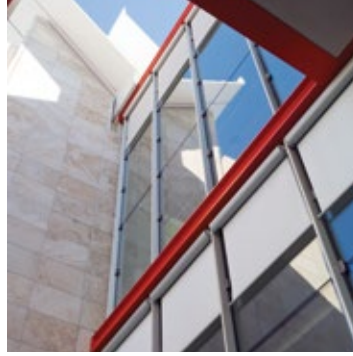
Learn More

Call 800-366-4327

www.hunterdouglascontract.com/ceilings


HunterDouglasContract

WINDOW COVERINGS	CEILINGS	SOLAR CONTROL	FAÇADES
------------------	----------	---------------	---------



Hunter Douglas Contract
5015 Oakbrook Parkway, Suite 100
Norcross, GA 30093
Phone: 800.366.4327
Fax: 770.806.0214
www.hunterdouglascontract.com/ceilings

© 2013 Hunter Douglas. All rights reserved. All trademarks used herein are the property of their respective owners.

 This brochure was printed using recycled paper.