



HunterDouglasContract

WINDOW COVERINGS



**Innovative products
make innovative projects.**

Above: 111 S. Wacker, Chicago, Illinois
Architect: Goettsch Partners
Product: CL62 Horizontal Aluminum Blinds



Innovation isn't about being content with what's available. It's about envisioning what comes next. Since our creation of the aluminum blind, Hunter Douglas window coverings have defined the industry with their breakthrough style and functionality. Our focus on customization allows you to explore new directions of design. As the world leader in window coverings, Hunter Douglas has introduced many of the most innovative and successful products in the market today, including roller shades with GreenScreen® PVC-free fabrics and our exclusive Silhouette® FR shadings. We're constantly finding new ways to manage light, provide privacy, and create unique looks for the window. We don't just manufacture window coverings. We invent them.

HORIZONTAL ALUMINUM BLINDS	2
ROLLER SHADES FR AND GREENSCREEN® FABRICS	8
SILHOUETTE® FR WINDOW SHADINGS	12
DUETTE® FR HONEYCOMB SHADES	14
WOOD BLINDS	16
ALTERNATIVE WOOD BLINDS	18
VIGNETTE® FR WINDOW SHADINGS	20
PALM BEACH® SHUTTERS	22
VERTICAL BLINDS	24
WOVEN WOOD FR SHADES	26
PLEATED SHADES AND ADDITIONAL PRODUCTS	27

Horizontal Aluminum Blinds

Hunter Douglas created the industry's first horizontal aluminum blinds, and we keep finding ways to make them better. Our spring-tempered aluminum slats offer best-in-class resilience to withstand the toughest treatment. We offer an innovative range of finishes and dozens of colors, including our Thermostop®, perforated, and mirror finishes.



Unmatched Excellence.

Model CD – 1" blinds

OPERATING MECHANISM	<ul style="list-style-type: none"> Headrail 1 3/8" x 1 3/8" ■ Braided ladders: 100% polyester yarn color compatible with slats ■ Break-Thru safety tassel ■ Box brackets ■ Slip clutch tilter ■ Widths 10 1/2" – 144"* ■ Heights to 144"*** Crash proof cord lock ■ Designer headrail (no valance needed) ■ Sealed bottom rail
CD60	<ul style="list-style-type: none"> 1" x .006" slat ■ Tape spacing 20mm = tight spacing for superior light control
CD62	<ul style="list-style-type: none"> 1" x .006" slat ■ Tape spacing 22mm = industry standard for light control
CD80	<ul style="list-style-type: none"> 1" x .008" slat ■ Tape spacing 20mm = tight spacing for superior light control
CD82	<ul style="list-style-type: none"> 1" x .008" slat ■ Tape spacing 22mm = industry standard for light control
CD88	<ul style="list-style-type: none"> 1" x .008" slat ■ Tape spacing 18mm = very tight spacing for the highest degree of light control ■ Standard de-Light™ feature
MATERIAL	<ul style="list-style-type: none"> Durable aluminum alloy slats, heat-treated and spring tempered ■ Dust Shield™ coating ■ Metallic finish with clear coat
OPTIONS	<ul style="list-style-type: none"> Color striping ■ Hidden brackets Limited tilt to control closure Motorization ■ Perforated slat (.008" only)

Model CL – 1" blinds

OPERATING MECHANISM	<ul style="list-style-type: none"> Headrail 1" x 1" ■ Braided ladders: 100% polyester yarn color compatible with slats ■ Break-Thru safety tassel ■ Box brackets ■ Slip clutch tilter ■ Widths 10 1/2" – 144" (CHM82 to 120")* ■ Heights to 144" (CHM82 to 108")** ■ Crash-proof cord lock Sealed bottom rail
CL62	<ul style="list-style-type: none"> 1" x .006" slat ■ Tape spacing 22mm = industry standard for light control
CL82	<ul style="list-style-type: none"> 1" x .008" slat ■ Tape spacing 22mm = industry standard for light control
CHM82	<ul style="list-style-type: none"> 5/8" x .008" slat ■ Tape spacing 12mm = good light control
CX80	<ul style="list-style-type: none"> 1" x .008" slat ■ Tape spacing 20mm = tight spacing for superior light control
MATERIAL	<ul style="list-style-type: none"> Durable aluminum alloy slats, heat-treated and spring tempered ■ Dust Shield™ coating ■ Metallic finish with clear coat
OPTIONS	<ul style="list-style-type: none"> Color striping ■ Custom brackets with pivot plates ■ Limited tilt to control closure Motorization ■ Perforated slat (.008" only) Pocket bracket ■ Two position cord lock with ring pull (right hand only)

KEY FEATURES

- **BOUNCEBACK SLATS** Heat-treated and spring-tempered for best-in-class durability
- **ENVIRONMENTAL RESPONSIBILITY** Our blinds include substantial recycled content (from 70–95%)
- **DUST SHIELD™** Proprietary anti-static, dust-repellent paint to minimize maintenance
- **SLIP-CLUTCH TILTER** Prevents over-rotation to stop damage and prolong life of blind
- **CLOSED OVAL BOTTOM RAIL** Optimally shaped steel will not bow, inhibits dust build-up
- **UNMATCHED CUSTOMIZATION** Design options for any application



Proven Quality.

Model CE – 1" blinds	
OPERATING MECHANISM	<ul style="list-style-type: none"> ▪ Headrail 1" x 1 1/2" ▪ Braided ladders: 100% polyester yarn color compatible with slats ▪ Break-Thru safety tassel ▪ Box brackets ▪ Slip clutch tilter ▪ Widths 10 1/2" – 144"* ▪ Height to 144"*** ▪ Crash-proof cord lock ▪ Sealed bottom rail
CE60	<ul style="list-style-type: none"> ▪ 1" x .006" slat ▪ Tape spacing 20mm = tight spacing for superior light control
CE61	<ul style="list-style-type: none"> ▪ 1" x .006" slat ▪ Tape spacing 22mm = industry standard for light control
CE80	<ul style="list-style-type: none"> ▪ 1" x .008" slat ▪ Tape spacing 20mm = tight spacing for superior light control
CE81	<ul style="list-style-type: none"> ▪ 1" x .008" slat ▪ Tape spacing 22mm = industry standard for light control
MATERIAL	<ul style="list-style-type: none"> ▪ Durable aluminum alloy slats, heat-treated and spring-tempered ▪ Dust Shield™ coating ▪ Metallic finish with clear coat
OPTIONS	<ul style="list-style-type: none"> ▪ Color striping ▪ Custom valance ▪ Limited tilt to control closure ▪ Motorization ▪ Perforated slat (.008" only) ▪ Pivot Plates ▪ Two position cord lock with ring pull (right hand only)

Model H2 – 2" blinds	
OPERATING MECHANISM	<ul style="list-style-type: none"> ▪ Slat 0.008" ▪ Tape spacing 42 mm ▪ Headrail 1 1/2" x 2 1/4" ▪ Ladder tapes in vinyl, polyester or cloth ▪ Break-Thru safety tassel ▪ Box brackets ▪ Slip clutch tilter ▪ Widths 10 1/2" – 144"* ▪ Height to 144"*** ▪ Crash-proof cord lock ▪ Sealed bottom rail
H200	<ul style="list-style-type: none"> ▪ 2" x .008" slat ▪ Tape spacing 42 mm = tight spacing for superior light control
H2TN	<ul style="list-style-type: none"> ▪ 2" x .008" slat ▪ Traditional styling ▪ Vinyl tape ▪ Cord tilter ▪ 2.2 mm polyester cord
H282	<ul style="list-style-type: none"> ▪ 2" x .008" slat ▪ Tape spacing 42 mm = tight spacing for superior light control
MATERIAL	<ul style="list-style-type: none"> ▪ Durable aluminum alloy slats, heat-treated and spring tempered ▪ Dust Shield™ coating ▪ Metallic finish with clear coat
OPTIONS	<ul style="list-style-type: none"> ▪ Color striping ▪ Custom valance ▪ de-Light™ feature ▪ Interlocked slats ▪ Motorization

Visit www.hdcontract.com/windowcoverings for product specifications, colors, and information on energy efficiency.

* Minimum widths between 8 1/2" IB (8" OB) & 10 1/2" available. Surcharges and warranty exclusions apply.

** Heights in excess of 144" available. Surcharges and warranty exclusions apply.

Superior light control

CD Models | 1" Aluminum Blinds

Good design, excellent value, and resilient construction make CD blinds a superb choice for many architects, specifiers, and designers. The attractive design of the beveled steel headrail (1 3/8" x 1 3/8" x .024") eliminates the need for a separate valance system. Model CD88 features heavy-duty 1" x .008" slats, as well as our highest level of light control with tape spacing at just 18mm and de-Light™ feature to eliminate light leakage through routing holes.



- **CD60** 1" x .006" slat, 20mm spacing
- **CD62** 1" x .006" slat, 22mm spacing
- **CD80** 1" x .008" slat, 20mm spacing
- **CD82** 1" x .008" slat, 20mm spacing
- **CD88** 1" x .008" slat, 18mm spacing de-Light Feature



Specifications Visit www.hdcontract.com/windowcoverings for product specifications, colors, and information on energy efficiency.

PART 2 - PRODUCTS

2.01 ACCEPTABLE MANUFACTURER

A. Hunter Douglas Contract/ 12400 Stowe Drive/ Poway, CA 92064 / Phone: 800-727-8953 Fax: 800-205-9819 / Website: www.hunterdouglascontract.com/windowcoverings, or architect approved equivalent.

B. Product substitutions must be approved by architect minimum of 30 days prior to close of bid.

2.02 1" HORIZONTAL ALUMINUM BLINDS

A. PRODUCT: Hunter Douglas "Model CD 1" Aluminum Blind"

B. MATERIALS:

1. SLATS: 1" wide x .008" (models CD80, CD82, CD88) .006" (models CD60 & CD62) thick prior to painting, heat-treated and spring tempered (except 5000 series alloy on metallized finishes) aluminum alloy 6011 with eased corners and manufacturing burrs removed. Furnish not less than nominal 15.2 slats (models CD60 & CD80) 13.8 slats (models CD62 & CD82) 16.7 slats (model CD88 de-Light™ feature routed on back edge) per foot to ensure tight closure and light control. Finish with manufacturer's standard baked-on finish in colors selected by architect from manufacturer's available contract colors utilizing Dust Shield™ finish to inhibit dust build-up for easier maintenance.

2. SLAT SUPPORT: Braided ladders of 100% polyester yarn color compatible with slats and spacing of ladder no more than 20mm (models CD60 & CD80) 22mm (models CD62 & CD82) 18mm (model CD88)

3. HEADRAIL: U-shaped profile with rolled edges, measuring 1 3/8" x 1 3/8" x .024" constructed of corrosion resistant steel and providing a sleek beveled edge valance-free design. Internally fit with components required for specified performance and designed for smooth, quiet, trouble-free operation. Headrail finish to be standard baked-on polyester and to match slats. Ends fitted with .024" steel end lock with adjustable tab for centering blinds.

4. BOTTOM RAIL: Steel, with corrosion-resistant finish formed with double-lock seam into closed oval shape for optimum beam and torsional strength. Ends fitted with color-coordinated engineered polymer caps. Color-coordinated engineered polymer tape buttons secure the ladder and cord. Bottom Rail finish to be standard baked-on polyester color-coordinated to slats.

5. LIFTING MECHANISM: Crashproof steel cordlocks with corrosion-resistant finish, two-ply polyester cord filler in braided polyester jacket lift cords, cord equalizers, cordlock adapter, and Break-Thru® safety tassel. Located on either side of individual blind unit as per architect's request.

6. TILTING MECHANISM: Permanently lubricated die-cast worm and gear type tilter gear mechanism in fully enclosed housing with clutch action to protect ladder tapes from over rotation of the solid steel, corrosion resistant tilt rod.

7. TILT CONTROL WAND: Tubular shaped 7/16" diameter extruded clear plastic, ribbed for positive grip and detachable without tools. Located on either side of individual blind unit as per architect's request.

8. MOUNTING HARDWARE: Manufacturer's standard .042" steel box brackets with baked-on polyester finish to match headrail with additional support brackets for blinds over 60" wide.

9. ADDITIONAL AVAILABLE OPTIONS: Limited Tilt, Ring Pulls, Color Striping, 2 or 3 Blinds on 1 Headrail, Hidden Brackets, Side Channels (limited colors available), Hold Down Brackets, Cutouts, Perforated Slat (.008" slat only).

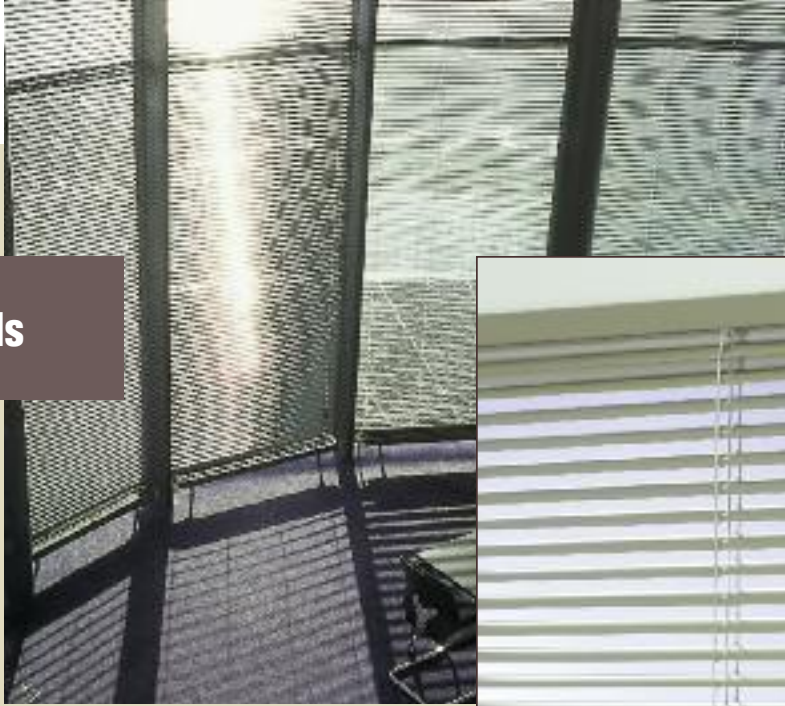
2.03 FABRICATION

A. Blind measurements shall be accurate to within $\pm 1/8"$ or as recommended in writing by manufacturer.

The industry standard

CL Models | 1" Aluminum Blinds

A proven performer for contract and commercial applications, the CL mini aluminum blind is often specified as the industry standard. The sturdy 1" x 1" x .024" steel headrail accommodates narrow mounting depths. Model CL82 provides good light control with 22mm tape spacing and heavy-duty 1" x .008" slats. With its 5/8" slats, the CHM82 micro aluminum blind offers a distinctly different look.



- **CL62** 1" x .006" slat, 22mm spacing
- **CL82** 1" x .008" slat, 22mm spacing
- **CHM82** 5/8" x .008" slat, 12mm spacing
- **CX80** 1" x .008" slat, 20mm spacing

Specifications

Visit www.hdcontract.com/windowcoverings for product specifications, colors, and information on energy efficiency.

PART 2 - PRODUCTS

2.01 ACCEPTABLE MANUFACTURER

A. Hunter Douglas Contract/ 12400 Stowe Drive/ Poway, CA 92064 / Phone: 800-727-8953 Fax: 800-205-9819 / Website: www.hunterdouglascontract.com/windowcoverings, or architect approved equivalent.

B. Product substitutions must be approved by architect minimum of 30 days prior to close of bid.

2.02 1" HORIZONTAL ALUMINUM BLINDS

A. PRODUCT: Hunter Douglas
"Model CL 1" Aluminum Blind"

B. MATERIALS:

1. SLATS: 1" wide x .006" (model CL62) .008" (models CL82, CX80, & CHM82 with 5/8" slat width) thick prior to painting, heat-treated and spring tempered (except 5000 series alloy on metallized finishes) aluminum alloy 6011 with eased corners and manufacturing burrs removed. Furnish not less than nominal 13.8 slats (models CL62 & CL82) 15.2 slats (model CX80) 25 slats (model CHM82) per foot to ensure tight closure and light control. Finish with manufacturer's standard baked-on finish in colors selected by architect from manufacturer's available contract colors utilizing Dust Shield™ finish to inhibit dust build-up for easier maintenance.

2. SLAT SUPPORT: Braided ladders of 100% polyester yarn color compatible with slats and spacing of ladder no more than 20mm (model CX80) 22mm (models CL62 & CL82) 12mm (model CHM82).

3. HEADRAIL: U-shaped profile with rolled edges, measuring 1" x 1" x .024" constructed of corrosion resistant steel. Internally fit with components required for specified performance and designed for smooth, quiet, trouble-free operation. Headrail finish to be standard baked-on polyester and to match slats. Ends fitted with .024" steel end lock with adjustable tab for centering blinds.

4. BOTTOM RAIL: Steel, with corrosion-resistant finish formed with double-lock seam into closed oval shape for optimum beam and torsional strength. Ends fitted with color-coordinated engineered polymer caps. Color-coordinated engineered polymer tape buttons secure the ladder and cord. Bottom Rail finish to be standard baked-on polyester color coordinated to slats.

5. LIFTING MECHANISM: Crashproof cordlock in engineering polymer housing with nickel-plate die-cast bearing surface and brass locking clips, two-ply polyester cord filler in braided polyester jacket lift cords, cord equalizers, cordlock adapter, and Break-Thru® safety tassel. Located on either side of individual blind unit as per architect's request.

6. TILTING MECHANISM: Permanently lubricated die-cast worm and gear type tilter gear mechanism in fully enclosed housing with clutch action to protect ladder tapes from over rotation of the solid steel, corrosion resistant tilt rod.

7. TILT CONTROL WAND: Tubular construction 9/32" diameter extruded clear acrylic hexagonal, and detachable without tools. Located on either side of individual blind unit as per architect's request.

8. MOUNTING HARDWARE: Manufacturer's standard .040" steel box brackets with baked-on polyester finish to match headrail with additional support brackets for blinds over 60" wide.

9. ADDITIONAL AVAILABLE OPTIONS: Limited Tilt, Ring Pulls, Pivot Plates, Pocket Brackets, Two-Position Cord Lock, Color Striping, 2 or 3 Blinds on 1 Headrail, Valance, Side Channels (limited colors available), Hold Down Brackets, Cutouts, Perforated Slat (.008" slat only)

2.03 FABRICATION

A. Blind measurements shall be accurate to within ± 1/8" or as recommended in writing by manufacturer.

Heavy-duty durability

CE Models | 1" Aluminum Blinds

Ideal for larger installations, our CE aluminum mini blinds feature our sturdiest headrail for 1" blinds. The steel headrail measures 1" x 1-1/2", offering extra durability for openings up to 144" x 144". This blind's distinctive look and solid hardware ensure years of reliable service without sacrificing aesthetics. Model CE80 provides superior light control with tighter 20mm tape spacing and heavy-duty 1" x .008" slats.



- **CE60** 1" x .006" slat, 20mm spacing
- **CE61** 1" x .006" slat, 22mm spacing
- **CE80** 1" x .008" slat, 20mm spacing
- **CE81** 1" x .008" slat, 22mm spacing

Specifications Visit www.hdcontract.com/windowcoverings for product specifications, colors, and information on energy efficiency.

PART 2 - PRODUCTS

2.01 ACCEPTABLE MANUFACTURER

A. Hunter Douglas Contract/ 12400 Stowe Drive/ Poway, CA 92064 / Phone: 800-727-8953 Fax: 800-205-9819 / Website: www.hunterdouglascontract.com/windowcoverings, or architect approved equivalent.

B. Product substitutions must be approved by architect minimum of 30 days prior to close of bid.

2.02 1" HORIZONTAL ALUMINUM BLINDS

A. PRODUCT: Hunter Douglas "Model CE 1" Aluminum Blind"

B. MATERIALS:

1. SLATS: 1" wide x .008" (models CE80 & CE81) .006" (models CE60 & CE61) thick prior to painting, heat-treated and spring tempered (except 5000 series alloy on metallized finishes) aluminum alloy 6011 with eased corners and manufacturing burrs removed. Furnish not less than nominal 15.2 slats (CE60 & CE80) 13.8 slats (models CE61 & CE81) per foot to ensure tight closure and light control. Finish with manufacturer's standard baked-on finish in colors selected by architect from manufacturer's available contract colors utilizing Dust Shield™ finish to inhibit dust build-up for easier maintenance.

2. SLAT SUPPORT: Braided ladders of 100% polyester yarn color compatible with slats and spacing of ladder no more than 20mm (models CE60 & CE80) 22mm (models CE61 & CE81).

3. HEADRAIL: U-shaped profile with rolled edges, measuring 1" x 1 1/2" x .024" constructed of corrosion resistant steel. Internally fit with components required for specified performance and designed for smooth, quiet, trouble-free operation. Headrail finish to be standard baked-on polyester and to match slats. Ends fitted with .030" steel end lock with adjustable tab for centering blinds.

4. BOTTOM RAIL: Steel, with corrosion-resistant finish formed with double-lock seam into closed oval shape for optimum beam and torsional strength. Ends fitted with color-coordinated engineered polymer caps. Color-coordinated engineered polymer tape buttons secure the ladder and cord. Bottom Rail finish to be standard baked-on polyester color-coordinated to slats.

5. LIFTING MECHANISM: Crashproof steel cordlocks with corrosion-resistant finish, two-ply polyester cord filler in braided polyester jacket lift cords, cord equalizers, cordlock adapter, and Break-Thru® safety tassel. Located on either side of individual blind unit as per architect's request.

6. TILTING MECHANISM: Permanently lubricated die-cast worm and gear type tilter gear mechanism in fully enclosed housing with clutch action to protect ladder tapes from over rotation of the solid steel, corrosion resistant tilt rod.

7. TILT CONTROL WAND: Tubular shaped 7/16" diameter extruded clear plastic, ribbed for positive grip and detachable without tools. Located on either side of individual blind unit as per architect's request.

8. MOUNTING HARDWARE: Manufacturer's standard .042" steel box brackets with baked-on polyester finish to match headrail with additional support brackets for blinds over 60" wide.

9. ADDITIONAL AVAILABLE OPTIONS: Limited Tilt, Ring Pulls, Pivot Plates, Two-Position Cord Locks, Color Striping, 2 or 3 Blinds on 1 Headrail, Valances, Side Channels (limited colors available), Hold Down Brackets, Cutouts, Perforated Slat (.008" slat only).

2.03 FABRICATION

A. Blind measurements shall be accurate to within ± 1/8" or as recommended in writing by manufacturer.

Best in class

H2 Models | 2" Aluminum Blinds

Offering maximum strength and sleek styling, our H2 blinds give the traditional look of 2" slats. The H2TN (School Blind) is optimized for the design and durability requirements of academic institutions, with sturdy vinyl tapes, 2.2mm cords, and cord tilt. Providing both maximum strength and sleek styling, the blind features heavy-duty slats of .008" aluminum and a low-profile steel headrail measuring 1-1/2" x 2-1/4" x .024".



- **H200** 2" x .008" slat, 42mm spacing
- **H2TN** 2" x .008" slat, 42mm spacing
- **H282** 2" x .008" slat, 42mm spacing, de-Light™ Feature

Specifications

Visit www.hdcontract.com/windowcoverings for product specifications, colors, and information on energy efficiency.

PART 2 - PRODUCTS

2.01 ACCEPTABLE MANUFACTURER

A. Hunter Douglas Contract/ 12400 Stowe Drive/ Poway, CA 92064 / Phone: 800-727-8953 Fax: 800-205-9819 / Website: www.hunterdouglascontract.com/windowcoverings, or architect approved equivalent.

B. Product substitutions must be approved by architect minimum of 30 days prior to close of bid.

2.02 2" HORIZONTAL ALUMINUM BLINDS

A. PRODUCT: Hunter Douglas
"Model H2 2" Aluminum Blind"

B. MATERIALS:

- 1. SLATS:** 2" wide x .008" thick prior to painting, heat-treated and spring tempered (except 5000 series alloy on metallized finishes) aluminum alloy 6011 with eased corners and manufacturing burrs removed. Furnish not less than nominal 7.2 (model H282 de-Light™ feature routed on back edge) slats per foot to ensure tight closure and light control. Finish with manufacturer's standard baked-on finish in colors selected by architect from manufacturer's available contract colors utilizing Dust Shield™ finish to inhibit dust build-up for easier maintenance.
- 2. SLAT SUPPORT:** Braided ladders of 100% polyester yarn color compatible with slats and spacing of ladder no more than 42mm (all models). Model H2TN (School Blind) vinyl

tapes constructed of one-piece vinyl with 1 1/2" wide twin or single-ladders and uniform spacing of 16 ladders to 26" of tape (42mm). Tapes and ladders exceed commercial specification No. 1029-86 and provide a maximum 34" distance between tapes.

- 3. HEADRAIL:** U-shaped profile with rolled edges, measuring 1 1/2" x 2 1/4" x .024" constructed of corrosion resistant steel. Internally fit with components required for specified performance and designed for smooth, quiet, trouble-free operation. Headrail finish to be standard baked-on polyester and to match slats. Ends fitted with zinc coated steel end lock with adjustable tab for centering blinds.
- 4. BOTTOM RAIL:** .019" steel, with corrosion-resistant finish formed with double-lock seam into closed oval shape for optimum beam and torsional strength. Ends fitted with color-coordinated engineered polymer caps. Color-coordinated engineered polymer tape buttons secure the ladder and cord. Bottom Rail finish to be standard baked-on polyester color-coordinated to slats.
- 5. LIFTING MECHANISM:** Crashproof steel cordlocks with corrosion-resistant finish and steel locking dogs, polyester cord which meet or exceed commercial specifications No/ 1029-86 lift cords (model H2TN (School Blind) 2.2mm polyester lift cord & hexagon pulley) and Break-Thru®

safety tassel. Located on either side of individual blind unit as per architect's request.

- 6. TILTING MECHANISM:** Die-cast helical worm and gear type tilter gear mechanism in polymer housing with clutch action to protect ladder tapes from over rotation of the solid steel, corrosion resistant tilt rod. (Model H2TN (School Blind) cord tilter consisting of zinc die-cast gear type driven by a worm in enclosed polymer housing).
 - 7. TILT CONTROL CORD:** Tubular shaped 7/16" diameter extruded clear plastic, ribbed for positive grip and detachable without tools. (Model H2TN (School Blind) 2.2mm polyester cord tilter). Located on either side of individual blind unit as per architect's request.
 - 8. MOUNTING HARDWARE:** Manufacturer's standard .030" steel box brackets with baked-on polyester finish to match headrail with additional support brackets for blinds over 84" wide.
 - 9. ADDITIONAL AVAILABLE OPTIONS:** Wand Tilt (model H2TN), Ring Pulls, Valance, Hold Down Brackets, 2 or 3 Blinds on 1 Headrail, Cutouts.
- ##### 2.03 FABRICATION
- A.** Blind measurements shall be accurate to within ± 1/8" or as recommended in writing by manufacturer.

Roller Shades FR

Our roller shades provide an excellent solution for controlling light and glare. Simple, versatile, distinctive, and cost-effective, our line includes a wide range of decorative and performance fabrics, mounted on high-quality hardware.

Clean, Classic Styling.



Product Information

OPERATING MECHANISM	For rectangular windows only. Chain-drive clutch system with continuous loop beaded chain. Size limitations depend on the fabric.
MANUAL SYSTEM	<ul style="list-style-type: none"> ■ Adjustment-free system provided and controlled by a nickel-plated, brass ball chain ■ Heights 12" - 144"* ■ Optional manual system with fascia ■ Clutch system
MOTORIZED CONTROL	<ul style="list-style-type: none"> ■ Sturdy electrical and mechanical design is maintenance-free and permanently lubricated ■ Extremely quiet and reliable ■ Widths 30" – 144"* ■ Heights 12" – 144"* (over 120" with visible seam)
FABRICS	<ul style="list-style-type: none"> ■ GreenScreen® PVC-free fabrics ■ Fire retardant, passes NFPA 701 Small Scale Flammability testing ■ Winter R Value / double glazing 2.04 thru 2.17 ■ Summer Shading / double glazing 0.33 thru 0.56 ■ Fade, stain and curl resistant
LIGHT FILTERING (10%-25% openness factor)	<ul style="list-style-type: none"> ■ GreenScreen® Vista ■ GreenScreen® Spectra ■ Panorama 21 ■ Linen Weave ■ Granite ■ Sheerweave 3000 ■ E Screen 4110 ■ New Orleans ■ Sheerweave 2100 ■ Sheerweave 2360 ■ Sheerweave 4100
ROOM DARKENING (1%-9% openness factor)	<ul style="list-style-type: none"> ■ GreenScreen® Balance ■ GreenScreen® Eco ■ Basket 2120 ■ E Screen 4100 ■ M Screen 6005 ■ M Screen 6003 ■ Sheerweave 2000 ■ Sheerweave 2390 ■ Sheerweave 4000 ■ Star 2115 ■ Sheerweave 4400 ■ Sheerweave 4800 ■ Sheerweave 2410 ■ Sheerweave 5000 ■ Sheerweave 7000 (100% polyester with acrylic foam backing, PVC-free) ■ Sheerweave 7100 (PVC-coated fiberglass laminated with 2-ply 100% PVC blackout film)
BLACKOUT (0% openness factor)	<ul style="list-style-type: none"> ■ GreenScreen® Xlite ■ Flocke 11201 ■ Medina (100% fiberglass with vinyl laminates) ■ Morocco (0% openness factor) (100% fiberglass with vinyl laminates) ■ Pima (100% cotton with vinyl coating) ■ Regency Moire (100% fiberglass with vinyl laminates) ■ Windsor Linen (100% fiberglass with vinyl laminates)
OPTIONS	<ul style="list-style-type: none"> ■ Decorative hems ■ Color-coordinated trims ■ Fascia, top and bottom covers ■ Motorization ■ 4 clutch sizes ■ Sealed pocket hem bar ■ Dual shades ■ Banded shades ■ Extruded pockets ■ Reverse roll

* Larger sizes available. Surcharges and warranty exclusions apply.

GreenScreen® Fabrics

GreenScreen fabrics provide a superior choice for architects and designers seeking an alternative to traditional PVC-coated roller-shade fabrics. GreenScreen fabrics are a completely recyclable and environmentally friendly product that contains no VOC's and emits no off-gassing. GreenScreen is the only line of PVC-free contract fabric to offer this level of sustainability while maintaining FR characteristics.



Textured, High Performing PVC-Free Fabrics.

GREENSCREEN FEATURES

- PVC-free – no off-gassing or VOC's
- Flame resistant – meets or exceeds all North American and European flame tests
- Environmentally friendly – completely recyclable and environmentally safe to produce
- Thermal and solar performance – high performance fabric with outstanding shading coefficients
- Optional metallic backings – provide increased reflectivity and solar control
- LEED experience – specified on numerous LEED projects

Wind NRG Partners, LLC, United States
Architect: William Maclay Architects & Planners
Product: Internal Roller Shades with GreenScreen® PVC-free fabric

Roller Shades FR



Specifications Visit www.hdcontract.com/windowcoverings for product specifications, colors, and information on energy efficiency.

PART 2 – PRODUCTS

2.01 ACCEPTABLE MANUFACTURER

A. Hunter Douglas Contract/ 12400 Stowe Drive/ Poway, CA 92064 / Phone: 800-727-8953 Fax: 800-205-9819 / Website: www.hunterdouglascontract.com/windowcoverings, or architect approved equivalent.

B. Product substitutions must be approved by architect minimum of 30 days prior to close of bid.

2.02 MANUAL ROLLER SHADES

A. PRODUCT: Hunter Douglas “Manual Roller Shades FR”

B. MATERIALS:

1. FABRICS: Inherently anti-static, flame retardant, fade and stain resistant, light filtering, room darkening, and blackout fabrics providing 0% - 25% openness factors. Fabric weights to range between 6.00 oz/sq.yd. - 20.70 oz/sq.yd. containing fiberglass, PVC, polyester, acrylic, vinyl laminates, cotton, and vinyl coatings. Finish selected by architect from manufacturer’s available contract colors.

2. CONTROL SYSTEM: Adjustment-free continuous qualified #10 nickel-plated brass ball chain (50-lb. test) and pulley clutch operating system allows precise control and ensures a uniform look. Clutch will develop no more than 1/2 pound drag for ease of lifting. Glass reinforced polyester thermopolymer (PBT) plastic components conform to military specification MIL M-24519 and designed for smooth, trouble-free operation.

3. ROLLER: Circular-shaped painted extruded aluminum tubes with thicker wall & ribs provide additional strength while locking into place the clutch & end plug. 2" outside diameter extruded tube to have a .072" wall thickness (1 1/2" & 1 1/8" tubes have .055" wall thickness) providing strength & durability.

4. END PLUG: Heat stabilized fiber reinforced plastic outside sleeve and center shaft provide bearing surfaces on which the roller rides ensuring smooth, wear resistant operation.

5. BOTTOM ROD: Extruded aluminum fabric wrapped bottom bar (excluding thicker fabric) containing weight for tracking adjustments provides uniform look.

6. MOUNTING HARDWARE: Manufacturer’s standard .07" nickel-plated, C1008/1010 cold rolled steel universal brackets including end plug bracket with lock down retainer device.

7. ADDITIONAL AVAILABLE OPTIONS: Fascia, Top and Bottom Covers, Blockout Systems, Motorization, 3 Clutch Sizes, Sealed Pocket Hem Bar, Dual Shades, Banded Shades, Extruded Pockets, Reverse Roll, Plastic Bead Chain.

2.03 FABRICATION

A. Shade measurements shall be accurate to within + 1/8" or as recommended in writing by manufacturer.

Options

Fascia and Valances

Aluminum fascia (3" x 2 1/4" x .04") conceals shade mechanism from the front and sides. Widths from 12" to 144"; heights from 12" to 144". Available in anodized aluminum finish or painted white, vanilla, or bronze.

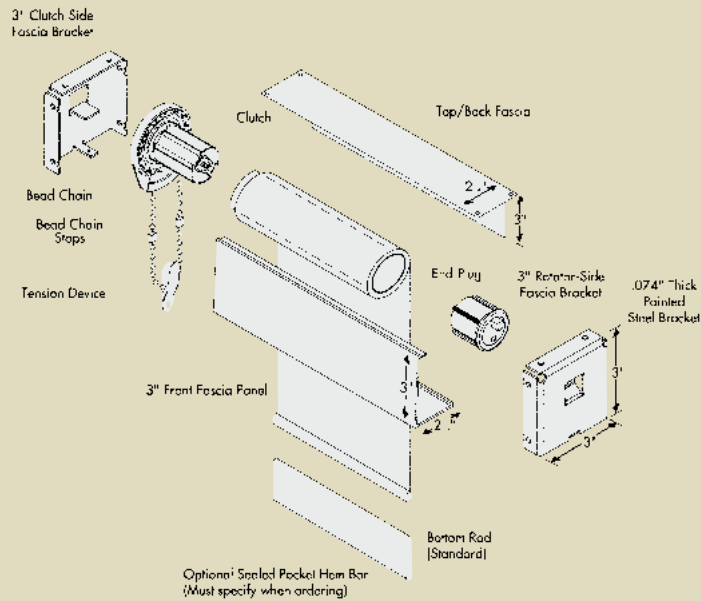
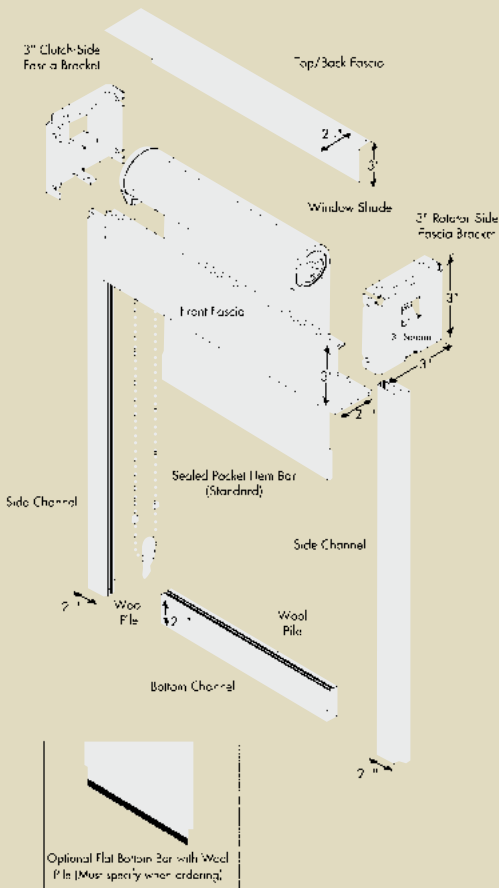


Motorization with Switch and Remote Control (no fascia)

Motorization package enables raising and lowering of shades by switch or remote control. Motors operate using a 24V DC power supply. Master switch available to control up to 12 shades.

Fascia with Top and Back Cover

Aluminum fascia (3" x 2 1/4" x .04") with top or back cover (3" x 2 1/4" x .04") to conceal shade mechanism from front, sides, and top/back. Widths from 12" to 144"; heights from 12" to 144". Available in anodized aluminum finish or painted white, vanilla, or bronze.



Blockout with Side Channels

Aluminum side and bottom channels (0.05"), fitted with light-blocking wool pile prevent leakage around edges and bottom of shade. Ideal for room-darkening and A/V applications. Available in anodized aluminum finish or painted white, vanilla, or bronze.

Oversized Shades

Special accommodations for oversized window applications are available. Please contact your regional sales manager for additional assistance.

Reverse Roll

Fabric mounted to descend from the interior (rather than window-facing) side, concealing the roll and creating a more finished appearance.

Plastic Beaded Operating Chain

Plastic beads attached to polyester-wrapped cotton cord (50-lb. test).

Silhouette® FR Window Shadings

Our exclusive Silhouette® FR window shadings offer category-defining functionality and aesthetics, as well as durability and ease of use. Adjustable soft fabric vanes are suspended between sheer facing fabrics. Silhouette shadings can be raised and lowered like standard shades and opened or closed like horizontal blinds – so they can filter and diffuse glare when lowered and can fully control light when lowered and closed. Available in a beautiful range of flame-resistant fabrics.



Filtered Light. Softened View.

Product Information

OPERATING MECHANISM	All models feature color-coordinated headrails, continuous cord loop control, cord tensioners, and bottom rail weights to maintain alignment
STANDARD	Fits window openings from 12" – 96" wide; from 12" – 96" high
NARROW	Fits window openings from 6" – 11 7/8" wide; from 12" – 96" high (tilt only option)
OVERSIZE	Fits window openings from 12" – 108" wide; from 12" – 120" high
FABRICS	<ul style="list-style-type: none"> ■ 3" vanes available in Originale (semi-opaque) and Bon Soir (room darkening) classic woven fabrics ■ Fabrics meet or exceed all requirements of NFPA 701 Small-Scale Flammability testing for commercial and hospitality applications ■ Knit sheer facing fabrics ■ Winter R value / double glazing = 2.40 ■ Summer shading coefficient / double glazing = 0.35 ■ UV protection closed 99% (open 65%)
OPTIONS	<ul style="list-style-type: none"> ■ Motorization and remote operation ■ Inside mount ■ Outside mount ■ End mount (max width = 48") ■ Dust covers ■ Optional cord drop [Color coordinated sizes: 2', 3', 4' and 5' for standard, narrow, and oversize rails. White available in lengths from 18"–12' (6" increments) and from 13'–16' (12" increments)].



Specifications Visit www.hdcontract.com/windowcoverings for product specifications, colors, and information on energy efficiency.

PART 2 – PRODUCTS

2.01 ACCEPTABLE MANUFACTURER

A. Hunter Douglas Contract/ 12400 Stowe Drive/ Poway, CA 92064 / Phone: 800-727-8953 Fax: 800-205-9819 / Website: www.hunterdouglascontract.com/windowcoverings, or architect approved equivalent.

B. Product substitutions must be approved by architect minimum of 30 days prior to close of bid.

2.02 COMMERCIAL WINDOW SHADINGS

A. PRODUCT: Hunter Douglas “Silhouette® FR Window Shadings”

B. MATERIALS:

1. FABRIC: Flame-retardant treated 100% sheer white knit polyester fabric located on front and rear suspended between 100% woven polyester 3" fabric facings treated to resist dust, dirt, static, and stains. Finish selected by architect from manufacturer's available contract colors.

2. HEAD/BOTTOM RAIL: Standard headrail type measuring 2 9/32" x 1" x .0625" thick constructed of aluminum alloy 6063 conceals shading when fully raised. Internally fit with components required for specified performance and designed for smooth, quiet, trouble-free operation. Bottom rail measuring 2" X 3/16" X .0625" thick constructed of aluminum alloy 6063. Finish to be standard polyester-based paint and to coordinate with fabric. Ends fitted with polycarbonate end caps measuring 2 13/16" X 2 9/32" color coordinated with fabric.

3. LIFTING / ROTATION MECHANISM: White polycarbonate spring tempered rotary clutch system raises, lowers and tilts shading when activating 1 1/2" tubular aluminum rotator rail. White polycarbonate limit assemblies control vane over-rotation. Color coordinated braided polyester 2.4mm diameter cord loop with tensioner to secure cord loop. Located on either side of individual shade unit as per architect's request.

4. MOUNTING HARDWARE: Manufacturer's standard white polycarbonate hidden brackets, provide a sleek, unobtrusive appearance.

5. ADDITIONAL AVAILABLE OPTIONS: Headrail Dust Cover, Back Cover, Oversized Rail, Motorization, Optional Cord Lengths, Hold Down Brackets.

2.03 FABRICATION

A. Blind measurements shall be accurate to within ± 1/8" or as recommended in writing by manufacturer.

Duette® FR Honeycomb Shades

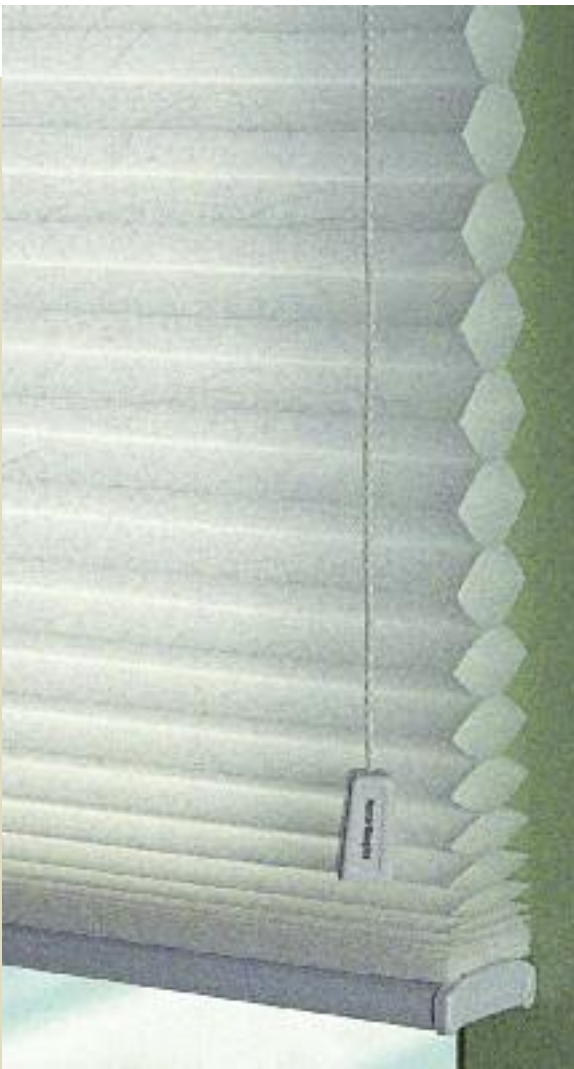
The superior functionality, soft fabric appearance, and energy-efficiency of our Duette® honeycomb shades has made them an industry standard. EasyRise™ headrails and other advanced hardware systems provide for motorization and switch or remote operation.

Revolutionary Versatility.



Product Information

OPERATING MECHANISM	Durable headrail comprised of aluminum alloy in widths to 174" and heights to 174"
STANDARD	<ul style="list-style-type: none"> ■ Max area 60 sq. ft. ■ Cord operated
EASYRISE™	<ul style="list-style-type: none"> ■ Max area 150 sq. ft. ■ Continuous cord loop & clutch ■ Ideal for larger shades
FABRICS	Available in two textured, seamless, non-woven polyester fabrics. Fire retardant: passes NFPA 701-99 Small Scale Flammability testing. Provides 99% UV blockage. Fabrics are neutral to the exterior.
OPAQUE	<ul style="list-style-type: none"> ■ 3/4" pleat ■ Winter R value / double glazing 3.90 ■ Summer shading coefficient / double glazing 0.44
SEMI-OPAQUE	<ul style="list-style-type: none"> ■ 3/4" and 3/8" pleat ■ 3/4" Winter R value / Double glazing 3.90 ■ 3/4" Summer shading coefficient /double glazing 0.44
OPTIONS	<ul style="list-style-type: none"> ■ EasyView® Arch (semi-opaque) ■ LiteRise® ■ PowerRise® ■ Duolite™ Standard ■ Specialty shapes ■ Simplicity™ ■ UltraGlide® ■ Vertiglide™ (3/4" Semi-Opaque only)



Specifications Visit www.hdcontract.com/windowcoverings for product specifications, colors, and information on energy efficiency.

PART 2 – PRODUCTS

2.01 ACCEPTABLE MANUFACTURER

A. Hunter Douglas Contract/ 12400 Stowe Drive/ Poway, CA 92064 / Phone: 800-727-8953 Fax: 800-205-9819 / Website: www.hunterdouglascontract.com/windowcoverings, or architect approved equivalent.

B. Product substitutions must be approved by architect minimum of 30 days prior to close of bid.

2.02 COMMERCIAL HONEYCOMB SHADES

A. PRODUCT: Hunter Douglas “Duette® Commercial Honeycomb Shades”

B. MATERIALS:

1. FABRIC: Permanent flame-resistant textured, non-woven polyester formed into translucent 3/4" & 3/8" semi-opaque or 3/4" opaque hexagonal honeycomb cells in stacked tubular construction. Single cell construction; with each cell an independent piece of fabric. Finish selected by architect from manufacturer’s available contract colors.

2. HEAD/SILL RAIL: Standard 3/4" fabric type measuring 1.875" x .460" x .040" thick (3/8" fabric type measuring 1.0625" x .447" x .040" thick), (EasyRise™ 2" x 1.875" x .050" thick headrail with sill rail measuring 1.875" x .460" x .469" thick) constructed of aluminum alloy 6063. Internally fit with components required for specified performance and designed for smooth, quiet, trouble-free operation. Finish to be standard polyester based paint and to coordinate with fabric (EasyRise™ headrail white finish, bottom rail to coordinate with fabric.) Ends fitted with polycarbonate end caps color-coordinated with fabric (EasyRise™ headrail end caps white, bottom rail end caps in color & color-coordinated to sill rail.)

3. LIFTING MECHANISM: Molded engineering plastic cord-lock color coordinated to fabric with stainless steel components providing durable and crash-proof operation (EasyRise™ white engineered plastic rotary clutch mechanism provides ease of operation when continuous cord loop is activated and holds shade in place unless force is applied). Color-coordinated

braided polyester .035" lift cord and .086" tassel cord, tassel, and stop-ball (EasyRise™ color coordinated braided polyester .11" continuous cord loop provides uniform cord length with polycarbonate cord tensioner for additional safety. White nylon-covered polyester 2.45mm wide x 0.17mm thick lift tape allows for easy operation of heavy shades) Located on either side of individual shade unit as per architect’s request.

4. MOUNTING HARDWARE: Manufacturer’s standard polycarbonate universal hidden brackets (EasyRise™ nylon coated zinc-plated 1040 steel HR steel), provide a sleek, unobtrusive appearance.

5. ADDITIONAL AVAILABLE OPTIONS: UltraGlide®, Top-Down, Top-Down/Bottom-Up, 2 Blinds on 1 Headrail, Specialty Shapes, Skylight Systems, Hold Down Brackets, Motorization, (EasyRise™: Hold Down Brackets, Motorization).

2.03 FABRICATION

A. Blind measurements shall be accurate to within ± 1/8" or as recommended in writing by manufacturer

Wood Blinds

Our selection of fine wood blinds offers the natural elegance of cherry, ash, oak, and more, as well as a beautiful range of paints and stains. Country Woods® blinds give you a high-end option for boardrooms and executive suites, while Chalet Woods® blinds offer a more economical choice in 100% hardwood.

- Wide selection of decorative tapes, trims, and custom valances
- Exclusive TopShield™ finish and durable hardware assure long lifetime
- Optional de-Light™ feature minimizes light leakage



Expertly crafted.

Top-quality hardwoods.

Product Information

OPERATING MECHANISM	Low profile HeadMaster® headrail system with standard cord tilt and lift for smoother operation and long-life performance.
STANDARD HEADMASTER	<ul style="list-style-type: none"> ■ 1", 2", 2 1/2", or 2 5/8" slats ■ Widths 6" – 96" ■ Heights 12" – 120" ■ Area 45 – 50 sq. ft. ■ Standard cord tilt holds and tilts slat at any angle
LITERISE® TOUCH SYSTEM	<ul style="list-style-type: none"> ■ Available in 2" slat width only ■ Lifts and lowers blinds with the touch of a finger ■ No lift cords
MATERIAL	Crafted from 100% top quality hardwood, wide range of colors & finishes, scratch resistant
COUNTRY WOODS®	<ul style="list-style-type: none"> ■ 1", 2", or 2 5/8" slat sizes ■ Variety of braided ladder colors
CHALET WOODS®	<ul style="list-style-type: none"> ■ Available in 2" and 2 1/2" slat sizes ■ Variety of coordinating braided ladder colors
OPTIONS	<ul style="list-style-type: none"> ■ de-Light™ Feature ■ Specialty shapes (2" Country Woods®) ■ Decorative tape and trim ■ Motorization ■ Wand tilt



Specifications

Visit www.hdcontract.com/windowcoverings for product specifications, colors, and information on energy efficiency.

PART 2 – PRODUCTS

2.01 ACCEPTABLE MANUFACTURER

A. Hunter Douglas Contract/ 12400 Stowe Drive/ Poway, CA 92064 / Phone: 800-727-8953 Fax: 800-205-9819 / Website: www.hunterdouglascontract.com/windowcoverings, or architect approved equivalent.

B. Product substitutions must be approved by architect minimum of 30 days prior to close of bid.

2.02 HORIZONTAL WOOD BLINDS

A. PRODUCT: Hunter Douglas “Horizontal Non FR Wood Blinds”

B. MATERIALS:

1. SLATS: 2" (Country Woods® & Chalet Woods®) & 1" (Country Woods®) wide x 1/8" thick cut from quality selected hardwood with slat ends stained or painted to match slat color. Furnish not less than nominal 6.9 slats per foot (cloth tapes 7.2 slats per foot) on 2" Country Woods®, Chalet Woods® 7.2 slats per foot, 1" Country Woods® 13.9 slats per foot to ensure tight closure and light control. Finish with manufacturer's standard stained and lacquered or painted finish in colors selected by architect from manufacturer's available contract colors.

2. SLAT SUPPORT: Braided ladders of 100% polyester yarn color compatible with slats and spacing of ladder no more than 44mm (2" Country Woods® & Chalet Woods®), or 21.5mm (1" Country Woods®). Optional cloth tapes constructed of high

strength polyester-cotton blend webbing and spacing of no more than 44mm (2" Country Woods® & Chalet Woods®). Tapes spaced to comply with industry standards for size and weight of blind.

3. HEADRAIL: U-shaped profile with rolled edges, measuring 1 1/2" x 2 1/4" x .024" (2" Country Woods® & 2" Chalet Woods®), 1" x 1 1/2" x .024" (1" Country Woods®) constructed of corrosion resistant steel and providing a sleek low profile design. Internally fit with components required for specified performance and designed for smooth, quiet, trouble-free operation. Headrail finish to be standard baked-on polyester and to coordinate with slats. Ends fitted with zinc-coated steel end lock with adjustable tab for centering blinds.

4. BOTTOM RAIL: 2" wide x 5/8" thick trapezoidal (2" Country Woods®), rectangular (2" Chalet Woods®), or 1" wide x 5/8" thick rectangular (1" Country Woods®) quality selected hardwood with ends stained or painted to match slats. Color-coordinated engineered polymer tape buttons secure the ladder and cord. Finish to be manufacturer's standard stained and lacquered or painted finish to match slats.

5. LIFTING MECHANISM: Engineering polymer and galvanized steel housing cordlocks with polymer roller bearing and steel locking dogs, two-ply polyester cord filler in braided polyester jacket lift cords meet or exceed commercial specification 1029.86, and Break-Thru® safety tassel. Located on either side of individual blind unit as per architect's request.

6. TILTING MECHANISM: Permanently lubricated and fully enclosed standard cord tilt holds and tilts slats at any angle. Solid steel, corrosion resistant tilt rod. Optional wand tilt of worm and gear construction with slip clutch incorporated into tilter mechanism.

7. OPTIONAL TILT CONTROL WAND: Rounded 3/8" diameter constructed of quality selected hardwood stained and lacquered or painted to match slats and detachable without tools. Located on either side of individual blind unit as per architect's request.

8. MOUNTING HARDWARE: Manufacturer's standard .030" steel box brackets with baked-on polyester finish to match headrail with additional support brackets for blinds over 48" wide.

9. VALANCE: Crafted of selected hardwoods, stained and lacquered or painted to match slats.

10. ADDITIONAL AVAILABLE OPTIONS: Wand Tilt, de-Light™ Feature (2" Country Woods® & Chalet Woods®), 2 or 3 Blinds on 1 Headrail, Hold Down Brackets, Cutouts, Cloth Tapes.

2.03 FABRICATION

A. Blind measurements shall be accurate to within ± 1/8" or as recommended in writing by manufacturer.

Alternative Wood Blinds

Our selection of EverWood® and WoodMates® alternative wood blinds resist moisture and heat and won't warp, crack, peel, or fade, even in humid areas. EverWood® blinds beautifully blend North American hardwoods and specially selected composite materials. WoodMates® blinds are composed entirely of high-performance polymer. Both create a look that's attractive, affordable, and extraordinarily durable.



Practical. Durable. Economical.

Product Information

OPERATING MECHANISM	Both EverWood® and Woodmates® feature the HeadMaster® system with standard cord tilt and lift for smoother operation and long-life performance.
SINGLE BLINDS	<ul style="list-style-type: none"> ■ Fits window openings from 6" – 96" wide; from 12" – 120" high ■ Maximum area 45 sq. ft.
MULTIPLE BLINDS ON ONE HEADRAIL	<ul style="list-style-type: none"> ■ 2 on 1 — Fits openings from 12 1/4"– 96" wide; 12" – 120" high ■ 3 on 1 — Fits openings from 18 1/2"– 96" wide; 12" - 120" high ■ Maximum number of blinds – 3
MATERIAL	Alternative wood blinds offer the look and warmth of real wood blinds and the durability of a blind that will not fade, warp, or crack
EVERWOOD®	<ul style="list-style-type: none"> ■ Blend of North American hardwoods and specially selected composite materials ■ 2" and 2 1/2" slat sizes
WOODMATES®	<ul style="list-style-type: none"> ■ Composed entirely of high-performance polymer ■ 2" slat size
OPTIONS	<ul style="list-style-type: none"> ■ Inside mount ■ Outside mount ■ de-Light™ Feature (EverWood® only) ■ Cutouts ■ Cotton tapes ■ Motorization



Specifications

Visit www.hdcontract.com/windowcoverings for product specifications, colors, and information on energy efficiency.

PART 2 – PRODUCTS

2.01 ACCEPTABLE MANUFACTURER

A. Hunter Douglas Contract/ 12400 Stowe Drive/ Poway, CA 92064 / Phone: 800-727-8953 Fax: 800-205-9819 / Website: www.hunterdouglascontract.com/windowcoverings, or architect approved equivalent.

B. Product substitutions must be approved by architect minimum of 30 days prior to close of bid.

2.02 HORIZONTAL ALTERNATIVE WOOD BLINDS

A. PRODUCT: Hunter Douglas “Horizontal Non FR Faux Wood Blind”

B. MATERIALS:

1. SLATS: 2" wide x 3/20" thick blend of polystyrene and wood flour (EverWood®) or polystyrene (Woodmates®) with consistent color throughout eliminating slat end touch-up. Furnish not less than nominal 7.2 slats per foot to ensure tight closure and light control. Finish with manufacturer's standard colors selected by architect from manufacturer's available contract colors.

2. SLAT SUPPORT: Braided ladders of 100% polyester yarn color compatible with slats and spacing of ladder no more than 44mm. Optional cloth tapes constructed of high strength polyester-cotton blend webbing and spacing of no more than

44mm. Tapes spaced to comply with industry standards for size and weight of blind.

3. HEADRAIL: U-shaped profile with rolled edges, measuring 1 1/2" x 2 1/4" x .024" constructed of corrosion resistant steel and providing a sleek low profile design. Internally fit with components required for specified performance and designed for smooth, quiet, trouble-free operation. Headrail finish to be standard baked-on polyester and to coordinate with slats. Ends fitted with zinc-coated steel end lock with adjustable tab for centering blinds.

4. BOTTOM RAIL: 2" wide x 9/16" thick polystyrene rectangular in shape. Color-coordinated engineered polymer tape buttons secure the ladder and cord. Finish to be manufacturer's standard colors or stained finish to match slats.

5. LIFTING MECHANISM: Engineering polymer and galvanized steel housing cordlocks with polymer roller bearing and steel locking dogs, two-ply polyester cord filler in braided polyester jacket lift cords meet or exceed commercial specification 1029.86, and fracture-resistant polymer cord-stop color-coordinated to slat. Located on either side of individual blind unit as per architect's request.

6. TILTING MECHANISM: Permanently lubricated and fully enclosed standard cord tilt holds and tilts slats at any angle. Solid steel, corrosion resistant tilt rod. Optional wand tilt of worm and gear construction with slip clutch incorporated into tilter mechanism.

7. OPTIONAL TILT CONTROL WAND: PVC construction, color to match slats and detachable without tools. Located on either side of individual blind unit as per architect's request.

8. MOUNTING HARDWARE: Manufacturer's standard .030" steel box brackets with baked-on polyester finish to match headrail with additional support brackets for blinds over 48" wide.

9. VALANCE: Crafted blend of polystyrene and wood flour (EverWood®) or polystyrene (WoodMates®) with finish to match slats.

10. ADDITIONAL AVAILABLE OPTIONS: 2 or 3 Blinds on 1 Headrail, Hold Down Brackets, Cutouts, Cloth Tapes.

2.03 FABRICATION

A. Blind measurements shall be accurate to within $\pm 1/8"$ or as recommended in writing by manufacturer.

Vignette® FR Window Shadings

The soft, overlapping folds of Vignette® window shadings offer the visual impact of a custom drapery and the ease and durability of a roller shade. Overlapping folds highlight the beauty of the shading fabric, creating a distinctive, diffuse glow as light passes through the shade (full room-darkening available). Fabrics come in a range of weaves and textures; all are durable and soil-resistant.

Elegant. Contoured Fabric Folds.



Product Information

OPERATING MECHANISM	<ul style="list-style-type: none"> ■ Opens from bottom to top ■ Hardware is color coordinated with fabric ■ Single cord loop control and bottom rail weights to maintain alignment
STANDARD RECTANGULAR	<ul style="list-style-type: none"> ■ Standard configuration fits widths from 12" – 72" ■ Fits heights from 12" – 96"
MULTI-PANEL	<ul style="list-style-type: none"> ■ Matched panels span larger openings, with fabric cut at exact center ■ Fits widths from 12" - 72" ■ Fits heights from 12" - 96" ■ Two-or-three panel configurations
FABRICS	<ul style="list-style-type: none"> ■ 4" fabric-fold size ■ 2 fabrics ■ Woven front fabric affixed to neutral white backing ■ Fire retardant, passes NFPA 701 Small Scale Flammability testing
HEATHER & LINEN	<ul style="list-style-type: none"> ■ Winter R value / double glazing = 2.63 ■ Summer shading coefficient / double glazing = 0.32 ■ UV blockage 99%
OPTIONS	<ul style="list-style-type: none"> ■ Spacer blocks ■ Hold-down brackets ■ Extension brackets (end mount only) ■ Optional cord drop lengths (white only) ■ Color coordinated cord loop and end caps ■ Motorization ■ Inside mount ■ Outside mount ■ Fabric covered headrail ■ All fabrics available in cut yardage



Specifications

Visit www.hdcontract.com/windowcoverings for product specifications, colors, and information on energy efficiency.

PART 2 – PRODUCTS

2.01 ACCEPTABLE MANUFACTURER

A. Hunter Douglas Contract/ 12400 Stowe Drive/ Poway, CA 92064 / Phone: 800-727-8953 Fax: 800-205-9819 / Website: www.hunterdouglascontract.com/windowcoverings, or architect approved equivalent.

B. Product substitutions must be approved by architect minimum of 30 days prior to close of bid.

2.02 COMMERCIAL WINDOW SHADINGS

A. PRODUCT: Hunter Douglas “Vignette® FR Window Shadings”

B. MATERIALS:

1. FABRIC: Combination of permanent flame-resistant 100% polyester fabrics on both front and rear. Constructed of looped overlapping 4" fabric folds located on front with neutral white back fabric providing uniform exterior look. Fabric combination transmits filtered light with no view through. Finish selected by architect from manufacturer's available contract colors.

2. HEAD/BOTTOM RAIL: Standard headrail type measuring 3.8125" x 3.3125" x .040" thick constructed of aluminum alloy 6063 conceals shading when fully raised. Internally fit with components required for specified performance and designed for smooth, quiet, trouble-free operation. Matching fabric-covered tubular-shaped steel bottom rail provides uniform look. Headrail finish to be standard polyester-based paint and to coordinate with fabric. Ends fitted with engineering plastic end caps measuring 3 13/16" X 3.1875" color coordinated with front fabric.

3. LIFTING/ ROTATION MECHANISM: White engineering plastic spring-tempered rotary clutch system raises and lowers shading providing ease of operation when continuous cord loop is activated and holds shadings in place until force is applied. Color coordinated braided polyester 2.4mm diameter cord loop with tensioner to secure cord loop. Located on either side of individual shade unit as per architect's request.

4. MOUNTING HARDWARE: Manufacturer's standard white engineering plastic hidden brackets, provide a sleek, unobtrusive appearance.

5. ADDITIONAL AVAILABLE OPTIONS: Coordinating Fabric Covered Headrail, Motorization, Optional Cord Lengths, Hold Down Brackets.

2.03 FABRICATION

A. Blind measurements shall be accurate to within $\pm 1/8"$ or as recommended in writing by manufacturer..

Palm Beach® Shutters

Palm Beach® shutters from Hunter Douglas feature two shutter styles and louver sizes that combine fashionable good looks with superb durability. Designed for quick installation and easy care, our shutters have a durable finish that never needs painting or sanding. Palm Beach shutters add a relaxed sense of luxury to virtually any room and assure years of great performance.



Great Looks. Ultimate Durability.

Product Information

OPERATING MECHANISM	Three hardware systems available in either the Palmetto or Lantana style, and framed or unframed configurations.
STANDARD HINGED PANEL SYSTEM	<ul style="list-style-type: none"> ■ Folds open ■ Accommodates window openings from 10" – 30" wide; 20" – 120" high
BI-FOLD TRACK SYSTEM	<ul style="list-style-type: none"> ■ Slides and folds open ■ Accommodates window openings from 12" – 240" wide; 20" – 120" high
BI-PASS TRACK SYSTEM	<ul style="list-style-type: none"> ■ Slides open ■ Accommodates window openings from 12" – 240" wide; 20" – 120" high
STYLE	Both unique styles, Palmetto and Lantana, are available in a 2 3/8" or 3 3/8" tapered louver sizes
PALMETTO®	<ul style="list-style-type: none"> ■ Classic look tilt-bar system opens and closes louvers
LANTANA®	<ul style="list-style-type: none"> ■ Patented internal gear-driven system opens and closes louvers
MATERIAL	<ul style="list-style-type: none"> ■ Advanced poly-satin construction ■ Guaranteed never to warp, fade, chip or peel ■ UV resistant ■ Material meets or exceeds all requirements of NFPA 701 Small Scale Flammability testing for commercial and hospitality applications ■ Winter R Value / Double Glazing = 2.01 ■ Summer shading coefficient / double glazing = 0.24 thru 0.26
OPTIONS	<ul style="list-style-type: none"> Traditional Frame (outside mount only) ■ Z Frame (inside mount only) ■ Contemporary Frame (inside & outside mount) ■ Double-hung windows ■ Café windows ■ Bay and bow windows ■ French and patio door ■ Colonial Frame



Lantana



Palmetto



Specifications

Visit www.hdcontract.com/windowcoverings for product specifications, colors, and information on energy efficiency.

PART 2 - PRODUCTS

2.01 ACCEPTABLE MANUFACTURER

A. Hunter Douglas Contract/ 12400 Stowe Drive/ Poway, CA 92064 / Phone: 800-727-8953 Fax: 800-205-9819 / Website: www.hunterdouglascontract.com/windowcoverings, or architect approved equivalent.

B. Product substitutions must be approved by architect minimum of 30 days prior to close of bid.

2.02 COMMERCIAL SHUTTERS

A. PRODUCT: Hunter Douglas "Palm Beach® Shutters"

B. MATERIALS:

1. ROTATION SYSTEM: Palmetto tilt bar (optional Lantana™ gear-driven without tilt bar) system provides tight and uniform closure of all louvers at once. Internally fit with components for required specified performance and designed for smooth, quiet, trouble-free operation. Tilt bar positioned on front and centered on each panel. (Palmetto available with optional offset rear panel tilt bar).

2. LOUVERS: NFPA Standard 701 compliant flame retardant exterior grade poly-satin vinyl extrusions in 2 3/8" (Optional 3 3/8") tapered louvers rotating 180 degrees when actuated by tilt bar (optional Lantana™ gear-driven) rotation

system. Equidistant computer positioned louvers allow for equal spacing providing uniform look from shutter to shutter. Constructed to prevent fading, cracking, peeling, & warping of materials. Finish to be standard impregnated color throughout and to match panel & frame.

3. PANEL: NFPA Standard 701 compliant flame retardant exterior grade poly-satin vinyl 4" (optional 2") top & bottom rail with full-length aluminum reinforced stiles (& T-posts when required) providing maximum strength at all stress points. Color matching stile covers and polycarbonate stile caps conceal fabrication hardware providing finished look. (Horizontal divider rails provide additional strength for larger heights). Constructed to prevent fading, cracking, peeling, & warping of materials. Finish to be standard impregnated color throughout and to match louvers & frame.

4. FRAME: Contemporary frame with 2 1/8" overall depth and 15/16" backside overall width (Traditional Frame overall depth 2 3/8" and 2 5/8" backside overall width, Colonial Frame overall depth 2", overall width 2 5/16", backside width 15/16", Z-Frame overall depth 2", overall width 2 1/16", backside width 15/16") constructed of exterior grade poly-satin flame retardant

compliant with NFPA Standard 701 designed to compensate for out-of-square windows, provide superior light blockage, & ease of installation. Hinges to match frame, panel, & louvers.

5. TRACKS: Optional Bi-Fold (overall depth 2 7/8", overall backside width 2") & Bi-Pass (overall depth 4 1/2", overall backside width 2") track system available.

6. MOUNTING HARDWARE: Manufacturer's standard screws allow for an easy and proper installation.

7. ADDITIONAL AVAILABLE OPTIONS: Stainless Steel Hinges, Removable Pin Hinge, Double-Hung Panel Configuration, Café Style Configuration, Astragal.

2.03 FABRICATION

A. Shutter measurements shall be accurate to within ± 1/8" or as recommended in writing by manufacturer.

Vertical Blinds

Our vertical blinds allow maximum coverage of large windows at a cost-effective price. Our vertical track is exceptionally durable and features a range of pantagraph and carrier train systems to fit a variety of applications, including choices for curves, slopes, and motorization.

Versatile. Cost Effective.



Product Information

OPERATING MECHANISM	Highly durable pantagraph and carrier train systems rotate louvers 180° for tight closure, providing excellent energy savings and light control.
S-2000	<ul style="list-style-type: none"> ■ Manual pantagraph system (5/16" x .025") ■ Max. size 16 ft. ■ Plastic tilt chain ■ Painted aluminum channel (2" x 1 1/4" x .035", white) ■ Covered end caps ■ Optional wand control
PERMALIGN®	<ul style="list-style-type: none"> ■ Stainless-steel carrier train system (5/16" x .008") ■ Motorization available (tilt only) ■ Max. size 16 ft. ■ Nickel/brass tilt chain ■ Painted aluminum channel (1 3/4" x 1 5/16" x .045", ivory) ■ Covered end caps available (standard on #10) ■ Optional wand control
PERMATRAK®	<ul style="list-style-type: none"> ■ Plastic carrier train system (5/16" x .025") ■ Motorization available (tilt only) ■ Max. size 16 ft. ■ Nickel/brass tilt chain ■ Painted aluminum channel (1 3/4" x 1 5/16" x .045", gray)
PC0440	<ul style="list-style-type: none"> ■ Stainless-steel carrier train system (5/16" x .025") ■ Motorization available (tilt only) ■ Max. size 25 ft. ■ Nickel/brass tilt chain ■ Anodized aluminum channel (1 3/4" x 1 5/16" x .045") ■ Covered end caps available (#10 only) ■ Optional wand control
SPECIALTY TRACKS	<ul style="list-style-type: none"> ■ Available in straight, curved, sloped, top/bottom track, and arch configurations ■ Max. size 20 ft. ■ Motorization available ■ Celcon bead chain ■ Anodized aluminum channel (1 1/2" x 1" x .045") ■ Covered end caps
LOUVERS	
VINYL	<ul style="list-style-type: none"> ■ Available with .030" gauge, flat (2" & 3 1/2") , and curved (3 1/2") louvers ■ Perforated louvers (13% openness), available in 2" & 3 1/2" gray, ivory, and white
ALUMINUM	<ul style="list-style-type: none"> ■ 3 1/2" curved spring-tempered aluminum (.008")
FABRIC	<ul style="list-style-type: none"> ■ 4 FR fabrics (Aberdeen 100% Fiberglass, Caldwell FR and Cumulus FR 100% polyester, Empress V 36% fiberglass, 64% PVC / 5% openness) ■ 3 1/2" louvers
OPTIONS	<ul style="list-style-type: none"> ■ PermAssure® safety wand ■ PermaClear® groovers ■ Motorization (except S-2000) ■ Valance ■ Bottom chains ■ Sealed bottom weights ■ Bronze track (PermaAlign® only)



Specifications Visit www.hdcontract.com/windowcoverings for product specifications, colors, and information on energy efficiency.

PART 2 – PRODUCTS

2.01 ACCEPTABLE MANUFACTURER

A. Hunter Douglas Contract/ 12400 Stowe Drive/ Poway, CA 92064 / Phone: 800-727-8953 Fax: 800-205-9819 / Website: www.hunterdouglascontract.com/windowcoverings, or architect approved equivalent.

B. Product substitutions must be approved by architect minimum of 30 days prior to close of bid.

2.02 VERTICAL BLINDS

A. PRODUCT: Hunter Douglas “Contract Vertical Blind”

B. MATERIALS:

1. LOUVERS: Vinyl extruded from PVC 3 1/2" (optional 2" flat & flat perforated) wide x .032" maximum thickness curved (optional flat, flat perforated) with standard overlap of not less than 3/8" and stacking 7/32" apart. Groovers extruded from PVC with .030" maximum thickness with 1/8" clear lip to accept inserts of all available commercial fabrics. Fabric to be flame retardant fiberglass (Aberdeen FR) or polyester (Cumulus FR, Caldwell FR). (Empress V 36% fiberglass, 64% PVC, 5% openness). Curved .008" gauge 3 1/2" wide heat-treated extruded aluminum, dip coated with baked polyester coating. Finish with manufacturer's standard colors selected by architect from manufacturer's available contract colors.

2. CHANNEL: Standard type (Permalign) measuring 1 3/4" x 1 5/16" x .045" thick constructed of painted ivory aluminum. Internally fit with .24" diameter heavy-duty extruded aluminum tilt rod, engineered thermal plastic carrier trucks, end caps and components required for specified performance and designed for smooth, quiet, trouble free operation.

3. CARRIER TRUCKS: Engineered thermal plastic 7/16" thick and 1 5/8" wide with wheels and worm-and-spur gears to ensure rotation with perfect alignment and synchronization. Solid molded engineered thermal plastic asymmetrical carrier stems provide ease of louver installation and removal. Wheel-less lead carrier moves along elongated bearing surface.

4. SPACER LINKS: Stainless steel 5/16" X .008" spacer links smoothly space and stabilize carrier trucks.

5. ROTATION: Standard #6 (#10 for heavy duty or large applications) qualified nickel-plated brass tilt chain provides 180 degrees direct rotation by activating tilt gear within end cap assembly (#10 standard with covered end cap assembly and 3 to 1 ratio) in turn actuating heavy-duty extruded aluminum tilt rod and worm-and-spur gears in carrier trucks. Located on either side of individual blind unit as per architect's request.

6. TRAVERSING: Stretch resistant, non-fraying, and lint free lock knit polyester cord provide traversing capabilities for side, center, and off-center draws.

7. MOUNTING HARDWARE: Manufacturer's standard L-bracket with clip (outside mounts) & clip only (inside mounts) provide required support.

8. ADDITIONAL AVAILABLE OPTIONS: Valance, Wand Control, Motorization, Bronze Rail, S-2000 (White) - PC0440 (Anodized Aluminum) - Pertrak (Painted Grey) - & Specialty Track (Anodized Aluminum) Headrail Systems.

2.03 FABRICATION

A. Blind measurements shall be accurate to within ± 1/8" or as recommended in writing by manufacturer.

Woven Wood FR Shades

FR woven wood shades offer the natural beauty of reeds, grasses, bamboo, and jute, with durable hardware systems, stacking options, and a range of opacity levels.

- Three styles in nine colors
- Optional stacking: roller shade, roman shade
- Design options: two-on-one headrail, three-on-one headrail, top-down/bottom-up
- Optional lifting systems – clutch lifting system

Natural Beauty.



Specifications Visit www.hdcontract.com/windowcoverings for product specifications, colors, and information on energy efficiency.

PART 2 – PRODUCTS

2.01 ACCEPTABLE MANUFACTURER

A. Hunter Douglas Contract/ 12400 Stowe Drive/ Poway, CA 92064 / Phone: 800-727-8953 Fax: 800-205-9819 / Website: www.hunterdouglascontract.com/windowcoverings, or architect approved equivalent.

B. Product substitutions must be approved by architect minimum of 30 days prior to close of bid.

2.02 COMMERCIAL WOVEN WOOD SHADES

A. PRODUCT: Hunter Douglas “Woven Wood FR Shades”

B. MATERIALS:

1. FABRIC: Flame retardant treated natural fabrics constructed of woods, reeds, bamboo, & grasses with 100% polyester yarns. Constructed of even overlapping folds when raised and hangs flat in fully lowered position. Fabric selections

create sheer and semi opaque applications. Finish selected by architect from manufacturer’s available contract colors.

2. HEAD/BOTTOM RAIL: Standard headrail type measuring 1-1/2" X 3/4" constructed of wood. Mounted with components required for specified performance and designed for smooth, quiet, trouble-free operation. Matching fabric-rolled 3/4" X 3/8" wood bottom rail provides uniform look.

3. LIFTING / ROTATION MECHANISM: Brown engineering plastic/antique finish metal pulleys with gravity feed cord lock raises and lowers shade providing ease of operation when cord is activated and holds shade in place until force is applied. Color coordinated braided polyester 1.8mm diameter cord with color coordinated wood tassel per individual cord. Located on either side of individual shade unit as per architect’s request.

4. MOUNTING HARDWARE: Manufacturer’s standard metal brackets allow for ceiling or wall installation.

5. VALANCE: Standard 6-1/2" in height attached to front edge of headrail system provides uniform look to shade. Standard 1-1/2" valance returns provide uniformity to side view of shade.

6. ADDITIONAL AVAILABLE OPTIONS: Clutch Operation, Top-Down/Bottom-Up Applications, Motorization, Optional Cord Lengths, Hold Down Brackets, Extension Brackets.

2.03 FABRICATION

A. Blind measurements shall be accurate to within $\pm 1/8"$ or as recommended in writing by manufacturer.

Pleated FR Window Shades

A versatile performer, our pleated shades combine superb control of privacy, daylight, and heat with nearly endless design possibilities. Two durable FR fabric selections include over 28 choices for color, texture, and effect, including semi-sheer metallized and semi-opaque.

Versatile. Durable.



Additional Products



FR Wood Blinds FR Alternative Wood Blinds

Keep an eye out for the introduction of our first line of FR-rated wood blinds and alternative wood blinds, expected later this year. Hunter Douglas' new FR wood blinds and FR alternative wood blinds will make it possible for the first time to use wood blinds in any commercial setting.



Luminette® Privacy Sheers

Luminette offers the light providing quality of classic sheers and the privacy of soft draperies. Currently not available as flame retardant.



Alouette® LightLouvers

Elliptical fabric louvers combine the architectural beauty of wood shutters, the soft fabric finish of a shade, and the light control and privacy of traditional blinds. Currently not available as flame retardant.

Large Photo Right:

City Hall Alphen van den Rijn, Netherlands
Architect: Erick van Egeraat Associated Architects
Product: Roller Shades FR



Above, Left to Right:

Immaculate Heart of Mary Motherhouse, United States
Architect: Susan Maxman & Partners
Product: Duette® FR Shades

ABN AMRO Plaza, United States
Architect: DeStefano & Partners, Ltd.
Product: Horizontal Aluminum Blinds CX80

IIT State Street Building, United States
Architect: Murphy/Jahn
Product: Horizontal Aluminum Blinds CD80

Credit Lyonnais Tower, France
Architect: Christian de Portzamparc
Product: Horizontal Aluminum Blinds

Cover:

KLM OCC, Schiphol, Netherlands
Architect: Van Den Broek en Bakema Architects
Product: Horizontal Aluminum Blinds



Environmental benefits:

- Aluminum blinds use substantial recycled content (from 70 – 95%)
- Roller Shades feature GreenScreen® PVC-free, environmentally friendly fabrics
- Silhouette® and Vignette® FR Shades' insulating layer of air reduces thermal transfer and solar gain and blocks UV radiation
- Duette® shades' energy-efficient cellular design enhances R-value and shading coefficient; 99% UV blocking



For the last 80 years, we've been fortunate enough to help turn countless innovative sketches into innovative buildings. Architects and designers from around the world have taken advantage of Hunter Douglas' unmatched project development, service, and support. Chances are, you've seen more of Hunter Douglas than you think. Just look around. With major operation centers in North America, Europe, Latin America, Asia, and Australia, we've contributed to thousands of high-profile installations, from retail and commercial facilities to major transit centers and government buildings. Not only are the world's architects and designers our partners, they're our inspiration. As they continue to raise the bar for excellence, we're creating projects to bring their visions to life.

Learn More

- Call 800.727.8953 to speak with a customer service specialist
- Visit www.hunterdouglascontract.com/windowcoverings
- Sign up for *Profiles*, our international email bulletin

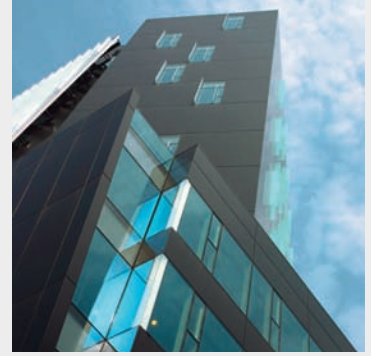
HunterDouglasContract

WINDOW COVERINGS

CEILING

SOLAR CONTROL

FAÇADES



Hunter Douglas Contract Window Coverings
12250 Parkway Centre Drive, Poway, CA 92064
www.hunterdouglascontract.com/windowcoverings
Customer Service: 800-727-8953
Fax: 800-205-9819
Sales: 800-964-2580