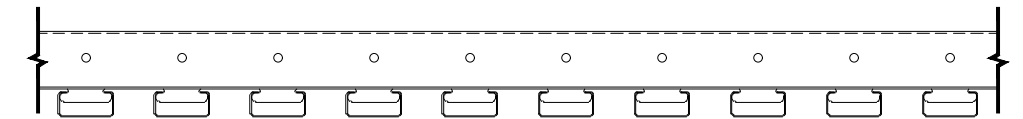


### SUSPENSION SPECIFICATIONS

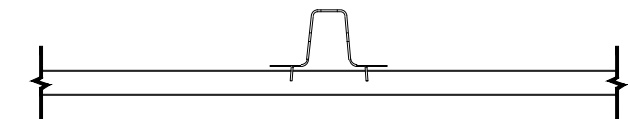
SCALE: NOT TO SCALE

### INTERIOR INSTALLATION



### SIDE VIEW OF UNIVERSAL CARRIER WITH PANEL

SCALE: 3" = 1'-0"



### END VIEW OF UNIVERSAL CARRIER WITH PANEL

SCALE: 3" = 1'-0"

### UNIVERSAL CARRIER\*

**MATERIAL:** 0.040" ALUMINUM

**FINISH:** MATTE BLACK

**PART LENGTH:** 16'-0"

\*CARRIER SPLICE REQUIRED, SEE DETAIL A1.5



5015 Oakbrook Parkway, Suite 100  
Norcross, GA 30093  
T 800.366.4327  
F 770.806.0214  
HDarchitectural.com

*All rights reserved. This drawing is the property of Hunter Douglas. It may not be copied or multiplied, neither wholly nor partly. It may not be submitted for perusal to third parties.*

### SPECIFICATIONS

(unless noted otherwise)

MATERIAL: .020" | .025" ALUMINUM BOX 2 PANEL | .040" ALUMINUM UNIVERSAL CARRIER  
FINISH: PAINT | POWDER COAT | DECORATED WOOD FINISH | WOOD VENEER | LUXACOTE  
PERFORATION: NOT AVAILABLE

### CARRIER SPEC

PROJECT: LINEAR BOX 2 PRODUCT SPECIFICATIONS  
DRAWING NUMBER: BOX2-A1.2  
SCALE: AS SHOWN  
DRAWN BY: HDA ENGINEERING  
DATE: 12/5/16