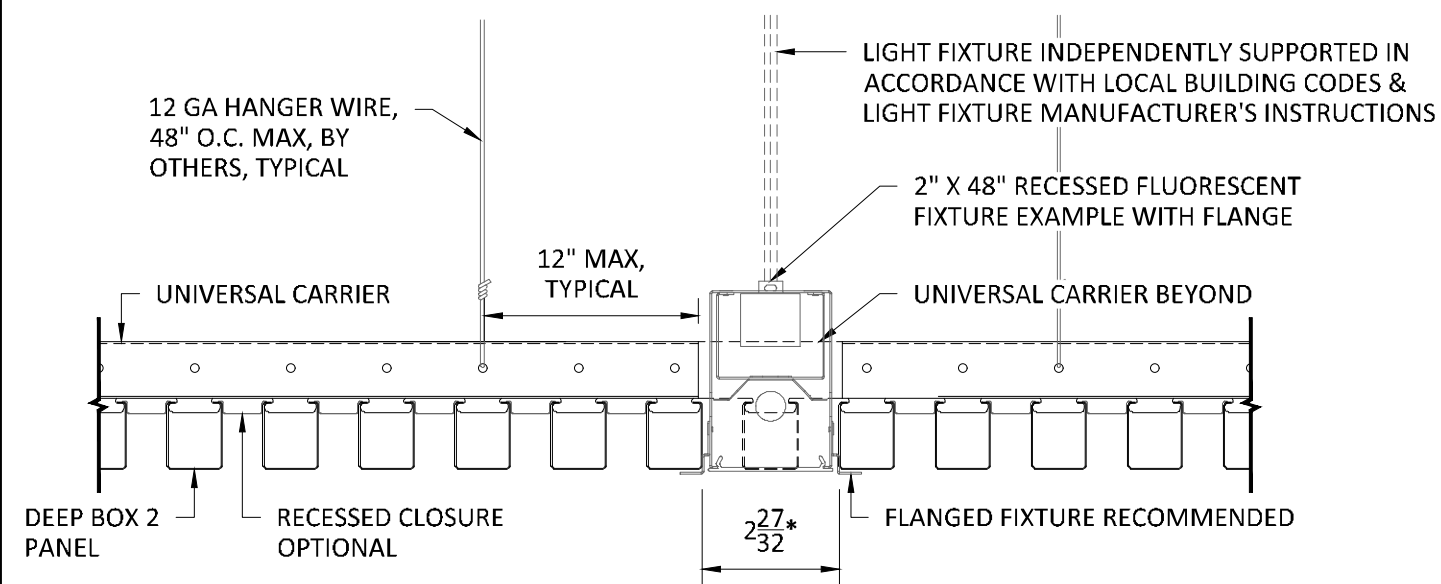


### TYPICAL ISOMETRIC

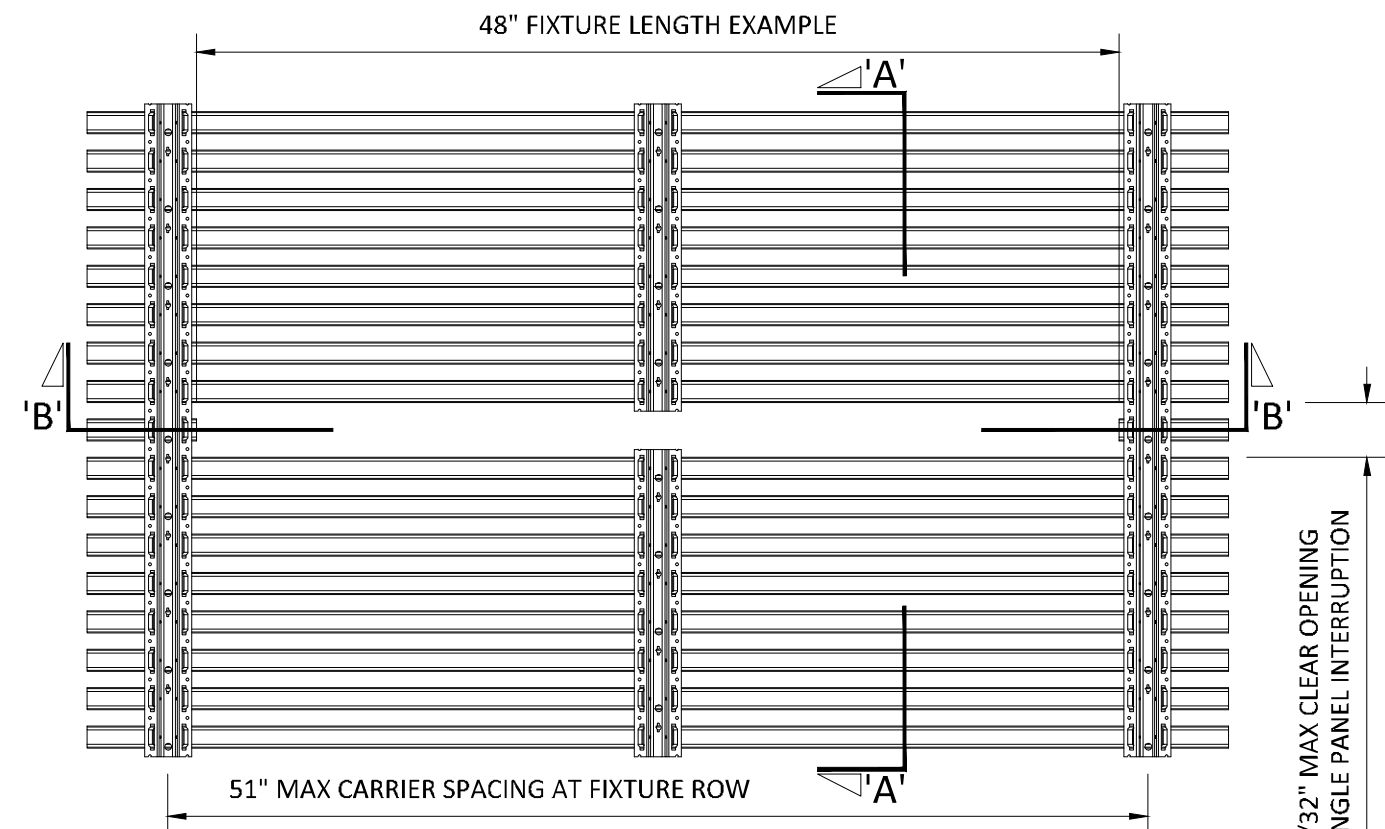
SCALE: NOT TO SCALE



### SECTION 'A'

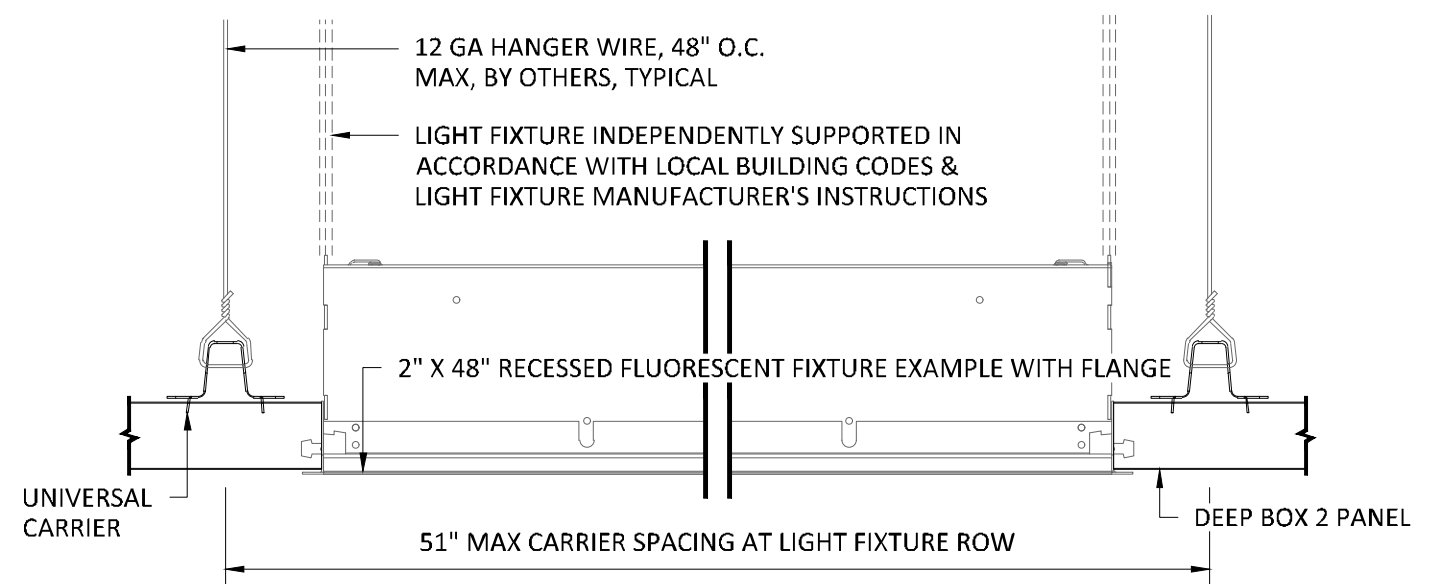
SCALE: 3" = 1'-0"

\*2<sup>7</sup>/<sub>32</sub>" MAX CLEAR OPENING, PANEL EDGE TO PANEL EDGE, FOR SINGLE PANEL INTERRUPTION.  
4<sup>7</sup>/<sub>32</sub>" MAX CLEAR OPENING, PANEL EDGE TO PANEL EDGE, FOR DOUBLE PANEL INTERRUPTION.



### TOP VIEW

SCALE: NOT TO SCALE



### SECTION 'B'

SCALE: 3" = 1'-0"

NOTE: FIXTURE WITH TRIM FLANGE NOT BY HUNTER DOUGLAS

### SPECIFICATIONS

(unless noted otherwise)

MATERIAL: .020" | .025" ALUMINUM DEEP BOX 2 PANEL | .040" ALUMINUM  
UNIVERSAL CARRIER  
FINISH: PAINT | POWDER COAT | DECORATED WOOD FINISH | WOOD VENEER |  
LUXACOTE  
PERFORATION: NOT AVAILABLE

### INTERRUPTED PANEL FOR TYPICAL FIXTURE

PROJECT: LINEAR DEEP BOX 2 PRODUCT SPECIFICATIONS  
DRAWING NUMBER: DEEP BOX2-A1.8  
SCALE: AS SHOWN  
DRAWN BY: HDA ENGINEERING  
DATE: 12/5/16