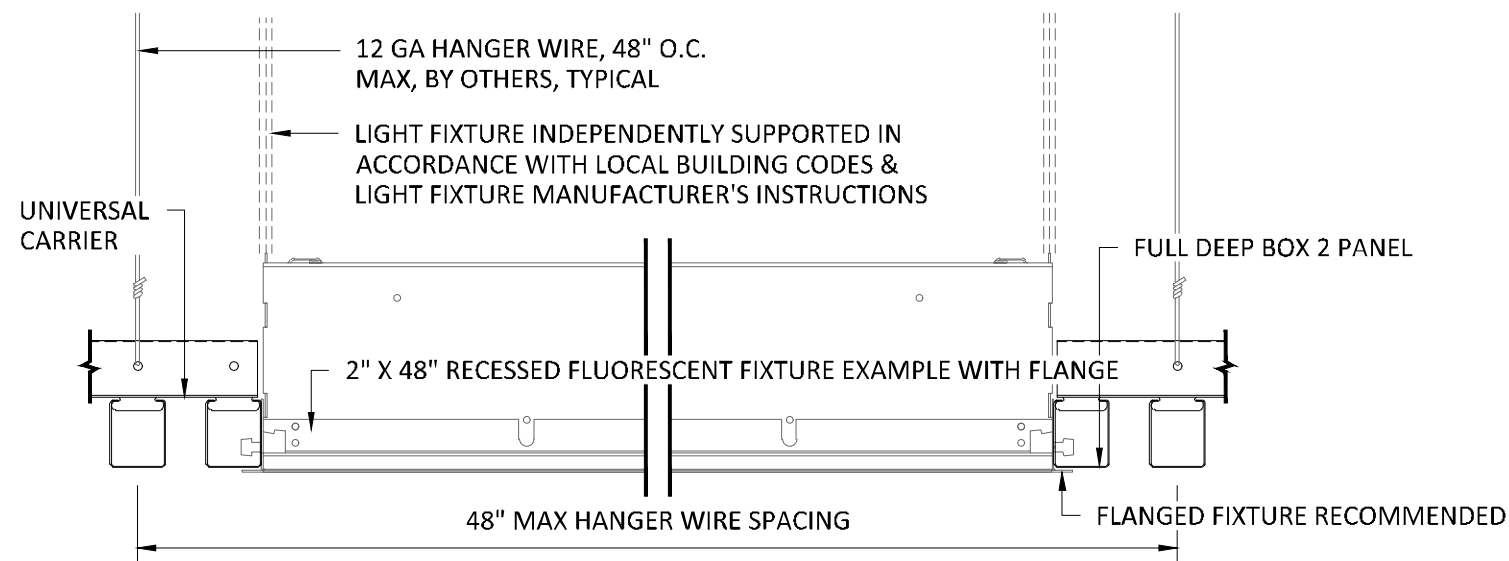


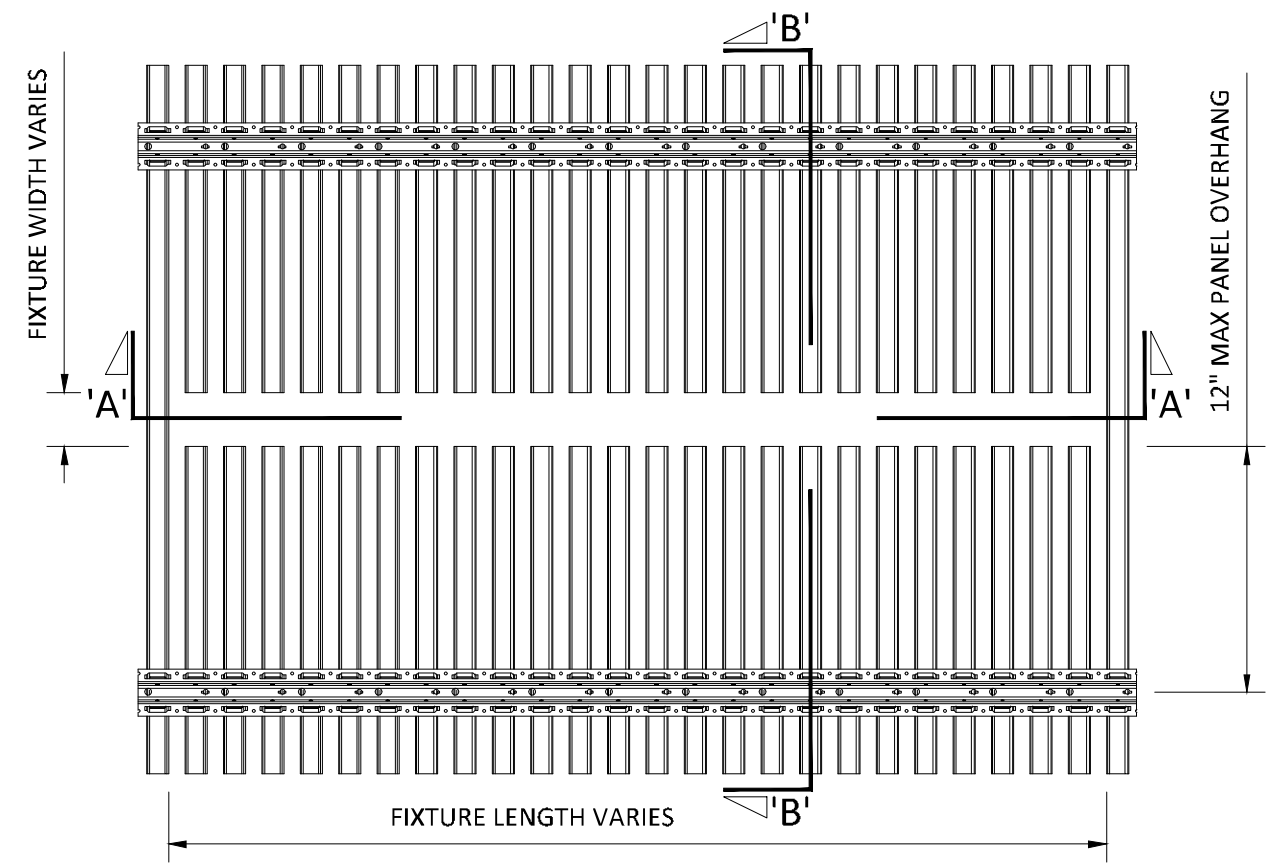
TYPICAL ISOMETRIC

SCALE: NOT TO SCALE



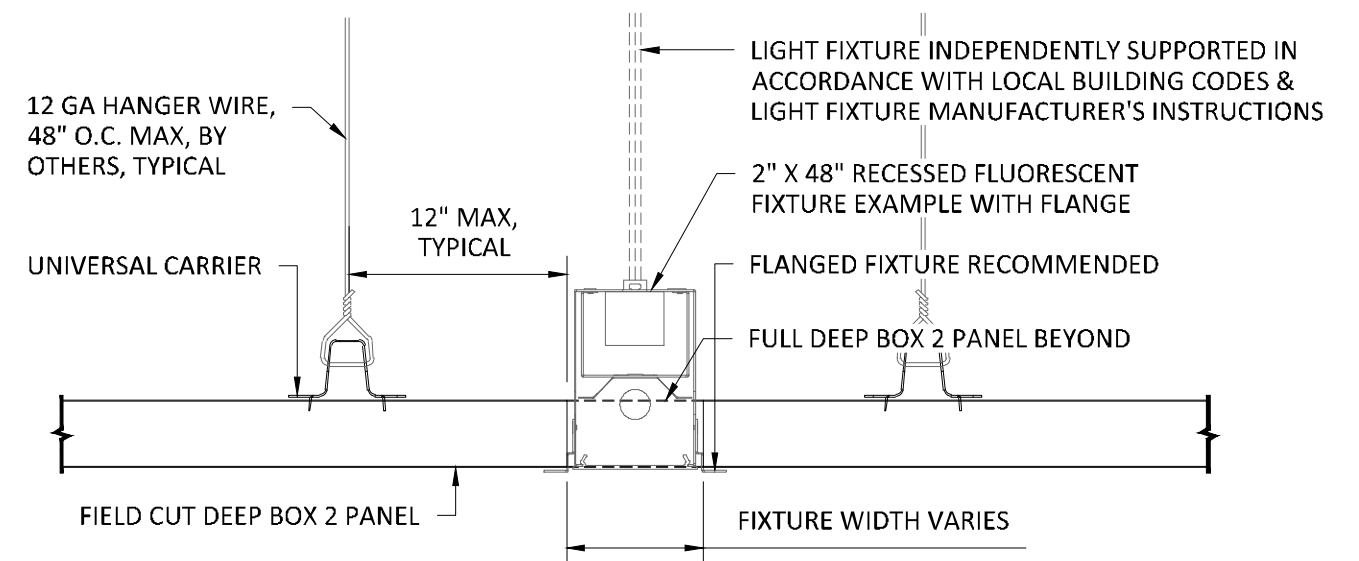
SECTION 'A'

SCALE: 3" = 1'-0"



TOP VIEW

SCALE: NOT TO SCALE



SECTION 'B'

SCALE: 3" = 1'-0"

NOTE: FIXTURE WITH TRIM FLANGE NOT BY HUNTER DOUGLAS

SPECIFICATIONS

(unless noted otherwise)

MATERIAL: .020" | .025" ALUMINUM DEEP BOX 2 PANEL | .040" ALUMINUM
UNIVERSAL CARRIER
FINISH: PAINT | POWDER COAT | DECORATED WOOD FINISH | WOOD VENEER |
LUXACOTE
PERFORATION: NOT AVAILABLE

FIELD CUT PANEL FOR TYPICAL FIXTURE

PROJECT: LINEAR DEEP BOX 2 PRODUCT SPECIFICATIONS
DRAWING NUMBER: DEEP BOX2-A1.9
SCALE: AS SHOWN
DRAWN BY: HDA ENGINEERING
DATE: 12/5/16