

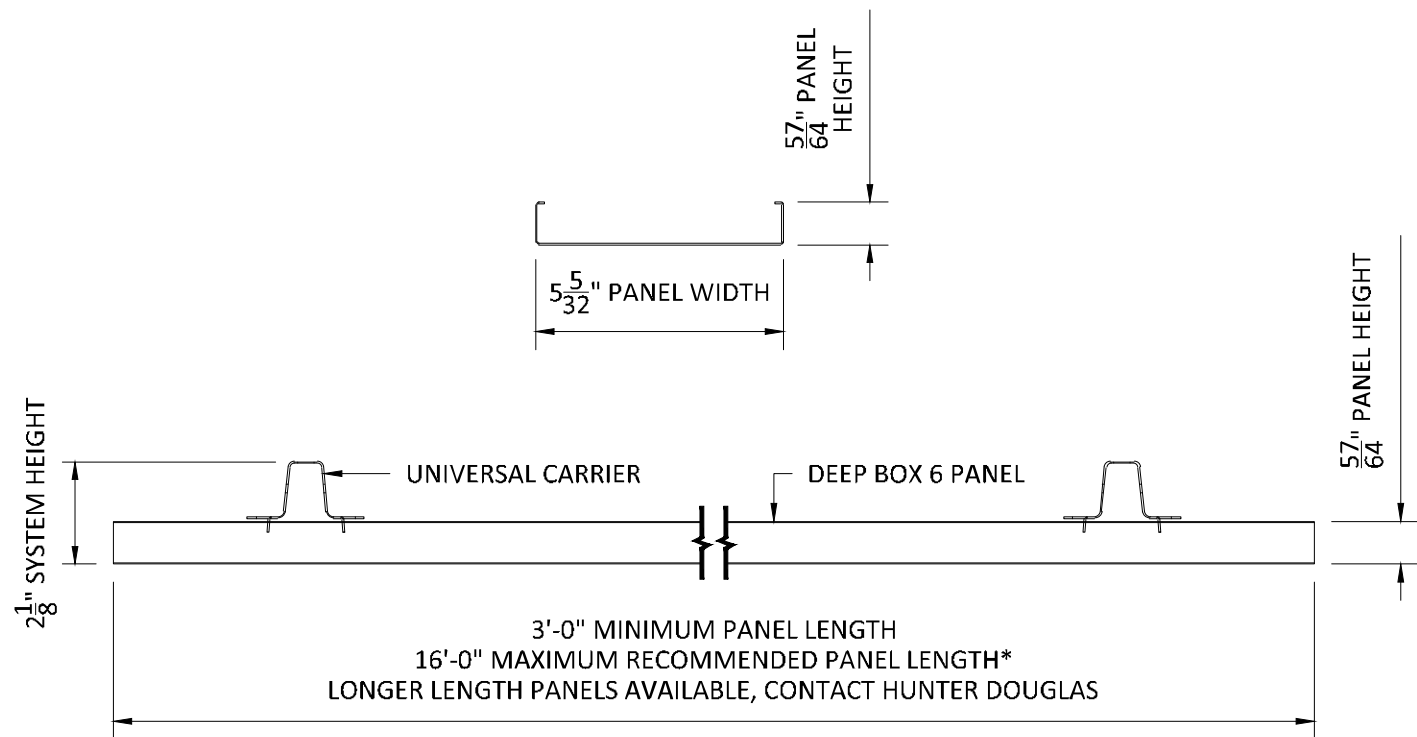
#### SPECIFICATIONS

(unless noted otherwise)

MATERIAL: .020" | .025" | .032" | .040" ALUMINUM DEEP BOX 6 PANEL | .040" ALUMINUM UNIVERSAL CARRIER  
FINISH: PAINT | POWDER COAT | DECORATED WOOD FINISH | WOOD VENEER | LUXACOTE  
PERFORATION: NOT AVAILABLE

#### OVERALL ISOMETRIC VIEW

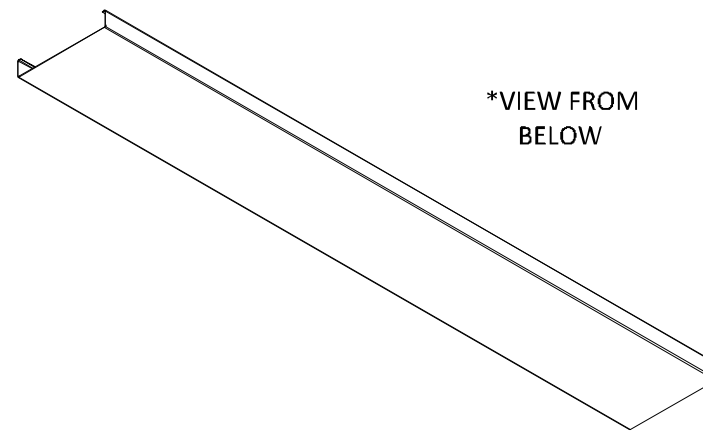
PROJECT: LINEAR DEEP BOX 6 PRODUCT SPECIFICATIONS  
DRAWING NUMBER: DEEP BOX6-A1.0  
SCALE: AS SHOWN  
DRAWN BY: HDA ENGINEERING  
DATE: 12/5/16



## FACTORY END & SIDE PANEL VIEW

SCALE: 3" = 1'-0"

\*PANEL LENGTHS AVAILABLE IN  $\pm \frac{1}{8}$ " TOLERANCE,  
MINIMUM QUANTITIES MAY APPLY



\*VIEW FROM  
BELOW

## MATERIAL THICKNESS

DEEP BOX 6: .020", .025", .032", .040" ALUMINUM

## PANEL FINISHES

PAINTED & POWDER COATED - INTERIOR & EXTERIOR

LUXACOTE - INTERIOR & EXTERIOR

DECORATED WOOD FINISH (POWDER COATED) - INTERIOR &  
EXTERIOR

WOOD VENEER - RECOMMENDED INTERIOR ONLY

10'-0" MAXIMUM RECOMMENDED PANEL LENGTH WITHOUT  
FINGER-JOINTING OF VENEER

16'-0" MAXIMUM RECOMMENDED PANEL LENGTH WITH  
FINGER-JOINTING OF VENEER

## PANEL MATERIALS & FINISHES

SCALE: NOT TO SCALE



5015 Oakbrook Parkway, Suite 100  
Norcross, GA 30093  
T 800.366.4327  
F 770.806.0214  
HDarchitectural.com

*All rights reserved. This drawing is the property of Hunter Douglas. It may not be copied or multiplied, neither wholly nor partly. It may not be submitted for perusal to third parties.*

## SPECIFICATIONS

(unless noted otherwise)

MATERIAL: .020" | .025" | .032" | .040" ALUMINUM DEEP BOX 6 PANEL | .040"

ALUMINUM UNIVERSAL CARRIER

FINISH: PAINT | POWDER COAT | DECORATED WOOD FINISH | WOOD VENEER |

LUXACOTE

PERFORATION: NOT AVAILABLE

## PANEL SPEC

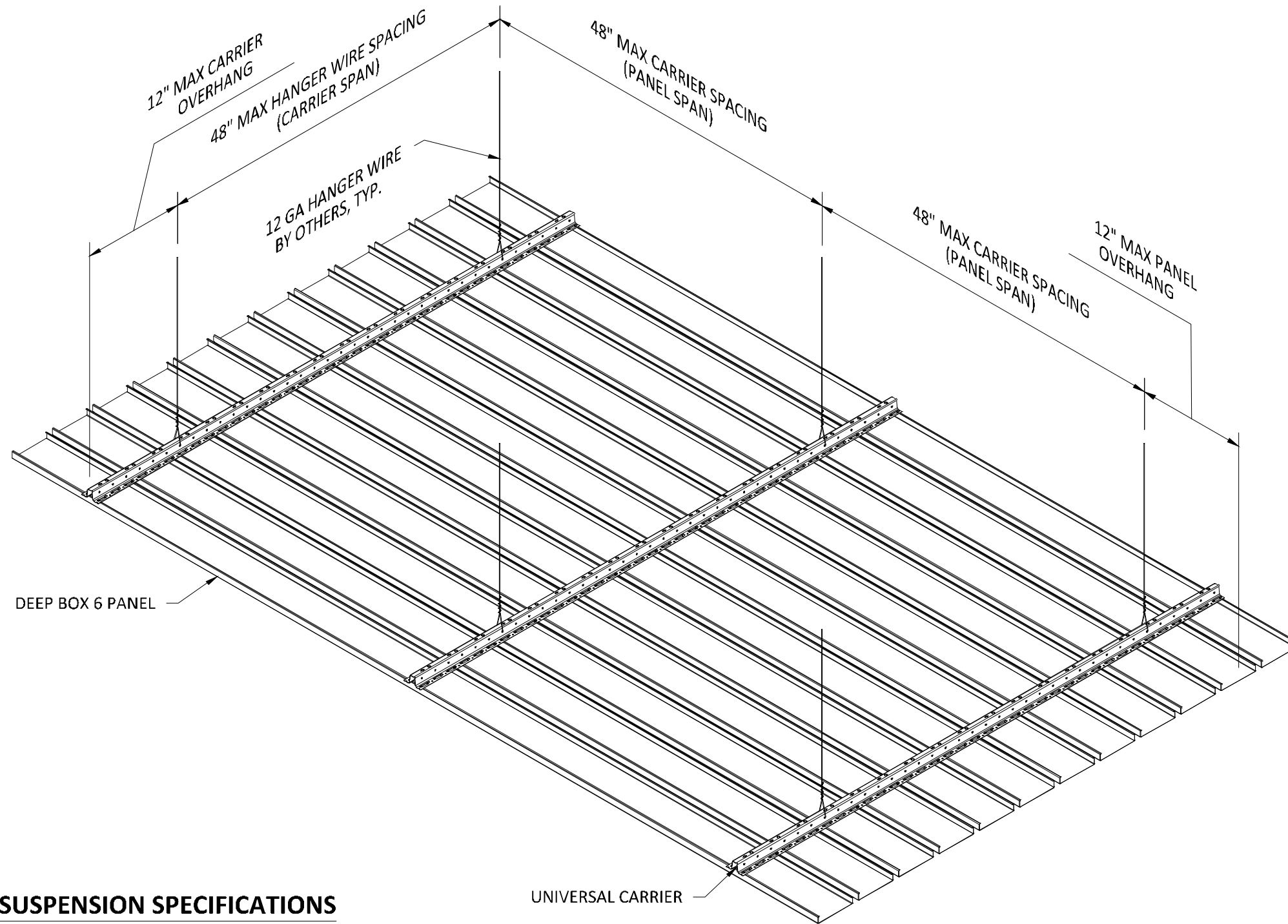
PROJECT: LINEAR DEEP BOX 6 PRODUCT SPECIFICATIONS

DRAWING NUMBER: DEEP BOX6-A1.1

SCALE: AS SHOWN

DRAWN BY: HDA ENGINEERING

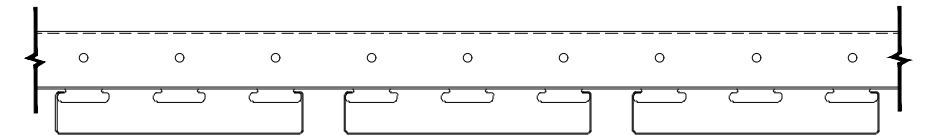
DATE: 12/5/16



### SUSPENSION SPECIFICATIONS

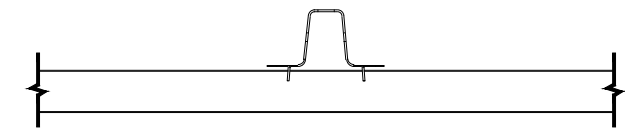
SCALE: NOT TO SCALE

### INTERIOR INSTALLATION



### SIDE VIEW OF UNIVERSAL CARRIER WITH PANEL

SCALE: 3" = 1'-0"



### END VIEW OF UNIVERSAL CARRIER WITH PANEL

SCALE: 3" = 1'-0"

### UNIVERSAL CARRIER\*

**MATERIAL:** 0.040" ALUMINUM

**FINISH:** MATTE BLACK

**PART LENGTH:** 16'-0"

\*CARRIER SPLICE REQUIRED, SEE DETAIL A1.5



5015 Oakbrook Parkway, Suite 100  
Norcross, GA 30093  
T 800.366.4327  
F 770.806.0214  
HDarchitectural.com

*All rights reserved. This drawing is the property of Hunter Douglas. It may not be copied or multiplied, neither wholly nor partly. It may not be submitted for perusal to third parties.*

### SPECIFICATIONS

(unless noted otherwise)

MATERIAL: .020" | .025" | .032" | .040" ALUMINUM DEEP BOX 6 PANEL | .040"

ALUMINUM UNIVERSAL CARRIER

FINISH: PAINT | POWDER COAT | DECORATED WOOD FINISH | WOOD VENEER |

LUXACOTE

PERFORATION: NOT AVAILABLE

### CARRIER SPEC

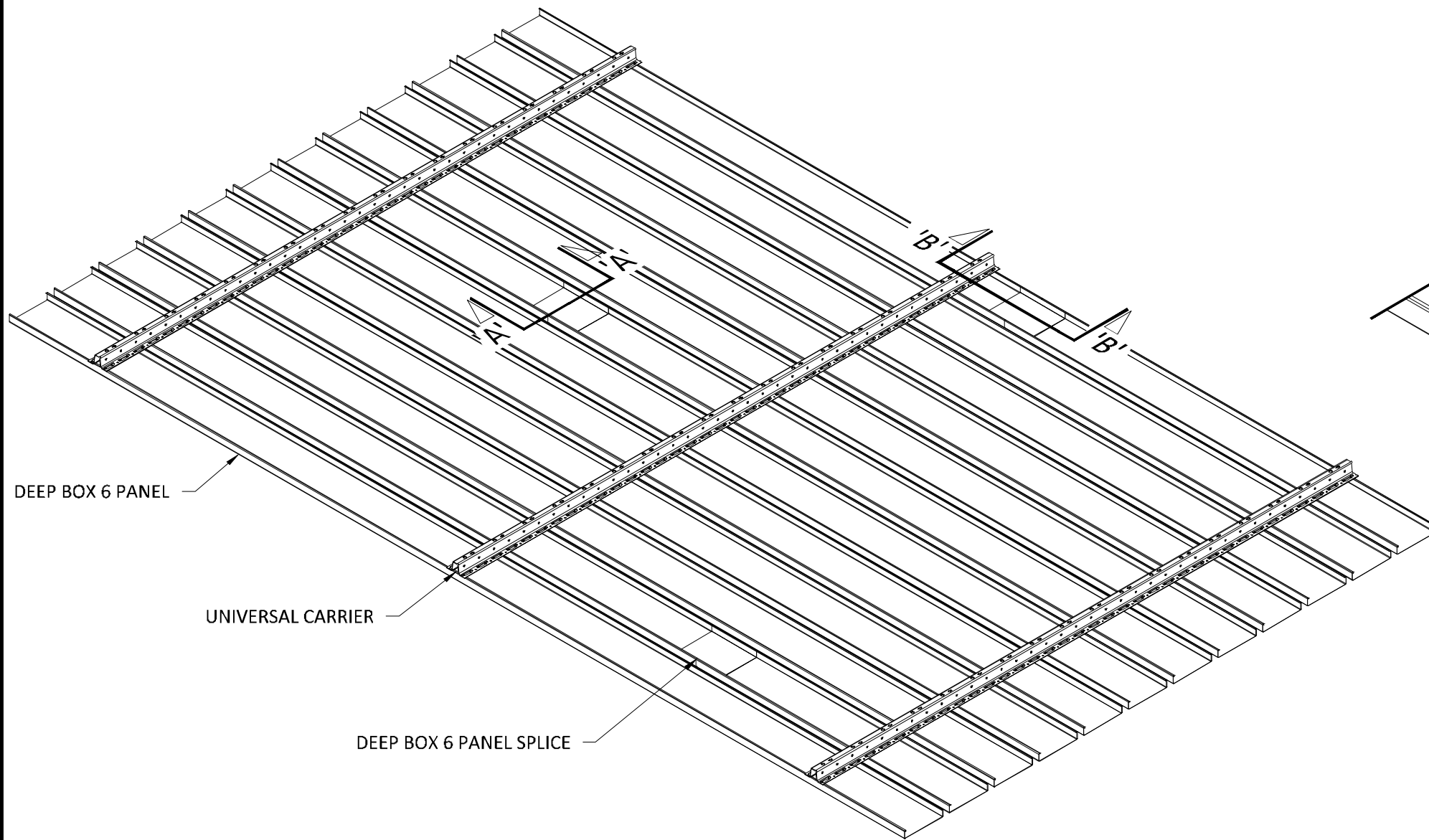
PROJECT: LINEAR DEEP BOX 6 PRODUCT SPECIFICATIONS

DRAWING NUMBER: DEEP BOX6-A1.2

SCALE: AS SHOWN

DRAWN BY: HDA ENGINEERING

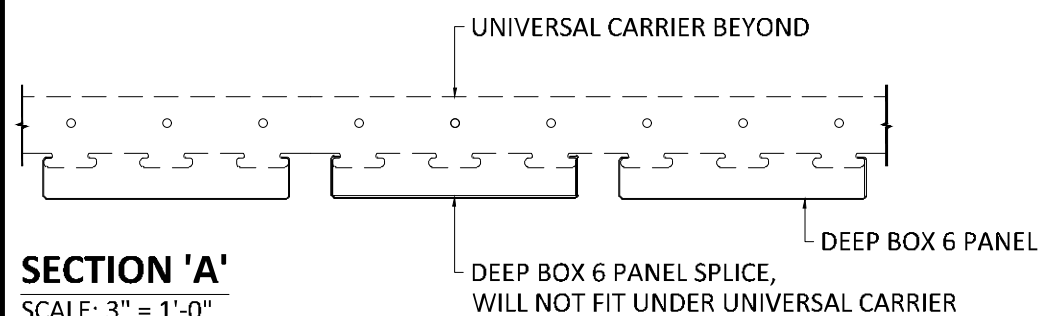
DATE: 12/5/16



DEEP BOX 6 PANEL

UNIVERSAL CARRIER

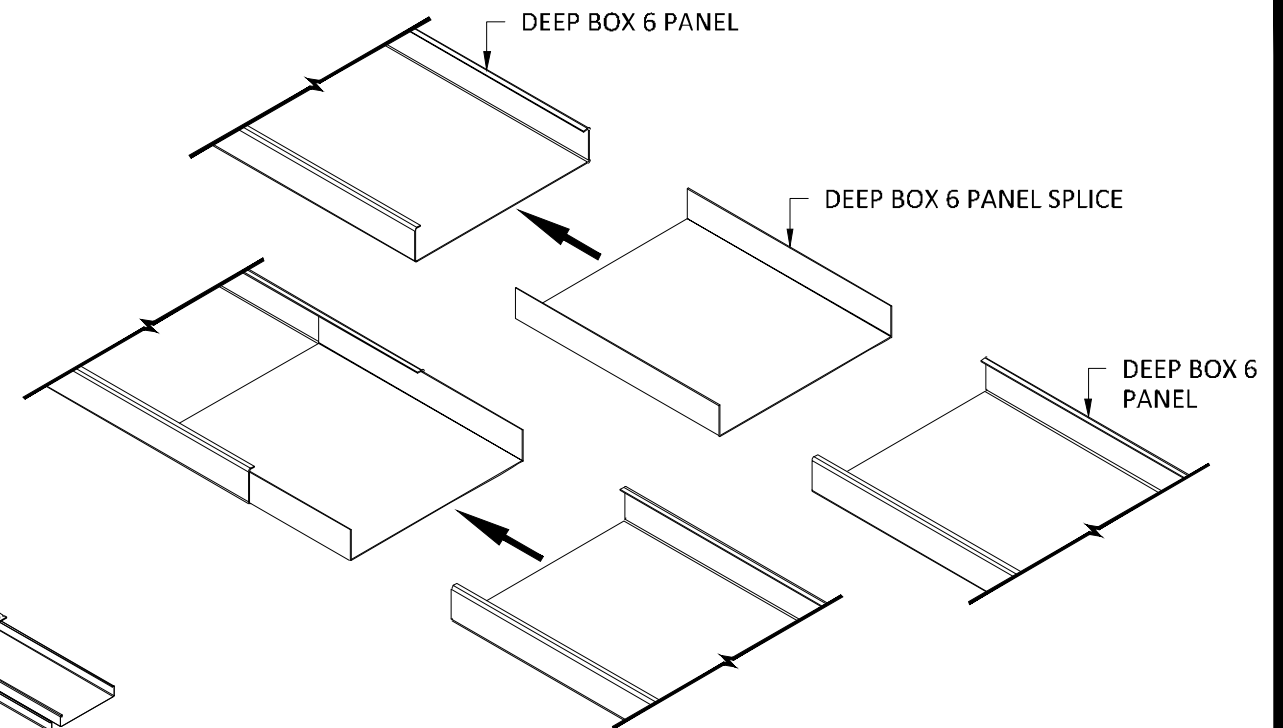
DEEP BOX 6 PANEL SPLICE



**SECTION 'A'**

SCALE: 3" = 1'-0"

## INTERIOR INSTALLATION

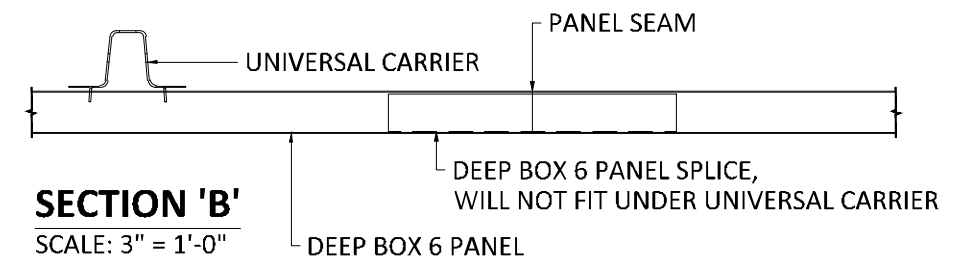


**NOTE 1:**

DO NOT SPLICE PANELS DIRECTLY BELOW UNIVERSAL CARRIERS. PANEL SPLICES DO NOT FIT UNDER CARRIERS.

**NOTE 2:**

FIELD CUT PANELS AS REQUIRED TO CREATE A RANDOM STAGGERED SEAM PATTERN. AVOID ALIGNED SEAMS.



**SECTION 'B'**

SCALE: 3" = 1'-0"

\*HANGER WIRE OMITTED FOR CLARITY



5015 Oakbrook Parkway, Suite 100  
Norcross, GA 30093  
T 800.366.4327  
F 770.806.0214  
HDarchitectural.com

*All rights reserved. This drawing is the property of Hunter Douglas. It may not be copied or multiplied, neither wholly nor partly. It may not be submitted for perusal to third parties.*

### SPECIFICATIONS

(unless noted otherwise)

MATERIAL: .020" | .025" | .032" | .040" ALUMINUM DEEP BOX 6 PANEL | .040"

ALUMINUM UNIVERSAL CARRIER

FINISH: PAINT | POWDER COAT | DECORATED WOOD FINISH | WOOD VENEER |

LUXACOTE

PERFORATION: NOT AVAILABLE

### PANEL SPLICE SPEC

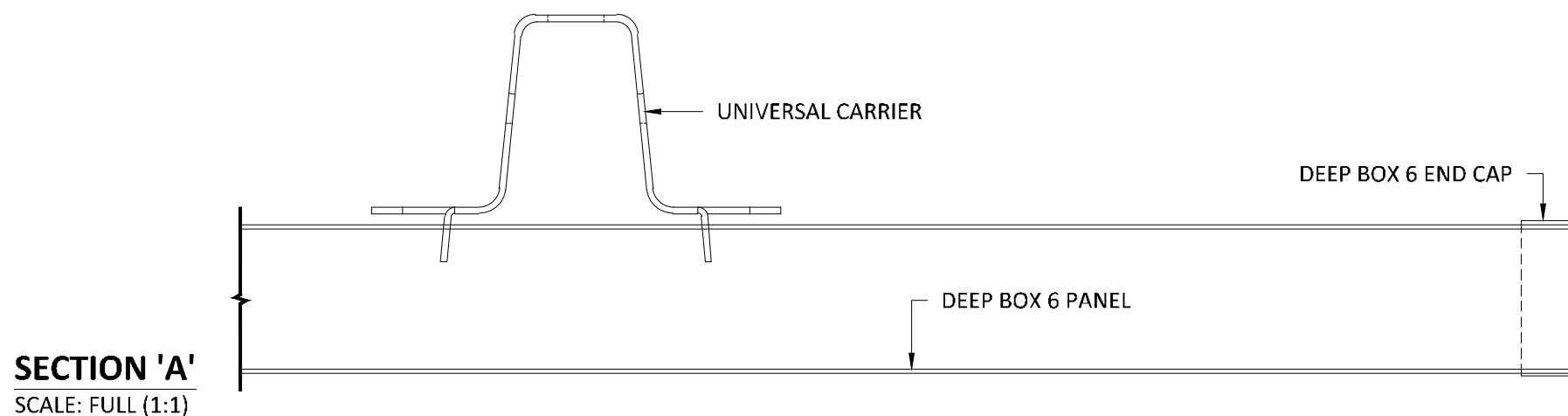
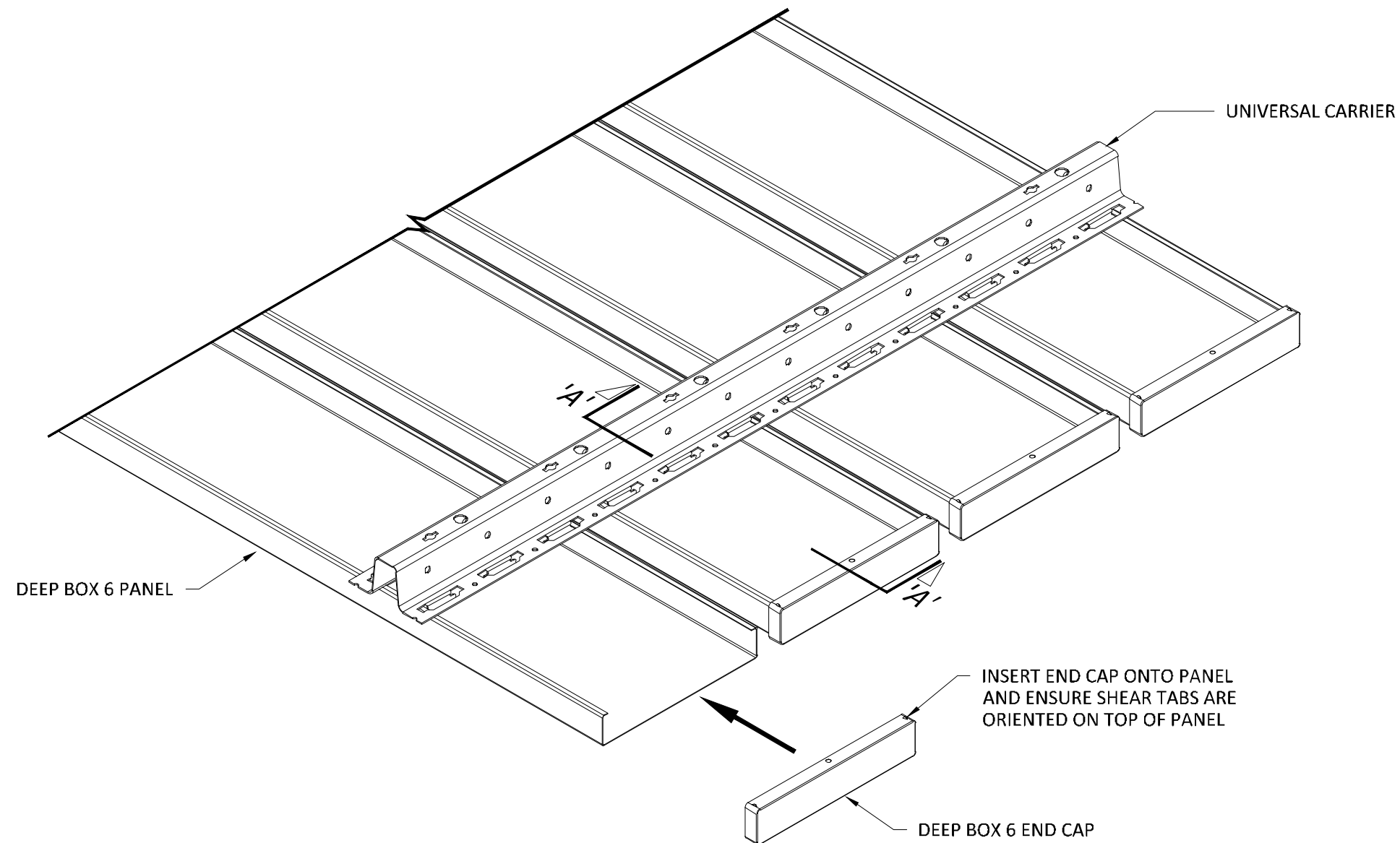
PROJECT: LINEAR DEEP BOX 6 PRODUCT SPECIFICATIONS

DRAWING NUMBER: DEEP BOX6-A1.3

SCALE: AS SHOWN

DRAWN BY: HDA ENGINEERING

DATE: 12/5/16



\*HANGER WIRE OMITTED FOR CLARITY



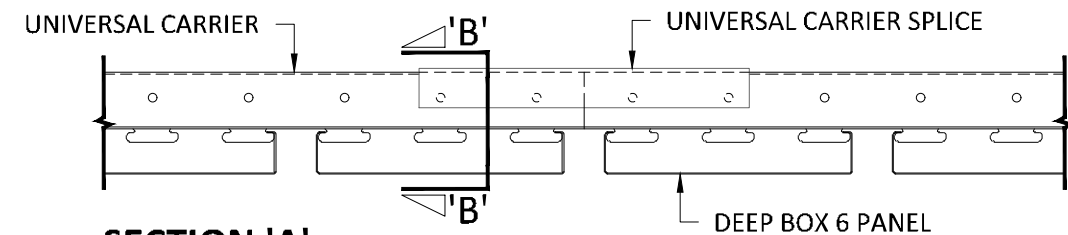
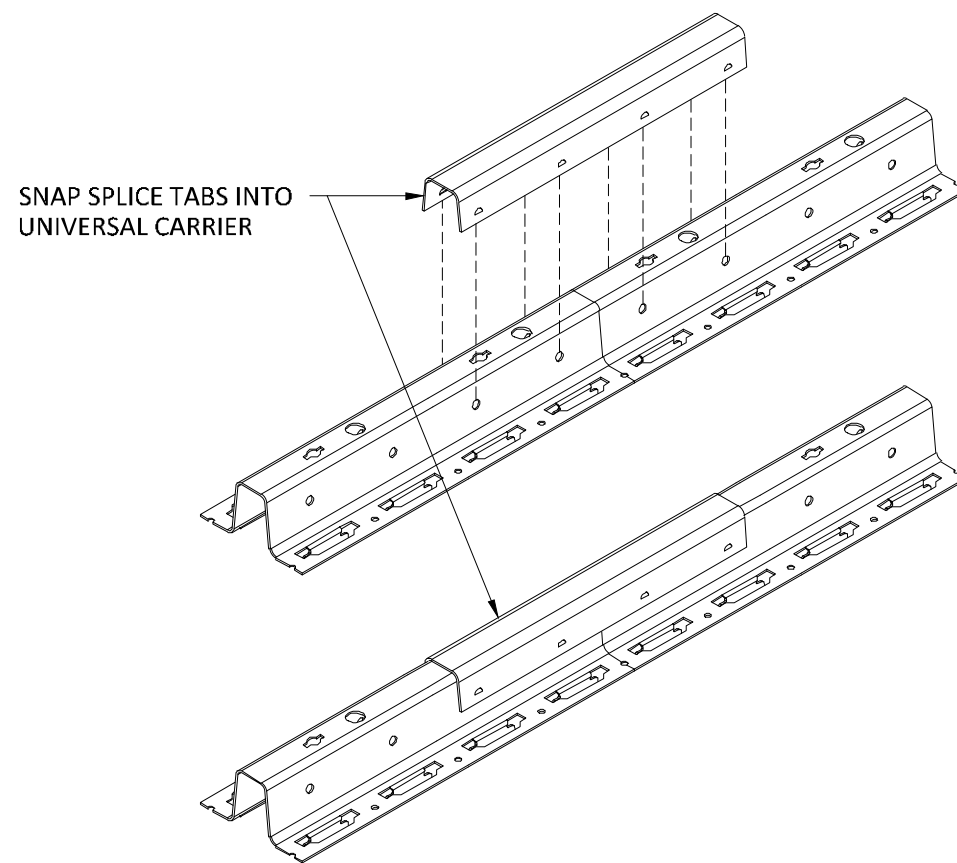
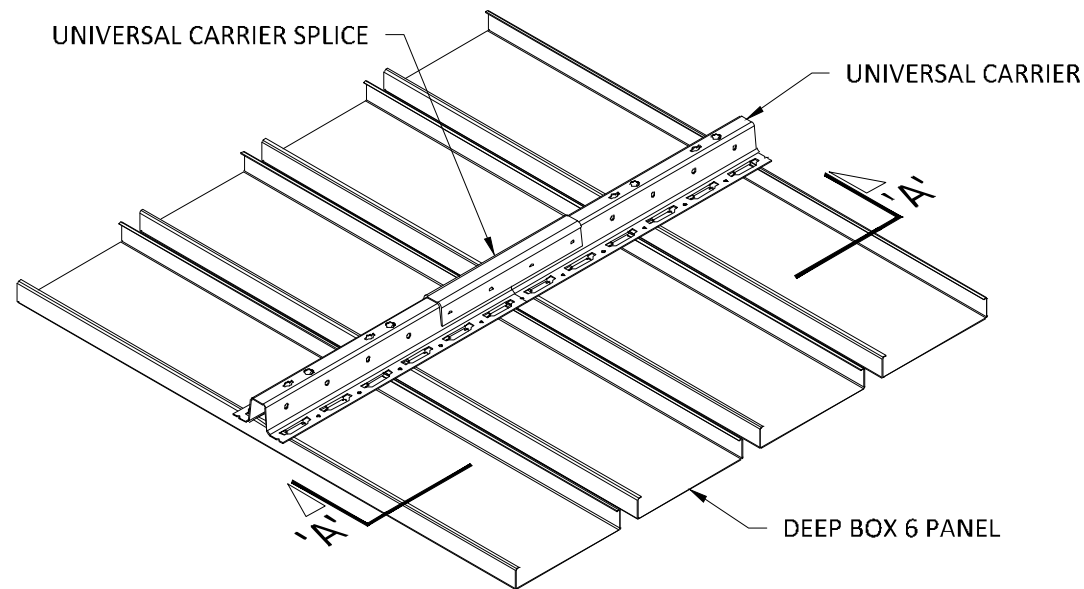
#### SPECIFICATIONS

(unless noted otherwise)

MATERIAL: .020" | .025" | .032" | .040" ALUMINUM DEEP BOX 6 PANEL | .040" ALUMINUM UNIVERSAL CARRIER  
FINISH: PAINT | POWDER COAT | DECORATED WOOD FINISH | WOOD VENEER | LUXACOTE  
PERFORATION: NOT AVAILABLE

#### PANEL ENDCAP

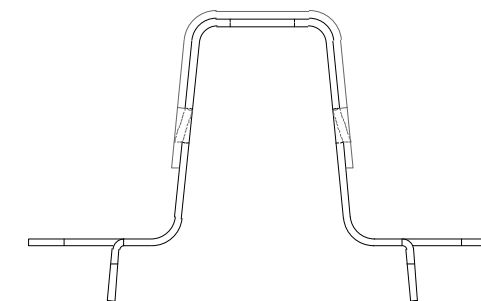
PROJECT: LINEAR DEEP BOX 6 PRODUCT SPECIFICATIONS  
DRAWING NUMBER: DEEP BOX6-A1.4  
SCALE: AS SHOWN  
DRAWN BY: HDA ENGINEERING  
DATE: 12/5/16



**SECTION 'A'**  
SCALE: 3" = 1'-0"

IF THE DESIRED CARRIER LENGTH EXCEEDS THE  
MAXIMUM OF 16'-0", USE A LUXALON CARRIER  
SPLICE TO CONNECT THE FACTORY CARRIER ENDS.

THE TABS OF THE SPLICE SNAP INTO THE HOLES IN THE  
CARRIER AND ADDITIONAL FIXING IS NOT NECESSARY.  
THE MODULE IS CONTINUED AUTOMATICALLY.



**SECTION 'B'**  
SCALE: FULL (1:1)

## INTERIOR INSTALLATION

\*HANGER WIRE OMITTED FOR CLARITY



5015 Oakbrook Parkway, Suite 100  
Norcross, GA 30093  
T 800.366.4327  
F 770.806.0214  
HDarchitectural.com

*All rights reserved. This  
drawing is the property  
of Hunter Douglas. It  
may not be copied or  
multiplied, neither  
wholly nor partly. It may  
not be submitted for  
perusal to third parties.*

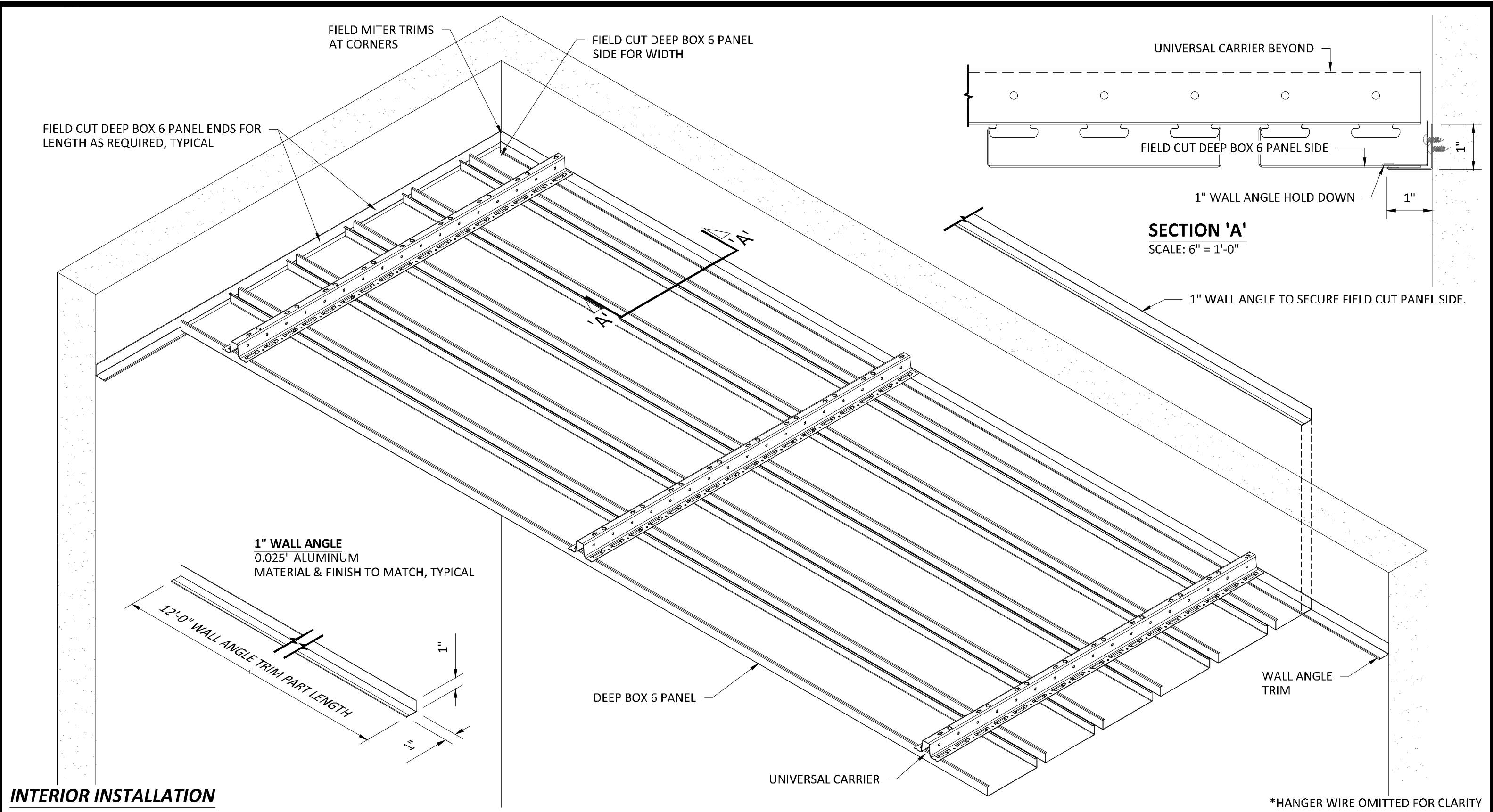
### SPECIFICATIONS

(unless noted otherwise)

MATERIAL: .020" | .025" | .032" | .040" ALUMINUM DEEP BOX 6 PANEL | .040"  
ALUMINUM UNIVERSAL CARRIER  
FINISH: PAINT | POWDER COAT | DECORATED WOOD FINISH | WOOD VENEER |  
LUXACOTE  
PERFORATION: NOT AVAILABLE

### UNIVERSAL CARRIER SPLICE

PROJECT: LINEAR DEEP BOX 6 PRODUCT SPECIFICATIONS  
DRAWING NUMBER: DEEP BOX6-A1.5  
SCALE: AS SHOWN  
DRAWN BY: HDA ENGINEERING  
DATE: 12/5/16



**INTERIOR INSTALLATION**



5015 Oakbrook Parkway, Suite 100  
Norcross, GA 30093  
T 800.366.4327  
F 770.806.0214  
HDarchitectural.com

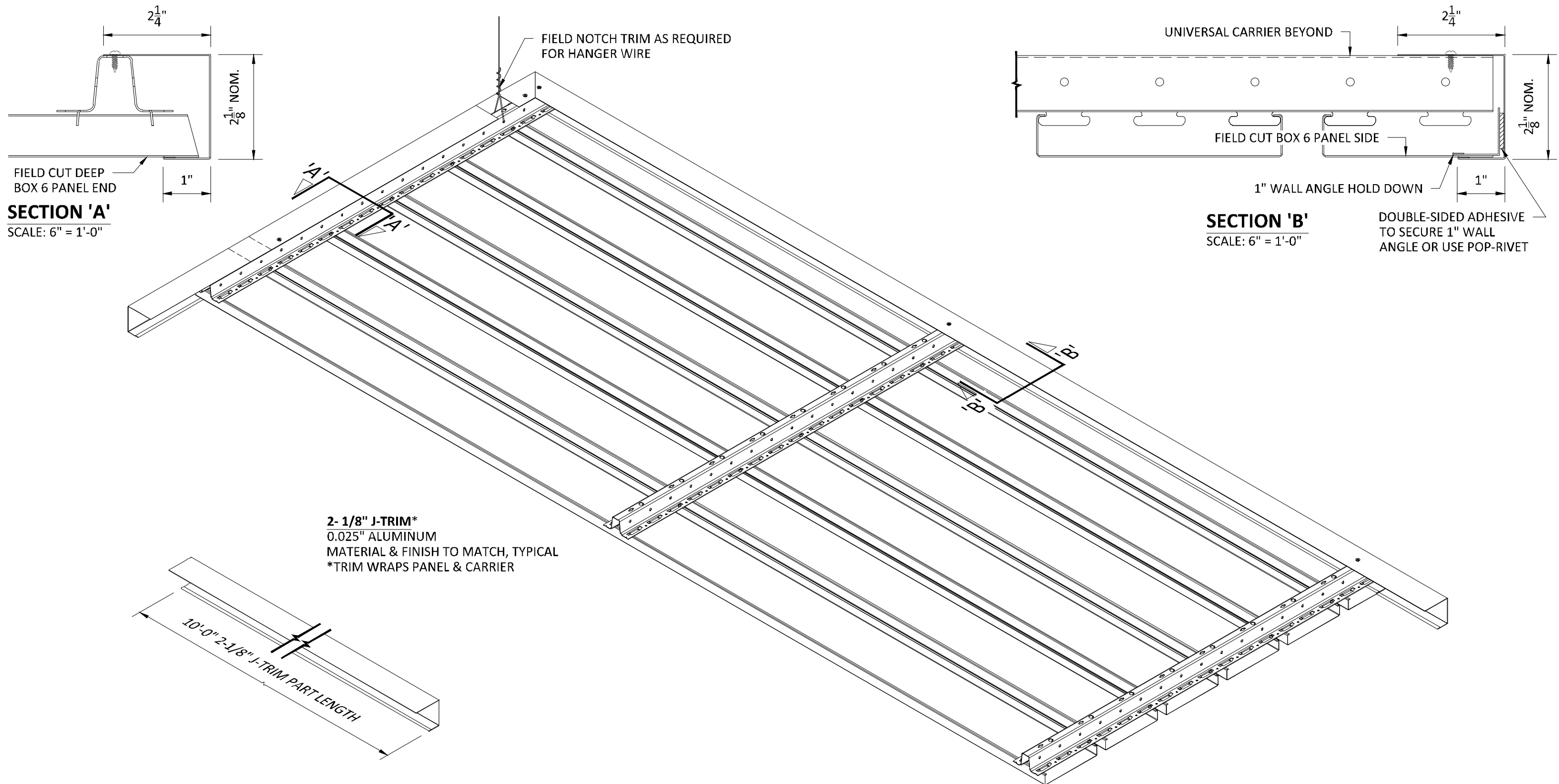
*All rights reserved. This drawing is the property of Hunter Douglas. It may not be copied or multiplied, neither wholly nor partly. It may not be submitted for perusal to third parties.*

**SPECIFICATIONS**

(unless noted otherwise)  
MATERIAL: .020" | .025" | .032" | .040" ALUMINUM DEEP BOX 6 PANEL | .040" ALUMINUM UNIVERSAL CARRIER  
FINISH: PAINT | POWDER COAT | DECORATED WOOD FINISH | WOOD VENEER | LUXACOTE  
PERFORATION: NOT AVAILABLE

**WALL ANGLE TRIM**

PROJECT: LINEAR DEEP BOX 6 PRODUCT SPECIFICATIONS  
DRAWING NUMBER: DEEP BOX6-A1.6  
SCALE: AS SHOWN  
DRAWN BY: HDA ENGINEERING  
DATE: 12/5/16



## INTERIOR INSTALLATION

\*SOME HANGER WIRE OMITTED FOR CLARITY



5015 Oakbrook Parkway, Suite 100  
Norcross, GA 30093  
T 800.366.4327  
F 770.806.0214  
HDarchitectural.com

*All rights reserved. This drawing is the property of Hunter Douglas. It may not be copied or multiplied, neither wholly nor partly. It may not be submitted for perusal to third parties.*

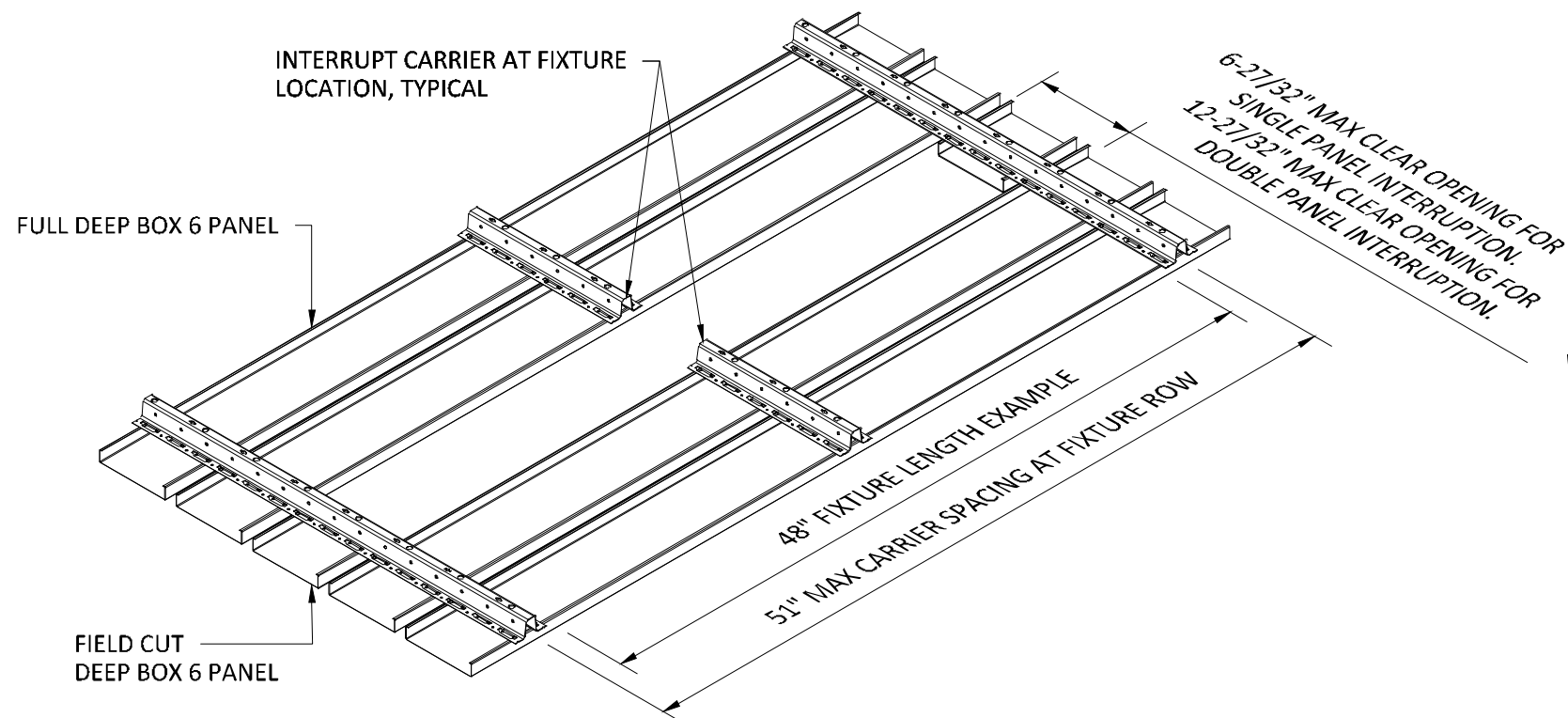
## SPECIFICATIONS

(unless noted otherwise)

MATERIAL: .020" | .025" | .032" | .040" ALUMINUM DEEP BOX 6 PANEL | .040" ALUMINUM UNIVERSAL CARRIER  
FINISH: PAINT | POWDER COAT | DECORATED WOOD FINISH | WOOD VENEER | LUXACOTE  
PERFORATION: NOT AVAILABLE

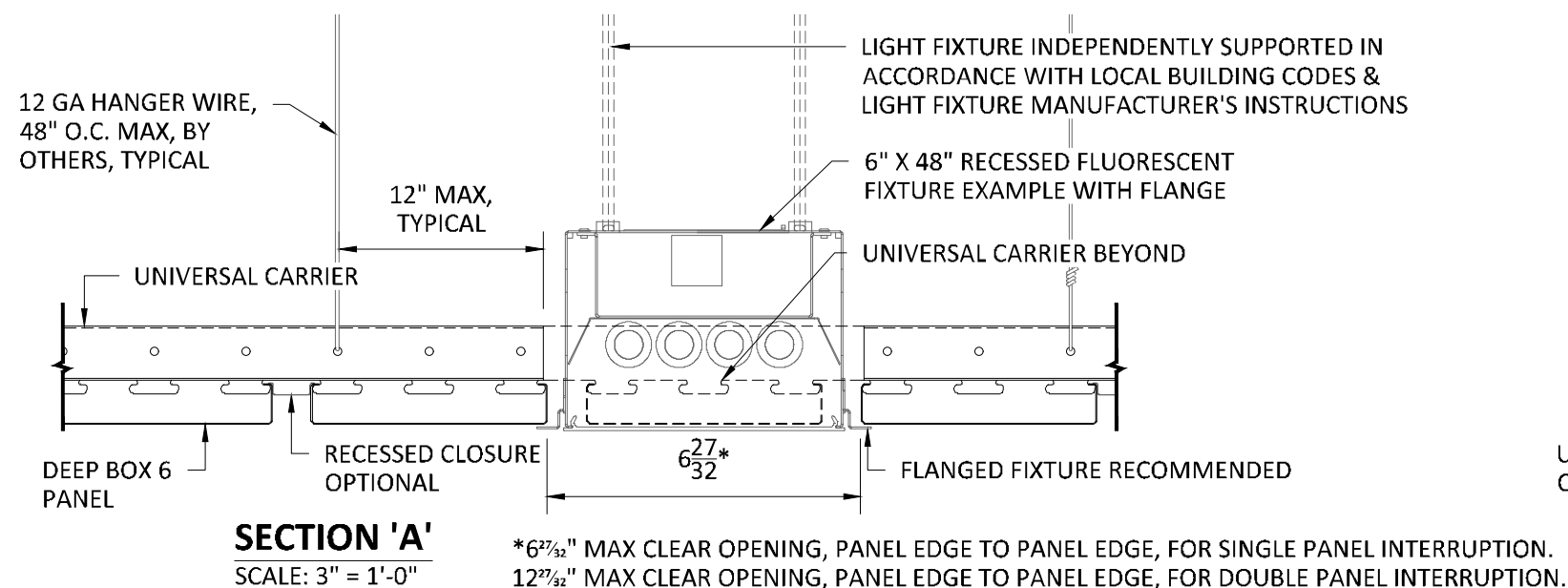
## FLOATING TRIM

PROJECT: LINEAR DEEP BOX 6 PRODUCT SPECIFICATIONS  
DRAWING NUMBER: DEEP BOX6-A1.7  
SCALE: AS SHOWN  
DRAWN BY: HDA ENGINEERING  
DATE: 12/5/16



### TYPICAL ISOMETRIC

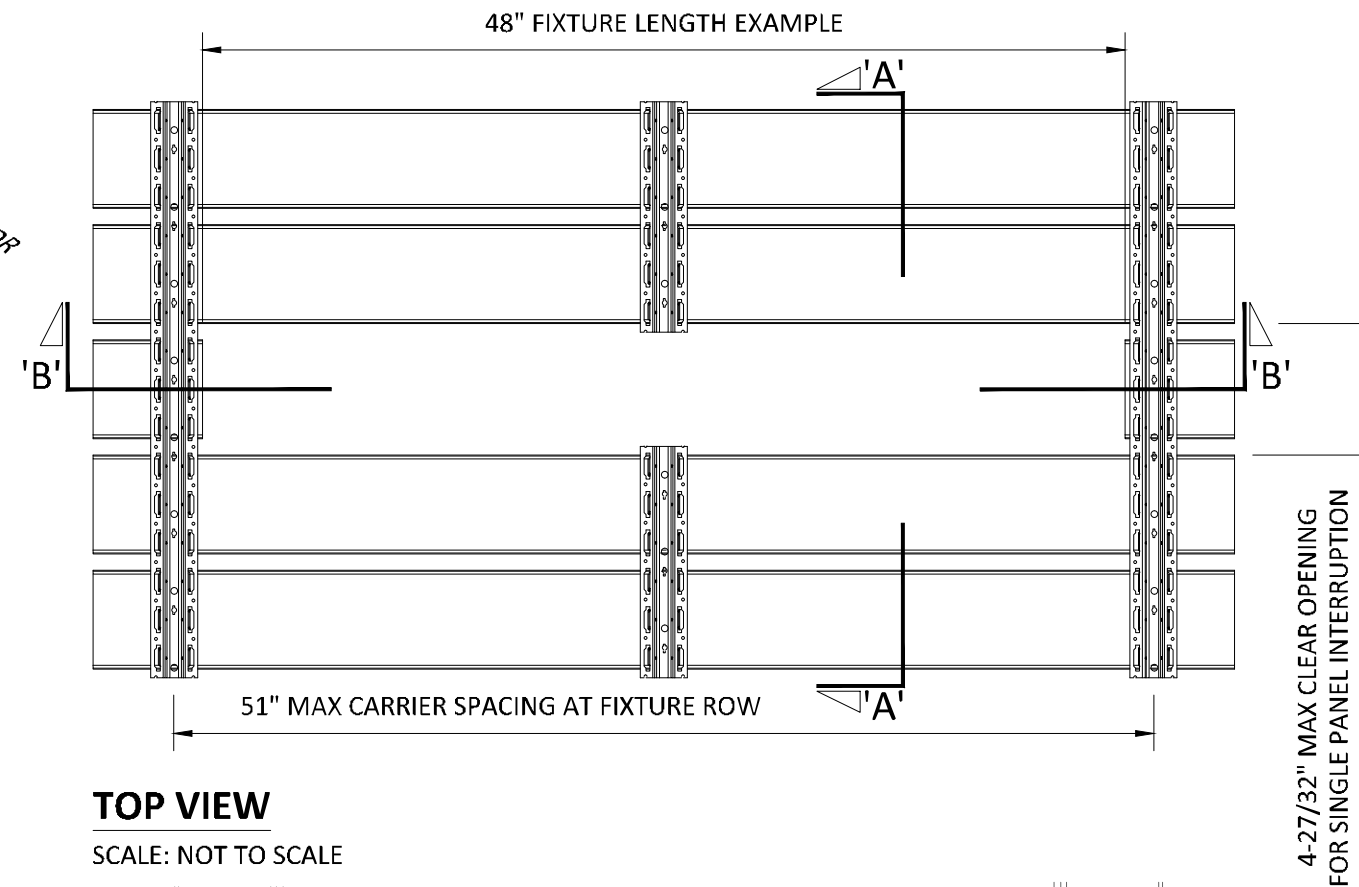
SCALE: NOT TO SCALE



### SECTION 'A'

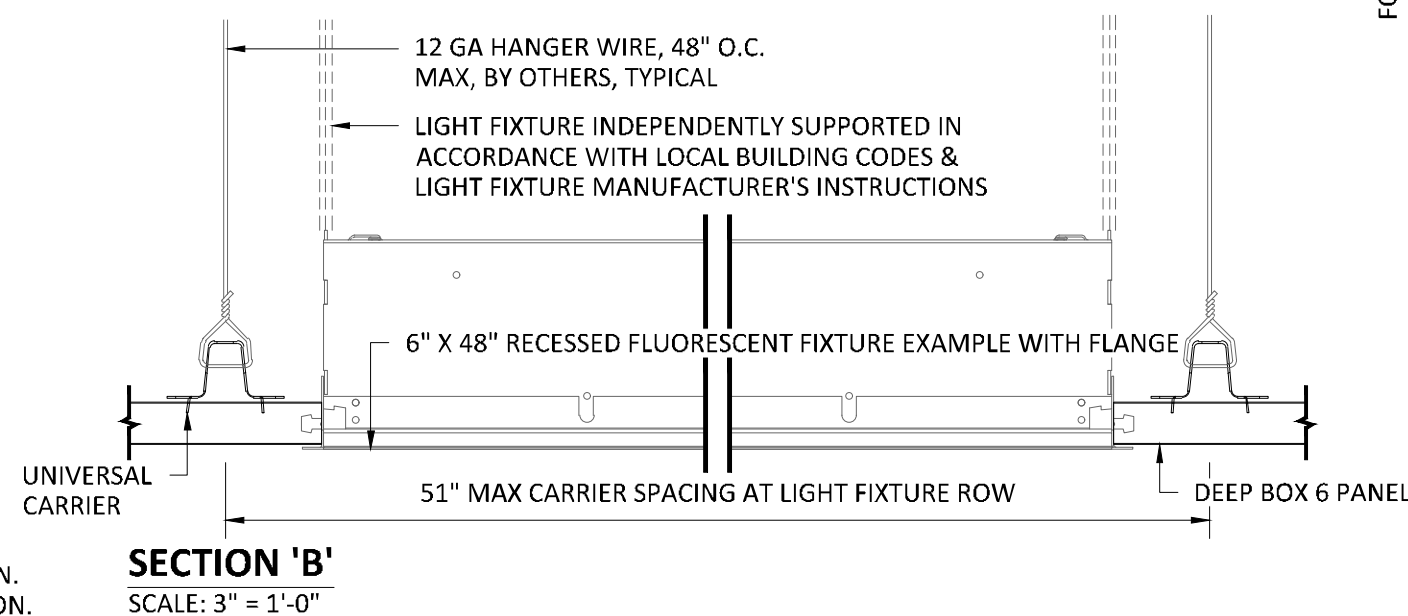
SCALE: 3" = 1'-0"

\* $6\frac{27}{32}$ " MAX CLEAR OPENING, PANEL EDGE TO PANEL EDGE, FOR SINGLE PANEL INTERRUPTION.  
 $12\frac{27}{32}$ " MAX CLEAR OPENING, PANEL EDGE TO PANEL EDGE, FOR DOUBLE PANEL INTERRUPTION.



### TOP VIEW

SCALE: NOT TO SCALE



### SECTION 'B'

SCALE: 3" = 1'-0"

NOTE: FIXTURE WITH TRIM FLANGE NOT BY HUNTER DOUGLAS

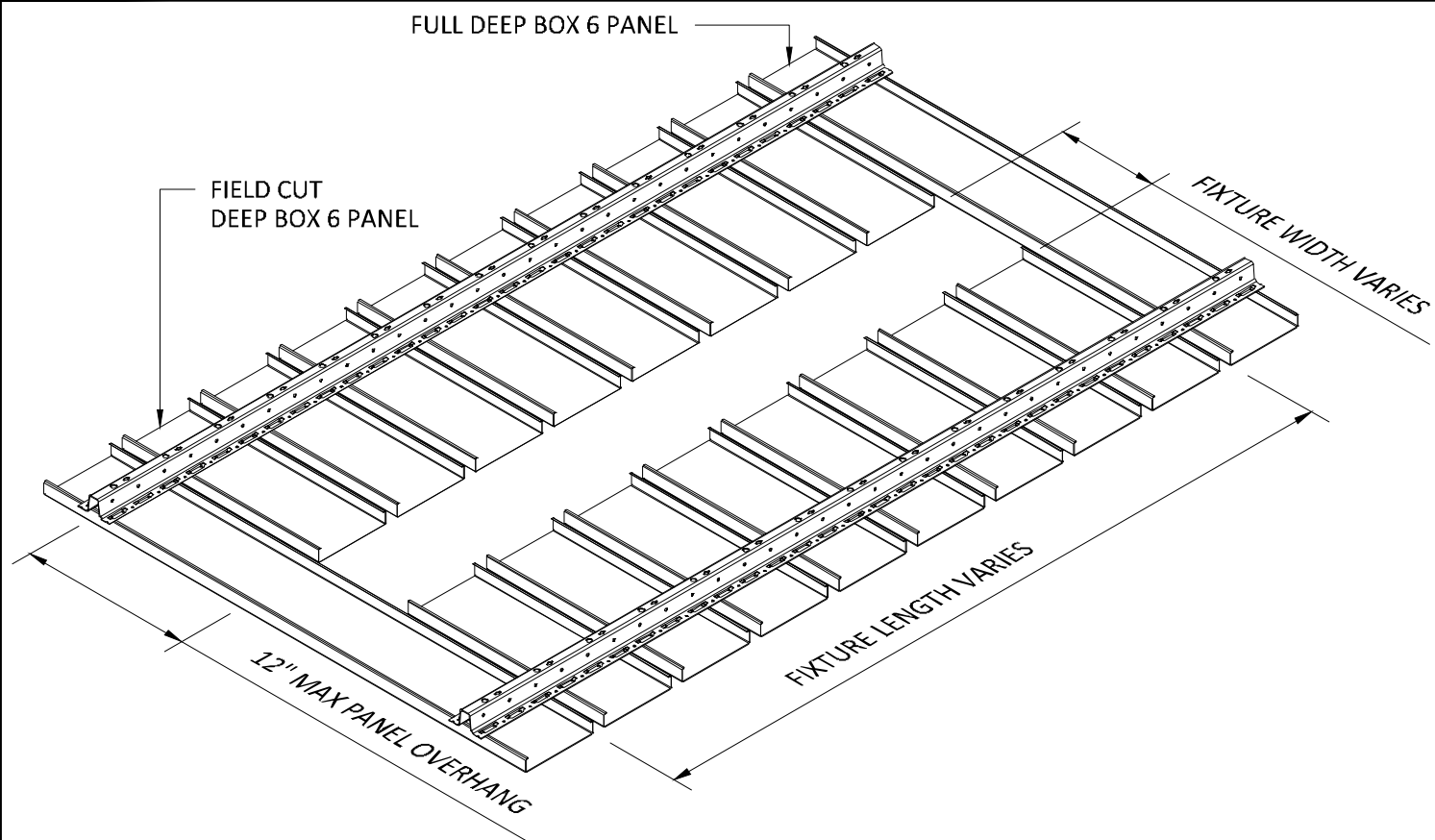
### SPECIFICATIONS

(unless noted otherwise)

MATERIAL: .020" | .025" | .032" | .040" ALUMINUM DEEP BOX 6 PANEL | .040" ALUMINUM UNIVERSAL CARRIER  
 FINISH: PAINT | POWDER COAT | DECORATED WOOD FINISH | WOOD VENEER | LUXACOTE  
 PERFORATION: NOT AVAILABLE

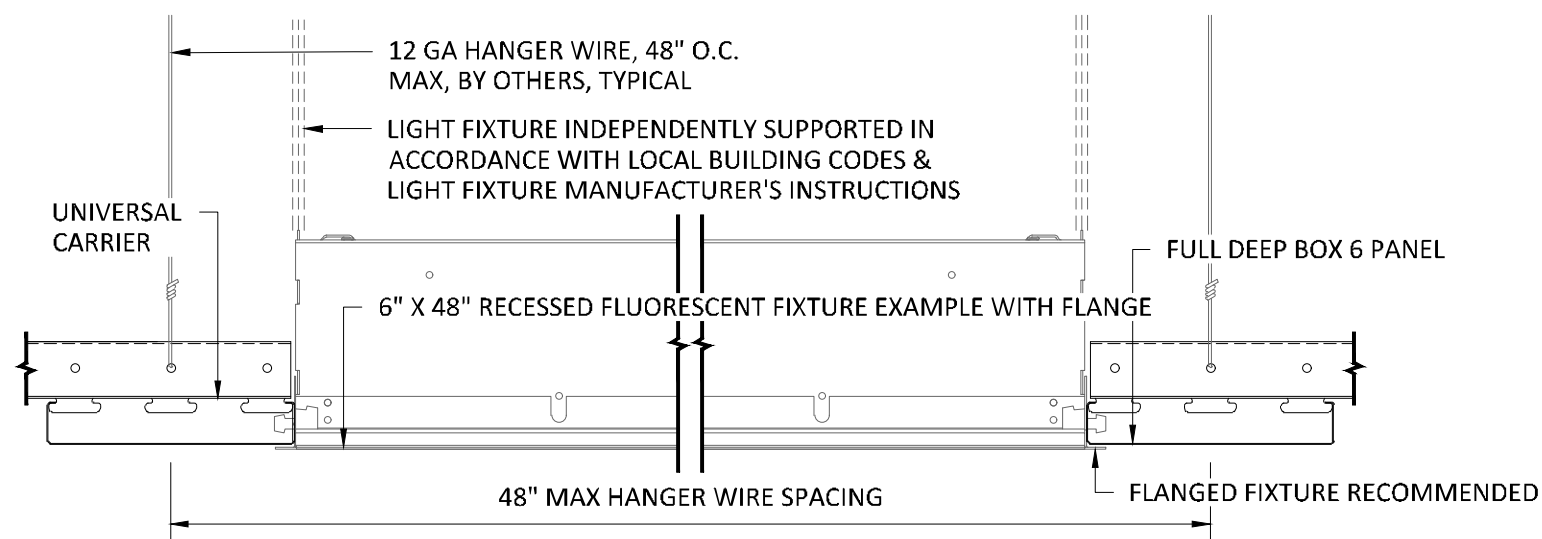
### INTERRUPTED PANEL FOR TYPICAL FIXTURE

PROJECT: LINEAR DEEP BOX 6 PRODUCT SPECIFICATIONS  
 DRAWING NUMBER: DEEP BOX6-A1.8  
 SCALE: AS SHOWN  
 DRAWN BY: HDA ENGINEERING  
 DATE: 12/5/16



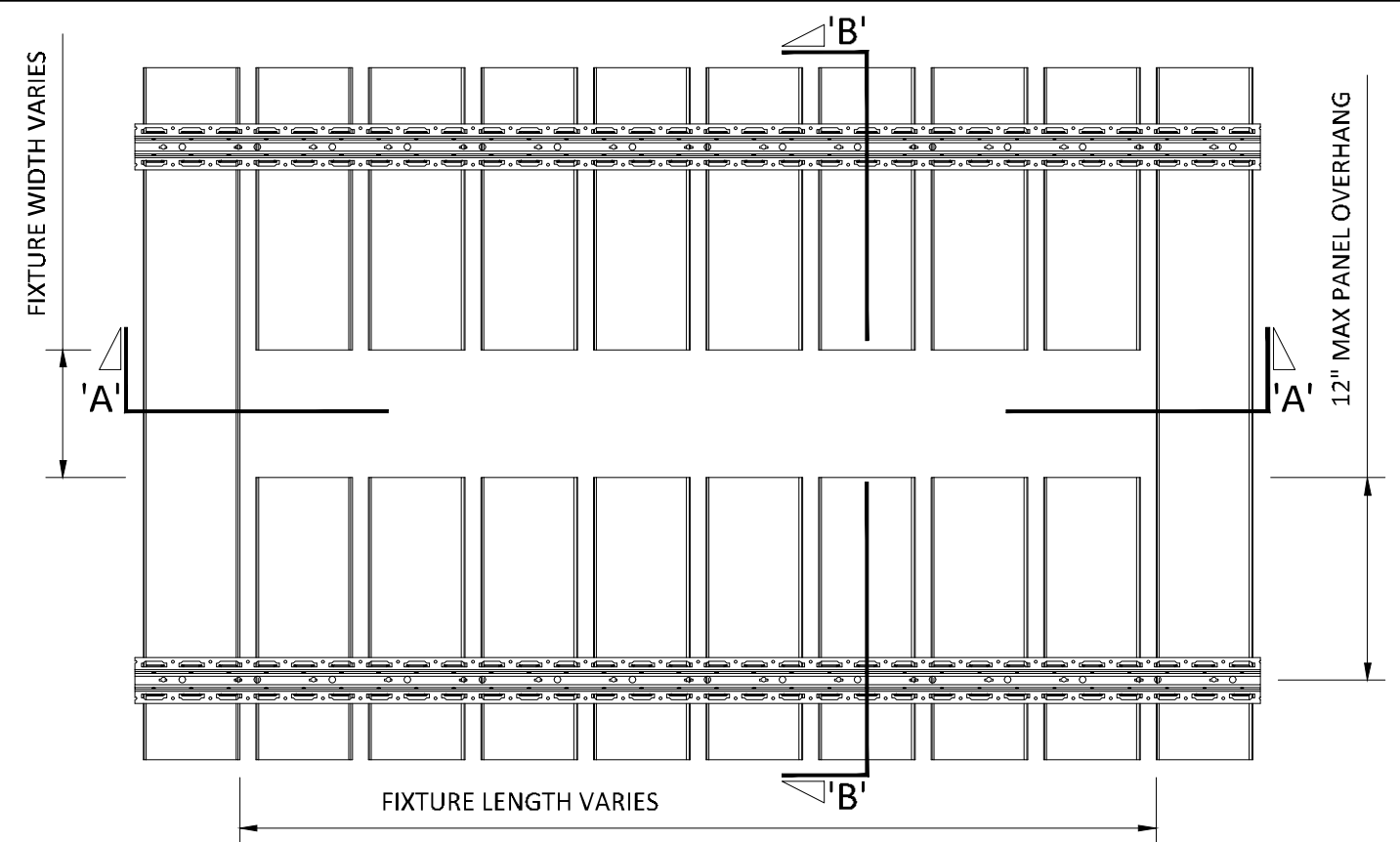
### TYPICAL ISOMETRIC

SCALE: NOT TO SCALE



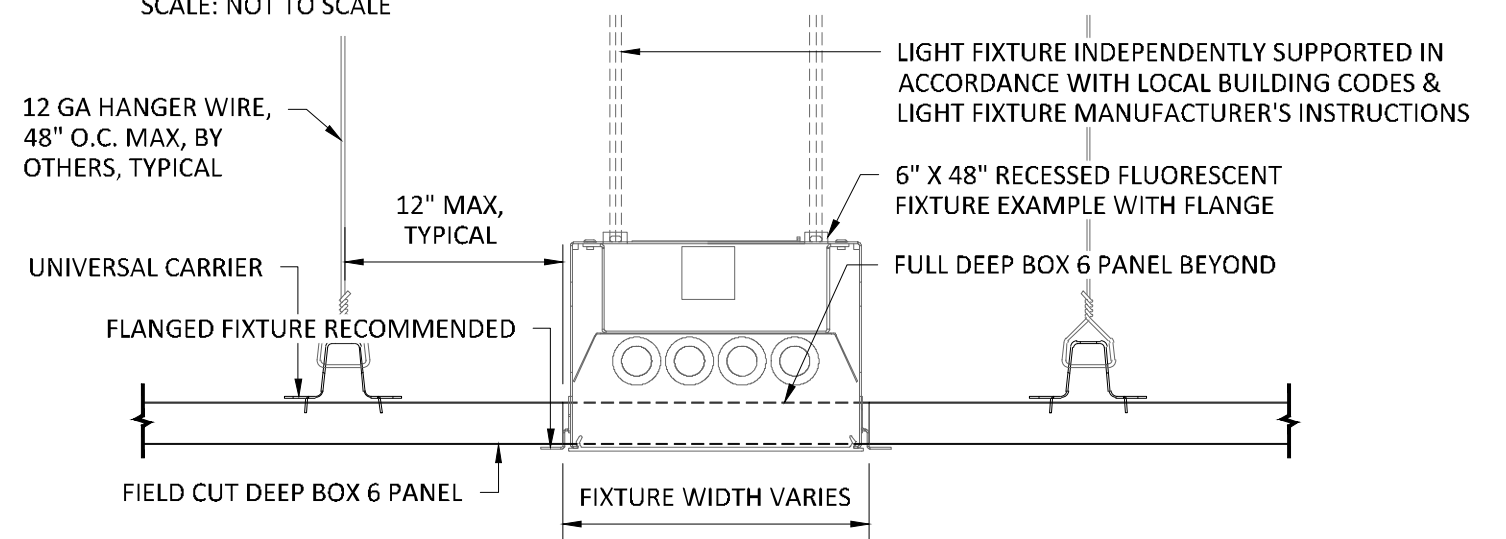
### SECTION 'A'

SCALE: 3" = 1'-0"



### TOP VIEW

SCALE: NOT TO SCALE



### SECTION 'B'

SCALE: 3" = 1'-0"

NOTE: FIXTURE WITH TRIM FLANGE NOT BY HUNTER DOUGLAS

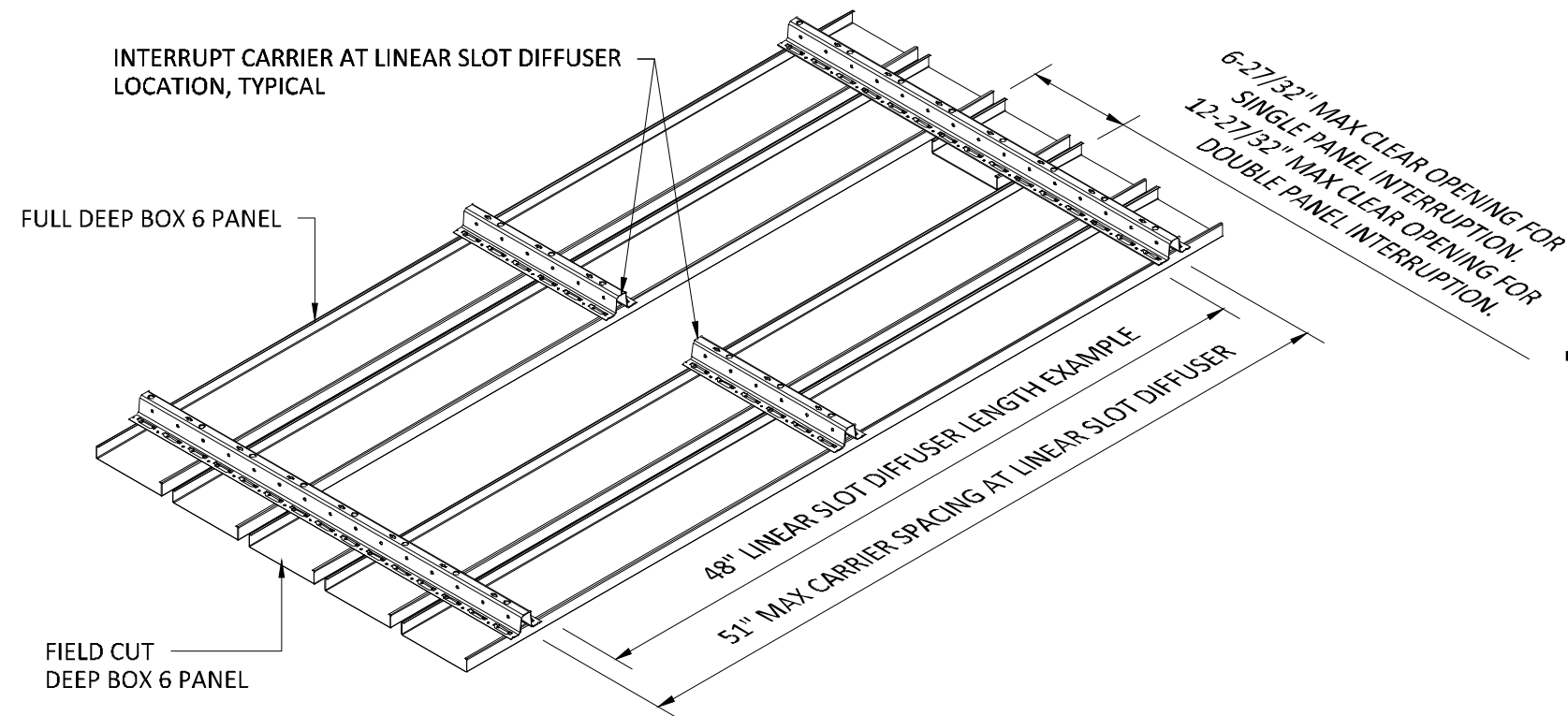
### SPECIFICATIONS

(unless noted otherwise)

MATERIAL: .020" | .025" | .032" | .040" ALUMINUM DEEP BOX 6 PANEL | .040"  
ALUMINUM UNIVERSAL CARRIER  
FINISH: PAINT | POWDER COAT | DECORATED WOOD FINISH | WOOD VENEER |  
LUXACOTE  
PERFORATION: NOT AVAILABLE

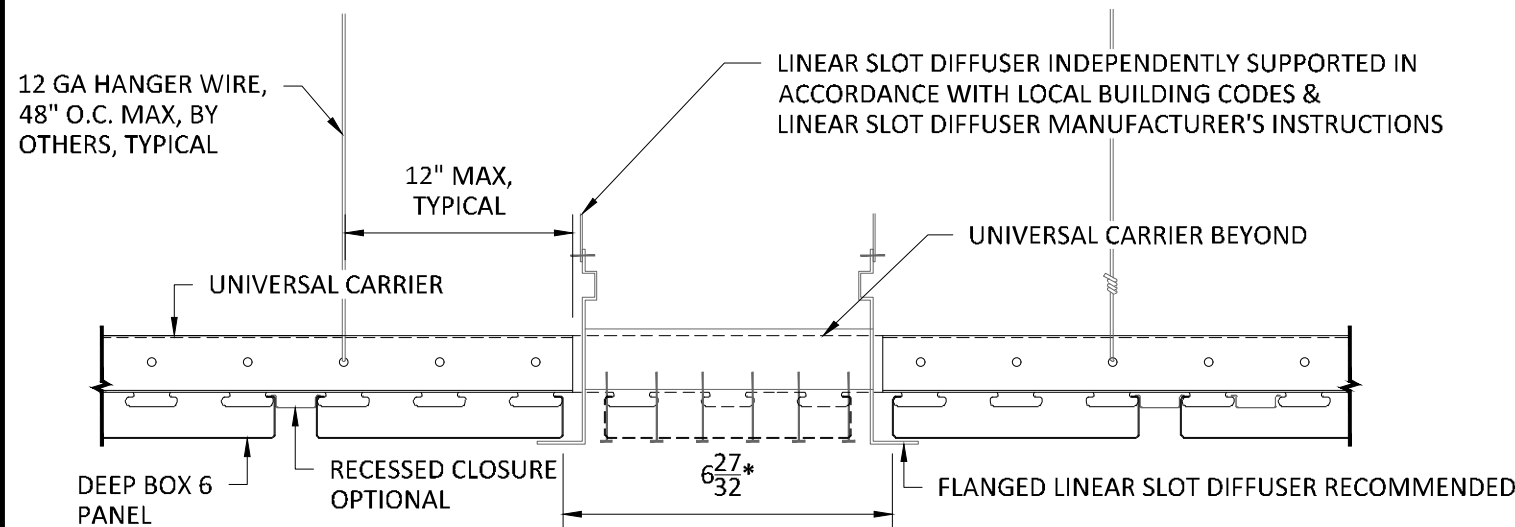
### FIELD CUT PANEL FOR TYPICAL FIXTURE

PROJECT: LINEAR DEEP BOX 6 PRODUCT SPECIFICATIONS  
DRAWING NUMBER: DEEP BOX6-A1.9  
SCALE: AS SHOWN  
DRAWN BY: HDA ENGINEERING  
DATE: 12/5/16



### TYPICAL ISOMETRIC

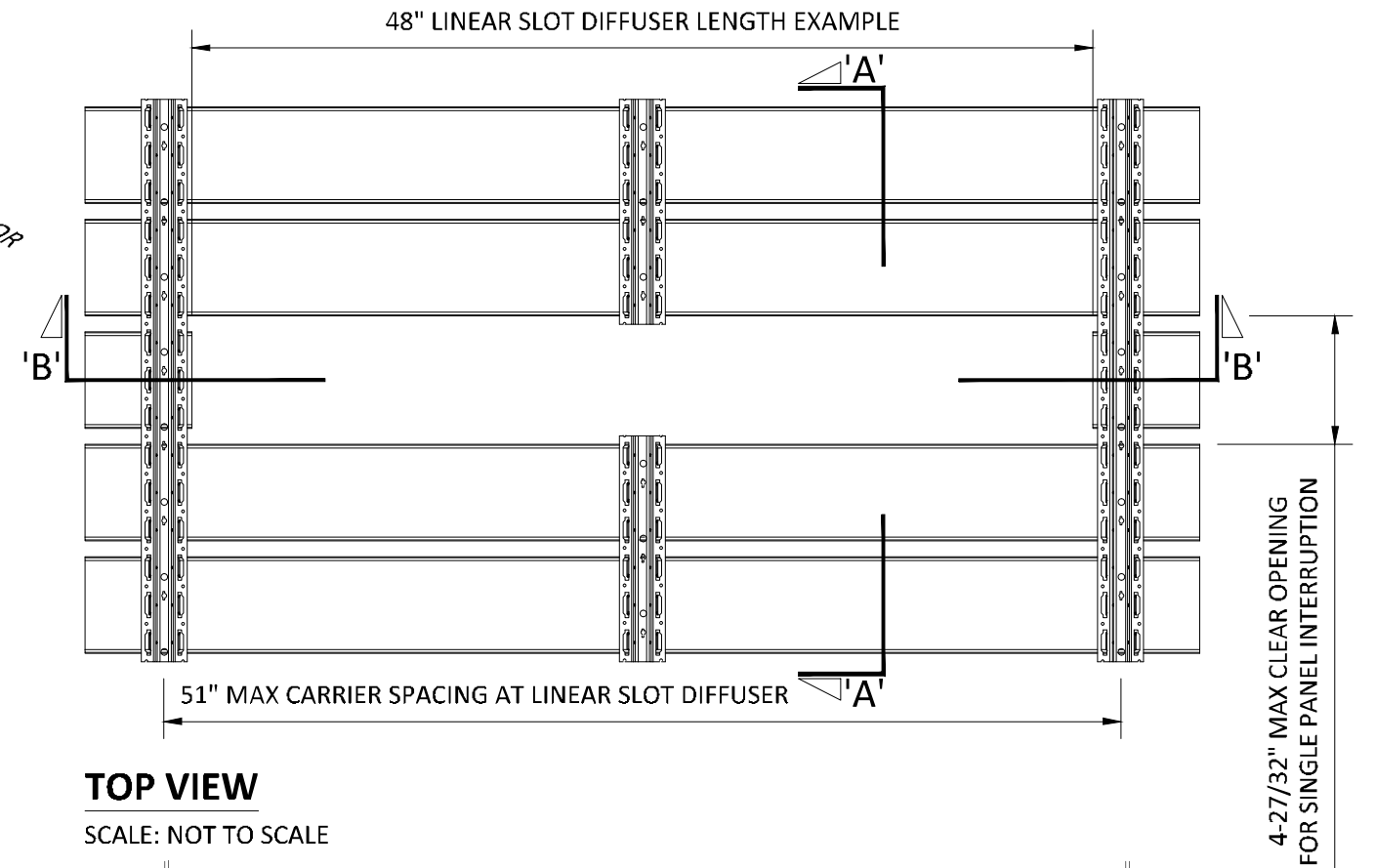
SCALE: NOT TO SCALE



### SECTION 'A'

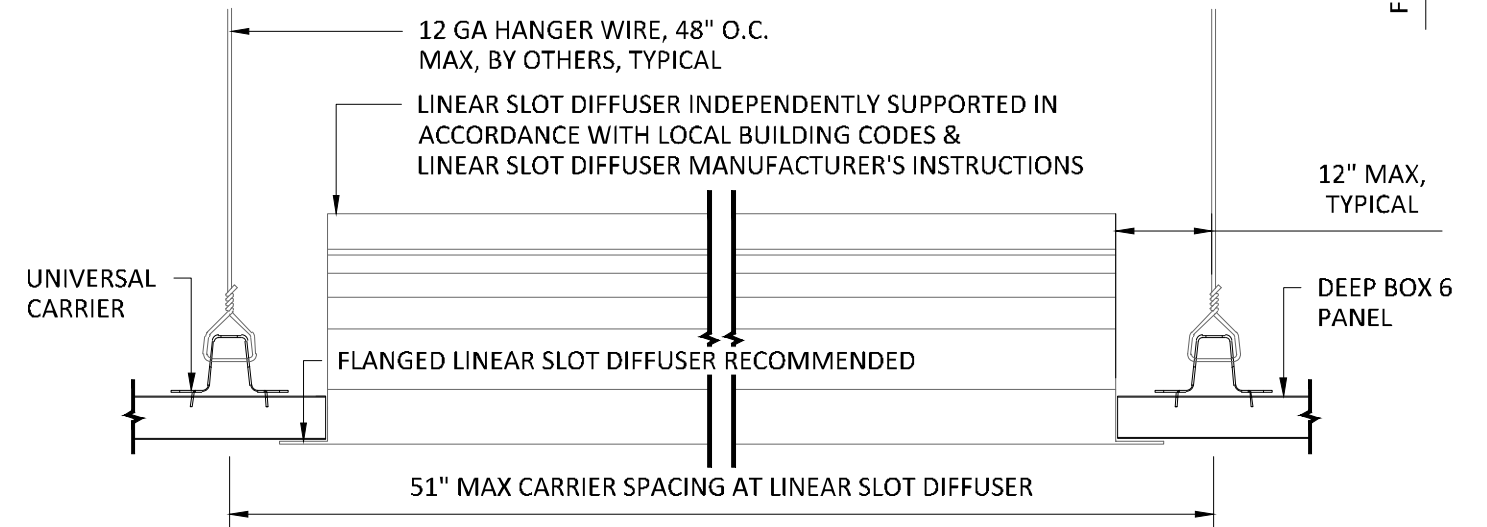
SCALE: 3" = 1'-0"

\*6-27/32" MAX CLEAR OPENING, PANEL EDGE TO PANEL EDGE, FOR SINGLE PANEL INTERRUPTION.  
12-27/32" MAX CLEAR OPENING, PANEL EDGE TO PANEL EDGE, FOR DOUBLE PANEL INTERRUPTION.



### TOP VIEW

SCALE: NOT TO SCALE



### SECTION 'B'

SCALE: 3" = 1'-0"

NOTE: DIFFUSER WITH TRIM FLANGE NOT BY HUNTER DOUGLAS

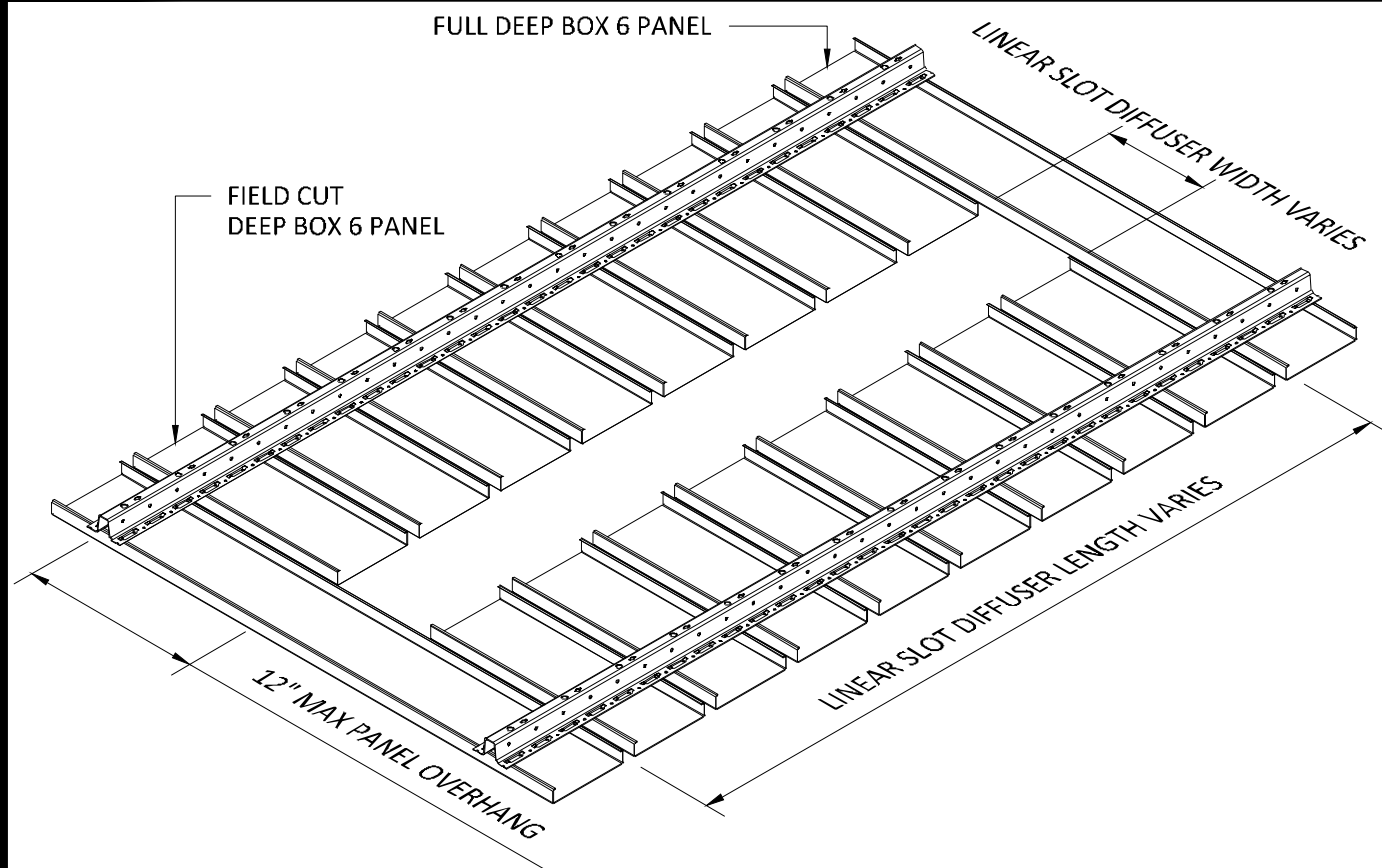
### SPECIFICATIONS

(unless noted otherwise)

MATERIAL: .020" | .025" | .032" | .040" ALUMINUM DEEP BOX 6 PANEL | .040" ALUMINUM UNIVERSAL CARRIER  
FINISH: PAINT | POWDER COAT | DECORATED WOOD FINISH | WOOD VENEER | LUXACOTE  
PERFORATION: NOT AVAILABLE

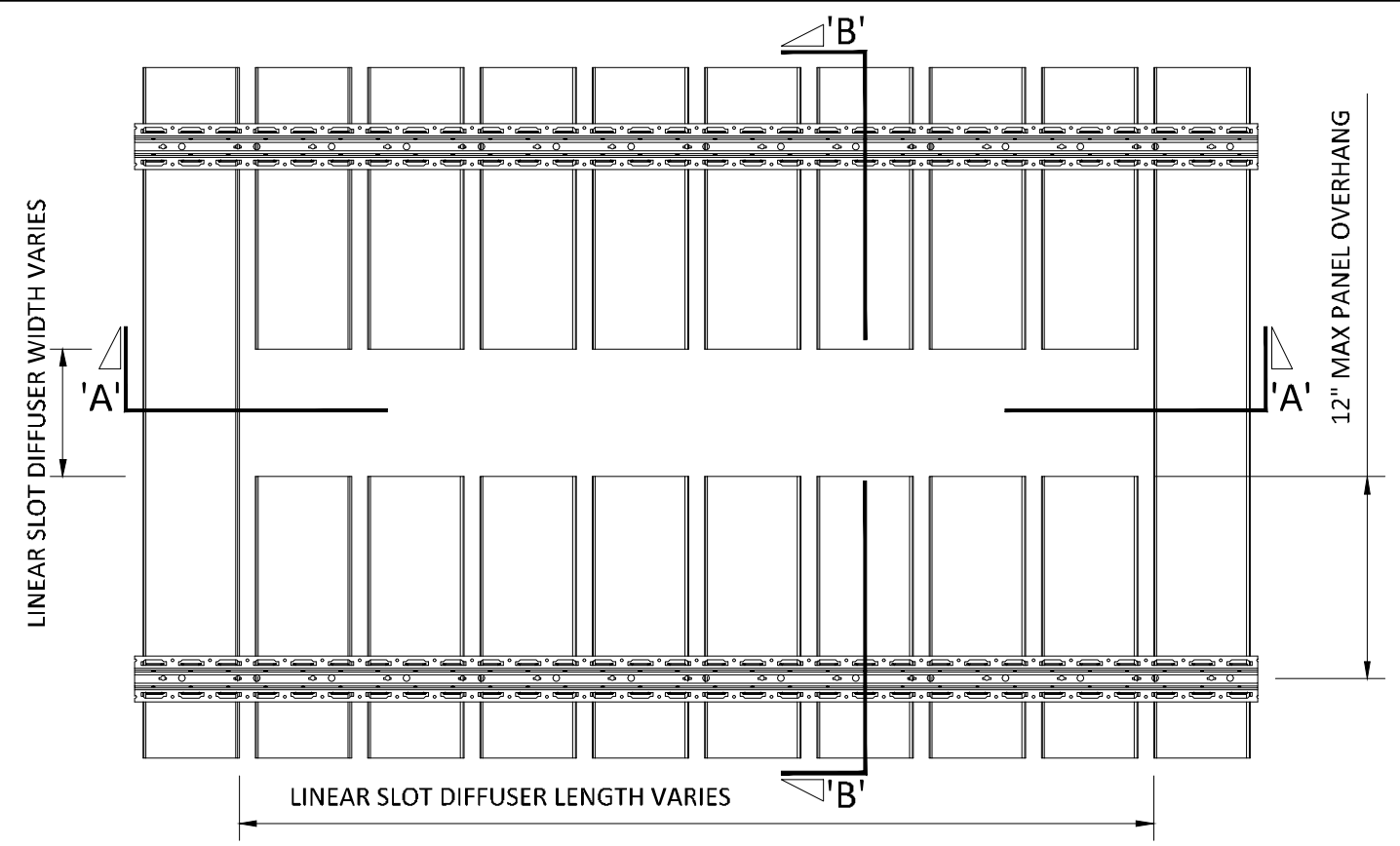
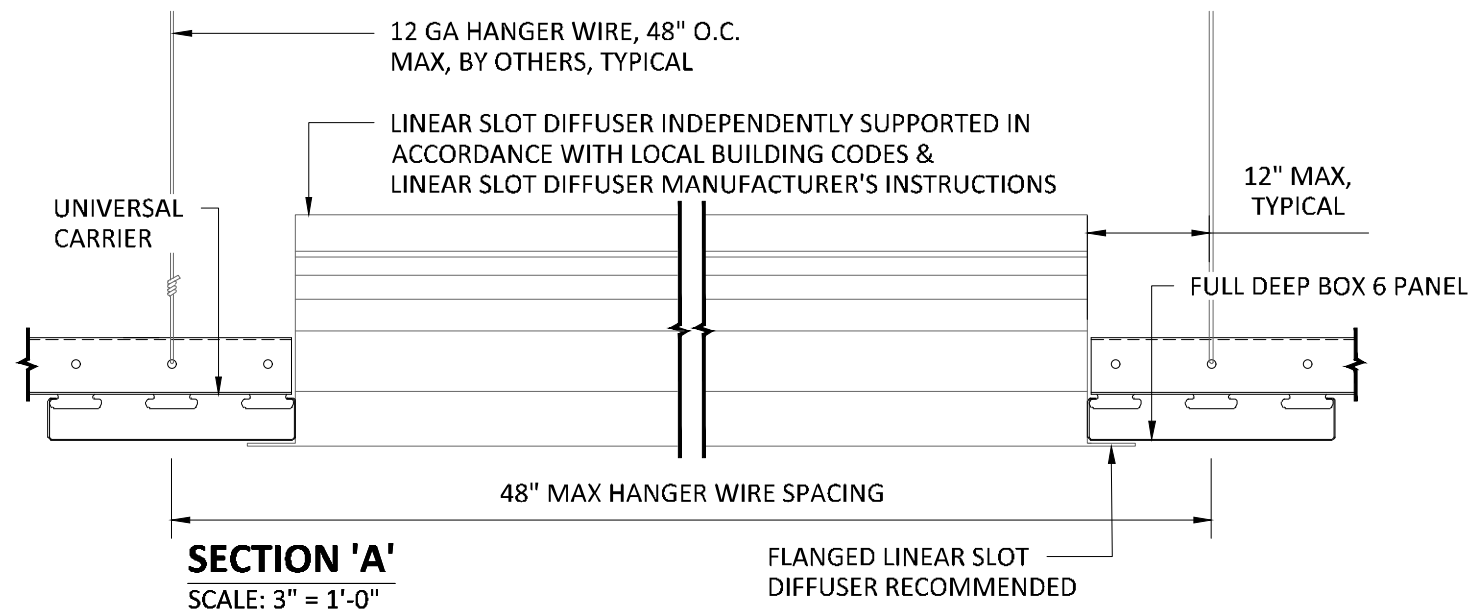
### INTERRUPTED PANEL FOR TYPICAL DIFFUSER

PROJECT: LINEAR DEEP BOX 6 PRODUCT SPECIFICATIONS  
DRAWING NUMBER: DEEP BOX6-A1.10  
SCALE: AS SHOWN  
DRAWN BY: HDA ENGINEERING  
DATE: 12/5/16



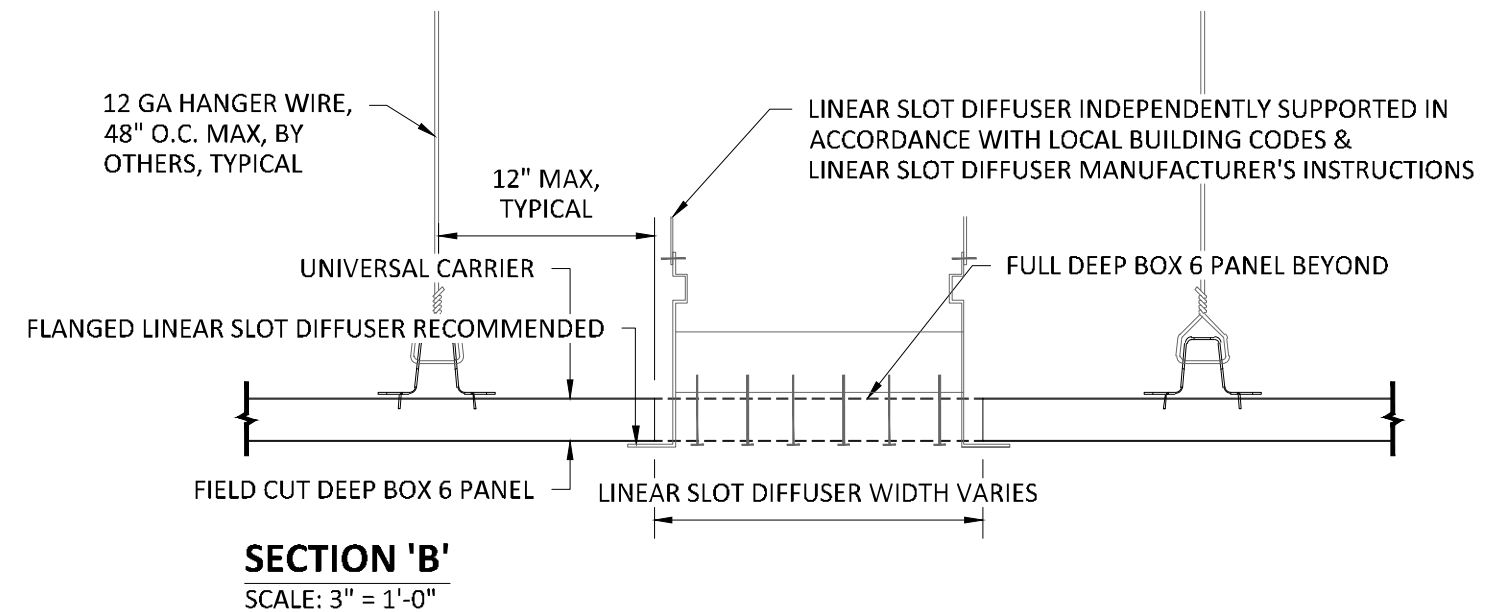
### TYPICAL ISOMETRIC

SCALE: NOT TO SCALE



### TOP VIEW

SCALE: NOT TO SCALE



NOTE: DIFFUSER WITH TRIM FLANGE NOT BY HUNTER DOUGLAS

### SPECIFICATIONS

(unless noted otherwise)

MATERIAL: .020" | .025" | .032" | .040" ALUMINUM DEEP BOX 6 PANEL | .040" ALUMINUM UNIVERSAL CARRIER  
FINISH: PAINT | POWDER COAT | DECORATED WOOD FINISH | WOOD VENEER | LUXACOTE  
PERFORATION: NOT AVAILABLE

### FIELD CUT PANEL FOR TYPICAL DIFFUSER

PROJECT: LINEAR DEEP BOX 6 PRODUCT SPECIFICATIONS  
DRAWING NUMBER: DEEP BOX6-A1.11  
SCALE: AS SHOWN  
DRAWN BY: HDA ENGINEERING  
DATE: 12/5/16

