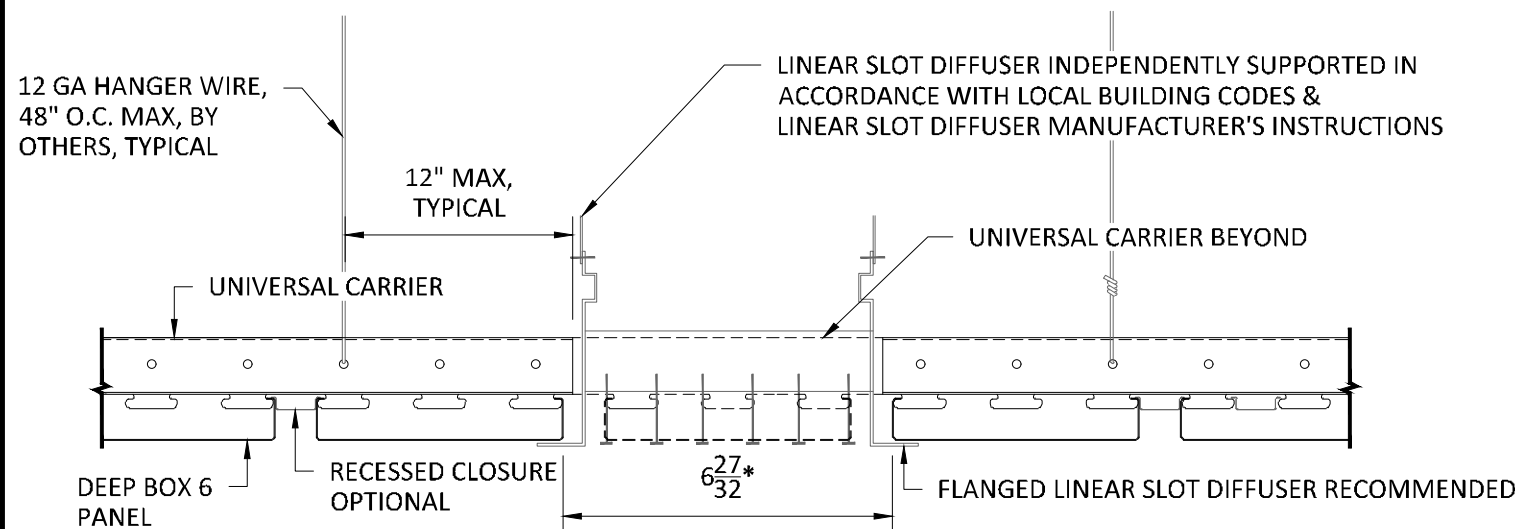


TYPICAL ISOMETRIC

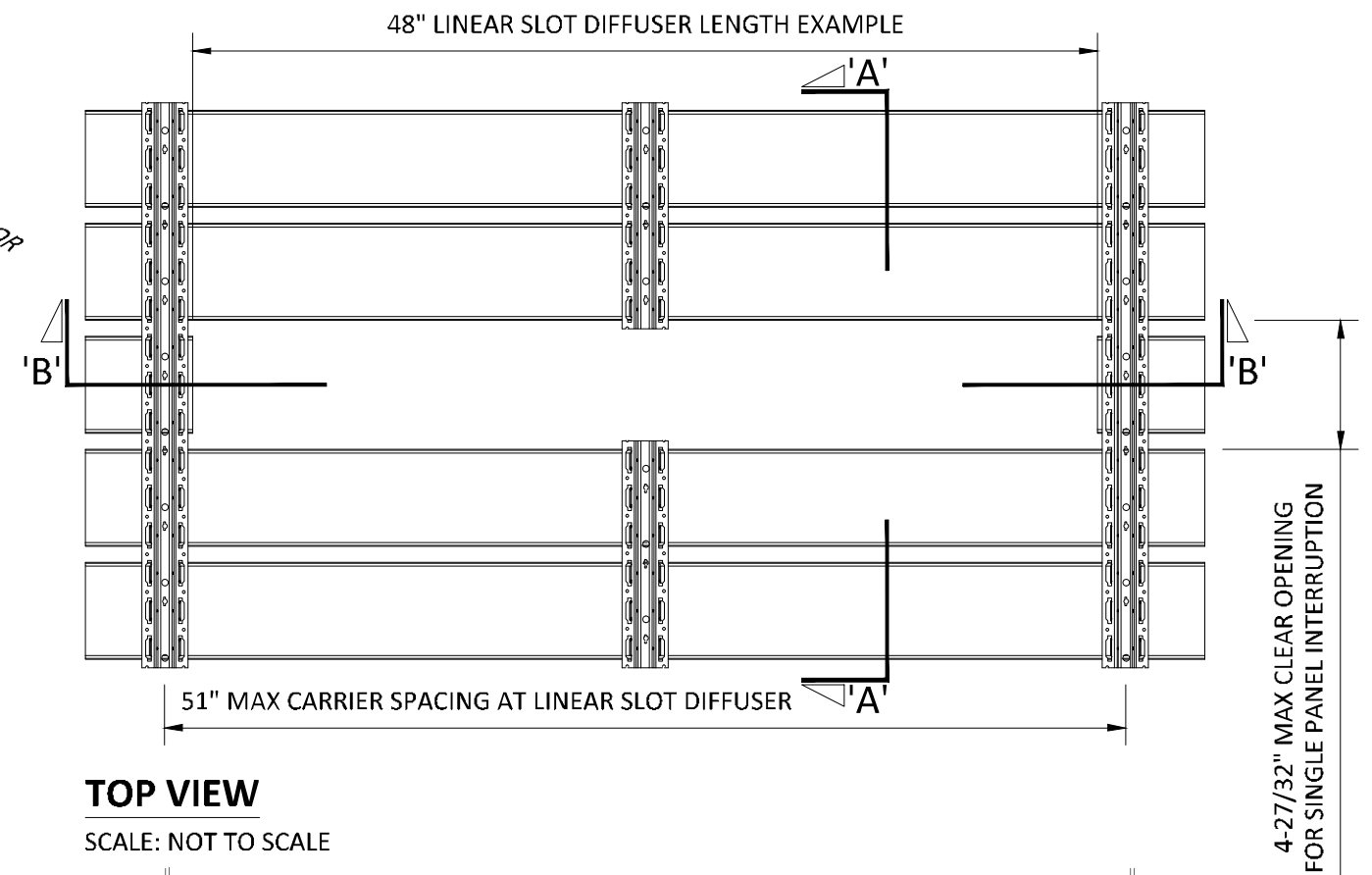
SCALE: NOT TO SCALE



SECTION 'A'

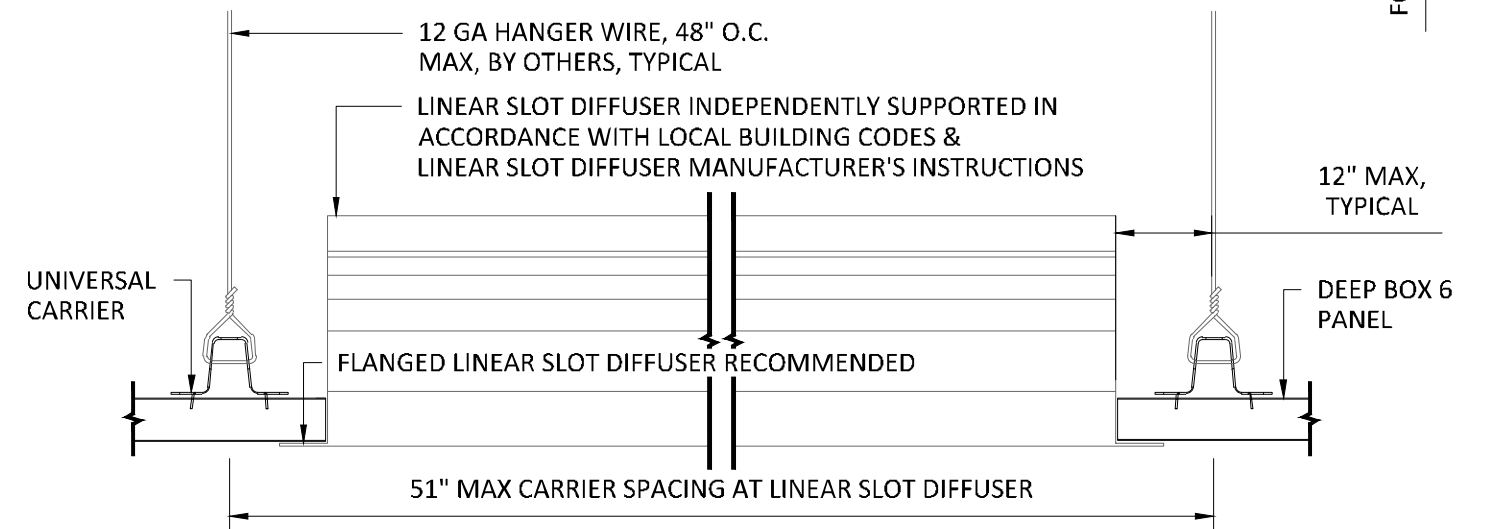
SCALE: 3" = 1'-0"

*6-27/32" MAX CLEAR OPENING, PANEL EDGE TO PANEL EDGE, FOR SINGLE PANEL INTERRUPTION.
12-27/32" MAX CLEAR OPENING, PANEL EDGE TO PANEL EDGE, FOR DOUBLE PANEL INTERRUPTION.



TOP VIEW

SCALE: NOT TO SCALE



SECTION 'B'

SCALE: 3" = 1'-0"

NOTE: DIFFUSER WITH TRIM FLANGE NOT BY HUNTER DOUGLAS

SPECIFICATIONS

(unless noted otherwise)

MATERIAL: .020" | .025" | .032" | .040" ALUMINUM DEEP BOX 6 PANEL | .040" ALUMINUM UNIVERSAL CARRIER
FINISH: PAINT | POWDER COAT | DECORATED WOOD FINISH | WOOD VENEER | LUXACOTE
PERFORATION: NOT AVAILABLE

INTERRUPTED PANEL FOR TYPICAL DIFFUSER

PROJECT: LINEAR DEEP BOX 6 PRODUCT SPECIFICATIONS
DRAWING NUMBER: DEEP BOX6-A1.10
SCALE: AS SHOWN
DRAWN BY: HDA ENGINEERING
DATE: 12/5/16