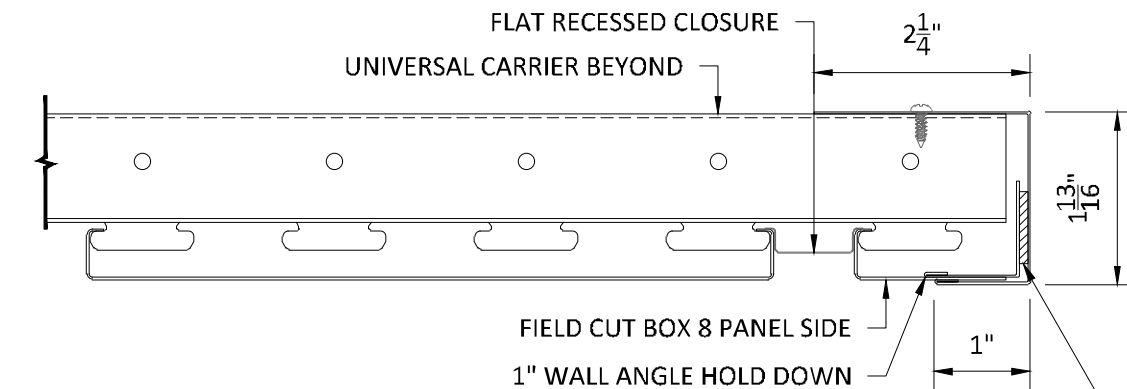


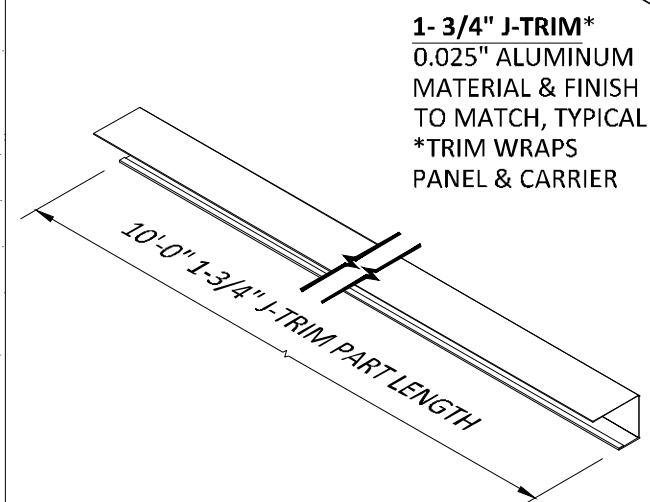
SECTION 'A'
SCALE: 6" = 1'-0"



SECTION 'B'
SCALE: 6" = 1'-0"

DOUBLE-SIDED ADHESIVE
TO SECURE 1" WALL
ANGLE OR USE POP-RIVET

1 3/4" J-TRIM RESTS AGAINST WALL



1- 3/4" J-TRIM*
0.025" ALUMINUM
MATERIAL & FINISH
TO MATCH, TYPICAL
*TRIM WRAPS
PANEL & CARRIER

10'-0" 1-3/4" J-TRIM PART LENGTH

BOX 8 PANEL

UNIVERSAL CARRIER

FLAT RECESSED CLOSURE

*SOME VERTICAL SUPPORTS AND HANGER WIRE OMITTED FOR CLARITY

EXTERIOR INSTALLATION

HunterDouglas
Architectural

5015 Oakbrook Parkway, Suite 100
Norcross, GA 30093
T 800.366.4327
F 770.806.0214
HDArchitectural.com

*All rights reserved. This
drawing is the property
of Hunter Douglas. It
may not be copied or
multiplied, neither
wholly nor partly. It may
not be submitted for
perusal to third parties.*

SPECIFICATIONS
(unless noted otherwise)

MATERIAL: .032" | .040" ALUMINUM BOX 8 PANEL | .040" ALUMINUM UNIVERSAL
CARRIER
FINISH: PAINT | POWDER COAT | DECORATED WOOD FINISH | LUXACOTE
PERFORATION: NON-PERFORATED | #160

1 3/4" FLOATING 'J' TRIM

PROJECT: LINEAR EXTERIOR BOX 8 PRODUCT SPECIFICATIONS
DRAWING NUMBER: BOX8-B1.8
SCALE: AS SHOWN
DRAWN BY: HDA ENGINEERING
DATE: 12/5/16