

EXTERIOR INSTALLATION



5015 Oakbrook Parkway, Suite 100
Norcross, GA 30093
T 800.366.4327
F 770.806.0214
HDarchitectural.com

All rights reserved. This drawing is the property of Hunter Douglas. It may not be copied or multiplied, neither wholly nor partly. It may not be submitted for perusal to third parties.

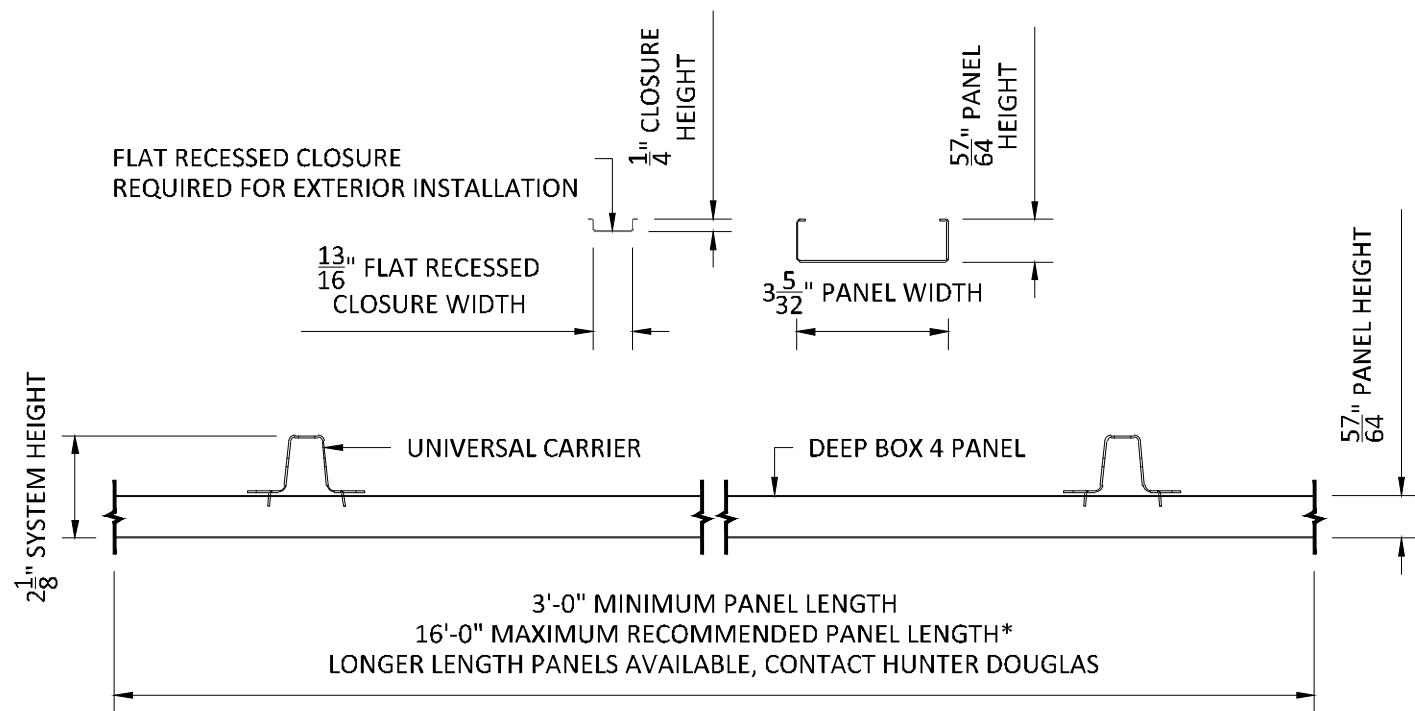
SPECIFICATIONS

(unless noted otherwise)

MATERIAL: .025" | .032" | .040" ALUMINUM DEEP BOX 4 PANEL | .040" ALUMINUM
UNIVERSAL CARRIER
FINISH: PAINT | POWDER COAT | DECORATED WOOD FINISH | LUXACOTE
PERFORATION: NOT AVAILABLE

OVERALL ISOMETRIC VIEW

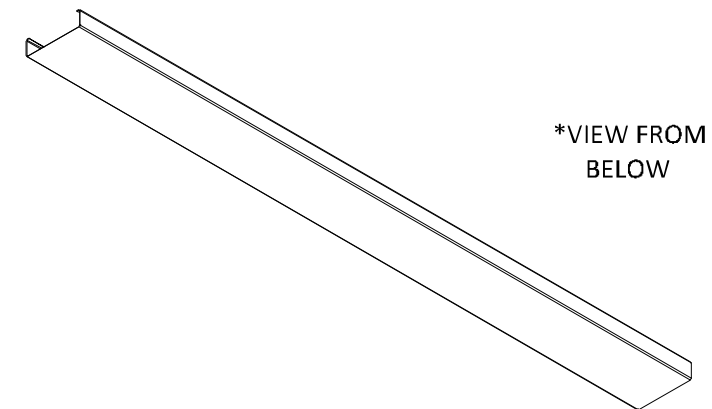
PROJECT: LINEAR EXTERIOR DEEP BOX 4 PRODUCT SPECIFICATIONS
DRAWING NUMBER: DEEP BOX4-B1.0
SCALE: AS SHOWN
DRAWN BY: HDA ENGINEERING
DATE: 12/5/16



FACTORY END & SIDE PANEL VIEW

SCALE: 3" = 1'-0"

*PANEL LENGTHS AVAILABLE IN $\pm \frac{1}{8}$ " TOLERANCE,
MINIMUM QUANTITIES MAY APPLY



*VIEW FROM
BELOW

MATERIAL THICKNESS

DEEP BOX 4: .025", .032", OR .040" ALUMINUM

PANEL FINISHES

PAINTED & POWDER COATED - INTERIOR & EXTERIOR

LUXACOTE - INTERIOR & EXTERIOR

DECORATED WOOD FINISH (POWDER COATED) - INTERIOR & EXTERIOR

PANEL MATERIALS & FINISHES

SCALE: NOT TO SCALE



5015 Oakbrook Parkway, Suite 100
Norcross, GA 30093
T 800.366.4327
F 770.806.0214
HDarchitectural.com

All rights reserved. This drawing is the property of Hunter Douglas. It may not be copied or multiplied, neither wholly nor partly. It may not be submitted for perusal to third parties.

SPECIFICATIONS

(unless noted otherwise)

MATERIAL: .025" | .032" | .040" ALUMINUM DEEP BOX 4 PANEL | .040" ALUMINUM

UNIVERSAL CARRIER

FINISH: PAINT | POWDER COAT | DECORATED WOOD FINISH | LUXACOTE

PERFORATION: NOT AVAILABLE

PANEL SPECIFICATION

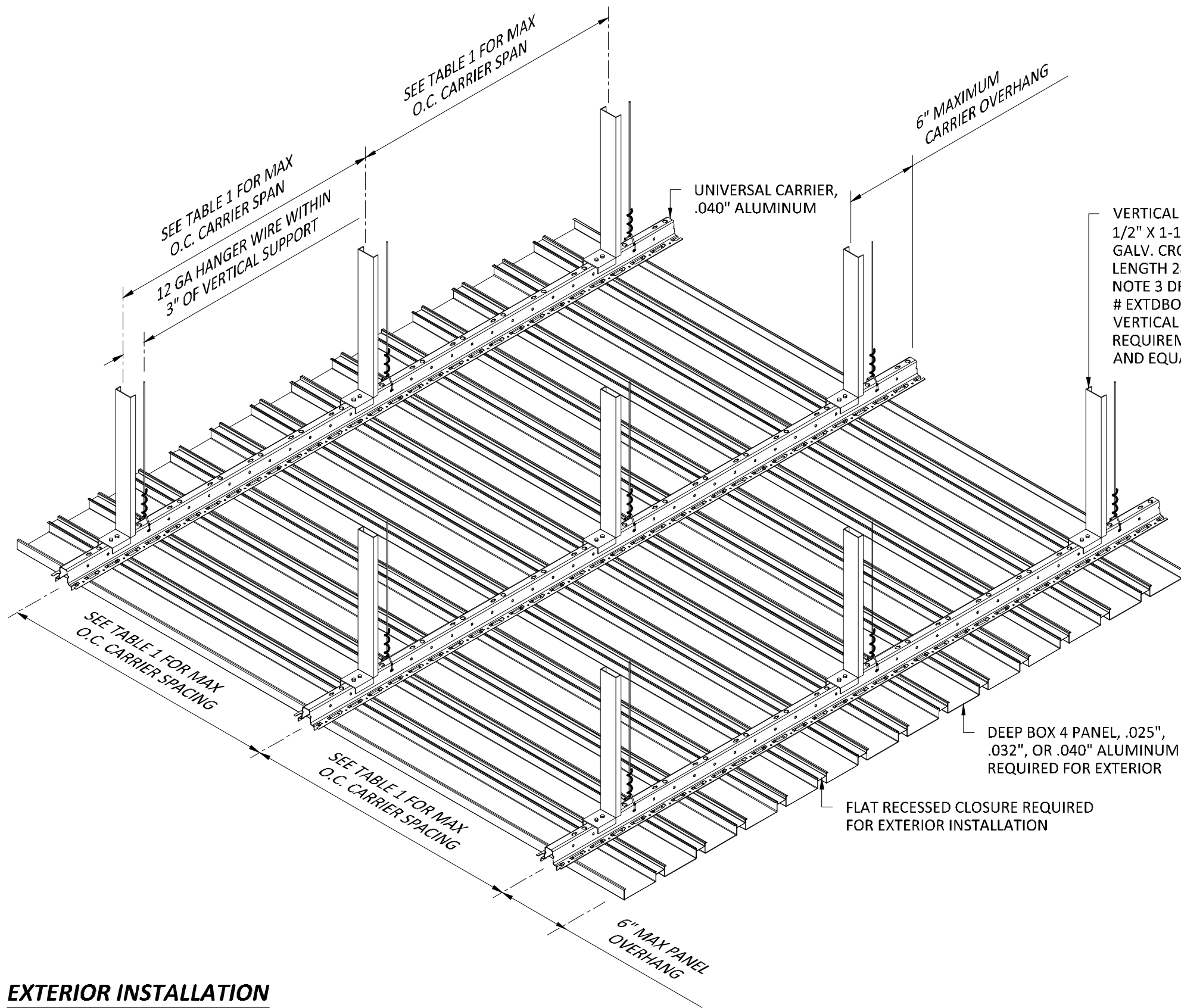
PROJECT: LINEAR EXTERIOR DEEP BOX 4 PRODUCT SPECIFICATIONS

DRAWING NUMBER: DEEP BOX4-B1.1

SCALE: AS SHOWN

DRAWN BY: HDA ENGINEERING

DATE: 12/5/16



EXTERIOR INSTALLATION

NOTE A:

CARRIER SPACING (PANEL SPAN) AND CARRIER SPAN (HANGER WIRE & VERTICAL SUPPORT SPACING) VARIES DEPENDING ON DESIGN WIND PRESSURE (POUNDS PER SQUARE FOOT). AS A GENERAL GUIDE, REFER TO THE DETAIL AND WIND LOAD TABLE 1 BELOW FOR CARRIER SPACING AND CARRIER SPAN. THE WIND LOAD CRITERIA IS BASED ON USING 3 OR MORE ROWS OF CARRIER. MAXIMUM PANEL OVERHANG = 6". MAXIMUM CARRIER OVERHANG = 6".

HANGER WIRE (12 GA MIN.) MUST BE LOCATED AT EACH VERTICAL SUPPORT STRUT. VERTICAL SUPPORT STRUT MUST NOT EXCEED SPACING SHOWN FOR A GIVEN DESIGN WIND PRESSURE. SEE DRAWING # EXTDBOX4-B1.3 FOR VERTICAL SUPPORT SPECIFICATION. HANGER WIRE AND VERTICAL SUPPORT STRUT MUST BE ATTACHED TO STRUCTURE ABOVE TO SAFELY SUPPORT ALL LOADS IMPOSED BY SOFFIT SYSTEM. ATTACHMENT TO STRUCTURE DESIGNED AND PROVIDED BY OTHERS, NOT BY HUNTER DOUGLAS.

NOTE B:

ALL PENETRATIONS IN CEILING TO BE FIELD LOCATED AND FIELD CUT. TRIM FOR THESE ITEMS NOT BY HUNTER DOUGLAS.

NOTE C:

ATTACHMENT TO STRUCTURE DESIGNED AND PROVIDED BY OTHERS, NOT BY HUNTER DOUGLAS.

TABLE 1 - DESIGN WIND LOAD - LINEAR DEEP BOX EXTERIOR CEILING SYSTEM

PANEL TYPE: .025", .032", OR .040" ALUMINUM, DEEP BOX 4 PANEL
CARRIER TYPE: .040" ALUMINUM, UNIVERSAL CARRIER

ALLOWABLE CARRIER SPACING (PANEL SPAN)
ALLOWABLE CARRIER SUPPORT SPACING (HANGER WIRE/VERTICAL SUPPORT SPACING)

* NOTE: CARRIER SPACING BASED ON USING 3 OR MORE CARRIERS		
** POUNDS PER SQUARE FOOT		
DESIGN WIND PRESSURE (POSITIVE OR NEGATIVE PSF**)	CARRIER SPACING * (PANEL SPAN)	CARRIER SPAN (VERTICAL SUPPORT SPACING)
20	3'-4"	1'-11"
25	3'-0"	1'-10"
30	2'-8"	1'-9"
35	2'-6"	1'-8"
40	2'-4"	1'-8"



5015 Oakbrook Parkway, Suite 100
Norcross, GA 30093
T 800.366.4327
F 770.806.0214
HDarchitectural.com

All rights reserved. This drawing is the property of Hunter Douglas. It may not be copied or multiplied, neither wholly nor partly. It may not be submitted for perusal to third parties.

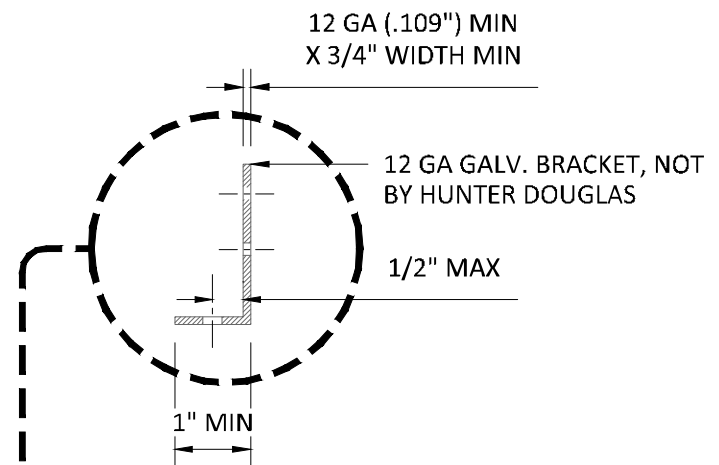
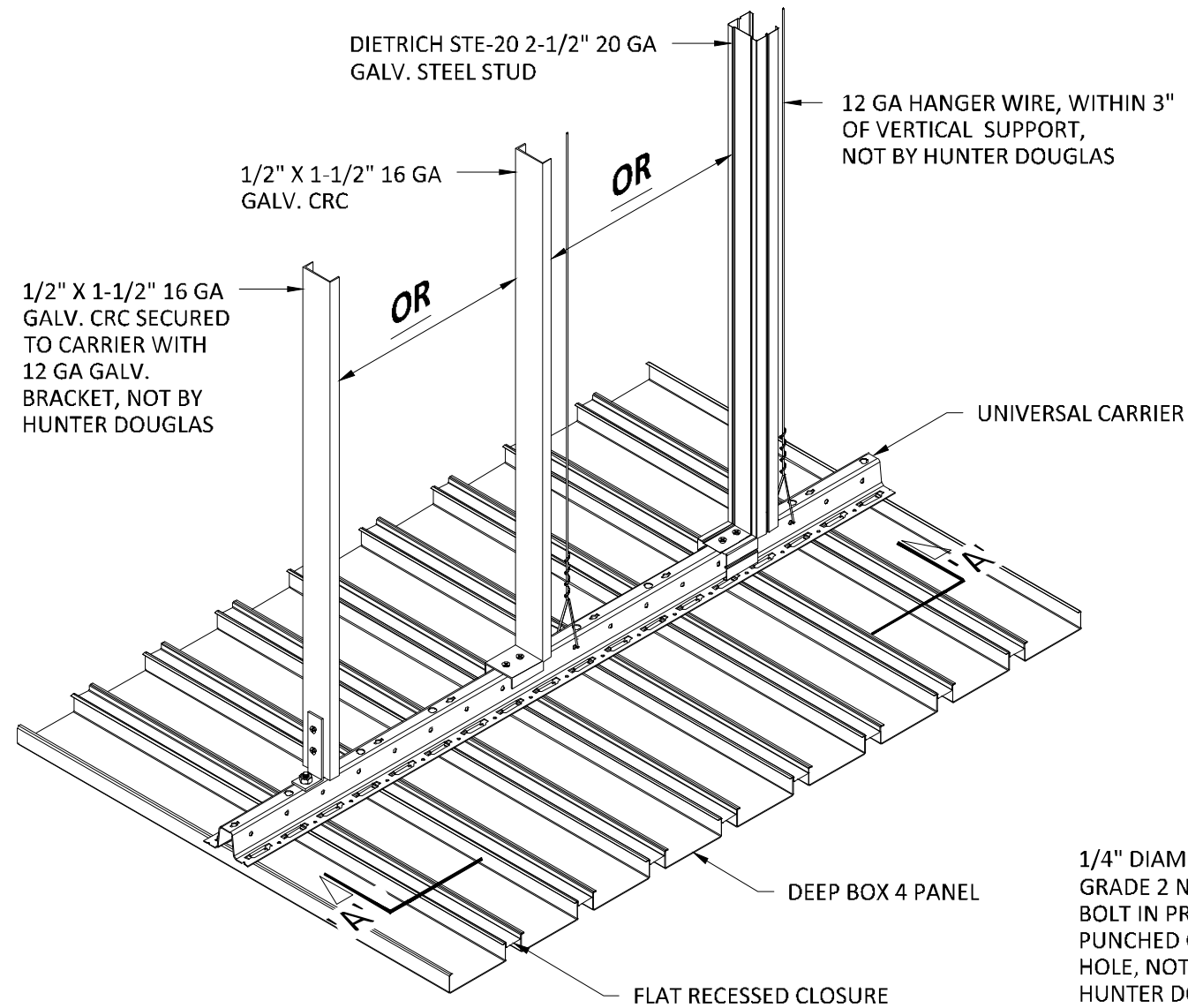
SPECIFICATIONS

(unless noted otherwise)

MATERIAL: .025" | .032" | .040" ALUMINUM DEEP BOX 4 PANEL | .040" ALUMINUM
UNIVERSAL CARRIER
FINISH: PAINT | POWDER COAT | DECORATED WOOD FINISH | LUXACOTE
PERFORATION: NOT AVAILABLE

EXTERIOR SUSPENSION SPECIFICATION

PROJECT: LINEAR EXTERIOR DEEP BOX 4 PRODUCT SPECIFICATIONS
DRAWING NUMBER: DEEP BOX4-B1.2
SCALE: AS SHOWN
DRAWN BY: HDA ENGINEERING
DATE: 12/5/16



NOTE A:

VERTICAL SUPPORT STRUTS (MINIMUM 1-1/2" 16 GA GALV. 'C' CHANNEL OR EQUAL, MAX LENGTH OF 28"). SEE DRAWING # EXTDBOX4-B1.2 FOR EXTERIOR SUSPENSION REQUIREMENTS. VERTICAL SUPPORTS SHALL BE LOCATED WITHIN 6" OF THE ENDS OF EACH CARRIER AND WITHIN 6" ON BOTH SIDES OF A CARRIER SPLICE.

VERTICAL SUPPORT EQUALS:

DIETRICH STE-20 2-1/2" 20 GA GALV. MAX LENGTH OF 85"

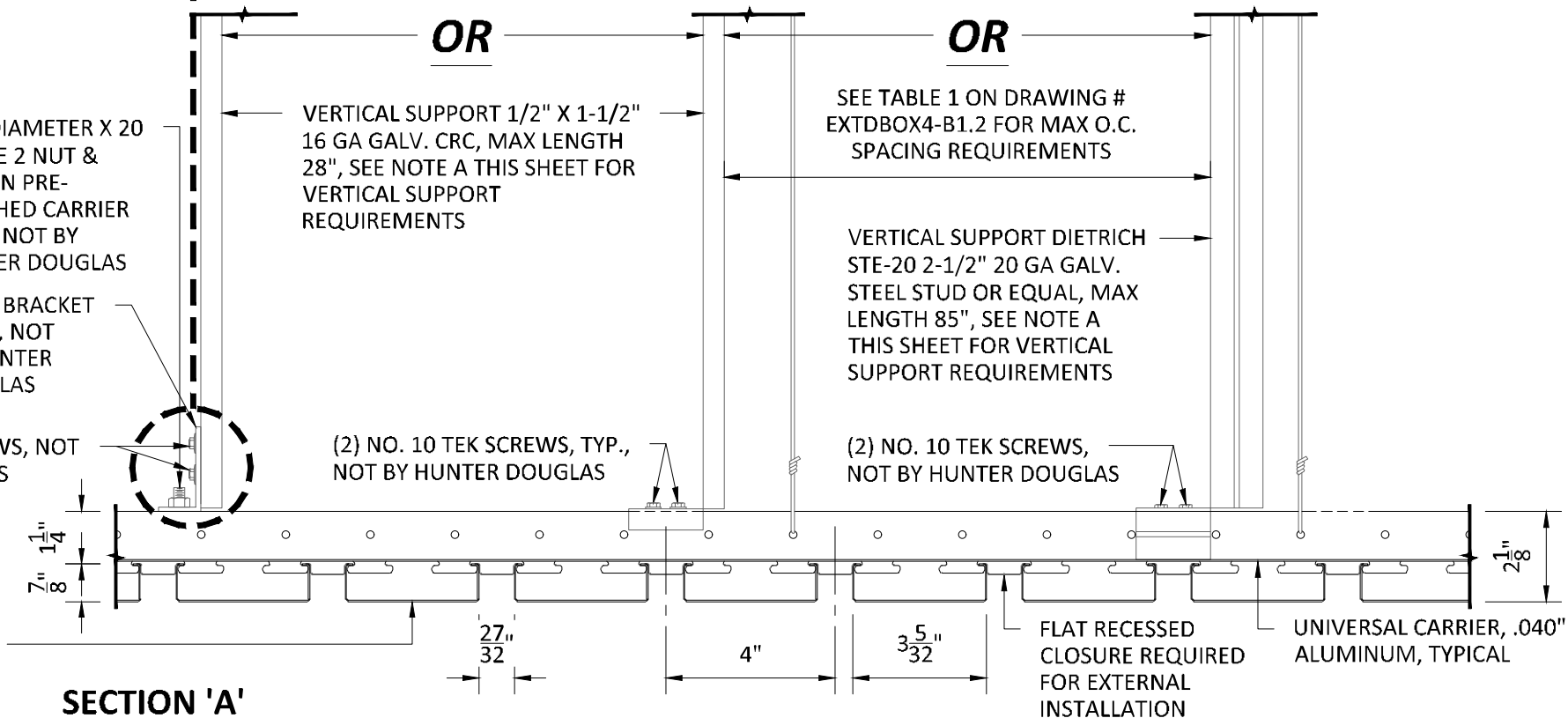
DIETRICH TRNB-25 MAX LENGTH OF 78"

*** ATTACHMENT TO STRUCTURE ABOVE SHALL BE DESIGNED AND PROVIDED BY OTHERS TO SUPPORT ALL LOADS IMPOSED BY CEILING SOFFIT SYSTEM ***

1/4" DIAMETER X 20 GRADE 2 NUT & BOLT IN PRE-PUNCHED CARRIER HOLE, NOT BY HUNTER DOUGLAS

12 GA BRACKET GALV., NOT BY HUNTER DOUGLAS

(2) NO. 10 TEK SCREWS, NOT BY HUNTER DOUGLAS



SECTION 'A'
SCALE: 3" = 1'-0"

NOTE B:
ALL PENETRATIONS IN CEILING TO BE FIELD LOCATED AND FIELD CUT. TRIM FOR THESE ITEMS NOT BY HUNTER DOUGLAS.

NOTE C:
ATTACHMENT TO STRUCTURE DESIGNED AND PROVIDED BY OTHERS, NOT BY HUNTER DOUGLAS.

EXTERIOR INSTALLATION



5015 Oakbrook Parkway, Suite 100
Norcross, GA 30093
T 800.366.4327
F 770.806.0214
HDarchitectural.com

All rights reserved. This drawing is the property of Hunter Douglas. It may not be copied or multiplied, neither wholly nor partly. It may not be submitted for perusal to third parties.

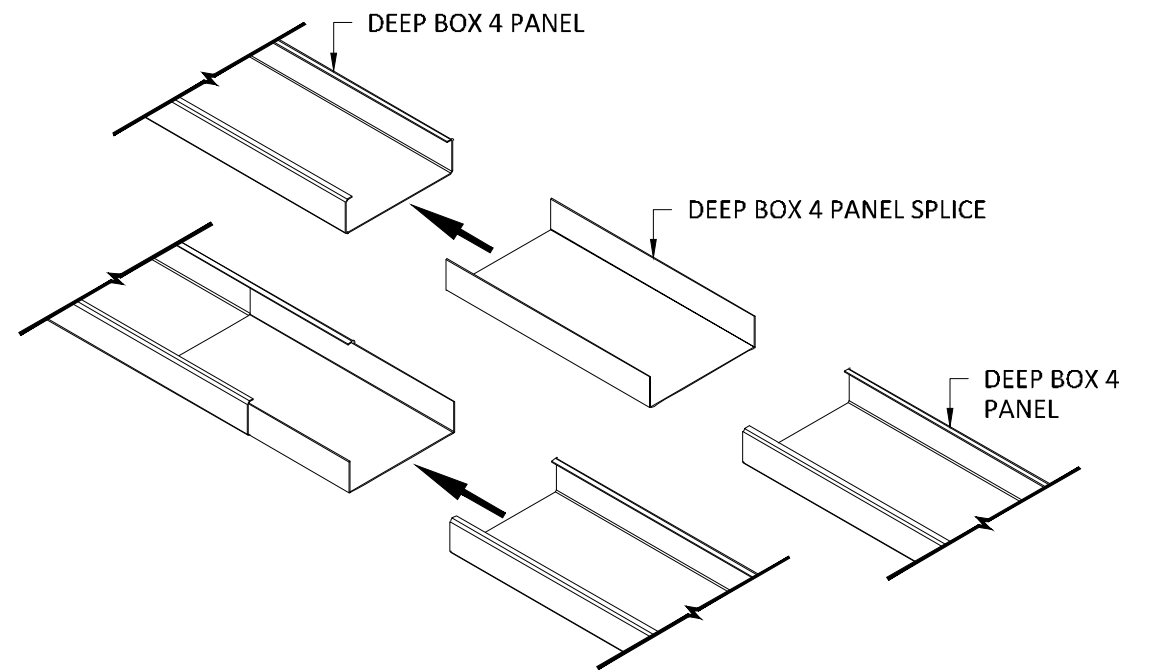
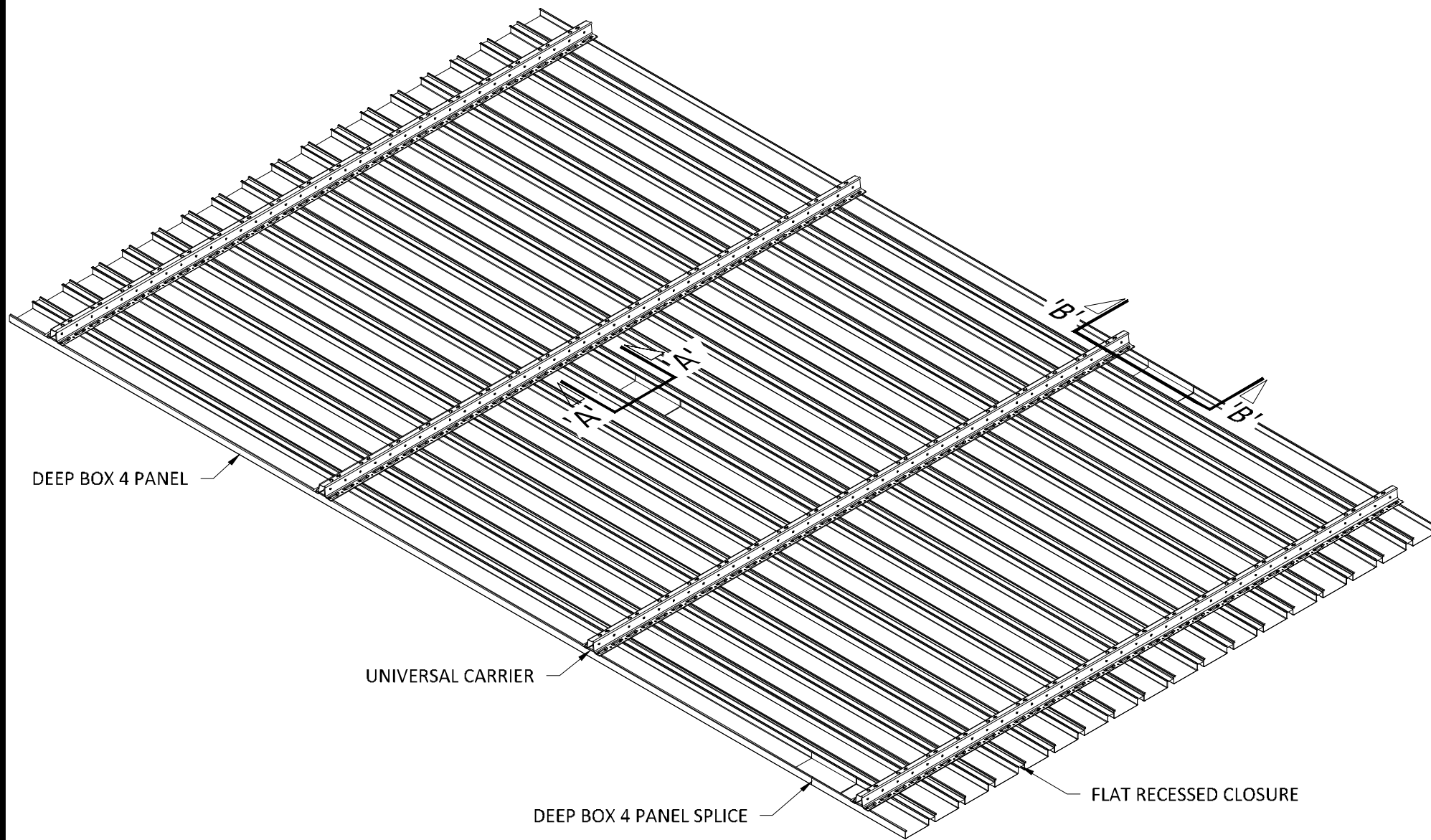
SPECIFICATIONS

(unless noted otherwise)

MATERIAL: .025" | .032" | .040" ALUMINUM DEEP BOX 4 PANEL | .040" ALUMINUM UNIVERSAL CARRIER
FINISH: PAINT | POWDER COAT | DECORATED WOOD FINISH | LUXACOTE
PERFORATION: NOT AVAILABLE

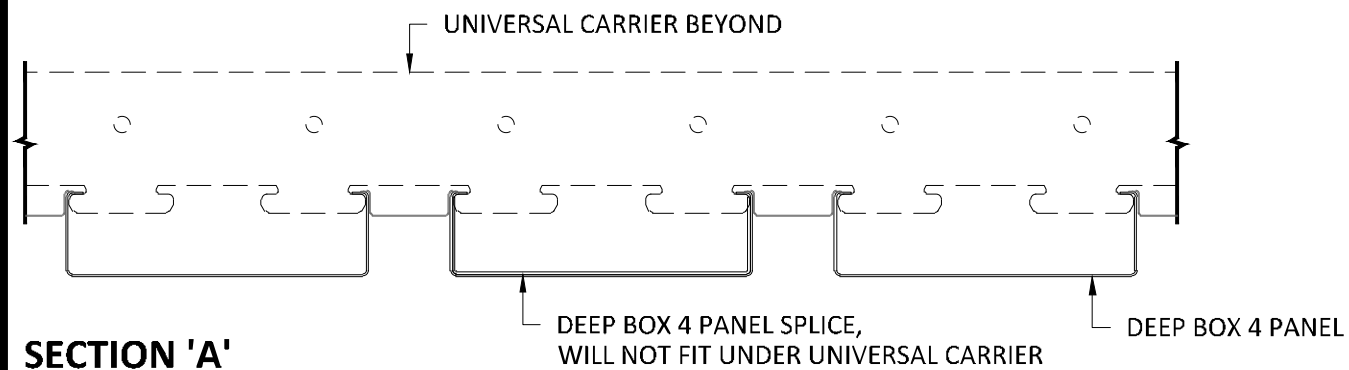
EXTERIOR VERTICAL SUPPORT SPECIFICATION

PROJECT: LINEAR EXTERIOR DEEP BOX 4 PRODUCT SPECIFICATIONS
DRAWING NUMBER: DEEP BOX4-B1.3
SCALE: AS SHOWN
DRAWN BY: HDA ENGINEERING
DATE: 12/5/16

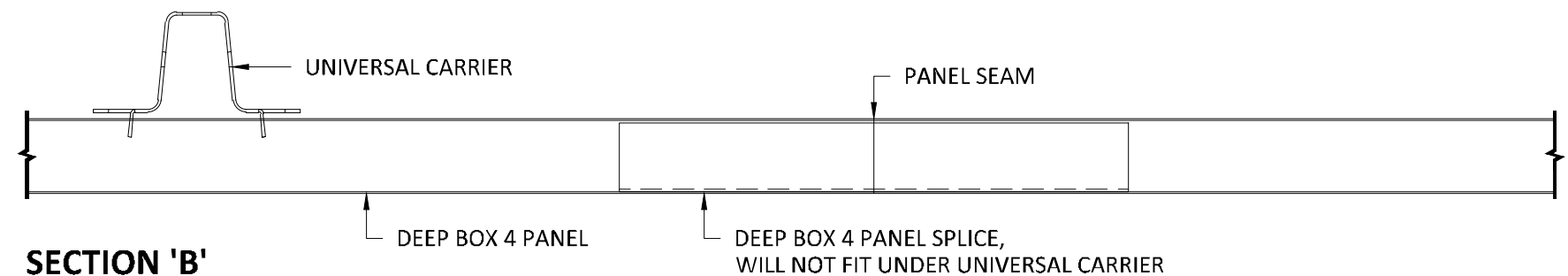


NOTE 1:
DO NOT SPLICE PANELS DIRECTLY BELOW UNIVERSAL CARRIERS.
PANEL SPLICES DO NOT FIT UNDER CARRIERS.

NOTE 2:
FIELD CUT PANELS AS REQUIRED TO CREATE A RANDOM
STAGGERED SEAM PATTERN. AVOID ALIGNED SEAMS.



SECTION 'A'
SCALE: 6" = 1'-0"



SECTION 'B'
SCALE: 6" = 1'-0"

EXTERIOR INSTALLATION

*VERTICAL SUPPORTS AND HANGER WIRE OMITTED FOR CLARITY



5015 Oakbrook Parkway, Suite 100
Norcross, GA 30093
T 800.366.4327
F 770.806.0214
HDarchitectural.com

All rights reserved. This drawing is the property of Hunter Douglas. It may not be copied or multiplied, neither wholly nor partly. It may not be submitted for perusal to third parties.

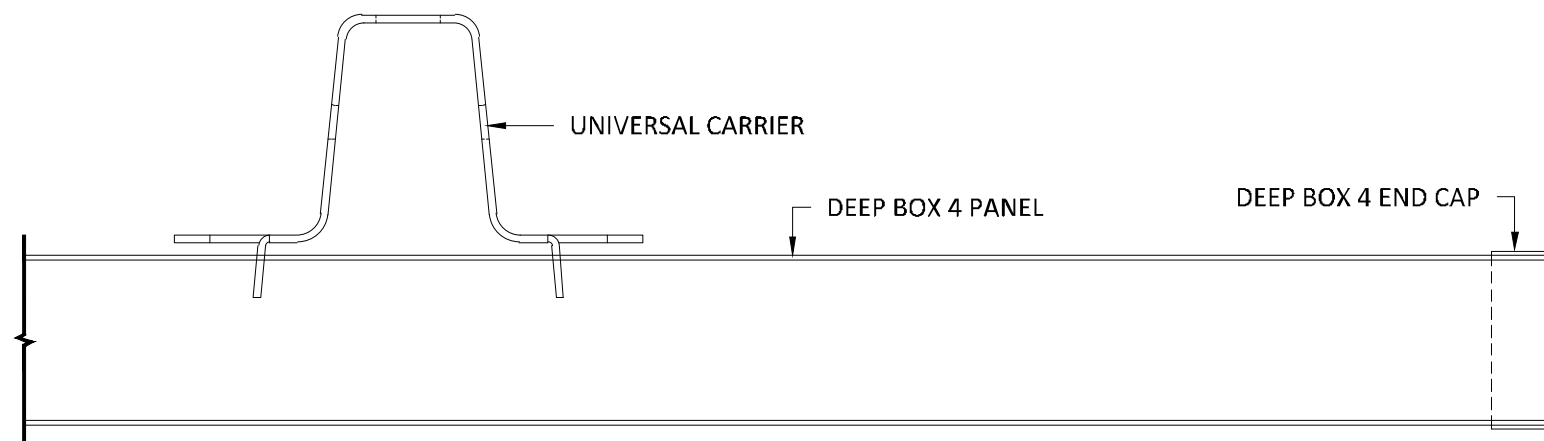
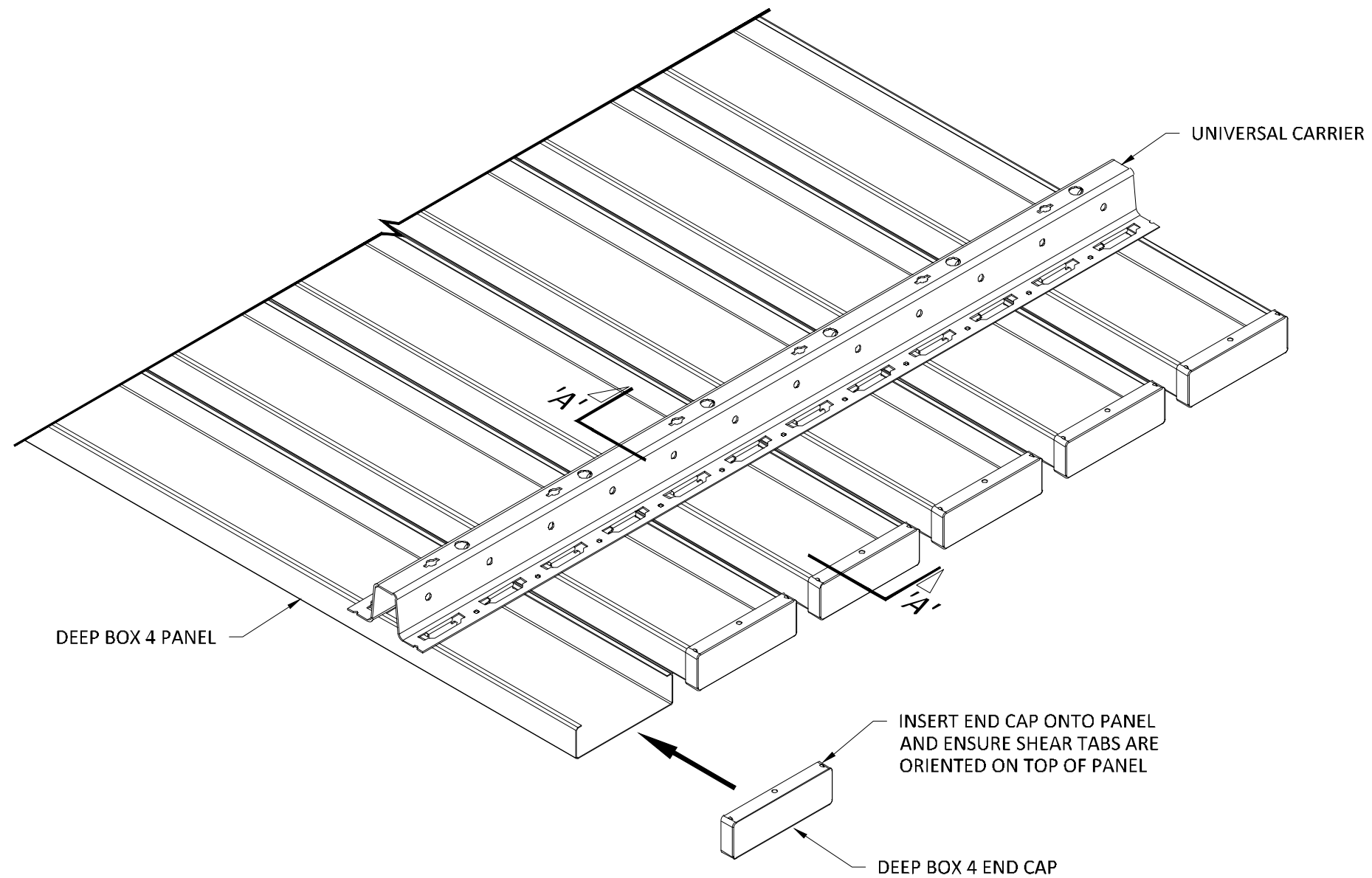
SPECIFICATIONS

(unless noted otherwise)

MATERIAL: .025" | .032" | .040" ALUMINUM DEEP BOX 4 PANEL | .040" ALUMINUM UNIVERSAL CARRIER
FINISH: PAINT | POWDER COAT | DECORATED WOOD FINISH | LUXACOTE
PERFORATION: NOT AVAILABLE

PANEL SPLICE SPECIFICATION

PROJECT: LINEAR EXTERIOR DEEP BOX 4 PRODUCT SPECIFICATIONS
DRAWING NUMBER: DEEP BOX4-B1.4
SCALE: AS SHOWN
DRAWN BY: HDA ENGINEERING
DATE: 12/5/16



SECTION 'A'
SCALE: FULL (1:1)

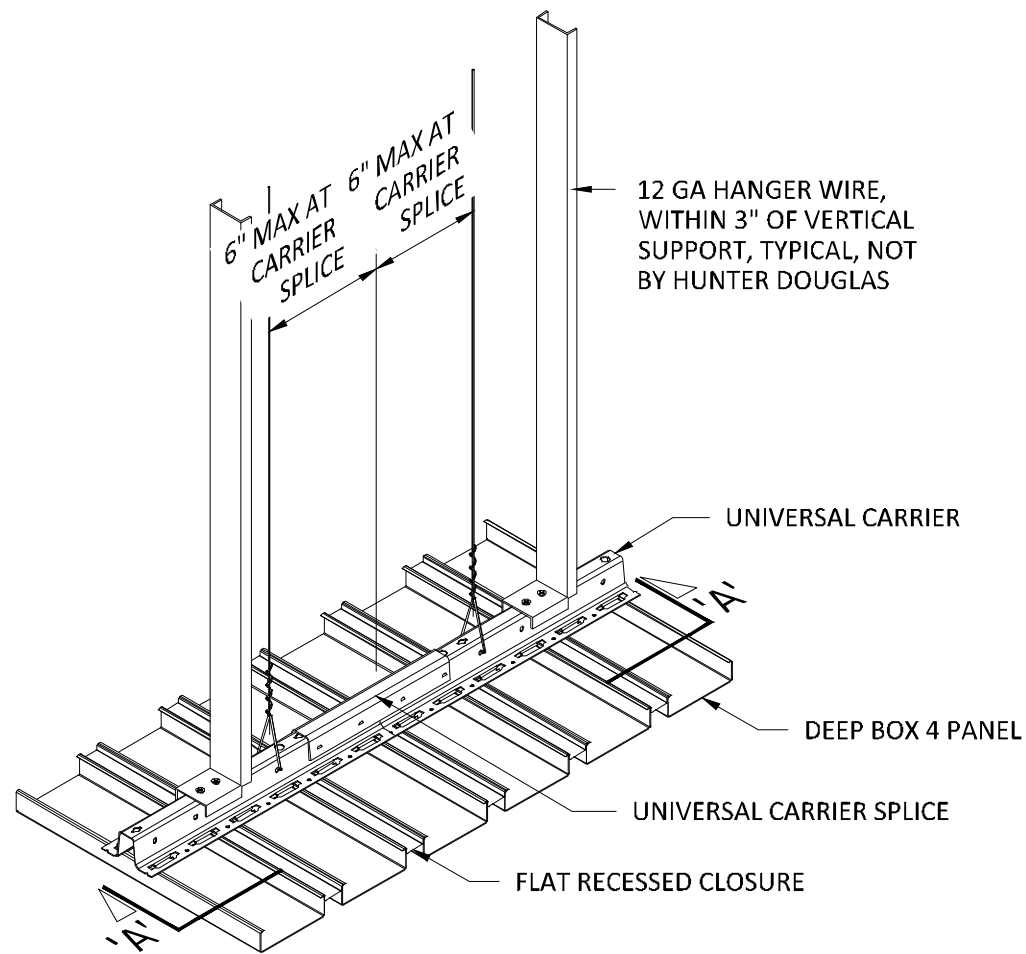
*VERTICAL SUPPORTS AND HANGER WIRE OMITTED FOR CLARITY

SPECIFICATIONS
(unless noted otherwise)

MATERIAL: .025" | .032" | .040" ALUMINUM DEEP BOX 4 PANEL | .040" ALUMINUM
UNIVERSAL CARRIER
FINISH: PAINT | POWDER COAT | DECORATED WOOD FINISH | LUXACOTE
PERFORATION: NOT AVAILABLE

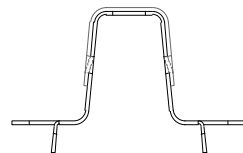
PANEL END CAP

PROJECT: LINEAR EXTERIOR DEEP BOX 4 PRODUCT SPECIFICATIONS
DRAWING NUMBER: DEEP BOX4-B1.5
SCALE: AS SHOWN
DRAWN BY: HDA ENGINEERING
DATE: 12/5/16



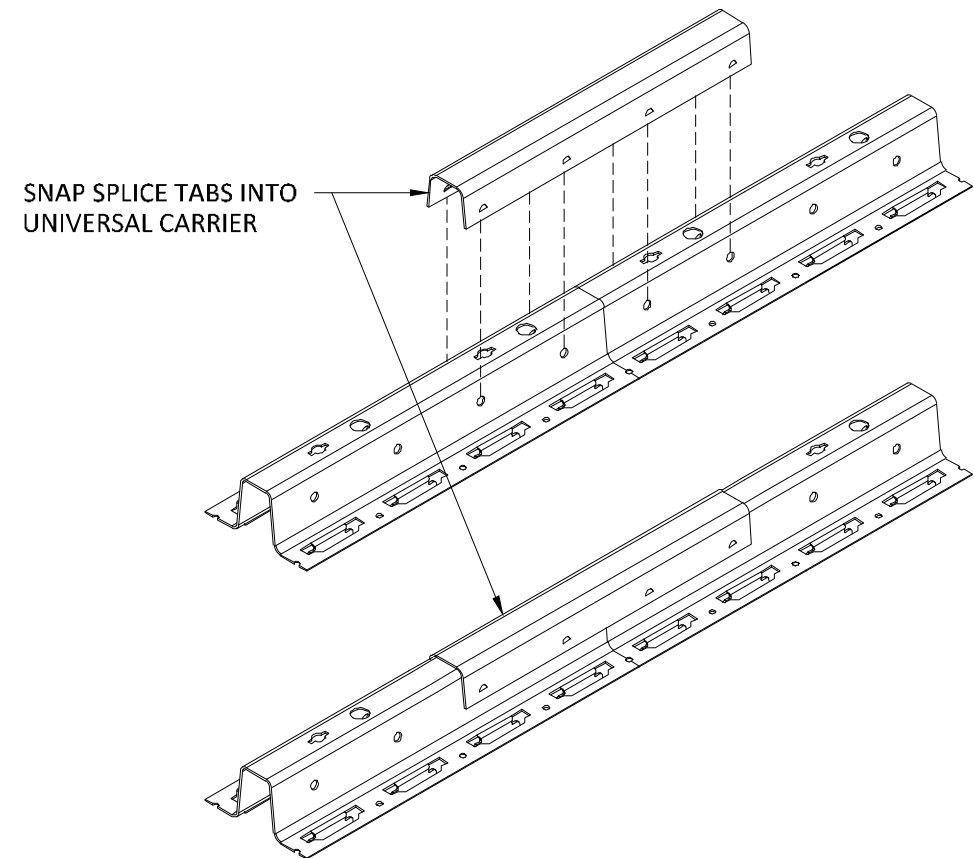
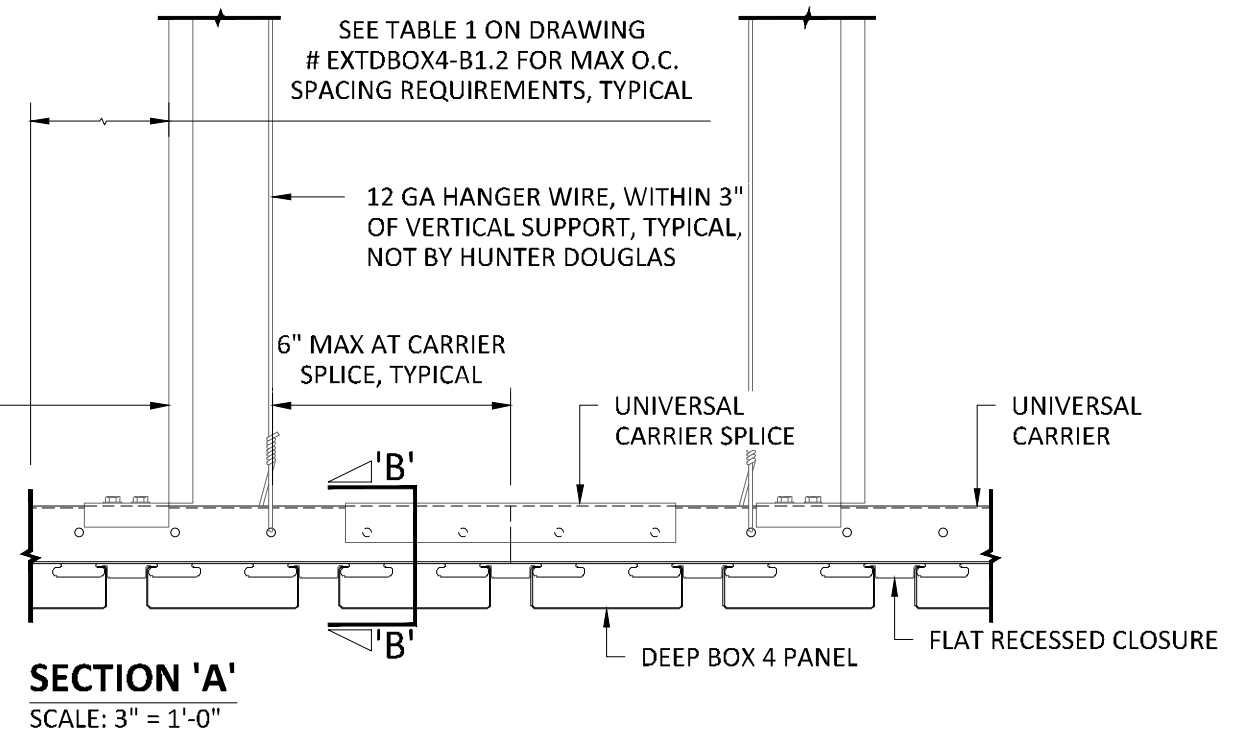
IF THE DESIRED CARRIER LENGTH EXCEEDS THE MAXIMUM OF 16'-0", USE A UNIVERSAL CARRIER SPLICE TO CONNECT THE FACTORY CARRIER ENDS.

THE TABS OF THE SPLICE SNAP INTO THE HOLES IN THE CARRIER AND ADDITIONAL FIXING IS NOT NECESSARY. THE MODULE IS CONTINUED AUTOMATICALLY.



SECTION 'B'
SCALE: FULL (1:1)

VERTICAL SUPPORT 1/2" X 1-1/2"
16 GA GALV. CRC OR EQUAL,
MAX LENGTH 28", SEE NOTE A
ON DRAWING # EXTDBOX4-B1.3 FOR
VERTICAL SUPPORT REQUIREMENTS



EXTERIOR INSTALLATION



5015 Oakbrook Parkway, Suite 100
Norcross, GA 30093
T 800.366.4327
F 770.806.0214
HDarchitectural.com

All rights reserved. This drawing is the property of Hunter Douglas. It may not be copied or multiplied, neither wholly nor partly. It may not be submitted for perusal to third parties.

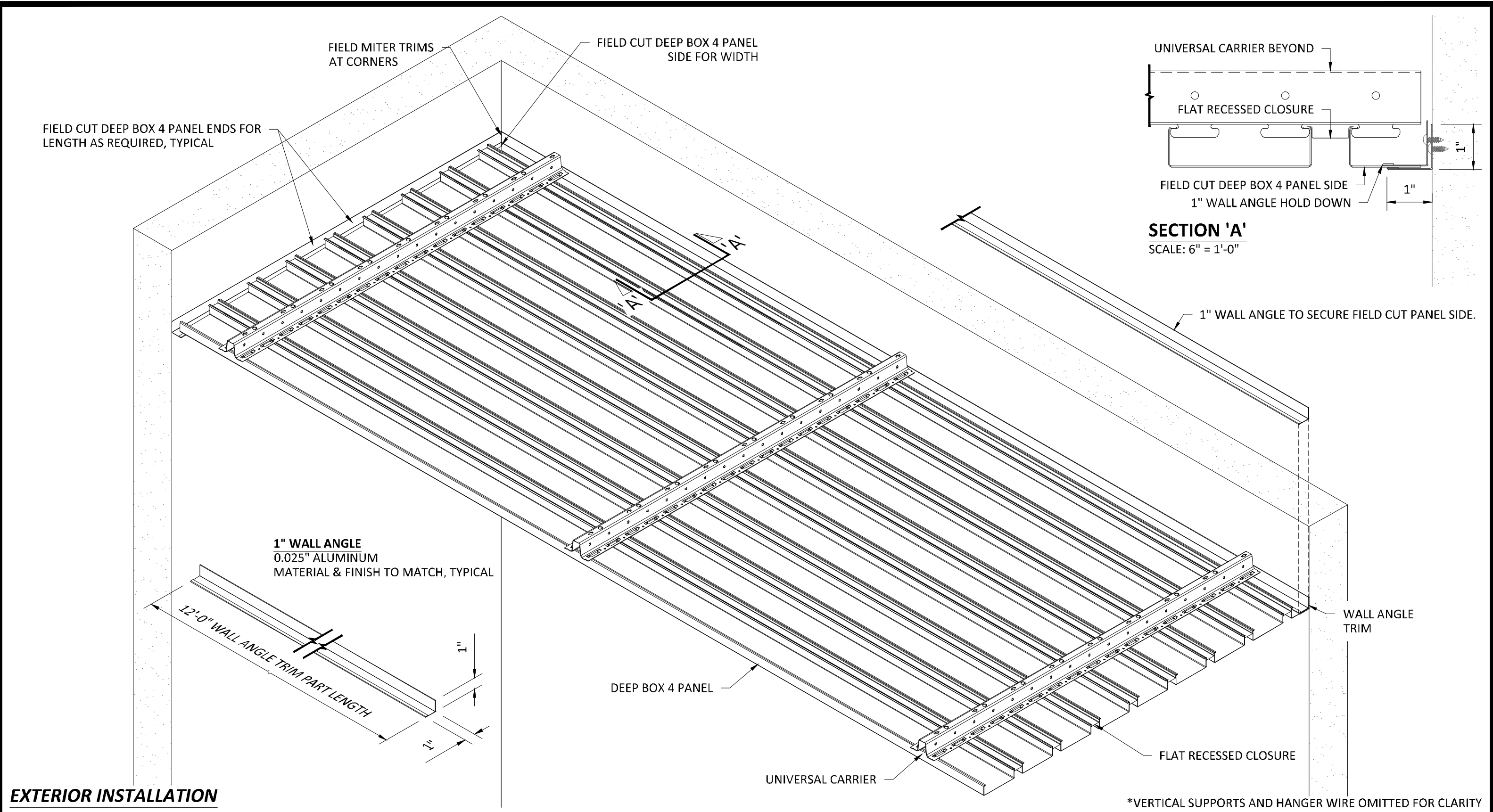
SPECIFICATIONS

(unless noted otherwise)

MATERIAL: .025" | .032" | .040" ALUMINUM DEEP BOX 4 PANEL | .040" ALUMINUM
UNIVERSAL CARRIER
FINISH: PAINT | POWDER COAT | DECORATED WOOD FINISH | LUXACOTE
PERFORATION: NOT AVAILABLE

UNIVERSAL CARRIER SPLICE

PROJECT: LINEAR EXTERIOR DEEP BOX 4 PRODUCT SPECIFICATIONS
DRAWING NUMBER: DEEP BOX4-B1.6
SCALE: AS SHOWN
DRAWN BY: HDA ENGINEERING
DATE: 12/5/16



EXTERIOR INSTALLATION



5015 Oakbrook Parkway, Suite 100
Norcross, GA 30093
T 800.366.4327
F 770.806.0214
HDarchitectural.com

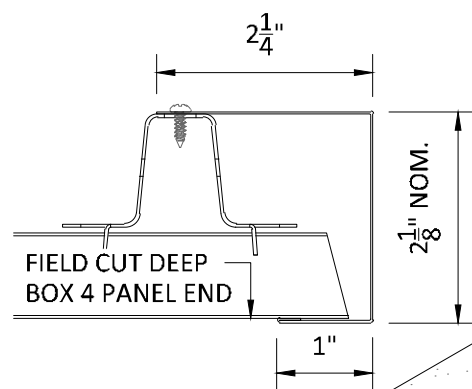
All rights reserved. This drawing is the property of Hunter Douglas. It may not be copied or multiplied, neither wholly nor partly. It may not be submitted for perusal to third parties.

SPECIFICATIONS

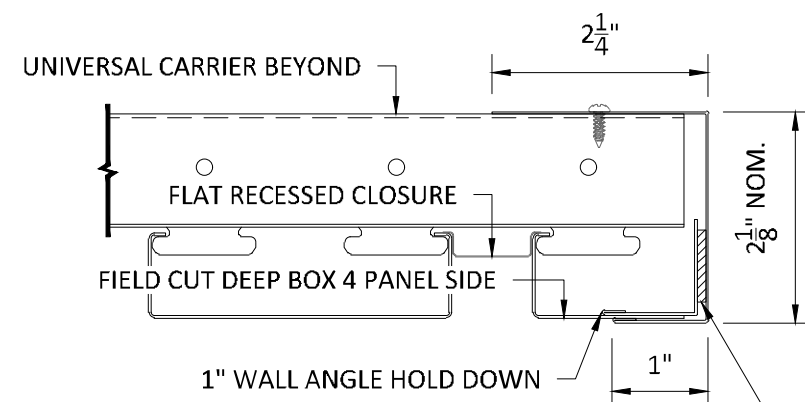
(unless noted otherwise)
MATERIAL: .025" | .032" | .040" ALUMINUM DEEP BOX 4 PANEL | .040" ALUMINUM UNIVERSAL CARRIER
FINISH: PAINT | POWDER COAT | DECORATED WOOD FINISH | LUXACOTE
PERFORATION: NOT AVAILABLE

WALL ANGLE TRIM

PROJECT: LINEAR EXTERIOR DEEP BOX 4 PRODUCT SPECIFICATIONS
DRAWING NUMBER: DEEP BOX4-B1.7
SCALE: AS SHOWN
DRAWN BY: HDA ENGINEERING
DATE: 12/5/16



SECTION 'A'
SCALE: 6" = 1'-0"



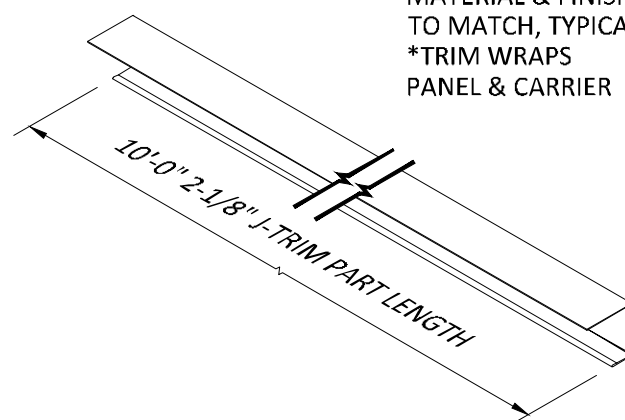
SECTION 'B'
SCALE: 6" = 1'-0"

DOUBLE-SIDED ADHESIVE
TO SECURE 1" WALL
ANGLE OR USE POP-RIVET

2 1/8" J-TRIM RESTS AGAINST WALL

NOTCH TRIM AS REQUIRED
FOR HANGER WIRE

2- 1/8" J-TRIM*
0.025" ALUMINUM
MATERIAL & FINISH
TO MATCH, TYPICAL
*TRIM WRAPS
PANEL & CARRIER



DEEP BOX 4 PANEL

FLAT RECESSED CLOSURE

UNIVERSAL CARRIER

*SOME VERTICAL SUPPORTS AND HANGER WIRE OMITTED FOR CLARITY

EXTERIOR INSTALLATION

HunterDouglas
Architectural

5015 Oakbrook Parkway, Suite 100
Norcross, GA 30093
T 800.366.4327
F 770.806.0214
HDarchitectural.com

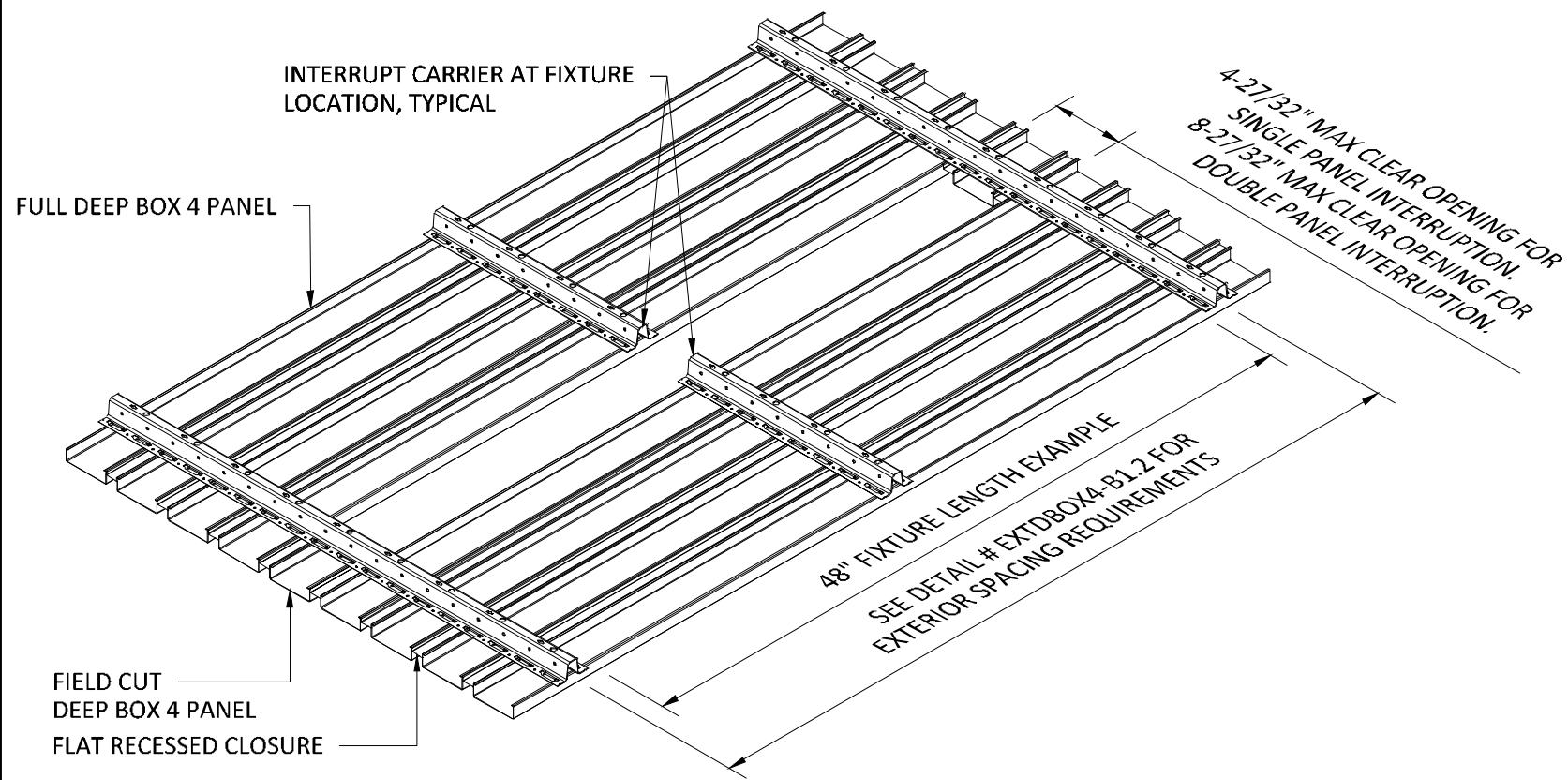
*All rights reserved. This
drawing is the property
of Hunter Douglas. It
may not be copied or
multiplied, neither
wholly nor partly. It may
not be submitted for
perusal to third parties.*

SPECIFICATIONS
(unless noted otherwise)

MATERIAL: .025" | .032" | .040" ALUMINUM DEEP BOX 4 PANEL | .040" ALUMINUM
UNIVERSAL CARRIER
FINISH: PAINT | POWDER COAT | DECORATED WOOD FINISH | LUXACOTE
PERFORATION: NOT AVAILABLE

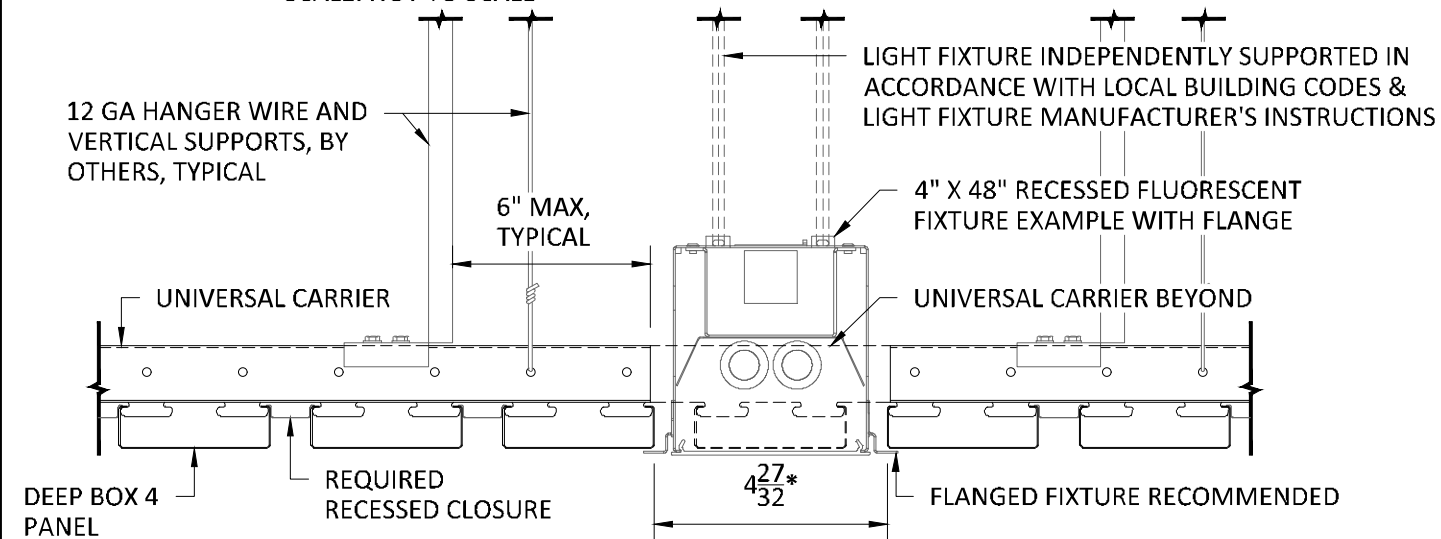
2 1/8" FLOATING 'J' TRIM

PROJECT: LINEAR EXTERIOR DEEP BOX 4 PRODUCT SPECIFICATIONS
DRAWING NUMBER: DEEP BOX4-B1.8
SCALE: AS SHOWN
DRAWN BY: HDA ENGINEERING
DATE: 12/5/16



TYPICAL ISOMETRIC

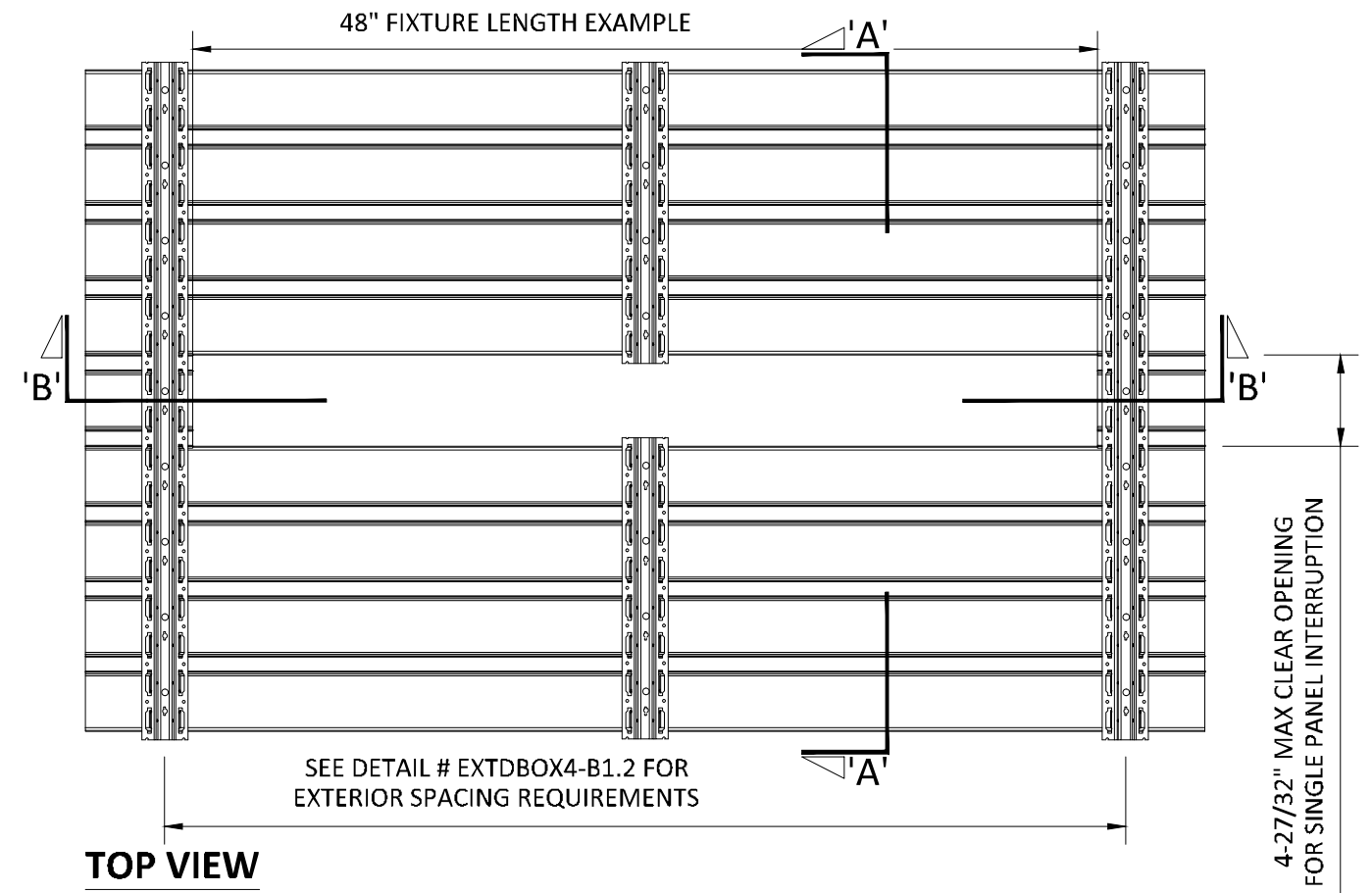
SCALE: NOT TO SCALE



SECTION 'A'

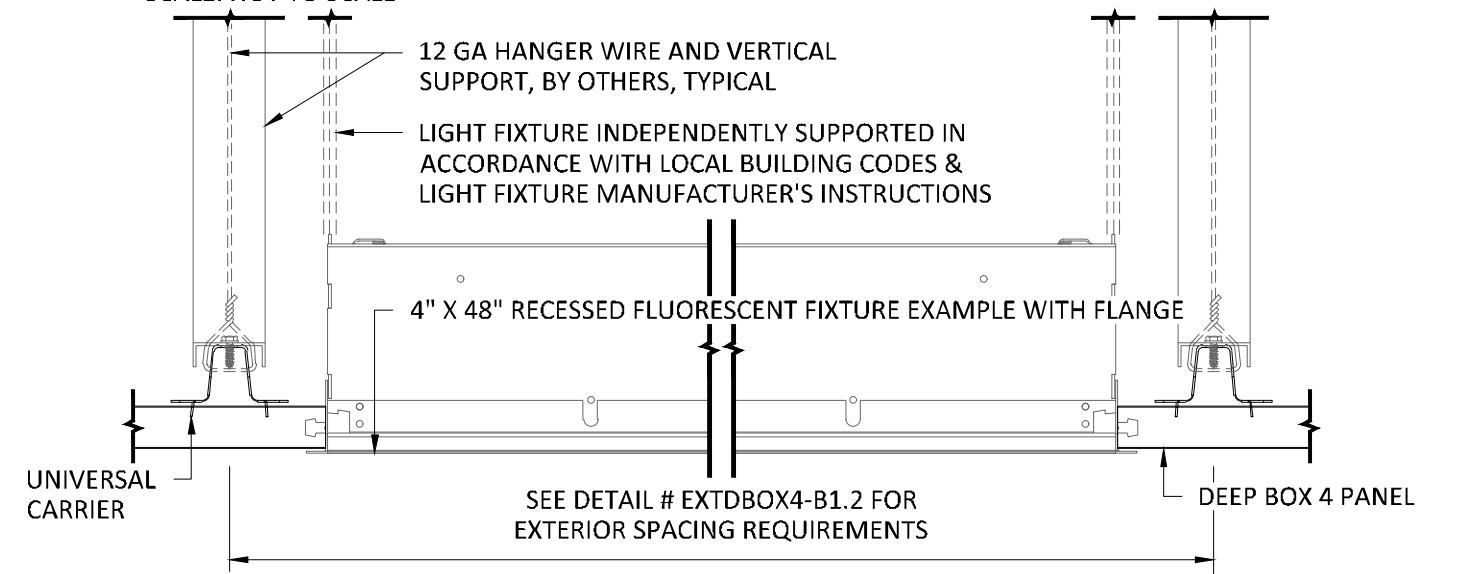
SCALE: 3" = 1'-0"

*4-27/32" MAX CLEAR OPENING, PANEL EDGE TO PANEL EDGE, FOR SINGLE PANEL INTERRUPTION.
8-27/32" MAX CLEAR OPENING, PANEL EDGE TO PANEL EDGE, FOR DOUBLE PANEL INTERRUPTION.



TOP VIEW

SCALE: NOT TO SCALE



SECTION 'B'

SCALE: 3" = 1'-0"

NOTE: FIXTURE WITH TRIM FLANGE NOT BY HUNTER DOUGLAS

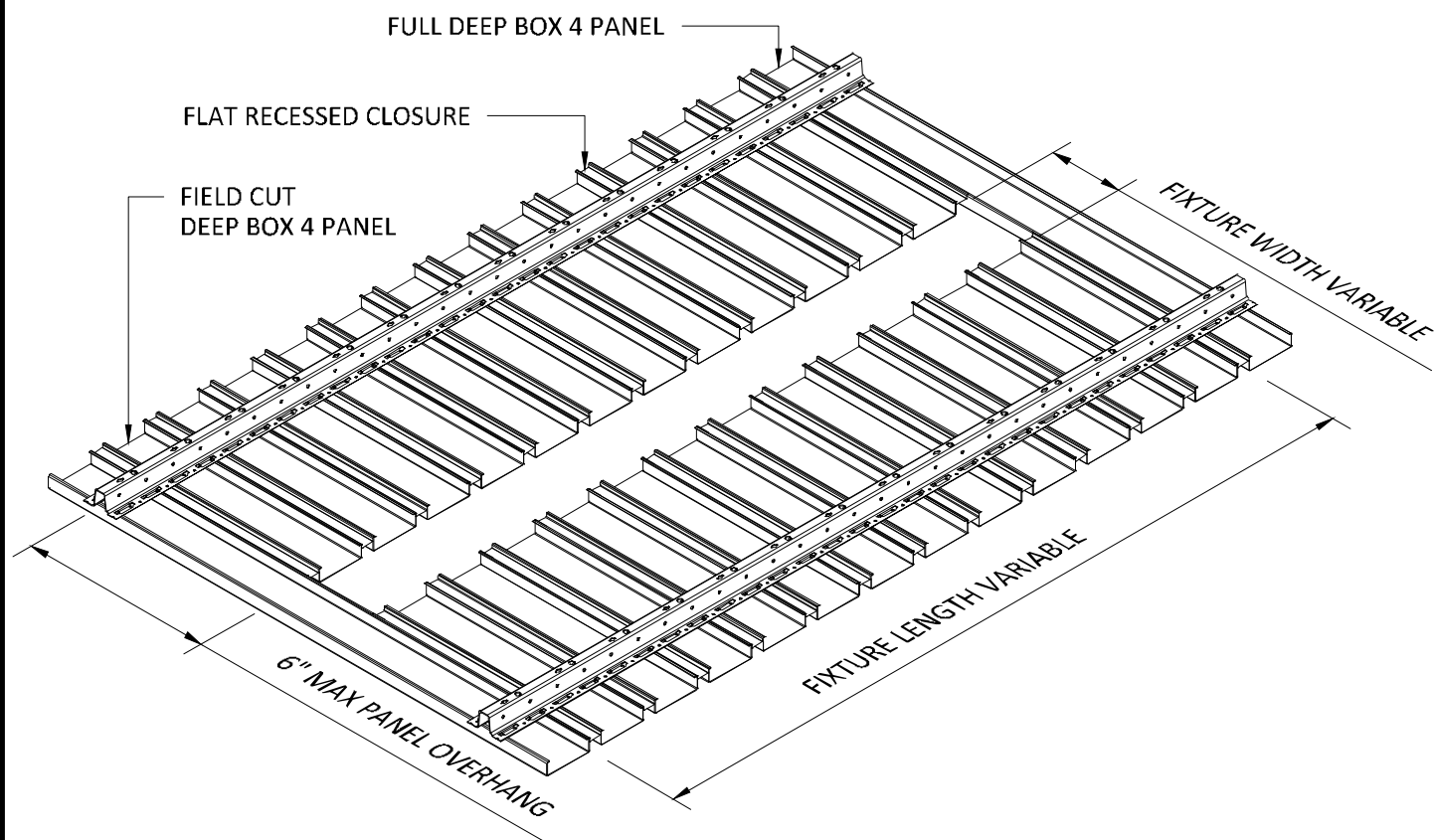
SPECIFICATIONS

(unless noted otherwise)

MATERIAL: .025" | .032" | .040" ALUMINUM DEEP BOX 4 PANEL | .040" ALUMINUM
UNIVERSAL CARRIER
FINISH: PAINT | POWDER COAT | DECORATED WOOD FINISH | LUXACOTE
PERFORATION: NOT AVAILABLE

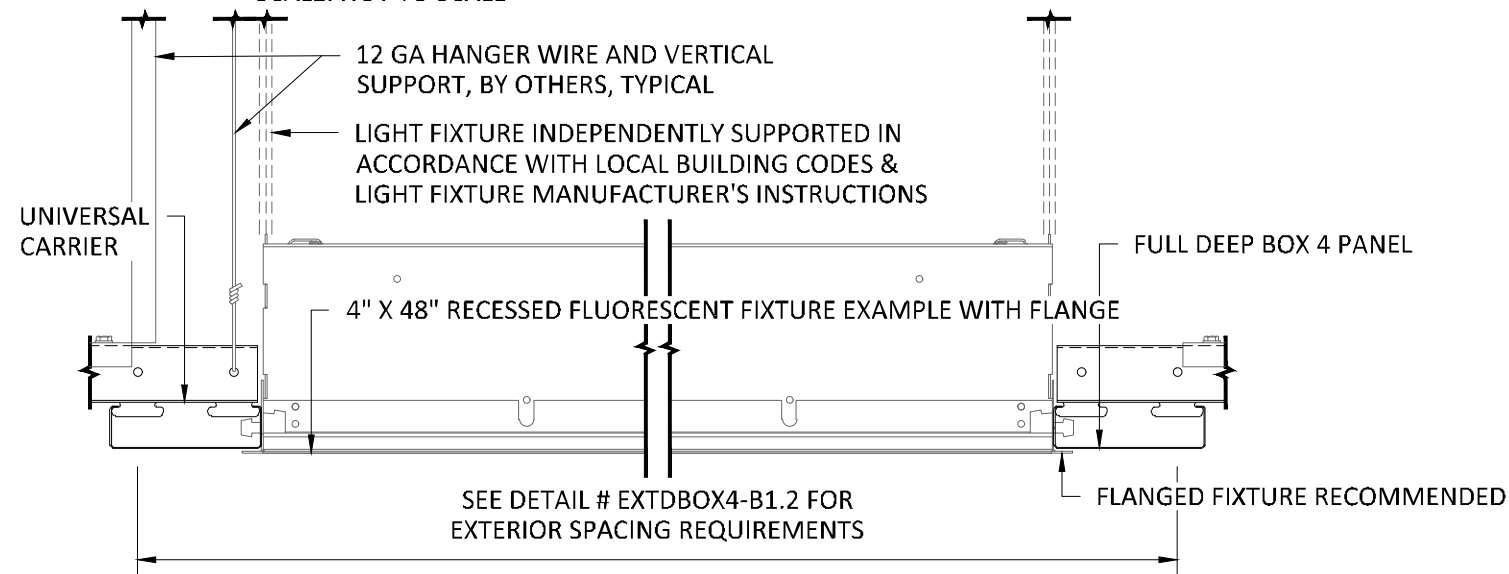
INTERRUPTED PANEL FOR TYPICAL FIXTURE

PROJECT: LINEAR EXTERIOR DEEP BOX 4 PRODUCT SPECIFICATIONS
DRAWING NUMBER: DEEP BOX4-B1.9
SCALE: AS SHOWN
DRAWN BY: HDA ENGINEERING
DATE: 12/5/16



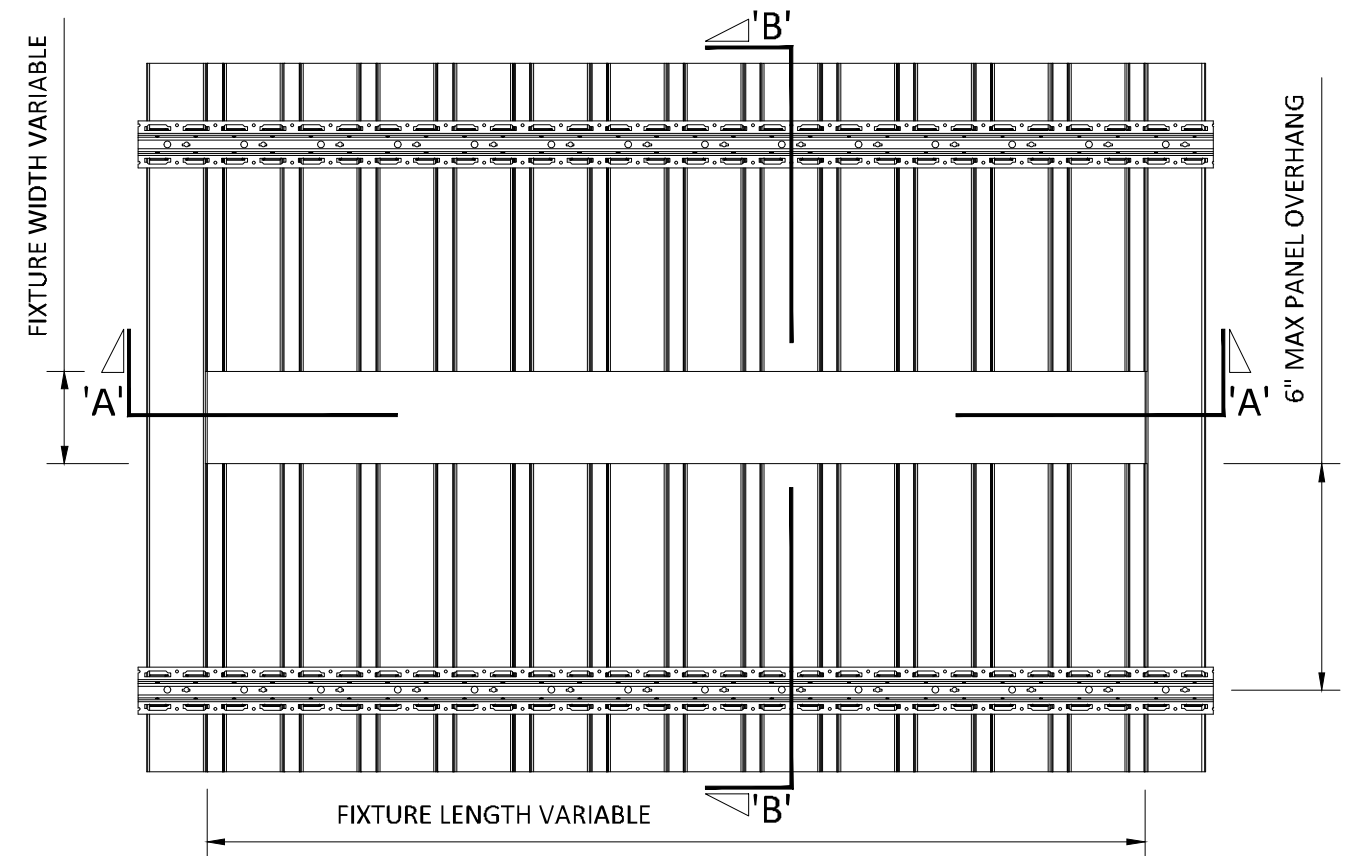
TYPICAL ISOMETRIC

SCALE: NOT TO SCALE



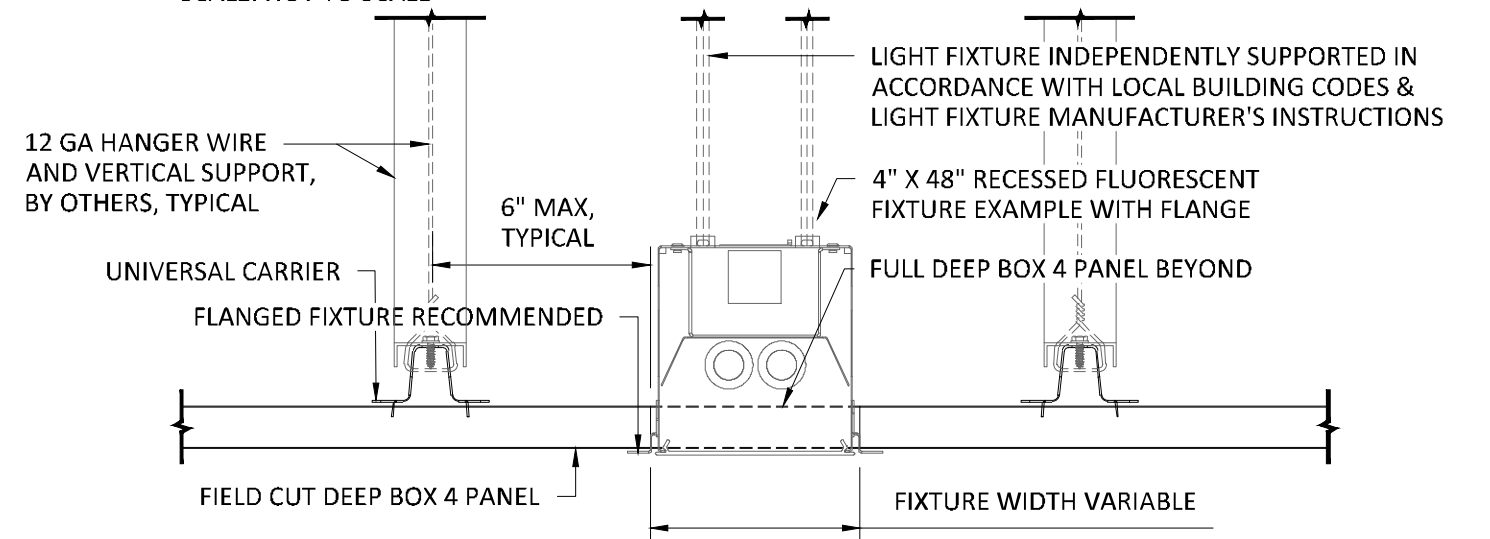
SECTION 'A'

SCALE: 3" = 1'-0"



TOP VIEW

SCALE: NOT TO SCALE



SECTION 'B'

SCALE: 3" = 1'-0"

NOTE: FIXTURE WITH TRIM FLANGE NOT BY HUNTER DOUGLAS

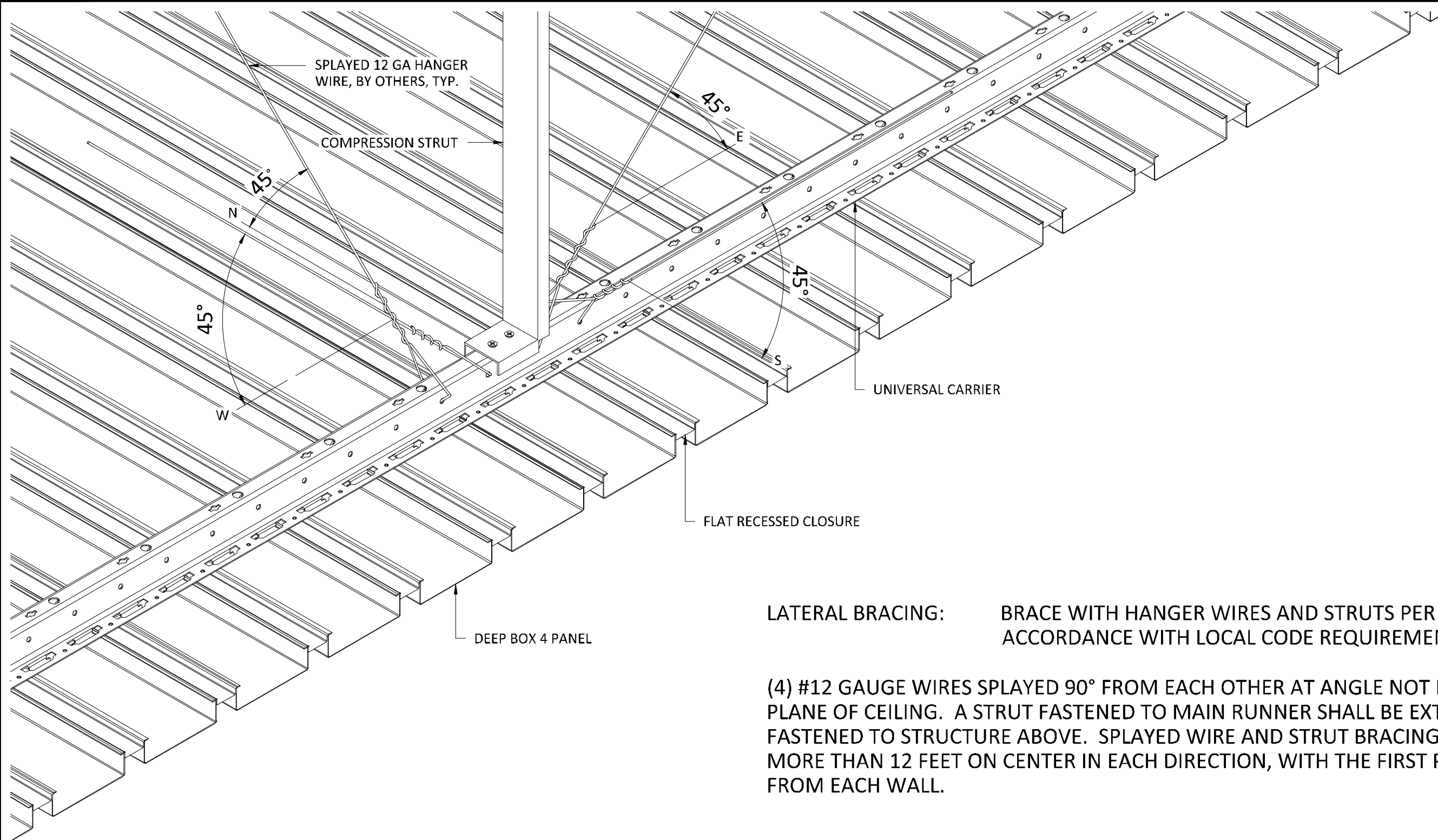
SPECIFICATIONS

(unless noted otherwise)

MATERIAL: .025" | .032" | .040" ALUMINUM DEEP BOX 4 PANEL | .040" ALUMINUM
UNIVERSAL CARRIER
FINISH: PAINT | POWDER COAT | DECORATED WOOD FINISH | LUXACOTE
PERFORATION: NOT AVAILABLE

FIELD CUT PANEL FOR TYPICAL FIXTURE

PROJECT: LINEAR EXTERIOR DEEP BOX 4 PRODUCT SPECIFICATIONS
DRAWING NUMBER: DEEP BOX4-B1.10
SCALE: AS SHOWN
DRAWN BY: HDA ENGINEERING
DATE: 12/5/16



LATERAL BRACING: BRACE WITH HANGER WIRES AND STRUTS PER ASTM E-580 AND IN ACCORDANCE WITH LOCAL CODE REQUIREMENTS.

(4) #12 GAUGE WIRES SPLAYED 90° FROM EACH OTHER AT ANGLE NOT EXCEEDING 45° FROM PLANE OF CEILING. A STRUT FASTENED TO MAIN RUNNER SHALL BE EXTENDED TO AND FASTENED TO STRUCTURE ABOVE. SPLAYED WIRE AND STRUT BRACING TO BE PLACED NOT MORE THAN 12 FEET ON CENTER IN EACH DIRECTION, WITH THE FIRST POINT WITHIN 6 FEET FROM EACH WALL.

EXTERIOR INSTALLATION



5015 Oakbrook Parkway, Suite 100
Norcross, GA 30093
T 800.366.4327
F 770.806.0214
HDarchitectural.com

All rights reserved. This drawing is the property of Hunter Douglas. It may not be copied or multiplied, neither wholly nor partly. It may not be submitted for perusal to third parties.

SPECIFICATIONS (unless noted otherwise)

MATERIAL: .025" | .032" | .040" ALUMINUM DEEP BOX 4 PANEL | .040" ALUMINUM
UNIVERSAL CARRIER
FINISH: PAINT | POWDER COAT | DECORATED WOOD FINISH | LUXACOTE
PERFORATION: NOT AVAILABLE

SEISMIC SPECIFICATION

PROJECT: LINEAR EXTERIOR DEEP BOX 4 PRODUCT SPECIFICATIONS
DRAWING NUMBER: DEEP BOX4-B1.11
SCALE: AS SHOWN
DRAWN BY: HDA ENGINEERING
DATE: 12/5/16