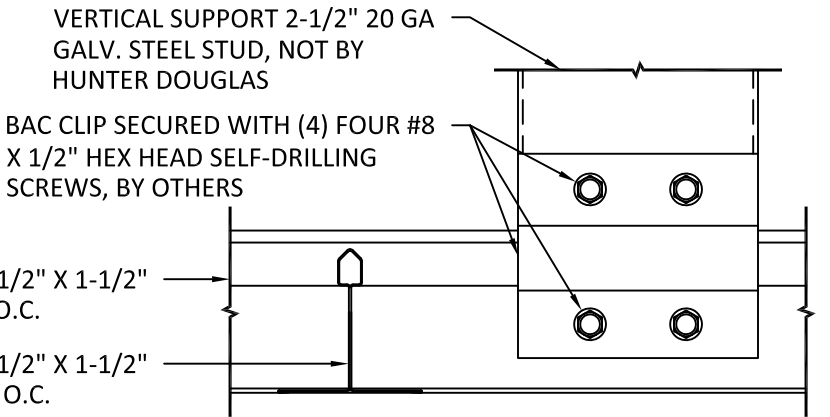
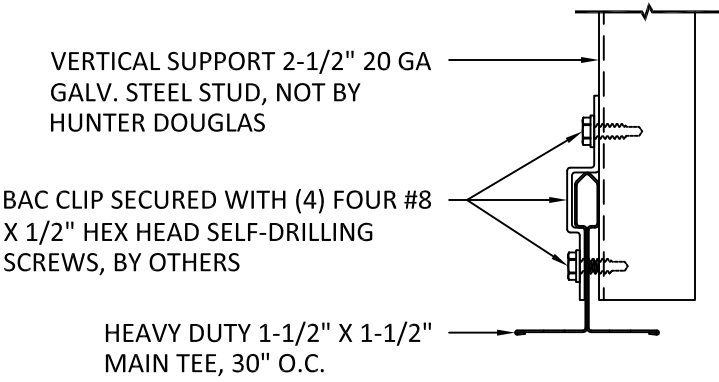


ALLOWABLE DESIGN WIND PRESSURE TORSION SPRING EXTERIOR CEILING SYSTEM		
30" X 30" X .050" ALUMINUM PANEL HEAVY DUTY 1-1/2" X 1-1/2" MAIN TEE SPACING: 30" O.C. VERTICAL SUPPORT 2-1/2" STE 20 GA GALV. STEEL STUD, MAX LENGTH 7'-1"		
STRUT SPACING ALONG MAIN TEE	ALLOWABLE DESIGN WIND PRESSURE	
	POSITIVE (UPLIFT) PSF*	NEGATIVE PSF*
24"	35.0	35.0
30"	27.5	27.5
36"	18.5	18.5
* POUNDS PER SQUARE FOOT		






TYPICAL SUSPENSION SECTIONS  
SCALE: 6" = 1'-0"

NOTE:  
ATTACHMENT TO STRUCTURE  
DESIGNED AND PROVIDED BY  
OTHERS, NOT BY HUNTER DOUGLAS

HunterDouglasContract

CEILINGS  
5015 Oakbrook Parkway, Suite 100  
Norcross, GA 30093  
800-366-4327 / 770-806-9557  
fax: 770-806-0214

All rights reserved. This drawing is the property of Hunter Douglas and may not be copied or multiplied neither wholly nor partly. It may not be submitted for perusal to third parties either.  
[www.hunterdouglascontract.com](http://www.hunterdouglascontract.com)

<u>SPECIFICATIONS</u> (unless noted otherwise)		<u>TOLERANCES</u> (unless noted otherwise)	
MATERIAL: .050" ALUMINUM		DECIMAL:	.0 +/- .060 .00 +/- .030 .000 +/- .010
		FRACTIONAL:	+/- $\frac{1}{32}$ "
		ANGULAR:	+/- $\frac{1}{2}^{\circ}$ (.5°)
			
			

30" X 30" TORSION SPRING PANEL EXTERIOR  
SUSPENSION SPECIFICATIONS

PROJECT: EXTERIOR TORSION SPRING  
DRAWING NUMBER: TS-EXT-2.1 (SHEET 1 OF 3)  
PART NUMBER:  
SCALE: AS SHOWN  
DATE: 5/9/14  
DRAWN BY: HDAP ENGINEERING