

INTERIOR INSTALLATION

*1-1/2" X 6-3/8" BEAM PROFILE SHOWN, ALL PROFILES SIMILAR



5015 Oakbrook Parkway, Suite 100
Norcross, GA 30093
T 800.366.4327
F 770.806.0214
HDarchitectural.com

All rights reserved. This drawing is the property of Hunter Douglas. It may not be copied or multiplied, neither wholly nor partly. It may not be submitted for perusal to third parties.

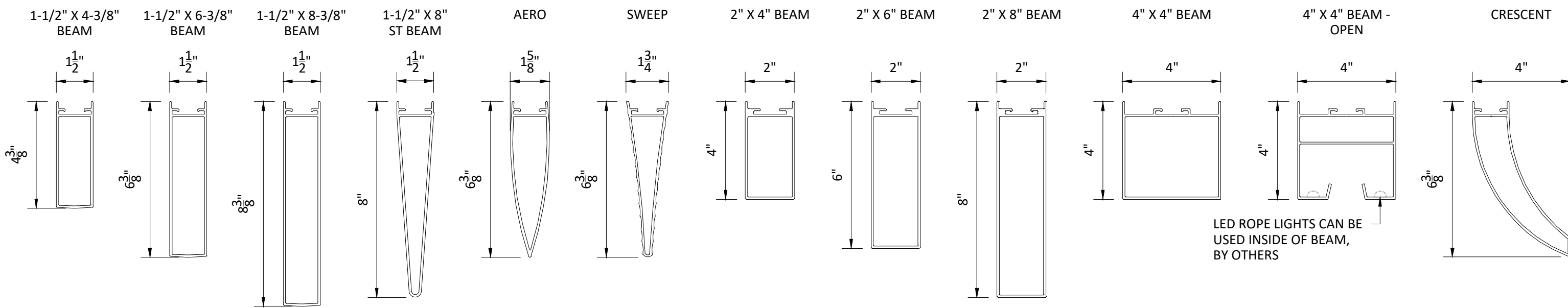
SPECIFICATIONS

(unless noted otherwise)

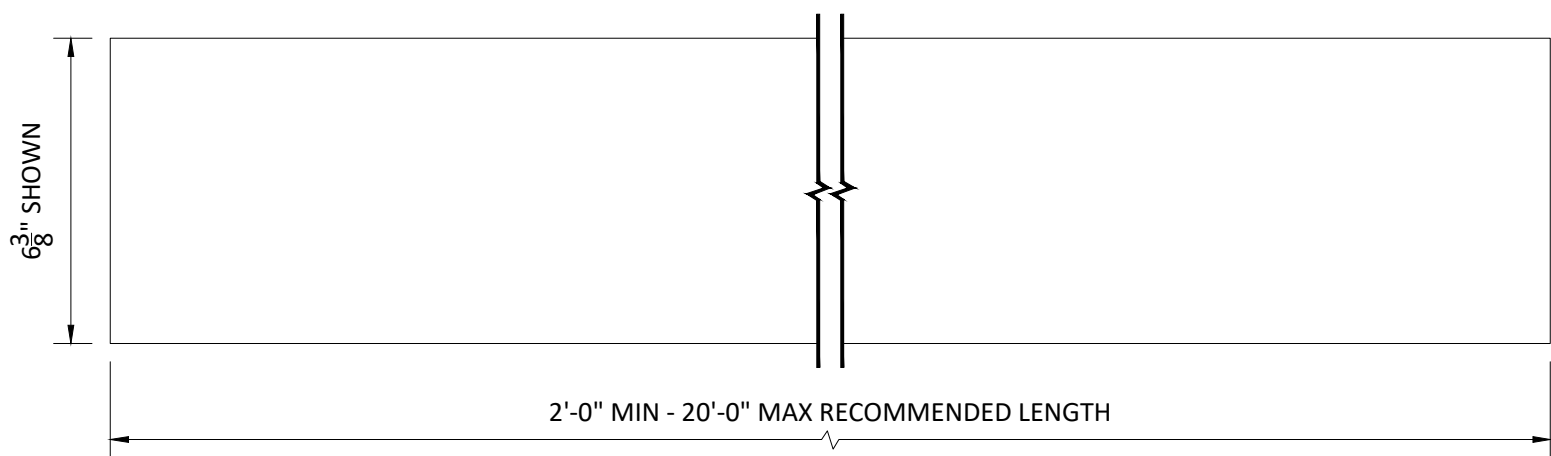
MATERIAL: EXTRUDED ALUMINUM ALLOY 6063-T5
FINISH: PAINT | POWDER COAT | DECORATED WOOD FINISH | WOOD VENEER |
WILSONART LAMINATE
PERFORATION: NOT AVAILABLE

OVERALL ISOMETRIC VIEW

PROJECT: HIGH PROFILE SERIES PRODUCT SPECIFICATIONS
DRAWING NUMBER: HPS-A1.0
SCALE: AS SHOWN
DRAWN BY: HDA ENGINEERING
DATE: 9/8/17



LED ROPE LIGHTS CAN BE USED INSIDE OF BEAM, BY OTHERS



BAFFLE PROFILES & SIZES
SCALE: 3" = 1'-0"

BAFFLE PROFILES & SIZES

CUSTOM SIZES AVAILABLE:
1-1/2" OR 2" WIDTH UP TO 8" HEIGHT
1-1/2" TO 4" WIDTH UP TO 6" HEIGHT
CONTACT HUNTER DOUGLAS

BAFFLE MATERIAL

EXTRUDED ALUMINUM ALLOY 6063-T5

BAFFLE FINISHES

- PAINTED & POWDER COATED
- DECORATED WOOD FINISH (POWDER COATED)
- WOOD VENEER (PROFILE SPECIFIC, CONTACT HUNTER DOUGLAS)
- WILSONART LAMINATE (PROFILE SPECIFIC, CONTACT HUNTER DOUGLAS)

PERFORATIONS

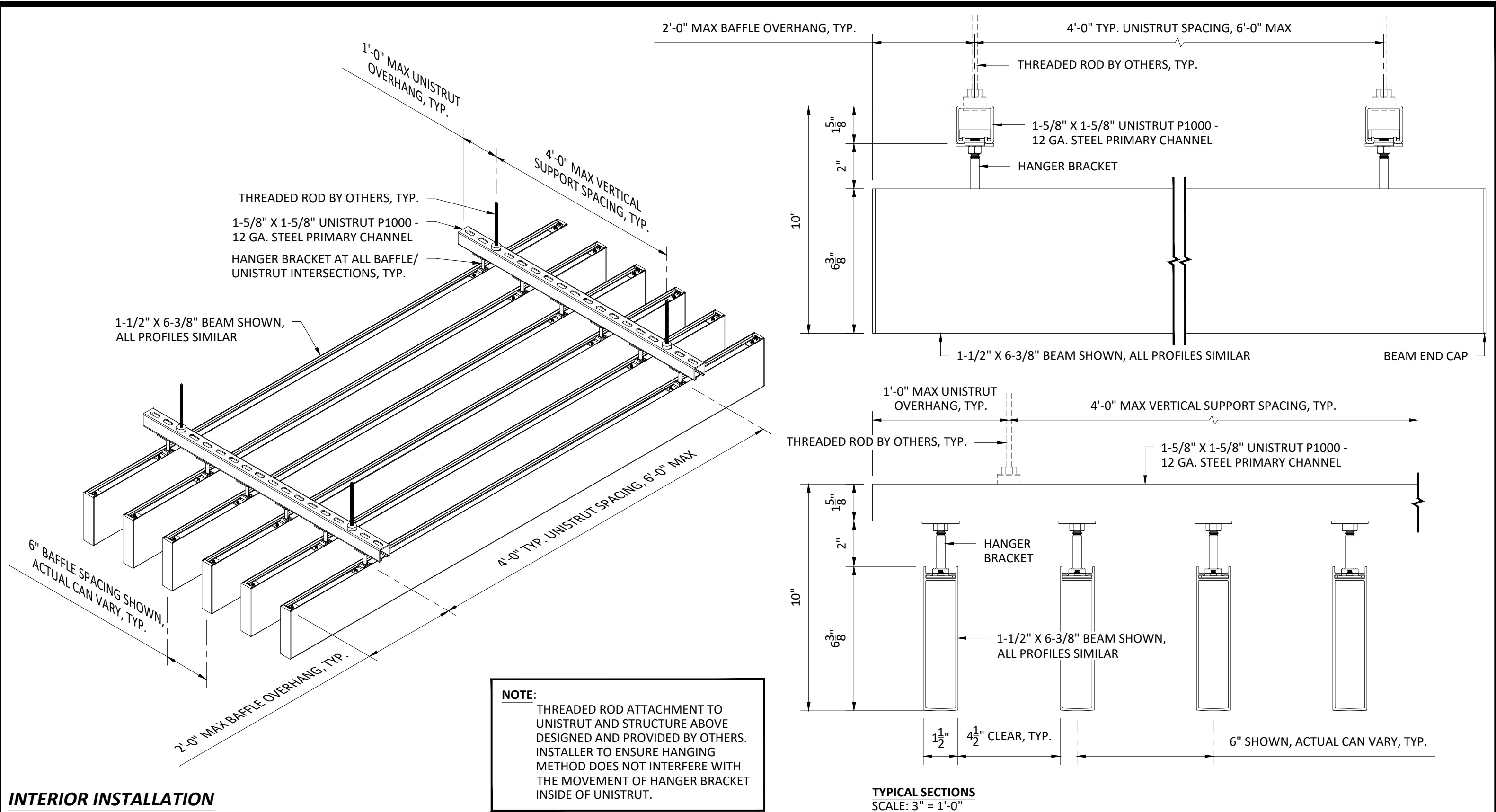
BAFFLES CANNOT BE PERFORATED

SPECIFICATIONS
(unless noted otherwise)

MATERIAL: EXTRUDED ALUMINUM ALLOY 6063-T5
FINISH: PAINT | POWDER COAT | DECORATED WOOD FINISH | WOOD VENEER | WILSONART LAMINATE
PERFORATION: NOT AVAILABLE

BAFFLE SPECIFICATIONS

PROJECT: HIGH PROFILE SERIES PRODUCT SPECIFICATIONS
DRAWING NUMBER: HPS-A1.1
SCALE: AS SHOWN
DRAWN BY: HDA ENGINEERING
DATE: 5/22/18



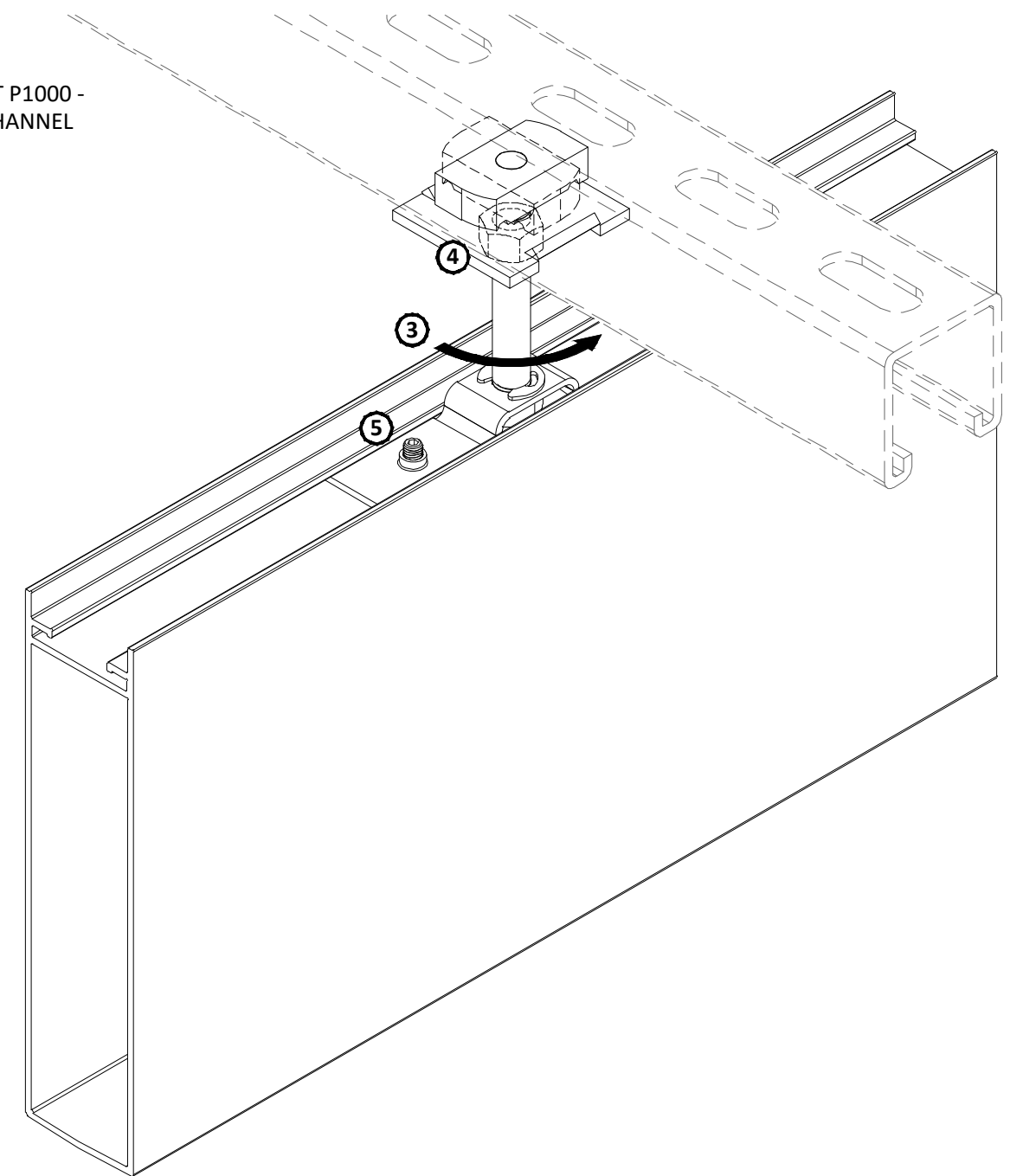
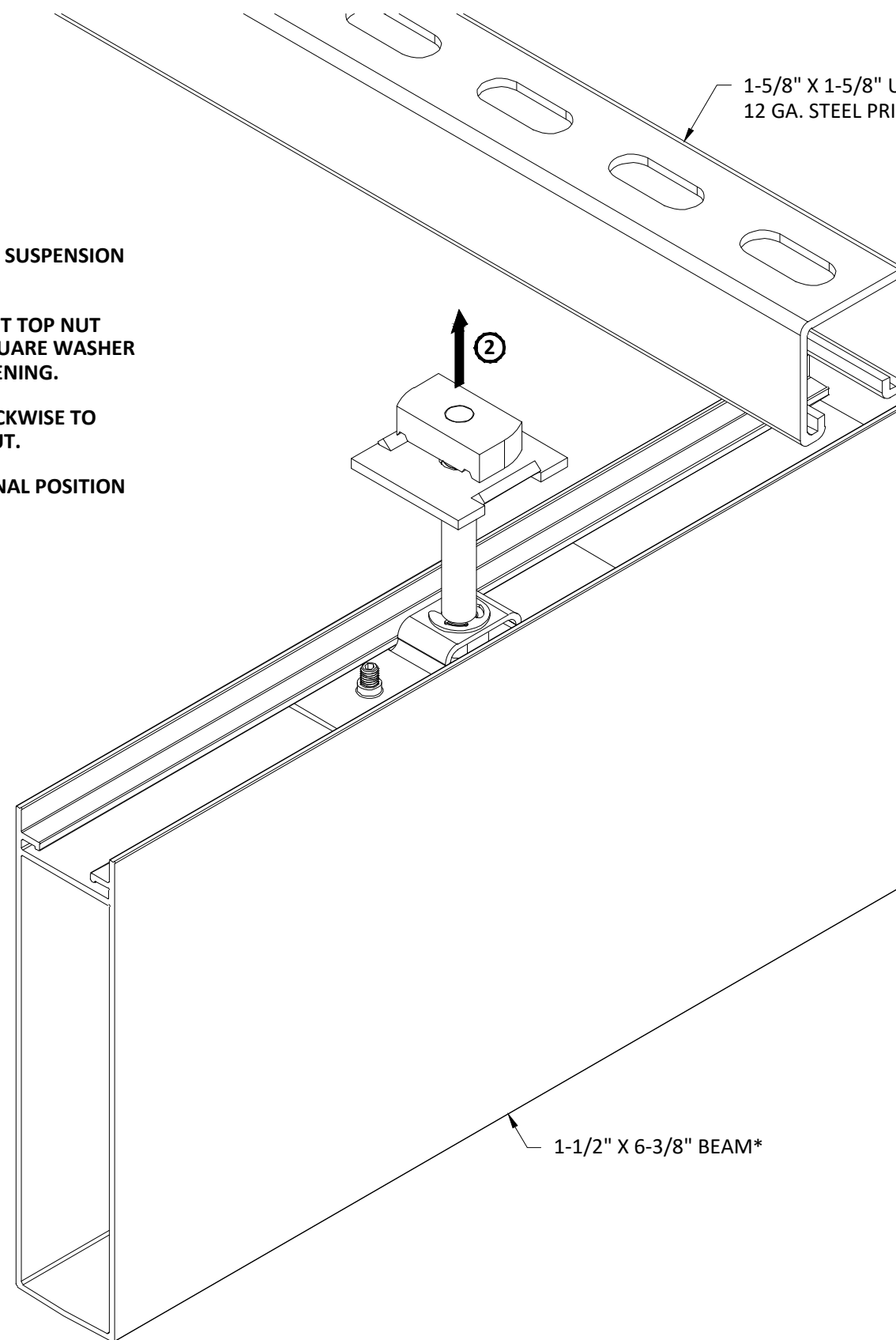
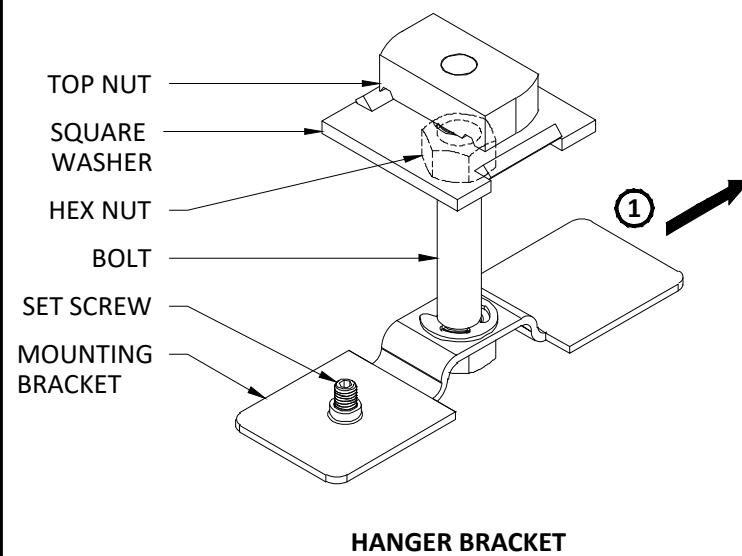
SPECIFICATIONS
(unless noted otherwise)

MATERIAL: EXTRUDED ALUMINUM ALLOY 6063-T5
FINISH: PAINT | POWDER COAT | DECORATED WOOD FINISH | WOOD VENEER |
WILSONART LAMINATE
PERFORATION: NOT AVAILABLE

SUSPENSION SPECIFICATIONS

PROJECT: HIGH PROFILE SERIES PRODUCT SPECIFICATIONS
DRAWING NUMBER: HPS-A1.2
SCALE: AS SHOWN
DRAWN BY: HDA ENGINEERING
DATE: 9/8/17

- ① SLIDE MOUNTING BRACKET INTO SUSPENSION SLOT OF BAFFLE.*
- ② LIFT BEAM ASSEMBLY AND INSERT TOP NUT INTO UNISTRUT AND ENSURE SQUARE WASHER TABS ALIGN WITH UNISTRUT OPENING.
- ③ ROTATE BOLT 90° COUNTER-CLOCKWISE TO ENGAGE TOP NUT WITH UNISTRUT.
- ④ SLIDE BAFFLE ASSEMBLY INTO FINAL POSITION AND TIGHTEN HEX NUT.
- ⑤ TIGHTEN SET SCREW.



*1-1/2" X 6-3/8" BEAM PROFILE SHOWN, ALL PROFILES SIMILAR
**VERTICAL SUPPORT OMITTED FOR CLARITY

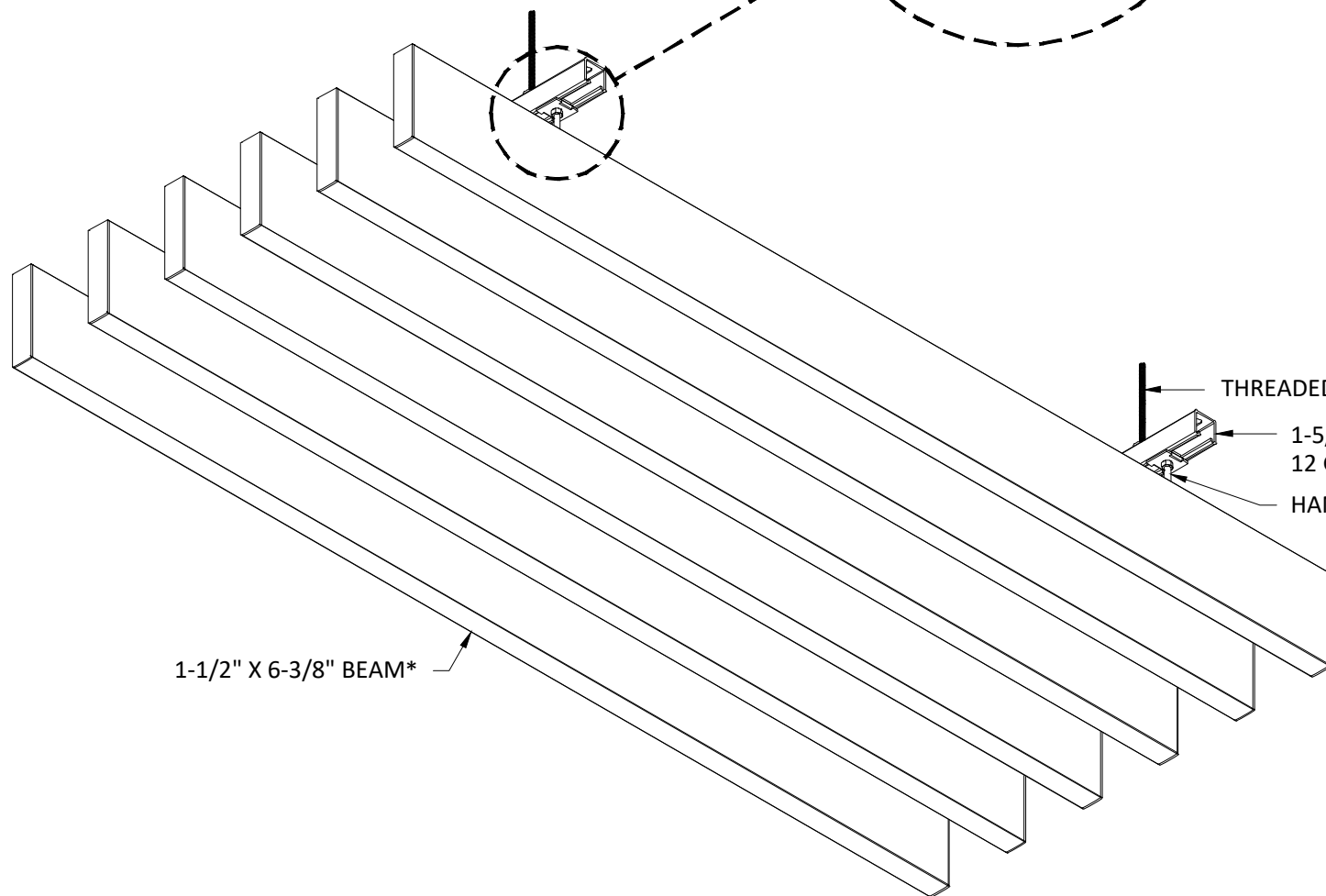
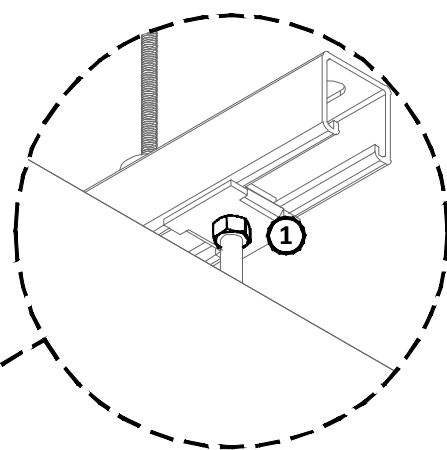
SPECIFICATIONS
(unless noted otherwise)

MATERIAL: EXTRUDED ALUMINUM ALLOY 6063-T5
FINISH: PAINT | POWDER COAT | DECORATED WOOD FINISH | WOOD VENEER |
WILSONART LAMINATE
PERFORATION: NOT AVAILABLE

HANGER BRACKET INSTALLATION

PROJECT: HIGH PROFILE SERIES PRODUCT SPECIFICATIONS
DRAWING NUMBER: HPS-A1.3
SCALE: NTS
DRAWN BY: HDA ENGINEERING
DATE: 9/8/17

- ① LOOSEN HEX NUT AT ALL HANGER BRACKETS OF BAFFLES* REQUIRED FOR PLENUM ACCESS.
- ② SLIDE BAFFLES EVENLY ALONG UNISTRUT TO ACCESS PLENUM. ENSURE TOP NUT REMAINS ENGAGED WITH UNISTRUT DURING ACCESS.

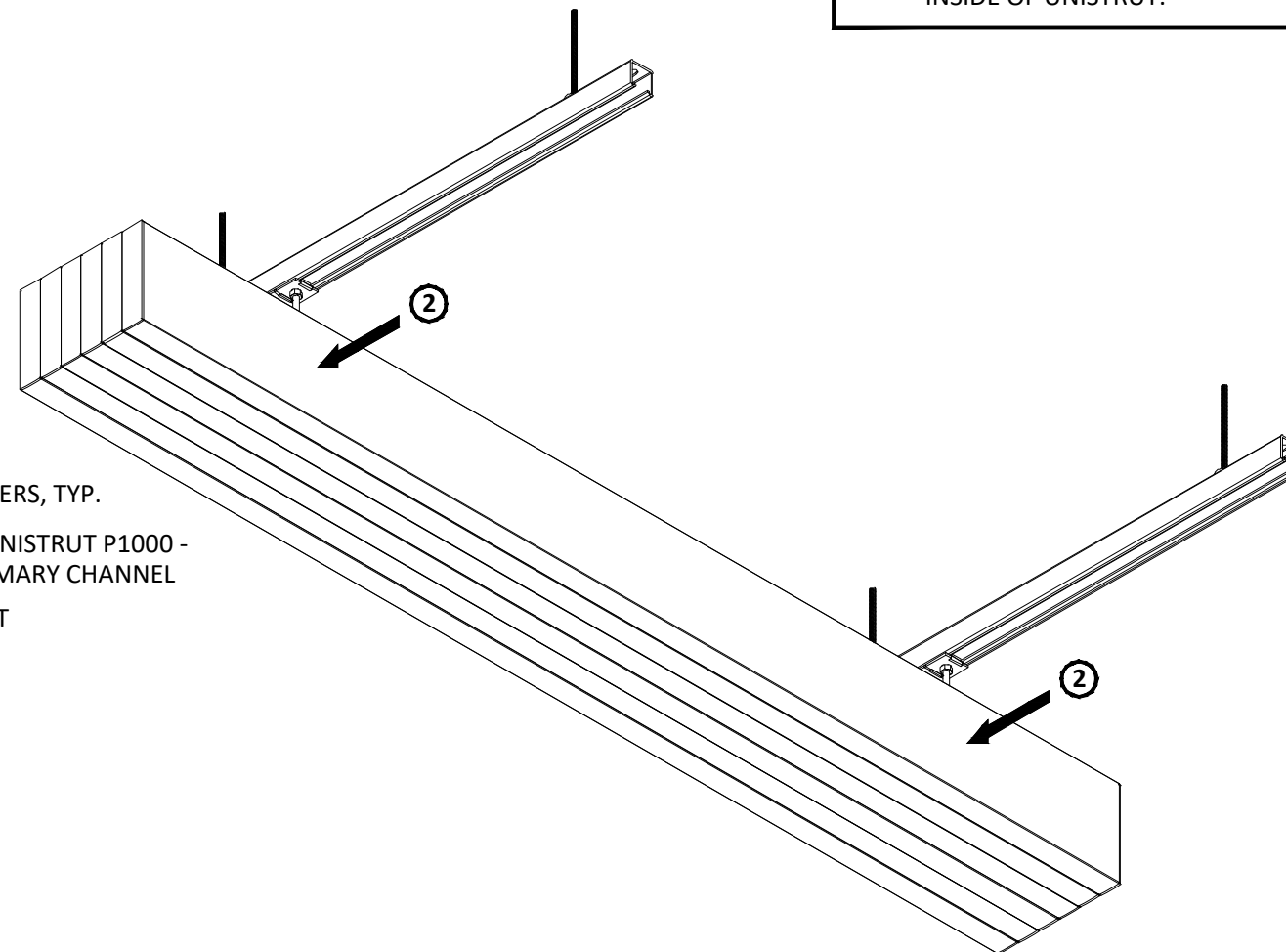


THREADED ROD BY OTHERS, TYP.
1-5/8" X 1-5/8" UNISTRUT P1000 -
12 GA. STEEL PRIMARY CHANNEL
HANGER BRACKET

1-1/2" X 6-3/8" BEAM*

NOTE:
CREATE SMALLEST POSSIBLE OPENING FOR PLENUM ACCESS AND AVOID LARGE CONCENTRATIONS OF STACKED BAFFLES.

NOTE:
THREADED ROD ATTACHMENT TO UNISTRUT AND STRUCTURE ABOVE DESIGNED AND PROVIDED BY OTHERS. INSTALLER TO ENSURE HANGING METHOD DOES NOT INTERFERE WITH THE MOVEMENT OF HANGER BRACKET INSIDE OF UNISTRUT.



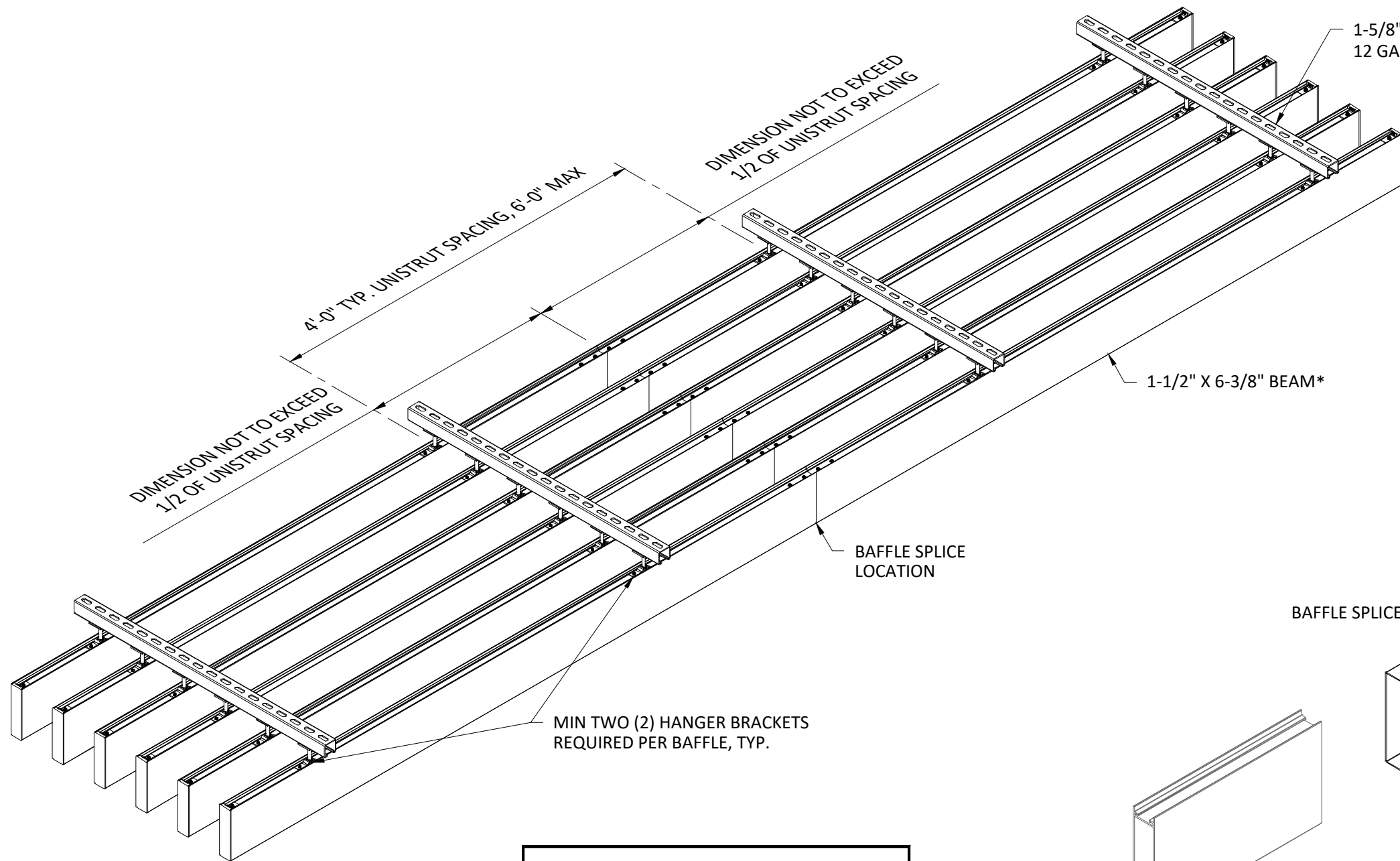
*1-1/2" X 6-3/8" BEAM PROFILE SHOWN, ALL PROFILES SIMILAR

SPECIFICATIONS
(unless noted otherwise)

MATERIAL: EXTRUDED ALUMINUM ALLOY 6063-T5
FINISH: PAINT | POWDER COAT | DECORATED WOOD FINISH | WOOD VENEER |
WILSONART LAMINATE
PERFORATION: NOT AVAILABLE

PLENUM ACCESS

PROJECT: HIGH PROFILE SERIES PRODUCT SPECIFICATIONS
DRAWING NUMBER: HPS-A1.4
SCALE: NTS
DRAWN BY: HDA ENGINEERING
DATE: 9/8/17



1-5/8" X 1-5/8" UNISTRUT P1000 -
12 GA. STEEL PRIMARY CHANNEL

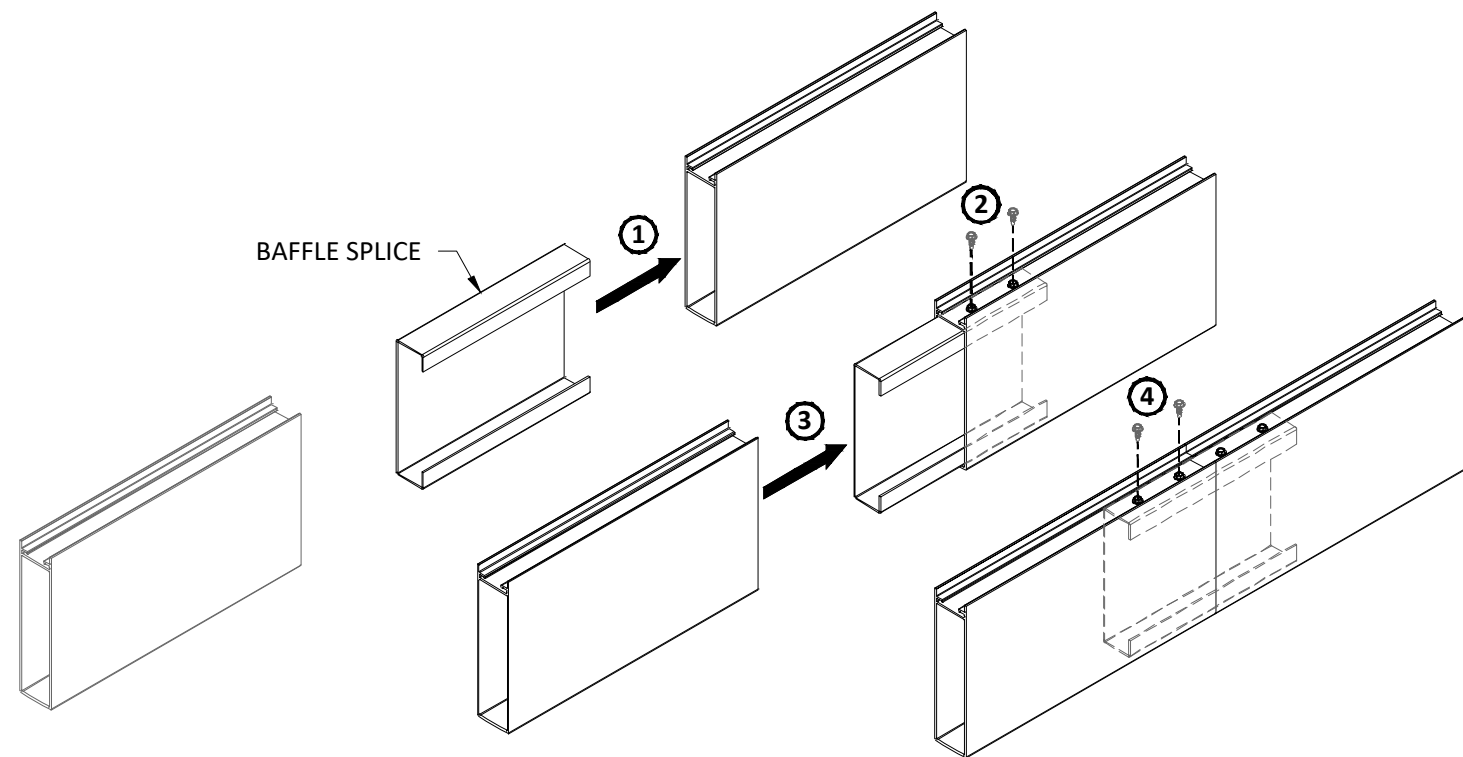
1-1/2" X 6-3/8" BEAM*

BAFFLE SPLICE
LOCATION

MIN TWO (2) HANGER BRACKETS
REQUIRED PER BAFFLE, TYP.

NOTE:
DUE TO BAFFLE SPLICE FASTENERS,
HANGER BRACKETS WILL NOT FIT AT
SPLICE LOCATIONS.

- ① INSERT BAFFLE SPLICE HALFWAY INTO BAFFLE.
- ② SECURE WITH TWO (2) MIN #8 TEK SCREWS (BY OTHERS).
- ③ SLIDE SECOND BAFFLE OVER SPLICE AND TIGHT AGAINST FIRST BAFFLE. ENSURE FINISHED SEAM IS ALIGNED AND FLUSH ON ALL SIDES.
- ④ SECURE REMAINING SIDE WITH TWO (2) MIN #8 TEK SCREWS.



*1-1/2" X 6-3/8" BEAM PROFILE SHOWN, ALL PROFILES SIMILAR
**VERTICAL SUPPORT OMITTED FOR CLARITY

SPECIFICATIONS (unless noted otherwise)

MATERIAL: EXTRUDED ALUMINUM ALLOY 6063-T5
FINISH: PAINT | POWDER COAT | DECORATED WOOD FINISH | WOOD VENEER |
WILSONART LAMINATE
PERFORATION: NOT AVAILABLE

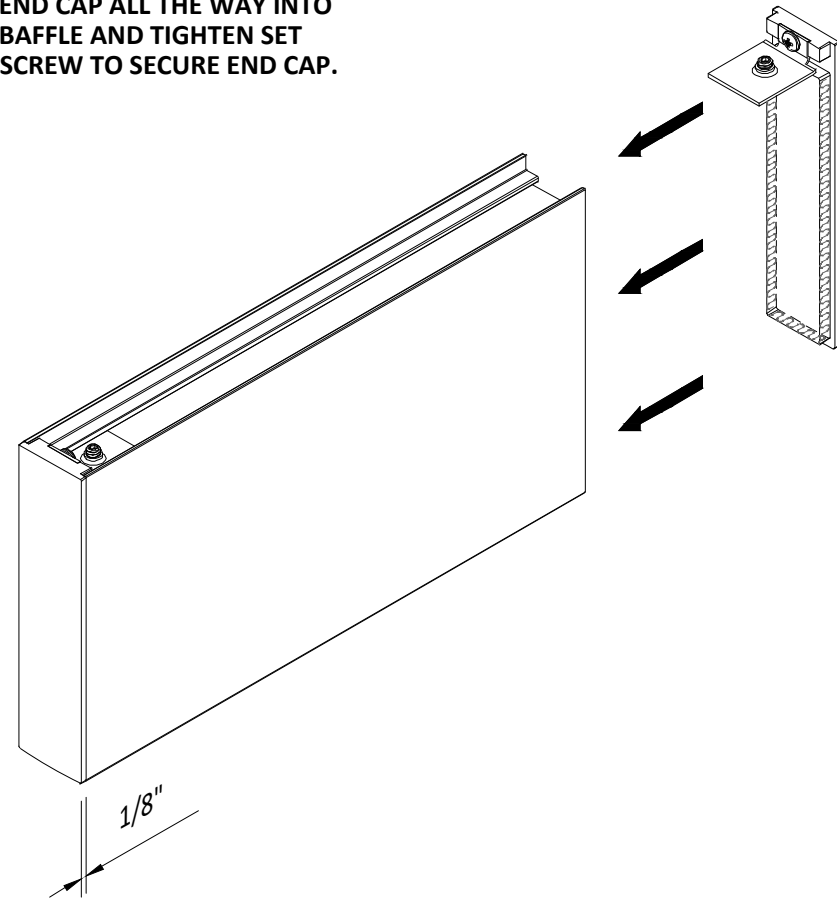
BAFFLE SPLICE INSTALLATION

PROJECT: HIGH PROFILE SERIES PRODUCT SPECIFICATIONS
DRAWING NUMBER: HPS-A1.5
SCALE: NTS
DRAWN BY: HDA ENGINEERING
DATE: 9/8/17

METAL END CAP

PAINTED, POWDER COATED, &
DECORATED WOOD FINISHES

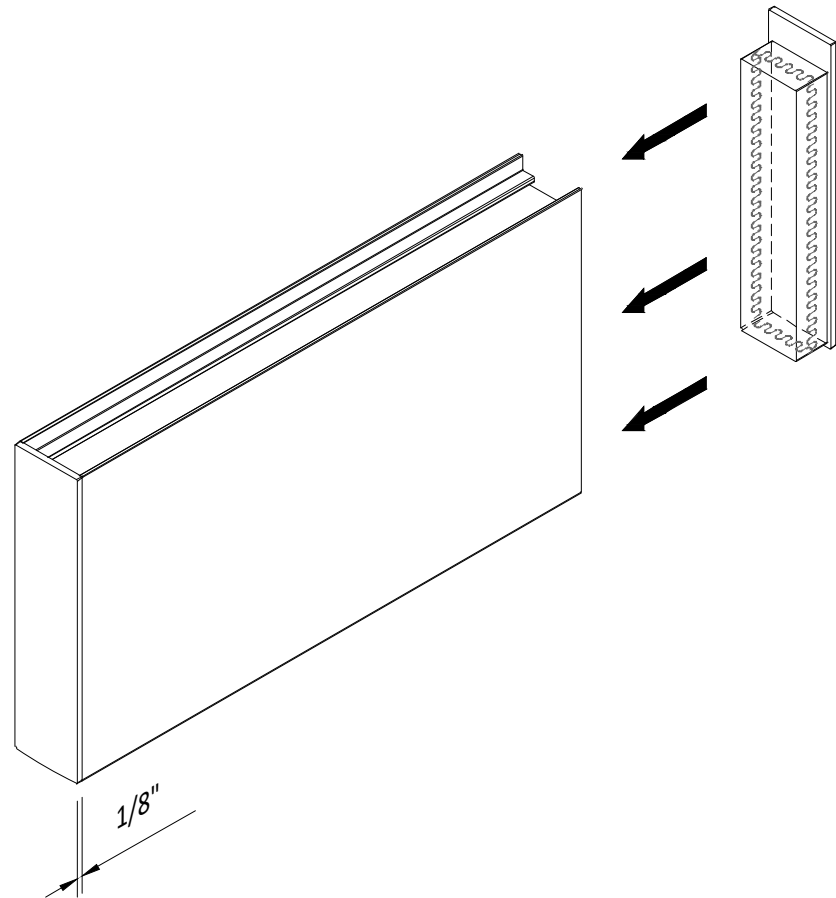
- ① APPLY CONSTRUCTION ADHESIVE ON 3 SIDES SHOWN.
- ② INSERT END CAP INTO BAFFLE AND ENSURE END CAP BRACKET SLIDES INTO SUSPENSION SLOT AT TOP OF BAFFLE.
- ③ APPLY EVEN PRESSURE TO SET END CAP ALL THE WAY INTO BAFFLE AND TIGHTEN SET SCREW TO SECURE END CAP.



WOOD END CAP

WOOD VENEER FINISH (PROFILE SPECIFIC, CONTACT HUNTER DOUGLAS)

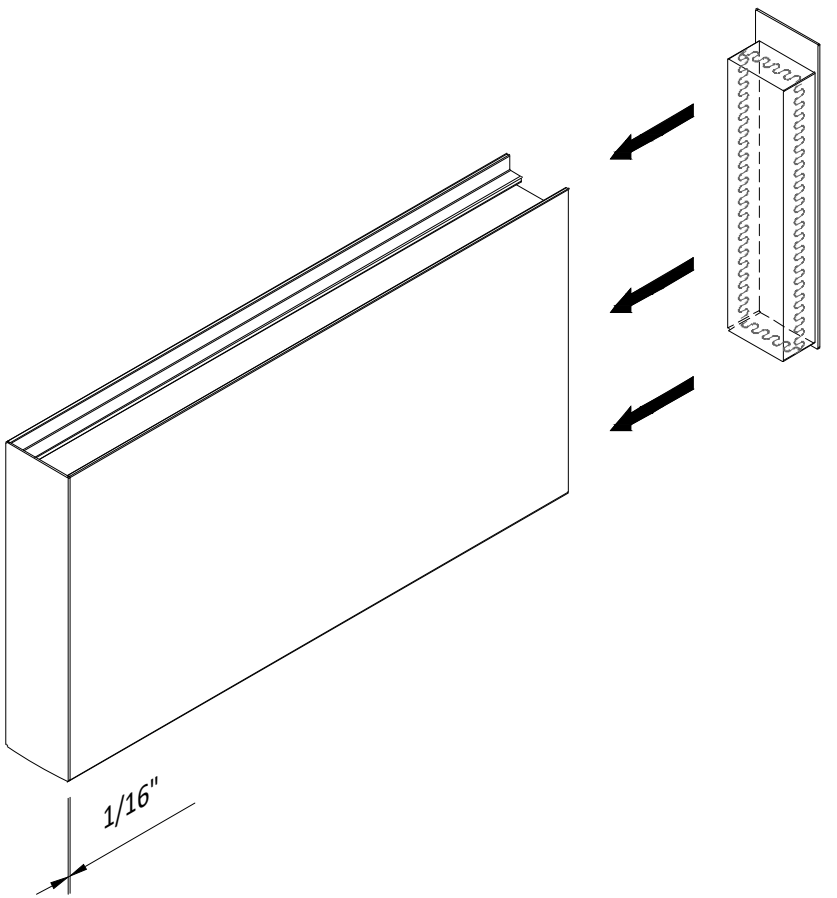
- ① APPLY CONSTRUCTION ADHESIVE TO INTERNAL EDGES OF END CAP.
- ② INSERT END CAP INTO BAFFLE AND REMOVE ANY VISIBLE ADHESIVE. SECURE CAP UNTIL ADHESIVE SETS.



WILSONART END CAP

LAMINATE FINISH (PROFILE SPECIFIC, CONTACT HUNTER DOUGLAS)

- ① APPLY CONSTRUCTION ADHESIVE TO INTERNAL EDGES OF END CAP.
- ② INSERT END CAP INTO BAFFLE AND REMOVE ANY VISIBLE ADHESIVE. SECURE CAP UNTIL ADHESIVE SETS.



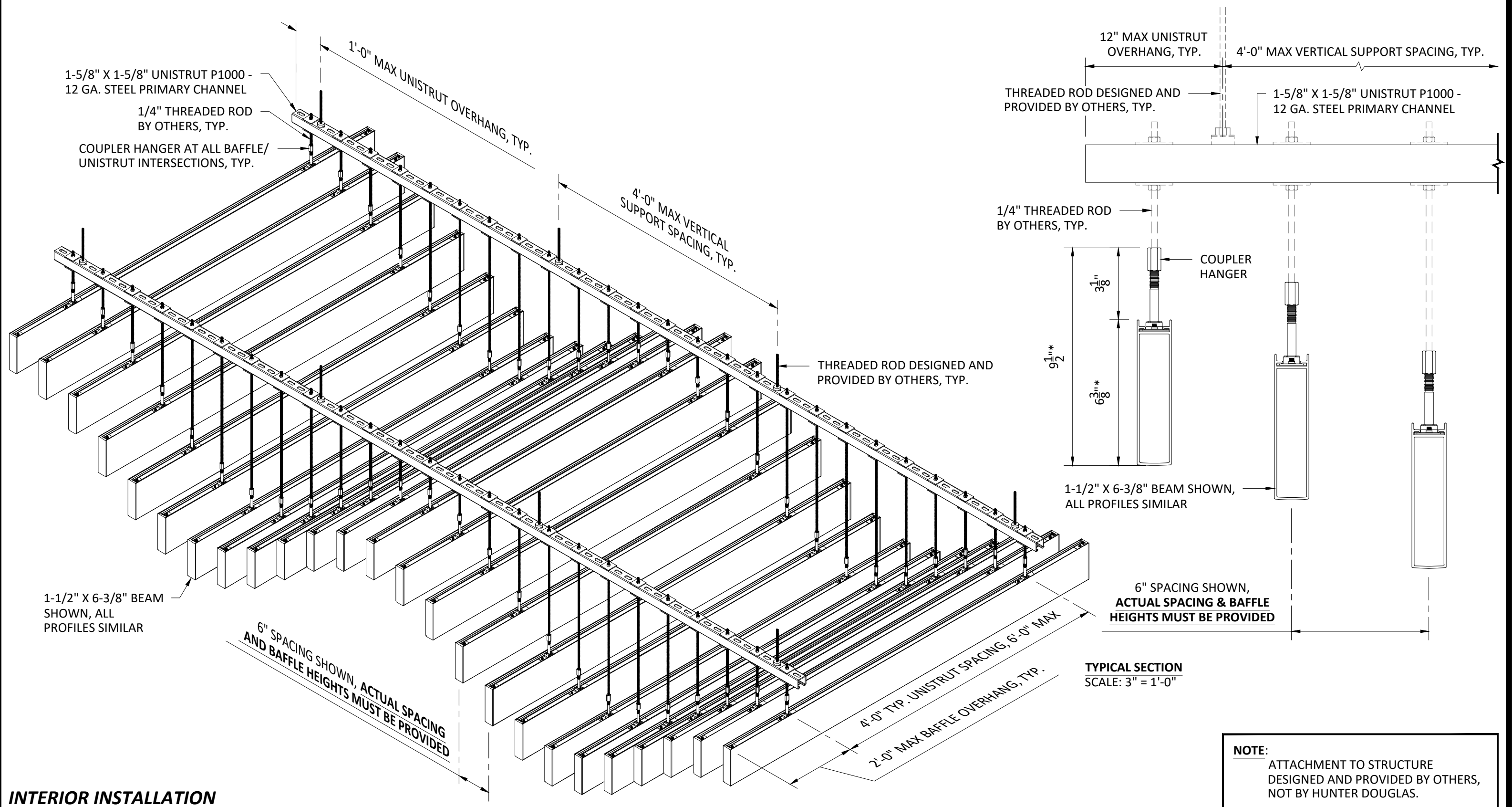
*1-1/2" X 6-3/8" BEAM PROFILE SHOWN, ALL PROFILES SIMILAR

SPECIFICATIONS
(unless noted otherwise)

MATERIAL: EXTRUDED ALUMINUM ALLOY 6063-T5
FINISH: PAINT | POWDER COAT | DECORATED WOOD FINISH | WOOD VENEER |
WILSONART LAMINATE
PERFORATION: NOT AVAILABLE

END CAP INSTALLATION

PROJECT: HIGH PROFILE SERIES PRODUCT SPECIFICATIONS
DRAWING NUMBER: HPS-A1.6
SCALE: NOT TO SCALE
DRAWN BY: HDA ENGINEERING
DATE: 9/8/17



INTERIOR INSTALLATION



5015 Oakbrook Parkway, Suite 100
Norcross, GA 30093
T 800.366.4327
F 770.806.0214
HDarchitectural.com

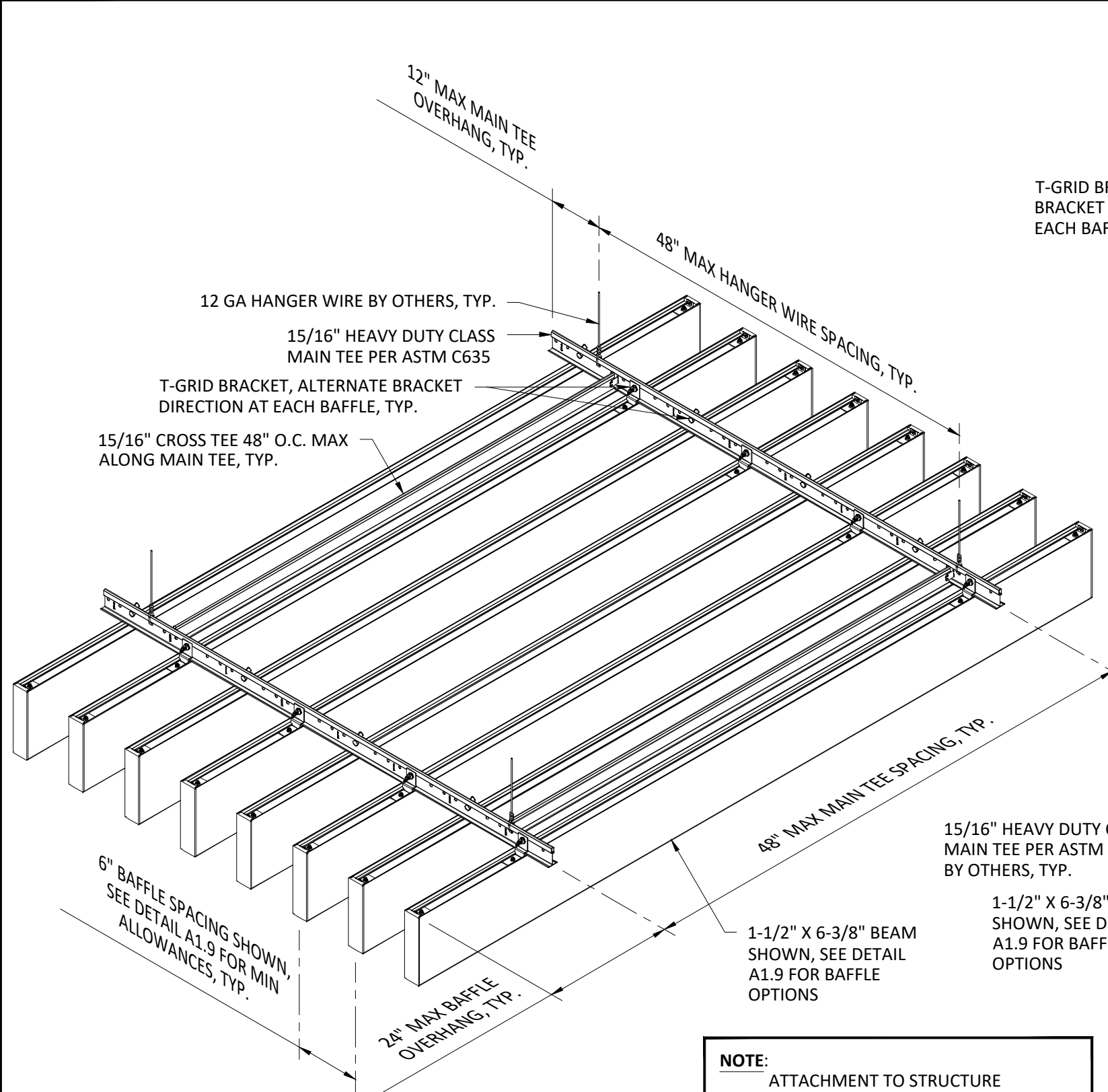
All rights reserved. This drawing is the property of Hunter Douglas. It may not be copied or multiplied, neither wholly nor partly. It may not be submitted for perusal to third parties.

SPECIFICATIONS (unless noted otherwise)

MATERIAL: EXTRUDED ALUMINUM ALLOY 6063-T5
FINISH: PAINT | POWDER COAT | DECORATED WOOD FINISH | WOOD VENEER |
WILSONART LAMINATE
PERFORATION: NOT AVAILABLE

COUPLER HANGER OPTION

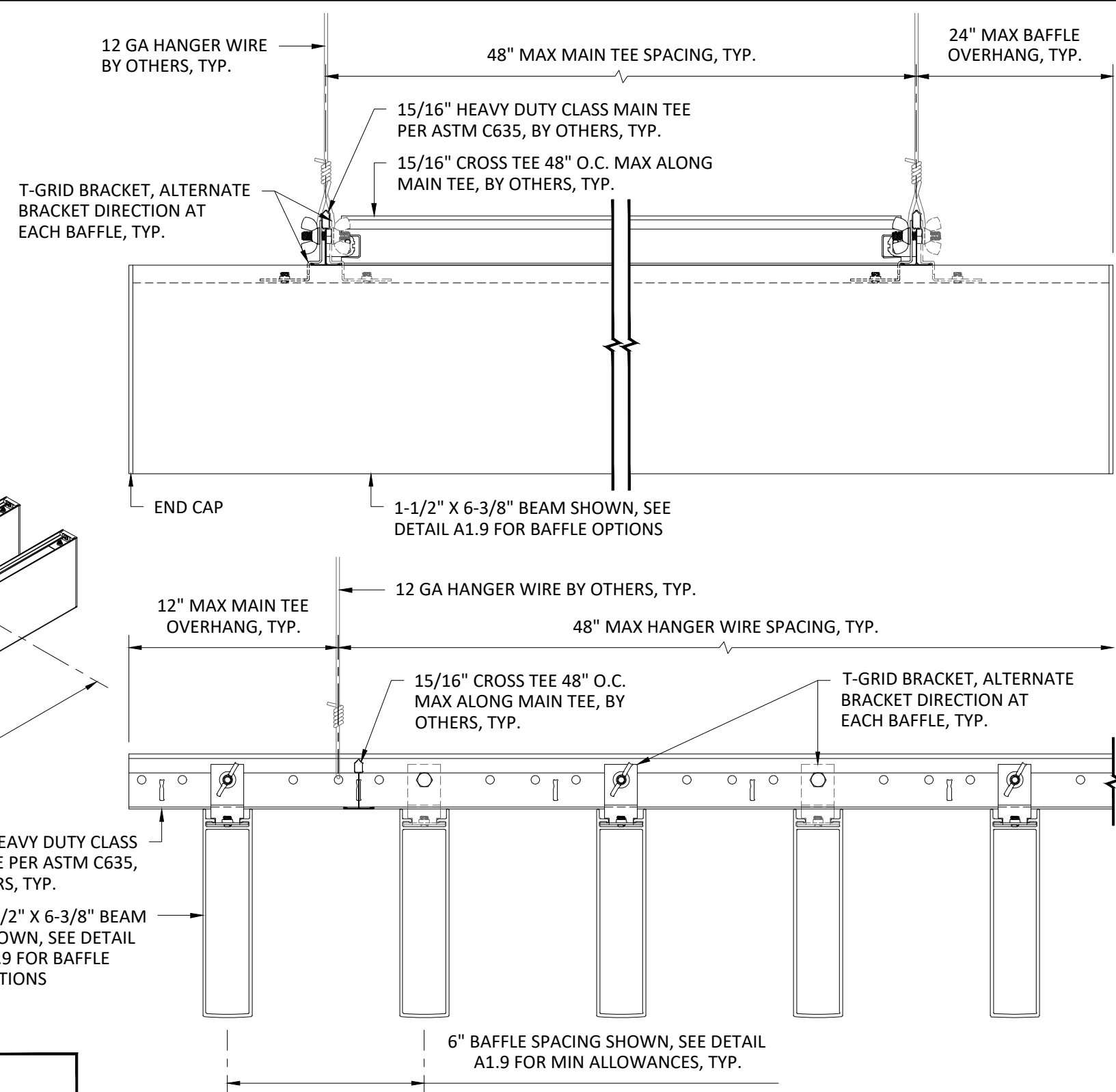
PROJECT: HIGH PROFILE SERIES PRODUCT SPECIFICATIONS
DRAWING NUMBER: HPS-A1.7
SCALE: AS SHOWN
DRAWN BY: HDA ENGINEERING
DATE: 9/8/17



INTERIOR INSTALLATION

NOTE:

ATTACHMENT TO STRUCTURE
DESIGNED AND PROVIDED BY OTHERS,
NOT BY HUNTER DOUGLAS.



TYPICAL SECTIONS
SCALE: 3" = 1'-0"

HunterDouglas
Architectural

5015 Oakbrook Parkway, Suite 100
Norcross, GA 30093
T 800.366.4327
F 770.806.0214
HDarchitectural.com

All rights reserved. This drawing is the property of Hunter Douglas. It may not be copied or multiplied, neither wholly nor partly. It may not be submitted for perusal to third parties.

SPECIFICATIONS (unless noted otherwise)

MATERIAL: EXTRUDED ALUMINUM ALLOY 6063-T5
FINISH: PAINT | POWDER COAT | DECORATED WOOD FINISH | WOOD VENEER |
WILSONART LAMINATE
PERFORATION: NOT AVAILABLE

T-GRID SUSPENSION SPECIFICATIONS

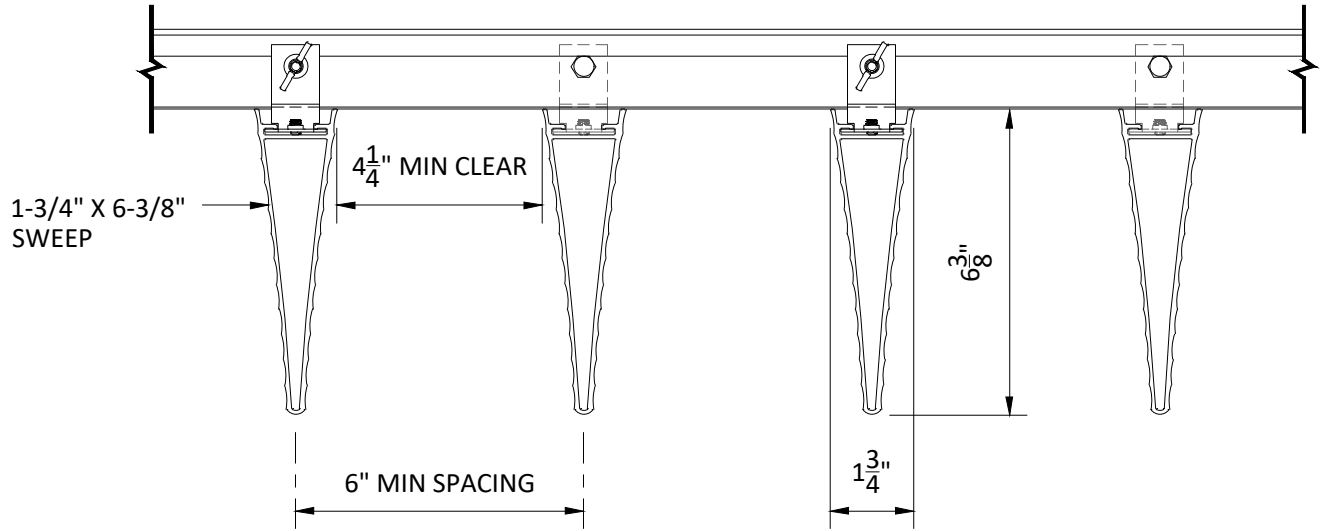
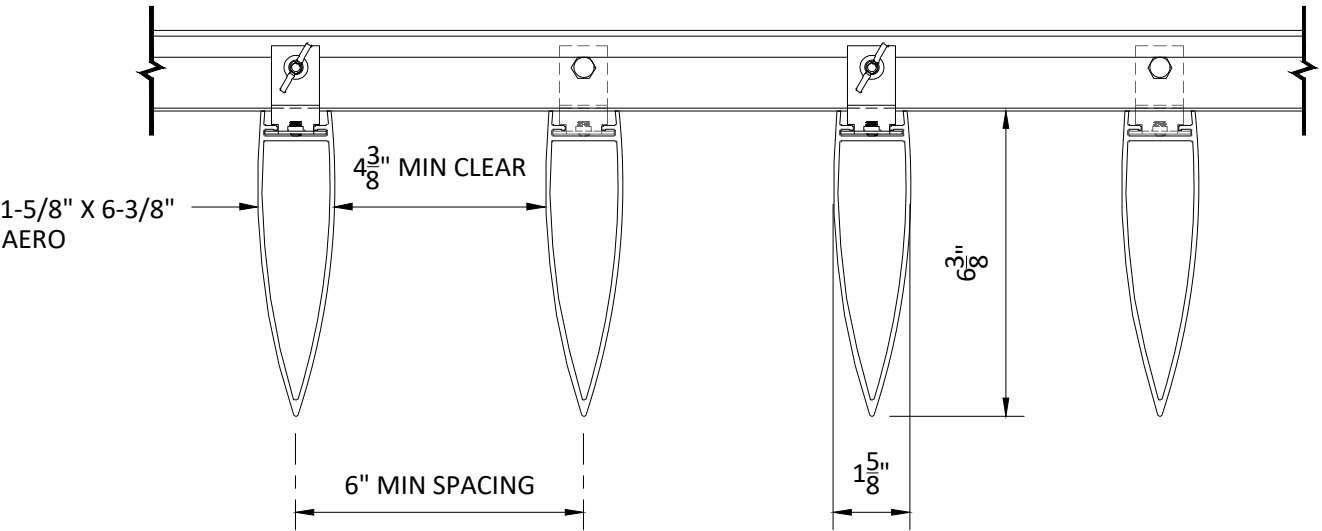
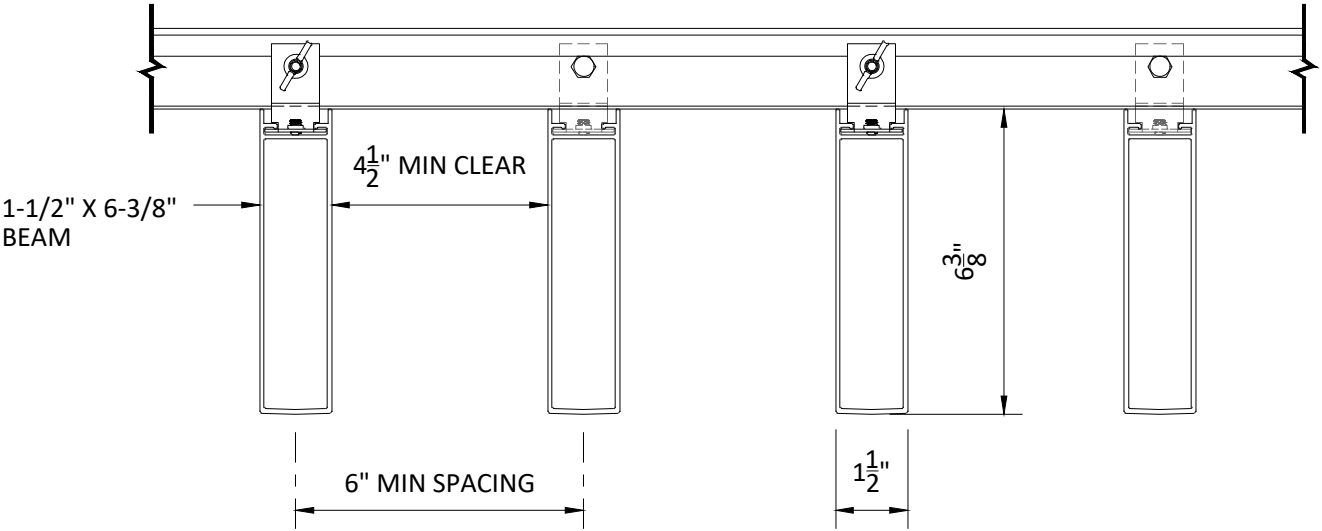
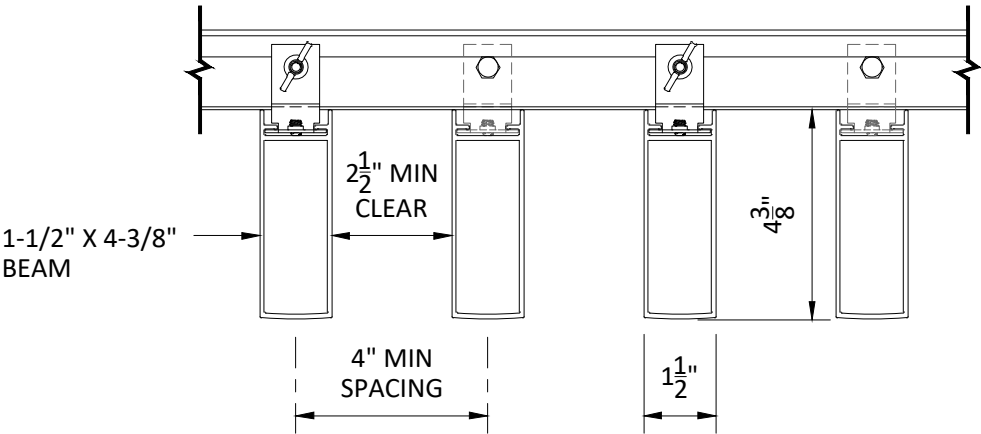
PROJECT: HIGH PROFILE SERIES PRODUCT SPECIFICATIONS
DRAWING NUMBER: HPS-A1.8
SCALE: AS SHOWN
DRAWN BY: HDA ENGINEERING
DATE: 9/8/17

T-GRID BAFFLE OPTIONS

15/16" HEAVY DUTY CLASS T-GRID PER ASTM C635 REQUIRED FOR T-GRID SUSPENSION OPTION

BAFFLE SPACING CANNOT BE LESS THAN MINIMUM SPACING SHOWN BELOW

BAFFLE SIZE/PROFILE	MIN SPACING	MIN CLEAR BETWEEN BAFFLES
1-1/2" X 4-3/8" BEAM	4"	2-1/2"
1-1/2" X 6-3/8" BEAM	6"	4-1/2"
1-5/8" X 6-3/8" AERO	6"	4-3/8"
1-3/4" X 6-3/8" SWEEP	6"	4-1/4"



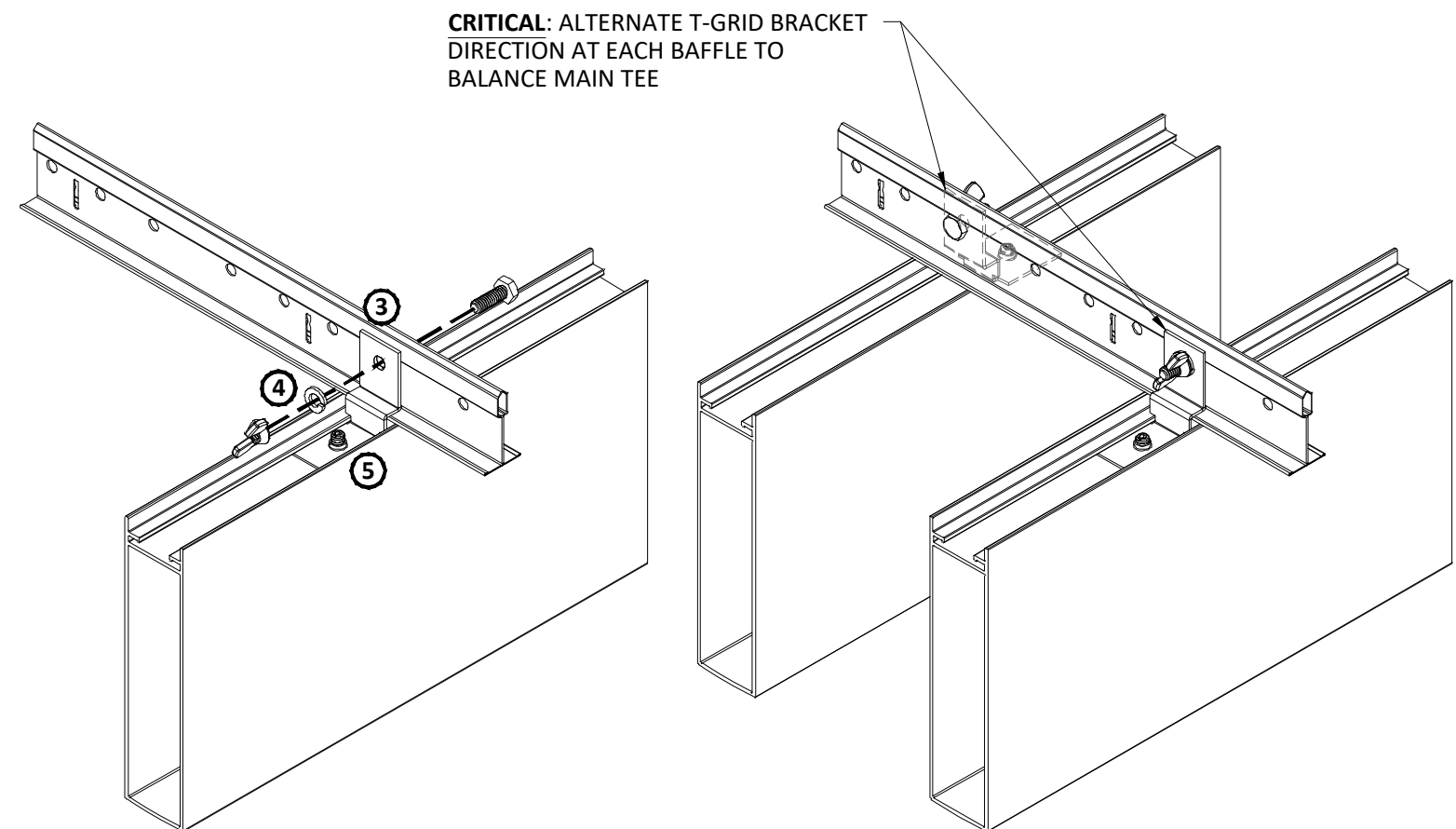
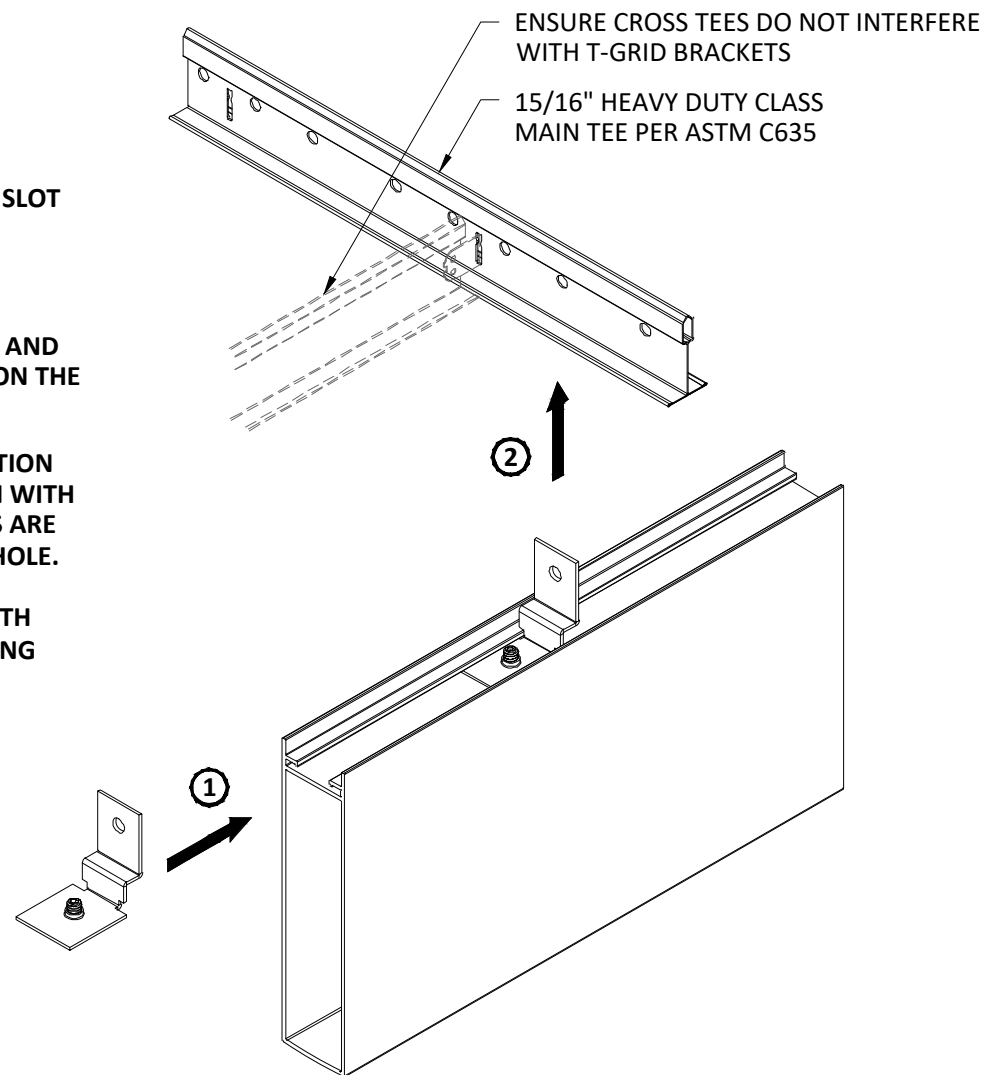
SPECIFICATIONS
(unless noted otherwise)

MATERIAL: EXTRUDED ALUMINUM ALLOY 6063-T5
FINISH: PAINT | POWDER COAT | DECORATED WOOD FINISH | WOOD VENEER |
WILSONART LAMINATE
PERFORATION: NOT AVAILABLE

T-GRID BAFFLE OPTIONS

PROJECT: HIGH PROFILE SERIES PRODUCT SPECIFICATIONS
DRAWING NUMBER: HPS-A1.9
SCALE: 3" = 1'-0"
DRAWN BY: HDA ENGINEERING
DATE: 9/8/17

- ① SLIDE T-GRID BRACKET INTO SUSPENSION SLOT OF BAFFLE.*
- ② LIFT BAFFLE ASSEMBLY UP TO MAIN TEE. ENSURE MAIN TEE FLANGE SLIDES UNDER HORIZONTAL FLANGE OF T-GRID BRACKET AND VERTICAL FLANGE OF T-GRID BRACKET IS ON THE OUTSIDE OF MAIN TEE BULB.
- ③ ADJUST BAFFLE ASSEMBLY TO FINAL POSITION ALONG MAIN TEE AND IF POSSIBLE, ALIGN WITH PRE-PUNCHED MAIN TEE HOLES. IF HOLES ARE NOT COMPATIBLE, FIELD DRILL 1/4" DIA. HOLE.
- ④ SECURE T-GRID BRACKET TO MAIN TEE WITH FACTORY-SUPPLIED 1/4"-20 BOLT AND WING NUT. USE FACTORY-SUPPLIED SPLIT LOCK WASHER ON WING NUT SIDE.
- ⑤ SLIDE BAFFLE INTO FINAL POSITION AND TIGHTEN SET SCREW.



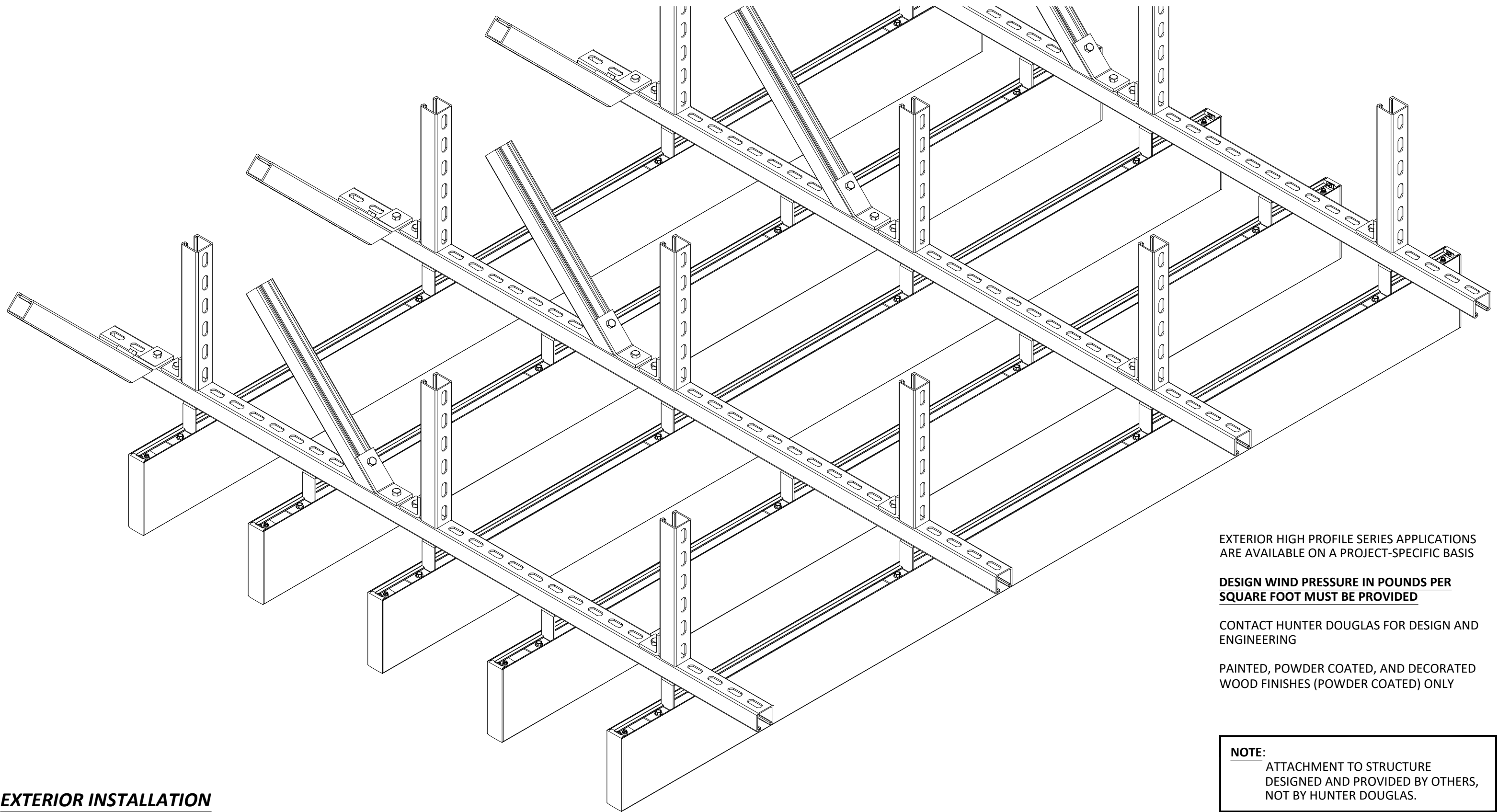
*1-1/2" X 6-3/8" BEAM PROFILE SHOWN, ALL PROFILES SIMILAR
 **VERTICAL SUPPORT OMITTED FOR CLARITY

SPECIFICATIONS (unless noted otherwise)

MATERIAL: EXTRUDED ALUMINUM ALLOY 6063-T5
 FINISH: PAINT | POWDER COAT | DECORATED WOOD FINISH | WOOD VENEER |
 WILSONART LAMINATE
 PERFORATION: NOT AVAILABLE

T-GRID BRACKET INSTALLATION

PROJECT: HIGH PROFILE SERIES PRODUCT SPECIFICATIONS
 DRAWING NUMBER: HPS-A1.10
 SCALE: NOT TO SCALE
 DRAWN BY: HDA ENGINEERING
 DATE: 9/8/17



EXTERIOR INSTALLATION

EXTERIOR HIGH PROFILE SERIES APPLICATIONS
ARE AVAILABLE ON A PROJECT-SPECIFIC BASIS

**DESIGN WIND PRESSURE IN POUNDS PER
SQUARE FOOT MUST BE PROVIDED**

CONTACT HUNTER DOUGLAS FOR DESIGN AND
ENGINEERING

PAINTED, POWDER COATED, AND DECORATED
WOOD FINISHES (POWDER COATED) ONLY

NOTE:
ATTACHMENT TO STRUCTURE
DESIGNED AND PROVIDED BY OTHERS,
NOT BY HUNTER DOUGLAS.



5015 Oakbrook Parkway, Suite 100
Norcross, GA 30093
T 800.366.4327
F 770.806.0214
HDarchitectural.com

*All rights reserved. This
drawing is the property
of Hunter Douglas. It
may not be copied or
multiplied, neither
wholly nor partly. It may
not be submitted for
perusal to third parties.*

SPECIFICATIONS
(unless noted otherwise)

MATERIAL: EXTRUDED ALUMINUM ALLOY 6063-T5
FINISH: PAINT | POWDER COAT | DECORATED WOOD FINISH
PERFORATION: NOT AVAILABLE

EXTERIOR APPLICATIONS

PROJECT: HIGH PROFILE SERIES PRODUCT SPECIFICATIONS
DRAWING NUMBER: HPS-A1.11
SCALE: NOT TO SCALE
DRAWN BY: HDA ENGINEERING
DATE: 10/23/17