

HunterDouglasContract

CEILINGS

5015 Oakbrook Parkway, Suite 100
Norcross, GA 30093
800-366-4327 / 770-806-9557
fax: 770-806-0214

All rights reserved. This drawing is the property of Hunter Douglas and may not be copied or multiplied neither wholly nor partly. It may not be submitted for perusal to third parties either.

www.hunterdouglascontract.com

SPECIFICATIONS

(unless noted otherwise)

MATERIAL: 0.032" OR 0.040" ALUMINUM SNAP-IN PANEL
24 GA GALV. HEAVY-DUTY SNAP BAR (SECONDARY CARRIER)
FINISH: PAINT / POWDER COAT / LUXACOTE
PERFORATION: SEE DETAIL A1.1 THIS SET

TOLERANCES

(unless noted otherwise)

DECIMAL: .0 +/- .060
.00 +/- .030
.000 +/- .010
FRACTIONAL: +/- 1/32"
ANGULAR: +/- 1/2° (.5°)

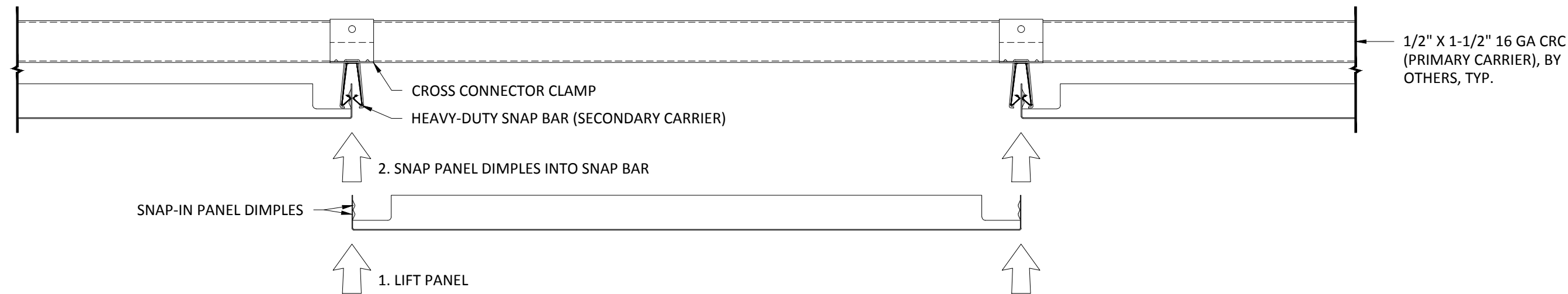
LUXALON
METAL CEILINGS

WoodWright
WOOD CEILINGS

Techstyle
ACOUSTICAL CEILINGS

OVERALL ISOMETRIC VIEW

PROJECT: SNAP-IN PRODUCT SPECIFICATIONS
DRAWING NUMBER: SNAP-IN-A1.0
PART NUMBER: N/A
SCALE: AS SHOWN
DATE: 7/2/14
DRAWN BY: HDAP ENGINEERING



PANEL CONFIGURATIONS:

- 12" WIDTH BY 96" LENGTH MAX*
- 24" WIDTH BY 48" LENGTH MAX*
- OTHER SIZES AVAILABLE, CONTACT HUNTER DOUGLAS

*8 SQUARE FEET MAXIMUM PANEL SIZE

MATERIAL THICKNESS

- SNAP-IN TILE: .032" OR .040" ALUMINUM
- SNAP-IN PLANK: .032"OR .040" ALUMINUM

PANEL FINISHES

- PAINTED & POWDER COATED - INTERIOR & EXTERIOR
- LUXACOTE - INTERIOR & EXTERIOR
- DECORATED WOOD FINISH (POWDER COATED) - INTERIOR & EXTERIOR
- SEE TABLE BELOW FOR PERFORATION OPTIONS

HUNTER DOUGLAS SNAP-IN PLANKS ARE DESCRIBED AS A METAL PANEL 24" TO 96" IN LENGTH. CONSTRUCTED AS DETAILED IN THIS SET. SNAP-IN PLANKS ARE DESIGNED TO BE INSTALLED ON HUNTER DOUGLAS SNAP-IN SUSPENSION SYSTEM. JOINTS BETWEEN PANELS WILL BE BUTT AND FLUSH.

FOR PANEL WIDTHS LARGER THAN 24", PLEASE CONTACT HUNTER DOUGLAS. SOME WIDTHS WILL INCUR AN ADDITIONAL TOOLING CHARGE.

PERFORATION OPTIONS*									
PERFORATION	MAX LENGTH	PERFORATION	MAX LENGTH	PERFORATION	MAX LENGTH	PERFORATION	MAX LENGTH	PERFORATION	MAX LENGTH
103 (20.0% OPEN)	96"	106 (16.0% OPEN)	96"	119 (8.0% OPEN)	96"	132 (20.0% OPEN)	72"	201 (19.6% OPEN)	96"
*1/4" NOM. NON-PERFORATED BORDER, TYPICAL									

INTERIOR INSTALLATION

*VERTICAL SUPPORT OMITTED FOR CLARITY

HunterDouglasContract

CEILINGS

5015 Oakbrook Parkway, Suite 100
Norcross, GA 30093
800-366-4327 / 770-806-9557
fax: 770-806-0214

All rights reserved. This drawing is the property of Hunter Douglas and may not be copied or multiplied neither wholly nor partly. It may not be submitted for perusal to third parties either.

www.hunterdouglascontract.com

SPECIFICATIONS

(unless noted otherwise)

MATERIAL: 0.032" OR 0.040" ALUMINUM SNAP-IN PANEL
24 GA GALV. HEAVY-DUTY SNAP BAR (SECONDARY CARRIER)
FINISH: PAINT / POWDER COAT / LUXACOTE
PERFORATION: SEE PERFORATION TABLE THIS SHEET

TOLERANCES

(unless noted otherwise)

DECIMAL: .0 +/- .060
.00 +/- .030
.000 +/- .010
FRACTIONAL: +/- $\frac{1}{32}$ "
ANGULAR: +/- $\frac{1}{2}^{\circ}$ (.5°)

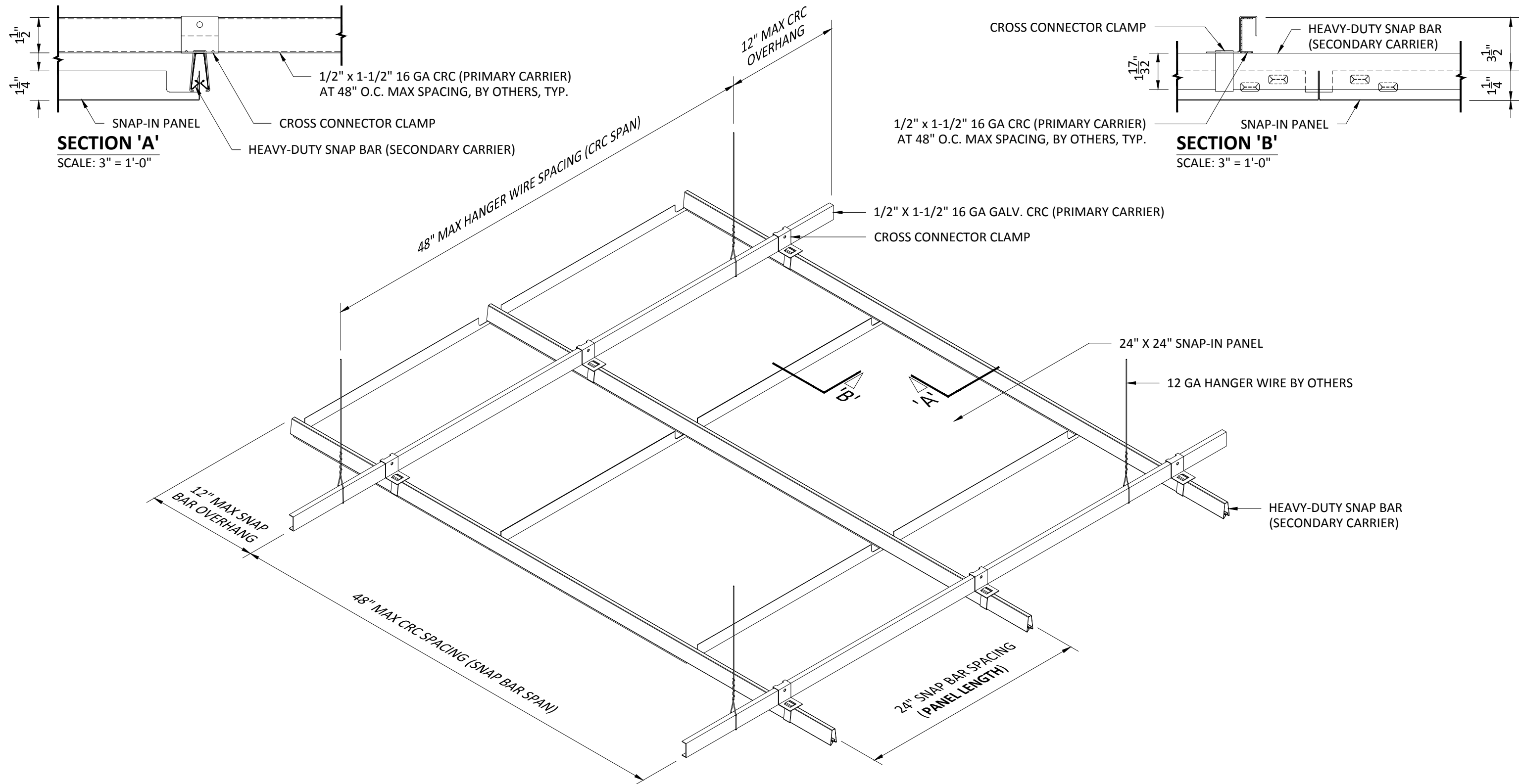
LUXALON
METAL CEILINGS

WoodWright
WOOD CEILINGS

Techstyle
ACOUSTICAL CEILINGS

PANEL SPECIFICATIONS

PROJECT: SNAP-IN PRODUCT SPECIFICATIONS
DRAWING NUMBER: SNAP-IN-A1.1
PART NUMBER: N/A
SCALE: 3" = 1'-0"
DATE: 7/2/14
DRAWN BY: HDAP ENGINEERING



INTERIOR INSTALLATION

HunterDouglasContract

CEILINGS

5015 Oakbrook Parkway, Suite 100
 Norcross, GA 30093
 800-366-4327 / 770-806-9557
 fax: 770-806-0214

All rights reserved. This drawing is the property of Hunter Douglas and may not be copied or multiplied neither wholly nor partly. It may not be submitted for perusal to third parties either.

www.hunterdouglascontract.com

SPECIFICATIONS
 (unless noted otherwise)
 MATERIAL: 0.032" OR 0.040" ALUMINUM SNAP-IN PANEL
 24 GA GALV. HEAVY-DUTY SNAP BAR (SECONDARY CARRIER)
 FINISH: PAINT / POWDER COAT / LUXACOTE
 PERFORATION: SEE DETAIL A1.1 THIS SET

TOLERANCES
 (unless noted otherwise)
 DECIMAL: .0 +/- .060
 .00 +/- .030
 .000 +/- .010
 FRACTIONAL: +/- 1/32"
 ANGULAR: +/- 1/2° (.5°)

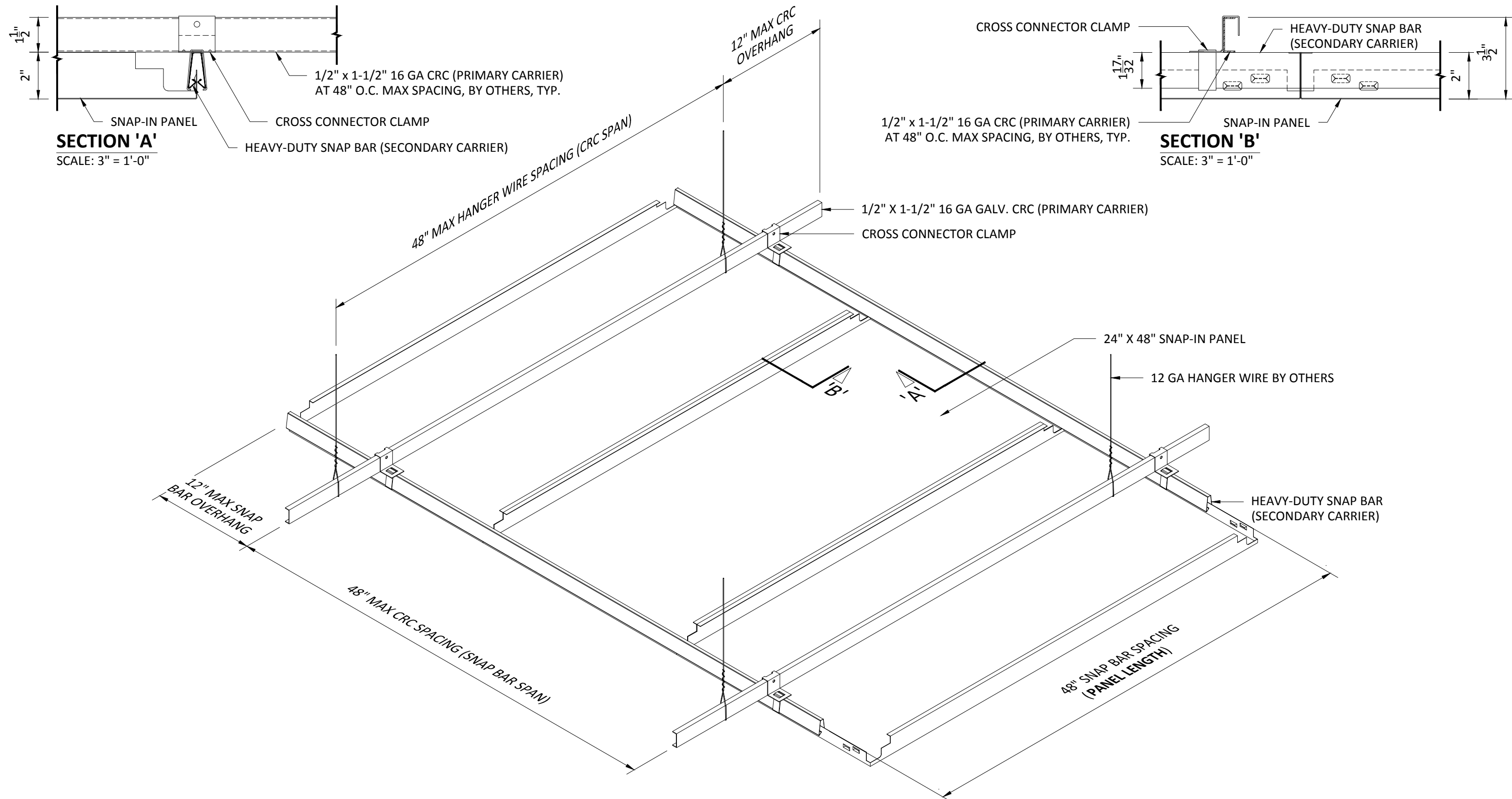
LUXALON®
 METAL CEILINGS

WoodWright®
 WOOD CEILINGS

Techstyle®
 ACOUSTICAL CEILINGS

2'-0" X 2'-0" PANEL SUSPENSION SPECIFICATIONS

PROJECT: SNAP-IN PRODUCT SPECIFICATIONS
 DRAWING NUMBER: SNAP-IN-A1.2
 PART NUMBER: N/A
 SCALE: NOT TO SCALE
 DATE: 7/2/14
 DRAWN BY: HDAP ENGINEERING



INTERIOR INSTALLATION

HunterDouglasContract

CEILINGS

5015 Oakbrook Parkway, Suite 100
Norcross, GA 30093
800-366-4327 / 770-806-9557
fax: 770-806-0214

All rights reserved. This drawing is the property of Hunter Douglas and may not be copied or multiplied neither wholly nor partly. It may not be submitted for perusal to third parties either.

www.hunterdouglascontract.com

SPECIFICATIONS
(unless noted otherwise)
MATERIAL: 0.032" OR 0.040" ALUMINUM SNAP-IN PANEL
24 GA GALV. HEAVY-DUTY SNAP BAR (SECONDARY CARRIER)
FINISH: PAINT / POWDER COAT / LUXACOTE
PERFORATION: SEE DETAIL A1.1 THIS SET

TOLERANCES
(unless noted otherwise)
DECIMAL: .0 +/- .060
.00 +/- .030
.000 +/- .010
FRACTIONAL: +/- $\frac{1}{32}$ "
ANGULAR: +/- $\frac{1}{2}^{\circ}$ (.5°)

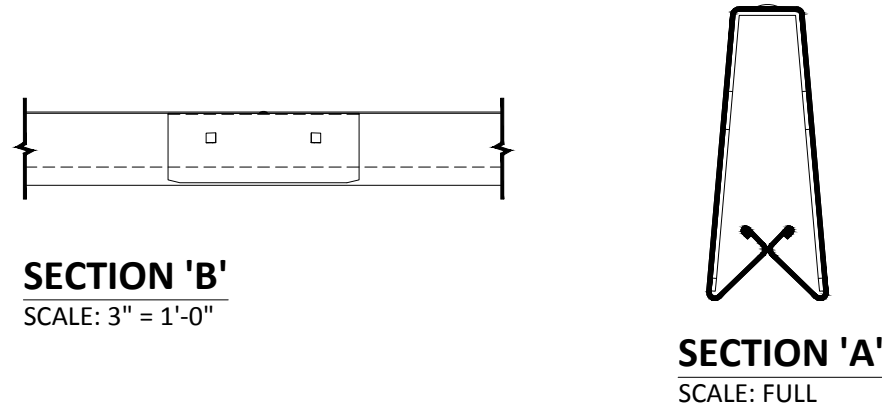
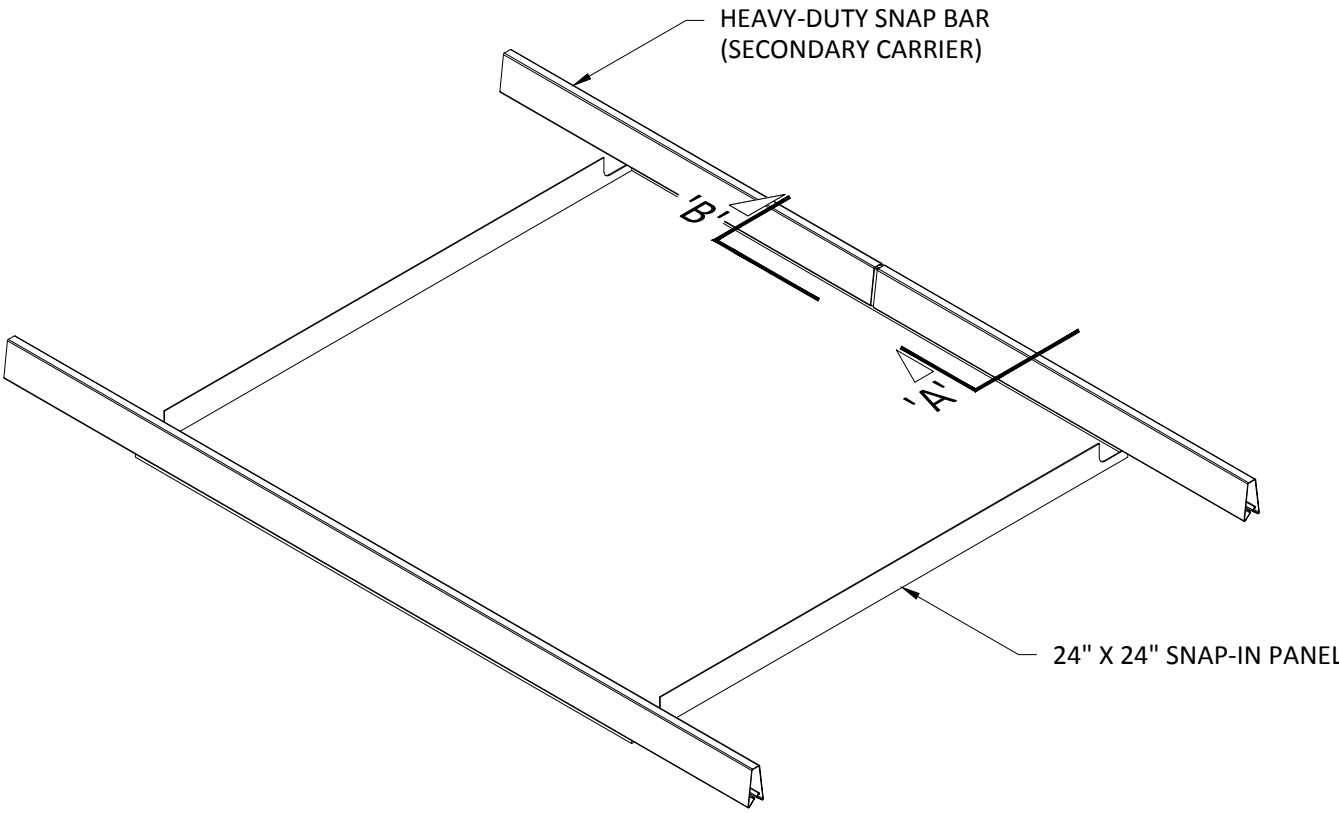
LUXALON
METAL CEILINGS

WoodWright
WOOD CEILINGS

Techstyle
ACOUSTICAL CEILINGS

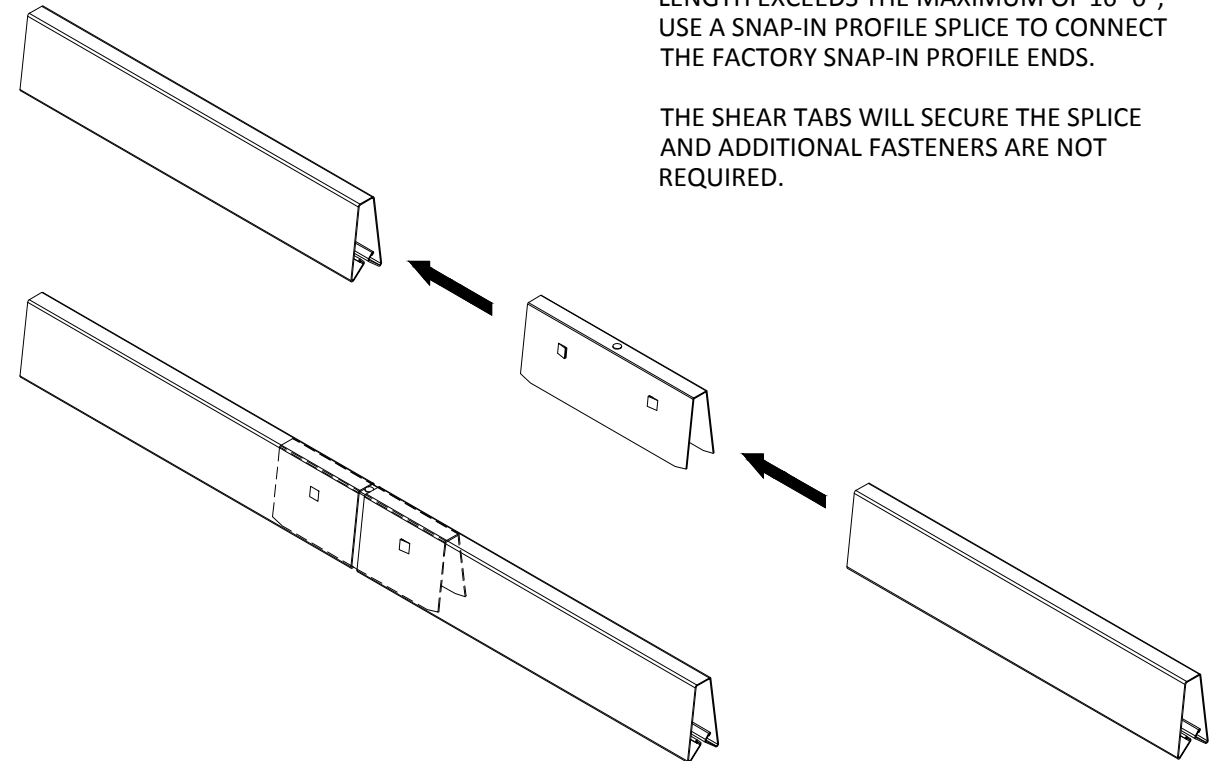
2'-0" X 4'-0" PLANK SUSPENSION SPECIFICATIONS

PROJECT: SNAP-IN PRODUCT SPECIFICATIONS
DRAWING NUMBER: SNAP-IN-A1.3
PART NUMBER: N/A
SCALE: NOT TO SCALE
DATE: 7/2/14
DRAWN BY: HDAP ENGINEERING



IF THE DESIRED HEAVY-DUTY SNAP BAR LENGTH EXCEEDS THE MAXIMUM OF 16'-0", USE A SNAP-IN PROFILE SPLICE TO CONNECT THE FACTORY SNAP-IN PROFILE ENDS.

THE SHEAR TABS WILL SECURE THE SPLICE AND ADDITIONAL FASTENERS ARE NOT REQUIRED.



HunterDouglasContract

CEILINGS

5015 Oakbrook Parkway, Suite 100
Norcross, GA 30093
800-366-4327 / 770-806-9557
fax: 770-806-0214

All rights reserved. This drawing is the property of Hunter Douglas and may not be copied or multiplied neither wholly nor partly. It may not be submitted for perusal to third parties either.

www.hunterdouglascontract.com

SPECIFICATIONS
(unless noted otherwise)
MATERIAL: 0.032" OR 0.040" ALUMINUM SNAP-IN PANEL
24 GA GALV. HEAVY-DUTY SNAP BAR (SECONDARY CARRIER)
FINISH: PAINT / POWDER COAT / LUXACOTE
PERFORATION: SEE DETAIL A1.1 THIS SET

LUXALON
METAL CEILINGS

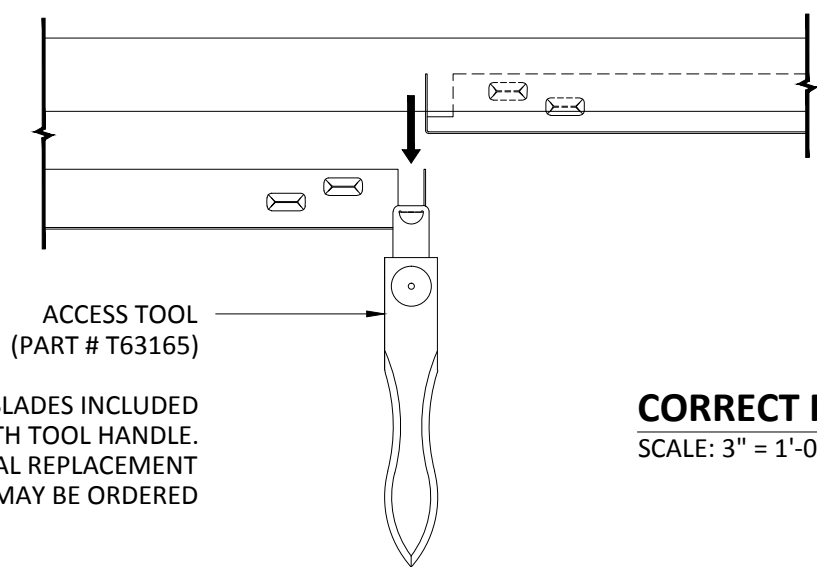
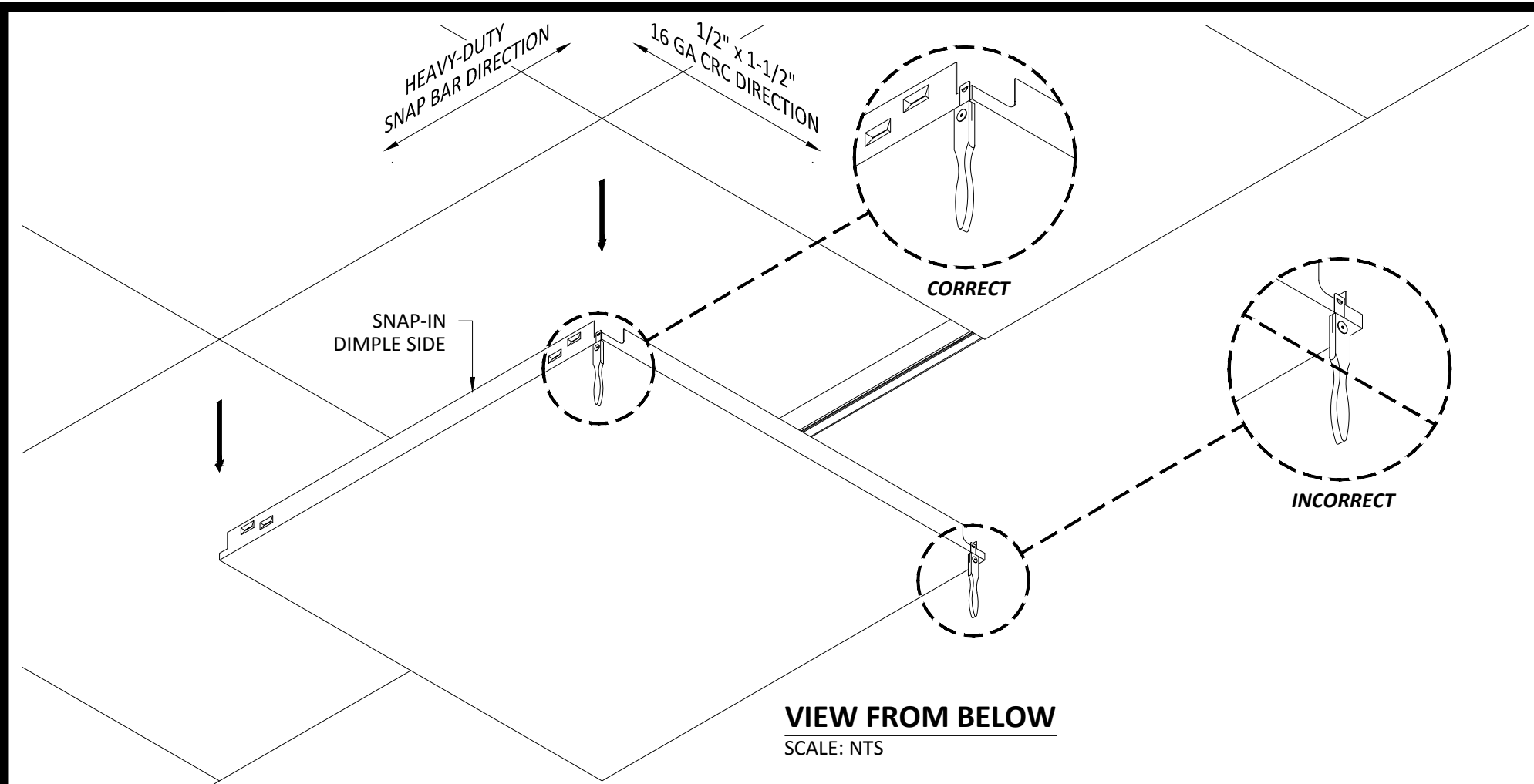
WoodWright
WOOD CEILINGS

TOLERANCES
(unless noted otherwise)
DECIMAL: .0 +/- .060
.00 +/- .030
.000 +/- .010
FRACTIONAL: +/- 1/32"
ANGULAR: +/- 1/2° (.5°)

Techstyle
ACOUSTICAL CEILINGS

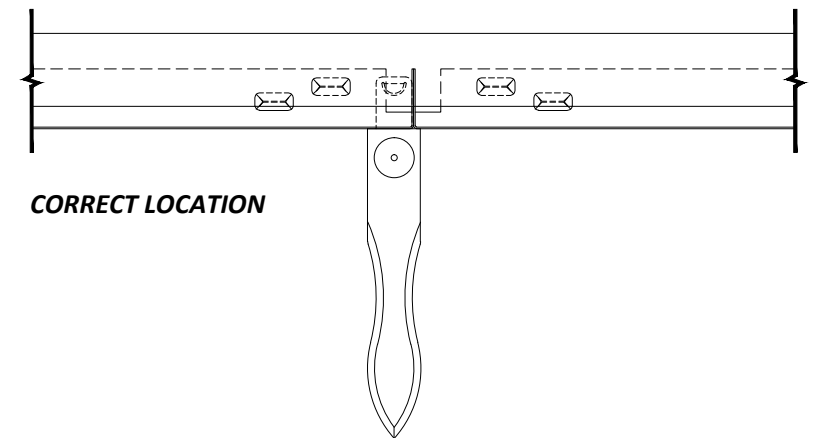
HEAVY-DUTY SNAP BAR SPECIFICATIONS

PROJECT: SNAP-IN PRODUCT SPECIFICATIONS
DRAWING NUMBER: SNAP-IN-A1.4
PART NUMBER: N/A
SCALE: AS SHOWN
DATE: 7/2/14
DRAWN BY: HDAP ENGINEERING

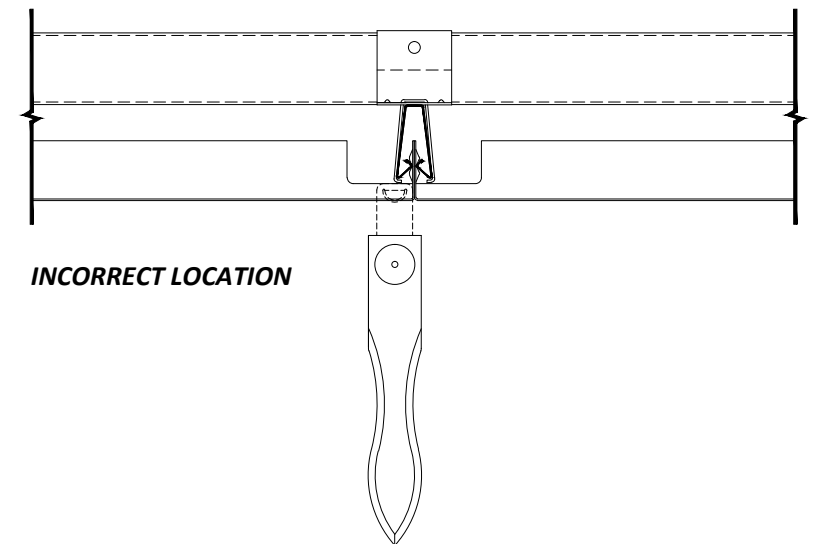


NOTE: 5 BLADES INCLUDED
WITH TOOL HANDLE.
ADDITIONAL REPLACEMENT
BLADES MAY BE ORDERED

CORRECT REMOVAL
SCALE: 3" = 1'-0"



CORRECT LOCATION



INCORRECT LOCATION

TO FIND CORRECT LOCATION FOR ACCESS TOOL, INSERT ACCESS TOOL AT PANEL INTERSECTION. ALIGN EDGE OF BLADE WITH EDGE OF PANEL. IF INSERTED IN PROPER LOCATION, YOU SHOULD HEAR A "CLICK" SOUND AND THE WOODEN HANDLE WILL SEAT FLUSH AGAINST THE PANEL FACE. IF NOT INSERTED IN PROPER LOCATION, BLADE WILL STOP BEFORE WOOD HANDLE SEATS. IF THIS HAPPENS, REMOVE TOOL AND INSERT IN ADJACENT PANEL EDGE. (AROUND THE CORNER).

HunterDouglasContract

CEILINGS

5015 Oakbrook Parkway, Suite 100
Norcross, GA 30093
800-366-4327 / 770-806-9557
fax: 770-806-0214

All rights reserved. This drawing is the property of Hunter Douglas and may not be copied or multiplied neither wholly nor partly. It may not be submitted for perusal to third parties either.

www.hunterdouglascontract.com

SPECIFICATIONS

(unless noted otherwise)
MATERIAL: 0.032" OR 0.040" ALUMINUM SNAP-IN PANEL
24 GA GALV. HEAVY-DUTY SNAP BAR (SECONDARY CARRIER)
FINISH: PAINT / POWDER COAT / LUXACOTE
PERFORATION: SEE DETAIL A1.1 THIS SET

LUXALON®
METAL CEILINGS

WoodWright®
WOOD CEILINGS

TOLERANCES

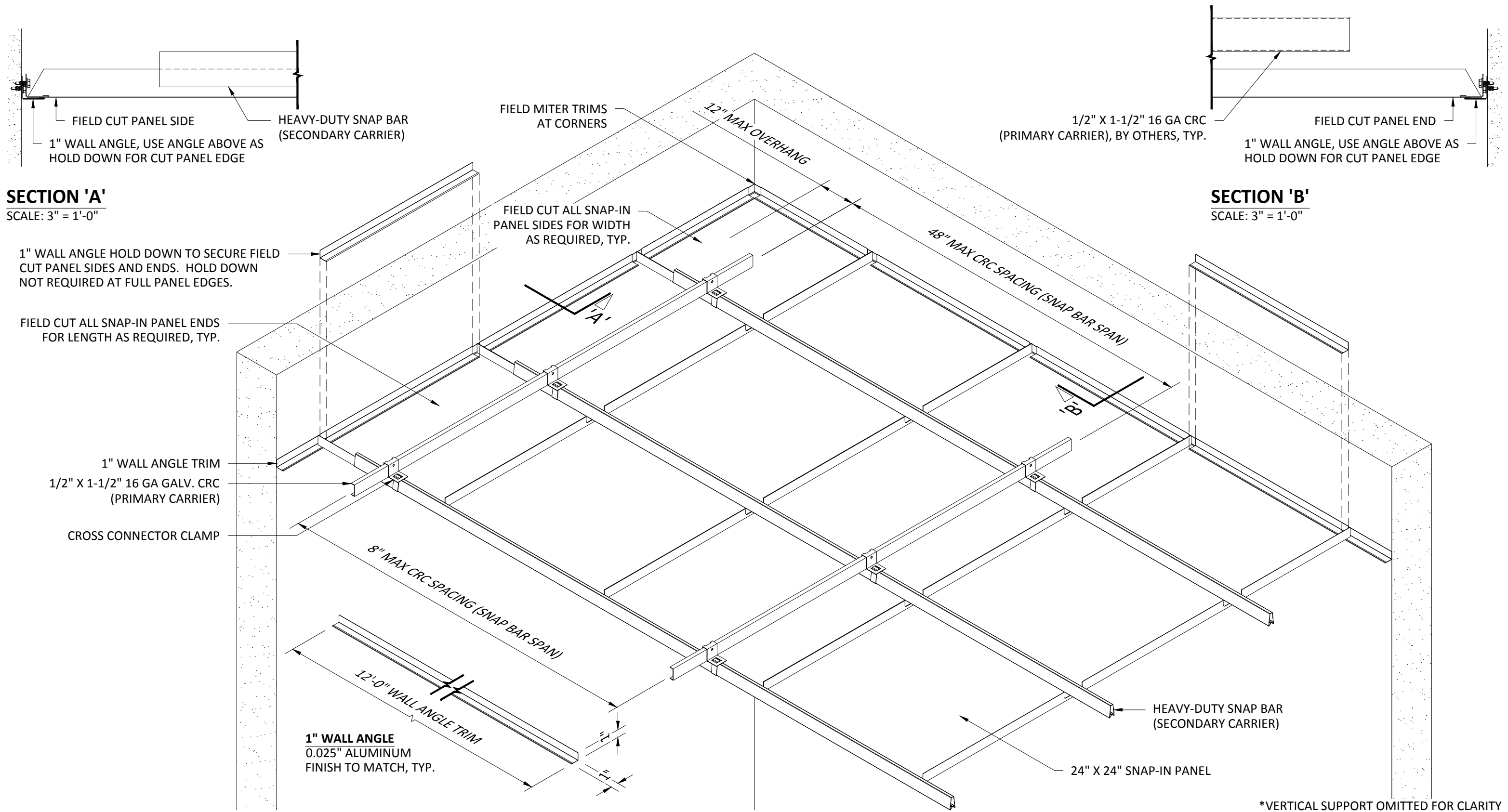
(unless noted otherwise)

DECIMAL: .0 +/- .060
.00 +/- .030
.000 +/- .010
FRACTIONAL: +/- $\frac{1}{32}$ "
ANGULAR: +/- $\frac{1}{2}^\circ$ (.5°)

Techstyle®
ACOUSTICAL CEILINGS

ACCESS TOOL SPECIFICATIONS

PROJECT: SNAP-IN PRODUCT SPECIFICATIONS
DRAWING NUMBER: SNAP-IN-A1.5
PART NUMBER: N/A
SCALE: AS SHOWN
DATE: 7/2/14
DRAWN BY: HDAP ENGINEERING



HunterDouglasContract

CEILINGS

5015 Oakbrook Parkway, Suite 100
Norcross, GA 30093
800-366-4327 / 770-806-9557
fax: 770-806-0214

All rights reserved. This drawing is the property of Hunter Douglas and may not be copied or multiplied neither wholly nor partly. It may not be submitted for perusal to third parties either.

www.hunterdouglascontract.com

SPECIFICATIONS
(unless noted otherwise)
MATERIAL: 0.032" OR 0.040" ALUMINUM SNAP-IN PANEL
24 GA GALV. HEAVY-DUTY SNAP BAR (SECONDARY CARRIER)
FINISH: PAINT / POWDER COAT / LUXACOTE
PERFORATION: SEE DETAIL A1.1 THIS SET

LUXALON
METAL CEILINGS

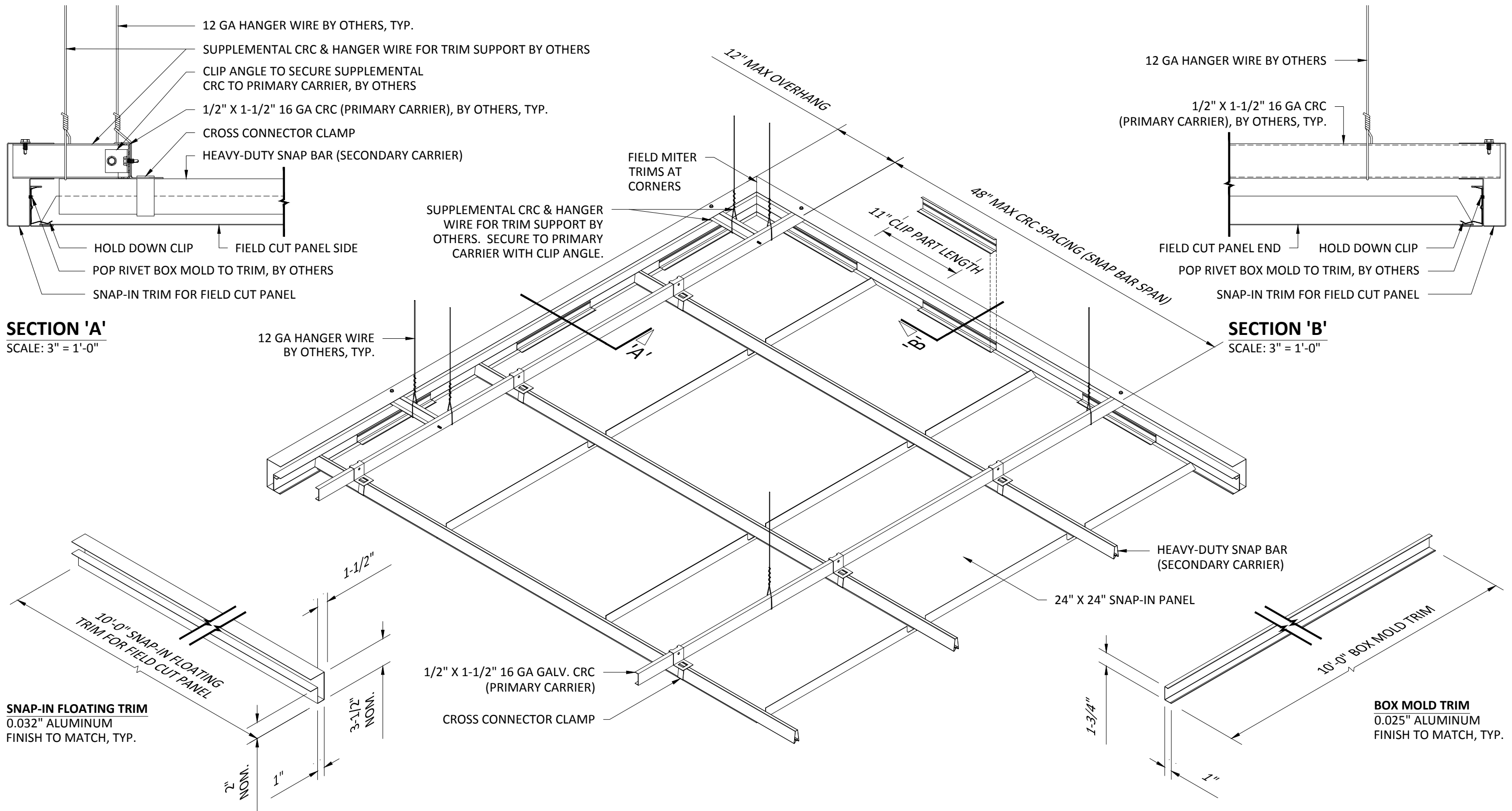
WoodWright
WOOD CEILINGS

Techstyle
ACOUSTICAL CEILINGS

TOLERANCES
(unless noted otherwise)
DECIMAL: .0 +/- .060
.00 +/- .030
.000 +/- .010
FRACTIONAL: +/- 1/32"
ANGULAR: +/- 1/2° (.5°)

WALL TRIM SPECIFICATIONS

PROJECT: SNAP-IN PRODUCT SPECIFICATIONS
DRAWING NUMBER: SNAP-IN-A1.6
PART NUMBER: N/A
SCALE: AS SHOWN
DATE: 7/2/14
DRAWN BY: HDAP ENGINEERING



HunterDouglasContract

CEILINGS

5015 Oakbrook Parkway, Suite 100
Norcross, GA 30093
800-366-4327 / 770-806-9557
fax: 770-806-0214

All rights reserved. This drawing is the property of Hunter Douglas and may not be copied or multiplied neither wholly nor partly. It may not be submitted for perusal to third parties either.

www.hunterdouglascontract.com

SPECIFICATIONS

(unless noted otherwise)

MATERIAL: 0.032" OR 0.040" ALUMINUM SNAP-IN PANEL
24 GA GALV. HEAVY-DUTY SNAP BAR (SECONDARY CARRIER)
FINISH: PAINT / POWDER COAT / LUXACOTE
PERFORATION: SEE DETAIL A1.1 THIS SET

TOLERANCES

(unless noted otherwise)

DECIMAL: .0 +/- .060
.00 +/- .030
.000 +/- .010
FRACTIONAL: +/- 1/32"
ANGULAR: +/- 1/2° (.5°)

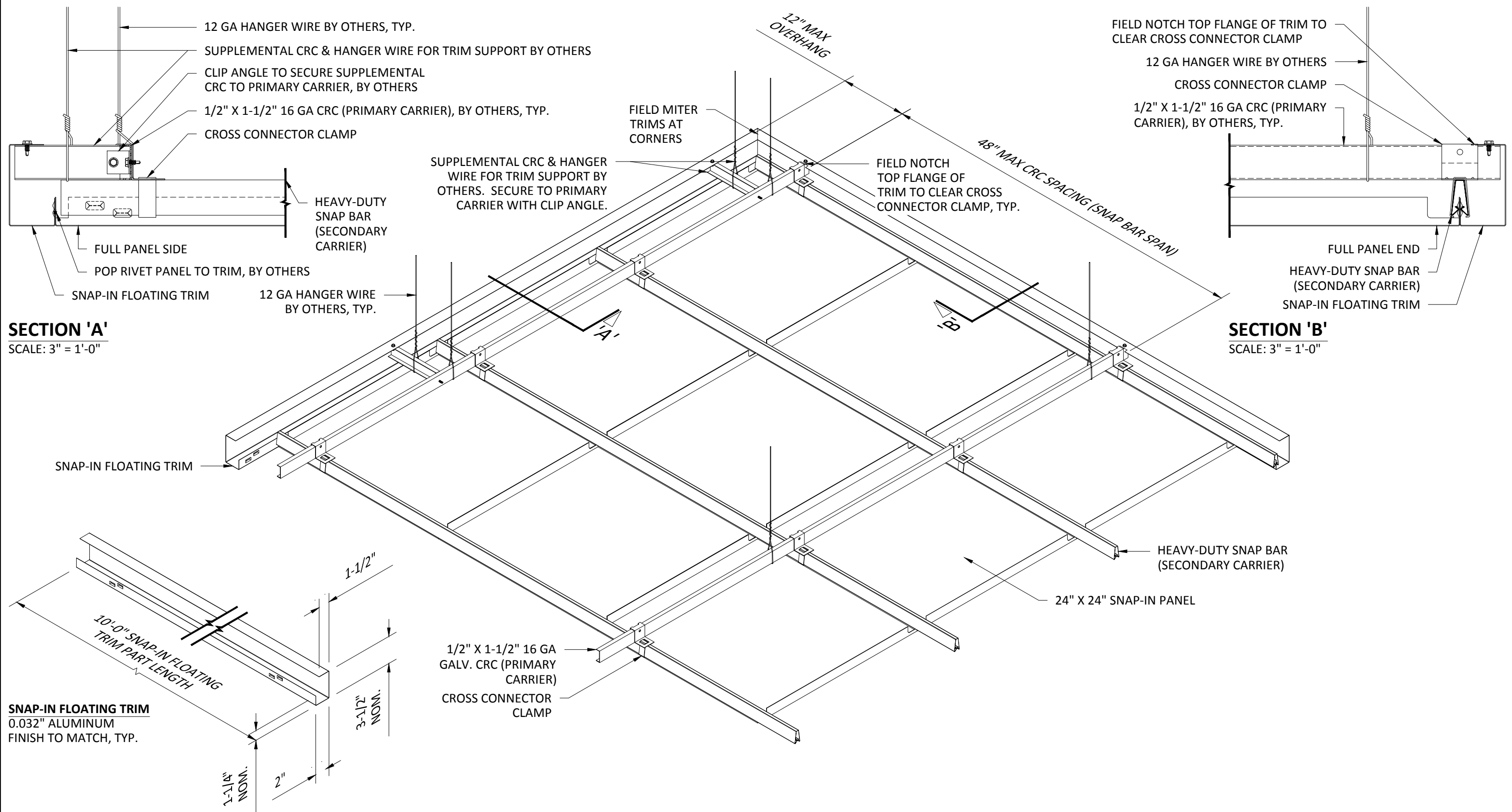
LUXALON
METAL CEILINGS

WoodWright
WOOD CEILINGS

Techstyle
ACOUSTICAL CEILINGS

FIELD CUT FLOATING TRIM SPECIFICATIONS

PROJECT: SNAP-IN PRODUCT SPECIFICATIONS
DRAWING NUMBER: SNAP-IN-A1.7
PART NUMBER: N/A
SCALE: AS SHOWN
DATE: 7/2/14
DRAWN BY: HDAP ENGINEERING



HunterDouglasContract

CEILINGS

5015 Oakbrook Parkway, Suite 100
Norcross, GA 30093
800-366-4327 / 770-806-9557
fax: 770-806-0214

All rights reserved. This drawing is the property of Hunter Douglas and may not be copied or multiplied neither wholly nor partly. It may not be submitted for perusal to third parties either.

www.hunterdouglascontract.com

SPECIFICATIONS

(unless noted otherwise)

MATERIAL: 0.032" OR 0.040" ALUMINUM SNAP-IN PANEL
24 GA GALV. HEAVY-DUTY SNAP BAR (SECONDARY CARRIER)
FINISH: PAINT / POWDER COAT / LUXACOTE
PERFORATION: SEE DETAIL A1.1 THIS SET

TOLERANCES

(unless noted otherwise)

DECIMAL: .0 +/- .060
.00 +/- .030
.000 +/- .010
FRACTIONAL: +/- 1/32"
ANGULAR: +/- 1/2° (.5°)

LUXALON
METAL CEILINGS

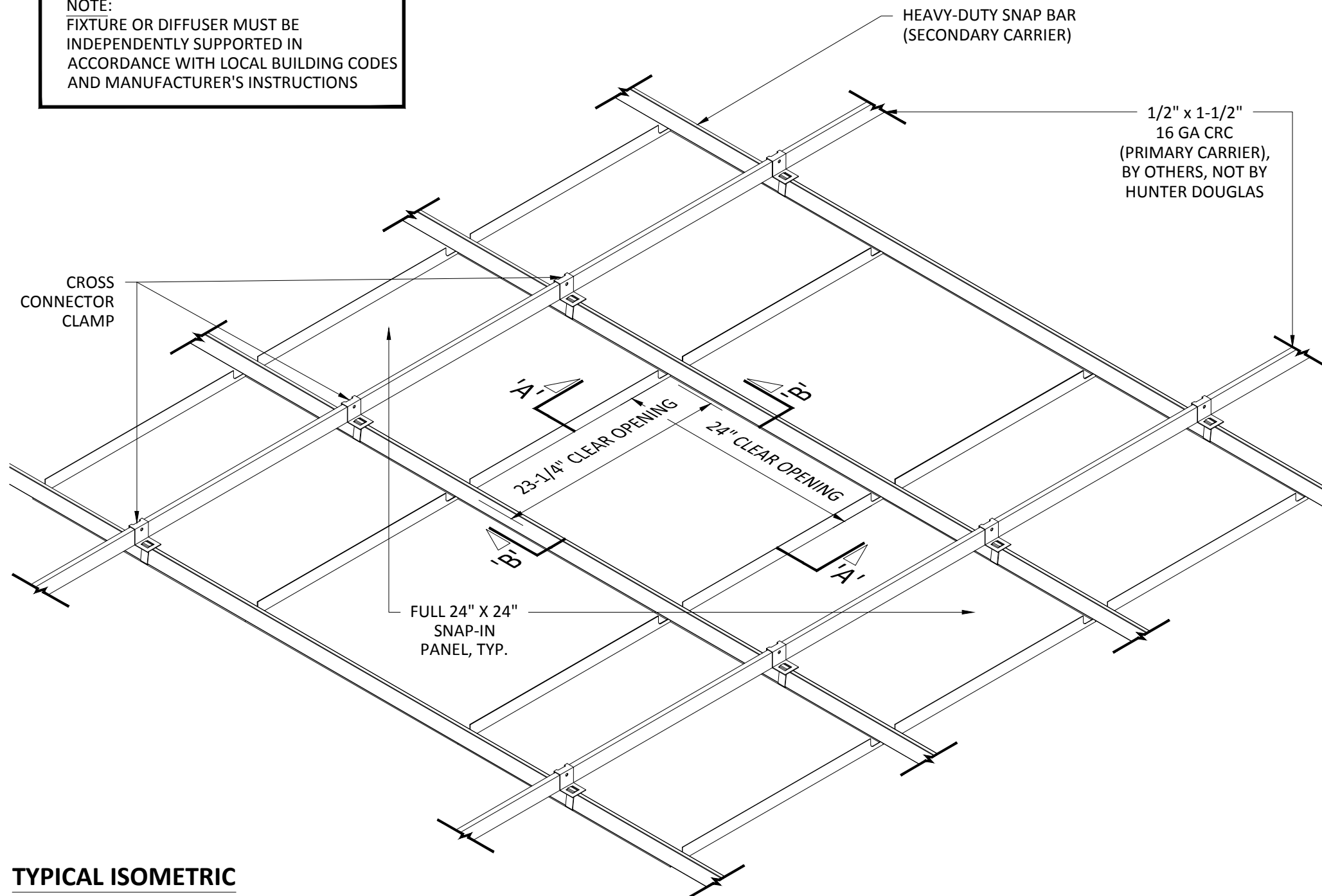
WoodWright
WOOD CEILINGS

Techstyle
ACOUSTICAL CEILINGS

FULL PANEL FLOATING TRIM SPECIFICATIONS

PROJECT: SNAP-IN PRODUCT SPECIFICATIONS
DRAWING NUMBER: SNAP-IN-A1.8
PART NUMBER: N/A
SCALE: AS SHOWN
DATE: 7/2/14
DRAWN BY: HDAP ENGINEERING

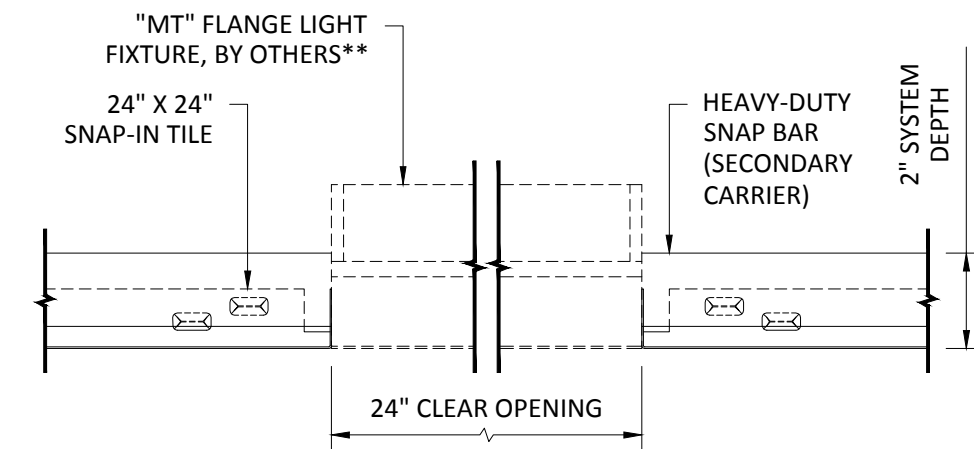
NOTE:
FIXTURE OR DIFFUSER MUST BE
INDEPENDENTLY SUPPORTED IN
ACCORDANCE WITH LOCAL BUILDING CODES
AND MANUFACTURER'S INSTRUCTIONS



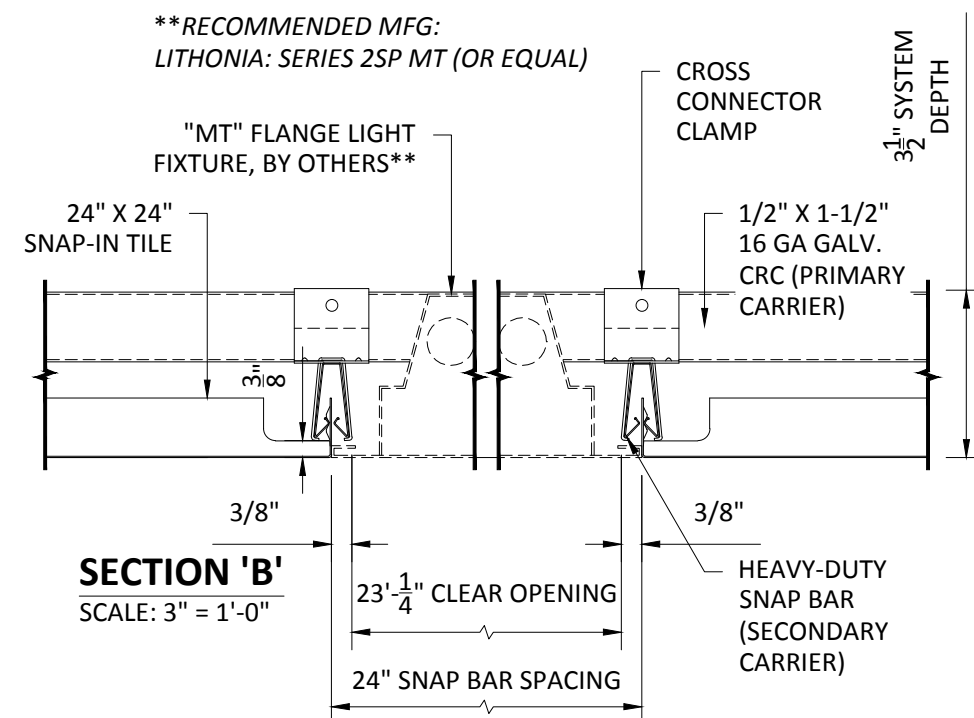
TYPICAL ISOMETRIC
SCALE: NOT TO SCALE

INTERIOR INSTALLATION

*HANGER WIRE OMITTED FOR CLARITY



SECTION 'A'
SCALE: 3" = 1'-0"



SECTION 'B'
SCALE: 3" = 1'-0"

HunterDouglasContract

CEILINGS

5015 Oakbrook Parkway, Suite 100
Norcross, GA 30093
800-366-4327 / 770-806-9557
fax: 770-806-0214

All rights reserved. This drawing
is the property of Hunter
Douglas and may not be copied
or multiplied neither wholly nor
partly. It may not be submitted
for perusal to third parties
either.

www.hunterdouglascontract.com

SPECIFICATIONS

(unless noted otherwise)

MATERIAL: 0.032" OR 0.040" ALUMINUM SNAP-IN PANEL
24 GA GALV. HEAVY-DUTY SNAP BAR (SECONDARY CARRIER)
FINISH: PAINT / POWDER COAT / LUXACOTE
PERFORATION: SEE DETAIL A1.1 THIS SET

LUXALON
METAL CEILINGS

WoodWright
WOOD CEILINGS

Techstyle
ACOUSTICAL CEILINGS

TOLERANCES

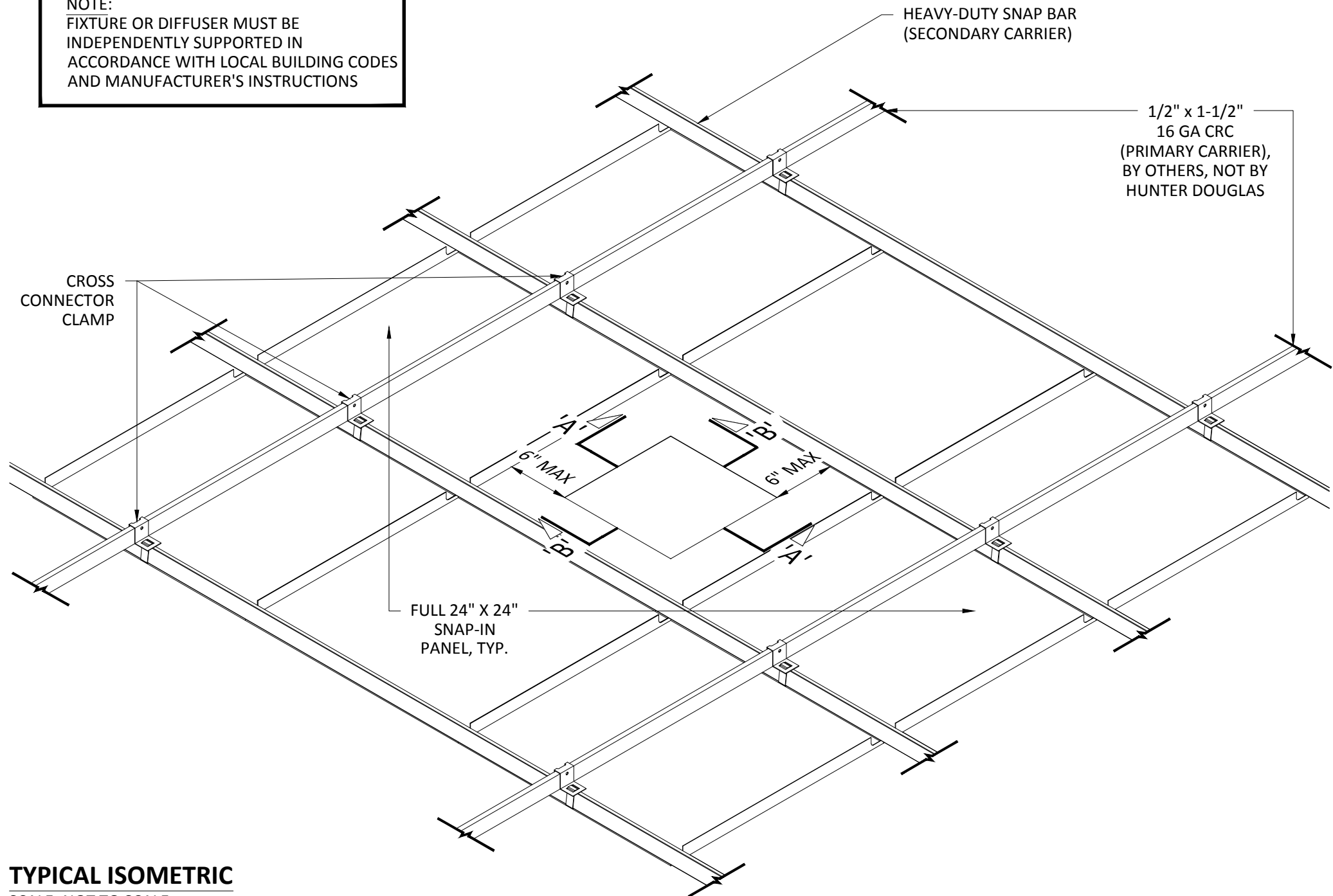
(unless noted otherwise)

DECIMAL: .0 +/- .060
.00 +/- .030
.000 +/- .010
FRACTIONAL: +/- 1/32"
ANGULAR: +/- 1/2° (.5°)

2'-0" X 2'-0" FIXTURE OPENING SPECIFICATIONS

PROJECT: SNAP-IN PRODUCT SPECIFICATIONS
DRAWING NUMBER: SNAP-IN-A1.9
PART NUMBER: N/A
SCALE: AS SHOWN
DATE: 7/2/14
DRAWN BY: HDAP ENGINEERING

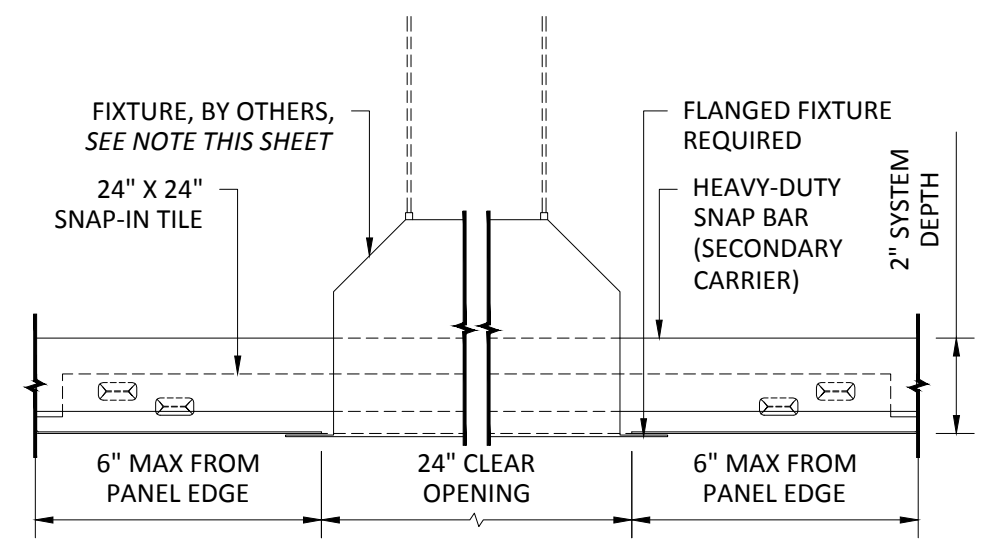
NOTE:
FIXTURE OR DIFFUSER MUST BE
INDEPENDENTLY SUPPORTED IN
ACCORDANCE WITH LOCAL BUILDING CODES
AND MANUFACTURER'S INSTRUCTIONS



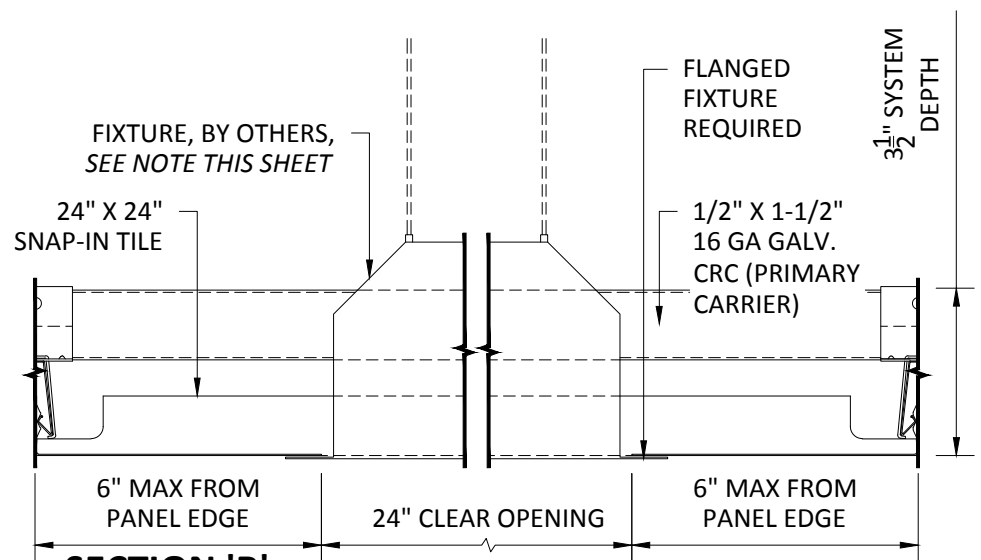
TYPICAL ISOMETRIC
SCALE: NOT TO SCALE

INTERIOR INSTALLATION

*HANGER WIRE OMITTED FOR CLARITY



SECTION 'A'
SCALE: 3" = 1'-0"



SECTION 'B'
SCALE: 3" = 1'-0"

HunterDouglasContract

CEILINGS

5015 Oakbrook Parkway, Suite 100
Norcross, GA 30093
800-366-4327 / 770-806-9557
fax: 770-806-0214

All rights reserved. This drawing is the property of Hunter Douglas and may not be copied or multiplied neither wholly nor partly. It may not be submitted for perusal to third parties either.

www.hunterdouglascontract.com

SPECIFICATIONS
(unless noted otherwise)
MATERIAL: 0.032" OR 0.040" ALUMINUM SNAP-IN PANEL
24 GA GALV. HEAVY-DUTY SNAP BAR (SECONDARY CARRIER)
FINISH: PAINT / POWDER COAT / LUXACOTE
PERFORATION: SEE DETAIL A1.1 THIS SET

LUXALON
METAL CEILINGS

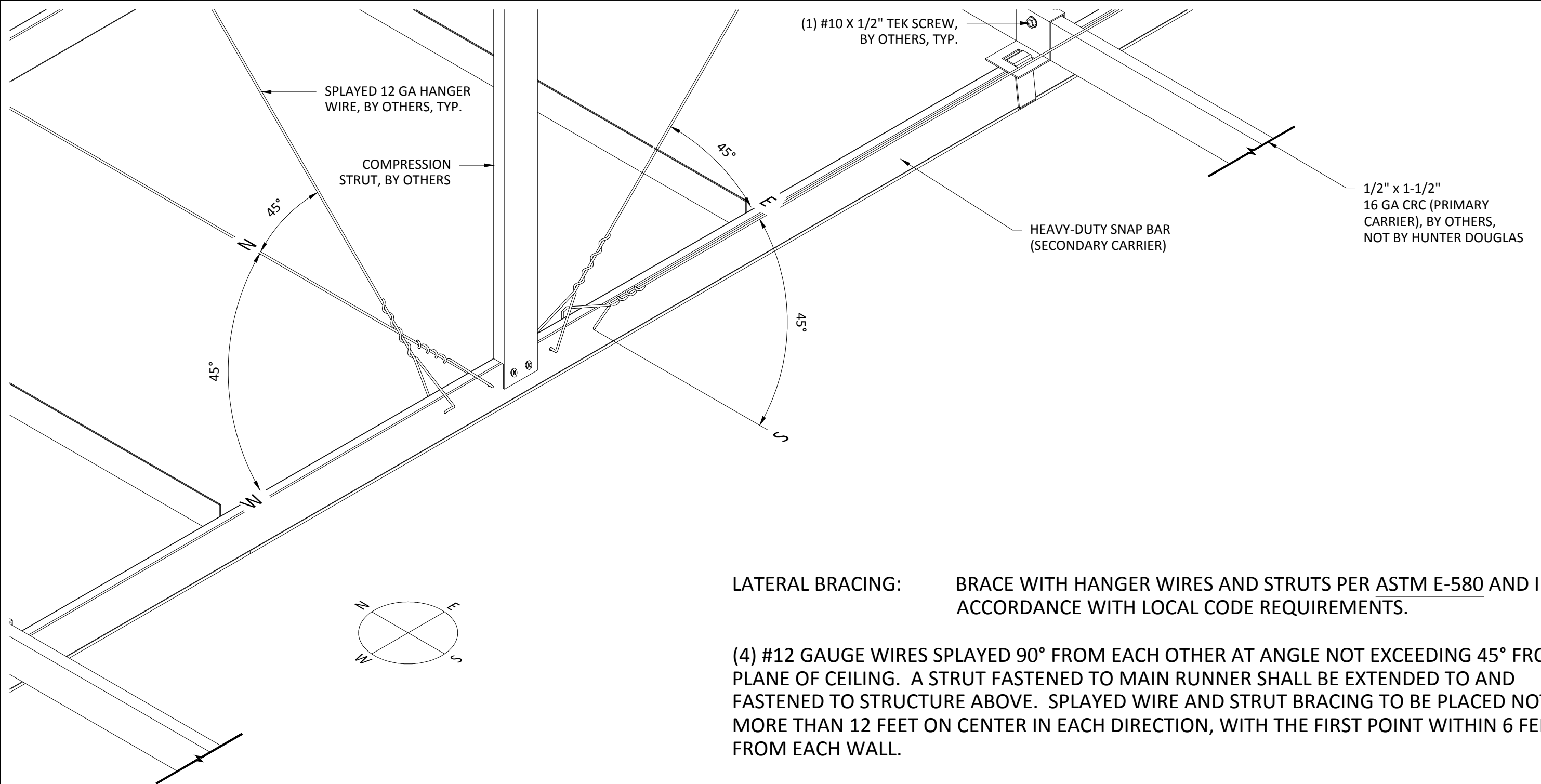
WoodWright
WOOD CEILINGS

Techstyle
ACOUSTICAL CEILINGS

TOLERANCES
(unless noted otherwise)
DECIMAL: .0 +/- .060
.00 +/- .030
.000 +/- .010
FRACTIONAL: +/- 1/32"
ANGULAR: +/- 1/2° (.5°)

FIELD CUT PANEL OPENING SPECIFICATIONS

PROJECT: SNAP-IN PRODUCT SPECIFICATIONS
DRAWING NUMBER: SNAP-IN-A1.10
PART NUMBER: N/A
SCALE: AS SHOWN
DATE: 7/2/14
DRAWN BY: HDAP ENGINEERING



LATERAL BRACING: BRACE WITH HANGER WIRES AND STRUTS PER ASTM E-580 AND IN ACCORDANCE WITH LOCAL CODE REQUIREMENTS.

(4) #12 GAUGE WIRES SPLAYED 90° FROM EACH OTHER AT ANGLE NOT EXCEEDING 45° FROM PLANE OF CEILING. A STRUT FASTENED TO MAIN RUNNER SHALL BE EXTENDED TO AND FASTENED TO STRUCTURE ABOVE. SPLAYED WIRE AND STRUT BRACING TO BE PLACED NOT MORE THAN 12 FEET ON CENTER IN EACH DIRECTION, WITH THE FIRST POINT WITHIN 6 FEET FROM EACH WALL.

HunterDouglasContract

CEILINGS

5015 Oakbrook Parkway, Suite 100
Norcross, GA 30093
800-366-4327 / 770-806-9557
fax: 770-806-0214

All rights reserved. This drawing is the property of Hunter Douglas and may not be copied or multiplied neither wholly nor partly. It may not be submitted for perusal to third parties either.

www.hunterdouglascontract.com

SPECIFICATIONS

(unless noted otherwise)

MATERIAL: 0.032" OR 0.040" ALUMINUM SNAP-IN PANEL
24 GA GALV. HEAVY-DUTY SNAP BAR (SECONDARY CARRIER)
FINISH: PAINT / POWDER COAT / LUXACOTE
PERFORATION: SEE DETAIL A1.1 THIS SET

TOLERANCES

(unless noted otherwise)

DECIMAL: .0 +/- .060
.00 +/- .030
.000 +/- .010
FRACTIONAL: +/- 1/32"
ANGULAR: +/- 1/2° (.5°)

LUXALON
METAL CEILINGS

WoodWright
WOOD CEILINGS

Techstyle
ACOUSTICAL CEILINGS

SEISMIC SPECIFICATIONS

PROJECT: SNAP-IN PRODUCT SPECIFICATIONS
DRAWING NUMBER: SNAP-IN-A1.11
PART NUMBER: N/A
SCALE: AS SHOWN
DATE: 7/2/14
DRAWN BY: HDAP ENGINEERING