

12 GA HANGER WIRE, BY  
OTHERS, NOT BY HUNTER  
DOUGLAS. SEE DETAIL A1.5

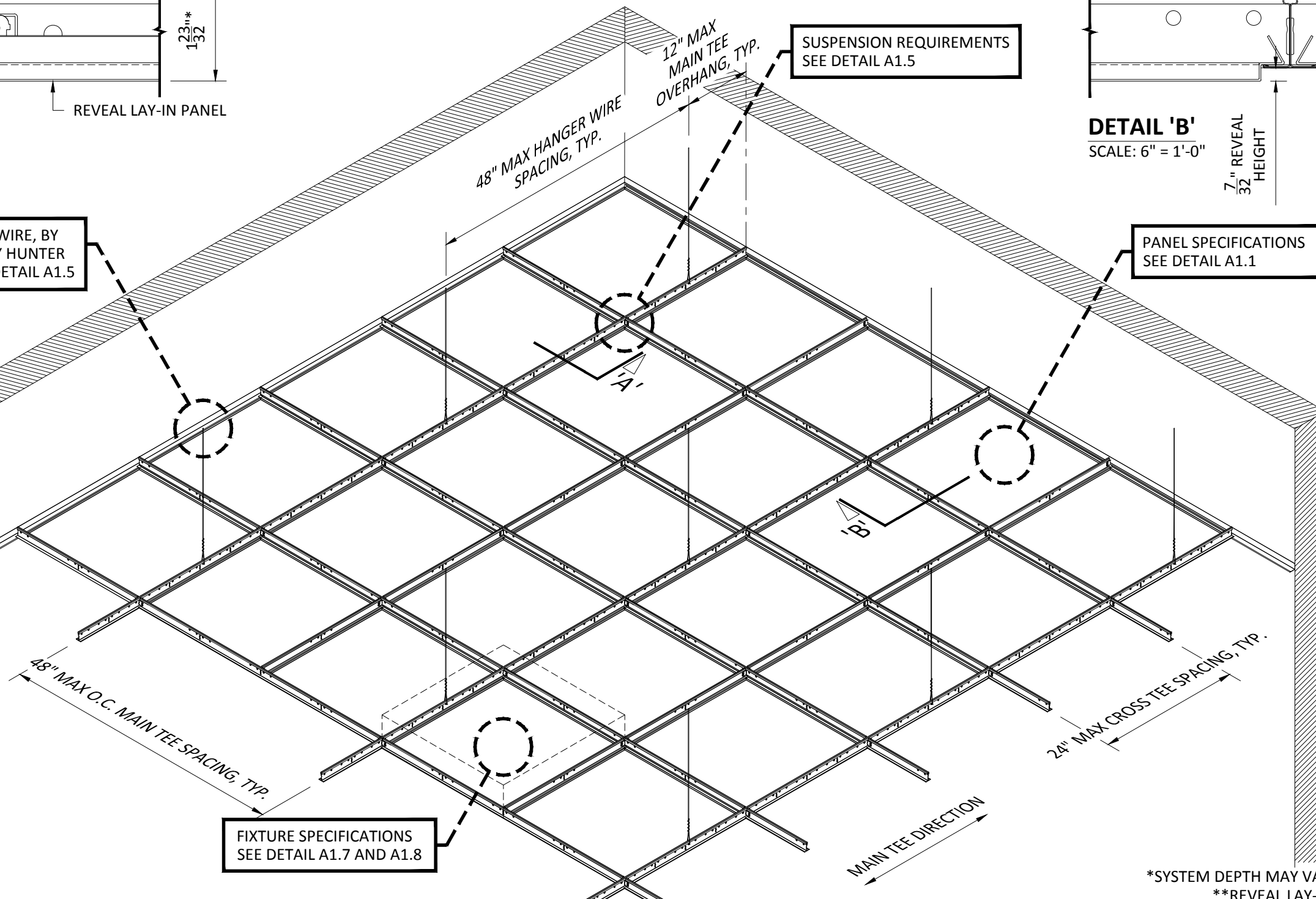
SUSPENSION REQUIREMENTS  
SEE DETAIL A1.5

PANEL SPECIFICATIONS  
SEE DETAIL A1.1

WALL TRIM CONDITIONS  
SEE DETAIL A1.6

FIXTURE SPECIFICATIONS  
SEE DETAIL A1.7 AND A1.8

## INTERIOR INSTALLATION



\*SYSTEM DEPTH MAY VARY DEPENDING ON HEIGHT OF GRID  
\*\*REVEAL LAY-IN PANELS FOR 15/16" GRID SHOWN

# HunterDouglasContract

## CEILINGS

5015 Oakbrook Parkway, Suite 100  
Norcross, GA 30093  
800-366-4327 / 770-806-9557  
fax: 770-806-0214

All rights reserved. This drawing  
is the property of Hunter  
Douglas and may not be copied  
or multiplied neither wholly nor  
partly. It may not be submitted  
for perusal to third parties  
either.

www.hunterdouglascontract.com

### SPECIFICATIONS

(unless noted otherwise)  
MATERIAL: 0.032" OR 0.040" ALUMINUM LAY-IN PANEL

FINISH: PAINT / POWDER COAT / DECORATED WOOD FINISH /  
WOOD VENEER

PERFORATION: SEE DETAIL A1.1 THIS SET

**LUXALON**  
METAL CEILINGS

**WoodWright**  
WOOD CEILINGS

**Techstyle**  
ACOUSTICAL CEILINGS

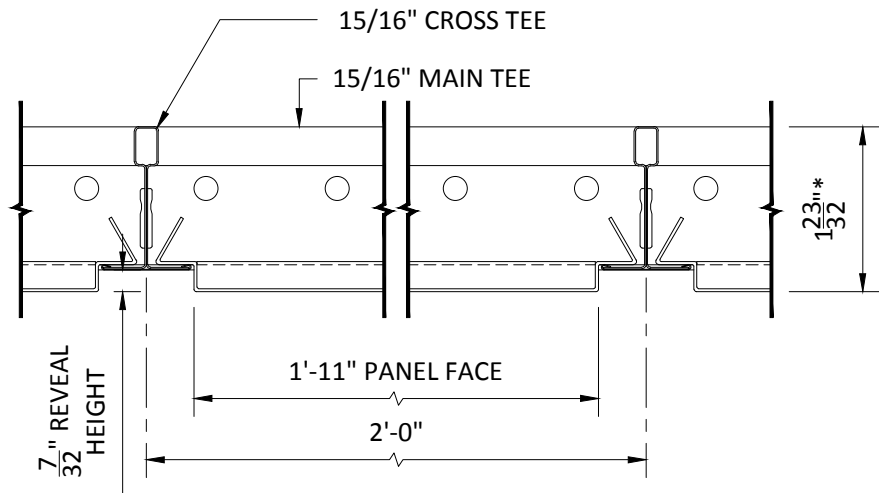
### TOLERANCES

(unless noted otherwise)

DECIMAL: .0 +/- .060  
.00 +/- .030  
.000 +/- .010  
FRACTIONAL: +/- 1/32"  
ANGULAR: +/- 1/2° (.5°)

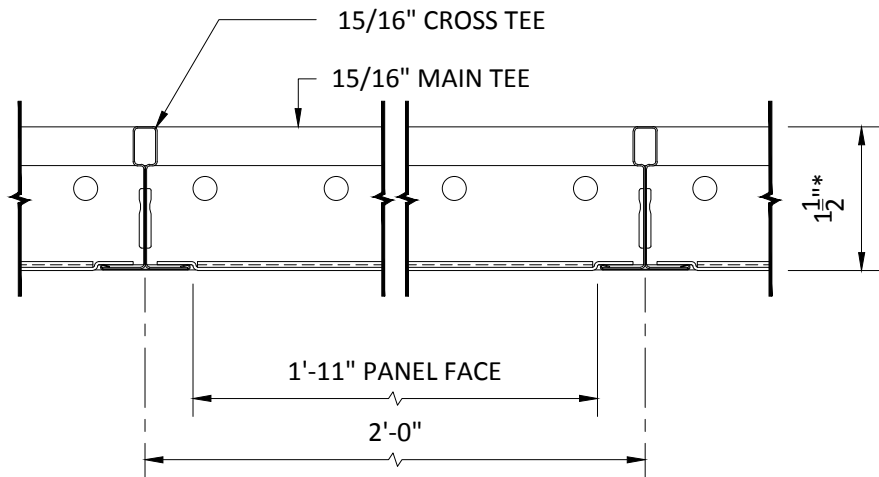
## OVERALL ISOMETRIC VIEW

PROJECT: LAY-IN PRODUCT SPECIFICATIONS  
DRAWING NUMBER: LAY-IN-A1.0  
PART NUMBER: N/A  
SCALE: AS SHOWN  
DATE: 8/20/14  
DRAWN BY: HDAP ENGINEERING



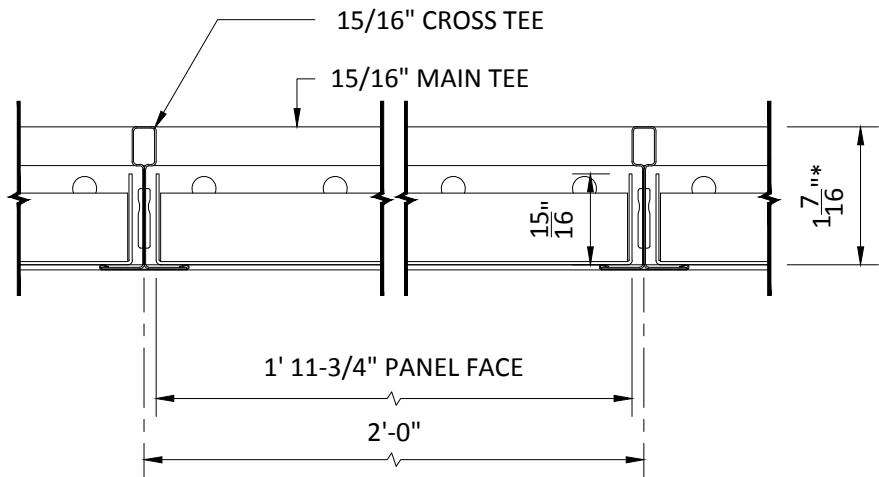
REVEAL LAY-IN

SCALE: 6" = 1'-0"



FLUSH REVEAL LAY-IN

SCALE: 6" = 1'-0"



SQUARE LAY-IN

SCALE: 6" = 1'-0"

- PANEL CONFIGURATIONS:
- 24" BY 24" AND 24" BY 48" PANEL SIZES
  - OTHER SIZES AVAILABLE, CONTACT HUNTER DOUGLAS

- MATERIAL THICKNESS
- LAY-IN TILE: .032" ALUMINUM
  - LAY-IN PLANK: .032" OR .040" ALUMINUM

- PANEL FINISHES
- PAINTED & POWDER COATED
  - DECORATED WOOD FINISH (POWDER COATED)
  - WOOD VENEER
  - SEE TABLE BELOW FOR PERFORATION OPTIONS

HUNTER DOUGLAS LAY-IN PANELS ARE DESCRIBED AS METAL PANELS 24" TO 48" IN LENGTH. CONSTRUCTED AS DETAILED IN THIS SET. LAY-IN PANELS OR PLANKS ARE DESIGNED TO BE INSTALLED ON 9/16" OR 15/16" T-GRID SUSPENSION SYSTEM.

FOR PANEL SIZES OTHER THAN 24" BY 24" AND 24" BY 48", PLEASE CONTACT HUNTER DOUGLAS.

PERFORATION OPTIONS*							
PERFORATION	MAX LENGTH	PERFORATION	MAX LENGTH	PERFORATION	MAX LENGTH	PERFORATION	MAX LENGTH
102 (14.0% OPEN)	120"	112 (7.0% OPEN)	120"	150 (4.0% OPEN)	120"	315 (6.25% OPEN)	120"
103 (20.0% OPEN)	120"	114 (5.0% OPEN)	120"	185 (3.1% OPEN)	24"	350 (70.0% OPEN)	24"
106 (16.0% OPEN)	120"	119 (8.0% OPEN)	120"	201 (19.6% OPEN)	120"	355 (18.0% OPEN)	120"
107 (28.0% OPEN)	72"**	122 (5.5% OPEN)	120"	202 (5.43% OPEN)	120"	375 (25.0% OPEN)	120"
109 (36.0% OPEN)	72"	125 (13.0% OPEN)	120"	301 (11.0% OPEN)	120"	625 (19.5% OPEN)	120"
110 (36.0% OPEN)	60"	127 (25.0% OPEN)	96"	312 (33.0% OPEN)	60"	750 (19.2% OPEN)	120"
111 (4.0% OPEN)	120"	132 (20.0% OPEN)	72"	314 (25.0% OPEN)	120"		
*1/4" NOM. NON-PERFORATED BORDER, TYPICAL				**PANEL SIZE LIMITED TO 8 SQUARE FEET			

INTERIOR INSTALLATION

\*SYSTEM DEPTH MAY VARY DEPENDING ON HEIGHT OF GRID  
\*\*LAY-IN PANELS FOR 15/16" GRID SHOWN

HunterDouglasContract

CEILINGS

5015 Oakbrook Parkway, Suite 100  
Norcross, GA 30093  
800-366-4327 / 770-806-9557  
fax: 770-806-0214

All rights reserved. This drawing is the property of Hunter Douglas and may not be copied or multiplied neither wholly nor partly. It may not be submitted for perusal to third parties either.

www.hunterdouglascontract.com

SPECIFICATIONS  
(unless noted otherwise)  
MATERIAL: 0.032" OR 0.040" ALUMINUM LAY-IN PANEL  
FINISH: PAINT / POWDER COAT / DECORATED WOOD FINISH / WOOD VENEER  
PERFORATION: SEE TABLE THIS DETAIL

LUXALON<sup>®</sup>  
METAL CEILINGS

WoodWright<sup>®</sup>  
WOOD CEILINGS

TOLERANCES  
(unless noted otherwise)  
DECIMAL: .0 +/- .060  
.00 +/- .030  
.000 +/- .010  
FRACTIONAL: +/- 1/32"  
ANGULAR: +/- 1/2° (.5°)

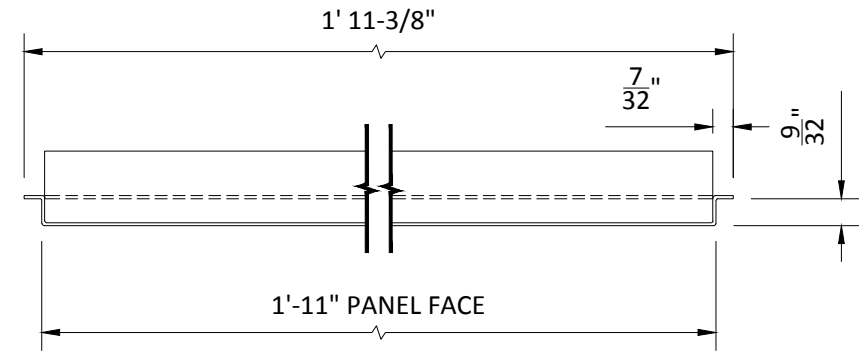
Techstyle<sup>®</sup>  
ACOUSTICAL CEILINGS

PANEL SPECIFICATIONS

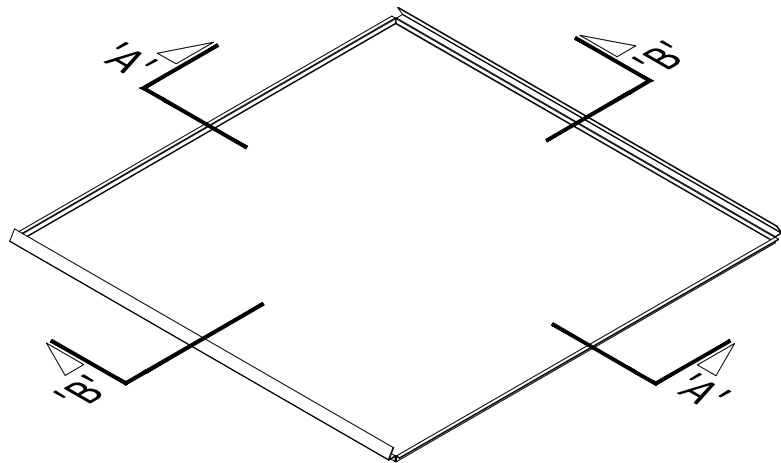
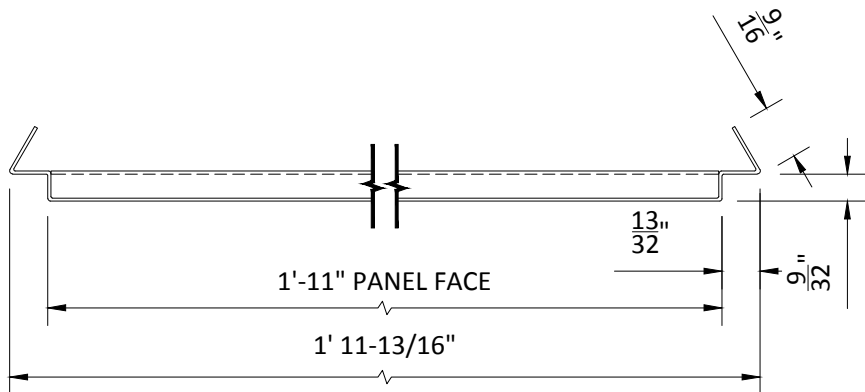
PROJECT: LAY-IN PRODUCT SPECIFICATIONS  
DRAWING NUMBER: LAY-IN-A1.1  
PART NUMBER: N/A  
SCALE: AS SHOWN  
DATE: 8/20/14  
DRAWN BY: HDAP ENGINEERING

2' x 2' PANEL

SECTION 'A'  
SCALE: 6" = 1'-0"

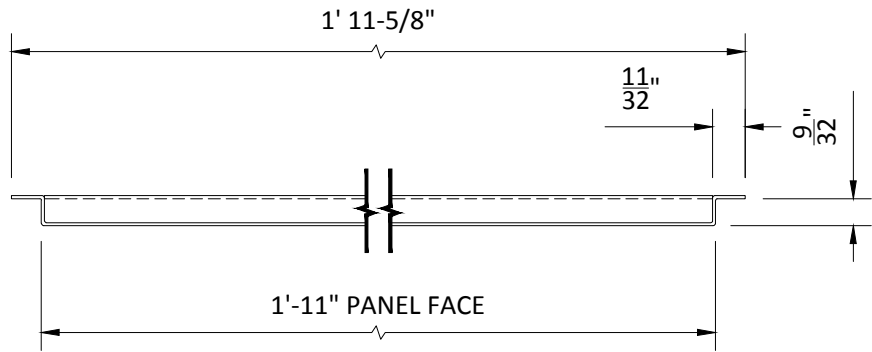


SECTION 'B'  
SCALE: 6" = 1'-0"

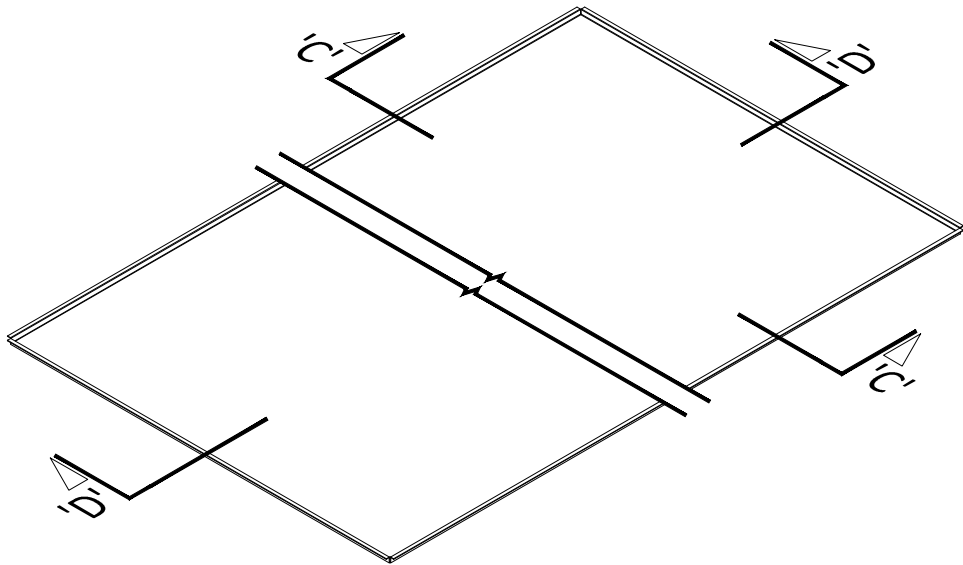
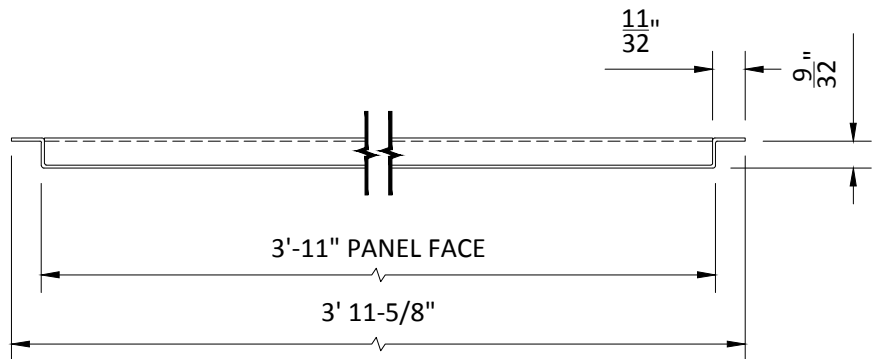


2' x 4' PANEL

SECTION 'C'  
SCALE: 6" = 1'-0"



SECTION 'D'  
SCALE: 6" = 1'-0"



INTERIOR INSTALLATION

\*REVEAL LAY-IN PANELS FOR 15/16" GRID SHOWN

**HunterDouglasContract**

CEILINGS

5015 Oakbrook Parkway, Suite 100  
Norcross, GA 30093  
800-366-4327 / 770-806-9557  
fax: 770-806-0214

*All rights reserved. This drawing is the property of Hunter Douglas and may not be copied or multiplied neither wholly nor partly. It may not be submitted for perusal to third parties either.*

www.hunterdouglascontract.com

SPECIFICATIONS

(unless noted otherwise)

MATERIAL: 0.032" OR 0.040" ALUMINUM LAY-IN PANEL

FINISH: PAINT / POWDER COAT / DECORATED WOOD FINISH / WOOD VENEER

PERFORATION: SEE DETAIL A1.1 THIS SET

**LUXALON**  
METAL CEILINGS

**WoodWright**  
WOOD CEILINGS

TOLERANCES

(unless noted otherwise)

DECIMAL: .0 +/- .060  
.00 +/- .030  
.000 +/- .010

FRACTIONAL: +/- 1/32"  
ANGULAR: +/- 1/2° (.5°)

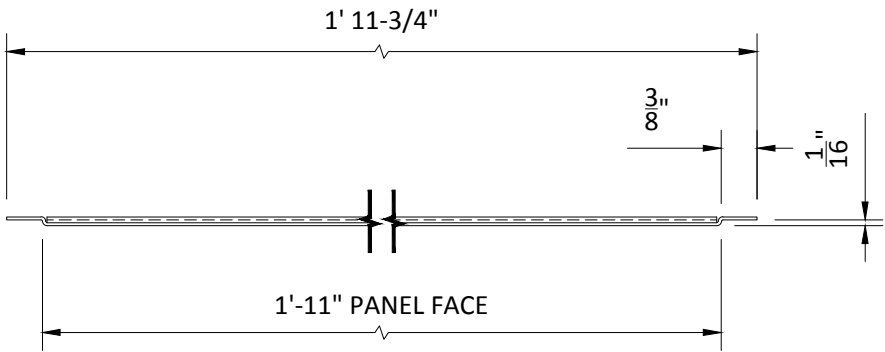
**Techstyle**  
ACOUSTICAL CEILINGS

REVEAL LAY-IN PANEL

PROJECT: LAY-IN PRODUCT SPECIFICATIONS  
DRAWING NUMBER: LAY-IN-A1.2  
PART NUMBER: N/A  
SCALE: AS SHOWN  
DATE: 8/20/14  
DRAWN BY: HDAP ENGINEERING

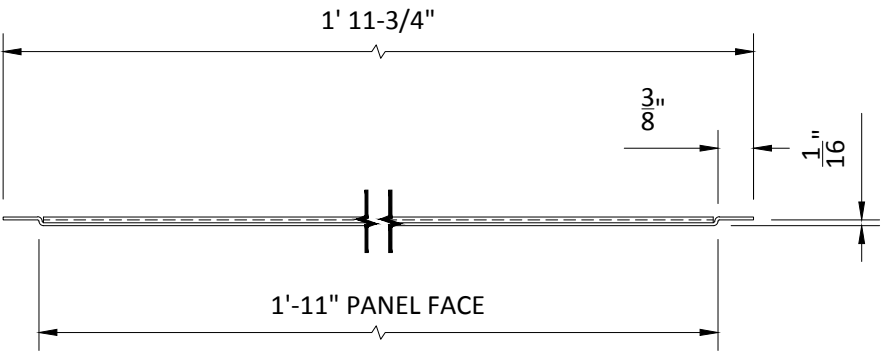
2' x 2' PANEL

SECTION 'A'  
SCALE: 6" = 1'-0"

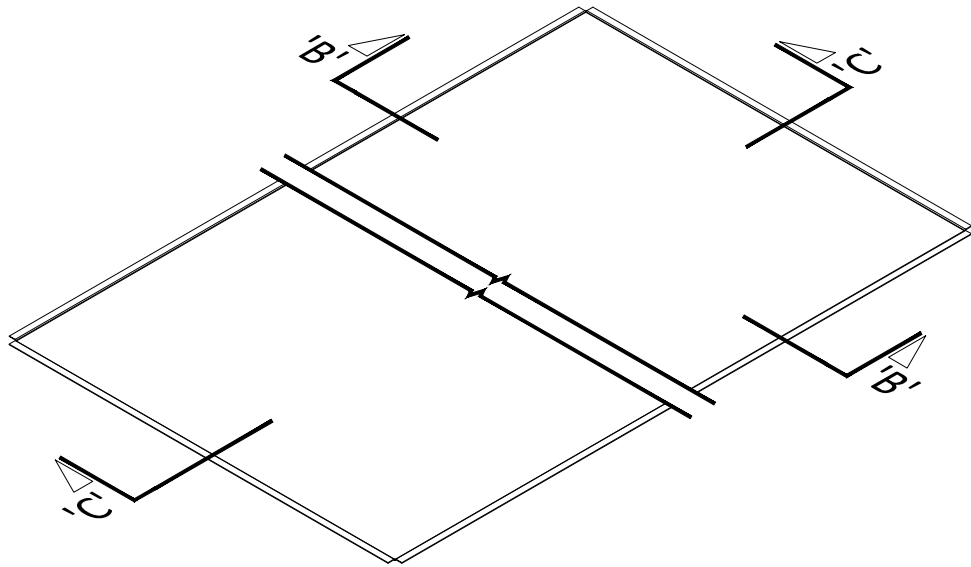
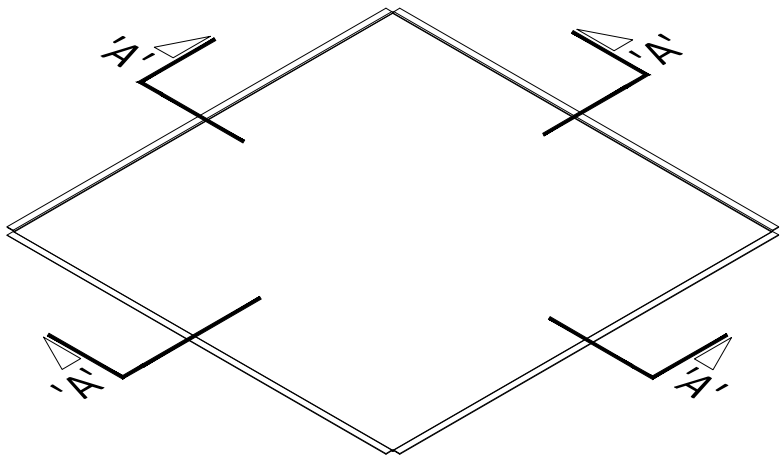
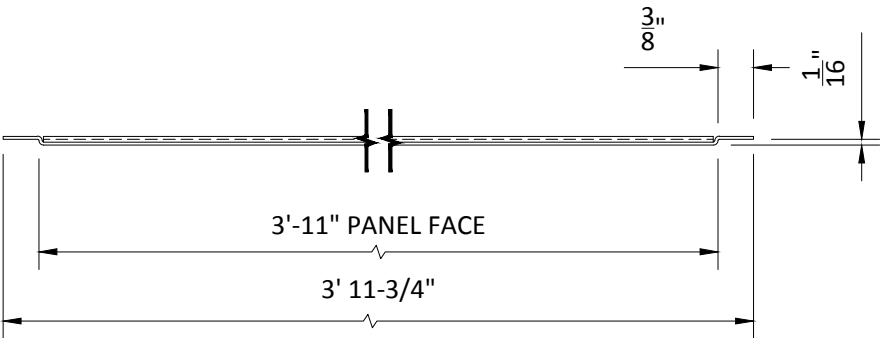


2' x 4' PANEL

SECTION 'B'  
SCALE: 6" = 1'-0"



SECTION 'C'  
SCALE: 6" = 1'-0"



INTERIOR INSTALLATION

\*FLUSH REVEAL LAY-IN PANELS FOR 15/16" GRID SHOWN

**HunterDouglasContract**

CEILINGS

5015 Oakbrook Parkway, Suite 100  
Norcross, GA 30093  
800-366-4327 / 770-806-9557  
fax: 770-806-0214

*All rights reserved. This drawing is the property of Hunter Douglas and may not be copied or multiplied neither wholly nor partly. It may not be submitted for perusal to third parties either.*

www.hunterdouglascontract.com

SPECIFICATIONS

(unless noted otherwise)  
MATERIAL: 0.032" OR 0.040" ALUMINUM LAY-IN PANEL  
FINISH: PAINT / POWDER COAT / DECORATED WOOD FINISH / WOOD VENEER  
PERFORATION: SEE DETAIL A1.1 THIS SET

**LUXALON**  
METAL CEILINGS

**WoodWright**  
WOOD CEILINGS

TOLERANCES

(unless noted otherwise)  
DECIMAL: .0 +/- .060  
.00 +/- .030  
.000 +/- .010  
FRACTIONAL: +/- 1/32"  
ANGULAR: +/- 1/2° (.5°)

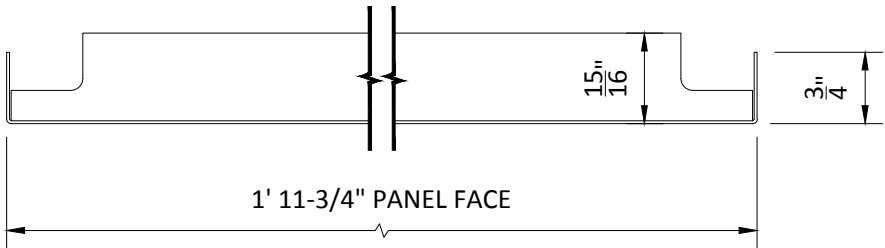
**Techstyle**  
ACOUSTICAL CEILINGS

FLUSH REVEAL LAY-IN PANEL

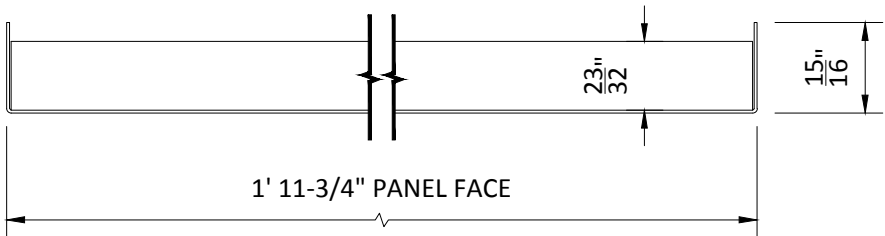
PROJECT: LAY-IN PRODUCT SPECIFICATIONS  
DRAWING NUMBER: LAY-IN-A1.3  
PART NUMBER: N/A  
SCALE: AS SHOWN  
DATE: 8/20/14  
DRAWN BY: HDAP ENGINEERING

2' x 2' PANEL

SECTION 'A'  
SCALE: 6" = 1'-0"

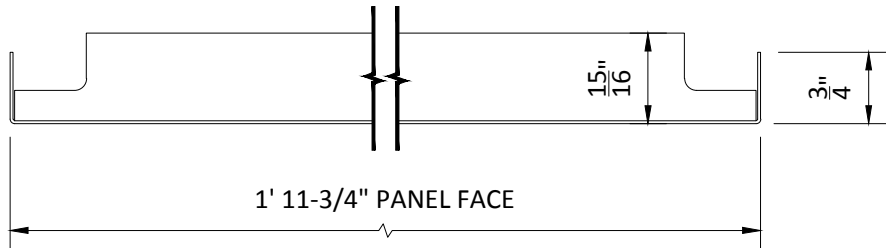


SECTION 'B'  
SCALE: 6" = 1'-0"

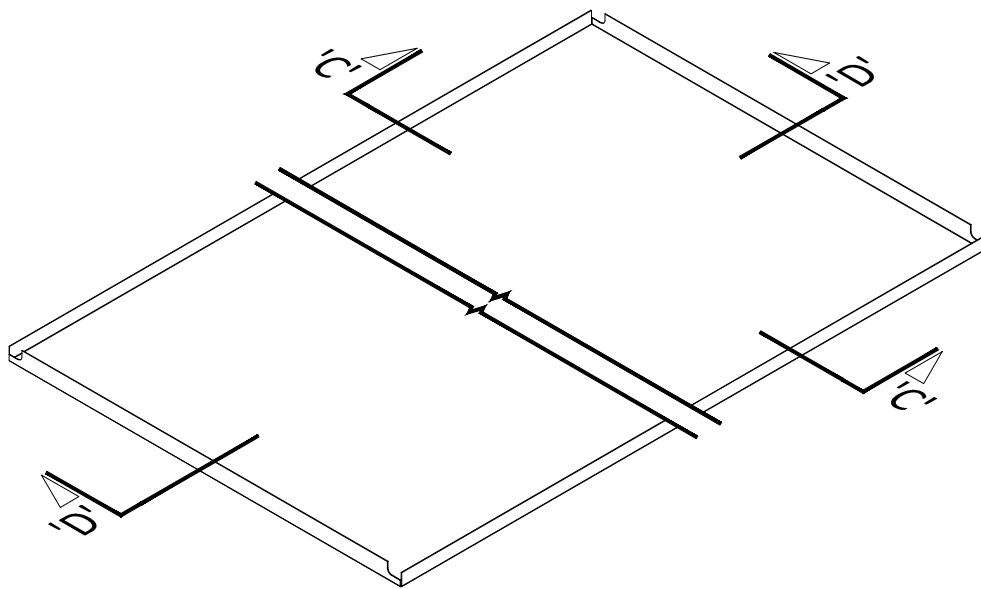
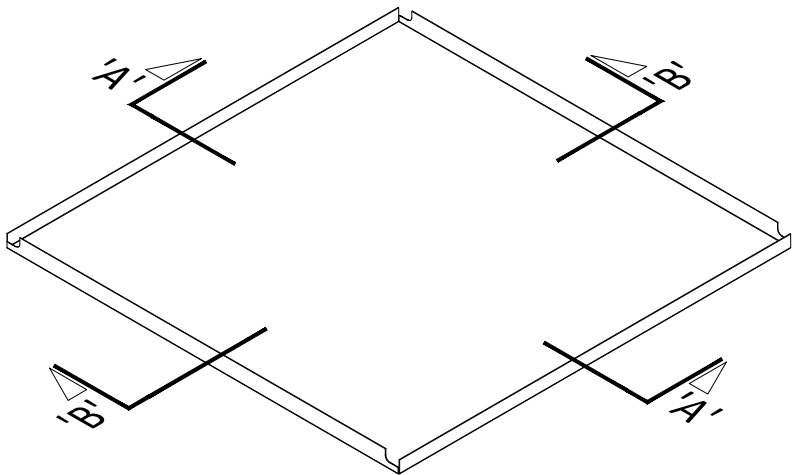
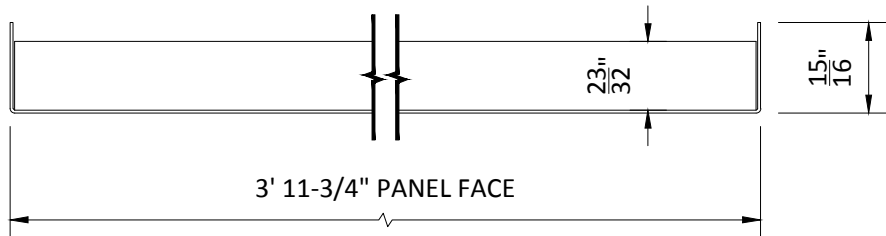


2' x 4' PANEL

SECTION 'C'  
SCALE: 6" = 1'-0"



SECTION 'D'  
SCALE: 6" = 1'-0"



INTERIOR INSTALLATION

\*SQUARE LAY-IN PANELS FOR 9/16" AND 15/16" GRID SHOWN

**HunterDouglasContract**

CEILINGS

5015 Oakbrook Parkway, Suite 100  
Norcross, GA 30093  
800-366-4327 / 770-806-9557  
fax: 770-806-0214

*All rights reserved. This drawing is the property of Hunter Douglas and may not be copied or multiplied neither wholly nor partly. It may not be submitted for perusal to third parties either.*

www.hunterdouglascontract.com

SPECIFICATIONS

(unless noted otherwise)

MATERIAL: 0.032" OR 0.040" ALUMINUM LAY-IN PANEL

FINISH: PAINT / POWDER COAT / DECORATED WOOD FINISH / WOOD VENEER

PERFORATION: SEE DETAIL A1.1 THIS SET

**LUXALON**  
METAL CEILINGS

**WoodWright**  
WOOD CEILINGS

TOLERANCES

(unless noted otherwise)

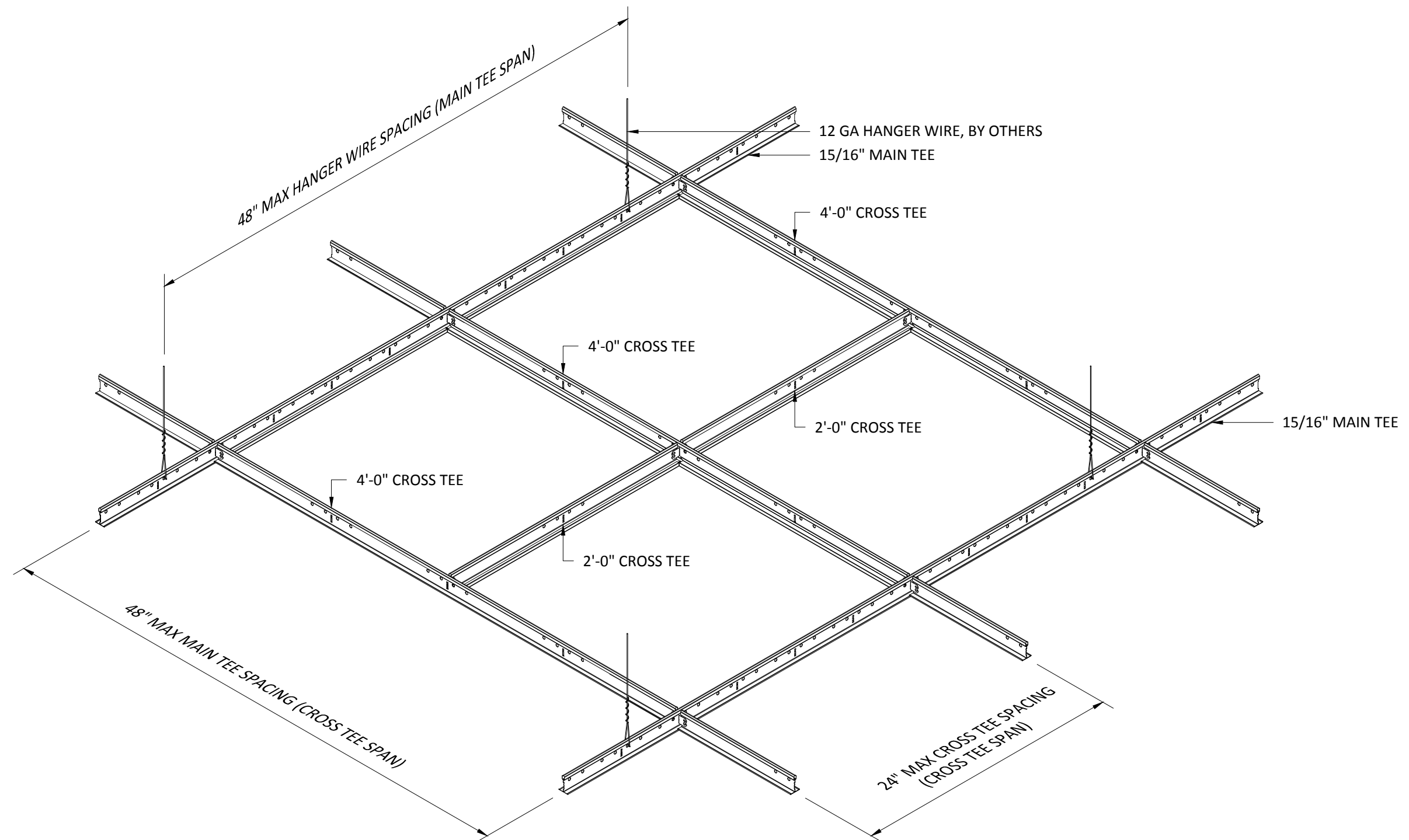
DECIMAL: .0 +/- .060  
.00 +/- .030  
.000 +/- .010

FRACTIONAL: +/- 1/32"  
ANGULAR: +/- 1/2° (.5°)

**Techstyle**  
ACOUSTICAL CEILINGS

SQUARE LAY-IN PANEL

PROJECT: LAY-IN PRODUCT SPECIFICATIONS  
DRAWING NUMBER: LAY-IN-A1.4  
PART NUMBER: N/A  
SCALE: AS SHOWN  
DATE: 8/20/14  
DRAWN BY: HDAP ENGINEERING



## INTERIOR INSTALLATION

\*REVEAL LAY-IN PANELS FOR 15/16" GRID SHOWN

# HunterDouglasContract

## CEILINGS

5015 Oakbrook Parkway, Suite 100  
Norcross, GA 30093  
800-366-4327 / 770-806-9557  
fax: 770-806-0214

All rights reserved. This drawing is the property of Hunter Douglas and may not be copied or multiplied neither wholly nor partly. It may not be submitted for perusal to third parties either.

www.hunterdouglascontract.com

### SPECIFICATIONS

(unless noted otherwise)  
MATERIAL: 0.032" OR 0.040" ALUMINUM LAY-IN PANEL

FINISH: PAINT / POWDER COAT / DECORATED WOOD FINISH / WOOD VENEER

PERFORATION: SEE DETAIL A1.1 THIS SET

**LUXALON**  
METAL CEILINGS

**WoodWright**  
WOOD CEILINGS

### TOLERANCES

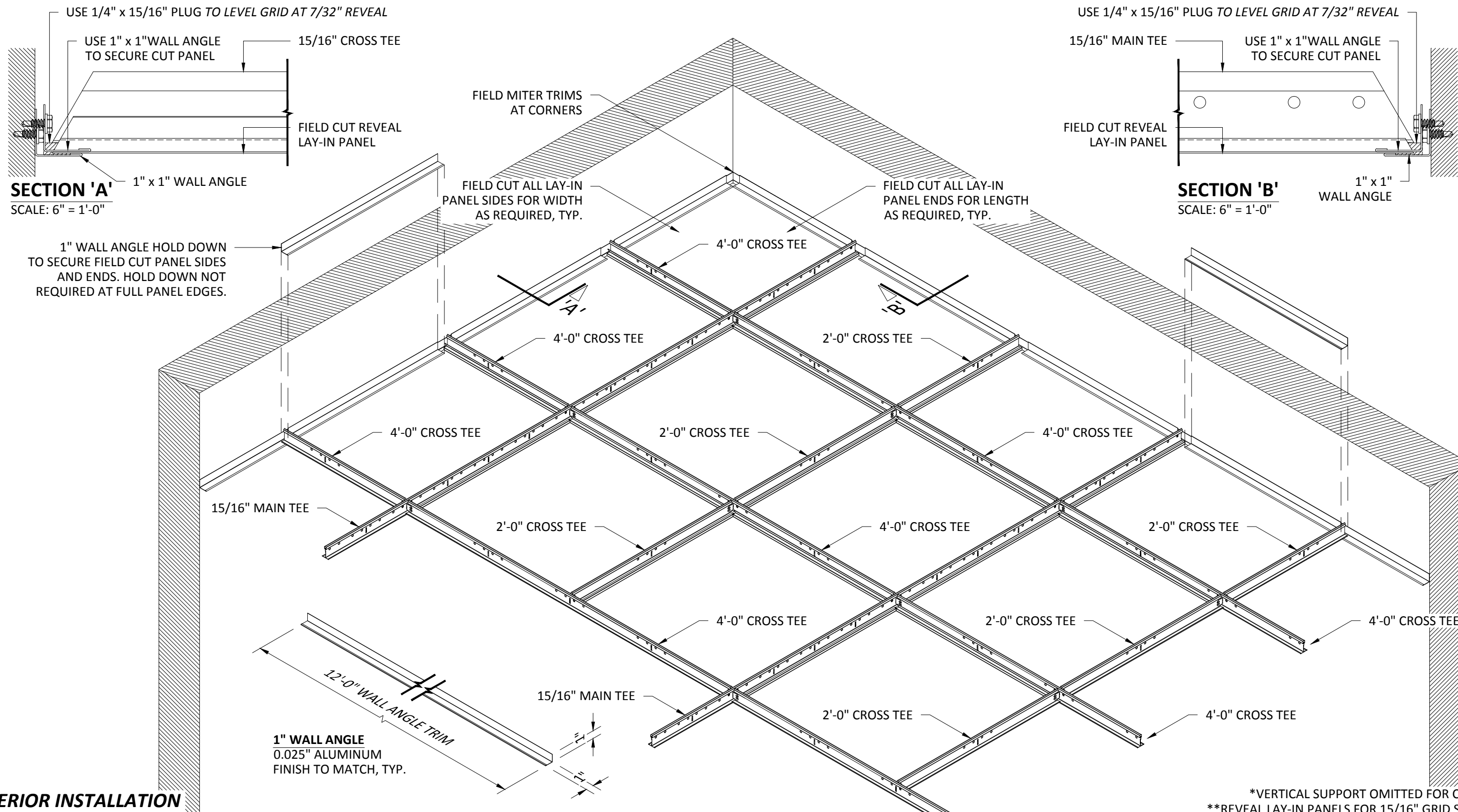
(unless noted otherwise)

DECIMAL: .0 +/- .060  
.00 +/- .030  
.000 +/- .010  
FRACTIONAL: +/-  $\frac{1}{32}$ "  
ANGULAR: +/-  $\frac{1}{2}^\circ$  (.5°)

**Techstyle**  
ACOUSTICAL CEILINGS

## SUSPENSION SPECIFICATIONS

PROJECT: LAY-IN PRODUCT SPECIFICATIONS  
DRAWING NUMBER: LAY-IN-A1.5  
PART NUMBER: N/A  
SCALE: AS SHOWN  
DATE: 8/20/14  
DRAWN BY: HDAP ENGINEERING



## INTERIOR INSTALLATION

\*VERTICAL SUPPORT OMITTED FOR CLARITY  
\*\*REVEAL LAY-IN PANELS FOR 15/16" GRID SHOWN

# HunterDouglasContract

## CEILINGS

5015 Oakbrook Parkway, Suite 100  
Norcross, GA 30093  
800-366-4327 / 770-806-9557  
fax: 770-806-0214

All rights reserved. This drawing is the property of Hunter Douglas and may not be copied or multiplied neither wholly nor partly. It may not be submitted for perusal to third parties either.

www.hunterdouglascontract.com

### SPECIFICATIONS

(unless noted otherwise)

MATERIAL: 0.032" OR 0.040" ALUMINUM LAY-IN PANEL

FINISH: PAINT / POWDER COAT / DECORATED WOOD FINISH / WOOD VENEER

PERFORATION: SEE DETAIL A1.1 THIS SET

### TOLERANCES

(unless noted otherwise)

DECIMAL: .0 +/- .060

.00 +/- .030

.000 +/- .010

FRACTIONAL: +/- 1/32"

ANGULAR: +/- 1/2° (.5°)

**LUXALON**  
METAL CEILINGS

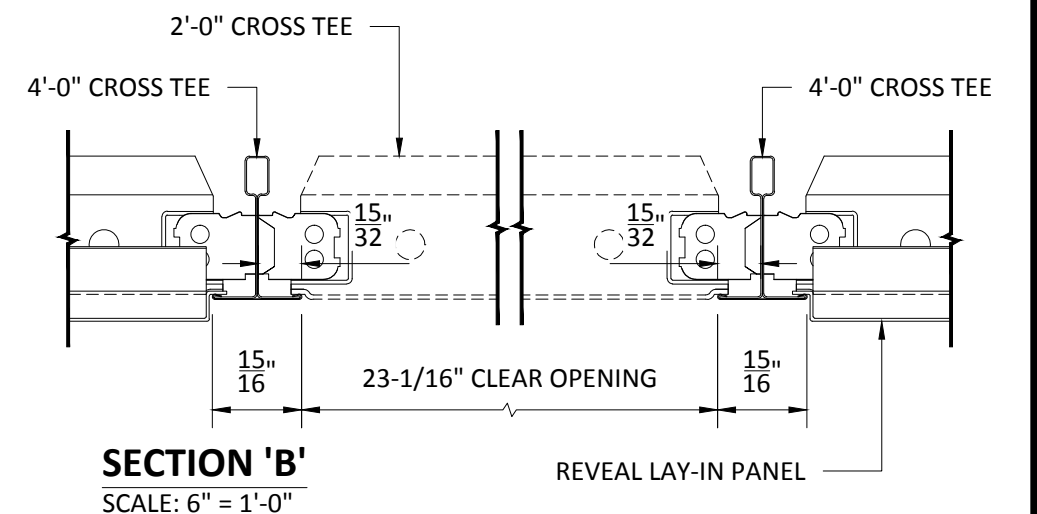
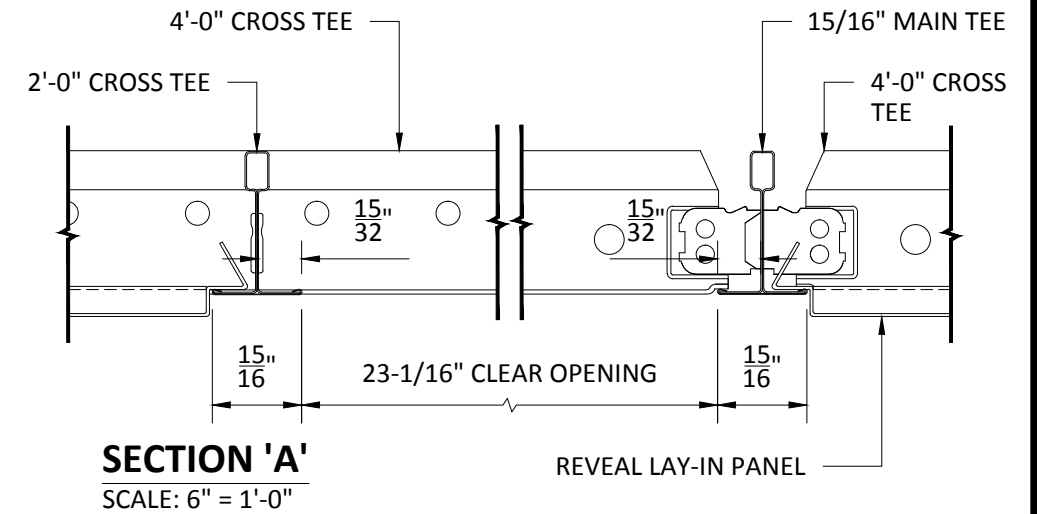
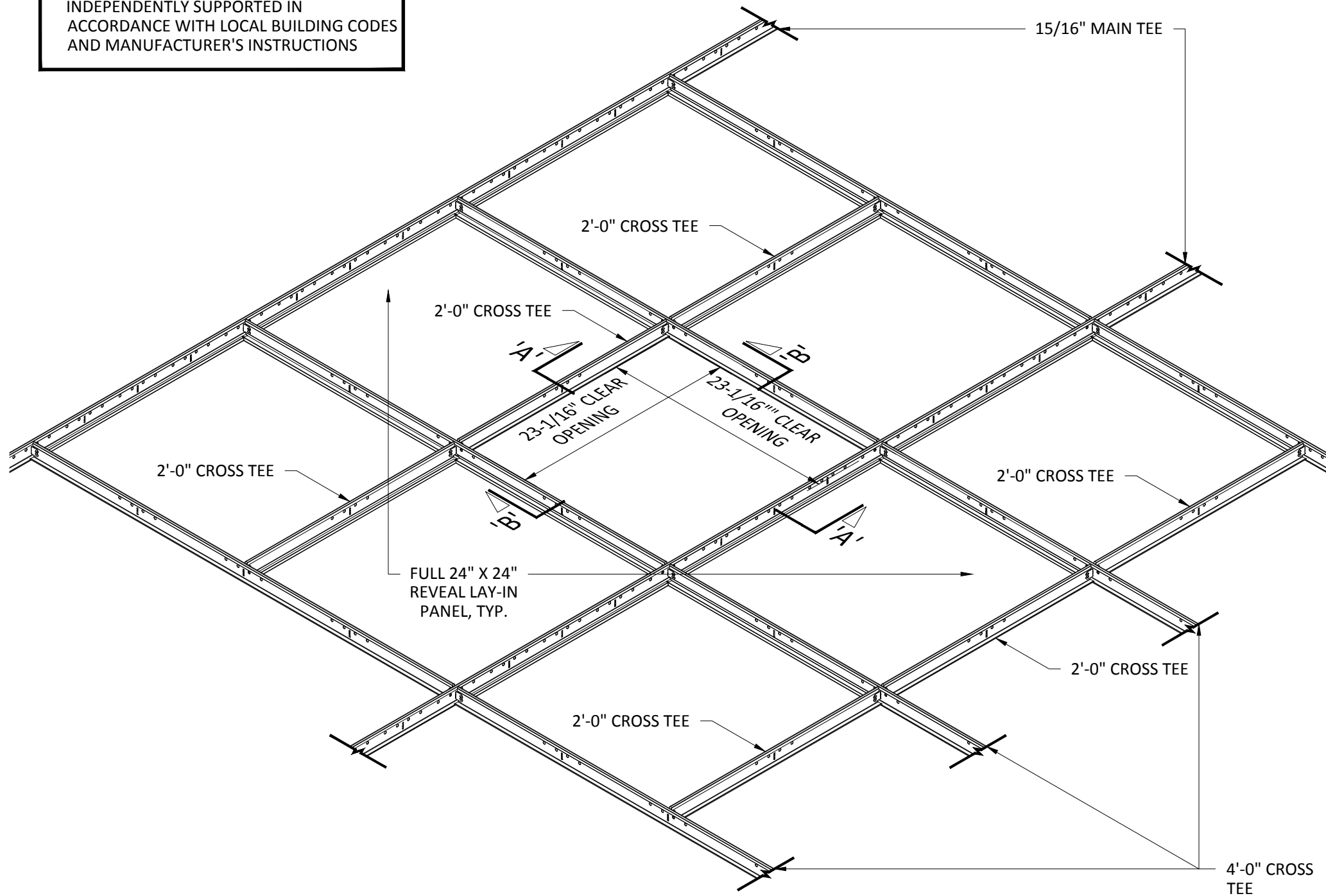
**WoodWright**  
WOOD CEILINGS

**Techstyle**  
ACOUSTICAL CEILINGS

## WALL TRIM SPECIFICATIONS

PROJECT: LAY-IN PRODUCT SPECIFICATIONS  
DRAWING NUMBER: LAY-IN-A1.6  
PART NUMBER: N/A  
SCALE: AS SHOWN  
DATE: 8/20/14  
DRAWN BY: HDAP ENGINEERING

NOTE:  
FIXTURE OR DIFFUSER MUST BE  
INDEPENDENTLY SUPPORTED IN  
ACCORDANCE WITH LOCAL BUILDING CODES  
AND MANUFACTURER'S INSTRUCTIONS



## INTERIOR INSTALLATION

\*VERTICAL SUPPORT OMITTED FOR CLARITY  
\*\*REVEAL LAY-IN PANELS FOR 15/16" GRID SHOWN

# HunterDouglasContract

## CEILINGS

5015 Oakbrook Parkway, Suite 100  
Norcross, GA 30093  
800-366-4327 / 770-806-9557  
fax: 770-806-0214

All rights reserved. This drawing is the property of Hunter Douglas and may not be copied or multiplied neither wholly nor partly. It may not be submitted for perusal to third parties either.

www.hunterdouglascontract.com

### SPECIFICATIONS

(unless noted otherwise)  
MATERIAL: 0.032" OR 0.040" ALUMINUM LAY-IN PANEL  
FINISH: PAINT / POWDER COAT / DECORATED WOOD FINISH / WOOD VENEER  
PERFORATION: SEE DETAIL A1.1 THIS SET

**LUXALON**  
METAL CEILINGS

**WoodWright**  
WOOD CEILINGS

**Techstyle**  
ACOUSTICAL CEILINGS

### TOLERANCES

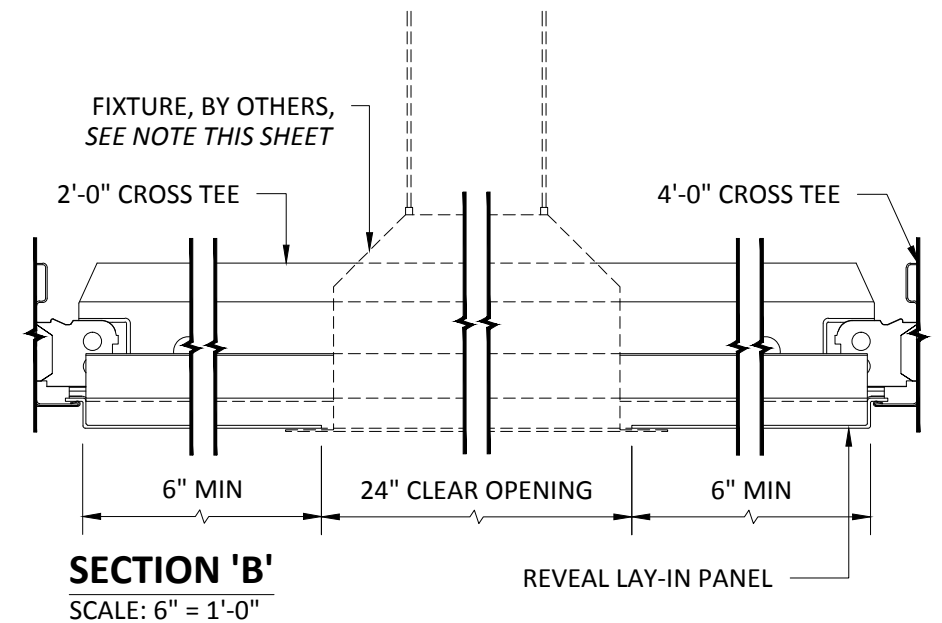
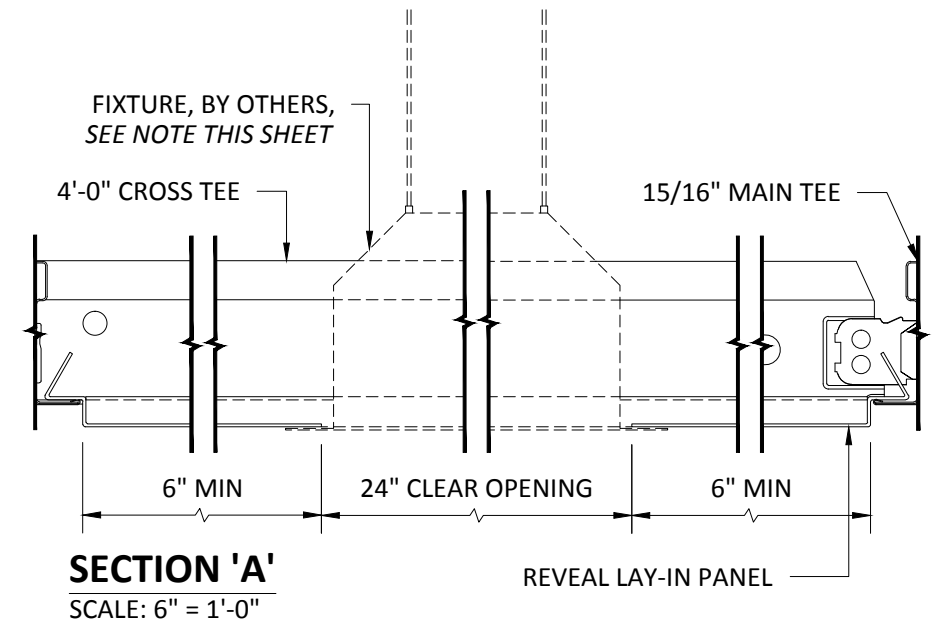
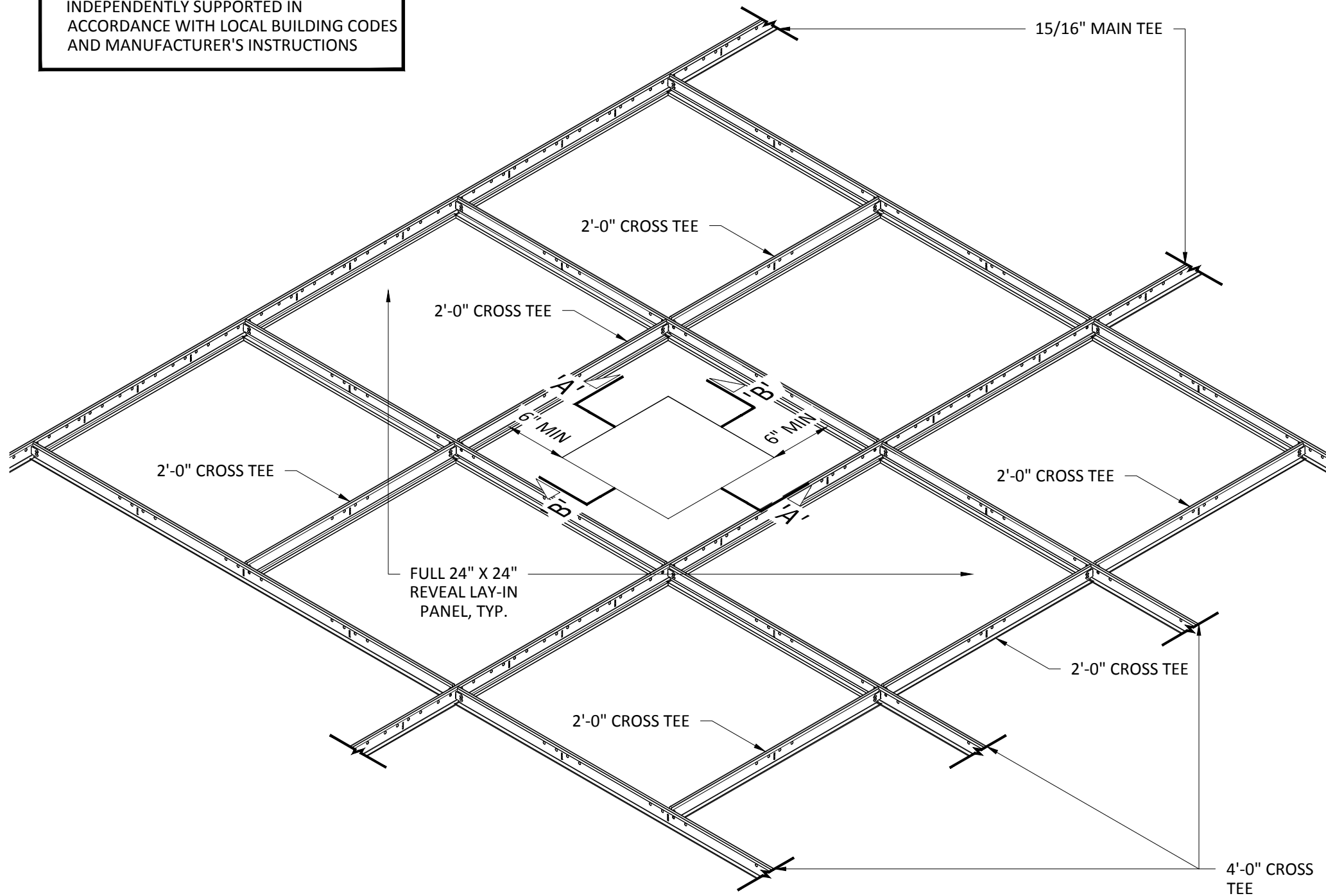
(unless noted otherwise)  
DECIMAL: .0 +/- .060  
.00 +/- .030  
.000 +/- .010  
FRACTIONAL: +/- 1/32"  
ANGULAR: +/- 1/2° (.5°)

## 2'-0" X 2'-0" FIXTURE OPENING SPECIFICATIONS

PROJECT: LAY-IN PRODUCT SPECIFICATIONS  
DRAWING NUMBER: LAY-IN-A1.7  
PART NUMBER: N/A  
SCALE: AS SHOWN  
DATE: 8/20/14  
DRAWN BY: HDAP ENGINEERING



NOTE:  
FIXTURE OR DIFFUSER MUST BE  
INDEPENDENTLY SUPPORTED IN  
ACCORDANCE WITH LOCAL BUILDING CODES  
AND MANUFACTURER'S INSTRUCTIONS



## INTERIOR INSTALLATION

\*VERTICAL SUPPORT OMITTED FOR CLARITY  
\*\*REVEAL LAY-IN PANELS FOR 15/16" GRID SHOWN

# HunterDouglasContract

## CEILINGS

5015 Oakbrook Parkway, Suite 100  
Norcross, GA 30093  
800-366-4327 / 770-806-9557  
fax: 770-806-0214

All rights reserved. This drawing  
is the property of Hunter  
Douglas and may not be copied  
or multiplied neither wholly nor  
partly. It may not be submitted  
for perusal to third parties  
either.

www.hunterdouglascontract.com

### SPECIFICATIONS

(unless noted otherwise)  
MATERIAL: 0.032" OR 0.040" ALUMINUM LAY-IN PANEL

FINISH: PAINT / POWDER COAT / DECORATED WOOD FINISH /  
WOOD VENEER

PERFORATION: SEE DETAIL A1.1 THIS SET

**LUXALON**  
METAL CEILINGS

**WoodWright**  
WOOD CEILINGS

**Techstyle**  
ACOUSTICAL CEILINGS

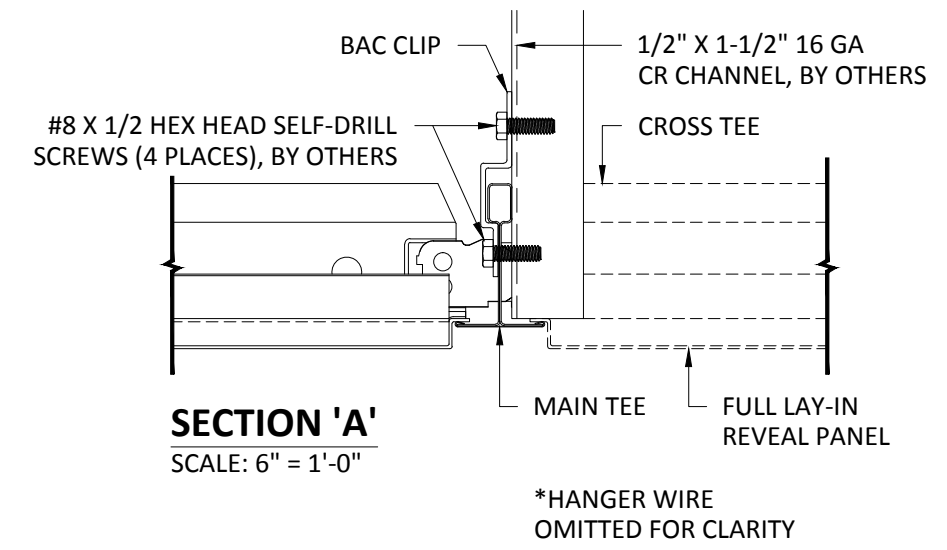
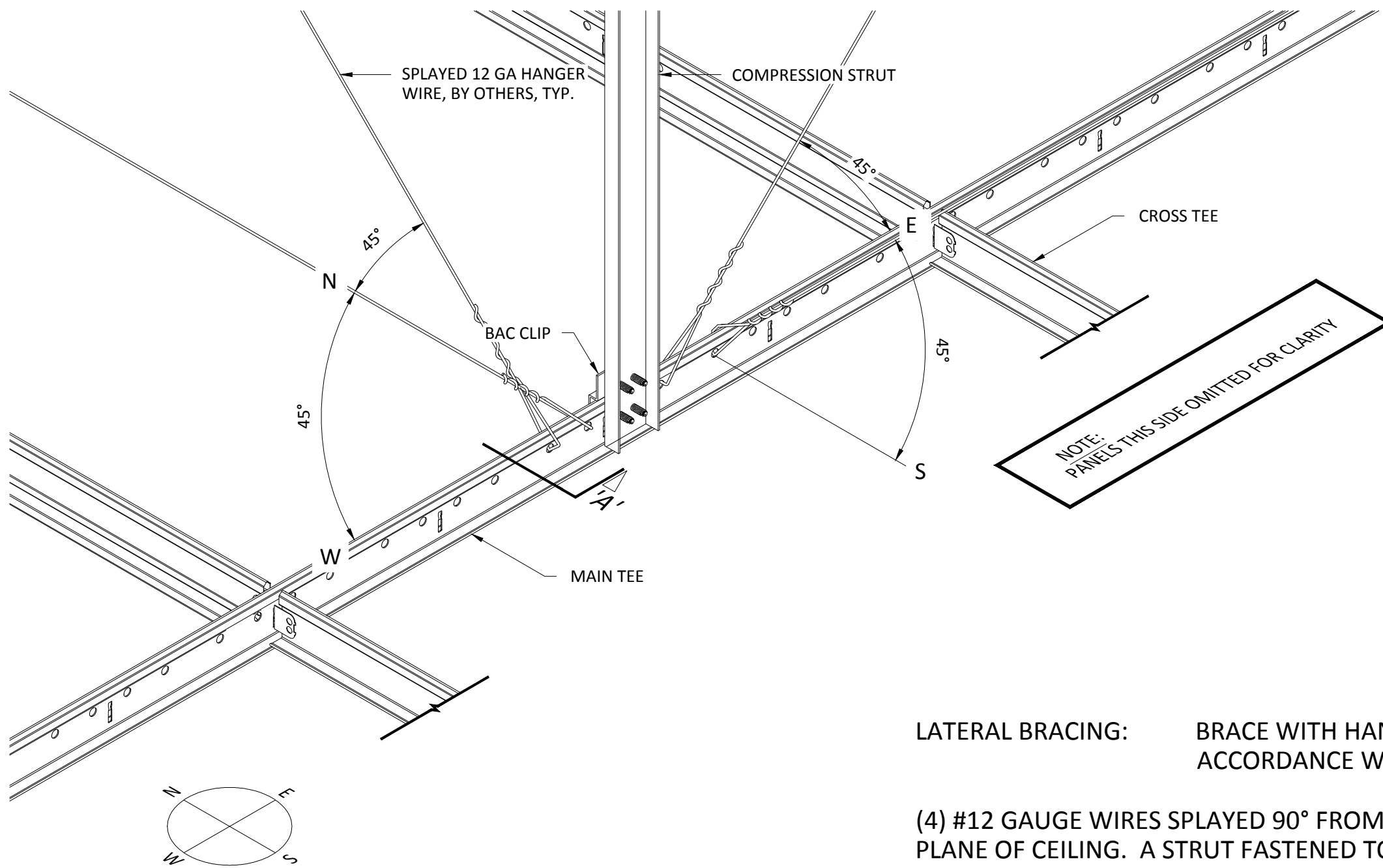
### TOLERANCES

(unless noted otherwise)

DECIMAL: .0 +/- .060  
.00 +/- .030  
.000 +/- .010  
FRACTIONAL: +/-  $\frac{1}{32}$ "  
ANGULAR: +/-  $\frac{1}{2}^\circ$  (.5°)

## FIELD CUT PANEL OPENING SPECIFICATIONS

PROJECT: LAY-IN PRODUCT SPECIFICATIONS  
DRAWING NUMBER: LAY-IN-A1.8  
PART NUMBER: N/A  
SCALE: AS SHOWN  
DATE: 8/20/14  
DRAWN BY: HDAP ENGINEERING



LATERAL BRACING: BRACE WITH HANGER WIRES AND STRUTS PER ASTM E-580 AND IN ACCORDANCE WITH LOCAL CODE REQUIREMENTS.

(4) #12 GAUGE WIRES SPLAYED 90° FROM EACH OTHER AT ANGLE NOT EXCEEDING 45° FROM PLANE OF CEILING. A STRUT FASTENED TO MAIN RUNNER SHALL BE EXTENDED TO AND FASTENED TO STRUCTURE ABOVE. SPLAYED WIRE AND STRUT BRACING TO BE PLACED NOT MORE THAN 12 FEET ON CENTER IN EACH DIRECTION, WITH THE FIRST POINT WITHIN 6 FEET FROM EACH WALL.

## INTERIOR INSTALLATION

\*REVEAL LAY-IN PANELS FOR 15/16" GRID SHOWN

# HunterDouglasContract

## CEILINGS

5015 Oakbrook Parkway, Suite 100  
Norcross, GA 30093  
800-366-4327 / 770-806-9557  
fax: 770-806-0214

*All rights reserved. This drawing is the property of Hunter Douglas and may not be copied or multiplied neither wholly nor partly. It may not be submitted for perusal to third parties either.*

www.hunterdouglascontract.com

### SPECIFICATIONS

(unless noted otherwise)  
MATERIAL: 0.032" OR 0.040" ALUMINUM LAY-IN PANEL  
FINISH: PAINT / POWDER COAT / DECORATED WOOD FINISH / WOOD VENEER  
PERFORATION: SEE DETAIL A1.1 THIS SET

**LUXALON**  
METAL CEILINGS

**WoodWright**  
WOOD CEILINGS

**Techstyle**  
ACOUSTICAL CEILINGS

### TOLERANCES

(unless noted otherwise)  
DECIMAL: .0 +/- .060  
.00 +/- .030  
.000 +/- .010  
FRACTIONAL: +/- 1/32"  
ANGULAR: +/- 1/2° (.5°)

## SEISMIC SPECIFICATIONS

PROJECT: LAY-IN PRODUCT SPECIFICATIONS  
DRAWING NUMBER: LAY-IN-A1.9  
PART NUMBER: N/A  
SCALE: AS SHOWN  
DATE: 8/20/14  
DRAWN BY: HDAP ENGINEERING