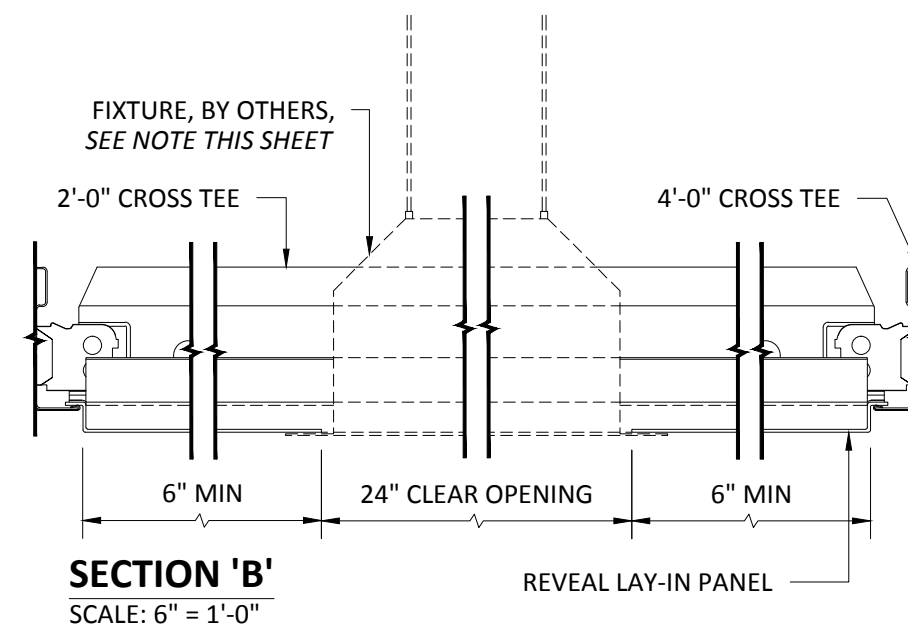
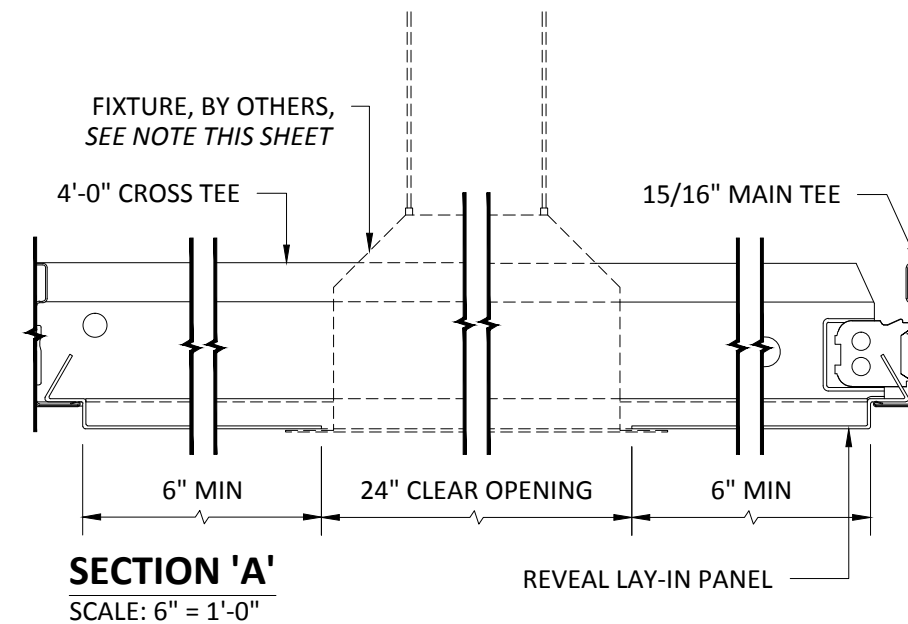
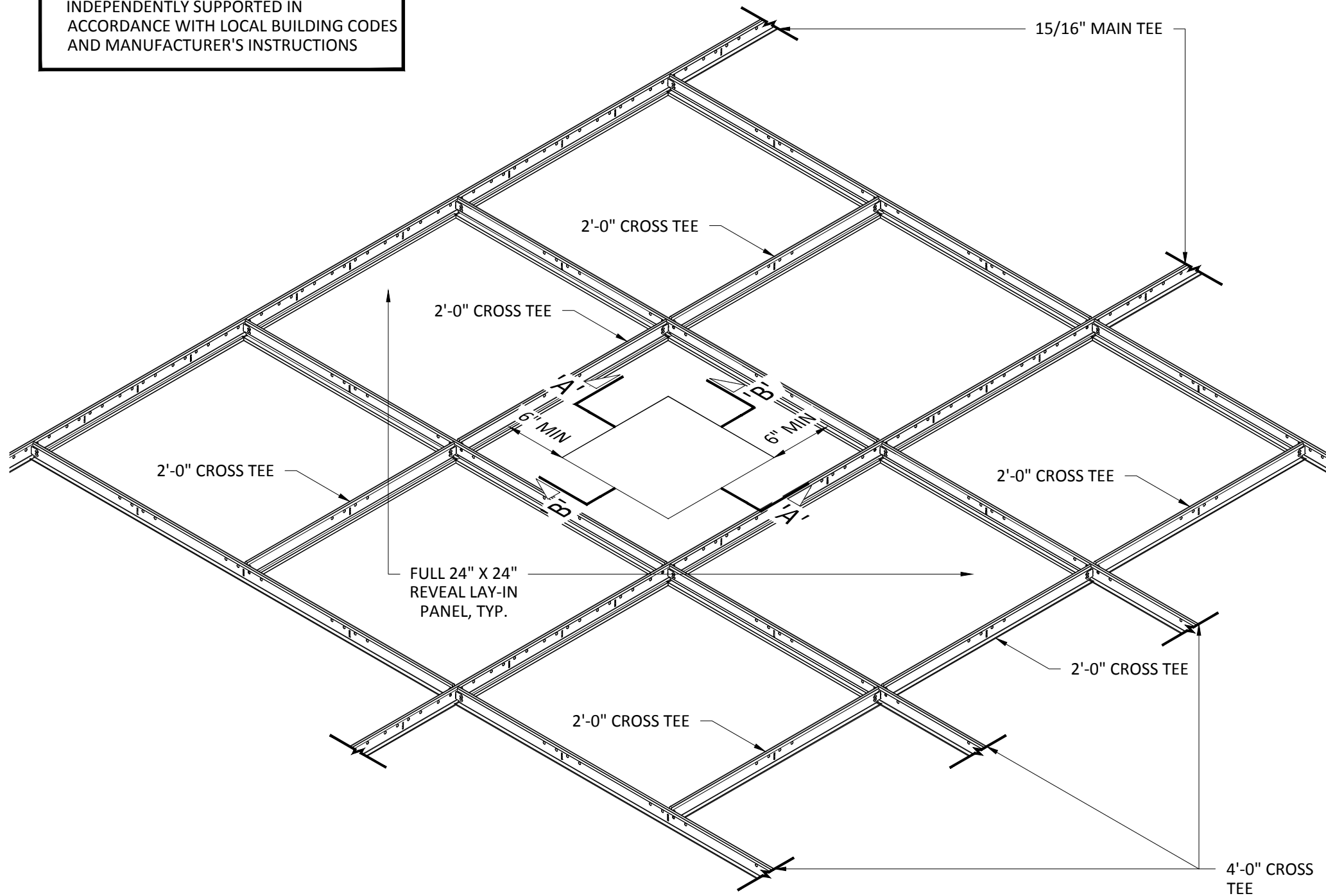


NOTE:
FIXTURE OR DIFFUSER MUST BE
INDEPENDENTLY SUPPORTED IN
ACCORDANCE WITH LOCAL BUILDING CODES
AND MANUFACTURER'S INSTRUCTIONS



INTERIOR INSTALLATION

*VERTICAL SUPPORT OMITTED FOR CLARITY
**REVEAL LAY-IN PANELS FOR 15/16" GRID SHOWN

HunterDouglasContract

CEILINGS

5015 Oakbrook Parkway, Suite 100
Norcross, GA 30093
800-366-4327 / 770-806-9557
fax: 770-806-0214

All rights reserved. This drawing
is the property of Hunter
Douglas and may not be copied
or multiplied neither wholly nor
partly. It may not be submitted
for perusal to third parties
either.

www.hunterdouglascontract.com

SPECIFICATIONS

(unless noted otherwise)
MATERIAL: 0.032" OR 0.040" ALUMINUM LAY-IN PANEL

FINISH: PAINT / POWDER COAT / DECORATED WOOD FINISH /
WOOD VENEER

PERFORATION: SEE DETAIL A1.1 THIS SET

LUXALON
METAL CEILINGS

WoodWright
WOOD CEILINGS

Techstyle
ACOUSTICAL CEILINGS

TOLERANCES

(unless noted otherwise)

DECIMAL: .0 +/- .060
.00 +/- .030
.000 +/- .010
FRACTIONAL: +/- $\frac{1}{32}$ "
ANGULAR: +/- $\frac{1}{2}^\circ$ (.5°)

FIELD CUT PANEL OPENING SPECIFICATIONS

PROJECT: LAY-IN PRODUCT SPECIFICATIONS
DRAWING NUMBER: LAY-IN-A1.8
PART NUMBER: N/A
SCALE: AS SHOWN
DATE: 8/20/14
DRAWN BY: HDAP ENGINEERING