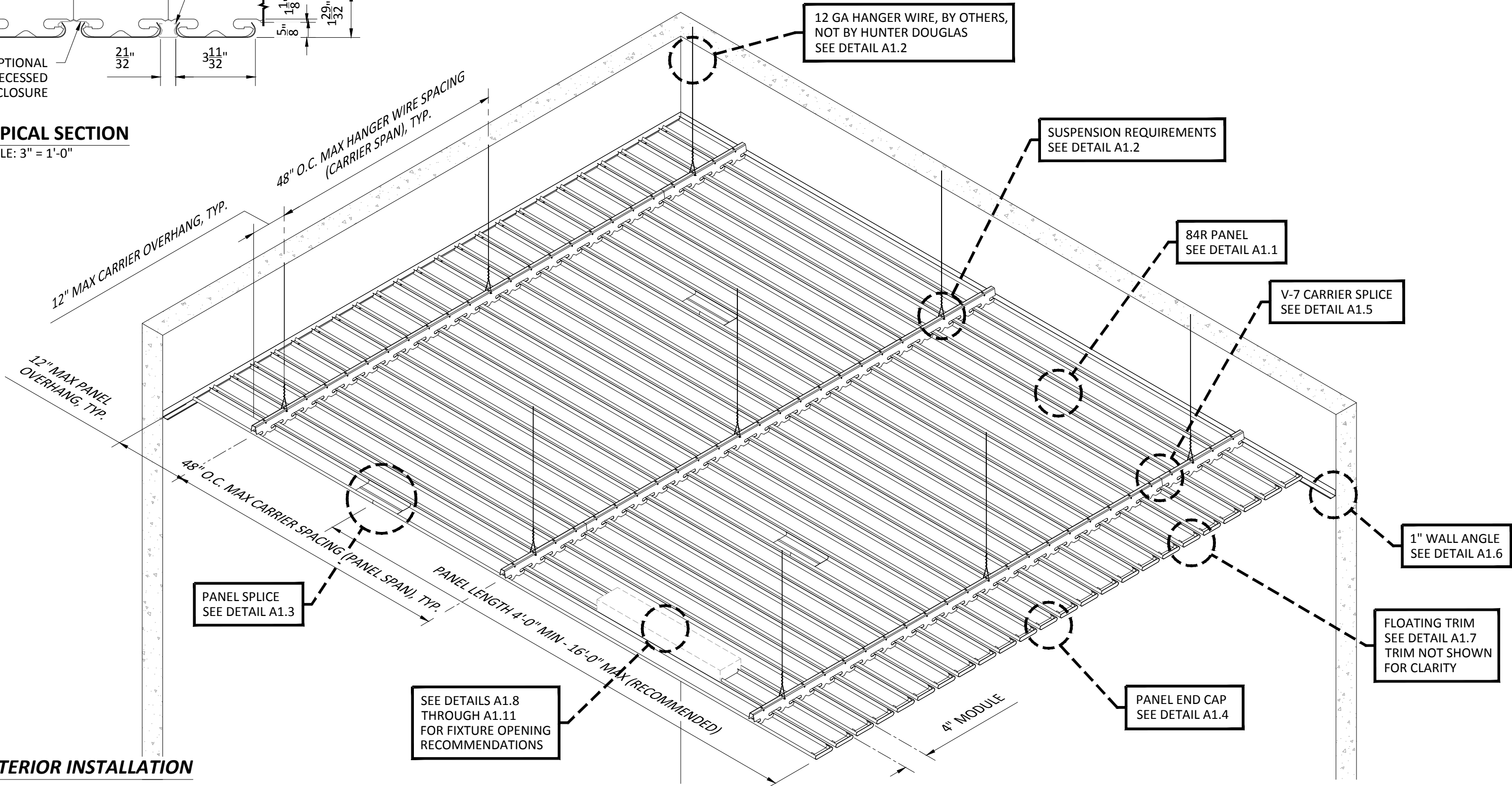


TYPICAL SECTION

SCALE: 3" = 1'-0"



INTERIOR INSTALLATION

HunterDouglasContract

CEILINGS

5015 Oakbrook Parkway, Suite 100
Norcross, GA 30093
800-366-4327 / 770-806-9557
fax: 770-806-0214

All rights reserved. This drawing is the property of Hunter Douglas and may not be copied or multiplied neither wholly nor partly. It may not be submitted for perusal to third parties either.

www.hunterdouglascontract.com

SPECIFICATIONS
(unless noted otherwise)
MATERIAL: 0.020" OR 0.025" ALUMINUM 84R PANEL
0.040" ALUMINUM V-7 CARRIER
FINISH: PAINT / POWDER COAT / DECORATED WOOD LOOK FINISH
PERFORATION: #124 (15% OPEN) / #140 (23% OPEN) / NON-PERFORATED

TOLERANCES
(unless noted otherwise)
DECIMAL: .0 +/- .060
.00 +/- .030
.000 +/- .010
FRACTIONAL: +/- $\frac{1}{32}$ "
ANGULAR: +/- $\frac{1}{2}^{\circ}$ (.5°)

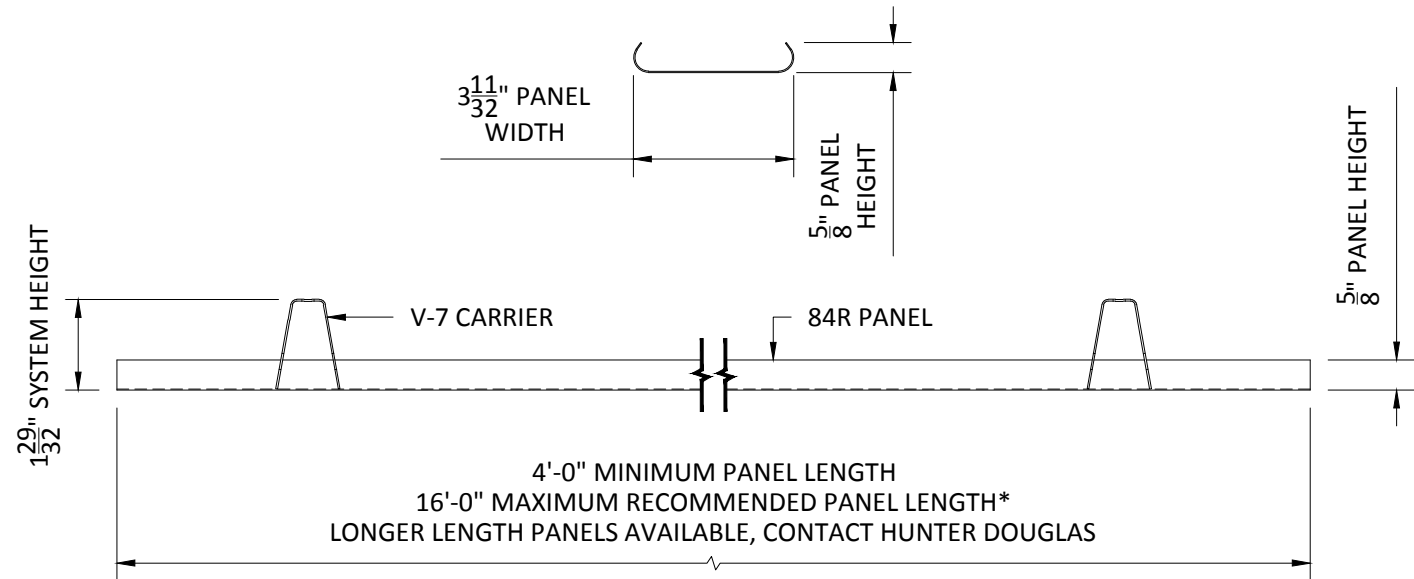
LUXALON
METAL CEILINGS

WoodWright
WOOD CEILINGS

Techstyle
ACOUSTICAL CEILINGS

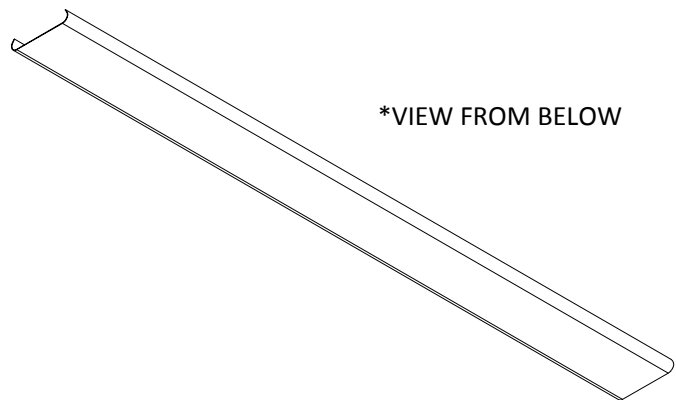
OVERALL ISOMETRIC VIEW

PROJECT: 84R PRODUCT SPECIFICATIONS
DRAWING NUMBER: 84R-A1.0
PART NUMBER: N/A
SCALE: AS SHOWN
DATE: 2/26/15
DRAWN BY: HDAP ENGINEERING



FACTORY END & SIDE PANEL VIEW
SCALE: 3" = 1'-0"

*PANEL LENGTHS AVAILABLE IN $\pm \frac{1}{8}$ " INCREMENTS,
MINIMUM QUANTITIES MAY APPLY



*VIEW FROM BELOW

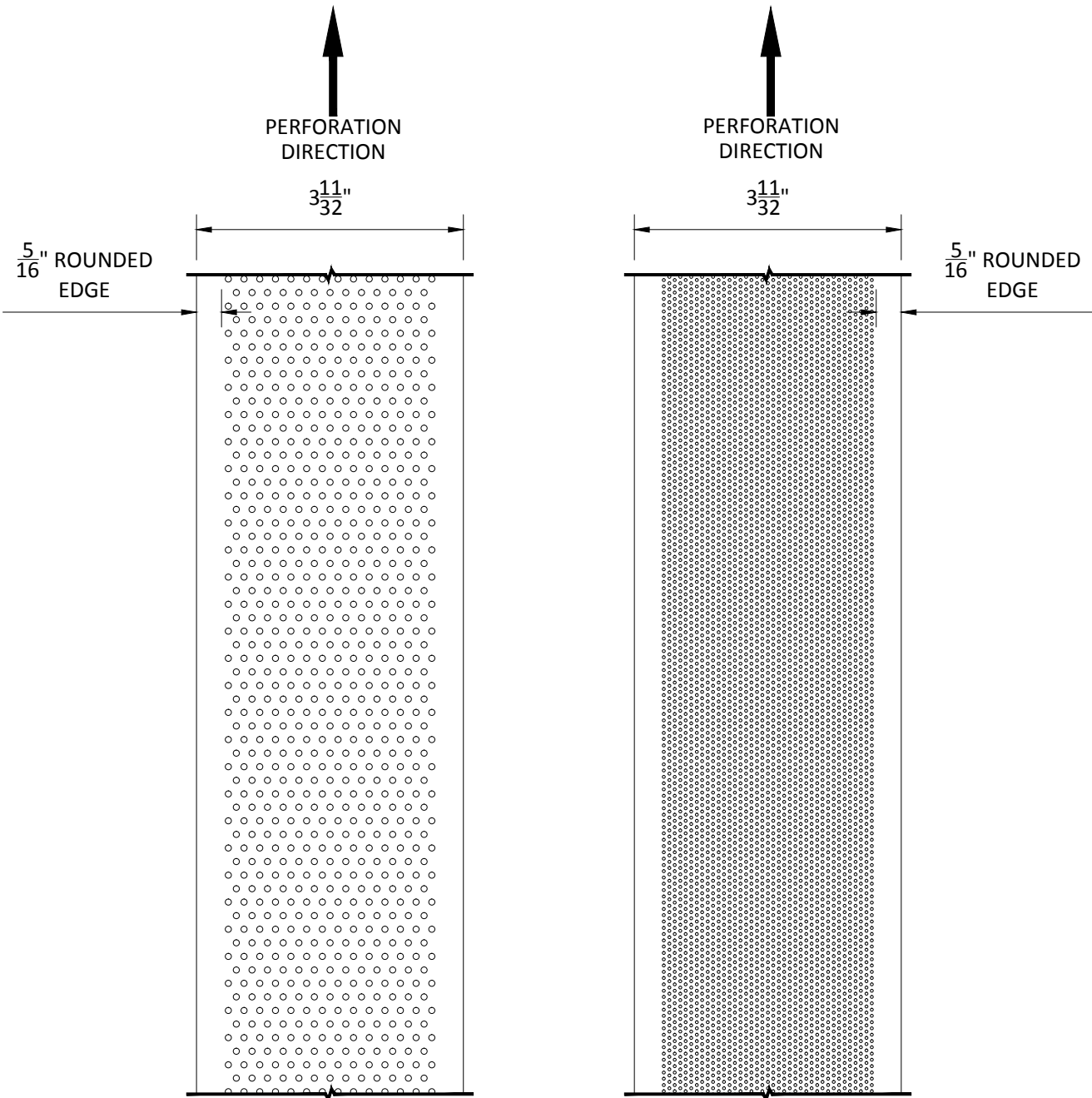
MATERIAL THICKNESS

84R: .020" OR .025" ALUMINUM

PANEL FINISHES

PAINTED & POWDER COATED - .020" OR .025" ALUM.
DECORATED WOOD FINISH (POWDER COATED) - .025" ALUM.

PANEL MATERIALS & FINISHES
SCALE: NOT TO SCALE



PERFORATION #124 - .025" ALUM:
PERF. AREA 15% OPEN
HOLE DIAMETER 0.079"

PERFORATION #140 - .020" ALUM:
PERF. AREA 23% OPEN
HOLE DIAMETER 0.039"

AVAILABLE PERFORATIONS
SCALE: 6" = 1'-0"

HunterDouglasContract

CEILINGS

5015 Oakbrook Parkway, Suite 100
Norcross, GA 30093
800-366-4327 / 770-806-9557
fax: 770-806-0214

All rights reserved. This drawing is the property of Hunter Douglas and may not be copied or multiplied neither wholly nor partly. It may not be submitted for perusal to third parties either.

www.hunterdouglascontract.com

SPECIFICATIONS

(unless noted otherwise)
MATERIAL: 0.020" OR 0.025" ALUMINUM 84R PANEL
0.040" ALUMINUM V-7 CARRIER
FINISH: PAINT / POWDER COAT / DECORATED WOOD FINISH
PERFORATION: #124 (15% OPEN) / #140 (23% OPEN) / NON-PERFORATED

LUXALON
METAL CEILINGS

WoodWright
WOOD CEILINGS

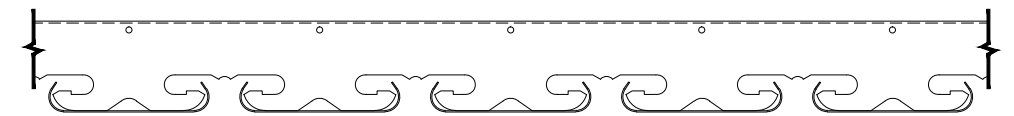
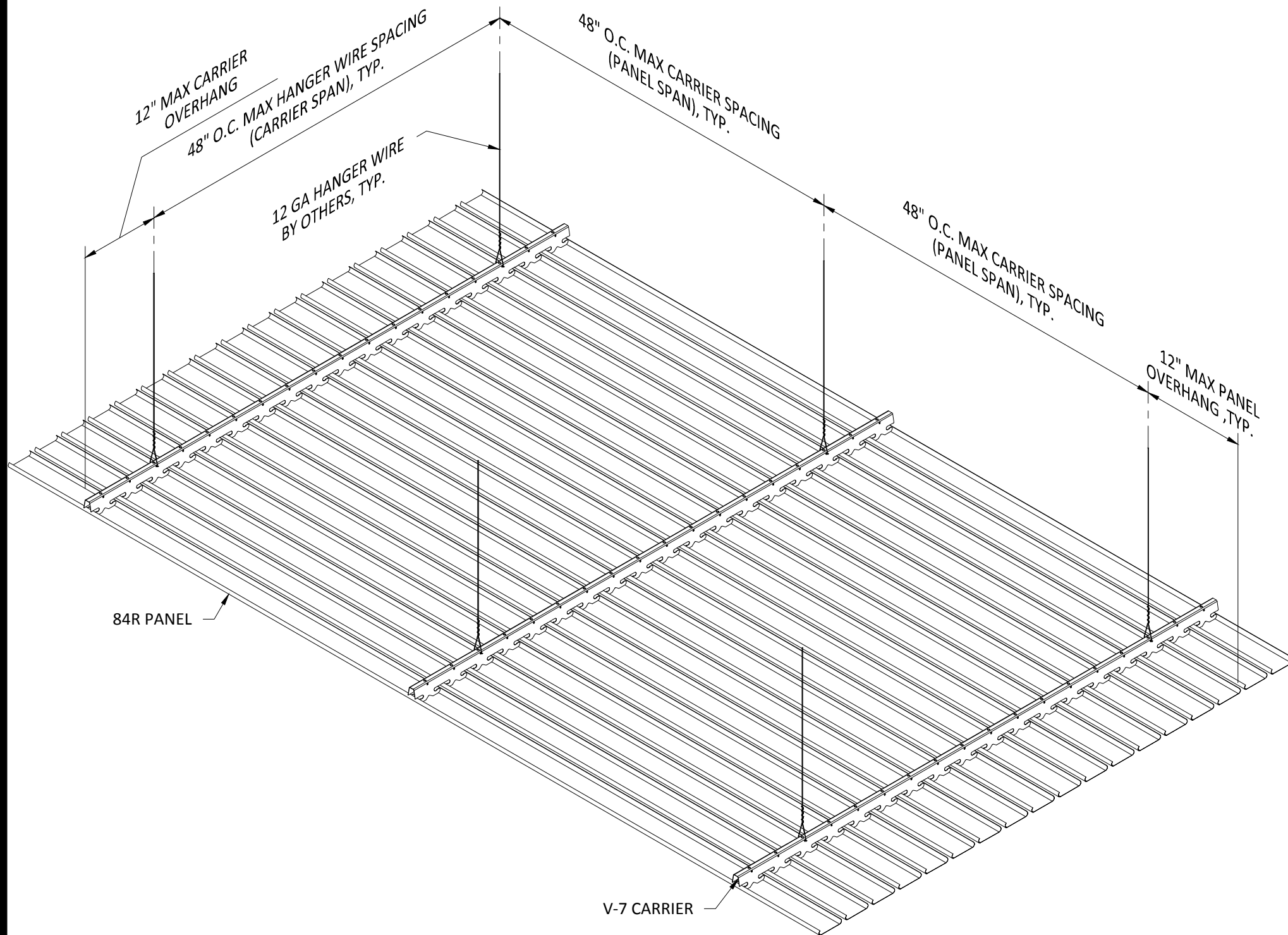
TOLERANCES

(unless noted otherwise)
DECIMAL: .0 +/- .060
.00 +/- .030
.000 +/- .010
FRACTIONAL: +/- $\frac{1}{32}$ "
ANGULAR: +/- $\frac{1}{2}^\circ$ (.5°)

Techstyle
ACOUSTICAL CEILINGS

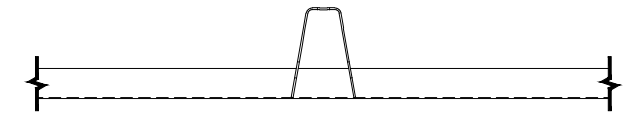
PANEL SPECIFICATIONS

PROJECT: 84R PRODUCT SPECIFICATIONS
DRAWING NUMBER: 84R-A1.1
PART NUMBER: N/A
SCALE: AS SHOWN
DATE: 2/26/15
DRAWN BY: HDAP ENGINEERING



SIDE VIEW OF V-7 CARRIER WITH PANEL

SCALE: 3" = 1'-0"



END VIEW OF V-7 CARRIER WITH PANEL

SCALE: 3" = 1'-0"

V-7 CARRIER*

MATERIAL: 0.040" ALUMINUM

FINISH: MATTE BLACK

PART LENGTH: 16'-0"

*INTEGRAL CARRIER SPLICE, SEE DETAIL A1.5

INTERIOR INSTALLATION

HunterDouglasContract

CEILINGS

5015 Oakbrook Parkway, Suite 100
Norcross, GA 30093
800-366-4327 / 770-806-9557
fax: 770-806-0214

All rights reserved. This drawing is the property of Hunter Douglas and may not be copied or multiplied neither wholly nor partly. It may not be submitted for perusal to third parties either.

www.hunterdouglascontract.com

SPECIFICATIONS

(unless noted otherwise)

MATERIAL: 0.020" OR 0.025" ALUMINUM 84R PANEL
0.040" ALUMINUM V-7 CARRIER

FINISH: PAINT / POWDER COAT / DECORATED WOOD FINISH

PERFORATION: #124 (15% OPEN) / #140 (23% OPEN) / NON-PERFORATED

TOLERANCES

(unless noted otherwise)

DECIMAL: .0 +/- .060
.00 +/- .030
.000 +/- .010

FRACTIONAL: +/- $\frac{1}{32}$ "

ANGULAR: +/- $\frac{1}{2}^\circ$ (.5°)

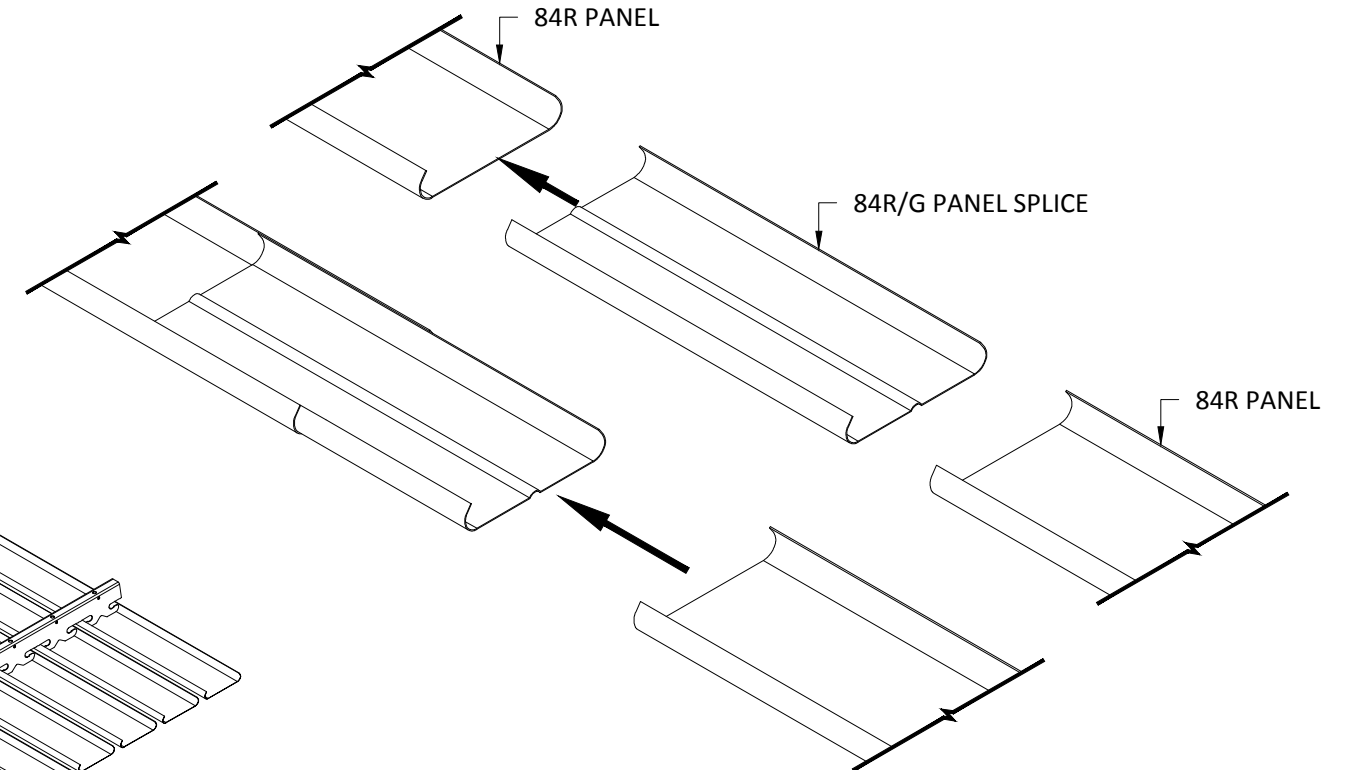
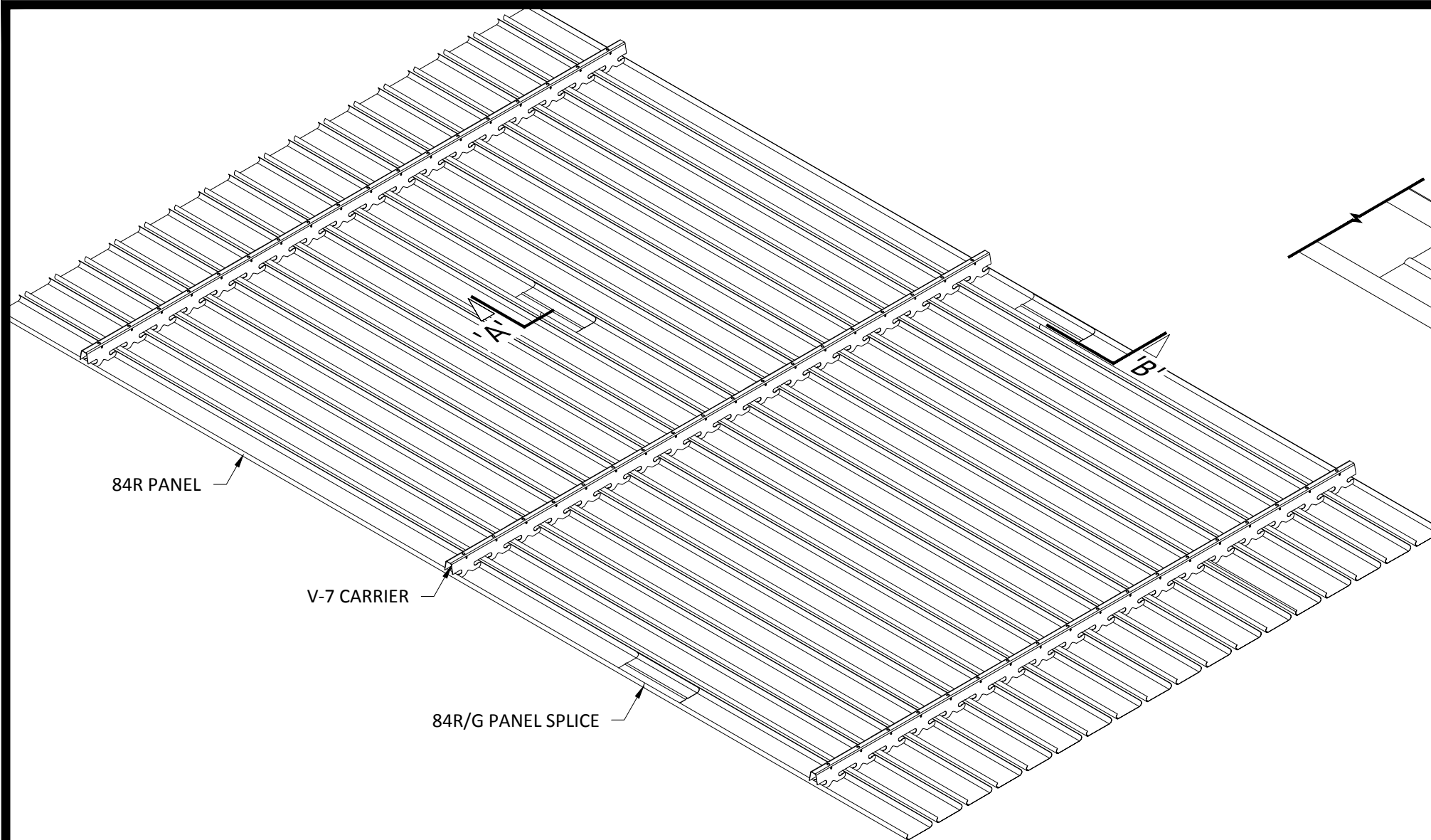
LUXALON®
METAL CEILINGS

WoodWright®
WOOD CEILINGS

Techstyle®
ACOUSTICAL CEILINGS

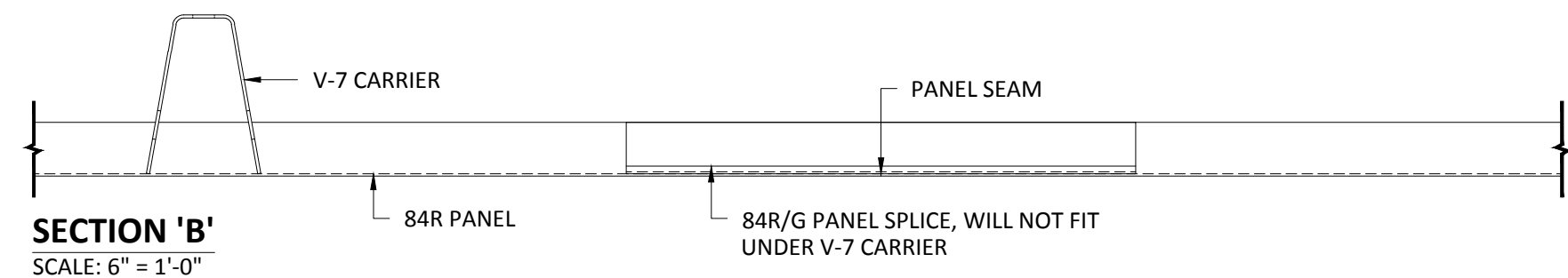
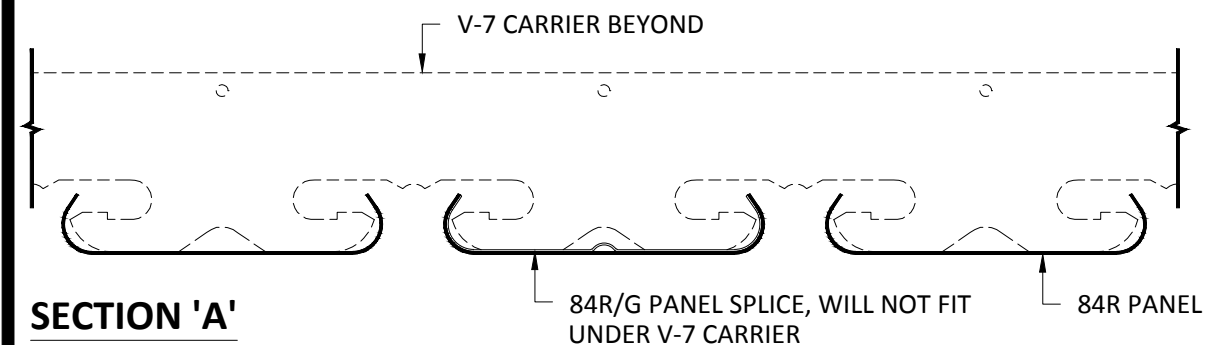
CARRIER SPECIFICATIONS

PROJECT: 84R PRODUCT SPECIFICATIONS
DRAWING NUMBER: 84R-A1.2
PART NUMBER: N/A
SCALE: AS SHOWN
DATE: 2/26/15
DRAWN BY: HDAP ENGINEERING



NOTE 1:
DO NOT SPLICE PANELS DIRECTLY BELOW V-7 CARRIERS.
PANEL SPLICES DO NOT FIT UNDER CARRIERS.

NOTE 2:
FIELD CUT PANELS AS REQUIRED TO CREATE A RANDOM
STAGGERED SEAM PATTERN. AVOID ALIGNED SEAMS.



INTERIOR INSTALLATION

*HANGER WIRE OMITTED FOR CLARITY

HunterDouglasContract

CEILINGS

5015 Oakbrook Parkway, Suite 100
Norcross, GA 30093
800-366-4327 / 770-806-9557
fax: 770-806-0214

All rights reserved. This drawing is the property of Hunter Douglas and may not be copied or multiplied neither wholly nor partly. It may not be submitted for perusal to third parties either.

www.hunterdouglascontract.com

SPECIFICATIONS

(unless noted otherwise)
MATERIAL: 0.020" OR 0.025" ALUMINUM 84R PANEL
0.040" ALUMINUM V-7 CARRIER

FINISH: PAINT / POWDER COAT / DECORATED WOOD FINISH

PERFORATION: #124 (15% OPEN) / #140 (23% OPEN) / NON-PERFORATED

TOLERANCES

(unless noted otherwise)

DECIMAL: .0 +/- .060
.00 +/- .030
.000 +/- .010

FRACTIONAL: +/- $\frac{1}{32}$ "

ANGULAR: +/- $\frac{1}{2}^\circ$ (.5°)

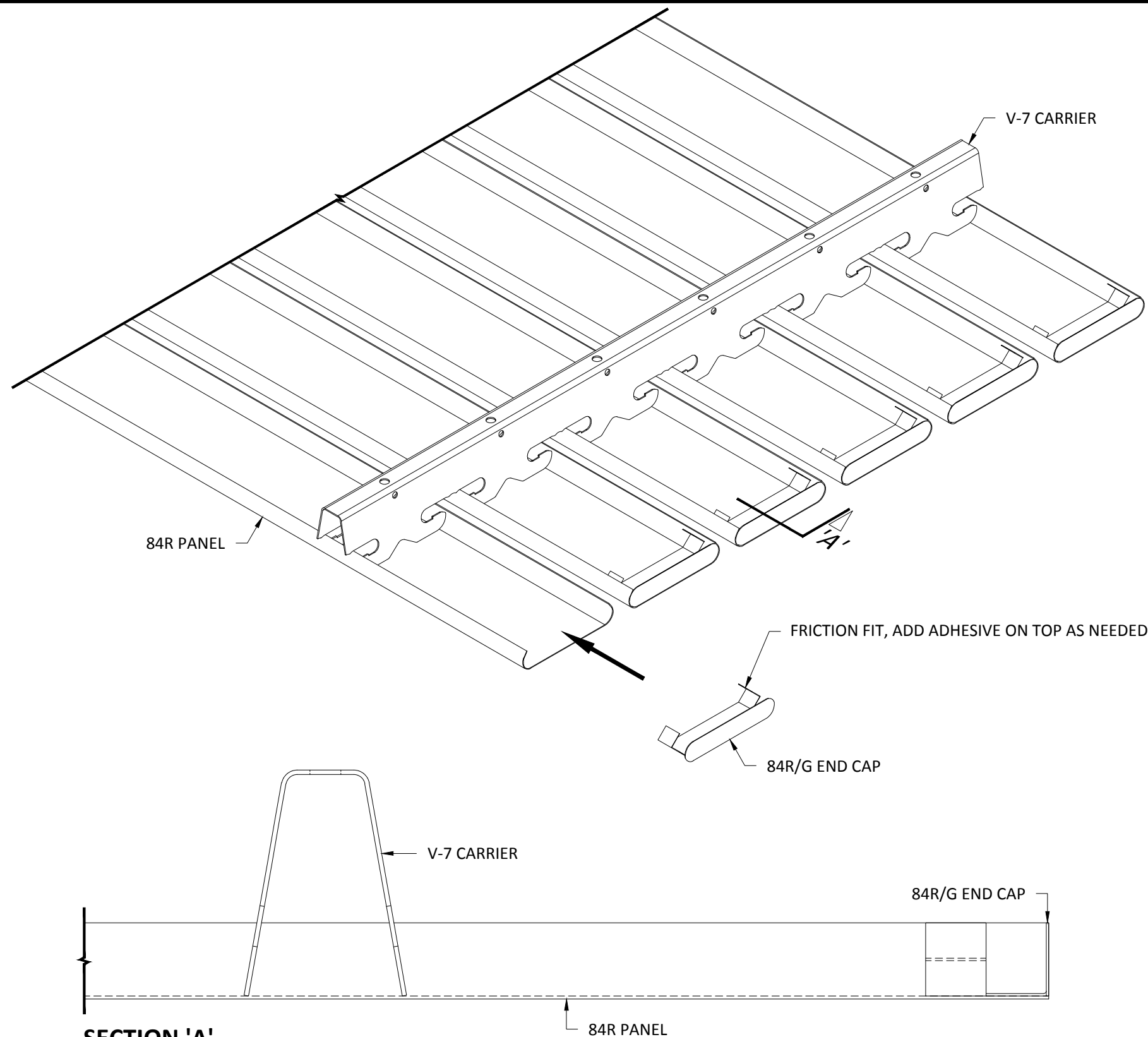
LUXALON
METAL CEILINGS

WoodWright
WOOD CEILINGS

Techstyle
ACOUSTICAL CEILINGS

PANEL SPLICE SPECIFICATIONS

PROJECT: 84R PRODUCT SPECIFICATIONS
DRAWING NUMBER: 84R-A1.3
PART NUMBER: N/A
SCALE: AS SHOWN
DATE: 2/26/15
DRAWN BY: HDAP ENGINEERING



INTERIOR INSTALLATION

SECTION 'A'

SCALE: FULL (1:1)

*HANGER WIRE OMITTED FOR CLARITY

HunterDouglasContract

CEILINGS

5015 Oakbrook Parkway, Suite 100
Norcross, GA 30093
800-366-4327 / 770-806-9557
fax: 770-806-0214

All rights reserved. This drawing is the property of Hunter Douglas and may not be copied or multiplied neither wholly nor partly. It may not be submitted for perusal to third parties either.

www.hunterdouglascontract.com

SPECIFICATIONS

(unless noted otherwise)

MATERIAL: 0.020" OR 0.025" ALUMINUM 84R PANEL
0.040" ALUMINUM V-7 CARRIER

FINISH: PAINT / POWDER COAT / DECORATED WOOD FINISH

PERFORATION: #124 (15% OPEN) / #140 (23% OPEN) / NON-PERFORATED

LUXALON
METAL CEILINGS

WoodWright
WOOD CEILINGS

Techstyle
ACOUSTICAL CEILINGS

TOLERANCES

(unless noted otherwise)

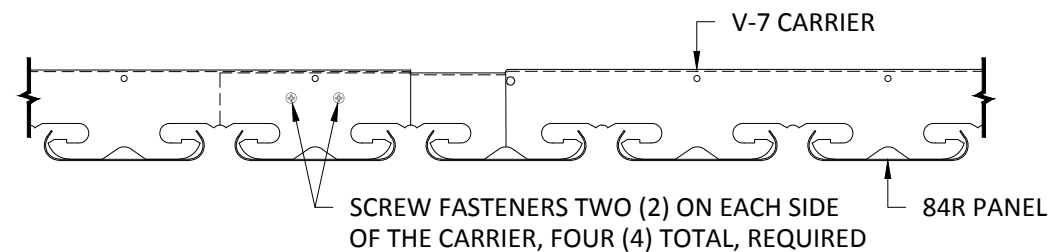
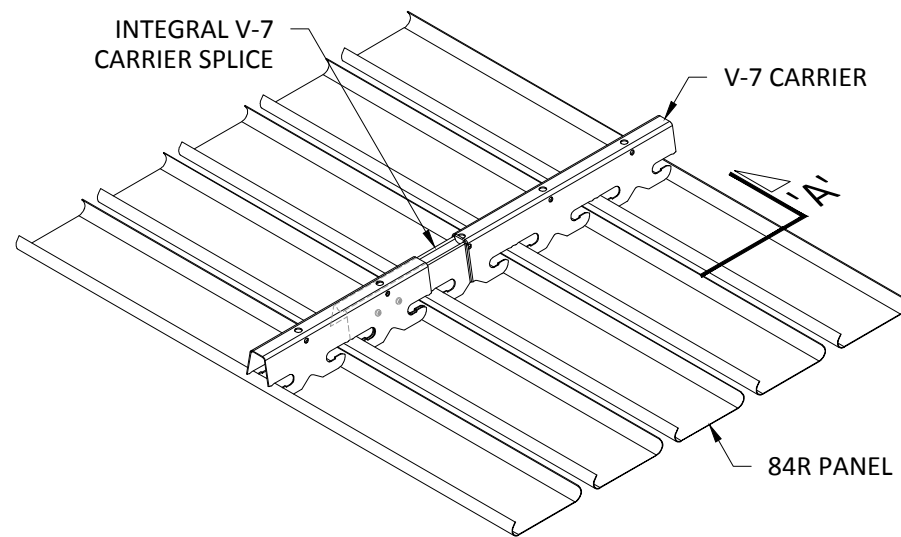
DECIMAL: .0 +/- .060
.00 +/- .030
.000 +/- .010

FRACTIONAL: +/- $\frac{1}{32}$ "

ANGULAR: +/- $\frac{1}{2}^{\circ}$ (.5°)

PANEL END CAP

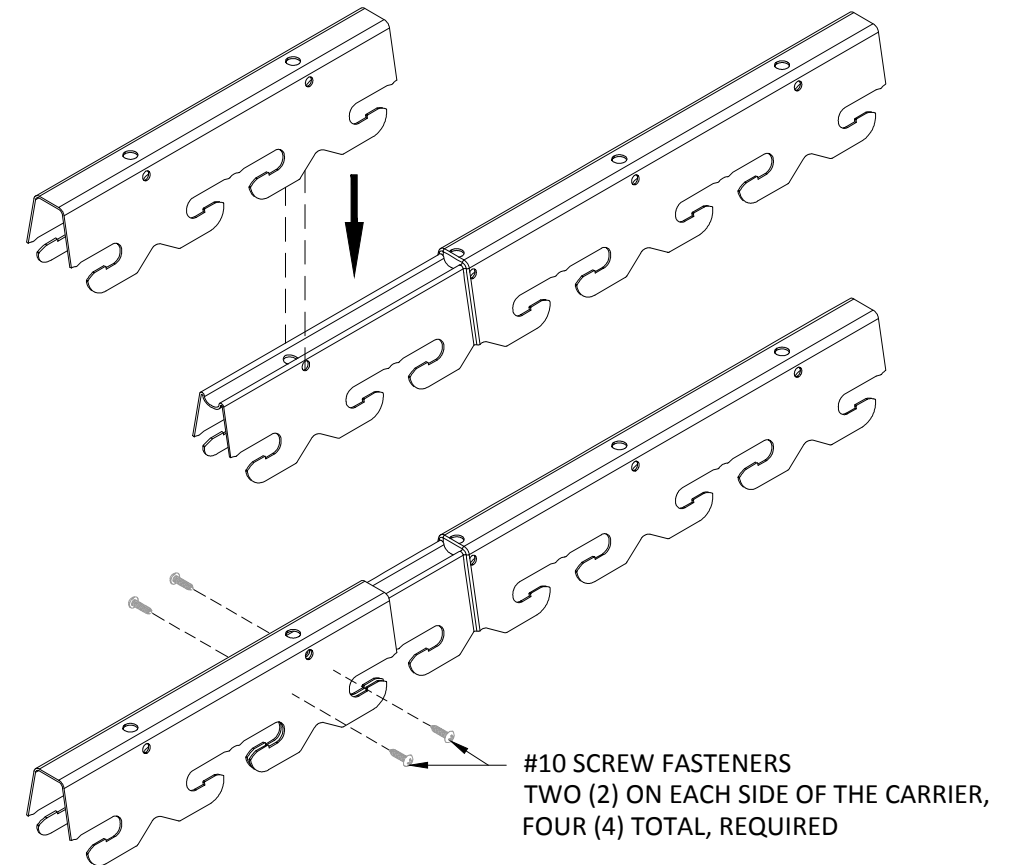
PROJECT: 84R PRODUCT SPECIFICATIONS
DRAWING NUMBER: 84R-A1.4
PART NUMBER: N/A
SCALE: AS SHOWN
DATE: 2/26/15
DRAWN BY: HDAP ENGINEERING



SECTION 'A'
SCALE: 3" = 1'-0"

THE V-7 CARRIER CONTAINS AN INTEGRAL SPLICE. NEST ONE END OF THE CARRIER INTO THE OTHER END AND LINE UP THE HOLES AND FLANGES TO MAINTAIN THE MODULE.

SCREW FASTENERS TWO (2) ON EACH SIDE OF THE CARRIER, FOUR (4) TOTAL ARE REQUIRED TO SECURE THE CARRIERS.



INTERIOR INSTALLATION

*HANGER WIRE OMITTED FOR CLARITY

HunterDouglasContract

CEILINGS

5015 Oakbrook Parkway, Suite 100
Norcross, GA 30093
800-366-4327 / 770-806-9557
fax: 770-806-0214

All rights reserved. This drawing is the property of Hunter Douglas and may not be copied or multiplied neither wholly nor partly. It may not be submitted for perusal to third parties either.

www.hunterdouglascontract.com

SPECIFICATIONS

(unless noted otherwise)
MATERIAL: 0.020" OR 0.025" ALUMINUM 84R PANEL
0.040" ALUMINUM V-7 CARRIER
FINISH: PAINT / POWDER COAT / DECORATED WOOD FINISH
PERFORATION: #124 (15% OPEN) / #140 (23% OPEN) / NON-PERFORATED

LUXALON
METAL CEILINGS

WoodWright
WOOD CEILINGS

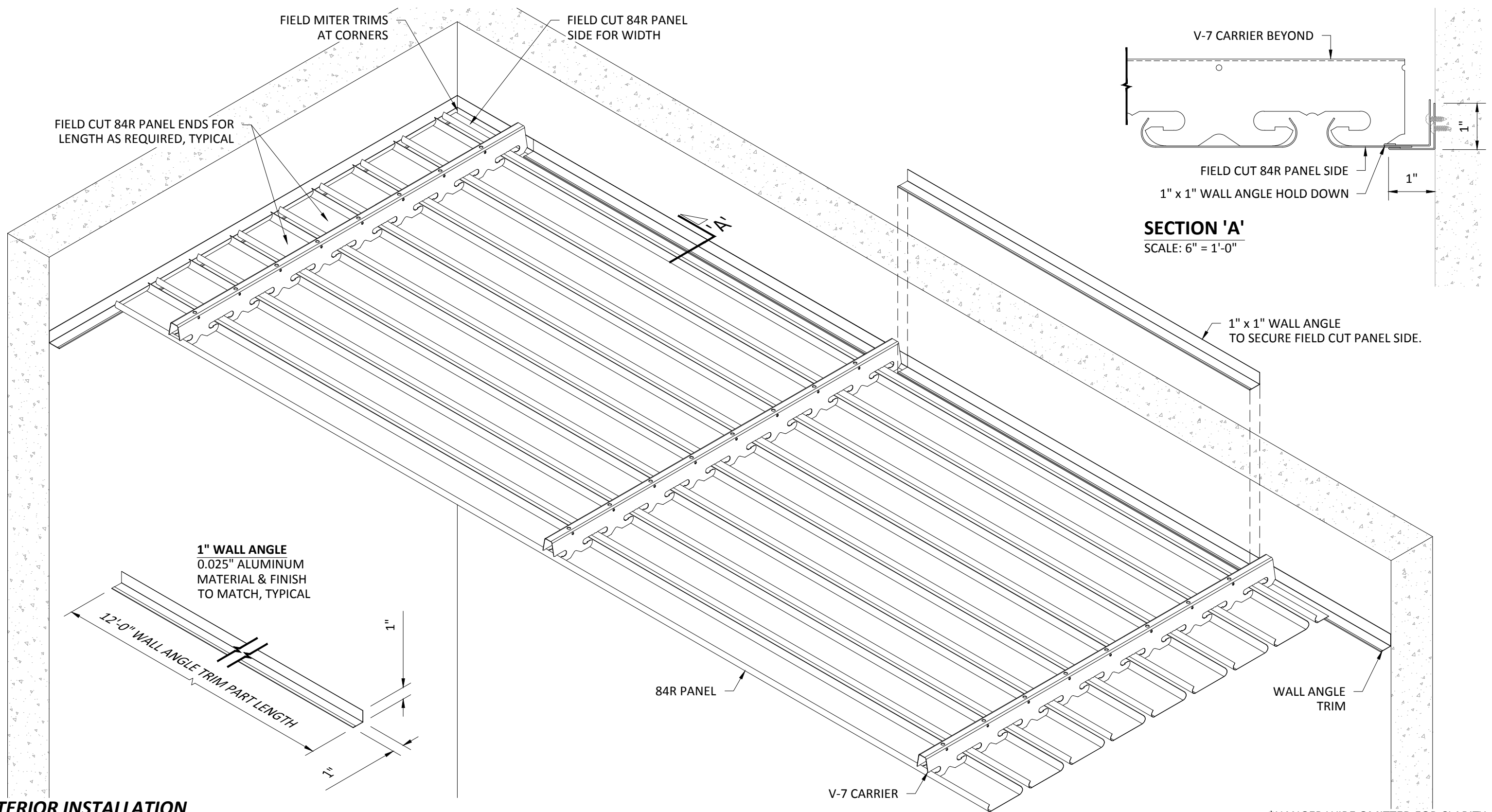
TOLERANCES

(unless noted otherwise)
DECIMAL: .0 +/- .060
.00 +/- .030
.000 +/- .010
FRACTIONAL: +/- 1/32"
ANGULAR: +/- 1/2° (.5°)

Techstyle
ACOUSTICAL CEILINGS

UNIVERSAL CARRIER SPLICE

PROJECT: 84R PRODUCT SPECIFICATIONS
DRAWING NUMBER: 84R-A1.5
PART NUMBER: N/A
SCALE: AS SHOWN
DATE: 2/26/15
DRAWN BY: HDAP ENGINEERING



INTERIOR INSTALLATION

*HANGER WIRE OMITTED FOR CLARITY

HunterDouglasContract

CEILING

5015 Oakbrook Parkway, Suite 100
Norcross, GA 30093
800-366-4327 / 770-806-9557
fax: 770-806-0214

All rights reserved. This drawing is the property of Hunter Douglas and may not be copied or multiplied neither wholly nor partly. It may not be submitted for perusal to third parties either.

www.hunterdouglascontract.com

SPECIFICATIONS

(unless noted otherwise)

MATERIAL: 0.020" OR 0.025" ALUMINUM 84R PANEL
0.040" ALUMINUM V-7 CARRIER

FINISH: PAINT / POWDER COAT / DECORATED WOOD FINISH

PERFORATION: #124 (15% OPEN) / #140 (23% OPEN) / NON-PERFORATED

TOLERANCES

(unless noted otherwise)

DECIMAL: .0 +/- .060
.00 +/- .030
.000 +/- .010

FRACTIONAL: +/- 1/32"

ANGULAR: +/- 1/2° (.5°)

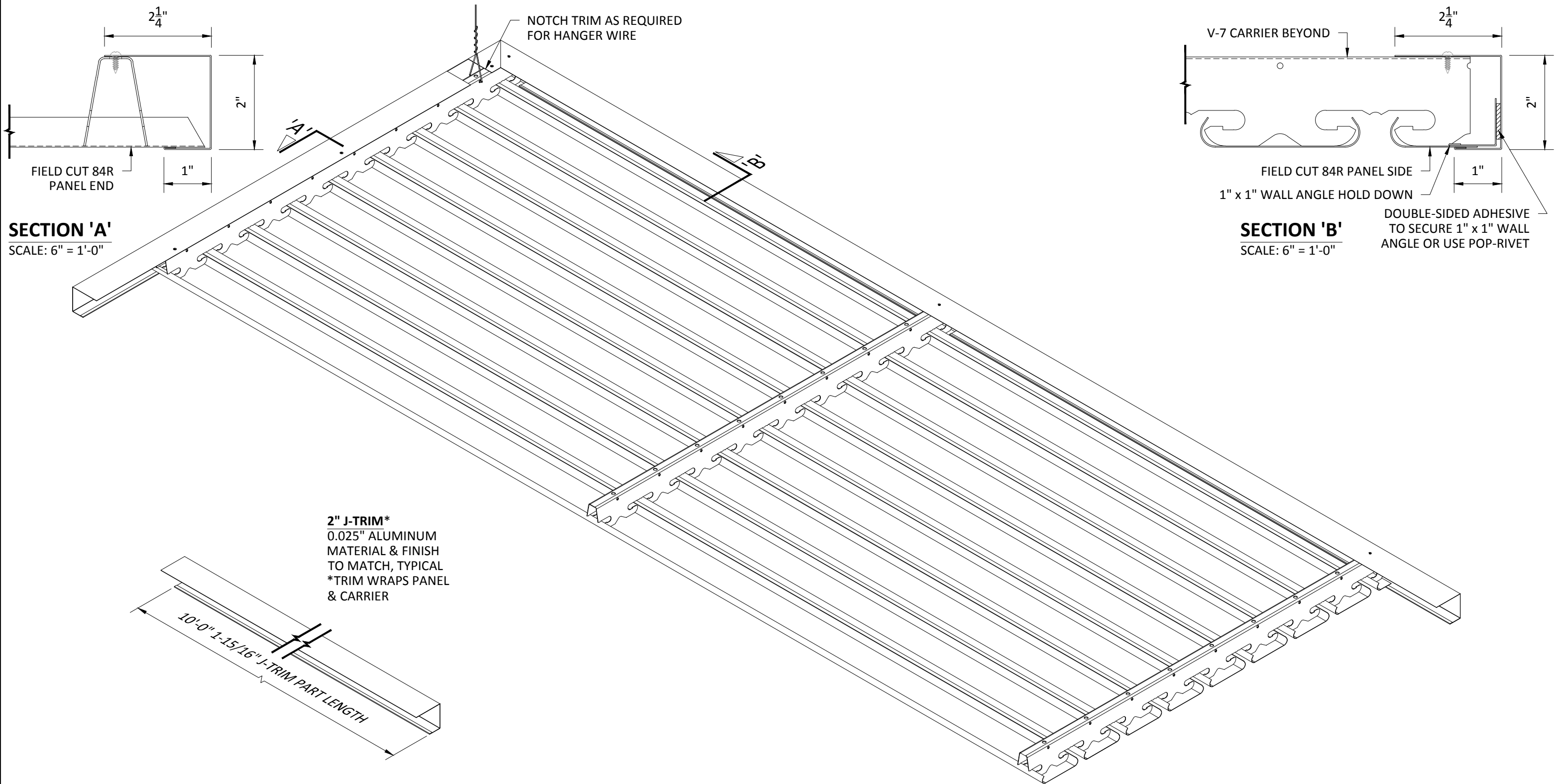
LUXALON
METAL CEILINGS

WoodWright
WOOD CEILINGS

Techstyle
ACOUSTICAL CEILINGS

WALL ANGLE TRIM

PROJECT: 84R PRODUCT SPECIFICATIONS
DRAWING NUMBER: 84R-A1.6
PART NUMBER: N/A
SCALE: AS SHOWN
DATE: 2/26/15
DRAWN BY: HDAP ENGINEERING



INTERIOR INSTALLATION

*SOME HANGER WIRE OMITTED FOR CLARITY

HunterDouglasContract

CEILINGS

5015 Oakbrook Parkway, Suite 100
Norcross, GA 30093
800-366-4327 / 770-806-9557
fax: 770-806-0214

All rights reserved. This drawing is the property of Hunter Douglas and may not be copied or multiplied neither wholly nor partly. It may not be submitted for perusal to third parties either.

www.hunterdouglascontract.com

SPECIFICATIONS

(unless noted otherwise)

MATERIAL: 0.020" OR 0.025" ALUMINUM 84R PANEL
0.040" ALUMINUM V-7 CARRIER

FINISH: PAINT / POWDER COAT / DECORATED WOOD FINISH

PERFORATION: #124 (15% OPEN) / #140 (23% OPEN) / NON-PERFORATED

TOLERANCES

(unless noted otherwise)

DECIMAL: .0 +/- .060
.00 +/- .030
.000 +/- .010

FRACTIONAL: +/- 1/32"

ANGULAR: +/- 1/2° (.5°)

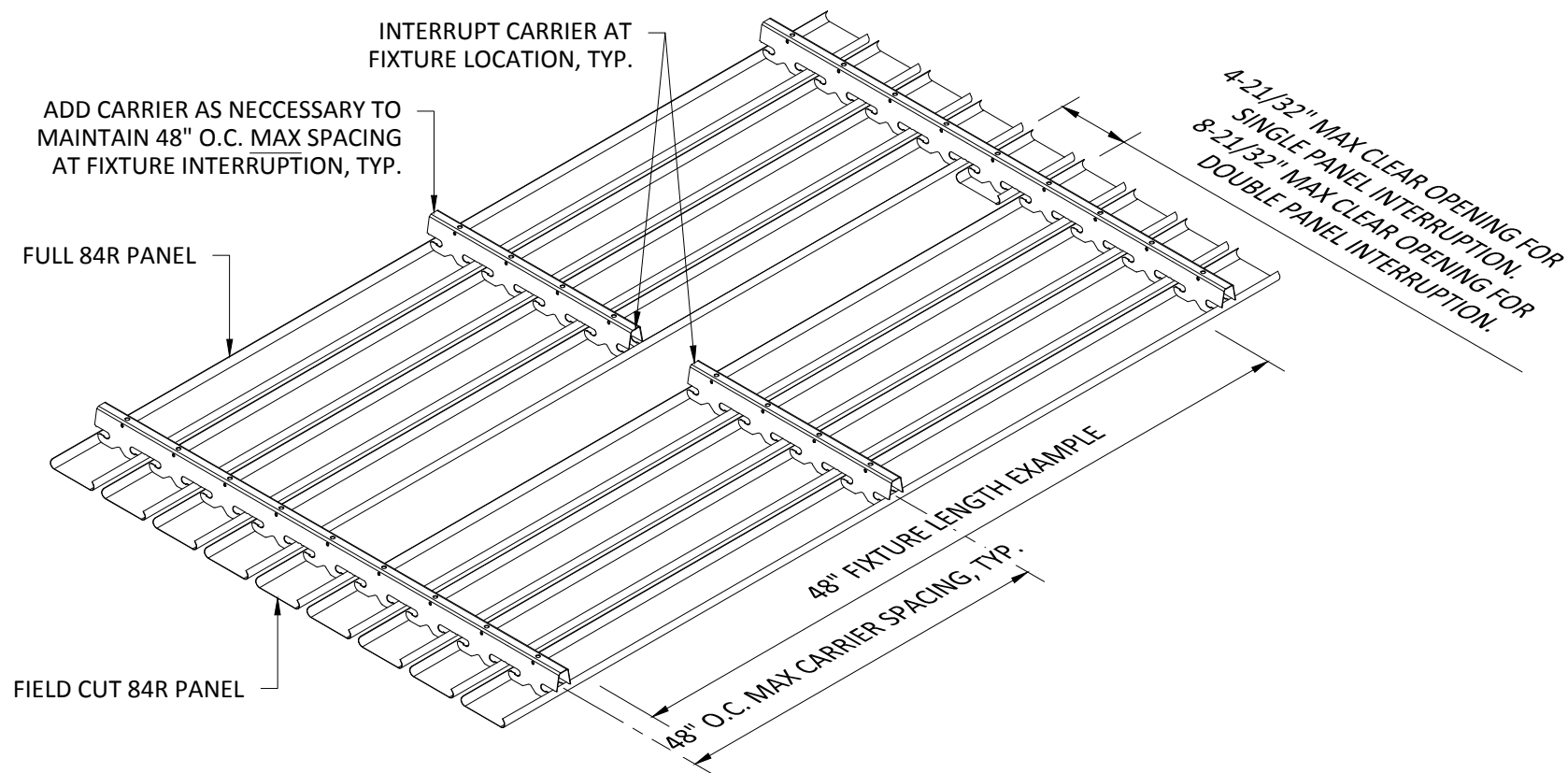
LUXALON
METAL CEILINGS

WoodWright
WOOD CEILINGS

Techstyle
ACOUSTICAL CEILINGS

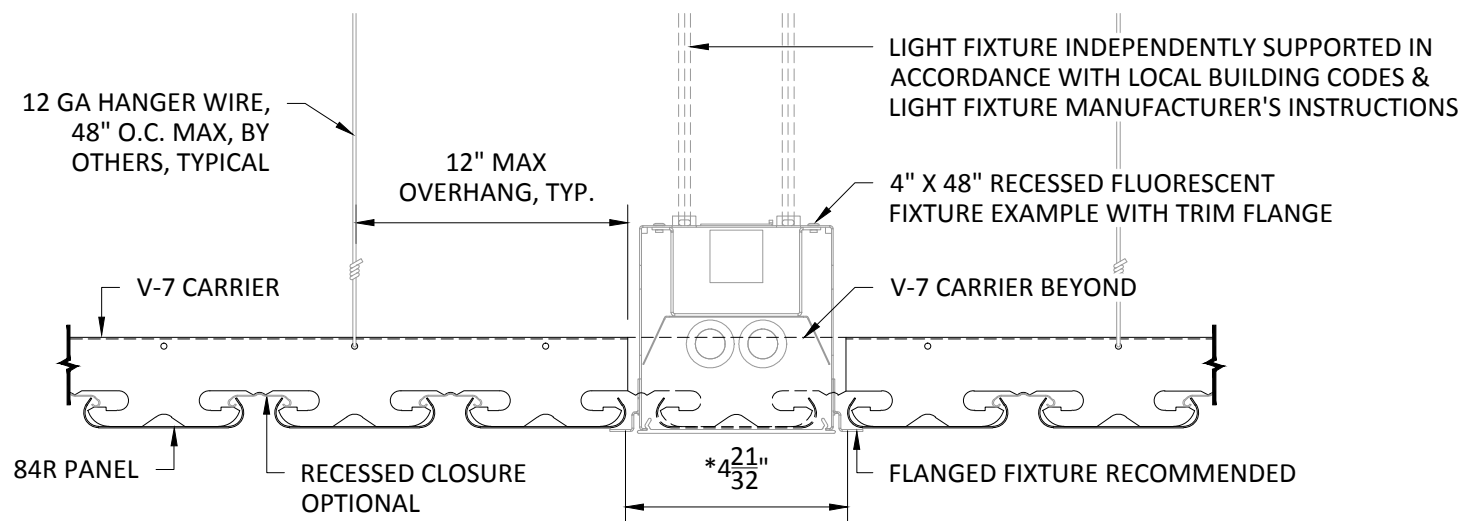
FLOATING TRIM

PROJECT: 84R PRODUCT SPECIFICATIONS
DRAWING NUMBER: 84R-A1.7
PART NUMBER: N/A
SCALE: AS SHOWN
DATE: 2/26/15
DRAWN BY: HDAP ENGINEERING



TYPICAL ISOMETRIC

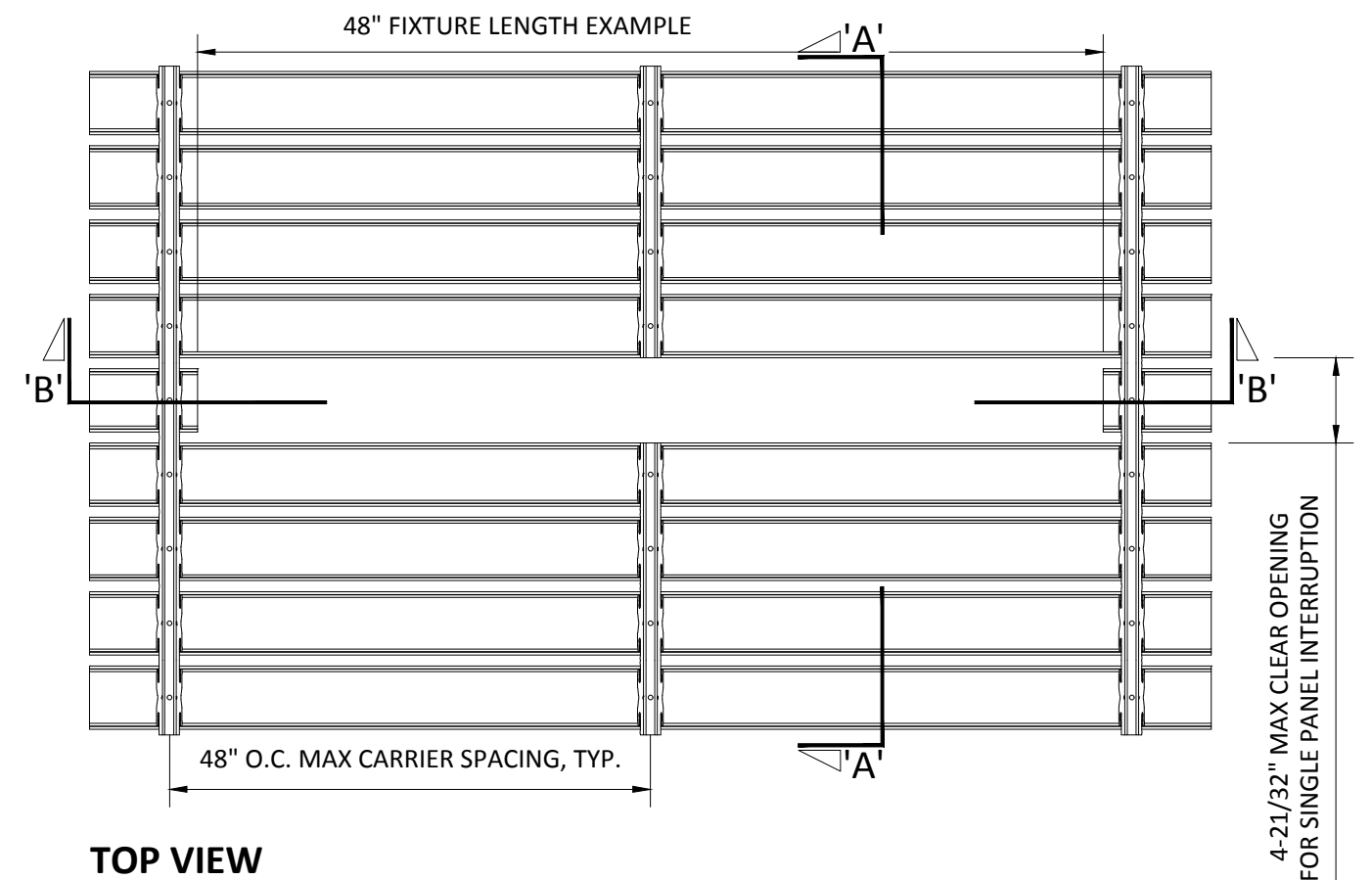
SCALE: NOT TO SCALE



SECTION 'A'

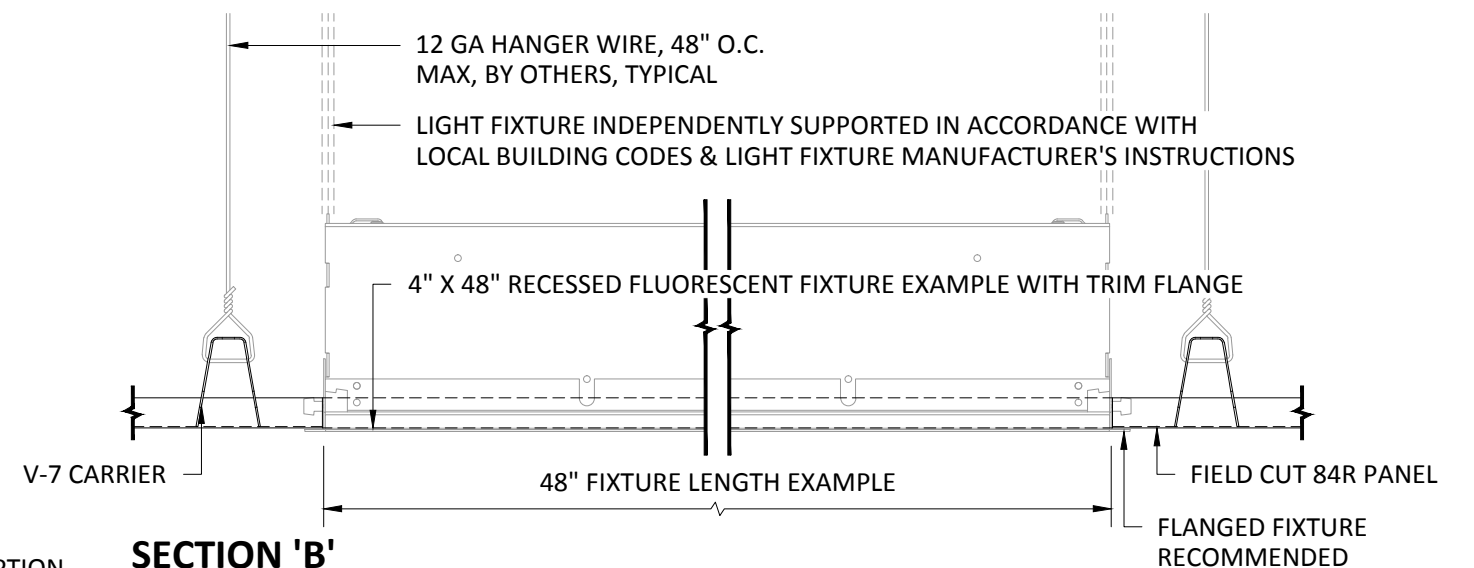
SCALE: 3" = 1'-0"

*4-21/32" MAX CLEAR OPENING, PANEL EDGE TO PANEL EDGE, FOR SINGLE PANEL INTERRUPTION.
8-21/32" MAX CLEAR OPENING, PANEL EDGE TO PANEL EDGE, FOR DOUBLE PANEL INTERRUPTION.



TOP VIEW

SCALE: NOT TO SCALE



SECTION 'B'

SCALE: 3" = 1'-0"

INTERIOR INSTALLATION

NOTE: FIXTURE WITH TRIM FLANGE NOT BY HUNTER DOUGLAS

HunterDouglasContract

CEILINGS

5015 Oakbrook Parkway, Suite 100
Norcross, GA 30093
800-366-4327 / 770-806-9557
fax: 770-806-0214

All rights reserved. This drawing is the property of Hunter Douglas and may not be copied or multiplied neither wholly nor partly. It may not be submitted for perusal to third parties either.

www.hunterdouglascontract.com

SPECIFICATIONS

(unless noted otherwise)

MATERIAL: 0.020" OR 0.025" ALUMINUM 84R PANEL
0.040" ALUMINUM V-7 CARRIER

FINISH: PAINT / POWDER COAT / DECORATED WOOD FINISH

PERFORATION: #124 (15% OPEN) / #140 (23% OPEN) / NON-PERFORATED

LUXALON
METAL CEILINGS

WoodWright
WOOD CEILINGS

Techstyle
ACOUSTICAL CEILINGS

TOLERANCES

(unless noted otherwise)

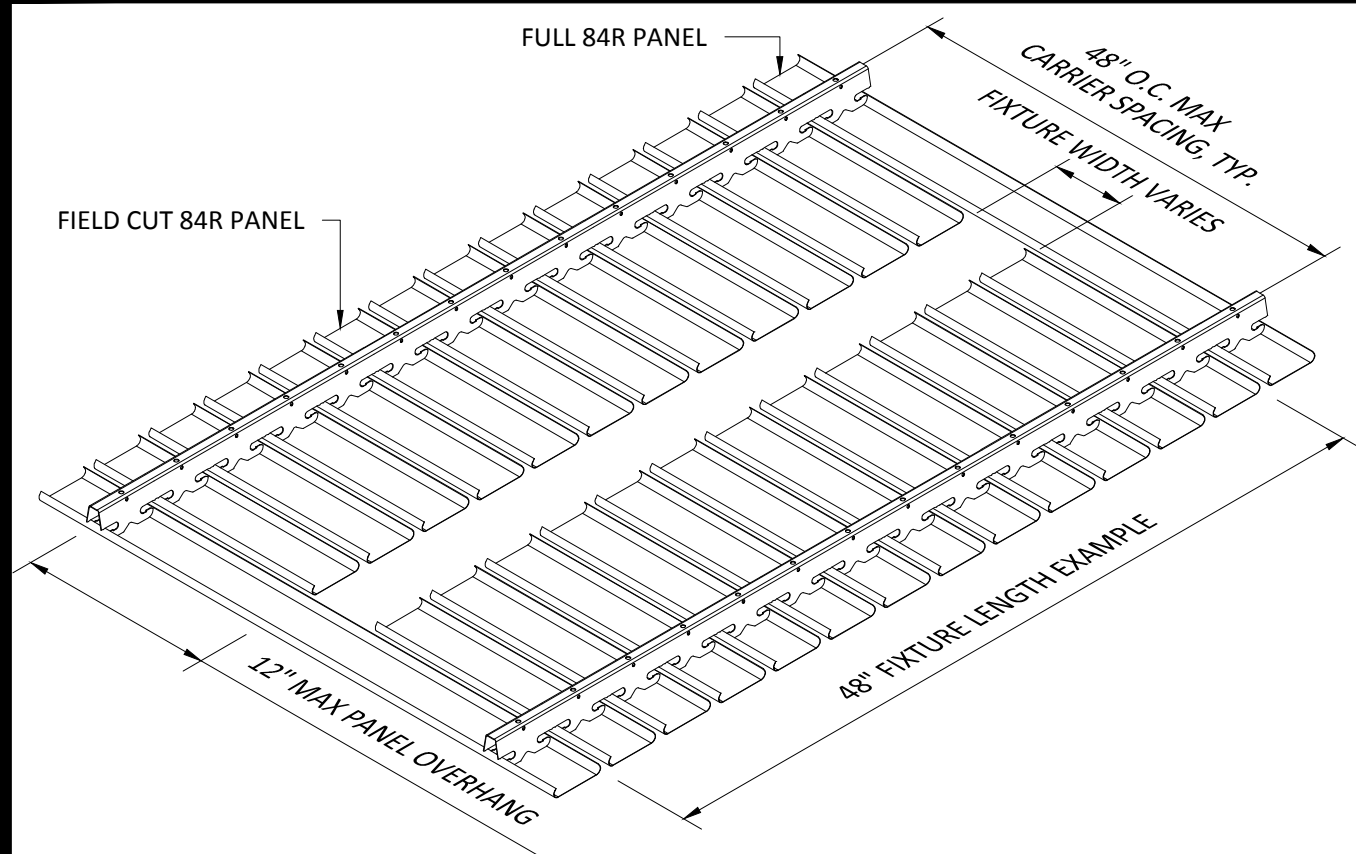
DECIMAL: .0 +/- .060
.00 +/- .030
.000 +/- .010

FRACTIONAL: +/- 1/32"

ANGULAR: +/- 1/2° (.5°)

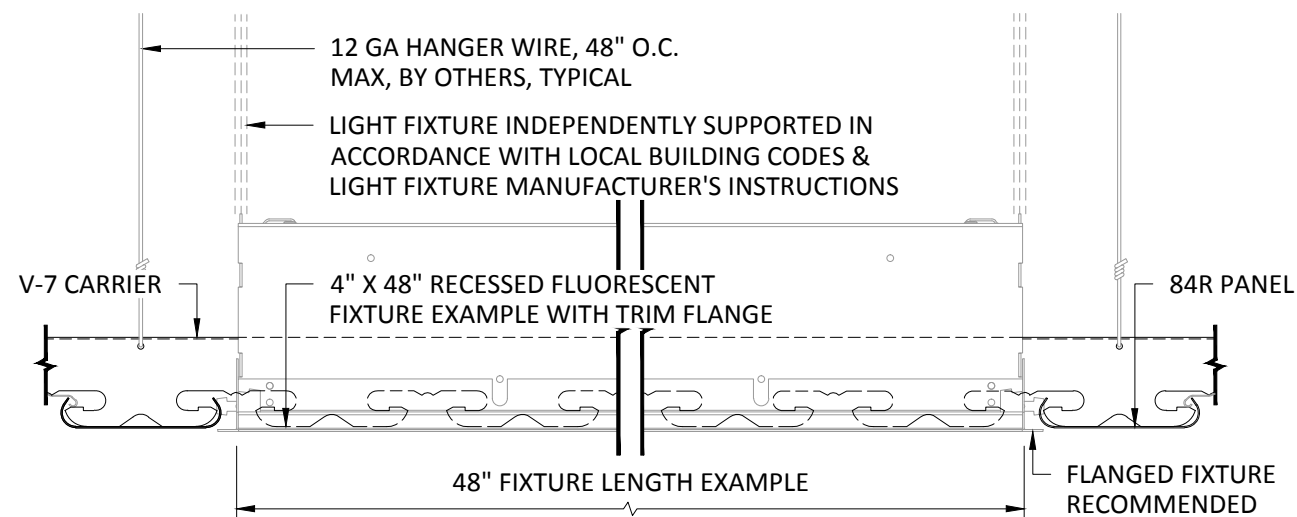
INTERRUPTED PANEL FOR TYPICAL FIXTURE

PROJECT: 84R PRODUCT SPECIFICATIONS
DRAWING NUMBER: 84R-A1.8
PART NUMBER: N/A
SCALE: AS SHOWN
DATE: 2/26/15
DRAWN BY: HDAP ENGINEERING



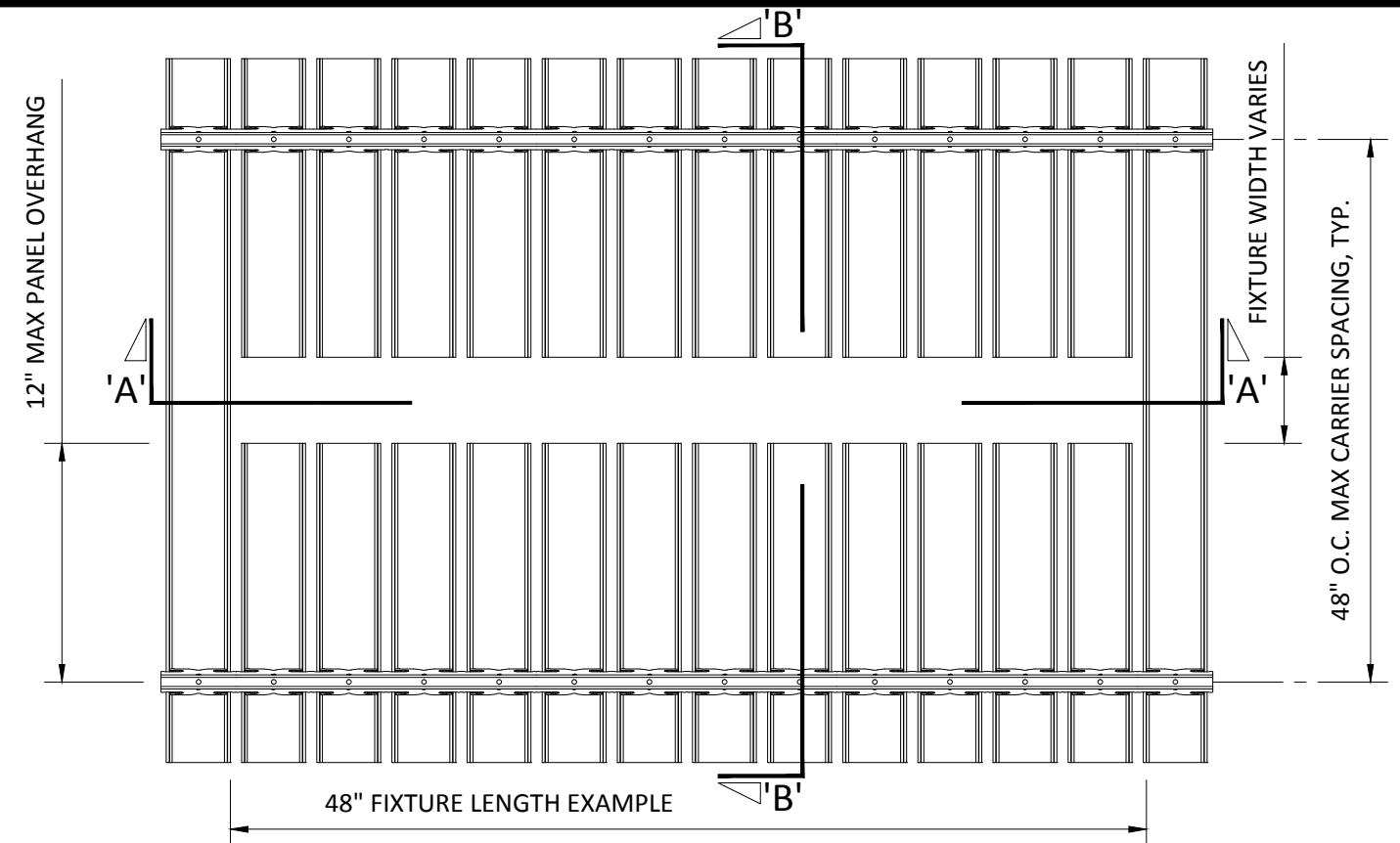
TYPICAL ISOMETRIC

SCALE: NOT TO SCALE



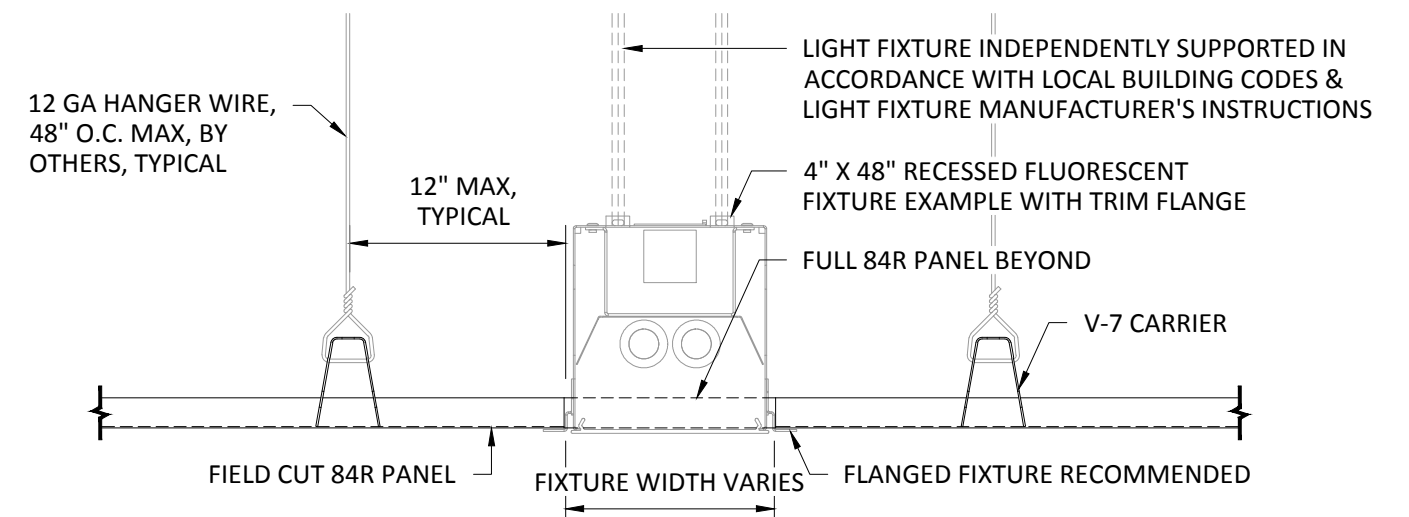
SECTION 'A'

SCALE: 3" = 1'-0"



TOP VIEW

SCALE: NOT TO SCALE



SECTION 'B'

SCALE: 3" = 1'-0"

INTERIOR INSTALLATION

NOTE: FIXTURE WITH TRIM FLANGE NOT BY HUNTER DOUGLAS

HunterDouglasContract

CEILINGS

5015 Oakbrook Parkway, Suite 100
Norcross, GA 30093
800-366-4327 / 770-806-9557
fax: 770-806-0214

All rights reserved. This drawing is the property of Hunter Douglas and may not be copied or multiplied neither wholly nor partly. It may not be submitted for perusal to third parties either.

www.hunterdouglascontract.com

SPECIFICATIONS

(unless noted otherwise)

MATERIAL: 0.020" OR 0.025" ALUMINUM 84R PANEL
0.040" ALUMINUM V-7 CARRIER

FINISH: PAINT / POWDER COAT / DECORATED WOOD FINISH

PERFORATION: #124 (15% OPEN) / #140 (23% OPEN) / NON-PERFORATED

TOLERANCES

(unless noted otherwise)

DECIMAL: .0 +/- .060
.00 +/- .030
.000 +/- .010

FRACTIONAL: +/- $\frac{1}{32}$ "

ANGULAR: +/- $\frac{1}{2}^\circ$ (.5°)

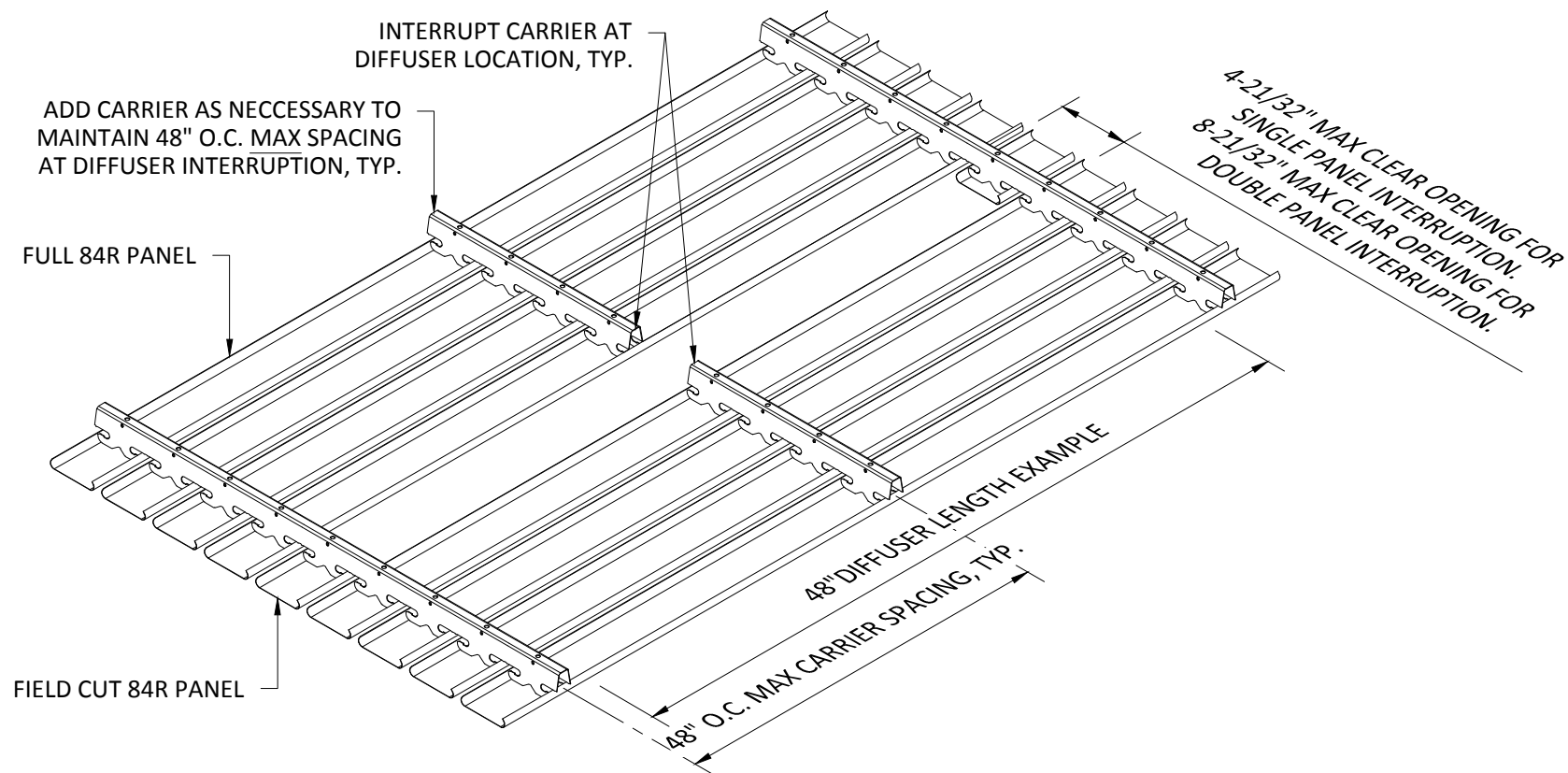
LUXALON
METAL CEILINGS

WoodWright
WOOD CEILINGS

Techstyle
ACOUSTICAL CEILINGS

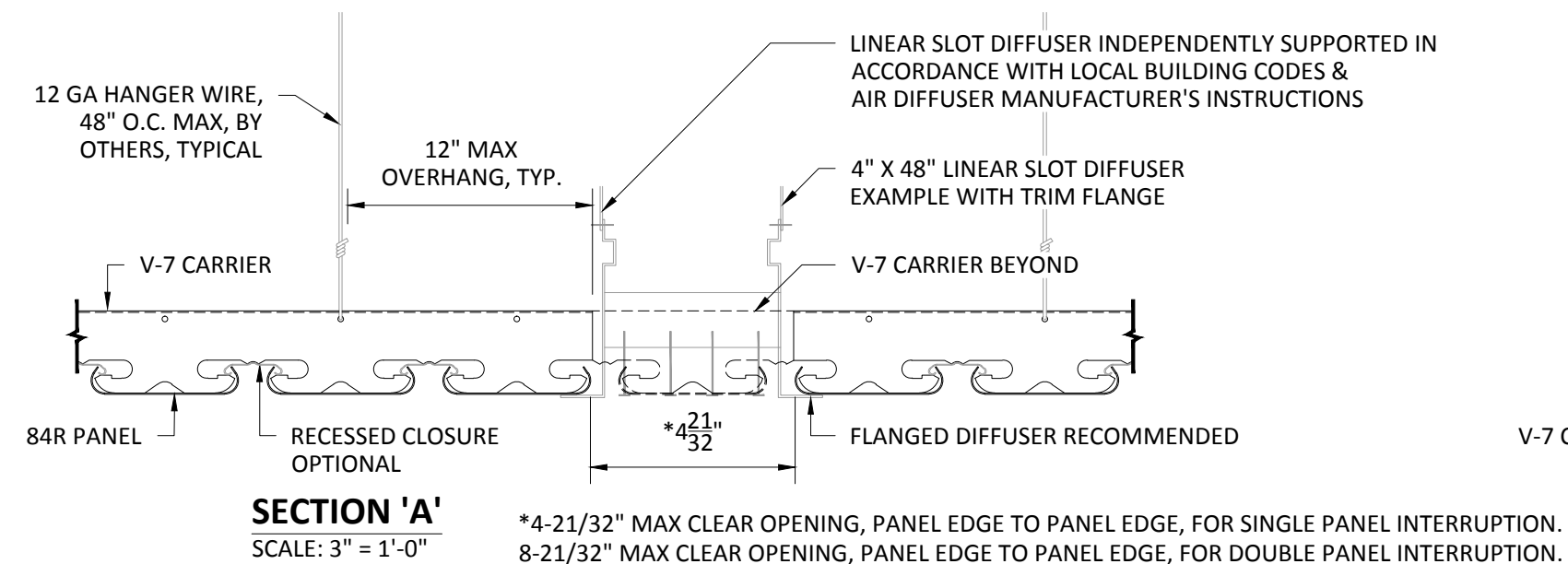
FIELD CUT PANEL FOR TYPICAL FIXTURE

PROJECT: 84R PRODUCT SPECIFICATIONS
DRAWING NUMBER: 84R-A1.9
PART NUMBER: N/A
SCALE: AS SHOWN
DATE: 2/26/15
DRAWN BY: HDAP ENGINEERING



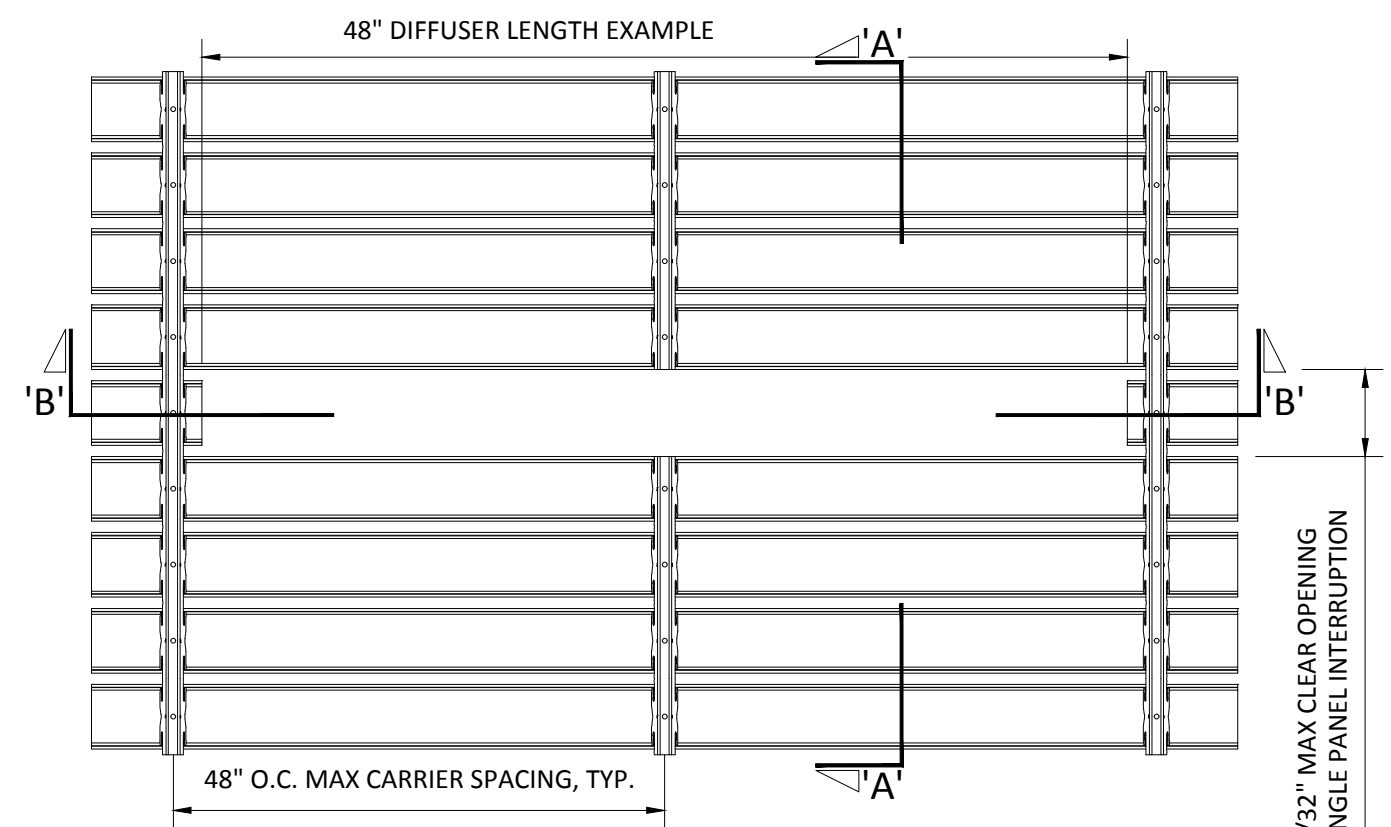
TYPICAL ISOMETRIC

SCALE: NOT TO SCALE



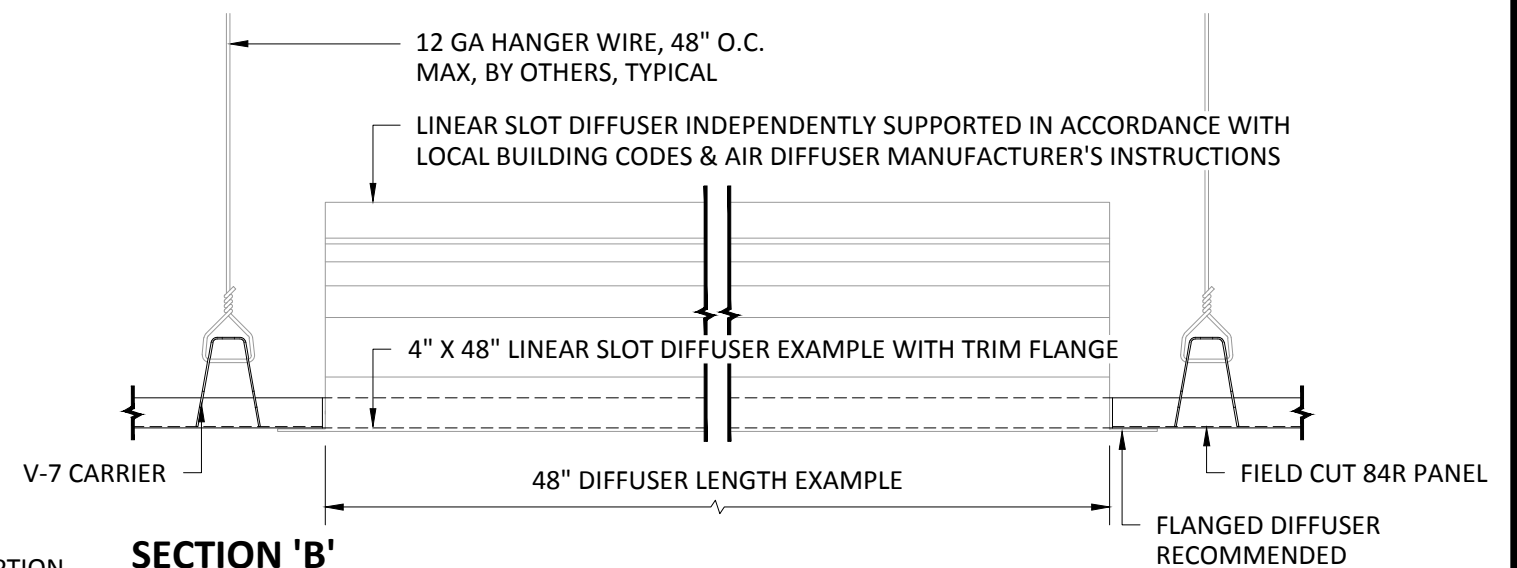
SECTION 'A'

SCALE: 3" = 1'-0"



TOP VIEW

SCALE: NOT TO SCALE



SECTION 'B'

SCALE: 3" = 1'-0"

INTERIOR INSTALLATION

NOTE: DIFFUSER WITH TRIM FLANGE NOT BY HUNTER DOUGLAS

HunterDouglasContract

CEILINGS

5015 Oakbrook Parkway, Suite 100
Norcross, GA 30093
800-366-4327 / 770-806-9557
fax: 770-806-0214

All rights reserved. This drawing is the property of Hunter Douglas and may not be copied or multiplied neither wholly nor partly. It may not be submitted for perusal to third parties either.

www.hunterdouglascontract.com

SPECIFICATIONS

(unless noted otherwise)

MATERIAL: 0.020" OR 0.025" ALUMINUM 84R PANEL
0.040" ALUMINUM V-7 CARRIER

FINISH: PAINT / POWDER COAT / DECORATED WOOD FINISH

PERFORATION: #124 (15% OPEN) / #140 (23% OPEN) / NON-PERFORATED

TOLERANCES

(unless noted otherwise)

DECIMAL: .0 +/- .060
.00 +/- .030
.000 +/- .010

FRACTIONAL: +/- $\frac{1}{32}$ "

ANGULAR: +/- $\frac{1}{2}^\circ$ (.5°)

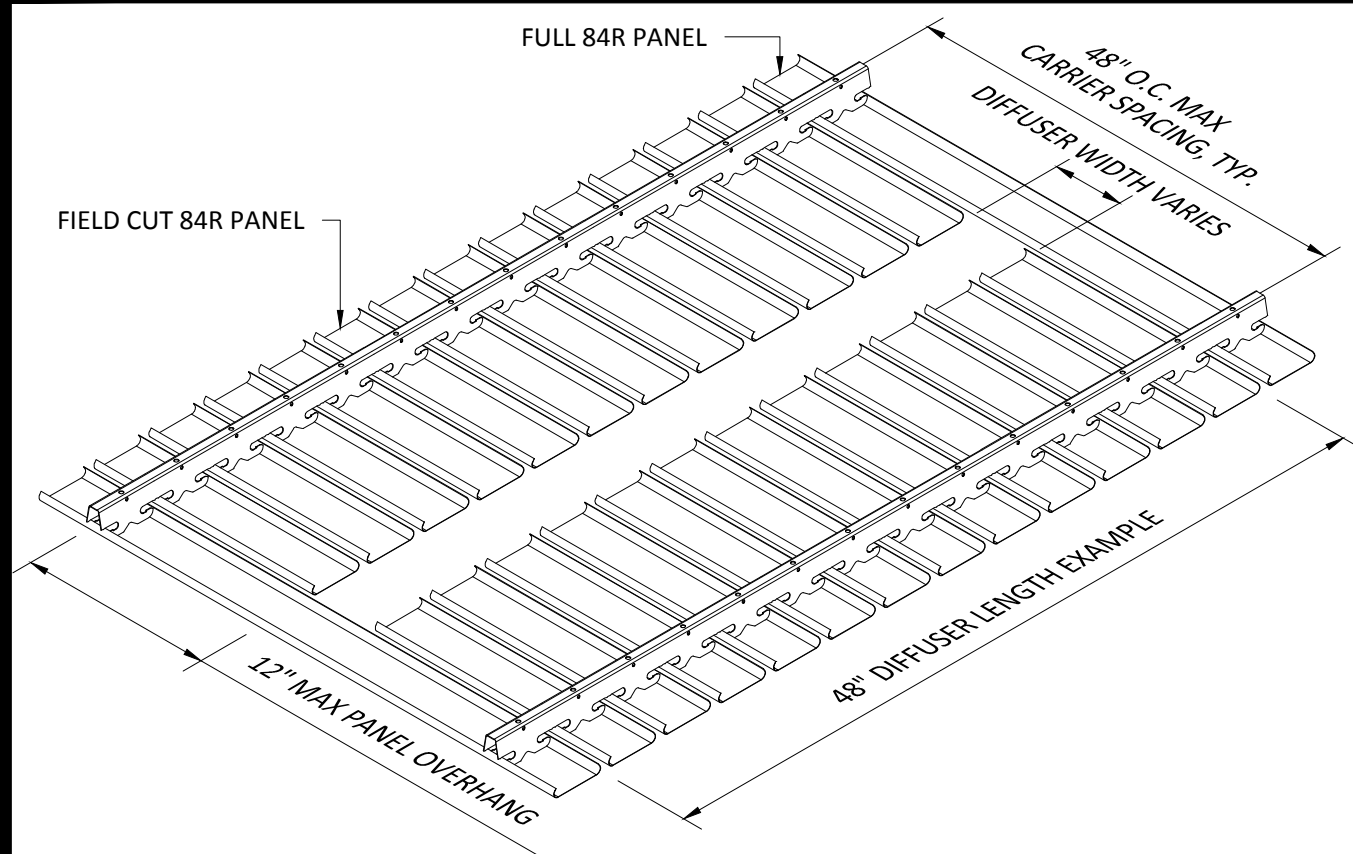
LUXALON
METAL CEILINGS

WoodWright
WOOD CEILINGS

Techstyle
ACOUSTICAL CEILINGS

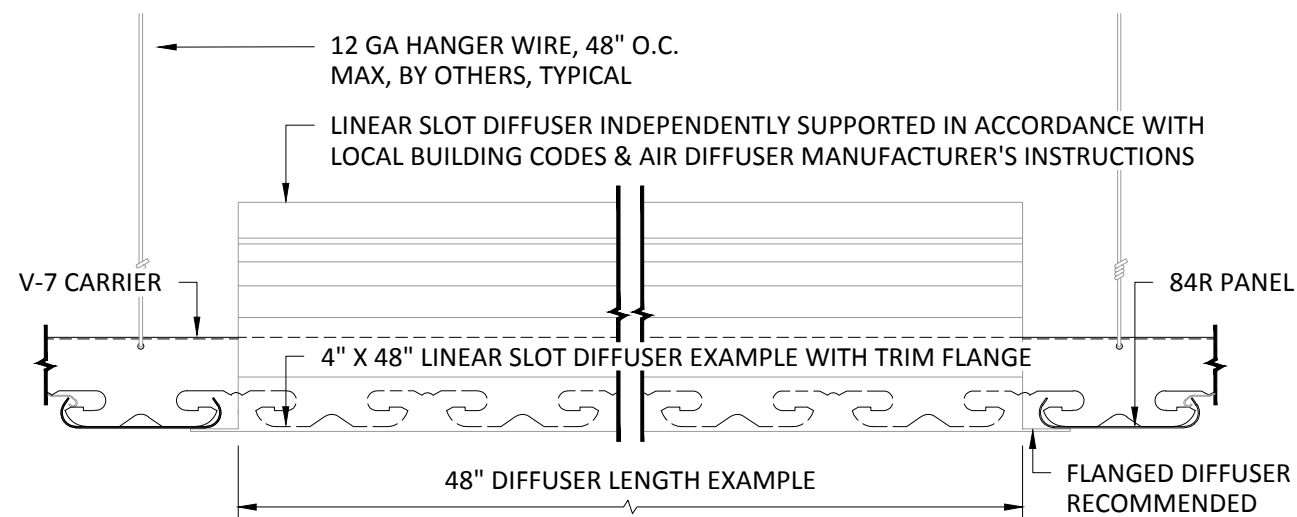
INTERRUPTED PANEL FOR TYPICAL DIFFUSER

PROJECT: 84R PRODUCT SPECIFICATIONS
DRAWING NUMBER: 84R-A1.10
PART NUMBER: N/A
SCALE: AS SHOWN
DATE: 2/26/15
DRAWN BY: HDAP ENGINEERING



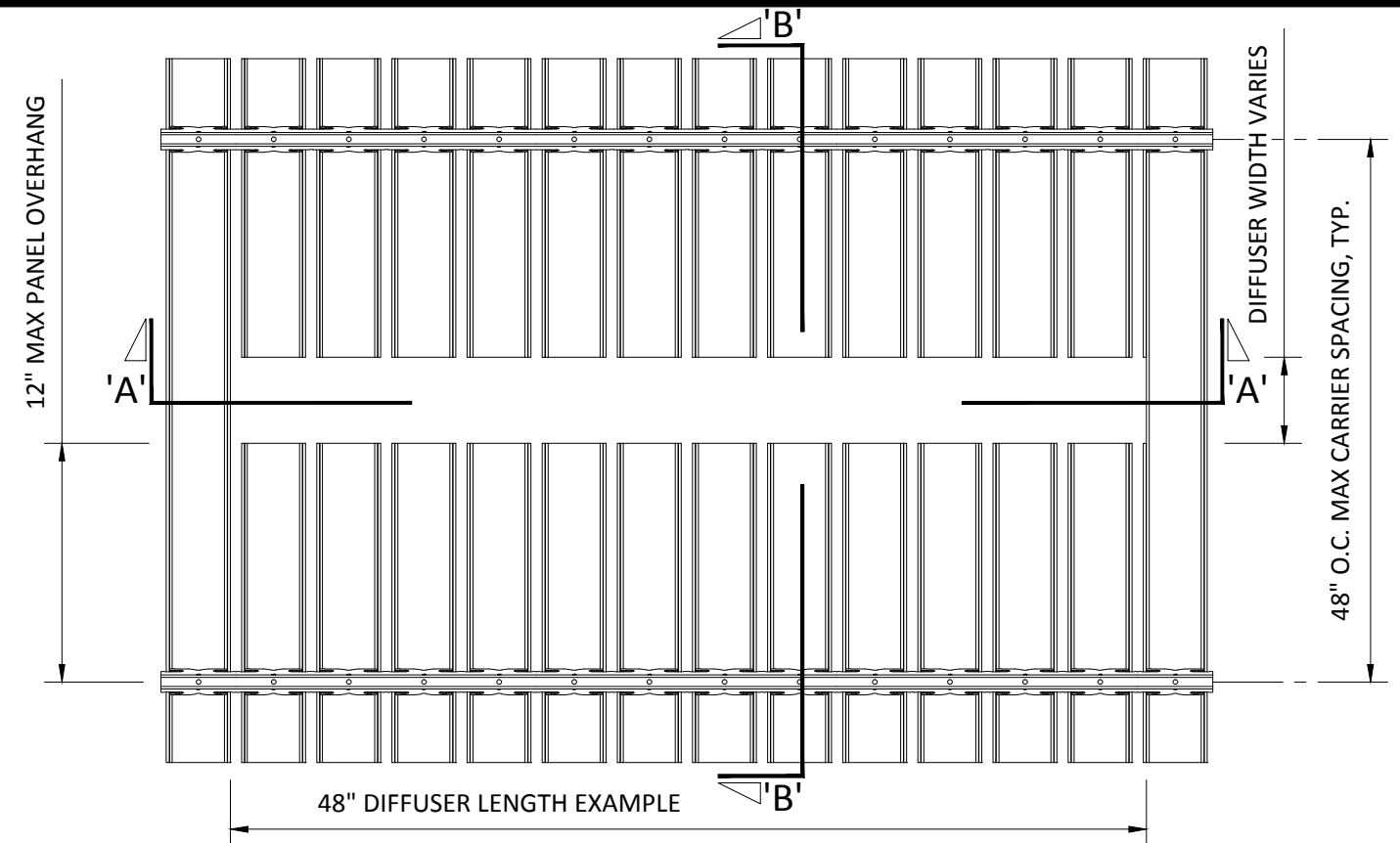
TYPICAL ISOMETRIC

SCALE: NOT TO SCALE



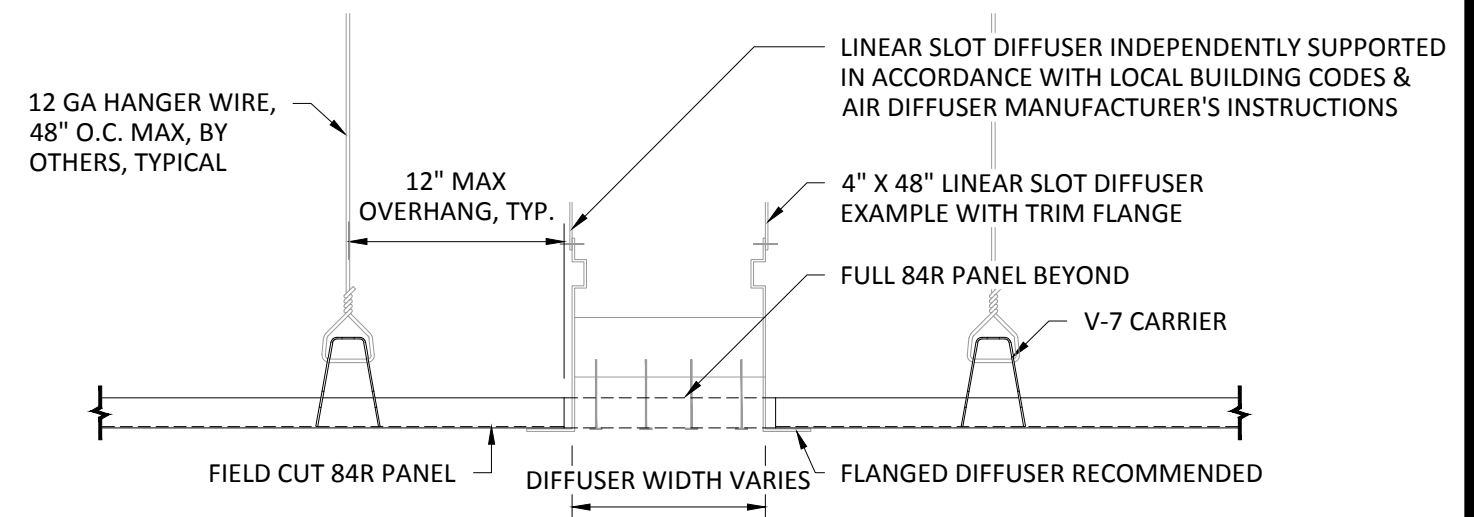
SECTION 'A'

SCALE: 3" = 1'-0"



TOP VIEW

SCALE: NOT TO SCALE



SECTION 'B'

SCALE: 3" = 1'-0"

INTERIOR INSTALLATION

NOTE: DIFFUSER WITH TRIM FLANGE NOT BY HUNTER DOUGLAS

HunterDouglasContract

CEILINGS

5015 Oakbrook Parkway, Suite 100
Norcross, GA 30093
800-366-4327 / 770-806-9557
fax: 770-806-0214

All rights reserved. This drawing is the property of Hunter Douglas and may not be copied or multiplied neither wholly nor partly. It may not be submitted for perusal to third parties either.

www.hunterdouglascontract.com

SPECIFICATIONS

(unless noted otherwise)

MATERIAL: 0.020" OR 0.025" ALUMINUM 84R PANEL
0.040" ALUMINUM V-7 CARRIER

FINISH: PAINT / POWDER COAT / DECORATED WOOD FINISH

PERFORATION: #124 (15% OPEN) / #140 (23% OPEN) / NON-PERFORATED

TOLERANCES

(unless noted otherwise)

DECIMAL: .0 +/- .060
.00 +/- .030
.000 +/- .010

FRACTIONAL: +/- $\frac{1}{32}$ "

ANGULAR: +/- $\frac{1}{2}^\circ$ (.5°)

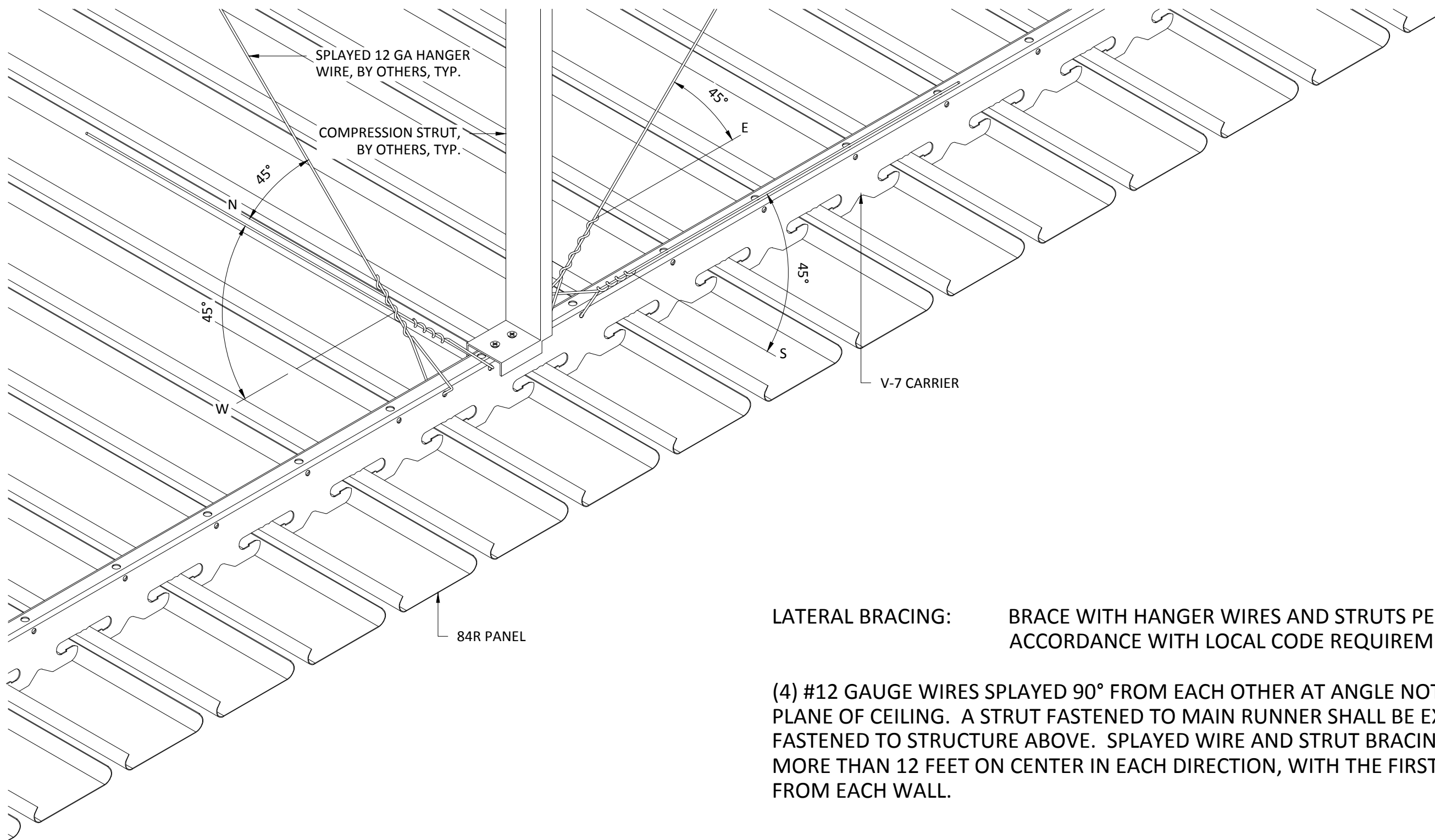
LUXALON
METAL CEILINGS

WoodWright
WOOD CEILINGS

Techstyle
ACOUSTICAL CEILINGS

FIELD CUT PANEL FOR TYPICAL DIFFUSER

PROJECT: 84R PRODUCT SPECIFICATIONS
DRAWING NUMBER: 84R-A1.11
PART NUMBER: N/A
SCALE: AS SHOWN
DATE: 2/26/15
DRAWN BY: HDAP ENGINEERING



LATERAL BRACING: BRACE WITH HANGER WIRES AND STRUTS PER ASTM E-580 AND IN ACCORDANCE WITH LOCAL CODE REQUIREMENTS.

(4) #12 GAUGE WIRES SPLAYED 90° FROM EACH OTHER AT ANGLE NOT EXCEEDING 45° FROM PLANE OF CEILING. A STRUT FASTENED TO MAIN RUNNER SHALL BE EXTENDED TO AND FASTENED TO STRUCTURE ABOVE. SPLAYED WIRE AND STRUT BRACING TO BE PLACED NOT MORE THAN 12 FEET ON CENTER IN EACH DIRECTION, WITH THE FIRST POINT WITHIN 6 FEET FROM EACH WALL.

INTERIOR INSTALLATION

HunterDouglasContract

CEILINGS

5015 Oakbrook Parkway, Suite 100
Norcross, GA 30093
800-366-4327 / 770-806-9557
fax: 770-806-0214

All rights reserved. This drawing is the property of Hunter Douglas and may not be copied or multiplied neither wholly nor partly. It may not be submitted for perusal to third parties either.

www.hunterdouglascontract.com

SPECIFICATIONS

(unless noted otherwise)

MATERIAL: 0.020" OR 0.025" ALUMINUM 84R PANEL
0.040" ALUMINUM V-7 CARRIER

FINISH: PAINT / POWDER COAT / DECORATED WOOD FINISH

PERFORATION: #124 (15% OPEN) / #140 (23% OPEN) / NON-PERFORATED

LUXALON®
METAL CEILINGS

WoodWright®
WOOD CEILINGS

Techstyle®
ACOUSTICAL CEILINGS

TOLERANCES

(unless noted otherwise)

DECIMAL: .0 +/- .060
.00 +/- .030
.000 +/- .010

FRACTIONAL: +/- $\frac{1}{32}$ "

ANGULAR: +/- $\frac{1}{2}^\circ$ (.5°)

SEISMIC SPECIFICATIONS

PROJECT: 84R PRODUCT SPECIFICATIONS
DRAWING NUMBER: 84R-A1.12
PART NUMBER: N/A
SCALE: AS SHOWN
DATE: 2/26/15
DRAWN BY: HDAP ENGINEERING