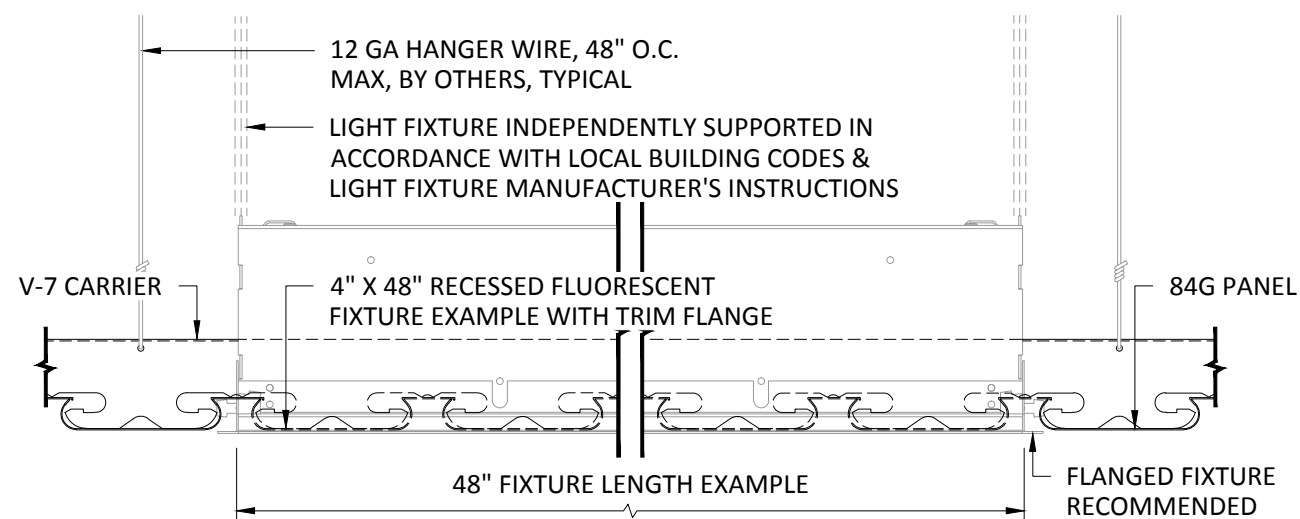


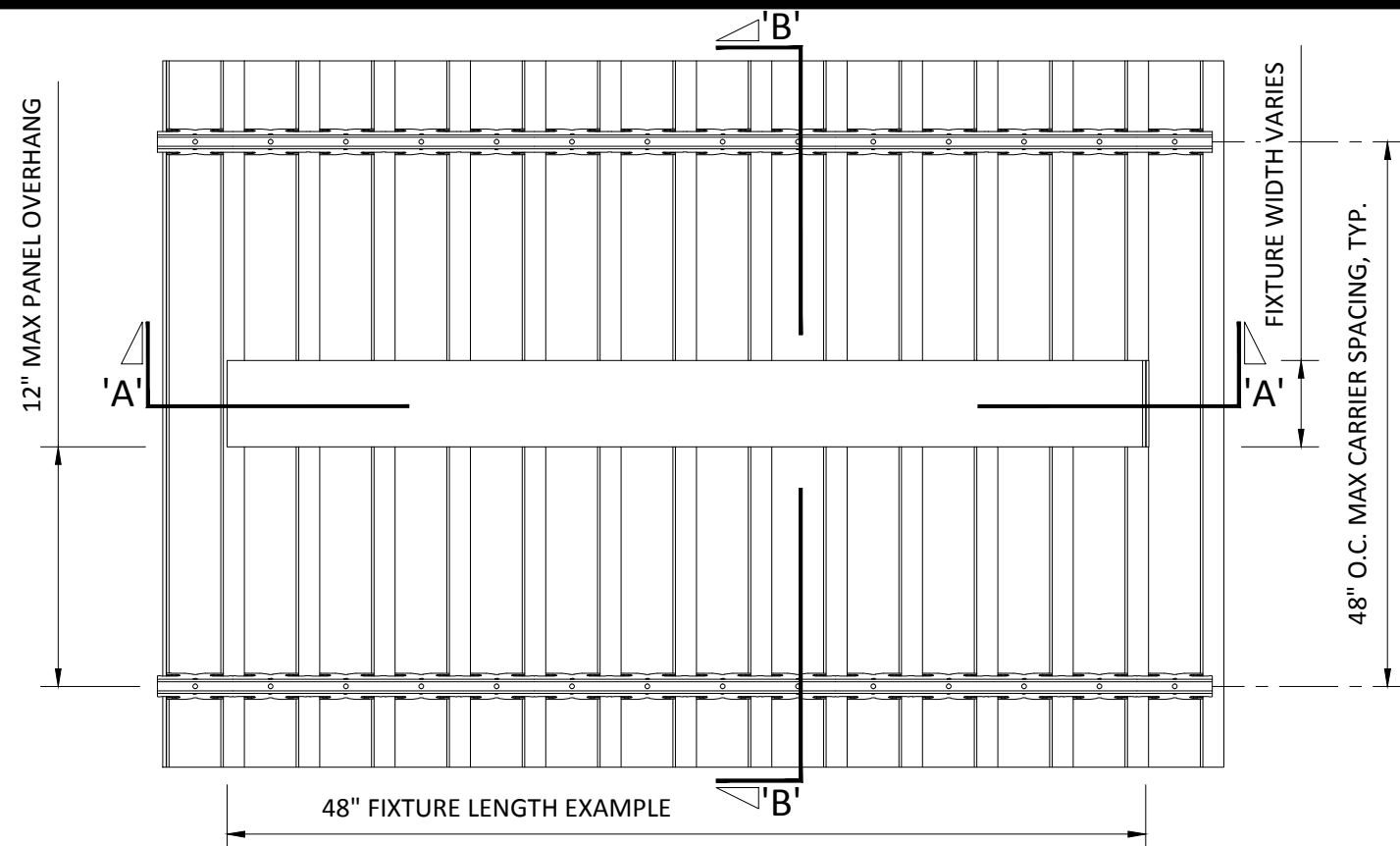
### TYPICAL ISOMETRIC

SCALE: NOT TO SCALE



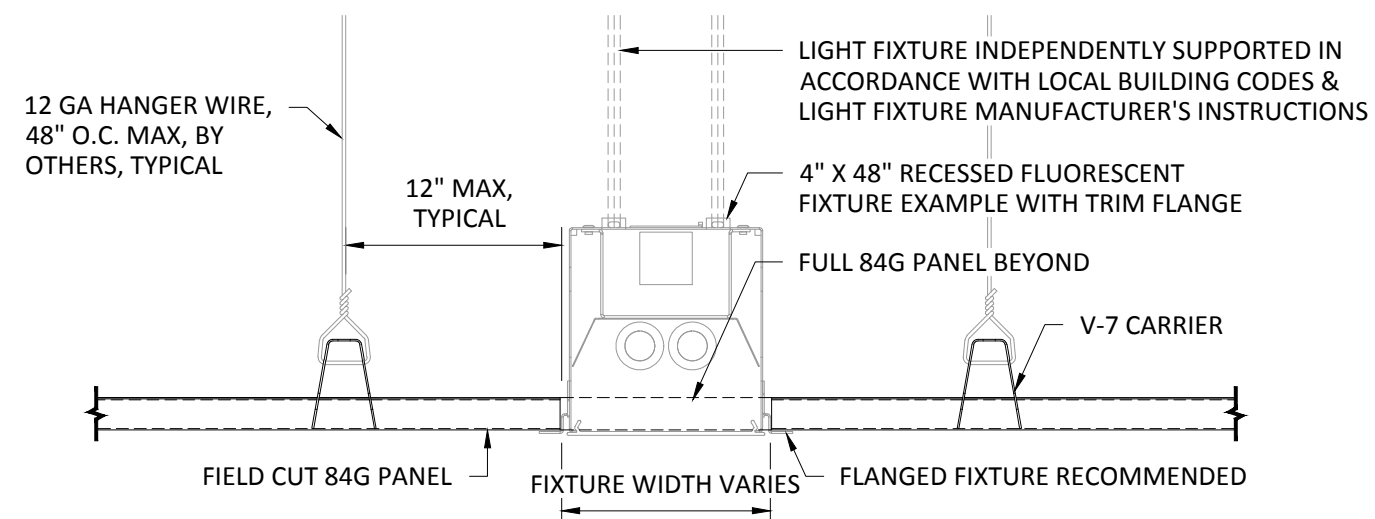
### SECTION 'A'

SCALE: 3" = 1'-0"



### TOP VIEW

SCALE: NOT TO SCALE



### SECTION 'B'

SCALE: 3" = 1'-0"

## INTERIOR INSTALLATION

NOTE: FIXTURE WITH TRIM FLANGE NOT BY HUNTER DOUGLAS

# HunterDouglasContract

### CEILINGS

5015 Oakbrook Parkway, Suite 100  
Norcross, GA 30093  
800-366-4327 / 770-806-9557  
fax: 770-806-0214

All rights reserved. This drawing is the property of Hunter Douglas and may not be copied or multiplied neither wholly nor partly. It may not be submitted for perusal to third parties either.

www.hunterdouglascontract.com

### SPECIFICATIONS

(unless noted otherwise)

MATERIAL: 0.020" OR 0.025" ALUMINUM 84G PANEL  
0.040" ALUMINUM V-7 CARRIER

FINISH: PAINT / POWDER COAT / DECORATED WOOD FINISH

PERFORATION: #124 (15% OPEN) / #140 (23% OPEN) / NON-PERFORATED

### TOLERANCES

(unless noted otherwise)

DECIMAL: .0 +/- .060  
.00 +/- .030  
.000 +/- .010

FRACTIONAL: +/-  $\frac{1}{32}$ "

ANGULAR: +/-  $\frac{1}{2}^\circ$  (.5°)

**LUXALON**  
METAL CEILINGS

**WoodWright**  
WOOD CEILINGS

**Techstyle**  
ACOUSTICAL CEILINGS

### FIELD CUT PANEL FOR TYPICAL FIXTURE

PROJECT: 84G PRODUCT SPECIFICATIONS  
DRAWING NUMBER: 84G-A1.9  
PART NUMBER: N/A  
SCALE: AS SHOWN  
DATE: 2/26/15  
DRAWN BY: HDAP ENGINEERING