

TYPICAL SYSTEM SECTION

SCALE: 3" = 1'-0"

15/16" GRID, BY OTHERS
SEE DETAIL A1.2

BEAM END CAP
SEE DETAIL A1.3

VIEW FROM ABOVE

SCALE: NOT TO SCALE

INTERIOR INSTALLATION

SUSPENSION SPECIFICATIONS.
SEE DETAIL A1.2

12" MAX MAIN TEE
OVERHANG, TYP.

48" MAX O.C. HANGER WIRE SPACING, TYP.

12 GA HANGER WIRE, BY
OTHERS, NOT BY HUNTER
DOUGLAS. SEE DETAIL A1.2

BEAM SPECIFICATIONS
SEE DETAIL A1.1

HANGER BRACKET
ASSEMBLY
SEE DETAIL A1.3

48" MAX O.C. MAIN TEE SPACING, TYP.

6" O.C. BEAM SPACING
SHOWN, ACTUAL
CAN VARY

12" MAX BEAM
OVERHANG, TYP.

*SEE SHEET A1.1 FOR AVAILABLE BEAM SIZES



5015 Oakbrook Parkway, Suite 100
Norcross, GA 30093
T 800.366.4327
F 770.806.0214
HDarchitectural.com

All rights reserved. This drawing is the property of Hunter Douglas. It may not be copied or multiplied, neither wholly nor partly. It may not be submitted for perusal to third parties.

SPECIFICATIONS

(unless noted otherwise)

MATERIAL: .025" | .032" | .040" ALUMINUM

FINISH: PAINT | POWDER COAT | DECORATED WOOD FINISH | WOOD VENEER

PERFORATION: NON-PERFORATED | #103 | #106 | #111 | #119 | #150

OVERALL ISOMETRIC VIEW

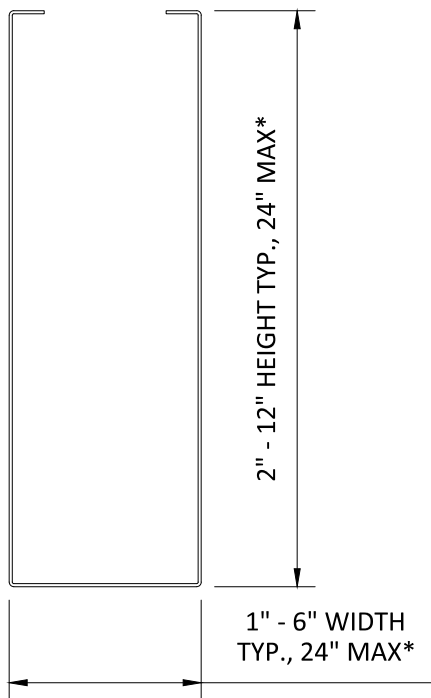
PROJECT: TAVOLA LEVELS SPECIFICATIONS

DRAWING NUMBER: TAVOLEV-A1.0

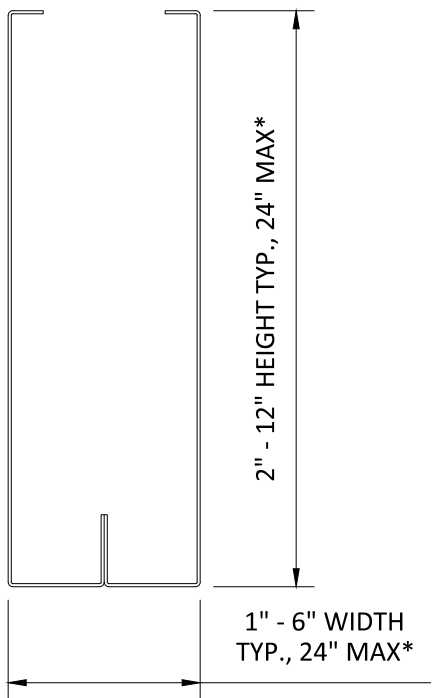
SCALE: AS SHOWN

DRAWN BY: HDA ENGINEERING

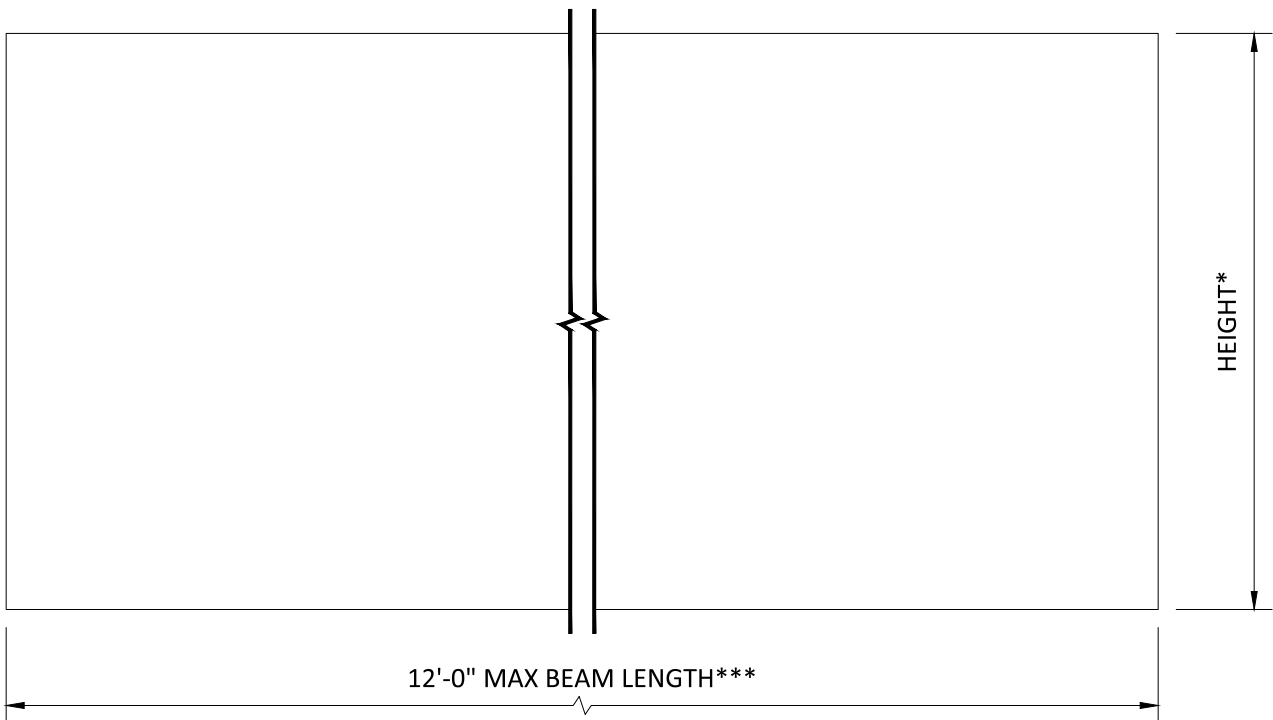
DATE: 8/15/16



1-PIECE BEAM



2-PIECE BEAM**



BEAM END & SIDE VIEW
SCALE: NOT TO SCALE

BEAM SIZES

BEAM SIZES ARE DIMENSIONED WIDTH X HEIGHT

*PROFILES ARE AVAILABLE IN 1/2" INCREMENTS, CONTACT HUNTER DOUGLAS FOR OTHER SIZES

**CERTAIN PROFILES MAY BE 2-PIECE FACTORY-ASSEMBLED BEAMS, CONTACT HUNTER DOUGLAS

***MAX LENGTHS MAY BE PROFILE-SPECIFIC, CONTACT HUNTER DOUGLAS

BEAM LENGTHS AVAILABLE IN ±1/8" INCREMENTS, MINIMUM QUANTITIES MAY APPLY

BEAM MATERIAL

.025", .032", .040" ALUMINUM

BEAM FINISHES

PAINTED & POWDER COATED

DECORATED WOOD FINISH (POWDER COATED)

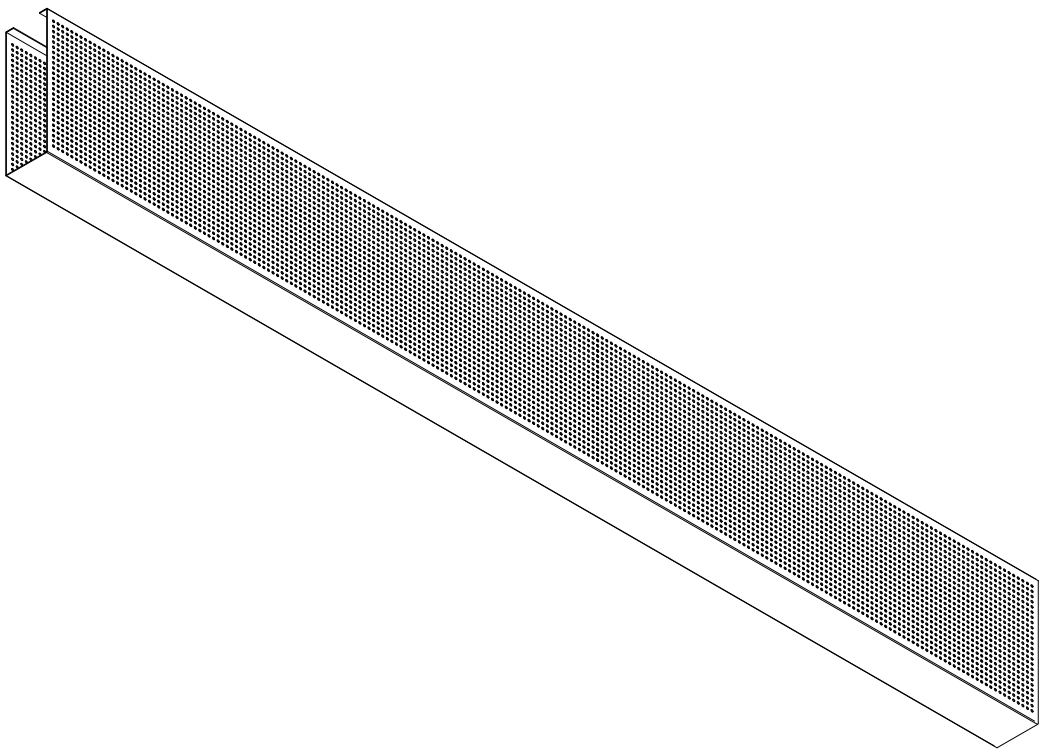
WOOD VENEER (NON-PERFORATED ONLY)

PERFORATIONS

PERFORATION	% OPEN
103	20.0%
106	16.0%
111	4.0%
119	8.0%
150	4.0%

STANDARD PERFORATION BORDERS ARE 1/4" NOM.

PERFORATIONS ARE ONLY ON THE SIDES OF THE BEAM



BEAM SIZES, MATERIALS, FINISHES, & PERFORATIONS
SCALE: NOT TO SCALE



5015 Oakbrook Parkway, Suite 100
Norcross, GA 30093
T 800.366.4327
F 770.806.0214
HDarchitectural.com

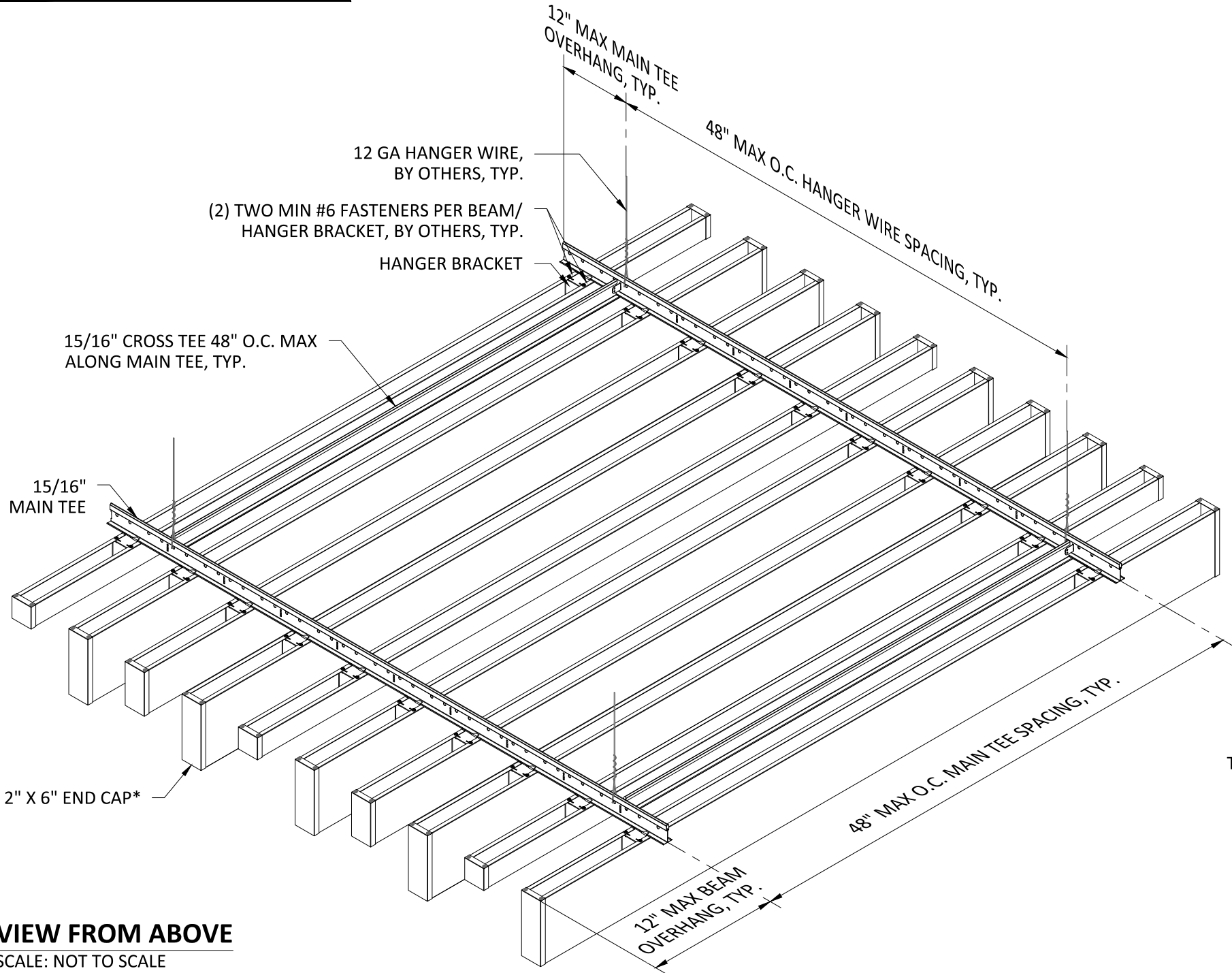
All rights reserved. This drawing is the property of Hunter Douglas. It may not be copied or multiplied, neither wholly nor partly. It may not be submitted for perusal to third parties.

SPECIFICATIONS
(unless noted otherwise)

MATERIAL: .025" | .032" | .040" ALUMINUM
FINISH: PAINT | POWDER COAT | DECORATED WOOD FINISH | WOOD VENEER
PERFORATION: NON-PERFORATED | #103 | #106 | #111 | #119 | #150

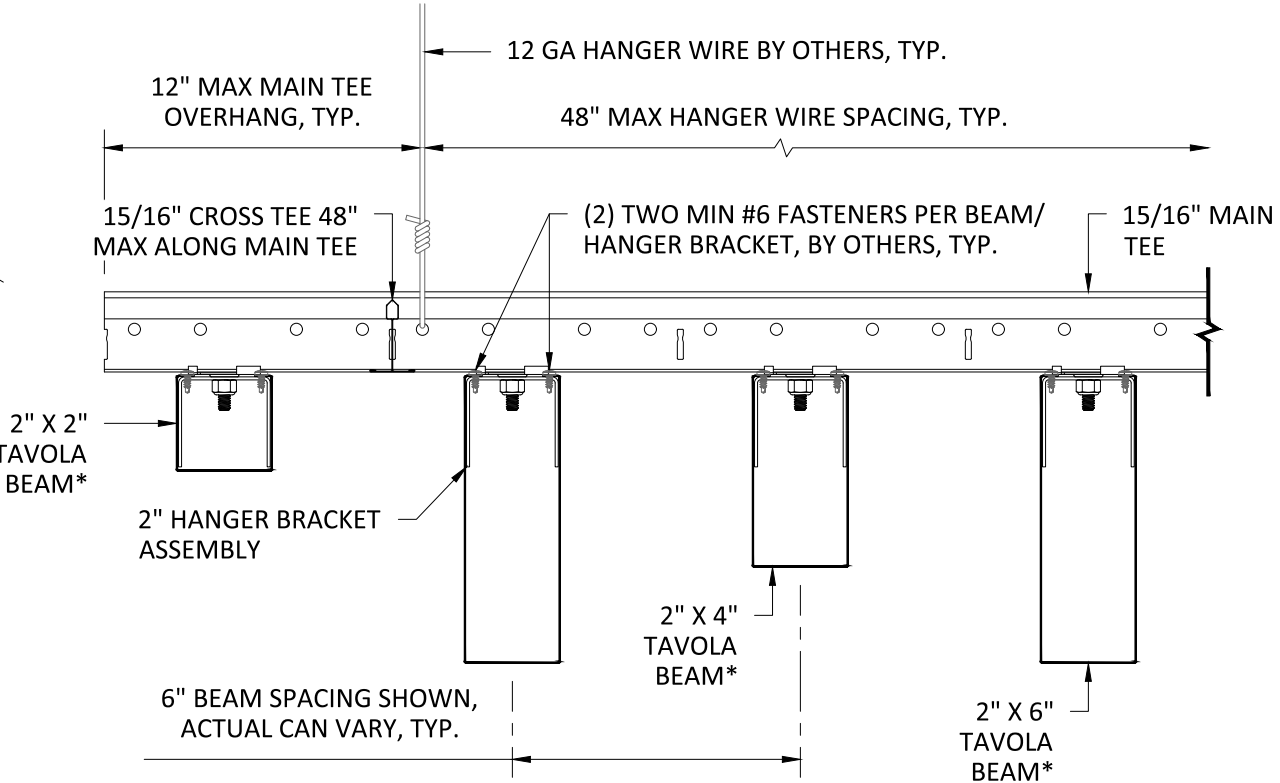
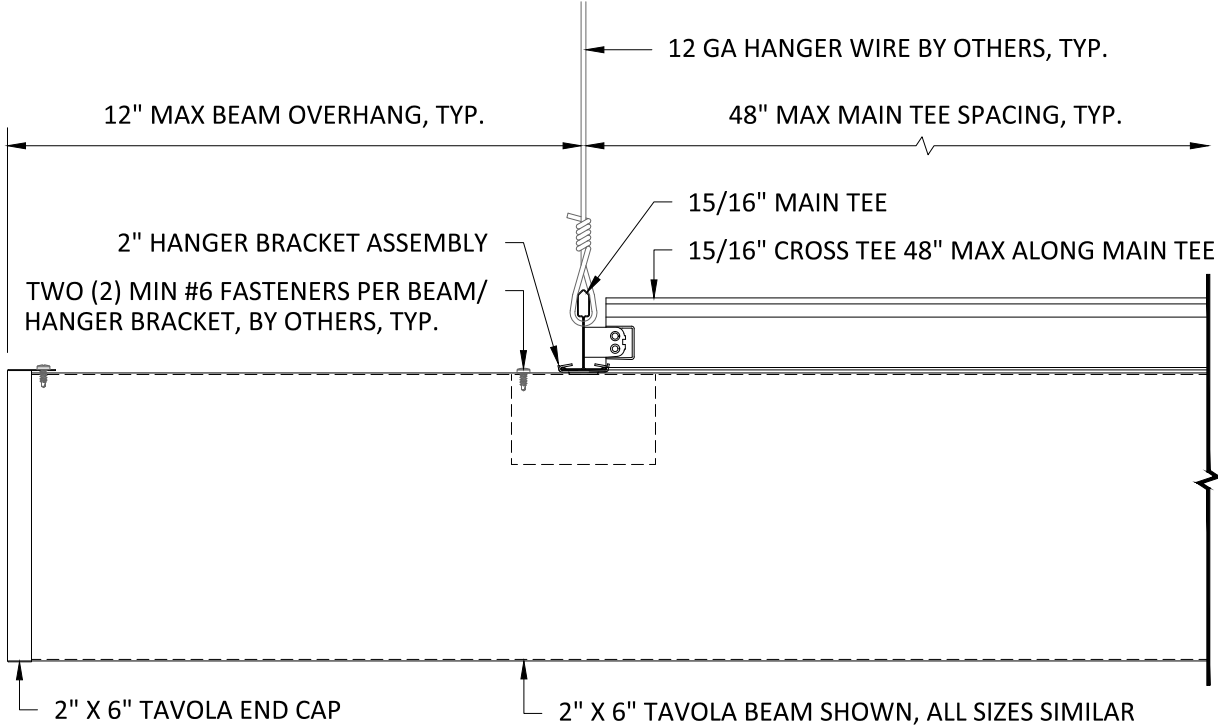
BEAM SPECIFICATIONS
PROJECT: TAVOLA LEVELS SPECIFICATIONS
DRAWING NUMBER: TAVOLEV-A1.1
SCALE: AS SHOWN
DRAWN BY: HDA ENGINEERING
DATE: 8/15/16

NOTE:
ATTACHMENT TO STRUCTURE
DESIGNED AND PROVIDED BY
OTHERS, NOT BY HUNTER DOUGLAS



VIEW FROM ABOVE
SCALE: NOT TO SCALE

INTERIOR INSTALLATION



TYPICAL SECTIONS
SCALE: 3" = 1'-0"

*SEE SHEET A1.1 FOR AVAILABLE BEAM SIZES



5015 Oakbrook Parkway, Suite 100
Norcross, GA 30093
T 800.366.4327
F 770.806.0214
HDarchitectural.com

All rights reserved. This drawing is the property of Hunter Douglas. It may not be copied or multiplied, neither wholly nor partly. It may not be submitted for perusal to third parties.

SPECIFICATIONS
(unless noted otherwise)

MATERIAL: .025" | .032" | .040" ALUMINUM
FINISH: PAINT | POWDER COAT | DECORATED WOOD FINISH | WOOD VENEER
PERFORATION: NON-PERFORATED | #103 | #106 | #111 | #119 | #150

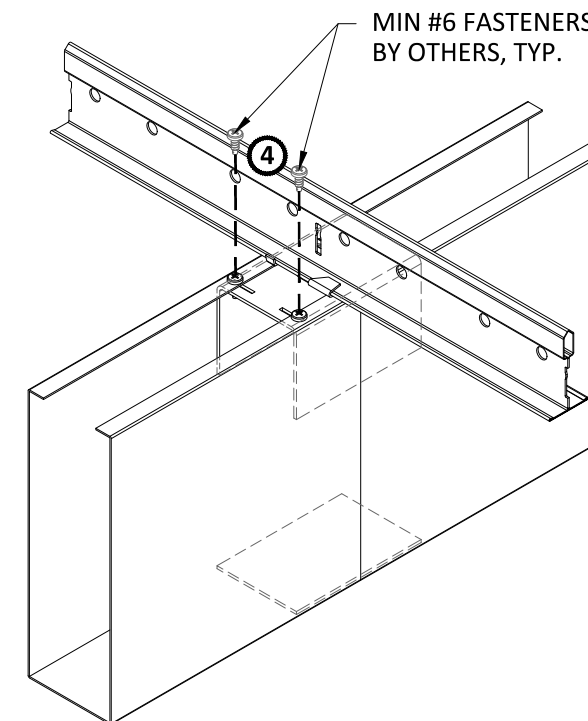
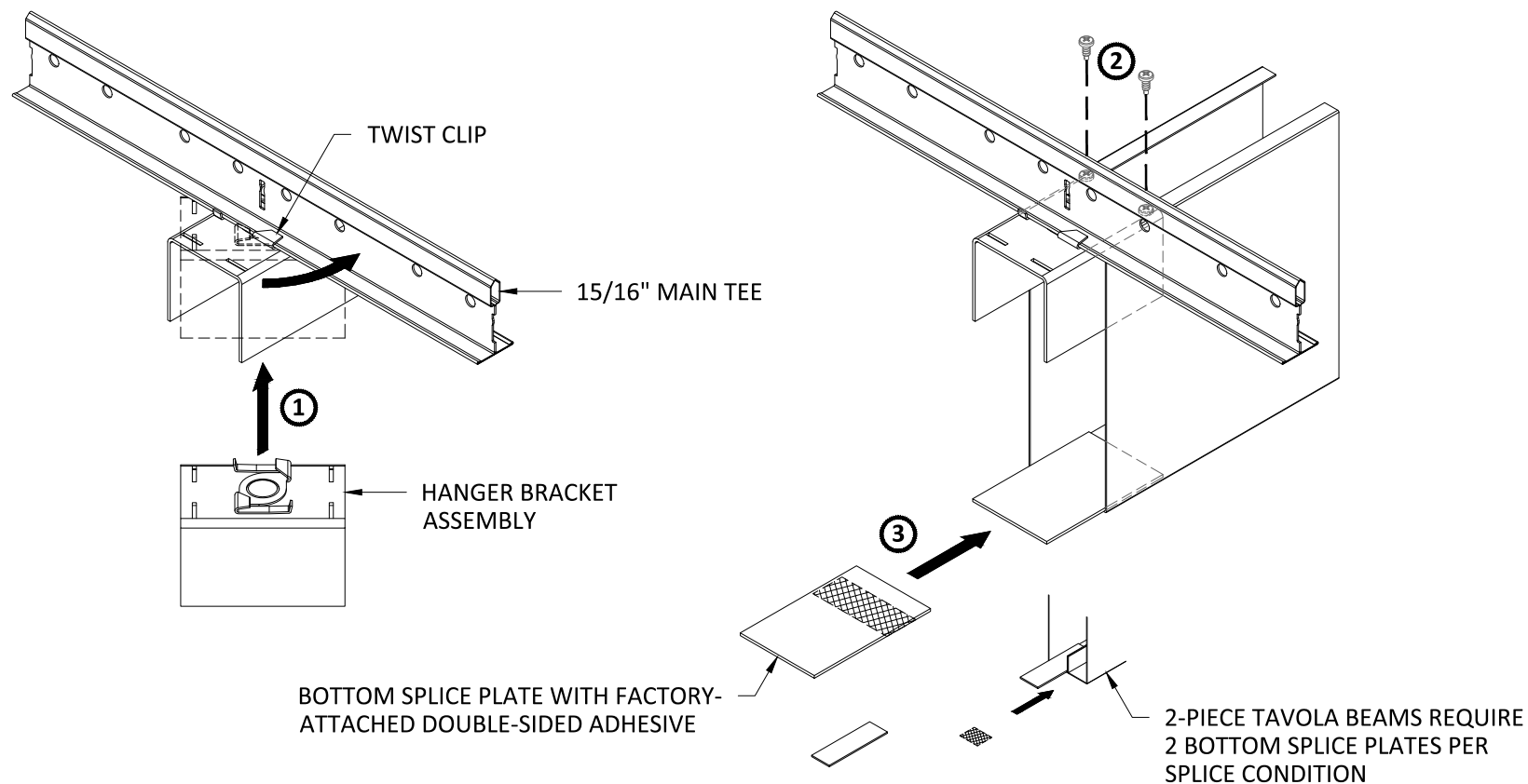
SUSPENSION SPECIFICATIONS
PROJECT: TAVOLA LEVELS SPECIFICATIONS
DRAWING NUMBER: TAVOLEV-A1.2
SCALE: AS SHOWN
DRAWN BY: HDA ENGINEERING
DATE: 8/15/16

- 1 INSERT HANGER BRACKET ASSEMBLY ONTO MAIN TEE AND ROTATE TO ENGAGE TWIST CLIP.
- 2 ADJUST HANGER BRACKET ASSEMBLY TO FINAL POSITION AND FEED FIRST TAVOLA BEAM HALFWAY ONTO HANGER BRACKET. SECURE WITH TWO (2) MIN #6 FASTENERS.
- 3 REMOVE LINER FROM DOUBLE-SIDED ADHESIVE ON BOTTOM SPLICE PLATE AND SECURE HALFWAY INTO FIRST TAVOLA BEAM.
- 4 FEED SECOND TAVOLA BEAM ONTO HANGER BRACKET ASSEMBLY AND BOTTOM PLATE AND SECURE WITH TWO (2) MIN #6 FASTENERS.

NON-SPLICE LOCATIONS: ONLY TWO (2) FASTENERS (1 PER SIDE) ARE REQUIRED AND BOTTOM PLATE IS OMITTED.

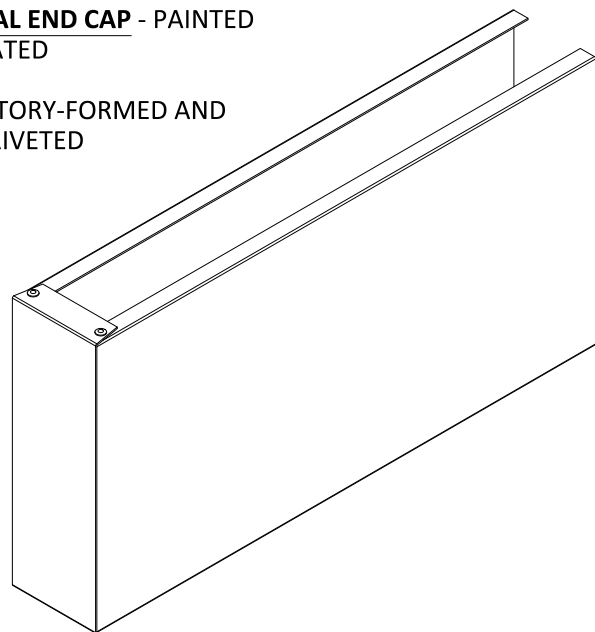
HANGER BRACKET INSTALLATION

SCALE: NOT TO SCALE



INTEGRAL METAL END CAP - PAINTED & POWDER COATED

END CAP IS FACTORY-FORMED AND FACTORY-POP-RIVETED

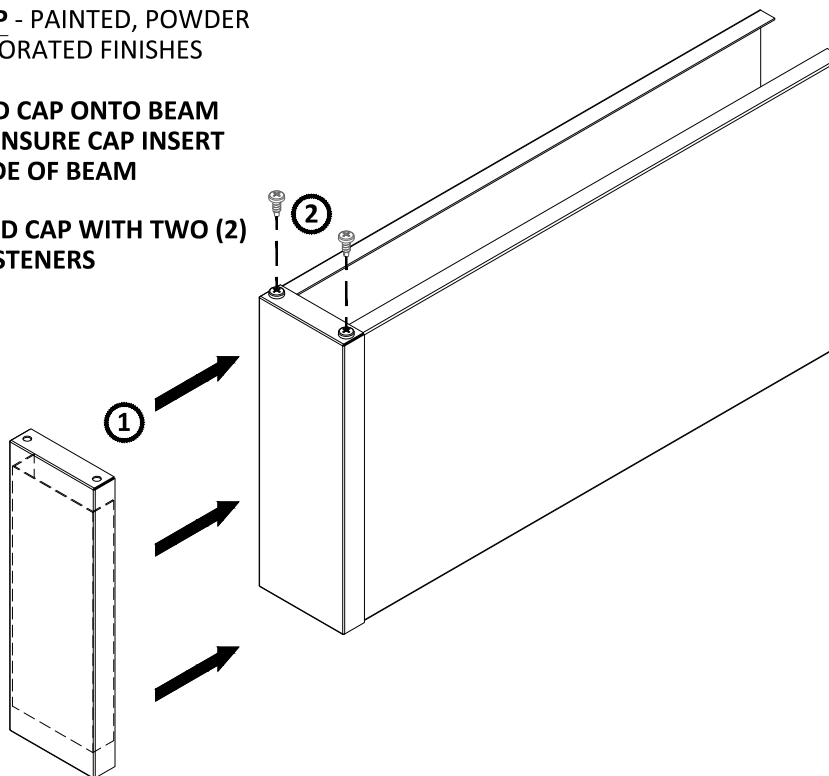


END CAP INSTALLATION

SCALE: NOT TO SCALE

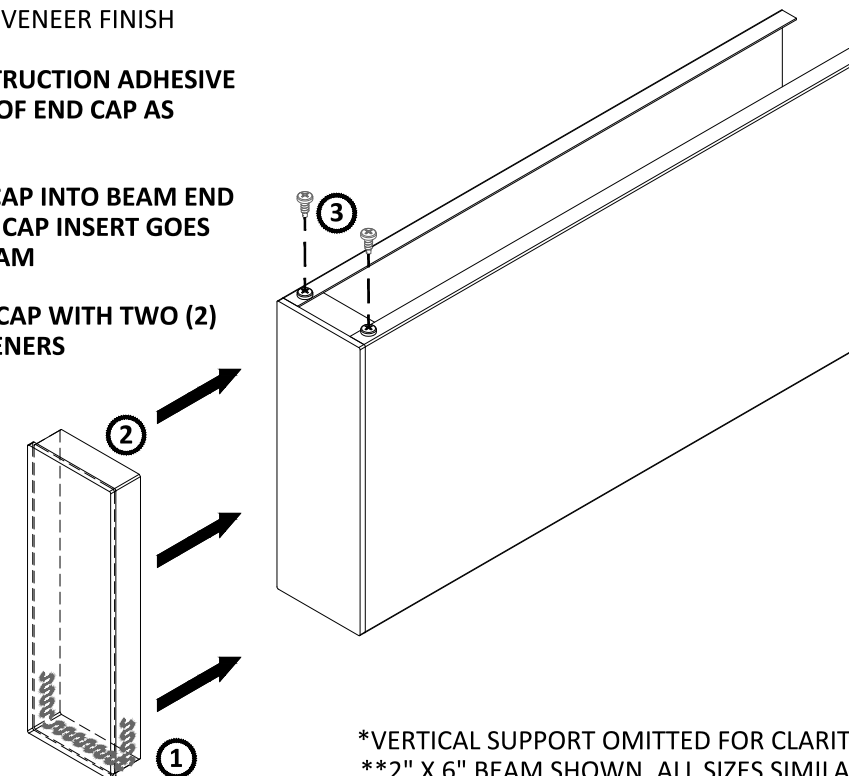
METAL END CAP - PAINTED, POWDER COATED, & DECORATED FINISHES

- 1 INSERT END CAP ONTO BEAM END AND ENSURE CAP INSERT GOES INSIDE OF BEAM
- 2 SECURE END CAP WITH TWO (2) MIN #6 FASTENERS



WOOD END CAP - VENEER FINISH

- 1 APPLY CONSTRUCTION ADHESIVE TO BOTTOM OF END CAP AS NEEDED
- 2 INSERT END CAP INTO BEAM END AND ENSURE CAP INSERT GOES INSIDE OF BEAM
- 3 SECURE END CAP WITH TWO (2) MIN #6 FASTENERS



*VERTICAL SUPPORT OMITTED FOR CLARITY
**2" X 6" BEAM SHOWN, ALL SIZES SIMILAR

SPECIFICATIONS

(unless noted otherwise)

MATERIAL: .025" | .032" | .040" ALUMINUM

FINISH: PAINT | POWDER COAT | DECORATED WOOD FINISH | WOOD VENEER

PERFORATION: NON-PERFORATED | #103 | #106 | #111 | #119 | #150

HANGER BRACKET & END CAP INSTALLATION

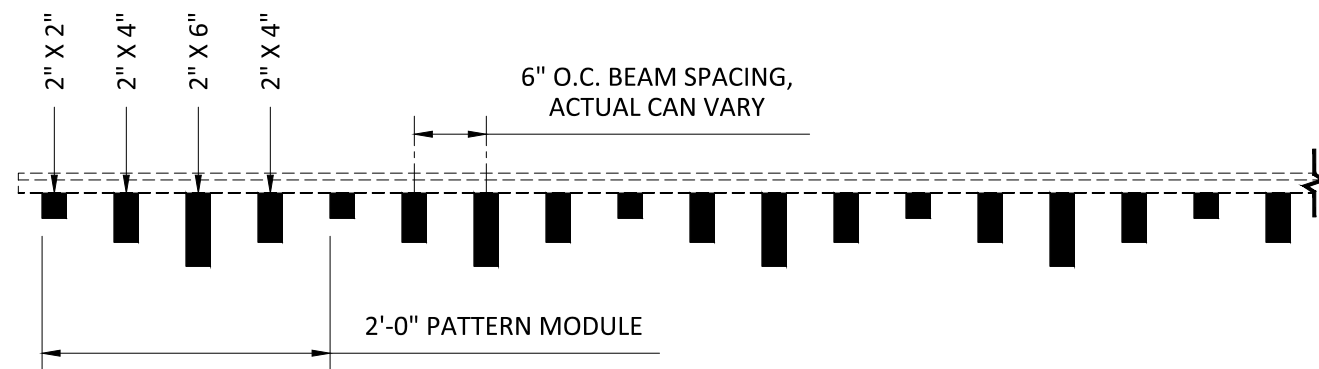
PROJECT: TAVOLA LEVELS SPECIFICATIONS

DRAWING NUMBER: TAVOLEV-A1.3

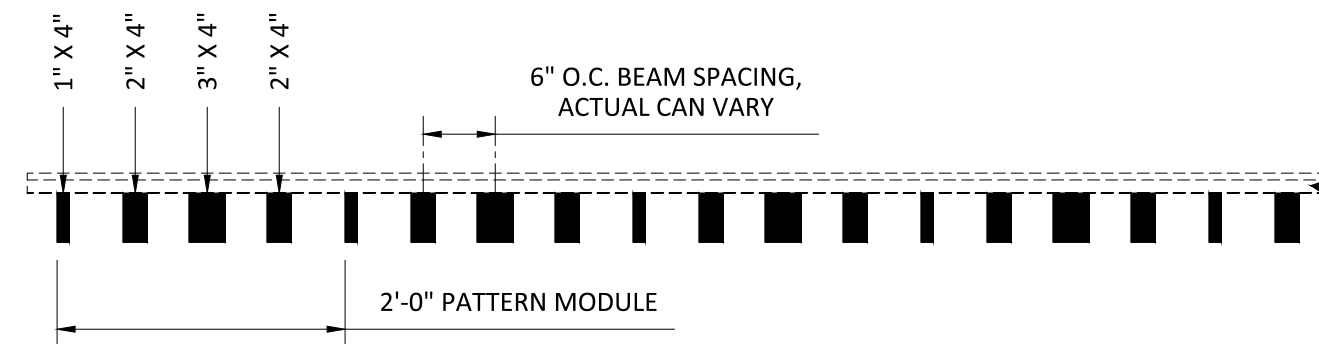
SCALE: AS SHOWN

DRAWN BY: HDA ENGINEERING

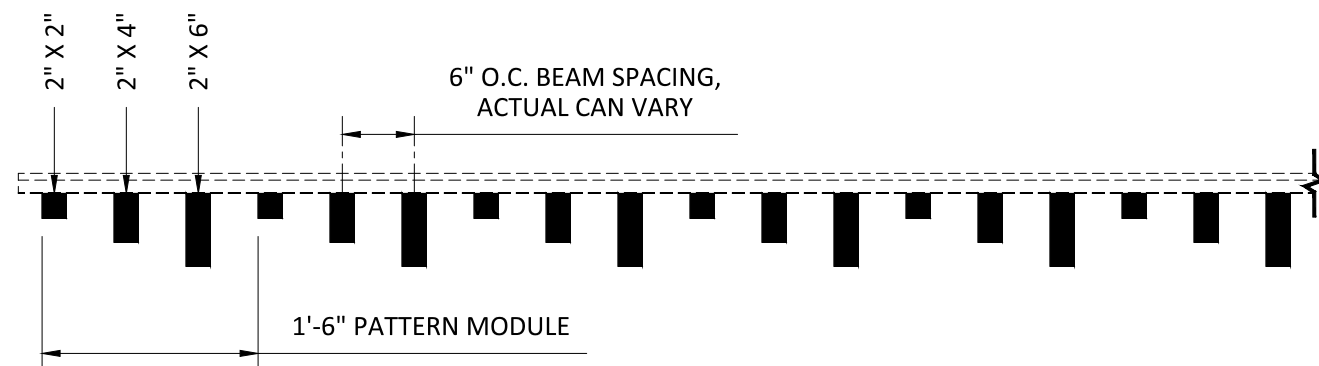
DATE: 8/15/16



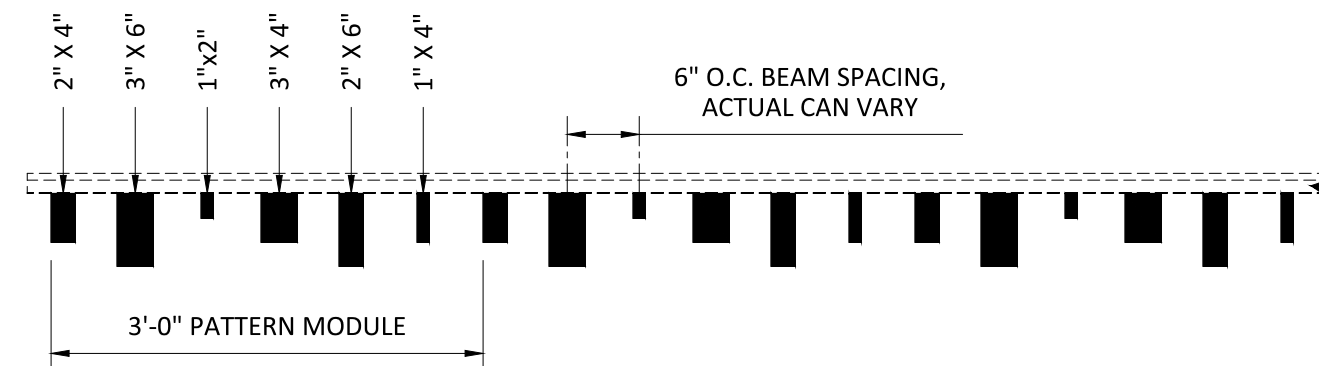
WAVE PATTERN



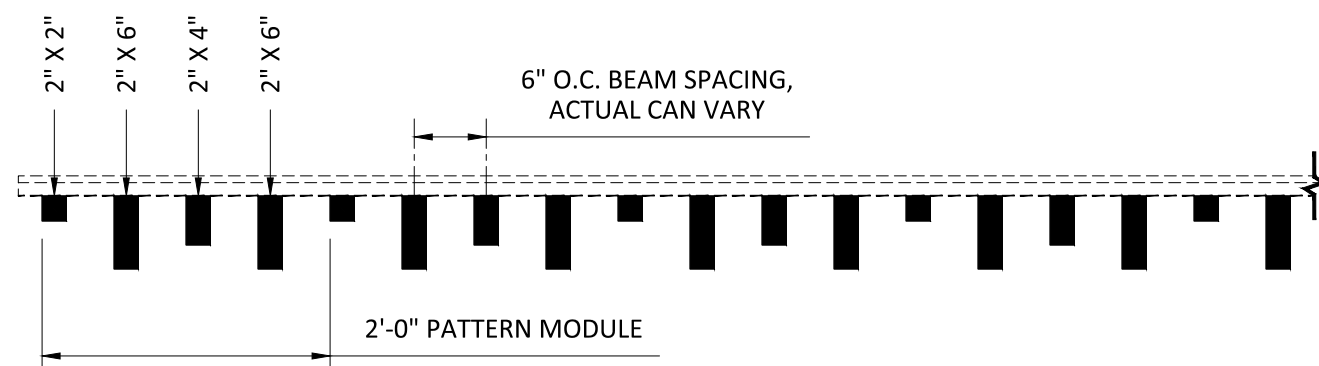
BARCODE PATTERN



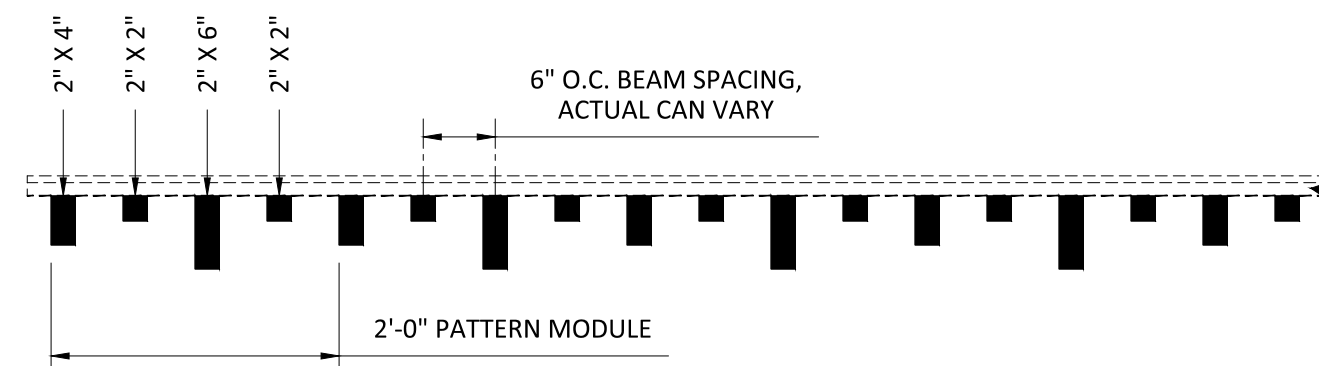
STEP PATTERN



STAGGER PATTERN



CHOPPY PATTERN



SCATTER PATTERN