

INTERIOR INSTALLATION

*SEE SHEET A1.1 FOR AVAILABLE BEAM SIZES



5015 Oakbrook Parkway, Suite 100
Norcross, GA 30093
T 800.366.4327
F 770.806.0214
HDarchitectural.com

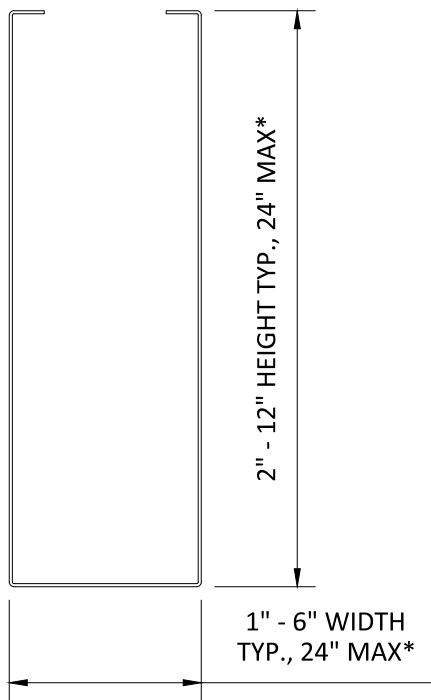
All rights reserved. This drawing is the property of Hunter Douglas. It may not be copied or multiplied, neither wholly nor partly. It may not be submitted for perusal to third parties.

SPECIFICATIONS (unless noted otherwise)

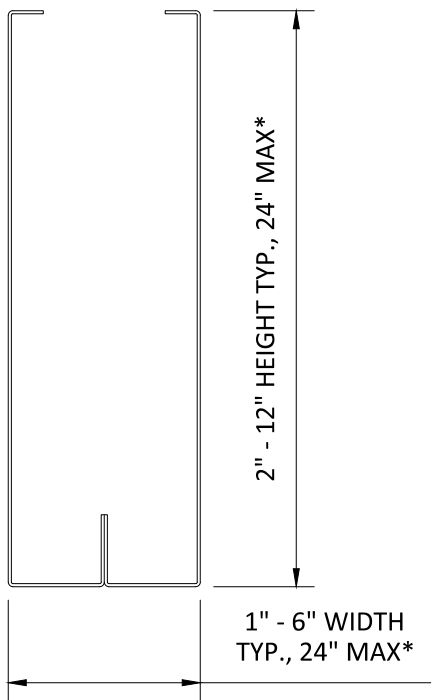
MATERIAL: .025" | .032" | .040" ALUMINUM
FINISH: PAINT | POWDER COAT | DECORATED WOOD FINISH | WOOD VENEER
PERFORATION: NON-PERFORATED | #103 | #106 | #111 | #119 | #150

OVERALL ISOMETRIC VIEW

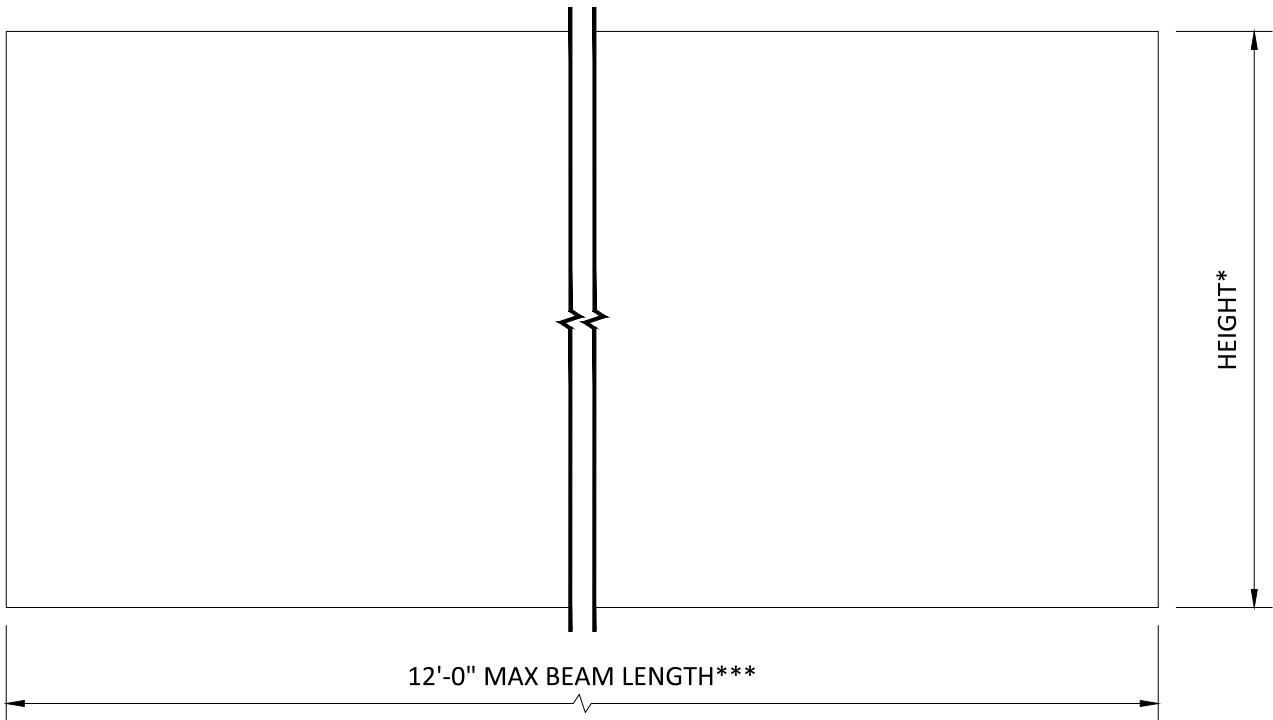
PROJECT: TAVOLA BEAM CASSETTES PRODUCT SPECIFICATIONS
DRAWING NUMBER: TAVOCASS-A1.0
SCALE: AS SHOWN
DRAWN BY: HDA ENGINEERING
DATE: 8/15/16



1-PIECE BEAM



2-PIECE BEAM**



BEAM END & SIDE VIEW
SCALE: NOT TO SCALE

BEAM SIZES

BEAM SIZES ARE DIMENSIONED WIDTH X HEIGHT

*PROFILES ARE AVAILABLE IN 1/2" INCREMENTS, CONTACT HUNTER DOUGLAS FOR OTHER SIZES

**CERTAIN PROFILES MAY BE 2-PIECE FACTORY-ASSEMBLED BEAMS, CONTACT HUNTER DOUGLAS

***MAX LENGTHS MAY BE PROFILE-SPECIFIC, CONTACT HUNTER DOUGLAS

BEAM LENGTHS AVAILABLE IN ±1/8" INCREMENTS, MINIMUM QUANTITIES MAY APPLY

BEAM MATERIAL

.025", .032", .040" ALUMINUM

BEAM FINISHES

PAINTED & POWDER COATED

DECORATED WOOD FINISH (POWDER COATED)

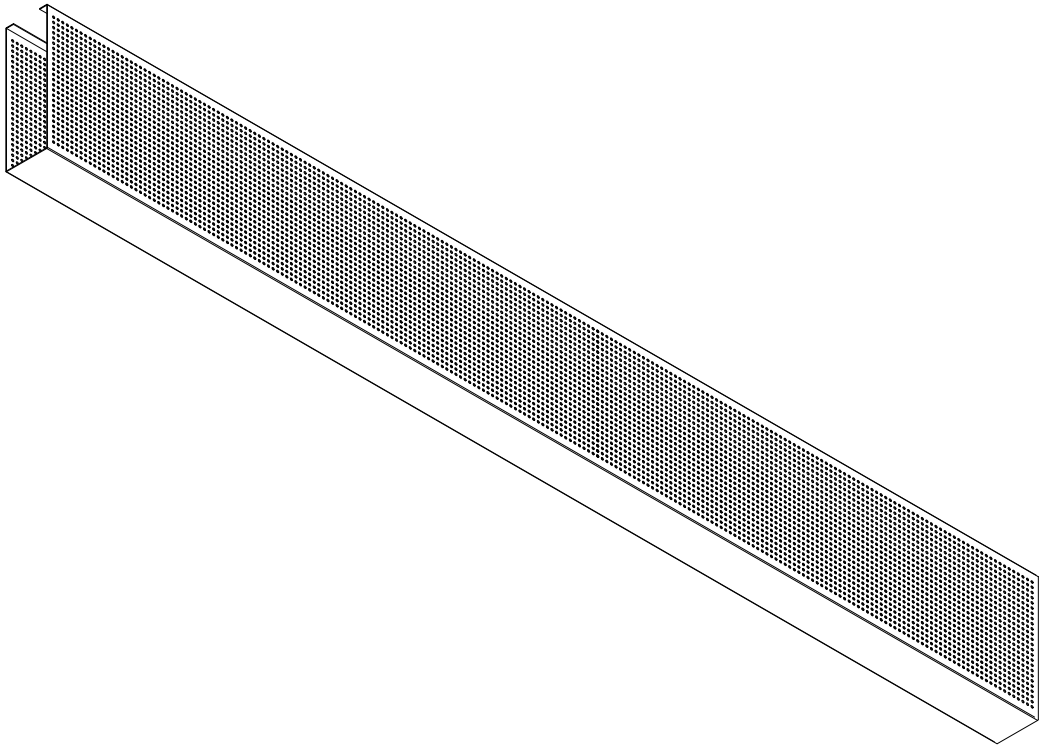
WOOD VENEER (NON-PERFORATED ONLY)

PERFORATIONS

| PERFORATION | % OPEN |
|-------------|--------|
| 103 | 20.0% |
| 106 | 16.0% |
| 111 | 4.0% |
| 119 | 8.0% |
| 150 | 4.0% |

STANDARD PERFORATION BORDERS ARE 1/4" NOM.

PERFORATIONS ARE ONLY ON THE SIDES OF THE BEAM



BEAM SIZES, MATERIALS, FINISHES, & PERFORATIONS
SCALE: NOT TO SCALE



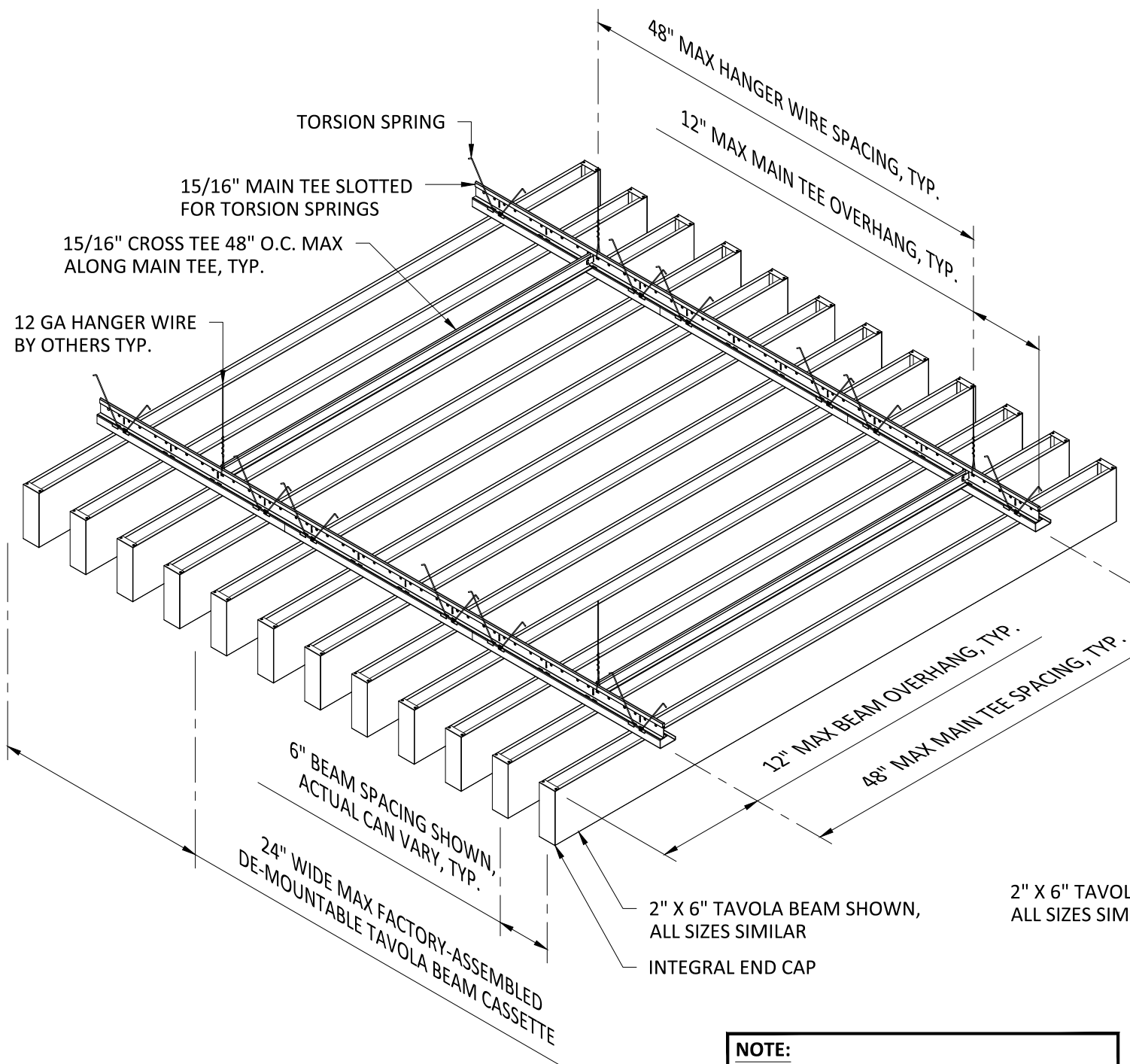
5015 Oakbrook Parkway, Suite 100
Norcross, GA 30093
T 800.366.4327
F 770.806.0214
HDarchitectural.com

All rights reserved. This drawing is the property of Hunter Douglas. It may not be copied or multiplied, neither wholly nor partly. It may not be submitted for perusal to third parties.

SPECIFICATIONS
(unless noted otherwise)

MATERIAL: .025" | .032" | .040" ALUMINUM
FINISH: PAINT | POWDER COAT | DECORATED WOOD FINISH | WOOD VENEER
PERFORATION: NON-PERFORATED | #103 | #106 | #111 | #119 | #150

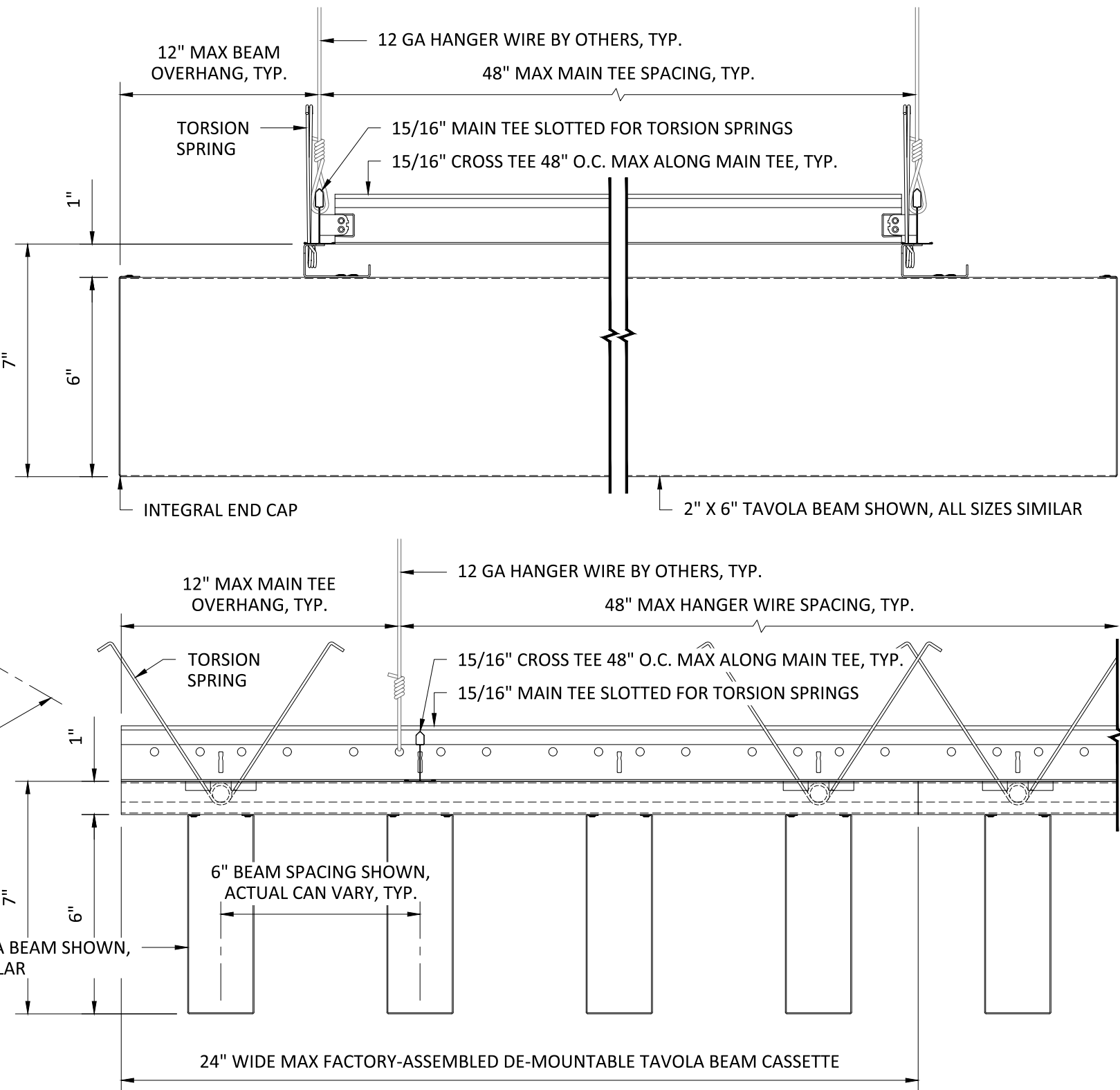
BEAM SPECIFICATIONS
PROJECT: TAVOLA BEAM CASSETTES PRODUCT SPECIFICATIONS
DRAWING NUMBER: TAVOCASS-A1.1
SCALE: AS SHOWN
DRAWN BY: HDA ENGINEERING
DATE: 8/15/16



INTERIOR INSTALLATION

NOTE:

ATTACHMENT TO STRUCTURE
DESIGNED AND PROVIDED BY
OTHERS, NOT BY HUNTER DOUGLAS



TYPICAL SECTIONS

SCALE: 3" = 1'-0"

HunterDouglas
Architectural

5015 Oakbrook Parkway, Suite 100
Norcross, GA 30093
T 800.366.4327
F 770.806.0214
HDarchitectural.com

All rights reserved. This drawing is the property of Hunter Douglas. It may not be copied or multiplied, neither wholly nor partly. It may not be submitted for perusal to third parties.

SPECIFICATIONS

(unless noted otherwise)

MATERIAL: .025" | .032" | .040" ALUMINUM

FINISH: PAINT | POWDER COAT | DECORATED WOOD FINISH | WOOD VENEER

PERFORATION: NON-PERFORATED | #103 | #106 | #111 | #119 | #150

SUSPENSION SPECIFICATIONS

PROJECT: TAVOLA BEAM CASSETTES PRODUCT SPECIFICATIONS

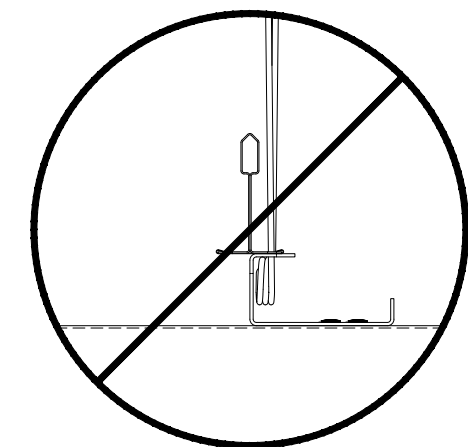
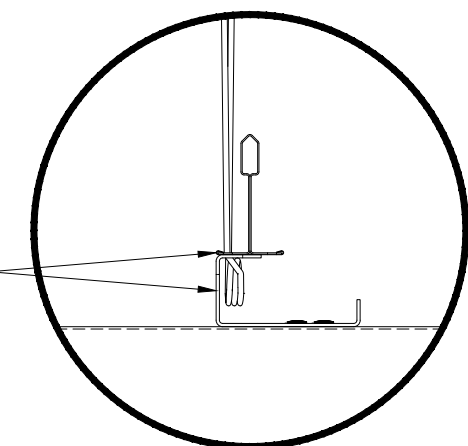
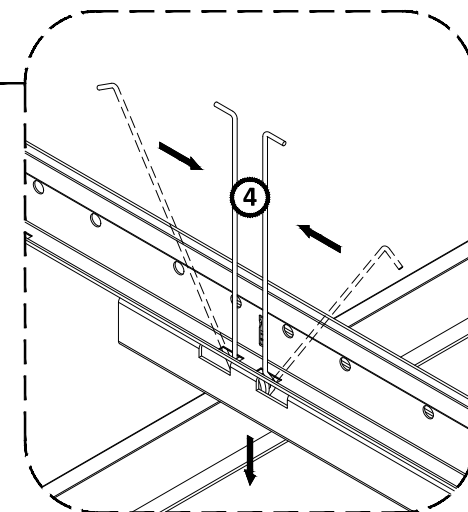
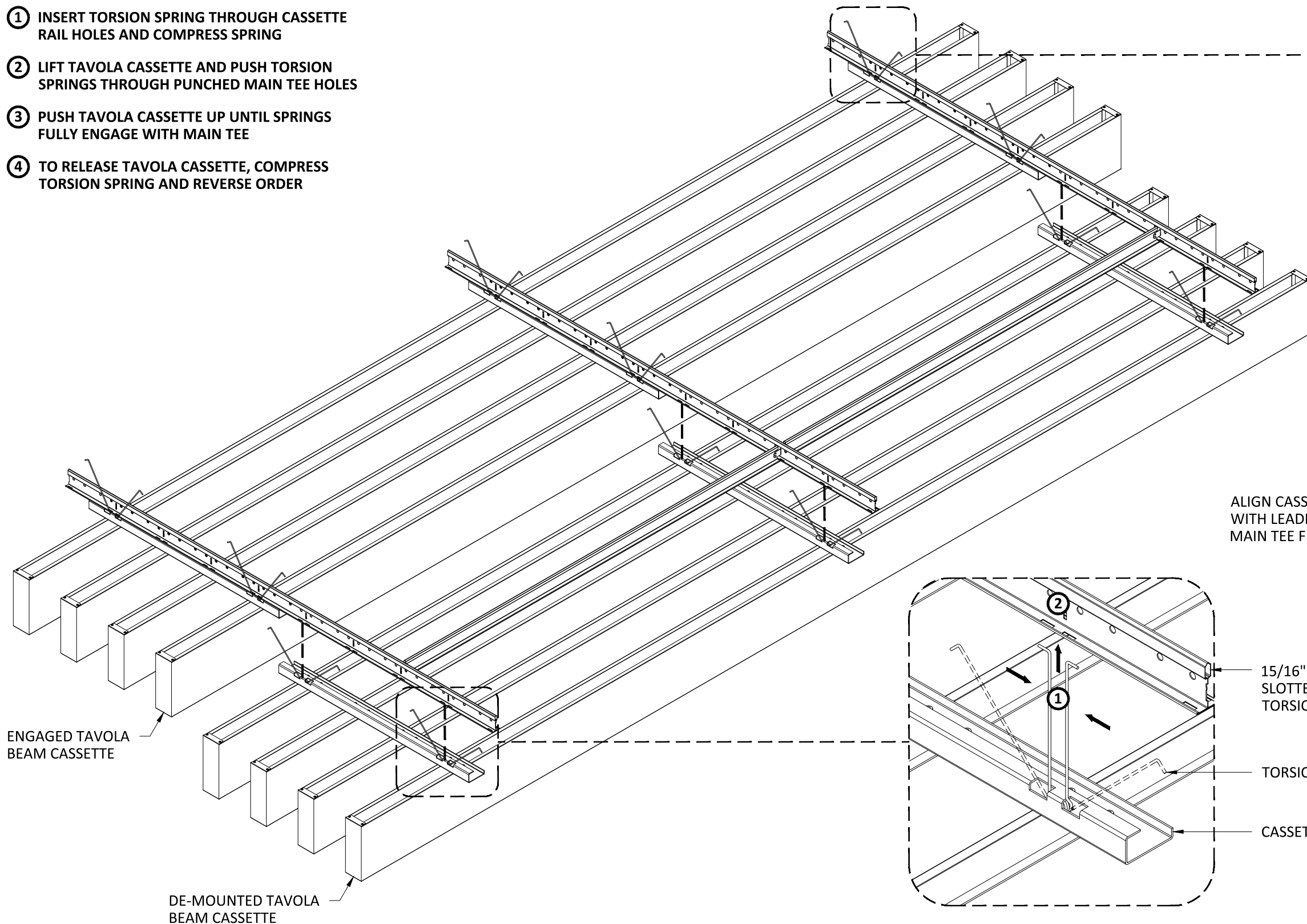
DRAWING NUMBER: TAVOCASS-A1.2

SCALE: AS SHOWN

DRAWN BY: HDA ENGINEERING

DATE: 8/15/16

- ① INSERT TORSION SPRING THROUGH CASSETTE RAIL HOLES AND COMPRESS SPRING
- ② LIFT TAVOLA CASSETTE AND PUSH TORSION SPRINGS THROUGH PUNCHED MAIN TEE HOLES
- ③ PUSH TAVOLA CASSETTE UP UNTIL SPRINGS FULLY ENGAGE WITH MAIN TEE
- ④ TO RELEASE TAVOLA CASSETTE, COMPRESS TORSION SPRING AND REVERSE ORDER



ALIGN CASSETTE RAIL SIDE WITH LEADING EDGE OF MAIN TEE FLANGE

15/16" MAIN TEE SLOTTED FOR TORSION SPRINGS

TORSION SPRING

CASSETTE RAIL

*VERTICAL SUPPORT OMITTED FOR CLARITY
**2" X 6" BEAM SHOWN 6" O.C., CONTACT HUNTER DOUGLAS FOR ADDITIONAL BEAM & SPACING OPTIONS

HunterDouglas
Architectural

5015 Oakbrook Parkway, Suite 100
Norcross, GA 30093
T 800.366.4327
F 770.806.0214
HDarchitectural.com

All rights reserved. This drawing is the property of Hunter Douglas. It may not be copied or multiplied, neither wholly nor partly. It may not be submitted for perusal to third parties.

SPECIFICATIONS

(unless noted otherwise)

MATERIAL: .025" | .032" | .040" ALUMINUM
FINISH: PAINT | POWDER COAT | DECORATED WOOD FINISH | WOOD VENEER
PERFORATION: NON-PERFORATED | #103 | #106 | #111 | #119 | #150

CASSETTE INSTALLATION

PROJECT: TAVOLA BEAM CASSETTES PRODUCT SPECIFICATIONS
DRAWING NUMBER: TAVOCASS-A1.3
SCALE: AS SHOWN
DRAWN BY: HDA ENGINEERING
DATE: 8/15/16