

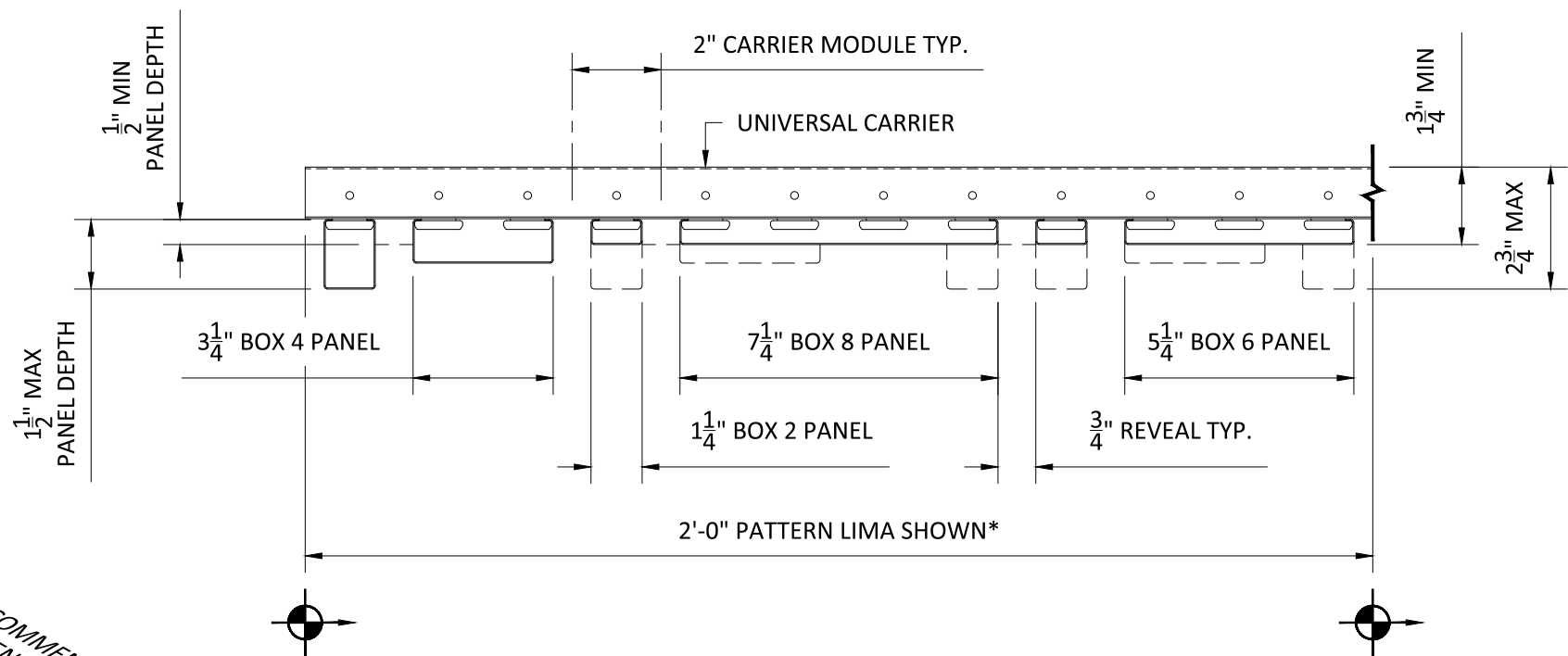
GAMMALUX LIGHT LEVELS
LED FIXTURE
SEE DETAIL A1.4

12" MAX CARRIER OVERHANG, TYP.
48" MAX HANGER WIRE SPACING, TYP.

12" MAX PANEL OVERHANG, TYP.
48" MAX CARRIER SPACING, 24" RECOMMENDED
TO ACCOMMODATE DIFFERENT PANEL LENGTHS, TYP.

PANEL END CAP
SEE DETAIL A1.3

BOX PANEL SPECIFICATIONS
SEE DETAIL A1.1



TYPICAL SYSTEM SECTION

SCALE: 3" = 1'-0"

12 GA HANGER WIRE, BY OTHERS,
NOT BY HUNTER DOUGLAS
SEE DETAIL A1.2

SUSPENSION SPECIFICATIONS
SEE DETAIL A1.2

*SEE SHEETS A1.5 - A1.9 FOR PATTERNS

NOTE:
MULTI-BOX NETWORKS CEILINGS MAY
COMPRISE OF ANY BOX PANEL IN ANY
PATTERN DESIRED.

NOTE:
PATTERN AND PATTERN START POINT MUST
BE PROVIDED.

NOTE:
DUE TO VARYING PANEL DEPTHS, TRIMS ARE
NOT RECOMMENDED AT PERIMETERS.
ALWAYS TERMINATE CEILING ON FACTORY
PANELS AND END CAPS.

INTERIOR INSTALLATION

HunterDouglas
Architectural

5015 Oakbrook Parkway, Suite 100
Norcross, GA 30093
T 800.366.4327
F 770.806.0214
HDarchitectural.com

*All rights reserved. This
drawing is the property
of Hunter Douglas. It
may not be copied or
multiplied, neither
wholly nor partly. It may
not be submitted for
perusal to third parties.*

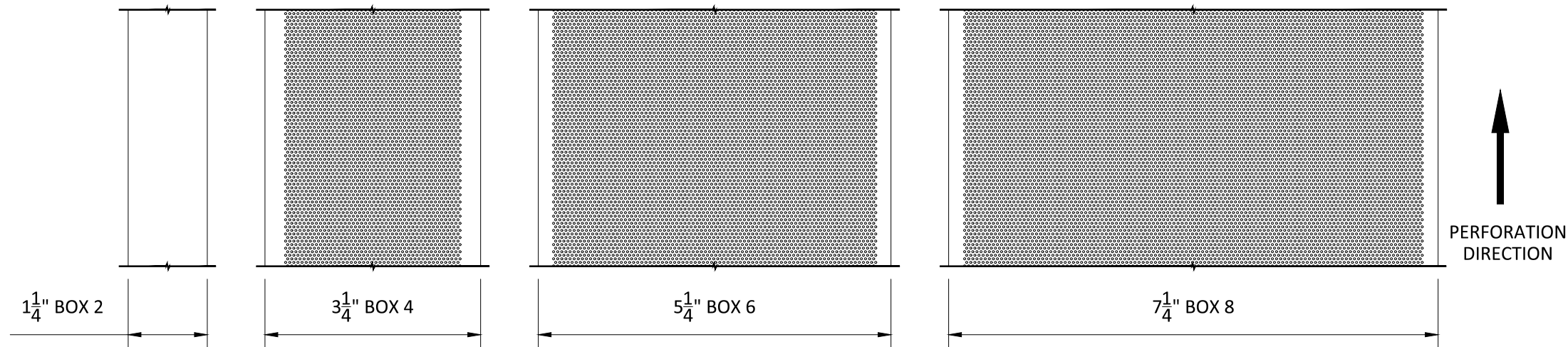
SPECIFICATIONS

(unless noted otherwise)

MATERIAL: SEE DETAIL A1.1 THIS SET FOR MULTI-BOX PANELS | .040" ALUMINUM
UNIVERSAL CARRIER
FINISH: PAINT | POWDER COAT | DECORATED WOOD FINISH | WOOD VENEER |
LUXACOTE
PERFORATION: SEE DETAIL A1.1 THIS SET

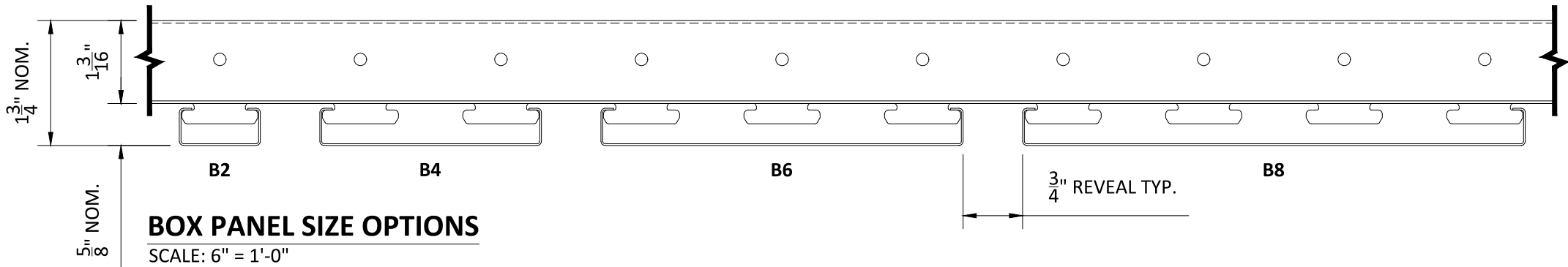
OVERALL ISOMETRIC VIEW

PROJECT: MULTI-BOX NETWORKS PRODUCT SPECIFICATIONS
DRAWING NUMBER: MULTI-BOX NET-A1.0
SCALE: AS SHOWN
DRAWN BY: HDA ENGINEERING
DATE: 8/15/16



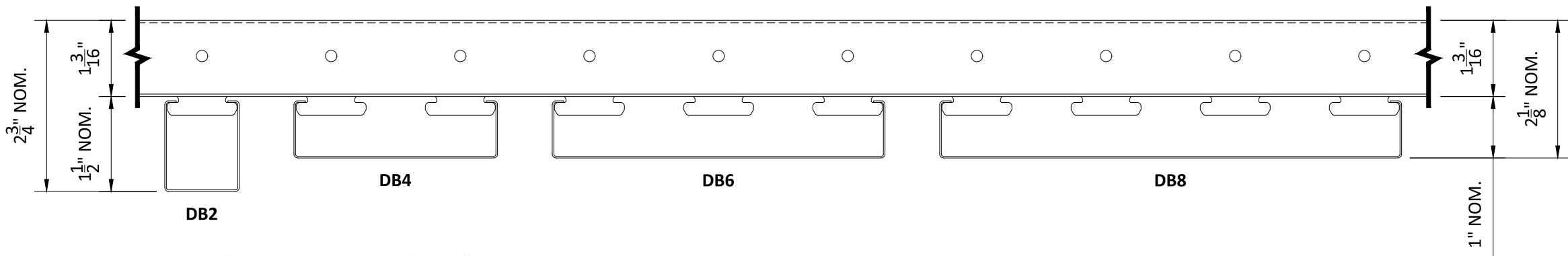
PERFORATION #160 PATTERN
SCALE: 6" = 1'-0"

TABLE 1 - MATERIAL THICKNESS OPTIONS				
PANEL SIZE	.020"	.025"	.032"	.040"
BOX 2	X	X		
DEEP BOX 2	X	X		
BOX 4	X	X	X	
DEEP BOX 4	X	X	X	X
BOX 6	X	X	X	X
DEEP BOX 6	X	X	X	X
BOX 8			X	X
DEEP BOX 8			X	X



BOX PANEL SIZE OPTIONS
SCALE: 6" = 1'-0"

TABLE 2 - PERFORATION OPTIONS	
PANEL SIZE	PERFORATION
BOX 2	NONE AVAILABLE
DEEP BOX 2	NONE AVAILABLE
BOX 4	#160 (23% OPEN)
DEEP BOX 4	NONE AVAILABLE
BOX 6	#160 (23% OPEN)
DEEP BOX 6	NONE AVAILABLE
BOX 8	#160 (23% OPEN)
DEEP BOX 8	NONE AVAILABLE



DEEP BOX PANEL SIZE OPTIONS
SCALE: 6" = 1'-0"

****IMPORTANT NOTE (A)****
MULTI-BOX CEILINGS MAY COMPRISE ANY BOX AND DEEP BOX PANELS IN ANY ORDER/PATTERN DESIRED.

****IMPORTANT NOTE (B)****
PLEASE SPECIFY PATTERN REPEAT AND PATTERN START POINT IN EACH AREA DESIRED.



5015 Oakbrook Parkway, Suite 100
Norcross, GA 30093
T 800.366.4327
F 770.806.0214
HDarchitectural.com

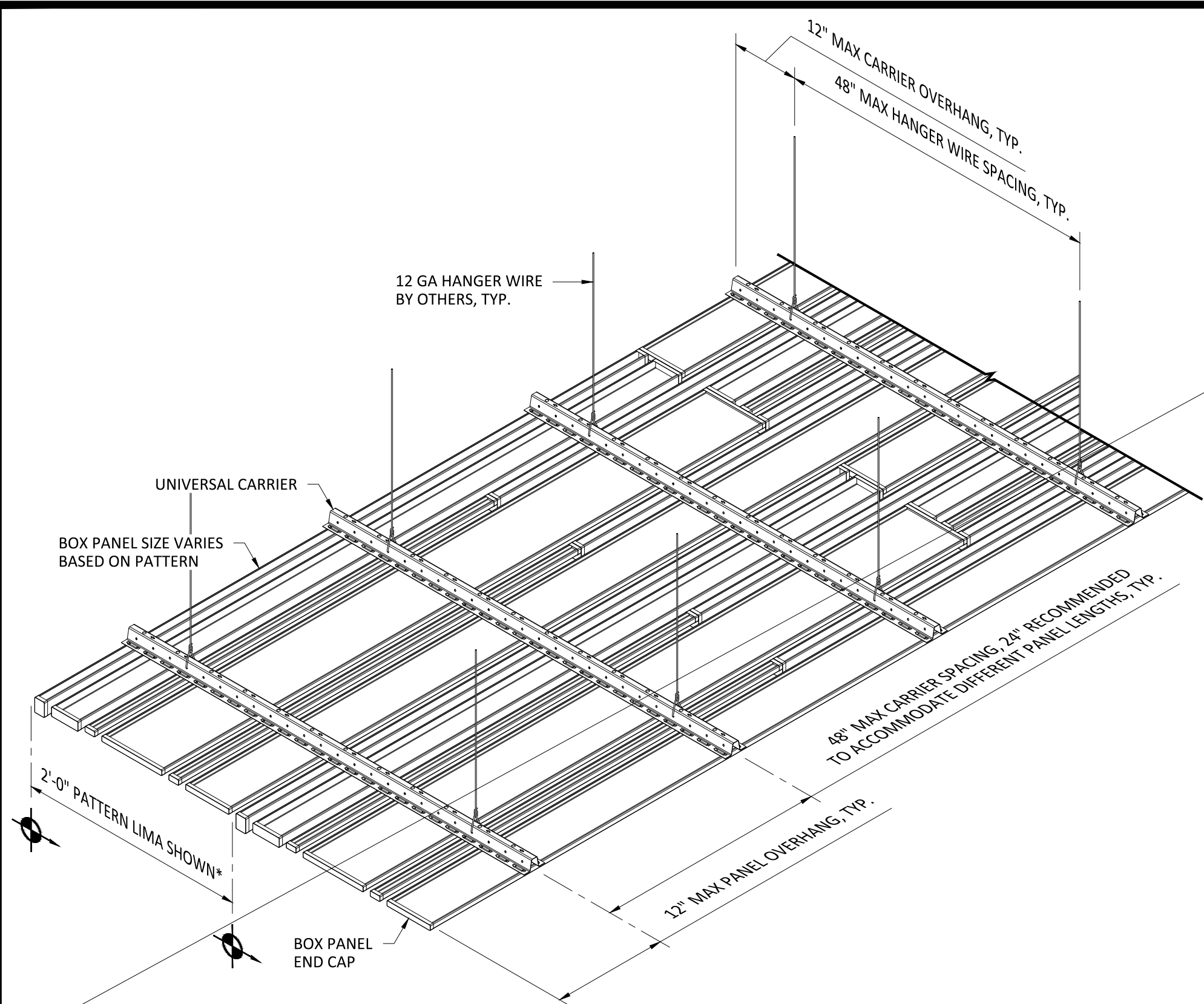
All rights reserved. This drawing is the property of Hunter Douglas. It may not be copied or multiplied, neither wholly nor partly. It may not be submitted for perusal to third parties.

SPECIFICATIONS
(unless noted otherwise)

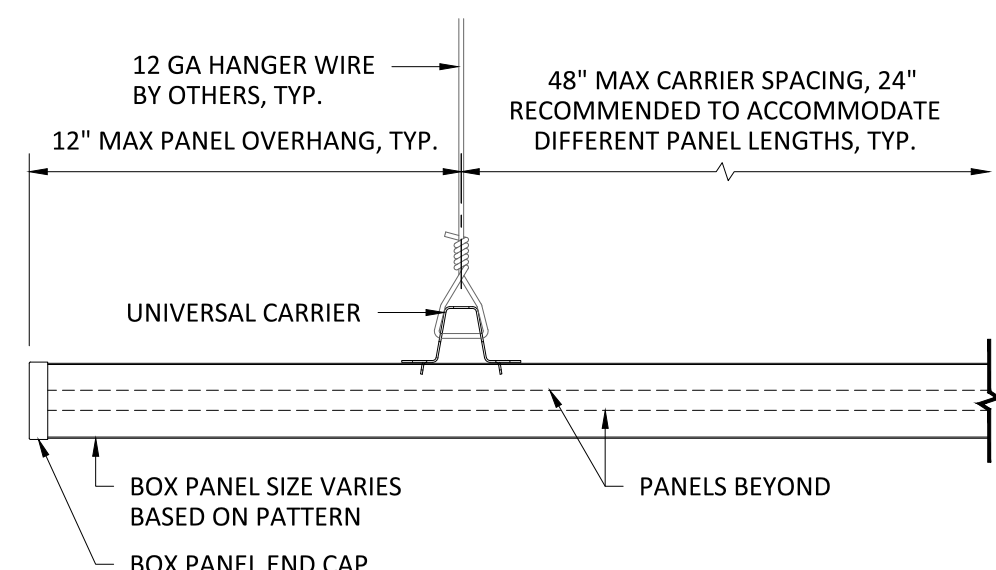
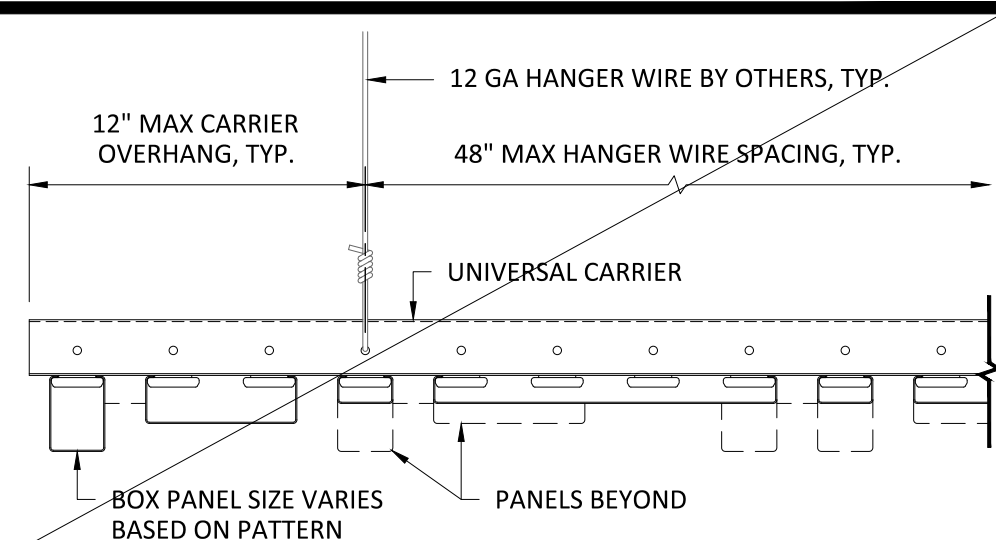
MATERIAL: SEE TABLE 1 ABOVE | .040" ALUMINUM UNIVERSAL CARRIER
FINISH: PAINT | POWDER COAT | DECORATED WOOD FINISH | WOOD VENEER | LUXACOTE
PERFORATION: SEE TABLE 2 ABOVE

PANEL SPECIFICATIONS

PROJECT: MULTI-BOX NETWORKS PRODUCT SPECIFICATIONS
DRAWING NUMBER: MULTI-BOX NET-A1.1
SCALE: AS SHOWN
DRAWN BY: HDA ENGINEERING
DATE: 8/15/16



INTERIOR INSTALLATION



TYPICAL SECTIONS
SCALE: 3" = 1'-0"

*SEE SHEETS A1.5 - A1.9 FOR PATTERNS

NOTE:
ATTACHMENT TO STRUCTURE
DESIGNED AND PROVIDED BY
OTHERS, NOT BY HUNTER DOUGLAS



5015 Oakbrook Parkway, Suite 100
Norcross, GA 30093
T 800.366.4327
F 770.806.0214
HDarchitectural.com

All rights reserved. This drawing is the property of Hunter Douglas. It may not be copied or multiplied, neither wholly nor partly. It may not be submitted for perusal to third parties.

SPECIFICATIONS

(unless noted otherwise)

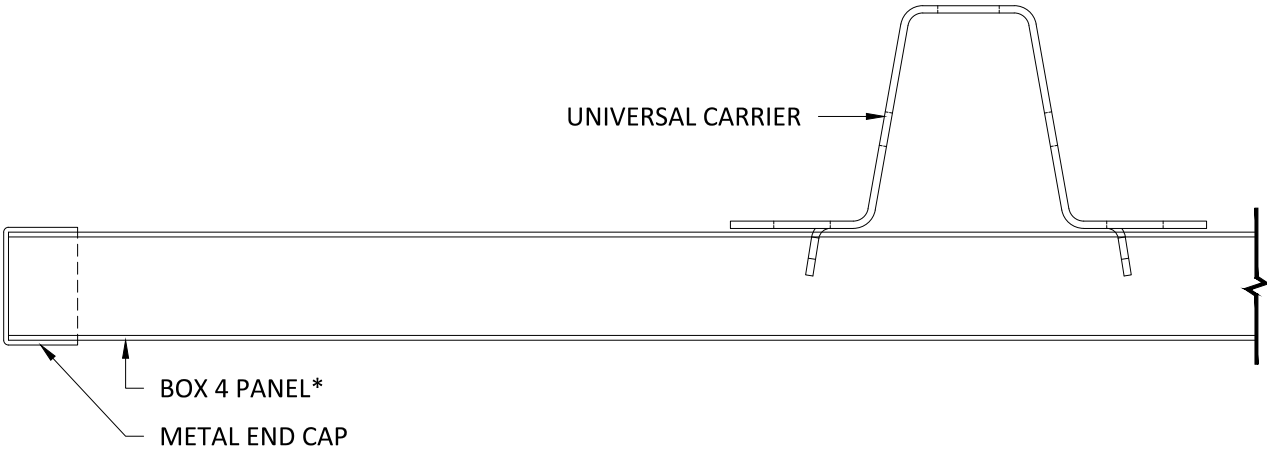
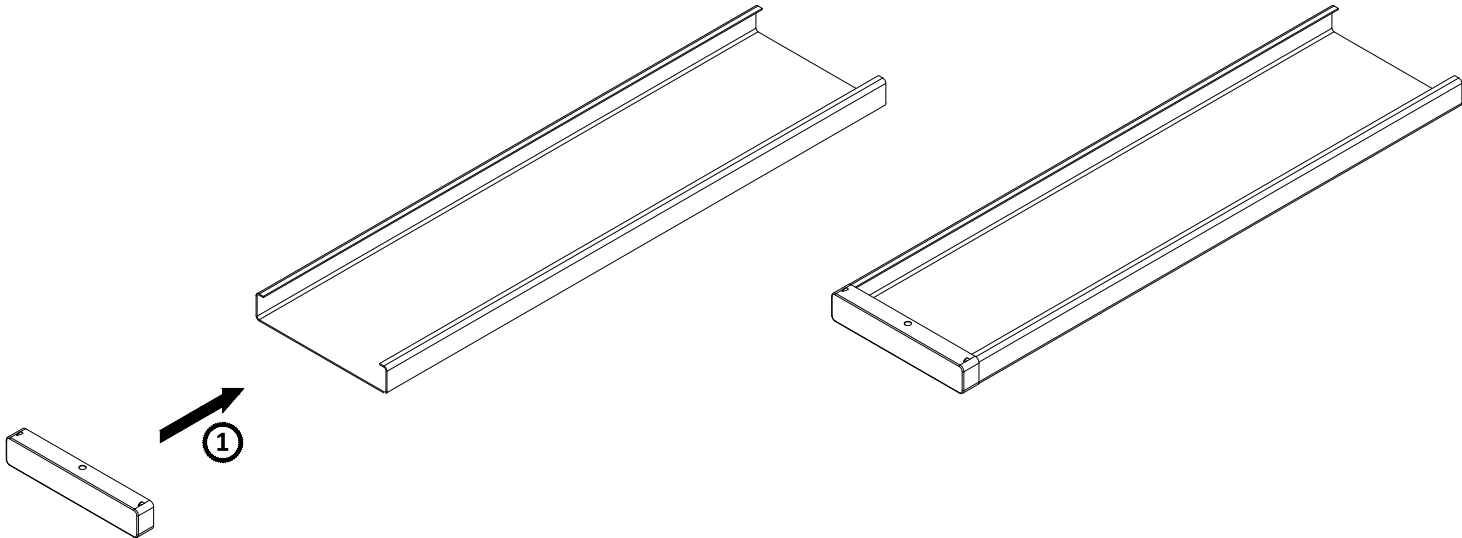
MATERIAL: SEE DETAIL A1.1 THIS SET FOR MULTI-BOX PANELS | .040" ALUMINUM
UNIVERSAL CARRIER
FINISH: PAINT | POWDER COAT | DECORATED WOOD FINISH | WOOD VENEER | LUXACOTE
PERFORATION: SEE DETAIL A1.1 THIS SET

SUSPENSION SPECIFICATIONS

PROJECT: MULTI-BOX NETWORKS PRODUCT SPECIFICATIONS
DRAWING NUMBER: MULTI-BOX NET-A1.2
SCALE: AS SHOWN
DRAWN BY: HDA ENGINEERING
DATE: 8/15/16

METAL END CAP - PAINTED, POWDER COATED, & DECORATED FINISHES

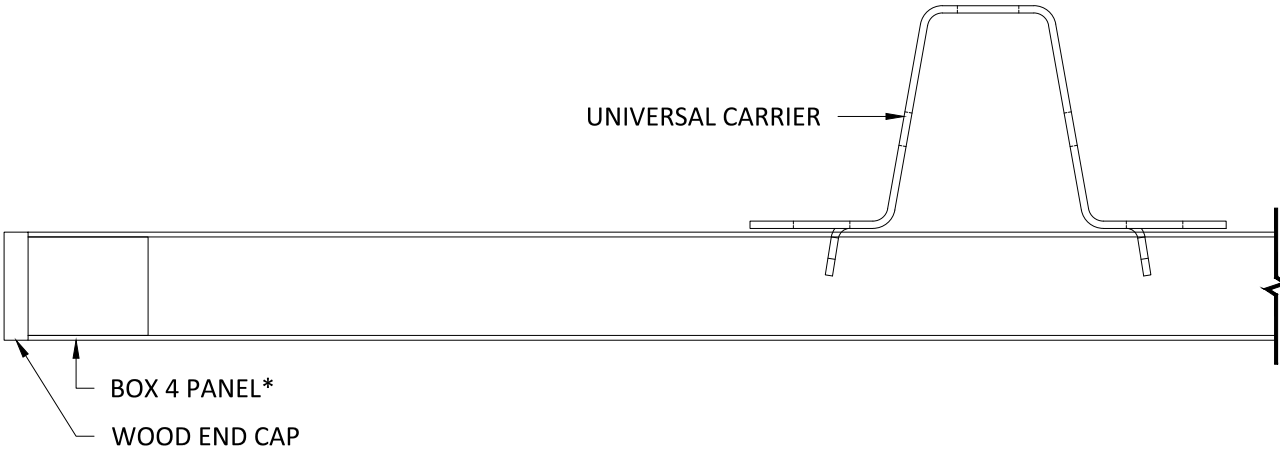
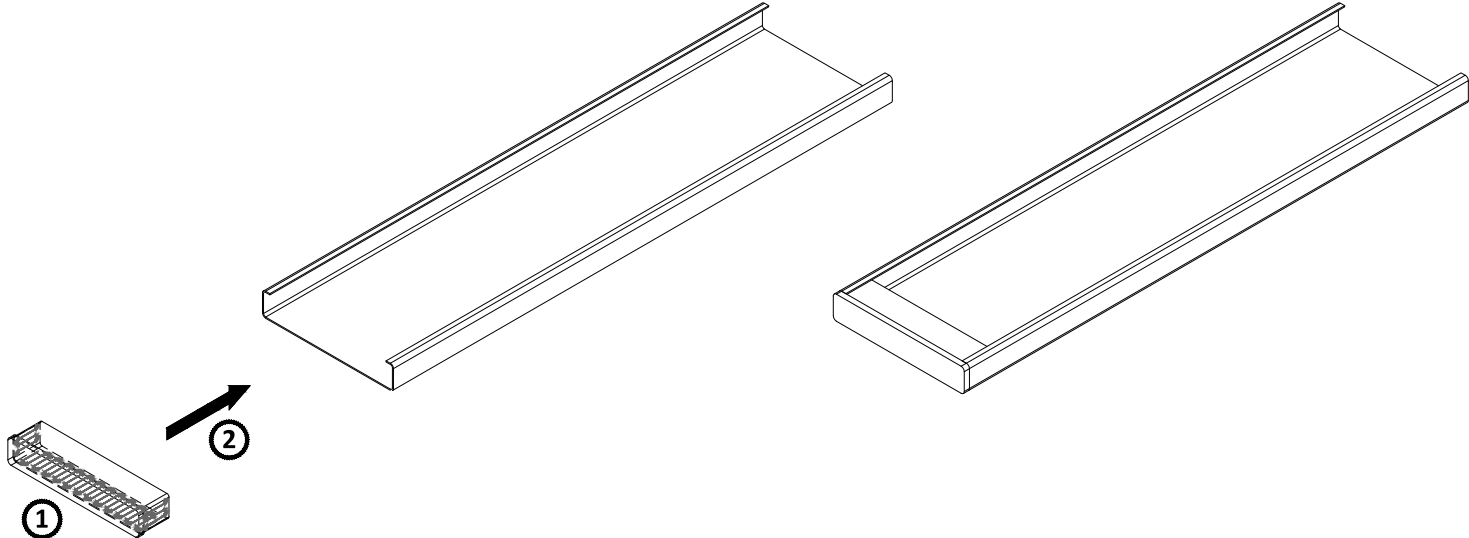
- ① INSERT END CAP ONTO PANEL* AND ENSURE SHEAR TABS ARE ORIENTED ON TOP OF PANEL



TYPICAL SECTION
SCALE: FULL

WOOD END CAP - VENEER FINISH

- ① APPLY CONSTRUCTION ADHESIVE TO EDGES OF END CAP AS SHOWN
- ② INSERT END CAP INTO PANEL* AND REMOVE ANY VISIBLE ADHESIVE



TYPICAL SECTION
SCALE: FULL

*BOX 4 PANEL SHOWN, ALL SIZES SIMILAR

SPECIFICATIONS

(unless noted otherwise)

MATERIAL: SEE DETAIL A1.1 THIS SET FOR MULTI-BOX PANELS | .040" ALUMINUM
UNIVERSAL CARRIER
FINISH: PAINT | POWDER COAT | DECORATED WOOD FINISH | WOOD VENEER | LUXACOTE
PERFORATION: SEE DETAIL A1.1 THIS SET

END CAP INSTALLATION

PROJECT: MULTI-BOX NETWORKS PRODUCT SPECIFICATIONS
DRAWING NUMBER: MULTI-BOX NET-A1.3
SCALE: AS SHOWN
DRAWN BY: HDA ENGINEERING
DATE: 8/15/16

GAMMALUX LIGHT LEVELS FIXTURE INDEPENDENTLY SUPPORTED IN ACCORDANCE WITH LOCAL BUILDING CODES & LIGHT FIXTURE MANUFACTURER'S INSTRUCTIONS, TYP.

12 GA HANGER WIRE BY OTHERS, TYP.

FIELD CUT CARRIER & ADD HANGER WIRE WITHIN 12" FROM END

GAMMALUX LIGHT LEVELS FIXTURE

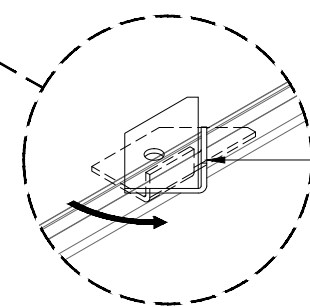
FIXTURE MOUNTING BRACKET CAN EXTEND PAST FIXTURE TO ALIGN WITH CONTINUOUS CARRIERS

CONTINUOUS CARRIER

SLIDE FIXTURE MOUNTING BRACKET TO CARRIER FOR FIXTURE ALIGNMENT

FIELD CUT CARRIER & ADD HANGER WIRE WITHIN 12" FROM END

BOX PANEL SIZE VARIES BASED ON PATTERN



TWIST PANEL TAB 45° TO SECURE PANELS ADJACENT TO FIXTURE

GAMMALUX LIGHT LEVELS FIXTURE INDEPENDENTLY SUPPORTED IN ACCORDANCE WITH LOCAL BUILDING CODES & LIGHT FIXTURE MANUFACTURER'S INSTRUCTIONS, TYP.

12 GA HANGER WIRE 12" MAX FROM CARRIER ENDS, BY OTHERS, TYP.

GAMMALUX LIGHT LEVELS FIXTURE

FIXTURE MOUNTING BRACKET

FIELD CUT CARRIER

PANEL TABS
FIXTURE LENS

BOX PANEL SIZE VARIES BASED ON PATTERN

SECTION 'A'
SCALE: 3" = 1'-0"

NOTE:
LENS HEIGHT CAN BE SPECIFIED TO BE RECESSED AS SHOWN OR AT ANY BOX PANEL LEVEL DEPTH.

RECESSED LIGHT LENS IS STANDARD AND WILL BE SUPPLIED UNLESS NOTED OTHERWISE.

FOR NON-STANDARD LENS HEIGHTS, CONTACT HUNTER DOUGLAS.

4'-0" NOM. FIXTURE LENGTH

SLIDE FIXTURE MOUNTING BRACKET TO CARRIER FOR FIXTURE ALIGNMENT

GAMMALUX LIGHT LEVELS FIXTURE

12 GA HANGER WIRE BEYOND, BY OTHERS, TYP.

FIXTURE MOUNTING BRACKET CAN EXTEND PAST FIXTURE TO ALIGN WITH CONTINUOUS CARRIERS

FIELD CUT CARRIER & ADD HANGER WIRE WITHIN 12" FROM END

BOX PANEL SIZE VARIES BASED ON PATTERN

FIELD CUT CARRIER & ADD HANGER WIRE WITHIN 12" FROM END

PANEL TAB

CONTINUOUS CARRIER

SECTION 'B'
SCALE: 3" = 1'-0"



5015 Oakbrook Parkway, Suite 100
Norcross, GA 30093
T 800.366.4327
F 770.806.0214
HDarchitectural.com

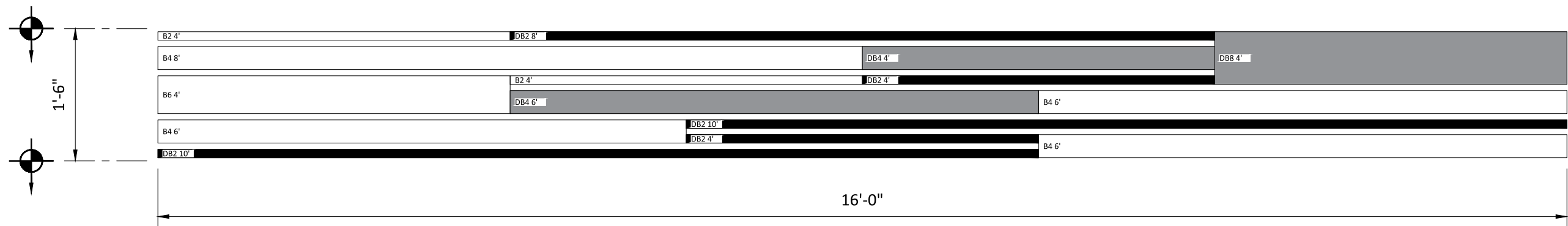
All rights reserved. This drawing is the property of Hunter Douglas. It may not be copied or multiplied, neither wholly nor partly. It may not be submitted for perusal to third parties.

SPECIFICATIONS
(unless noted otherwise)

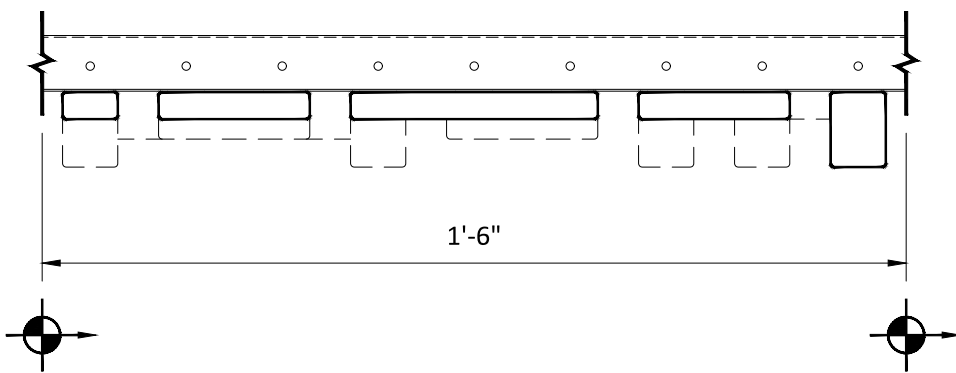
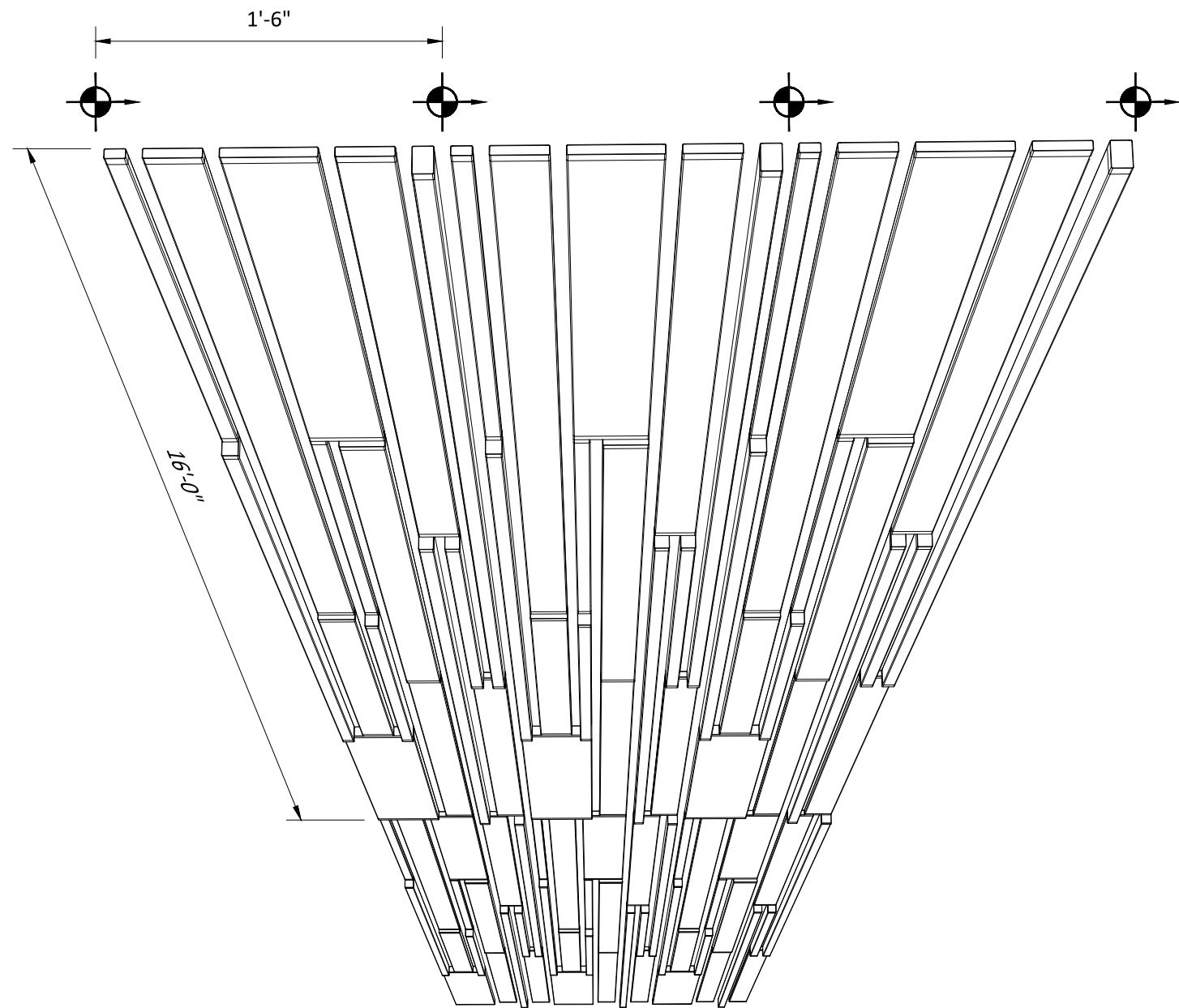
MATERIAL: SEE DETAIL A1.1 THIS SET FOR MULTI-BOX PANELS | .040" ALUMINUM
UNIVERSAL CARRIER
FINISH: PAINT | POWDER COAT | DECORATED WOOD FINISH | WOOD VENEER | LUXACOTE
PERFORATION: SEE DETAIL A1.1 THIS SET

GAMMALUX LIGHT LEVELS FIXTURE

PROJECT: MULTI-BOX NETWORKS PRODUCT SPECIFICATIONS
DRAWING NUMBER: MULTI-BOX NET-A1.4
SCALE: AS SHOWN
DRAWN BY: HDA ENGINEERING
DATE: 8/15/16



KILO RCP
SCALE: 3/4" = 1'-0"



KILO ELEVATION
SCALE: 3" = 1'-0"

SPECIFICATIONS

(unless noted otherwise)

MATERIAL: SEE DETAIL A1.1 THIS SET FOR MULTI-BOX PANELS | .040" ALUMINUM

UNIVERSAL CARRIER

FINISH: PAINT | POWDER COAT | DECORATED WOOD FINISH | WOOD VENEER |

LUXACOTE

PERFORATION: SEE DETAIL A1.1 THIS SET

MULTI-BOX NETWORKS - PATTERN KILO

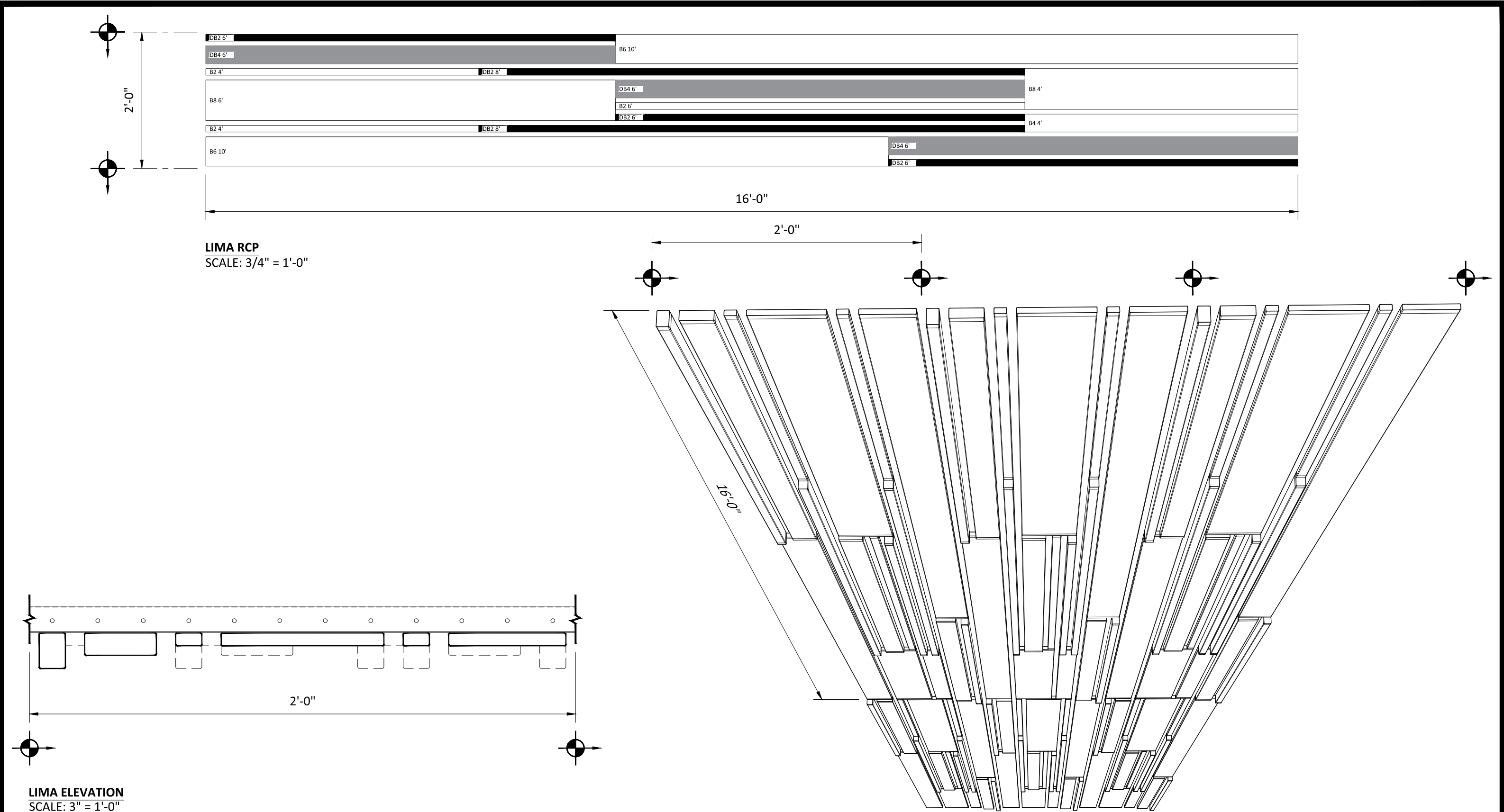
PROJECT: MULTI-BOX NETWORKS PRODUCT SPECIFICATIONS

DRAWING NUMBER: MULTI-BOX NET-A1.5

SCALE: AS SHOWN

DRAWN BY: HDA ENGINEERING

DATE: 8/15/16



SPECIFICATIONS

(unless noted otherwise)

MATERIAL: SEE DETAIL A1.1 THIS SET FOR MULTI-BOX PANELS | .040" ALUMINUM

UNIVERSAL CARRIER

FINISH: PAINT | POWDER COAT | DECORATED WOOD FINISH | WOOD VENEER |

LUXACOTE

PERFORATION: SEE DETAIL A1.1 THIS SET

MULTI-BOX NETWORKS - PATTERN LIMA

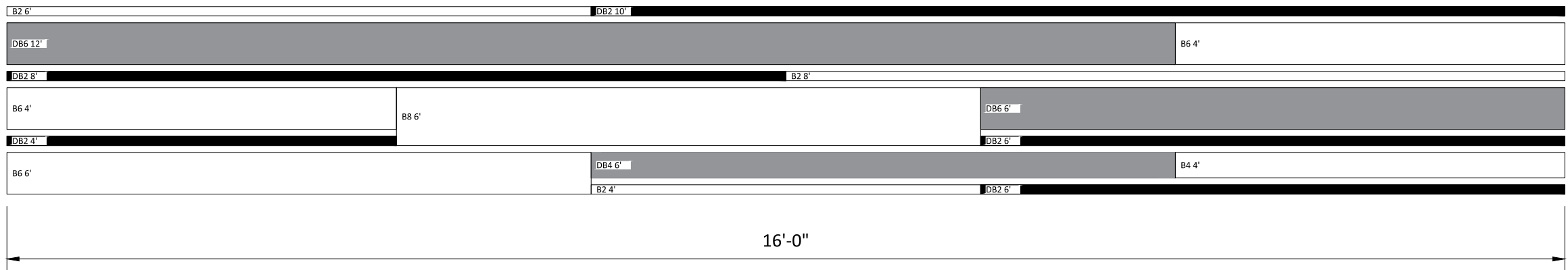
PROJECT: MULTI-BOX NETWORKS PRODUCT SPECIFICATIONS

DRAWING NUMBER: MULTI-BOX NET-A1.6

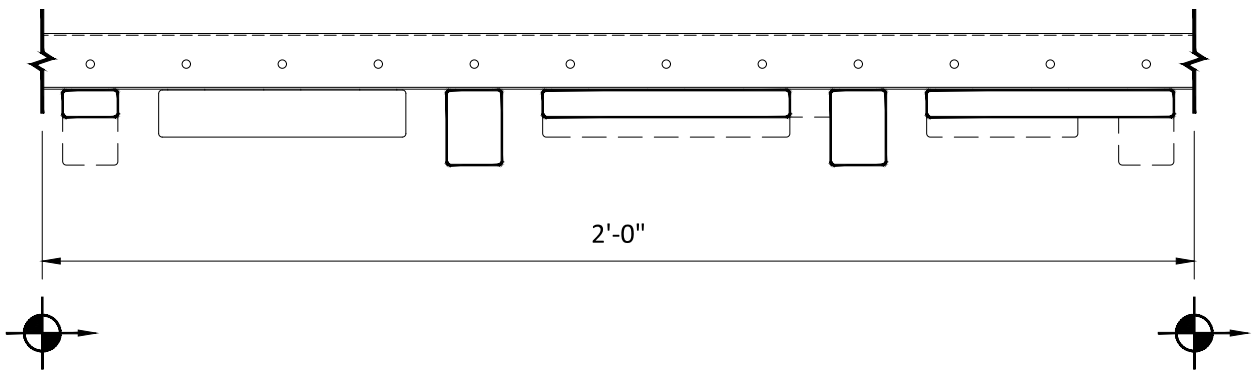
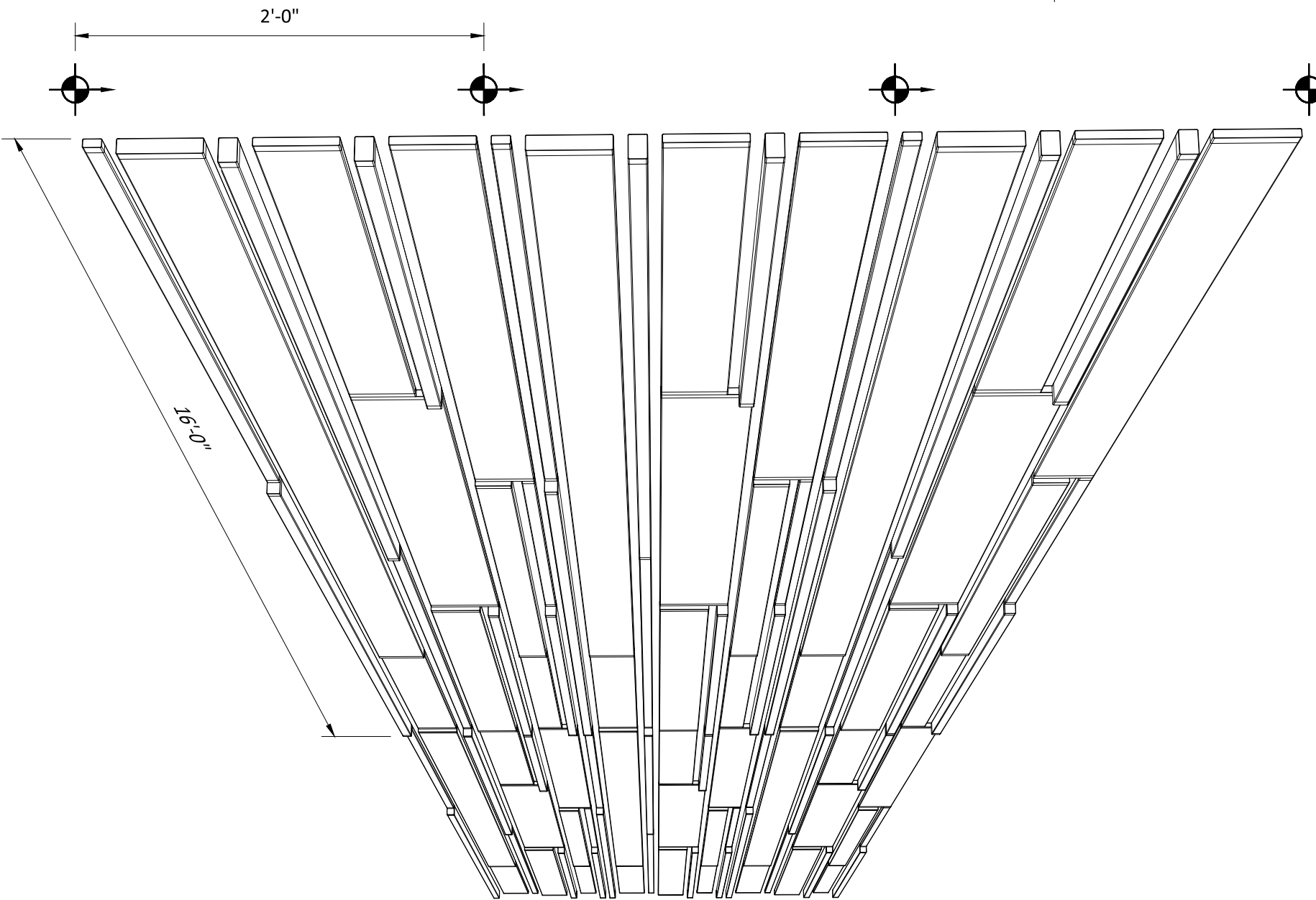
SCALE: AS SHOWN

DRAWN BY: HDA ENGINEERING

DATE: 8/15/16



MIKE RCP
SCALE: 3/4" = 1'-0"



MIKE ELEVATION
SCALE: 3" = 1'-0"

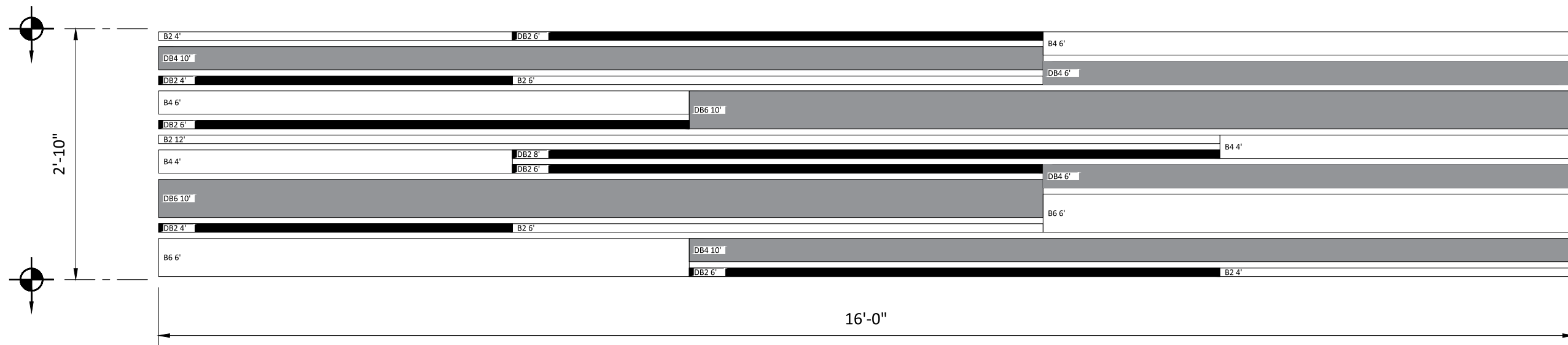
SPECIFICATIONS

(unless noted otherwise)

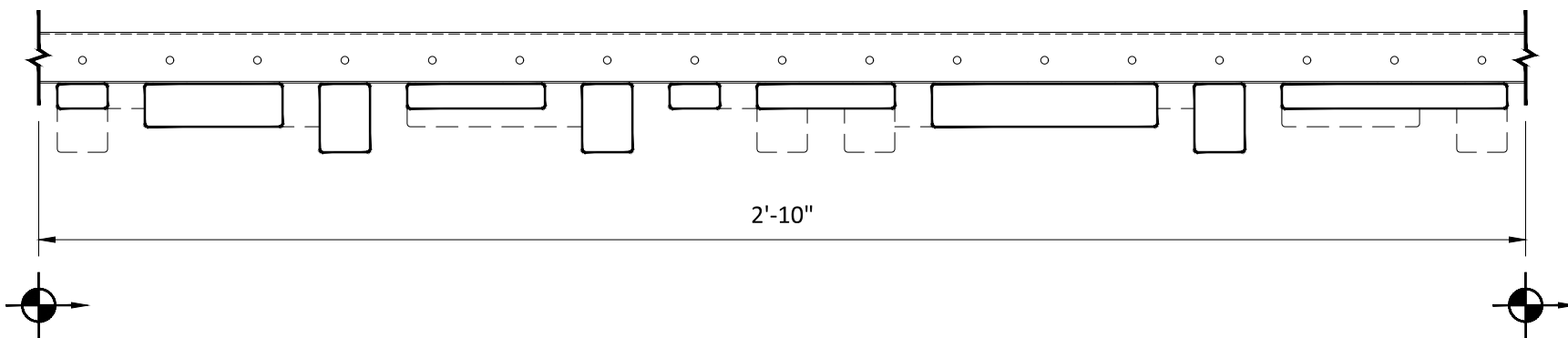
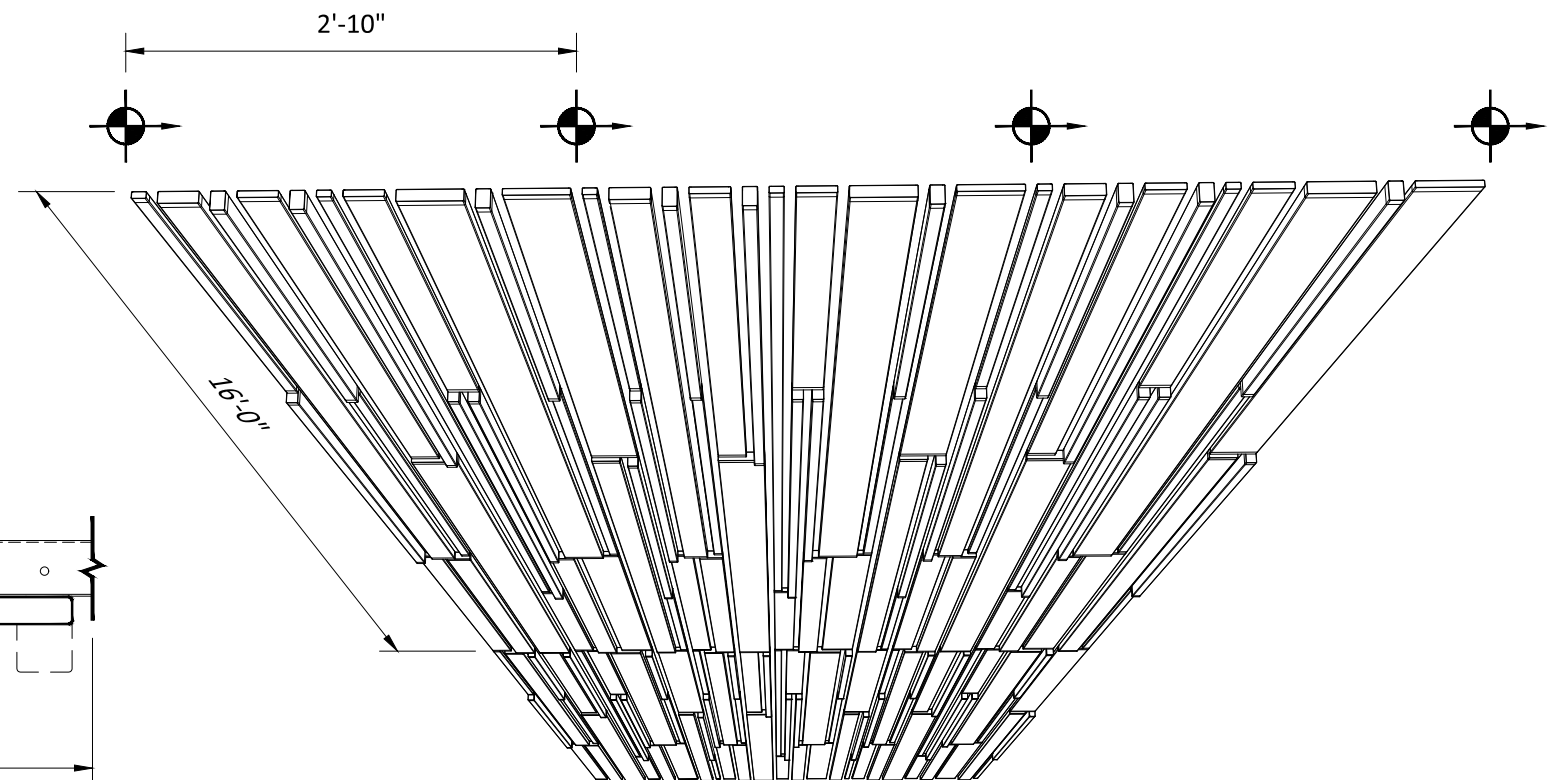
MATERIAL: SEE DETAIL A1.1 THIS SET FOR MULTI-BOX PANELS | .040" ALUMINUM
UNIVERSAL CARRIER
FINISH: PAINT | POWDER COAT | DECORATED WOOD FINISH | WOOD VENEER |
LUXACOTE
PERFORATION: SEE DETAIL A1.1 THIS SET

MULTI-BOX NETWORKS - PATTERN MIKE

PROJECT: MULTI-BOX NETWORKS PRODUCT SPECIFICATIONS
DRAWING NUMBER: MULTI-BOX NET-A1.7
SCALE: AS SHOWN
DRAWN BY: HDA ENGINEERING
DATE: 8/15/16



NOVEMBER RCP
SCALE: 3/4" = 1'-0"



NOVEMBER ELEVATION
SCALE: 3" = 1'-0"

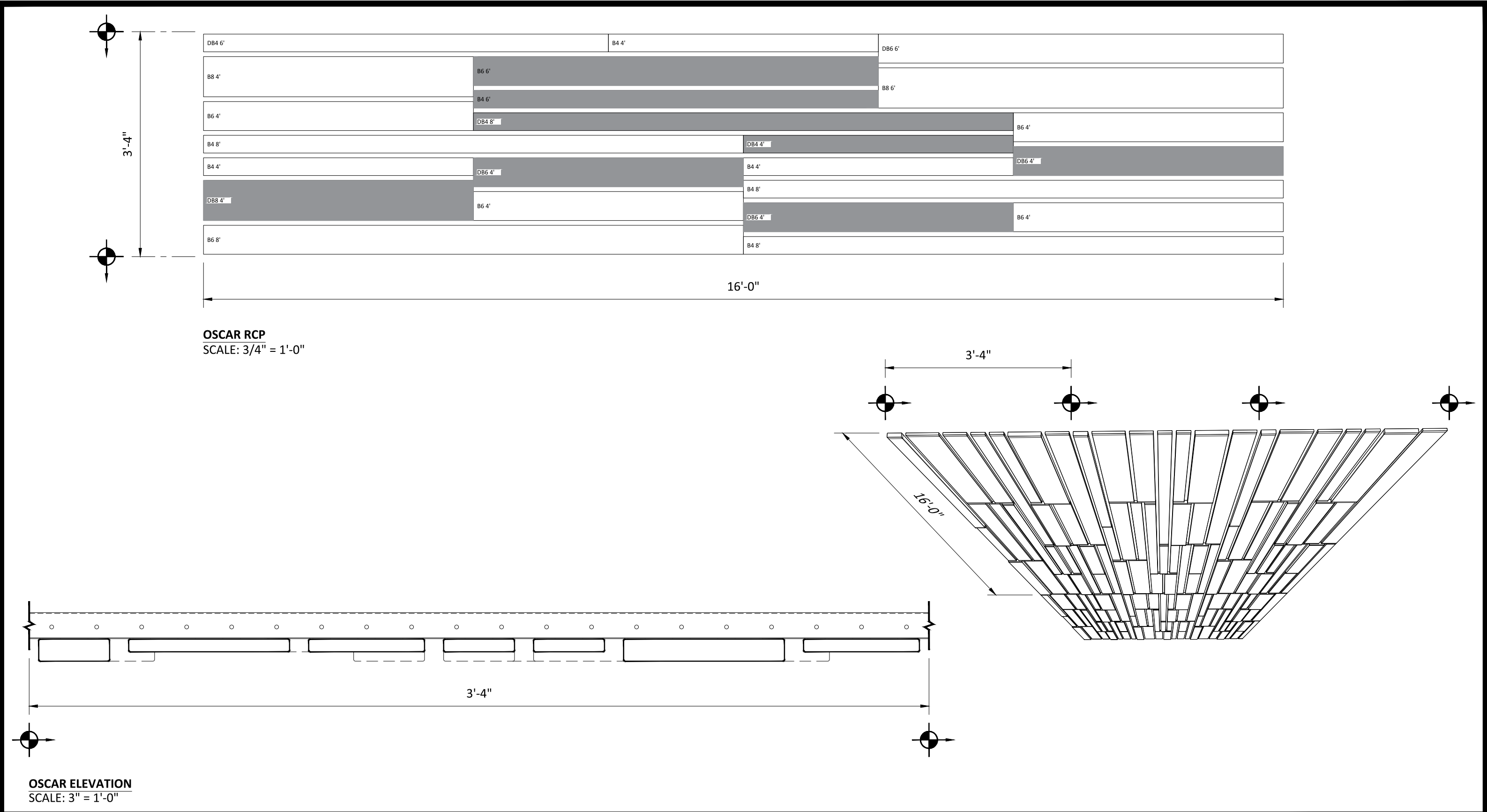
SPECIFICATIONS

(unless noted otherwise)

MATERIAL: SEE DETAIL A1.1 THIS SET FOR MULTI-BOX PANELS | .040" ALUMINUM
UNIVERSAL CARRIER
FINISH: PAINT | POWDER COAT | DECORATED WOOD FINISH | WOOD VENEER |
LUXACOTE
PERFORATION: SEE DETAIL A1.1 THIS SET

MULTI-BOX NETWORKS - PATTERN NOVEMBER

PROJECT: MULTI-BOX NETWORKS PRODUCT SPECIFICATIONS
DRAWING NUMBER: MULTI-BOX NET-A1.8
SCALE: AS SHOWN
DRAWN BY: HDA ENGINEERING
DATE: 8/15/16



SPECIFICATIONS

(unless noted otherwise)

MATERIAL: SEE DETAIL A1.1 THIS SET FOR MULTI-BOX PANELS | .040" ALUMINUM
UNIVERSAL CARRIER
FINISH: PAINT | POWDER COAT | DECORATED WOOD FINISH | WOOD VENEER |
LUXACOTE
PERFORATION: SEE DETAIL A1.1 THIS SET

MULTI-BOX NETWORKS - PATTERN OSCAR

PROJECT: MULTI-BOX NETWORKS PRODUCT SPECIFICATIONS
DRAWING NUMBER: MULTI-BOX NET-A1.9
SCALE: AS SHOWN
DRAWN BY: HDA ENGINEERING
DATE: 8/15/16