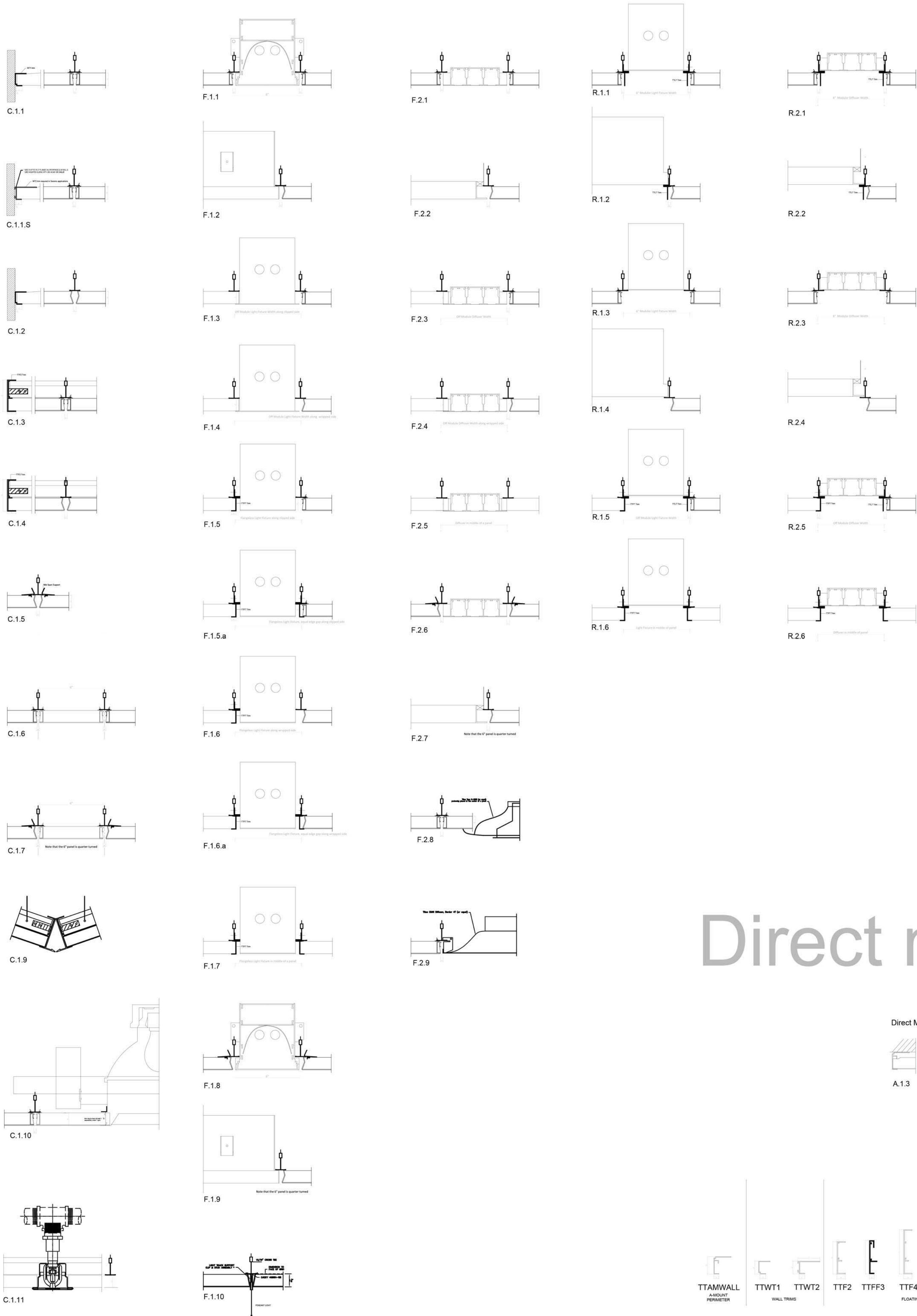
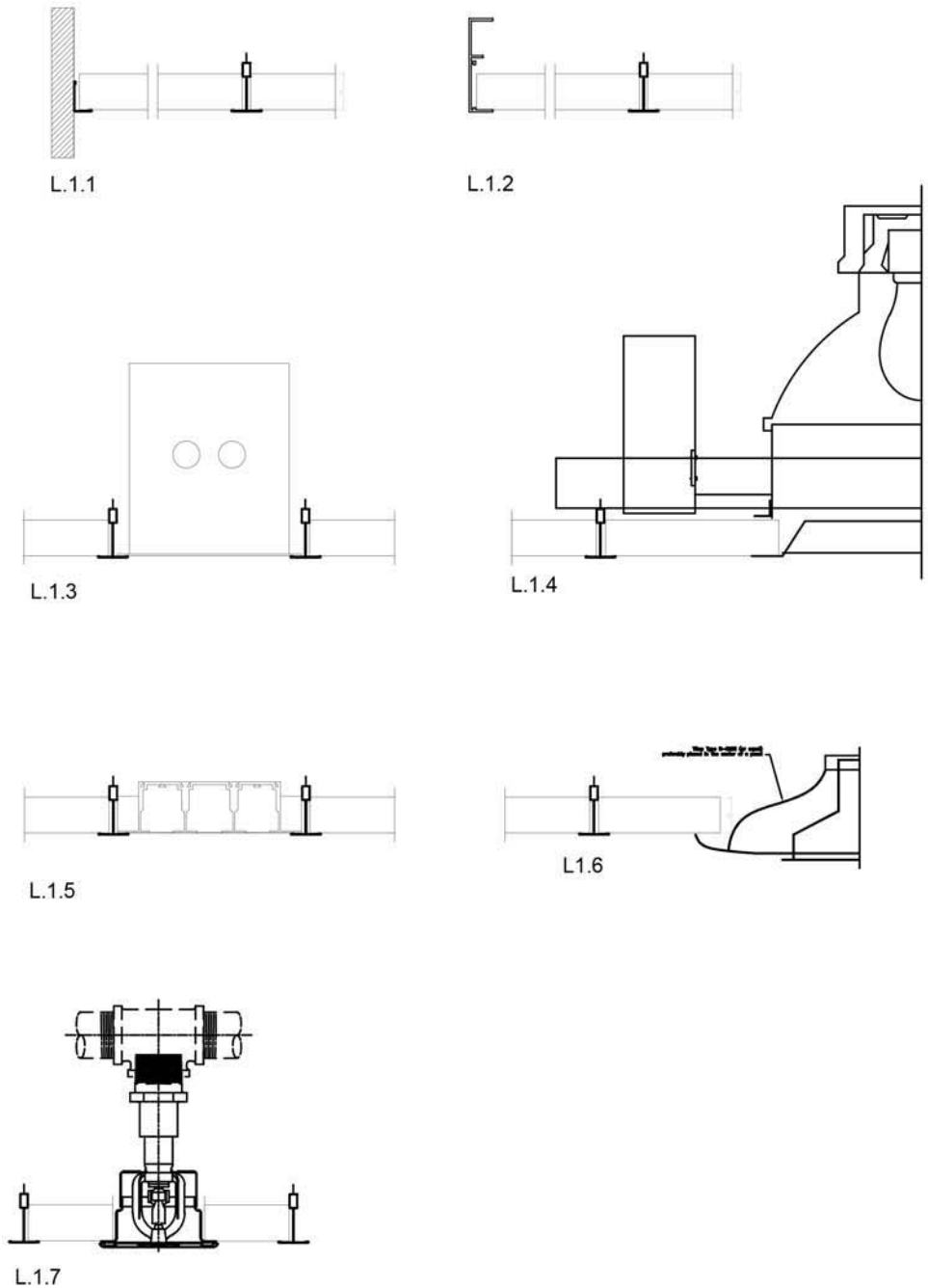


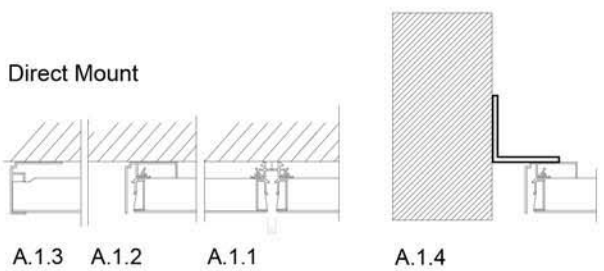
Swing Down



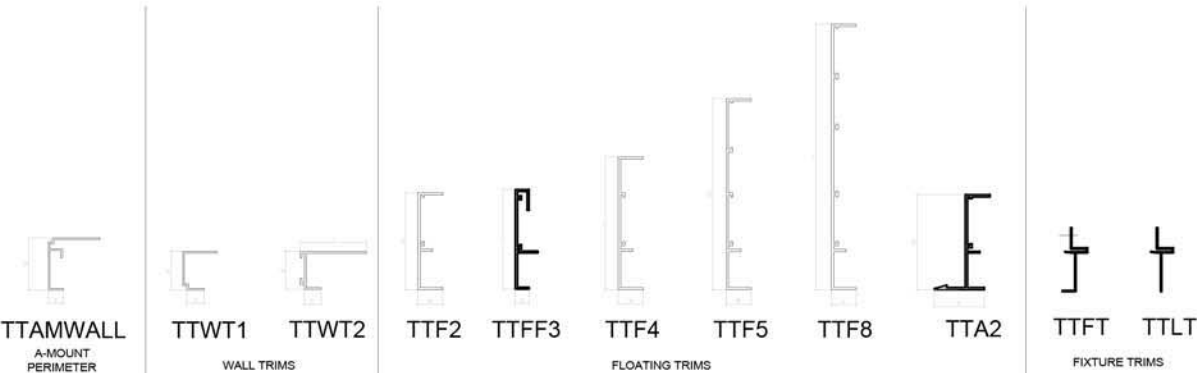
Lay-in



Direct mount



Trims



GENERAL NOTES

- Ceiling installation to be in accordance with ASTM C636 & ASTM E580, and local code requirements for seismic bracing.
- The purpose of these drawings is to represent installation of Hunter Douglas products ONLY. All dimensions are to be field verified and approved by the contractor prior to fabrication.
- Return approved shop drawings to Hunter Douglas to release for fabrication.
- All quantities are to be reviewed and approved by the customer prior to fabrication.
- This material list is an ESTIMATE ONLY. The customer is responsible for reviewing and verifying ALL information listed above prior to ordering material. Excess material will not be accepted for returns or credit. If additional material is necessary, set-up charges may apply.
- Unless shown otherwise, all penetrations including light fixtures, diffusers, speakers, sprinkler heads, etc., are to be field located and field cut. Hunter Douglas will not be responsible for final location and placement of penetrations. Typically, penetrations are not dimensioned or located on Hunter Douglas shop drawings unless the holes are factory cut. All "fixtures" are to be independently supported. Trim for all penetrations are by others. Any fixture or other penetration shown is solely based on information provided to Hunter Douglas.
- Architect / General Contractor: Please reference appropriate contract documents for coordination with other trades.
- If there are any questions in relation to Hunter Douglas products on this project, please contact us at 1-800-366-4327 (8:00am - 5:00pm EST Monday-Friday).

*All rights reserved.
This drawing is the property of Hunter Douglas.
It may not be copied or multiplied, neither wholly nor partly.
It may not be submitted for perusal to third parties.*

REVISIONS:	DATE	BY
1.		

DRAWN BY: HD	CHECKED BY: HD
DATE:	PAGE SIZE: 24x36

PROJECT: All Standard Details for Techstyle

CUSTOMER:

PAGE TITLE:

DRAWING NUMBER:

SHEET:

SCALE: various