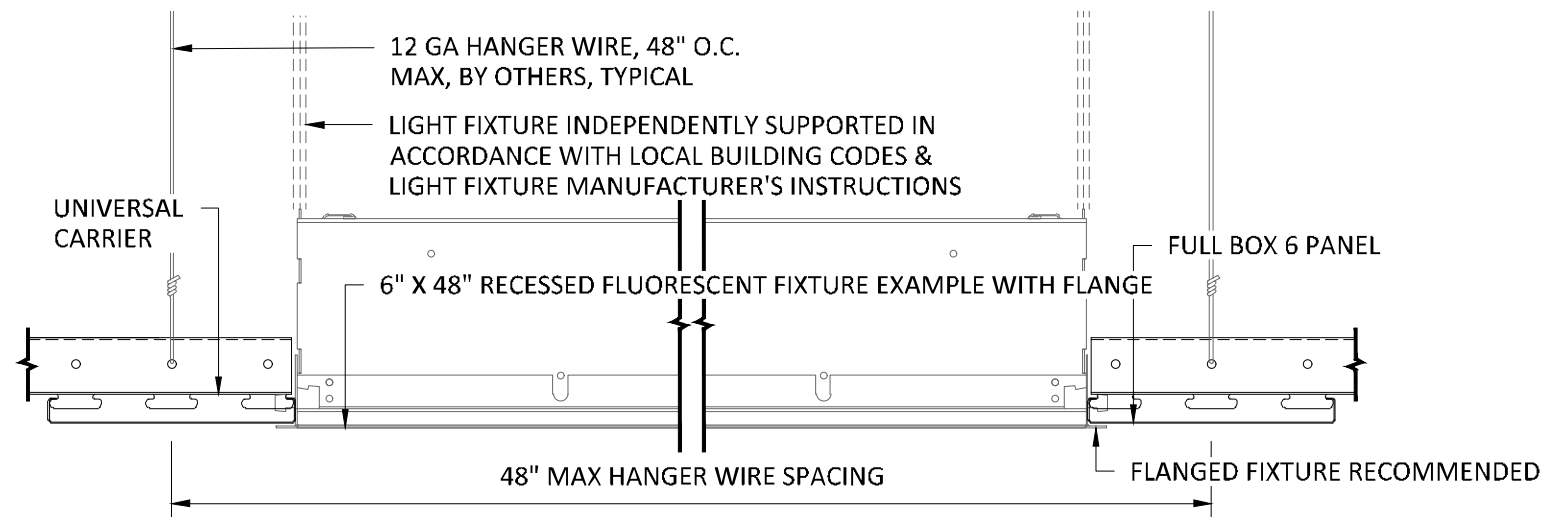


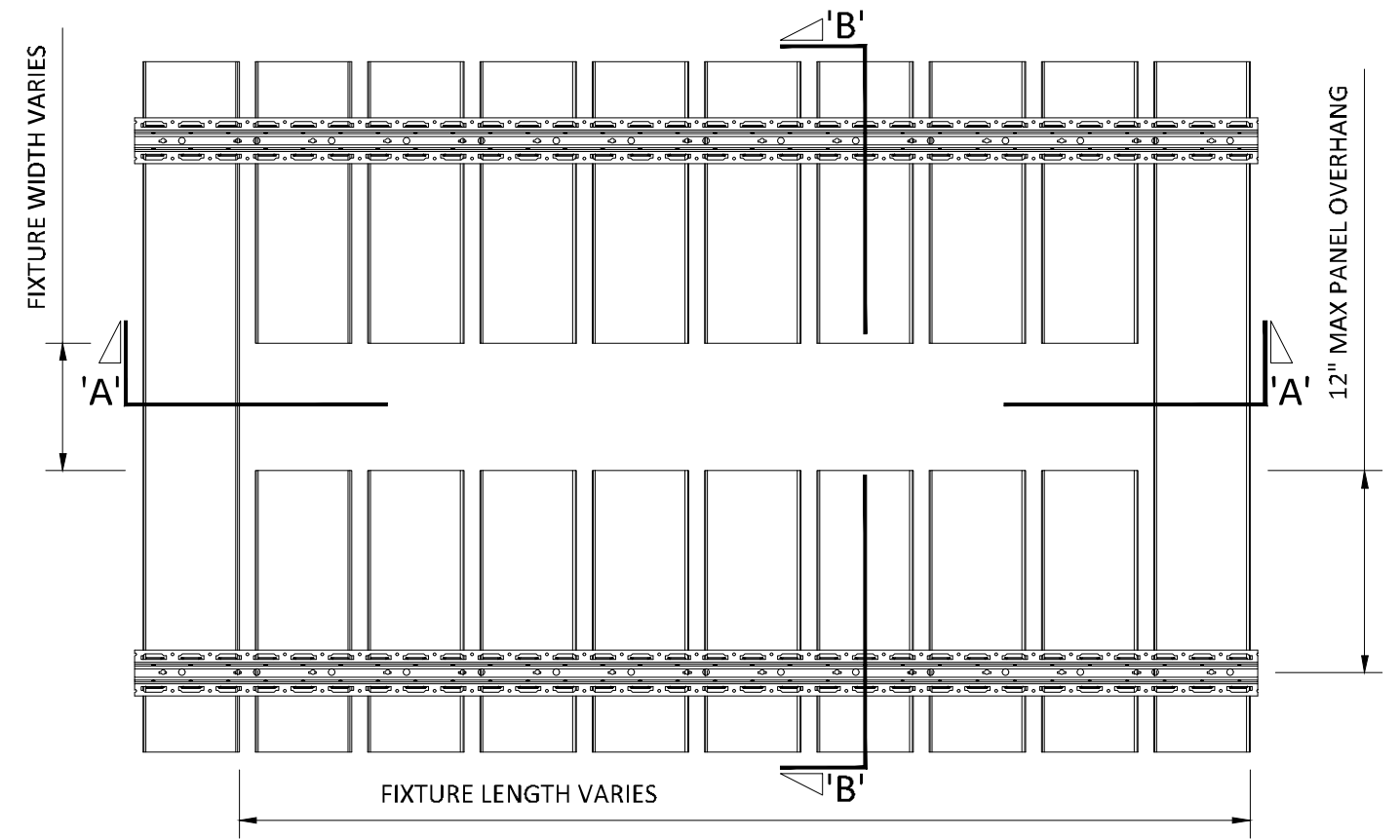
TYPICAL ISOMETRIC

SCALE: NOT TO SCALE



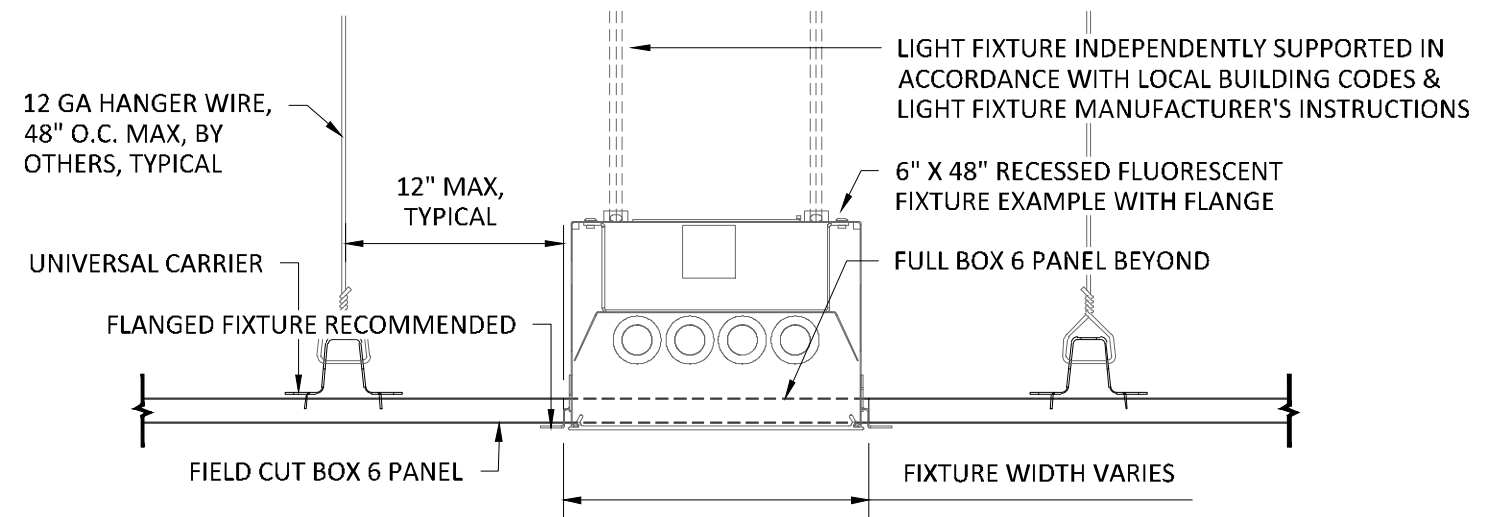
SECTION 'A'

SCALE: 3" = 1'-0"



TOP VIEW

SCALE: NOT TO SCALE



SECTION 'B'

SCALE: 3" = 1'-0"

NOTE: FIXTURE WITH TRIM FLANGE NOT BY HUNTER DOUGLAS

SPECIFICATIONS

(unless noted otherwise)

MATERIAL: .020" | .025" | .032" | .040" ALUMINUM BOX 6 PANEL | .040" ALUMINUM
UNIVERSAL CARRIER
FINISH: PAINT | POWDER COAT | DECORATED WOOD FINISH | WOOD VENEER |
LUXACOTE
PERFORATION: NON-PERFORATED | #160

FIELD CUT PANEL FOR TYPICAL FIXTURE

PROJECT: LINEAR BOX 6 PRODUCT SPECIFICATIONS
DRAWING NUMBER: BOX6-A1.9
SCALE: AS SHOWN
DRAWN BY: HDA ENGINEERING
DATE: 12/5/16