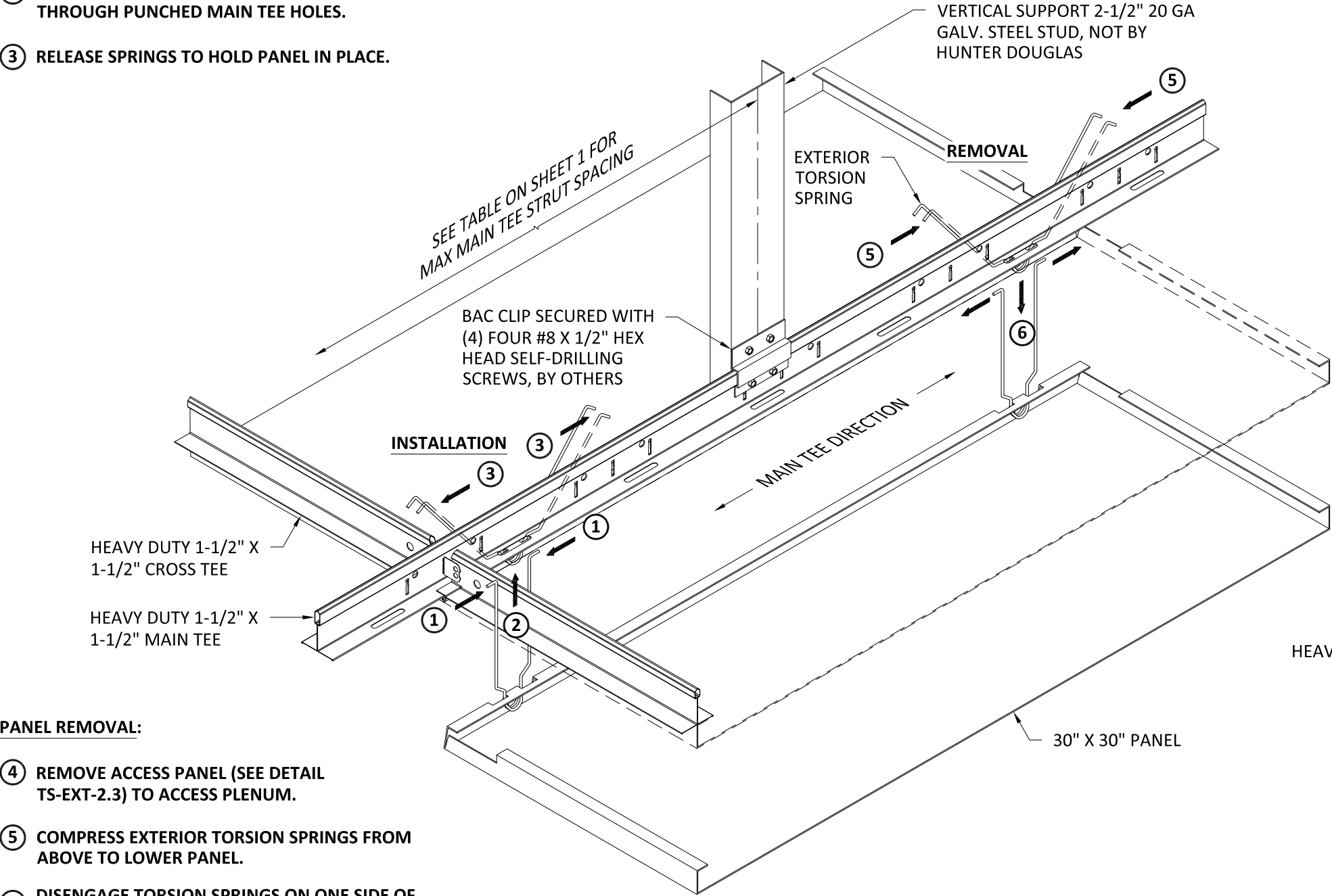


PANEL INSTALLATION:

- 1 COMPRESS EXTERIOR TORSION SPRINGS.
- 2 LIFT PANEL AND PUSH TORSION SPRINGS THROUGH PUNCHED MAIN TEE HOLES.
- 3 RELEASE SPRINGS TO HOLD PANEL IN PLACE.



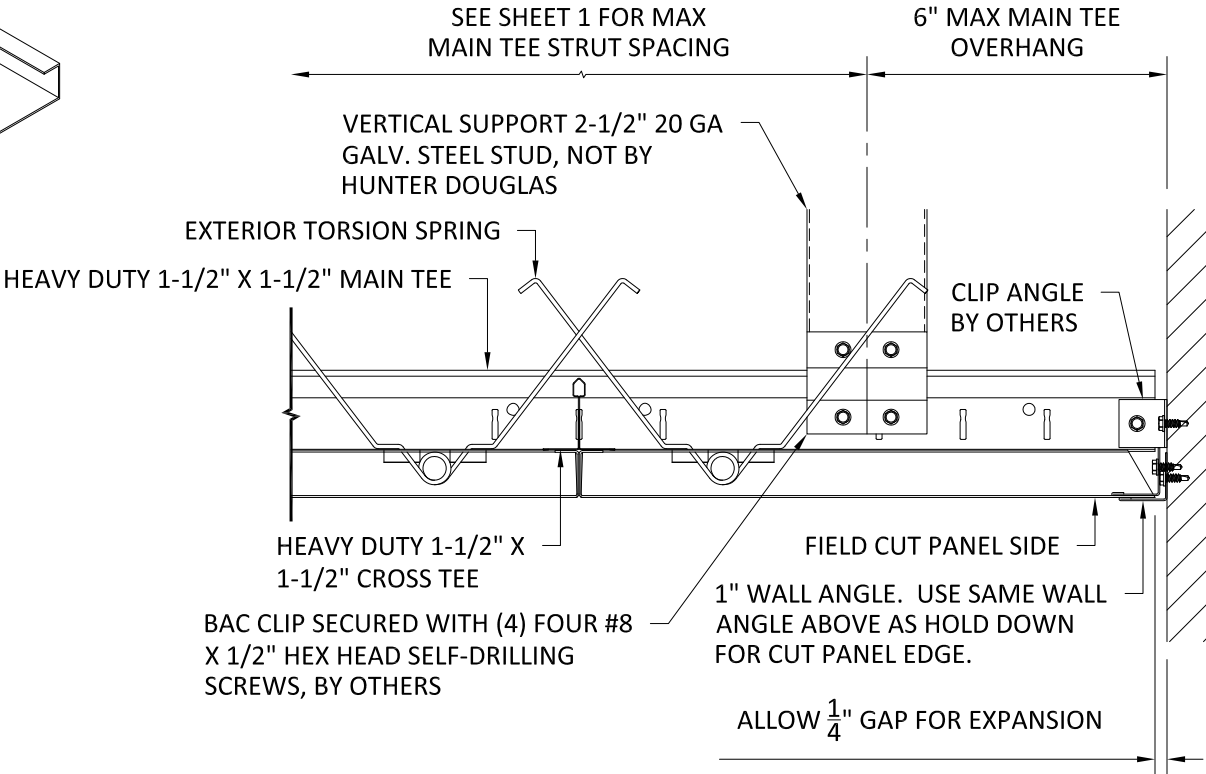
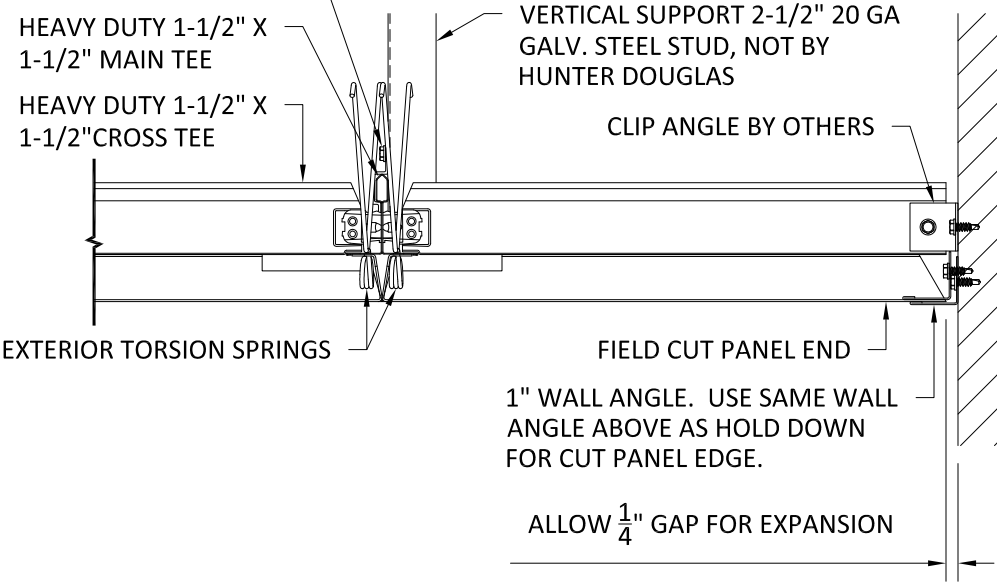
PANEL REMOVAL:

- 4 REMOVE ACCESS PANEL (SEE DETAIL TS-EXT-2.3) TO ACCESS PLENUM.
- 5 COMPRESS EXTERIOR TORSION SPRINGS FROM ABOVE TO LOWER PANEL.
- 6 DISENGAGE TORSION SPRINGS ON ONE SIDE OF PANEL. PANEL WILL HINGE DOWN AND HANG IN PLACE OR MAY BE COMPLETELY REMOVED.

30" X 30" PANEL INSTALLATION

SCALE: NOT TO SCALE

BAC CLIP SECURED WITH (4) FOUR #8 X 1/2" HEX HEAD SELF-DRILLING SCREWS, BY OTHERS



TYPICAL WALL TERMINATIONS

SCALE: 3" = 1'-0"

HunterDouglasContract

CEILINGS

5015 Oakbrook Parkway, Suite 100  
Norcross, GA 30093  
800-366-4327 / 770-806-9557  
fax: 770-806-0214

All rights reserved. This drawing is the property of Hunter Douglas and may not be copied or multiplied neither wholly nor partly. It may not be submitted for perusal to third parties either.

www.hunterdouglascontract.com

SPECIFICATIONS  
(unless noted otherwise)

MATERIAL: .050" ALUMINUM

LUXALON<sup>®</sup>  
METAL CEILINGS

WoodWright<sup>®</sup>  
WOOD CEILINGS

Techstyle<sup>®</sup>  
ACOUSTICAL CEILINGS

TOLERANCES  
(unless noted otherwise)

DECIMAL: .0 +/- .060  
.00 +/- .030  
.000 +/- .010  
FRACTIONAL: +/- 1/32"  
ANGULAR: +/- 1/2° (.5°)

30" X 30" PANEL INSTALLATION DETAILS

PROJECT: EXTERIOR TORSION SPRING  
DRAWING NUMBER: TS-EXT-2.2 (SHEET 2 OF 3)  
PART NUMBER:  
SCALE: AS SHOWN  
DATE: 5/9/14  
DRAWN BY: HDAP ENGINEERING