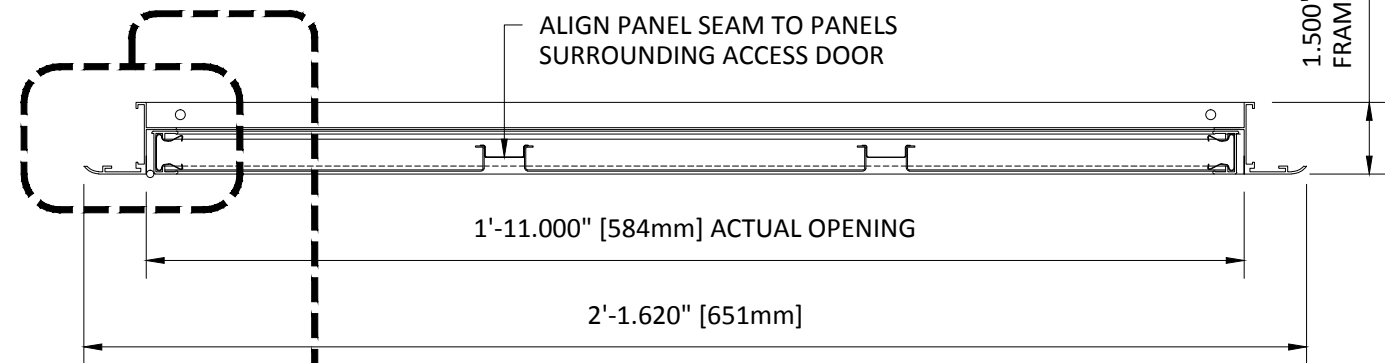
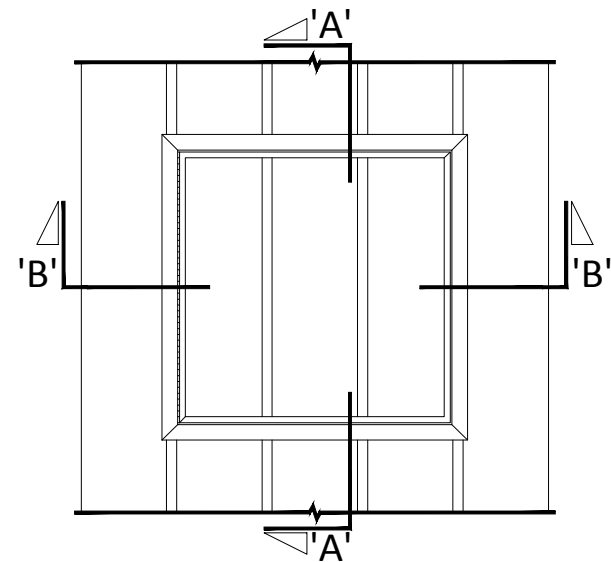
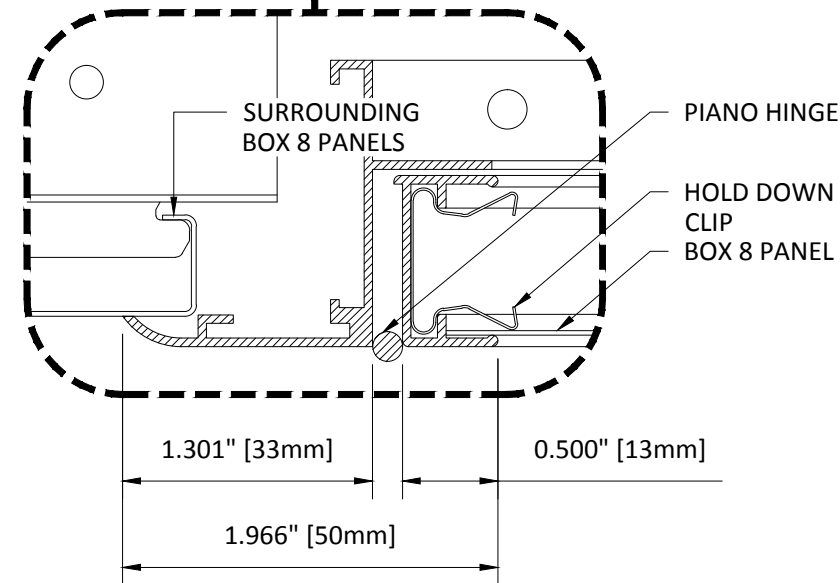


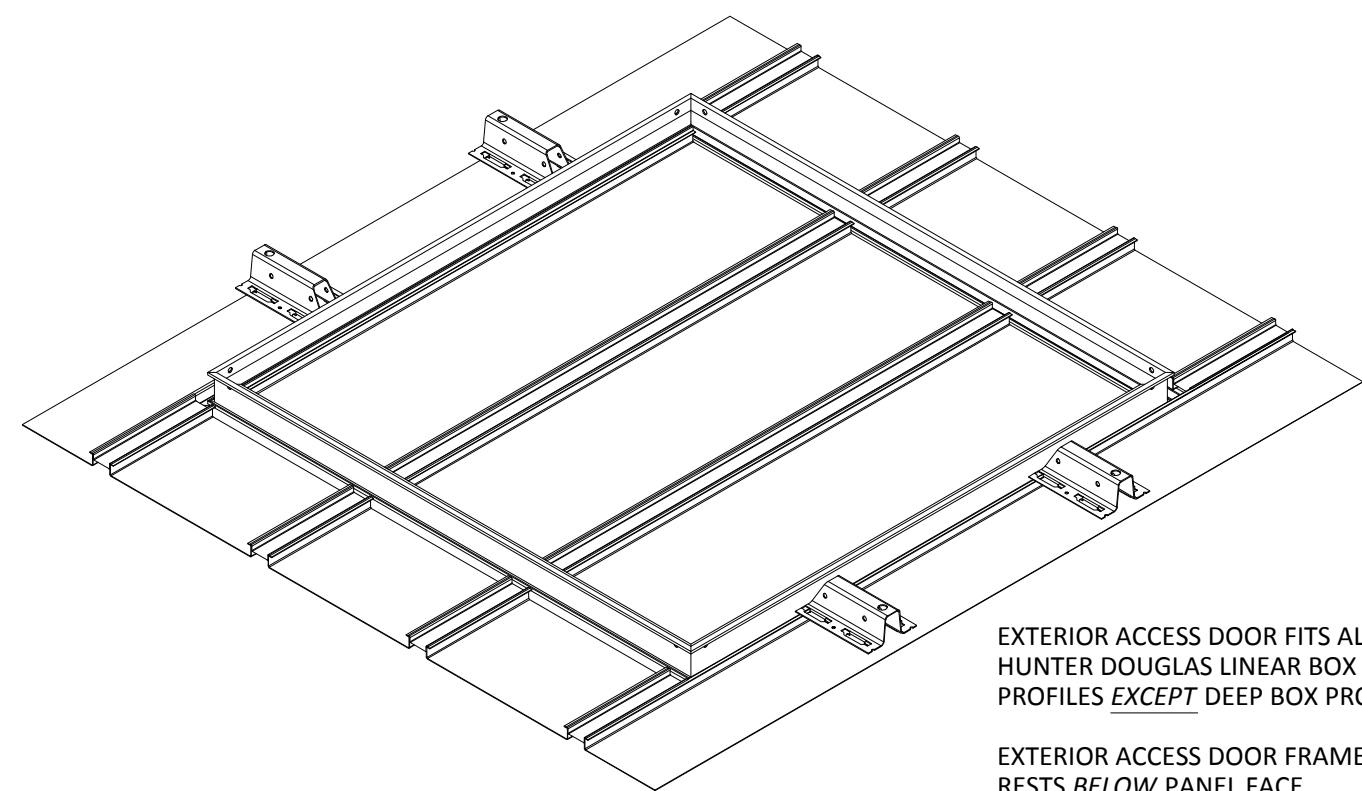
**SECTION 'A'**  
SCALE: 3" = 1'-0"



**SECTION 'B'**  
SCALE: 3" = 1'-0"



**VIEW FROM BELOW:**  
SCALE: NOT TO SCALE

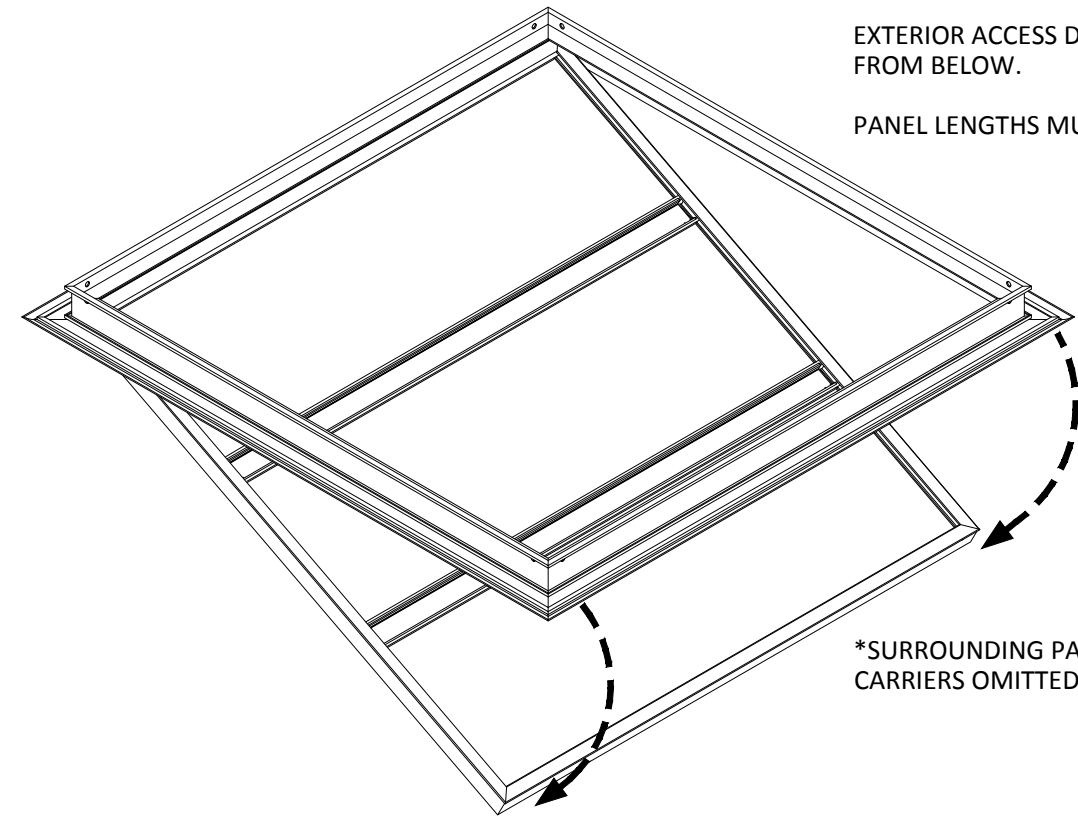


EXTERIOR ACCESS DOOR FITS ALL HUNTER DOUGLAS LINEAR BOX PROFILES EXCEPT DEEP BOX PROFILES.

EXTERIOR ACCESS DOOR FRAME RESTS BELOW PANEL FACE.

EXTERIOR ACCESS DOOR IS EXPOSED FROM BELOW.

PANEL LENGTHS MUST BE FIELD-CUT.



\*SURROUNDING PANELS AND CARRIERS OMITTED FOR CLARITY

**EXTERIOR INSTALLATION**

**HunterDouglasContract**

**CEILINGS**

1 Hunter Douglas Circle  
Thornton, CO 80241  
800-727-8953  
fax: 720-872-7850

5015 Oakbrook Parkway, Suite 100  
Norcross, GA 30093  
800-366-4327 / 770-806-9557  
fax: 770-806-0214

*All rights reserved. This drawing is the property of Hunter Douglas and may not be copied or multiplied neither wholly nor partly. It may not be submitted for perusal to third parties either.*

[www.hunterdouglascontract.com](http://www.hunterdouglascontract.com)

**SPECIFICATIONS**  
(unless noted otherwise)  
MATERIAL: 0.032" OR 0.040" ALUMINUM BOX 8 PANEL  
0.040" ALUMINUM UNIVERSAL CARRIER  
FINISH: PAINT / POWDER COAT / LUXACOTE / DECORATED WOOD FINISH  
PERFORATION: #124 (15% OPEN) / NON-PERFORATED

**TOLERANCES**  
(unless noted otherwise)  
DECIMAL: .0 +/- .060  
.00 +/- .030  
.000 +/- .010  
FRACTIONAL: +/- 1/32"  
ANGULAR: +/- 1/2° (.5°)

**LUXALON**  
METAL CEILINGS

**WoodWright**  
WOOD CEILINGS

**Techstyle**  
ACOUSTICAL CEILINGS

**2'-0" X 2'-0" EXTERIOR ACCESS DOOR**

PROJECT: LINEAR EXTERIOR BOX 8 PRODUCT SPECIFICATIONS  
DRAWING NUMBER: BOX8-EXT11X17-M001  
PART NUMBER: N/A  
SCALE: AS SHOWN  
DATE: 3/5/14  
DRAWN BY: M HOWARD