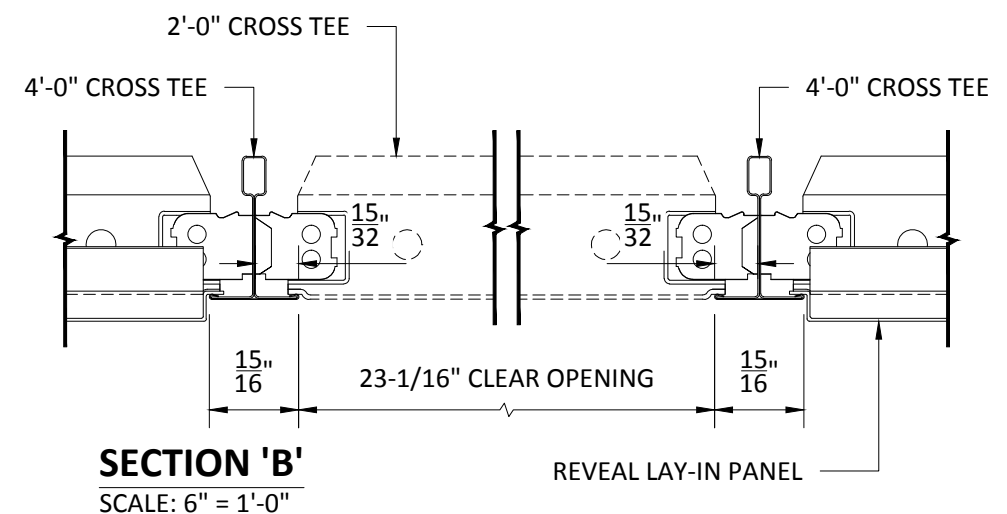
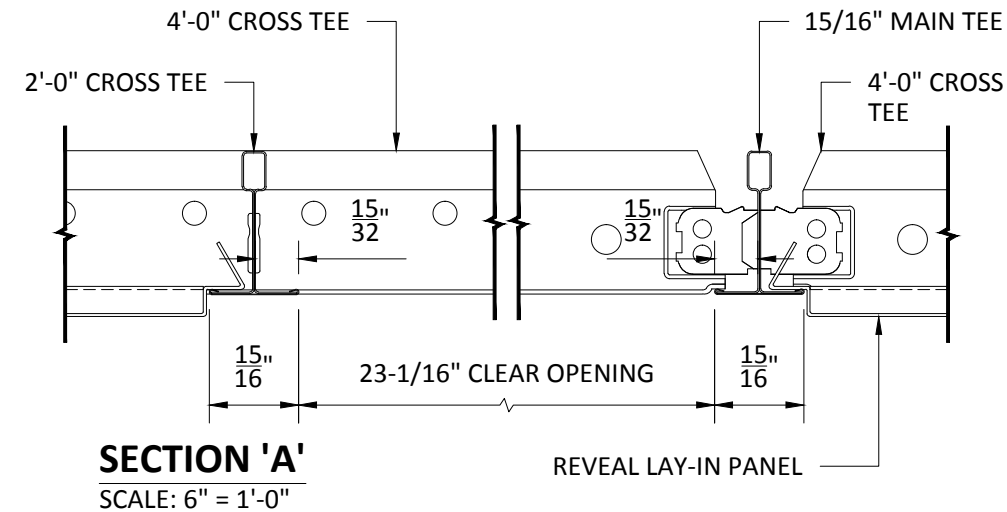
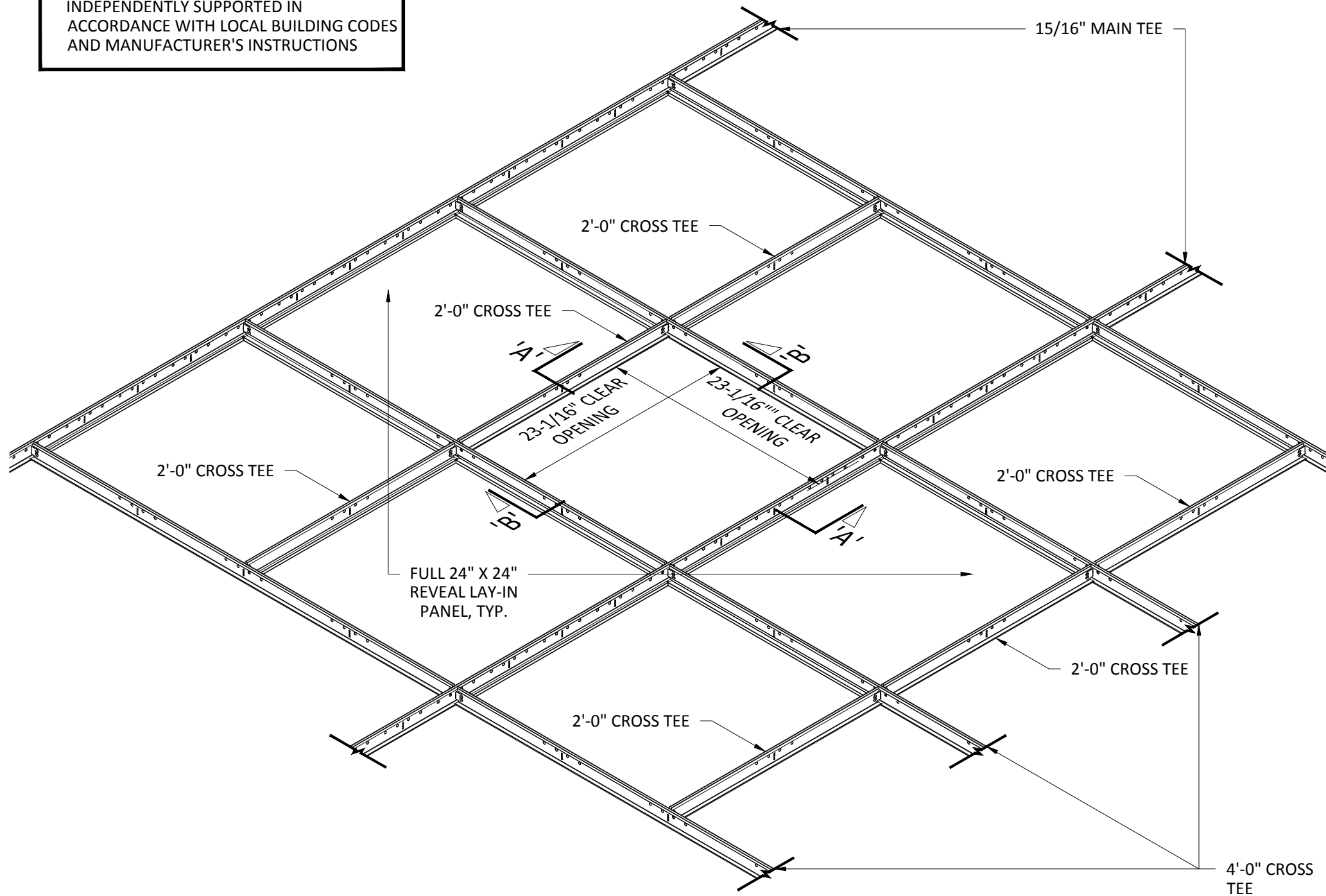


NOTE:  
FIXTURE OR DIFFUSER MUST BE  
INDEPENDENTLY SUPPORTED IN  
ACCORDANCE WITH LOCAL BUILDING CODES  
AND MANUFACTURER'S INSTRUCTIONS



## INTERIOR INSTALLATION

\*VERTICAL SUPPORT OMITTED FOR CLARITY  
\*\*REVEAL LAY-IN PANELS FOR 15/16" GRID SHOWN

# HunterDouglasContract

## CEILINGS

5015 Oakbrook Parkway, Suite 100  
Norcross, GA 30093  
800-366-4327 / 770-806-9557  
fax: 770-806-0214

All rights reserved. This drawing is the property of Hunter Douglas and may not be copied or multiplied neither wholly nor partly. It may not be submitted for perusal to third parties either.

www.hunterdouglascontract.com

### SPECIFICATIONS

(unless noted otherwise)  
MATERIAL: 0.032" OR 0.040" ALUMINUM LAY-IN PANEL  
FINISH: PAINT / POWDER COAT / DECORATED WOOD FINISH / WOOD VENEER  
PERFORATION: SEE DETAIL A1.1 THIS SET

**LUXALON**  
METAL CEILINGS

**WoodWright**  
WOOD CEILINGS

**Techstyle**  
ACOUSTICAL CEILINGS

### TOLERANCES

(unless noted otherwise)  
DECIMAL: .0 +/- .060  
.00 +/- .030  
.000 +/- .010  
FRACTIONAL: +/- 1/32"  
ANGULAR: +/- 1/2° (.5°)

## 2'-0" X 2'-0" FIXTURE OPENING SPECIFICATIONS

PROJECT: LAY-IN PRODUCT SPECIFICATIONS  
DRAWING NUMBER: LAY-IN-A1.7  
PART NUMBER: N/A  
SCALE: AS SHOWN  
DATE: 8/20/14  
DRAWN BY: HDAP ENGINEERING