

EXTERIOR INSTALLATION

*2' x 8' PANEL SHOWN. OTHER SIZES SIMILAR

HunterDouglasContract

CEILINGS

5015 Oakbrook Parkway, Suite 100
Norcross, GA 30093
800-366-4327 / 770-806-9557
fax: 770-806-0214

All rights reserved. This drawing is the property of Hunter Douglas and may not be copied or multiplied neither wholly nor partly. It may not be submitted for perusal to third parties either.

www.hunterdouglascontract.com

SPECIFICATIONS (unless noted otherwise)

MATERIAL: 0.040" ALUMINUM
FINISH: PAINT / POWDER COAT
PERFORATION: NONE AVAILABLE

TOLERANCES (unless noted otherwise)

DECIMAL: .0 +/- .060
.00 +/- .030
.000 +/- .010
FRACTIONAL: +/- 1/32"
ANGULAR: +/- 1/2° (.5°)

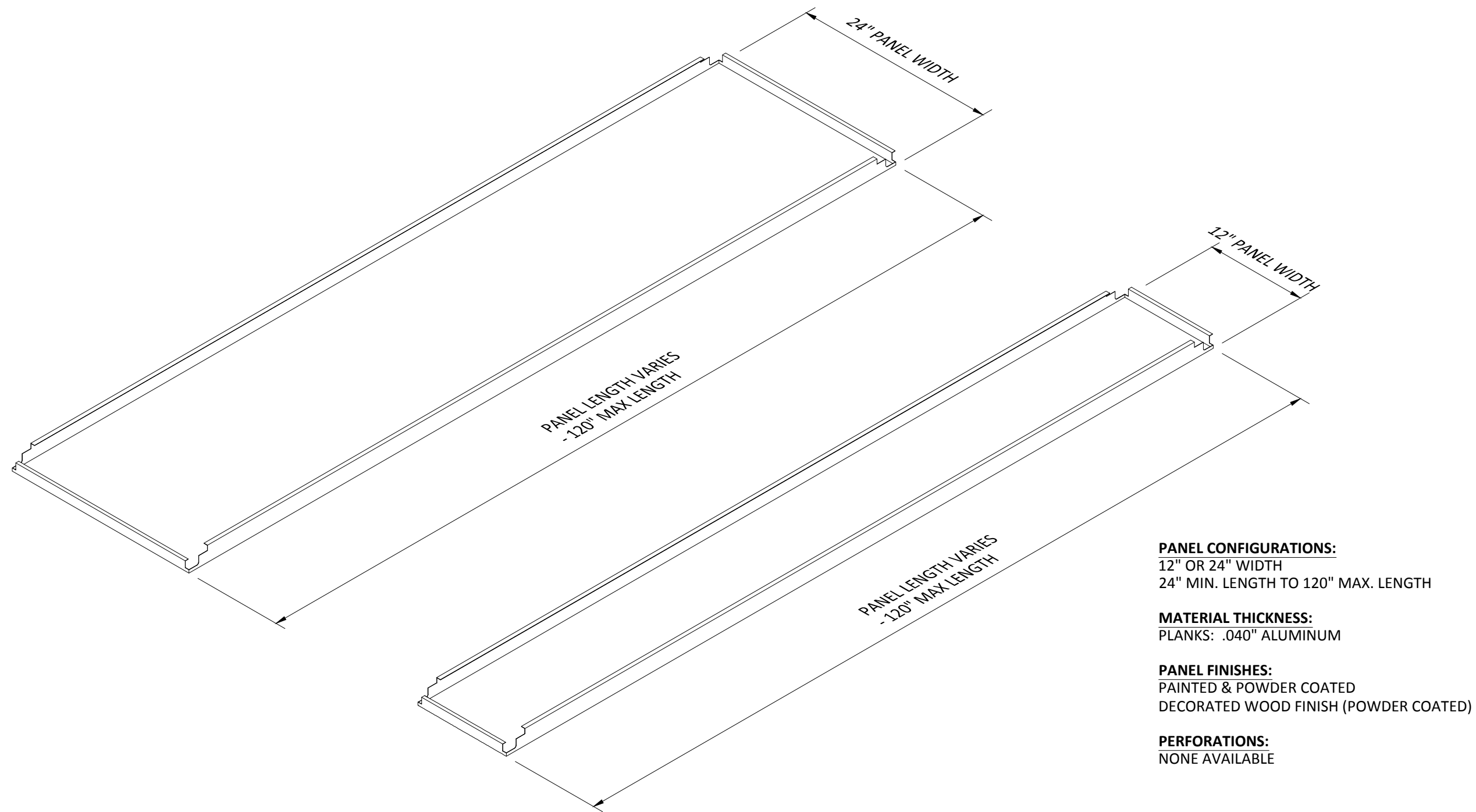
LUXALON
METAL CEILINGS

WoodWright
WOOD CEILINGS

Techstyle
ACOUSTICAL CEILINGS

OVERALL ISOMETRIC VIEW

PROJECT: EXTERIOR PLANK PRODUCT SPECIFICATIONS
DRAWING NUMBER: PLANK-B1.0
PART NUMBER: N/A
SCALE: AS SHOWN
DATE: 5/20/15
DRAWN BY: HDAP ENGINEERING



EXTERIOR INSTALLATION

HunterDouglasContract

CEILINGS

5015 Oakbrook Parkway, Suite 100
Norcross, GA 30093
800-366-4327 / 770-806-9557
fax: 770-806-0214

All rights reserved. This drawing is the property of Hunter Douglas and may not be copied or multiplied neither wholly nor partly. It may not be submitted for perusal to third parties either.

www.hunterdouglascontract.com

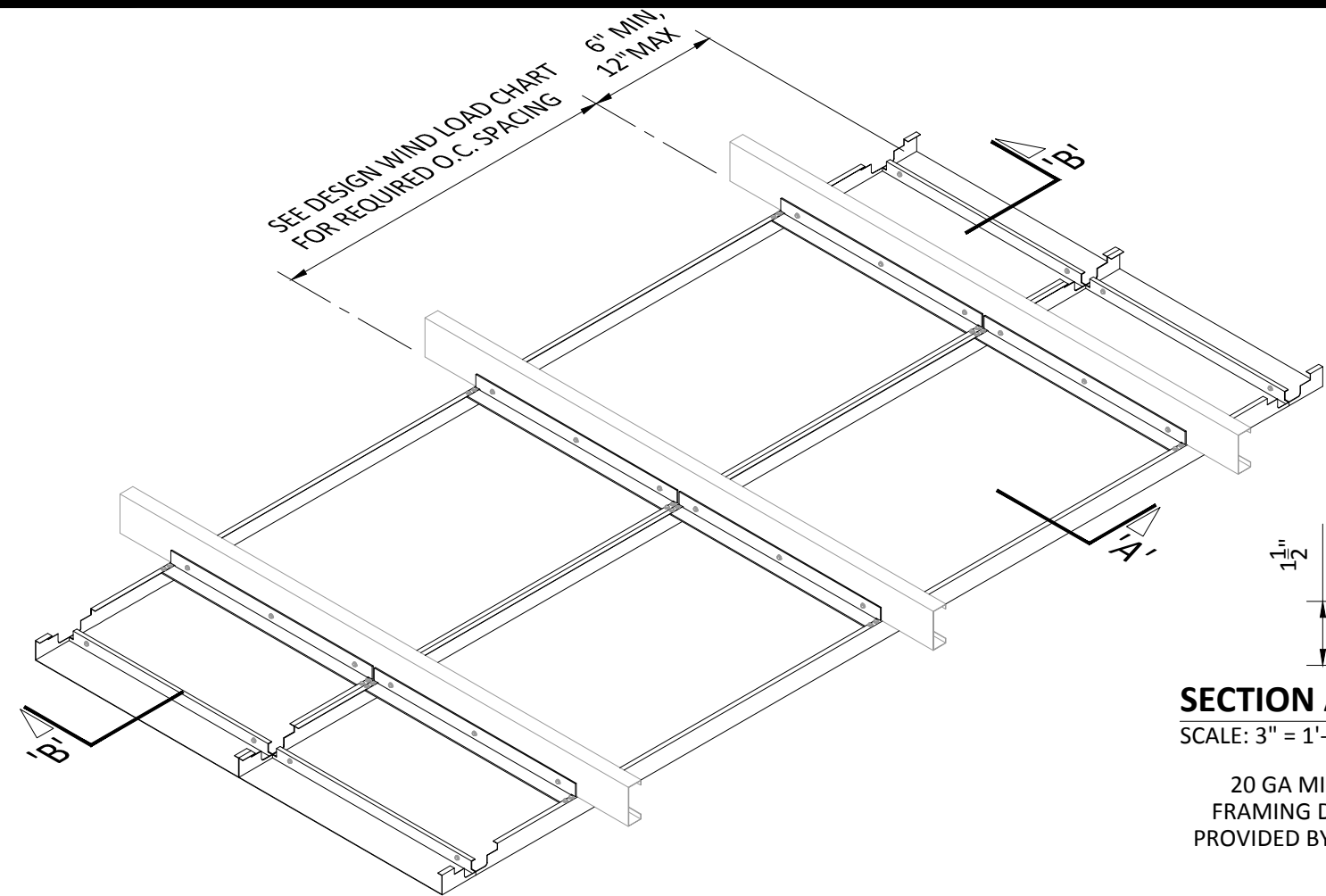
SPECIFICATIONS (unless noted otherwise)	
MATERIAL:	0.040"ALUMINUM
FINISH:	PAINT / POWDER COAT
PERFORATION:	NONE AVAILABLE



TOLERANCES (unless noted otherwise)	
DECIMAL:	.0 +/- .060 .00 +/- .030 .000 +/- .010
FRACTIONAL:	+/- 1/32"
ANGULAR:	+/- 1/2° (.5°)

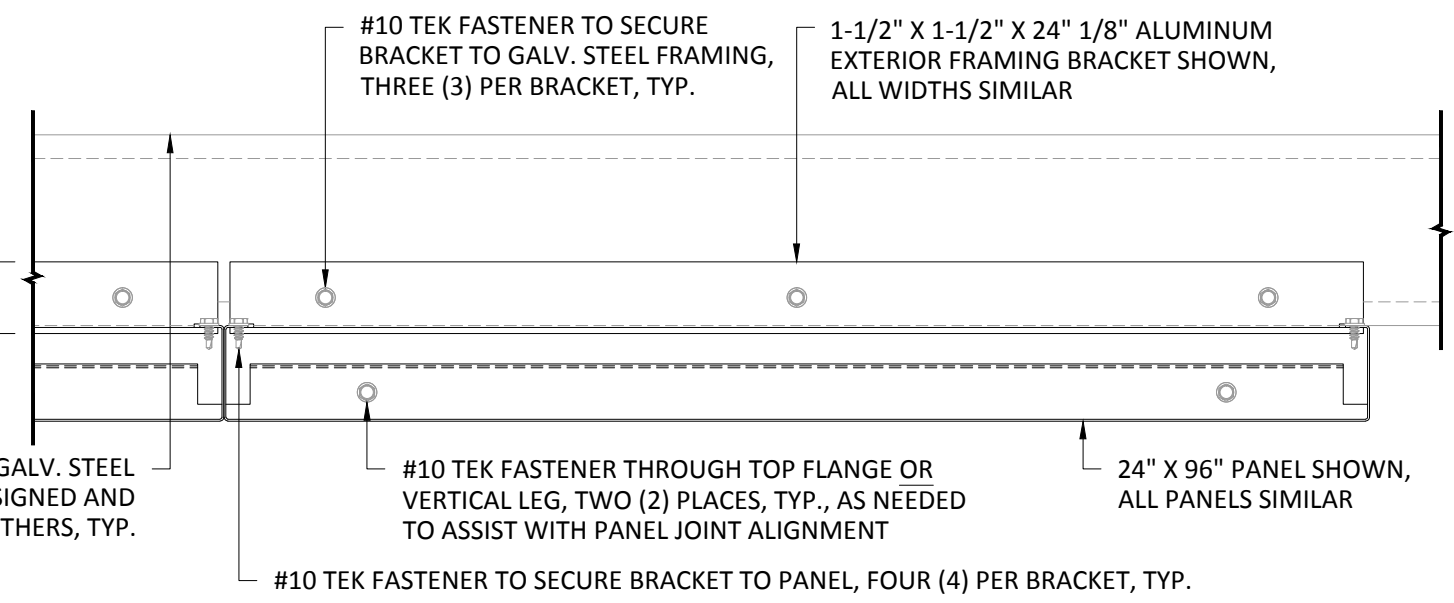


PANEL SPECIFICATIONS	
PROJECT:	EXTERIOR PLANK PRODUCT SPECIFICATIONS
DRAWING NUMBER:	PLANK-B1.1
PART NUMBER:	N/A
SCALE:	AS SHOWN
DATE:	5/20/15
DRAWN BY:	HDAP ENGINEERING

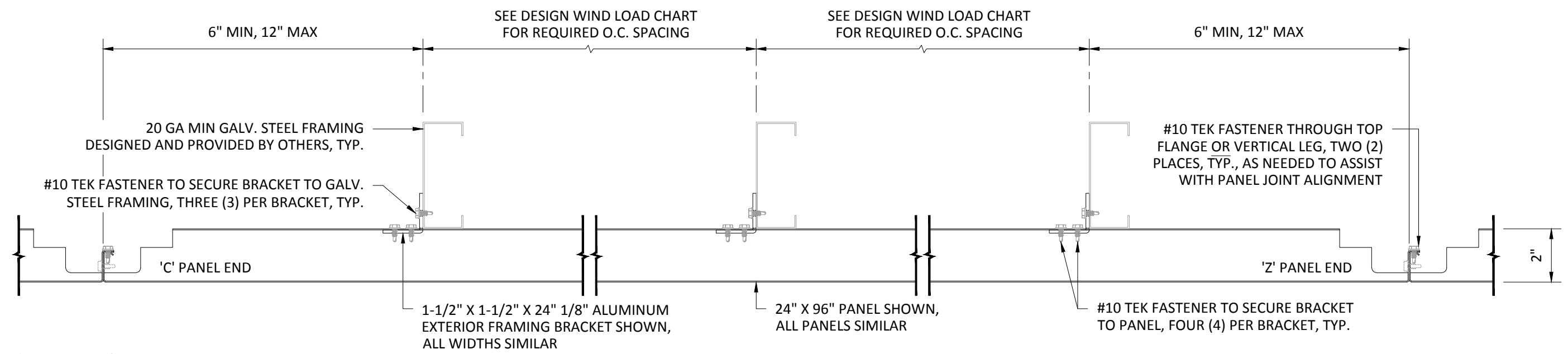


DESIGN WIND LOAD - EXTERIOR PLANK CEILING SYSTEM PANEL MATERIAL: 0.040" ALUMINUM BRACKET MATERIAL: .125" ALUMINUM FRAMING MATERIAL: 20 GA MIN GALV. STEEL *POUNDS PER SQUARE FOOT	DESIGN WIND PRESSURE (POSITIVE OR NEGATIVE PSF*)	STEEL FRAMING SPACING (BRACKET SPACING)
	20	48"
	30	42"
	40	36"
	50	30"
	60	24"

SECTION A
SCALE: 3" = 1'-0"



SECTION B
SCALE: 3" = 1'-0"



EXTERIOR INSTALLATION

*2' x 8' PANEL SHOWN. OTHER SIZES SIMILAR

HunterDouglasContract

CEILINGS

5015 Oakbrook Parkway, Suite 100
Norcross, GA 30093
800-366-4327 / 770-806-9557
fax: 770-806-0214

All rights reserved. This drawing is the property of Hunter Douglas and may not be copied or multiplied neither wholly nor partly. It may not be submitted for perusal to third parties either.

www.hunterdouglascontract.com

SPECIFICATIONS
(unless noted otherwise)

MATERIAL: 0.040"ALUMINUM
FINISH: PAINT / POWDER COAT
PERFORATION: NONE AVAILABLE

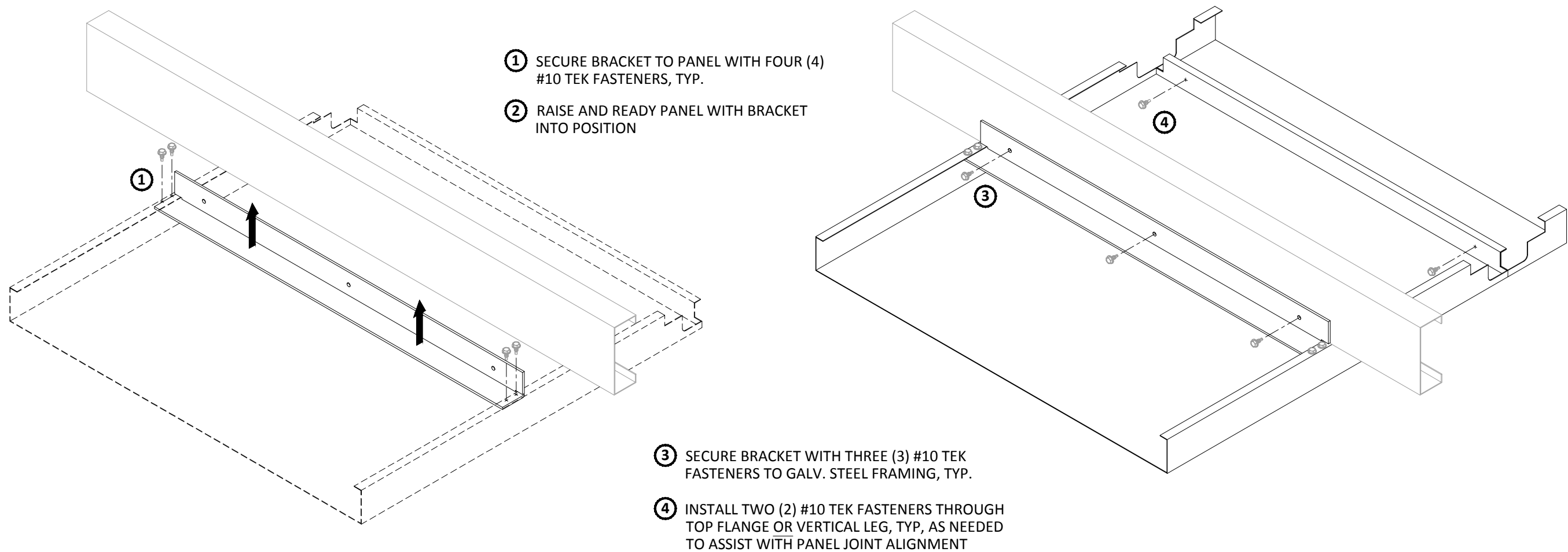
TOLERANCES
(unless noted otherwise)

DECIMAL:
.0 +/- .060
.00 +/- .030
.000 +/- .010
FRACTIONAL:
+/- 1/32"
ANGULAR:
+/- 1/2° (.5°)



EXTERIOR SUSPENSION SPECIFICATIONS

PROJECT: EXTERIOR PLANK PRODUCT SPECIFICATIONS
DRAWING NUMBER: PLANK-B1.2
PART NUMBER: N/A
SCALE: AS SHOWN
DATE: 5/20/15
DRAWN BY: HDAP ENGINEERING



EXTERIOR INSTALLATION

*PARTIAL PANEL SHOWN.

HunterDouglasContract

CEILINGS

5015 Oakbrook Parkway, Suite 100
Norcross, GA 30093
800-366-4327 / 770-806-9557
fax: 770-806-0214

All rights reserved. This drawing is the property of Hunter Douglas and may not be copied or multiplied neither wholly nor partly. It may not be submitted for perusal to third parties either.

www.hunterdouglascontract.com

SPECIFICATIONS
(unless noted otherwise)

MATERIAL: 0.040"ALUMINUM
FINISH: PAINT / POWDER COAT
PERFORATION: NONE AVAILABLE

LUXALON
METAL CEILINGS

WoodWright
WOOD CEILINGS

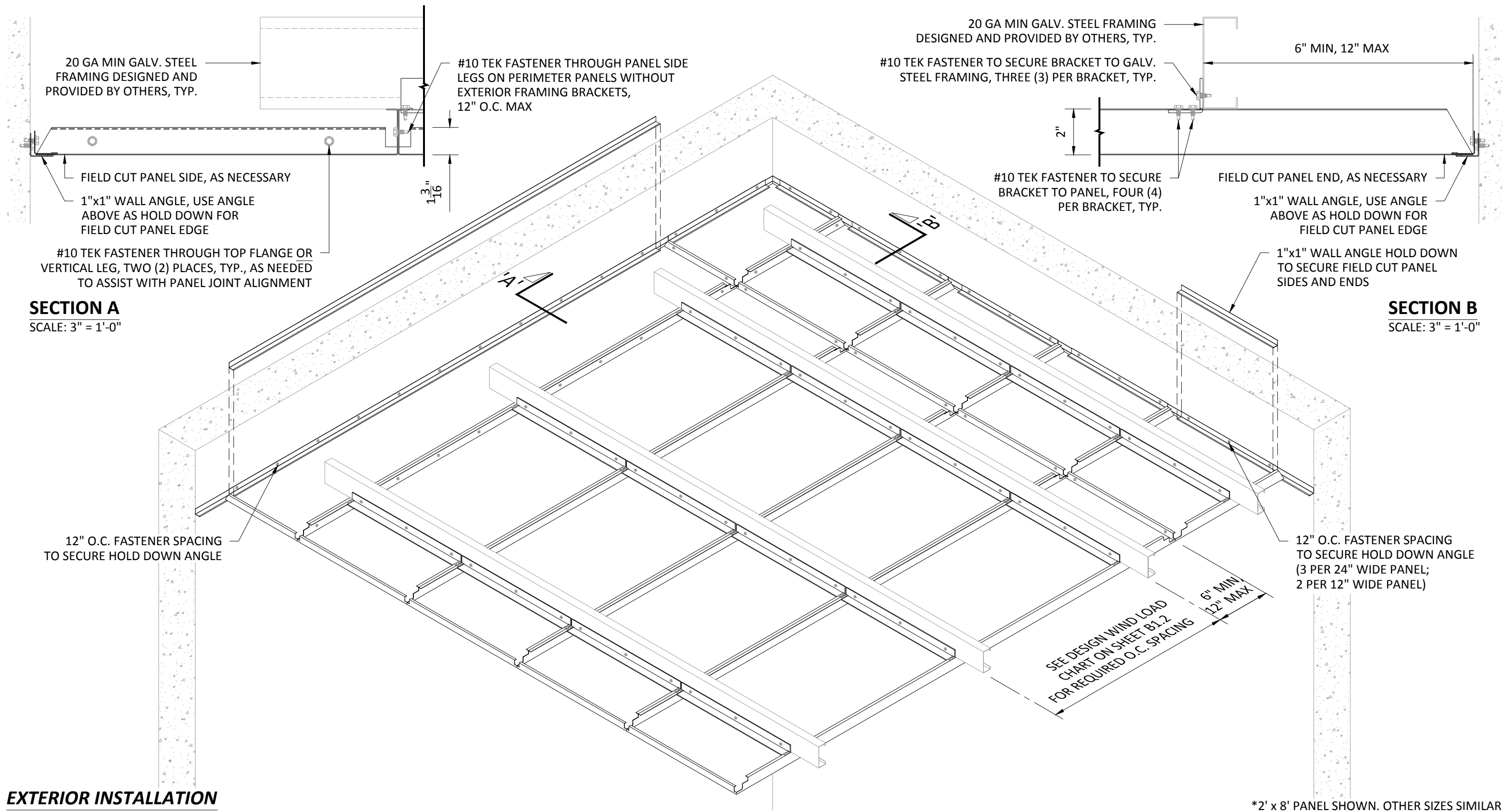
TOLERANCES
(unless noted otherwise)

DECIMAL: .0 +/- .060
.00 +/- .030
.000 +/- .010
FRACTIONAL: +/- $\frac{1}{32}$ "
ANGULAR: +/- $\frac{1}{2}^{\circ}$ (.5°)

Techstyle
ACOUSTICAL CEILINGS

FRAMING BRACKET INSTALLATION

PROJECT: EXTERIOR PLANK PRODUCT SPECIFICATIONS
DRAWING NUMBER: PLANK-B1.3
PART NUMBER: N/A
SCALE: AS SHOWN
DATE: 5/20/15
DRAWN BY: HDAP ENGINEERING



EXTERIOR INSTALLATION

HunterDouglasContract

CEILINGS

5015 Oakbrook Parkway, Suite 100
Norcross, GA 30093
800-366-4327 / 770-806-9557
fax: 770-806-0214

All rights reserved. This drawing is the property of Hunter Douglas and may not be copied or multiplied neither wholly nor partly. It may not be submitted for perusal to third parties either.

www.hunterdouglascontract.com

SPECIFICATIONS (unless noted otherwise)

MATERIAL: 0.040" ALUMINUM
FINISH: PAINT / POWDER COAT
PERFORATION: NONE AVAILABLE

LUXALON
METAL CEILINGS

WoodWright
WOOD CEILINGS

Techstyle
ACOUSTICAL CEILINGS

TOLERANCES
(unless noted otherwise)

DECIMAL: .0 +/- .060
.00 +/- .030
.000 +/- .010

FRACTIONAL: +/- $\frac{1}{32}$ "
ANGULAR: +/- $\frac{1}{2}^\circ$ (.5°)

WALL TRIM SPECIFICATIONS

PROJECT: EXTERIOR PLANK PRODUCT SPECIFICATIONS
DRAWING NUMBER: PLANK-B1.4
PART NUMBER: N/A
SCALE: AS SHOWN
DATE: 5/20/15
DRAWN BY: HDAP ENGINEERING