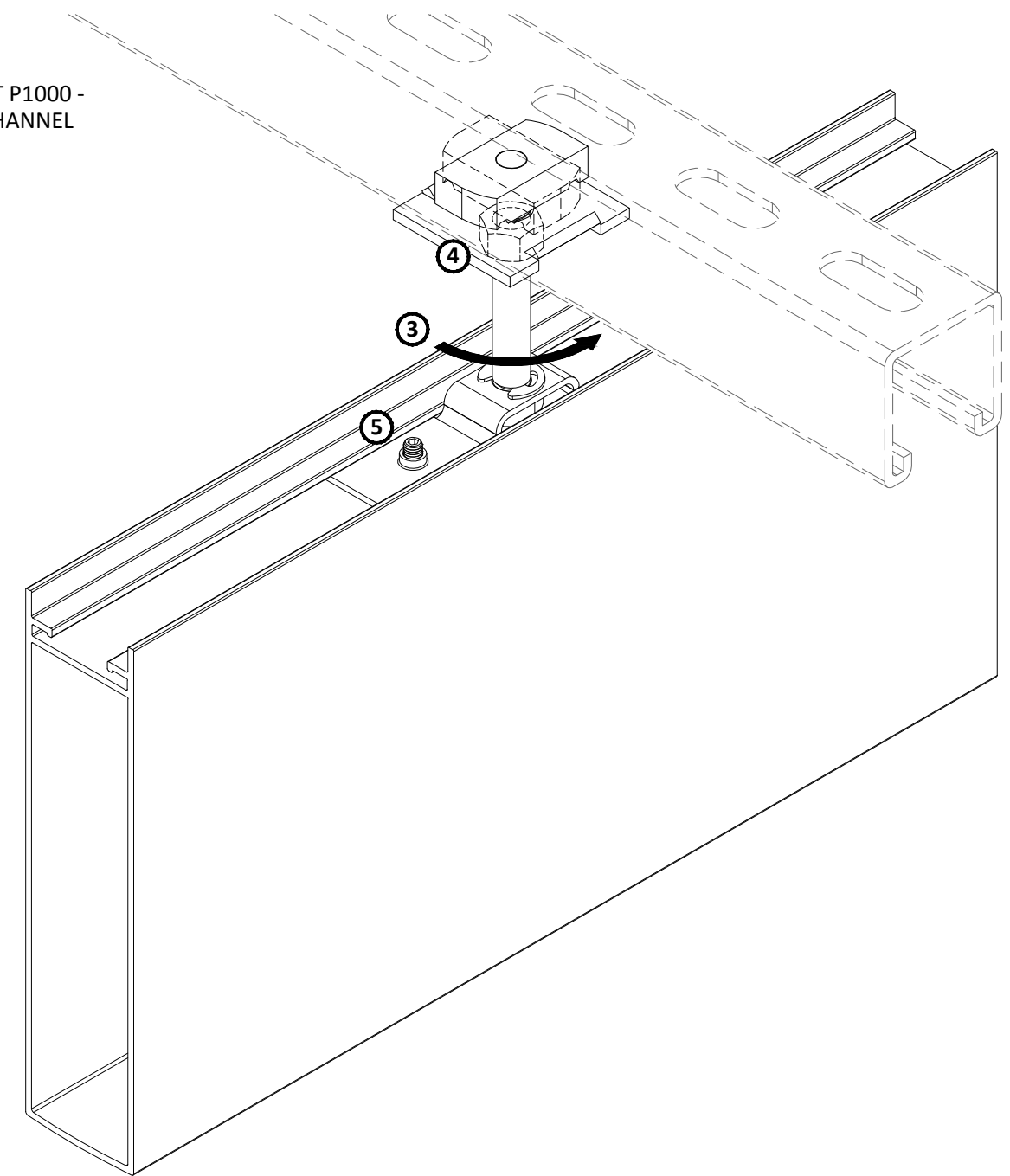
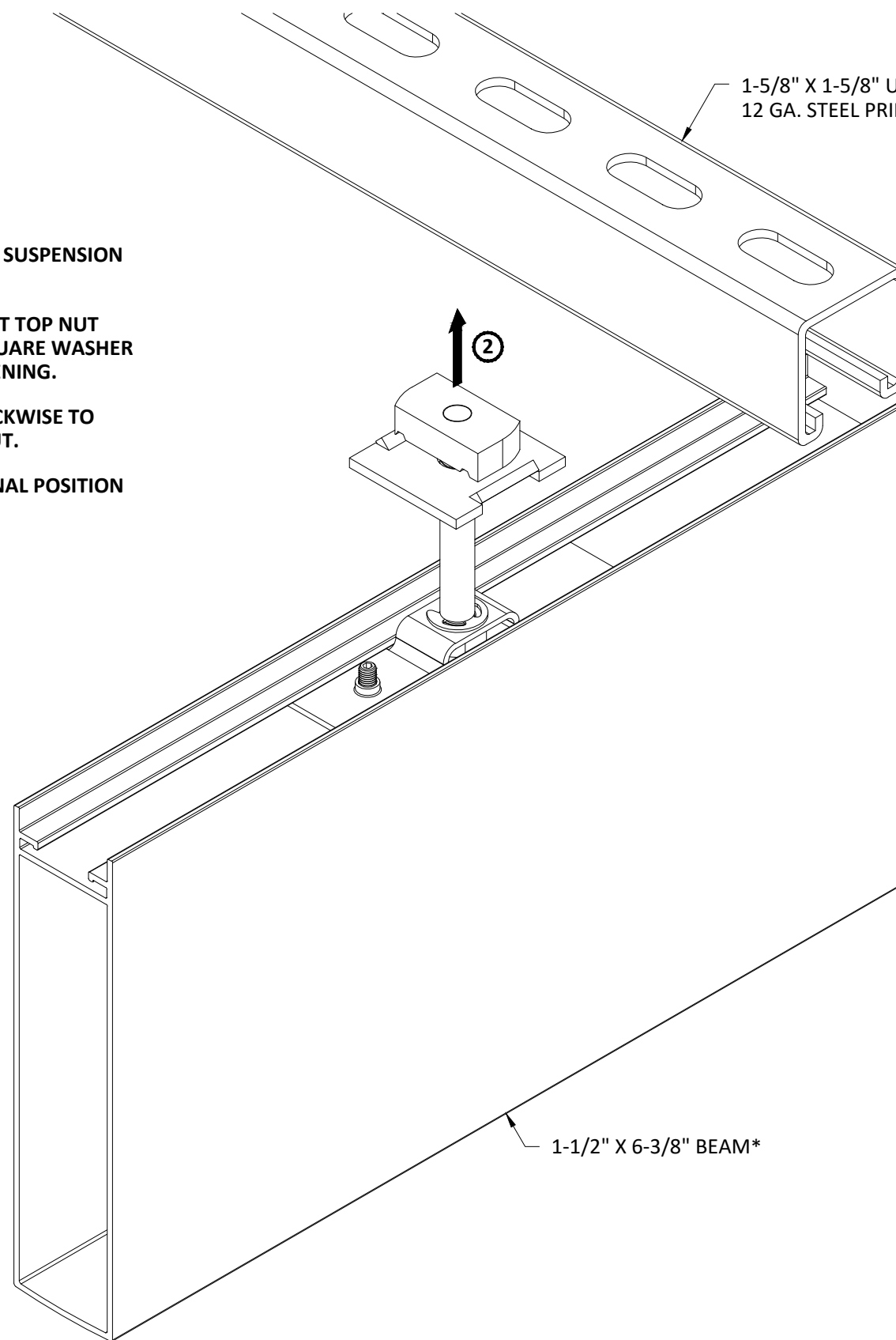
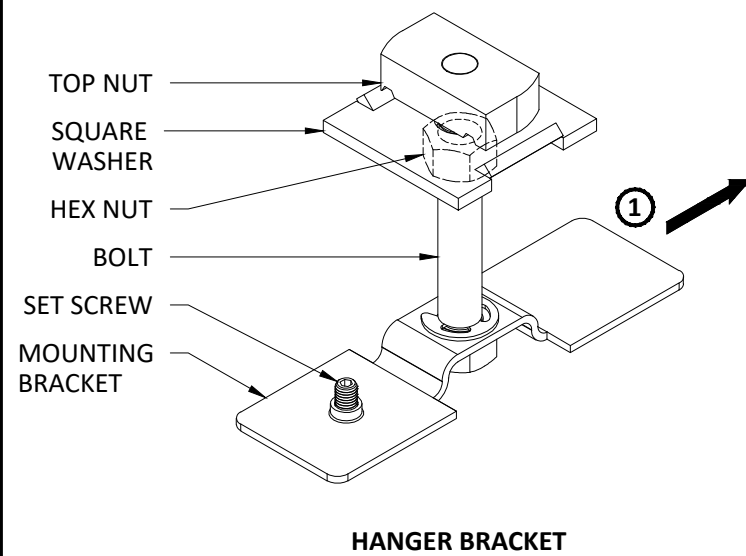


- ① SLIDE MOUNTING BRACKET INTO SUSPENSION SLOT OF BAFFLE.*
- ② LIFT BEAM ASSEMBLY AND INSERT TOP NUT INTO UNISTRUT AND ENSURE SQUARE WASHER TABS ALIGN WITH UNISTRUT OPENING.
- ③ ROTATE BOLT 90° COUNTER-CLOCKWISE TO ENGAGE TOP NUT WITH UNISTRUT.
- ④ SLIDE BAFFLE ASSEMBLY INTO FINAL POSITION AND TIGHTEN HEX NUT.
- ⑤ TIGHTEN SET SCREW.



*1-1/2" X 6-3/8" BEAM PROFILE SHOWN, ALL PROFILES SIMILAR
**VERTICAL SUPPORT OMITTED FOR CLARITY

SPECIFICATIONS
(unless noted otherwise)

MATERIAL: EXTRUDED ALUMINUM ALLOY 6063-T5
FINISH: PAINT | POWDER COAT | DECORATED WOOD FINISH | WOOD VENEER |
WILSONART LAMINATE
PERFORATION: NOT AVAILABLE

HANGER BRACKET INSTALLATION

PROJECT: HIGH PROFILE SERIES PRODUCT SPECIFICATIONS
DRAWING NUMBER: HPS-A1.3
SCALE: NTS
DRAWN BY: HDA ENGINEERING
DATE: 9/8/17