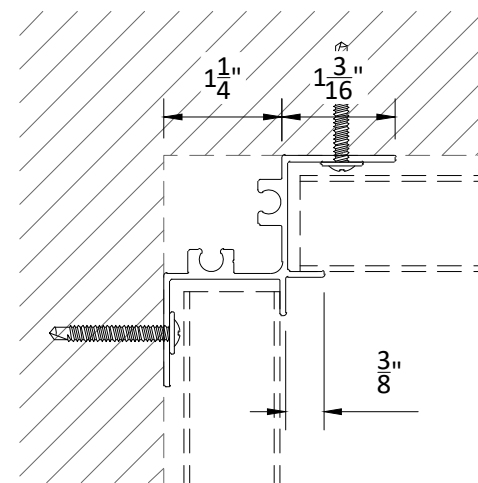
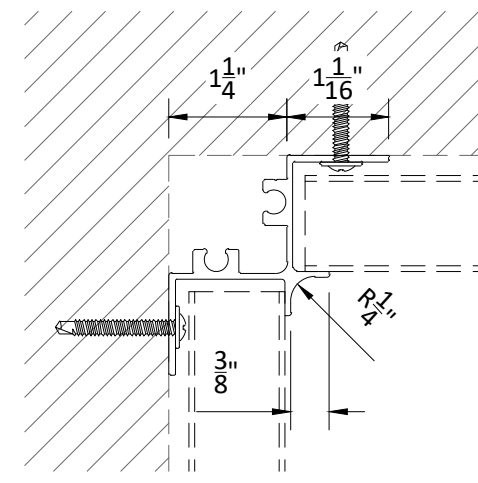


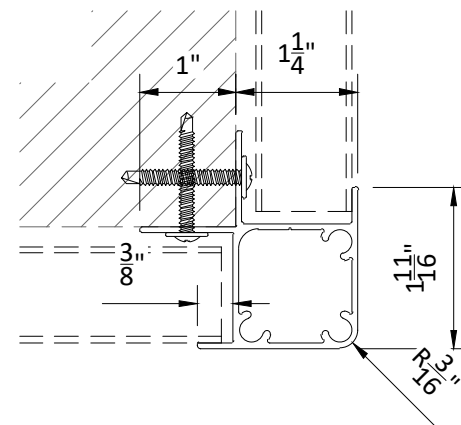
**INTERIOR INSTALLATION**



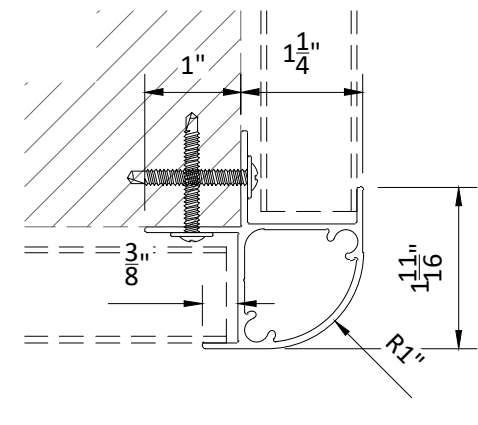
**INSIDE CORNER SQUARE TRIM**



**INSIDE CORNER ROUND TRIM**



**OUTSIDE CORNER SQUARE TRIM**



**OUTSIDE CORNER ROUND TRIM**

.062" EXTRUDED ALUMINUM

TRIMS ARE SYMMETRICAL

PAINTED, POWDER COATED, OR DECORATED WOOD-LOOK  
(POWDER COAT)

SECURE TO WALL WITH #8 X 1-1/4" MIN LATH HEAD OR  
TRUSS HEAD SELF-TAPPING SCREW 16" O.C. MAX, BY OTHERS.  
SEE SEPARATE INSTALLATION PACKAGE FOR DETAILED  
INSTRUCTIONS.

\*24" X 48" PANEL SHOWN, ALL SIZES SIMILAR

**SPECIFICATIONS**  
(unless noted otherwise)

MATERIAL: .040" | .050" | .063" | .090" | .125" ALUMINUM | 24 GA | 20 GA | 16 GA  
STAINLESS STEEL  
FINISH: PAINT | POWDER COAT | DECORATED WOOD FINISH | STAINLESS STEEL  
PERFORATION: SEE DETAIL A1.1

**CORNER CONDITIONS**

PROJECT: METAL WALL PANEL PRODUCT SPECIFICATIONS  
DRAWING NUMBER: WALL-A1.4  
SCALE: 6" = 1'-0"  
DRAWN BY: HDA ENGINEERING  
DATE: 7/16/18